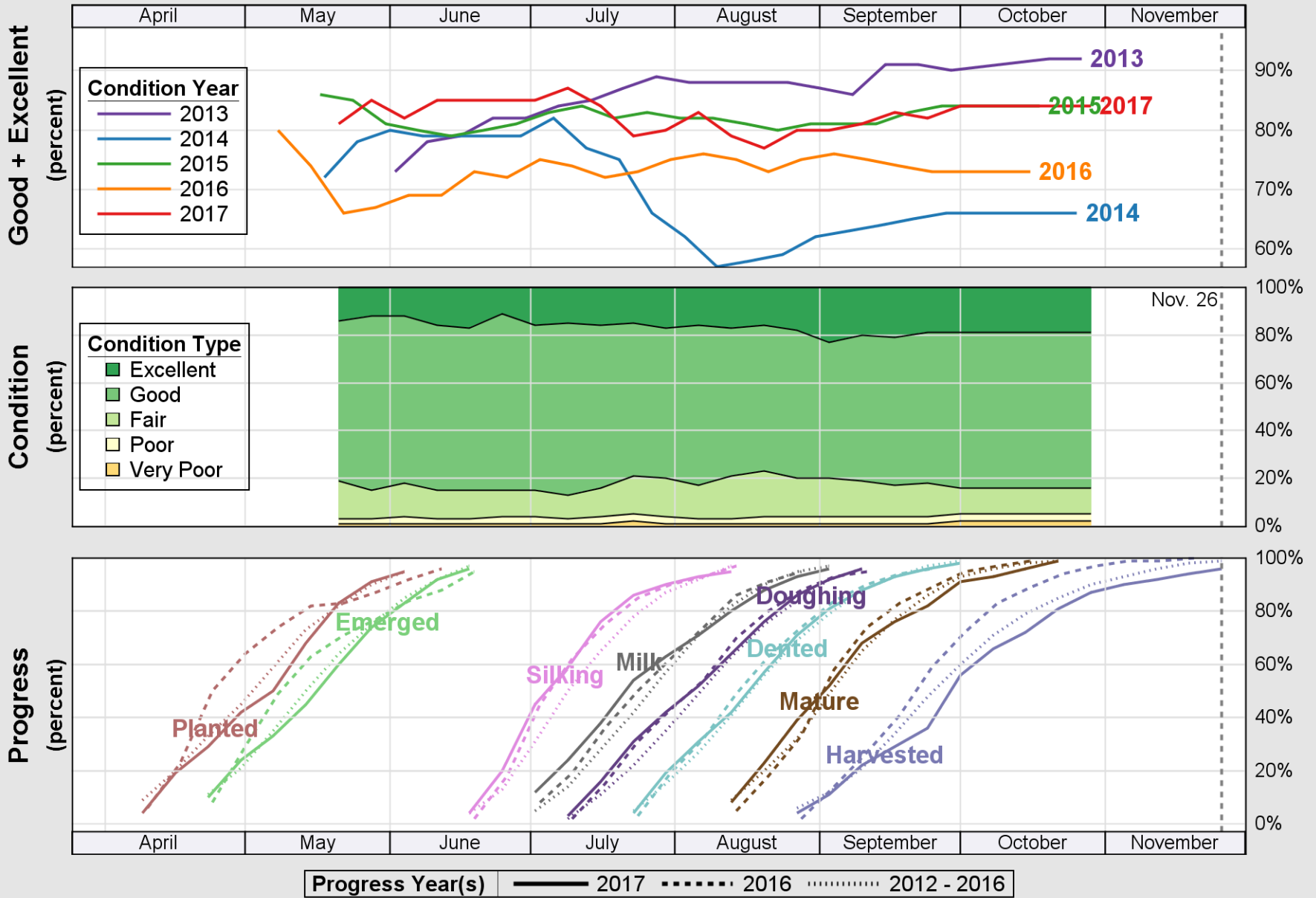


USDA

Crop Progress and Condition: Corn in Kentucky , 2017

NASS

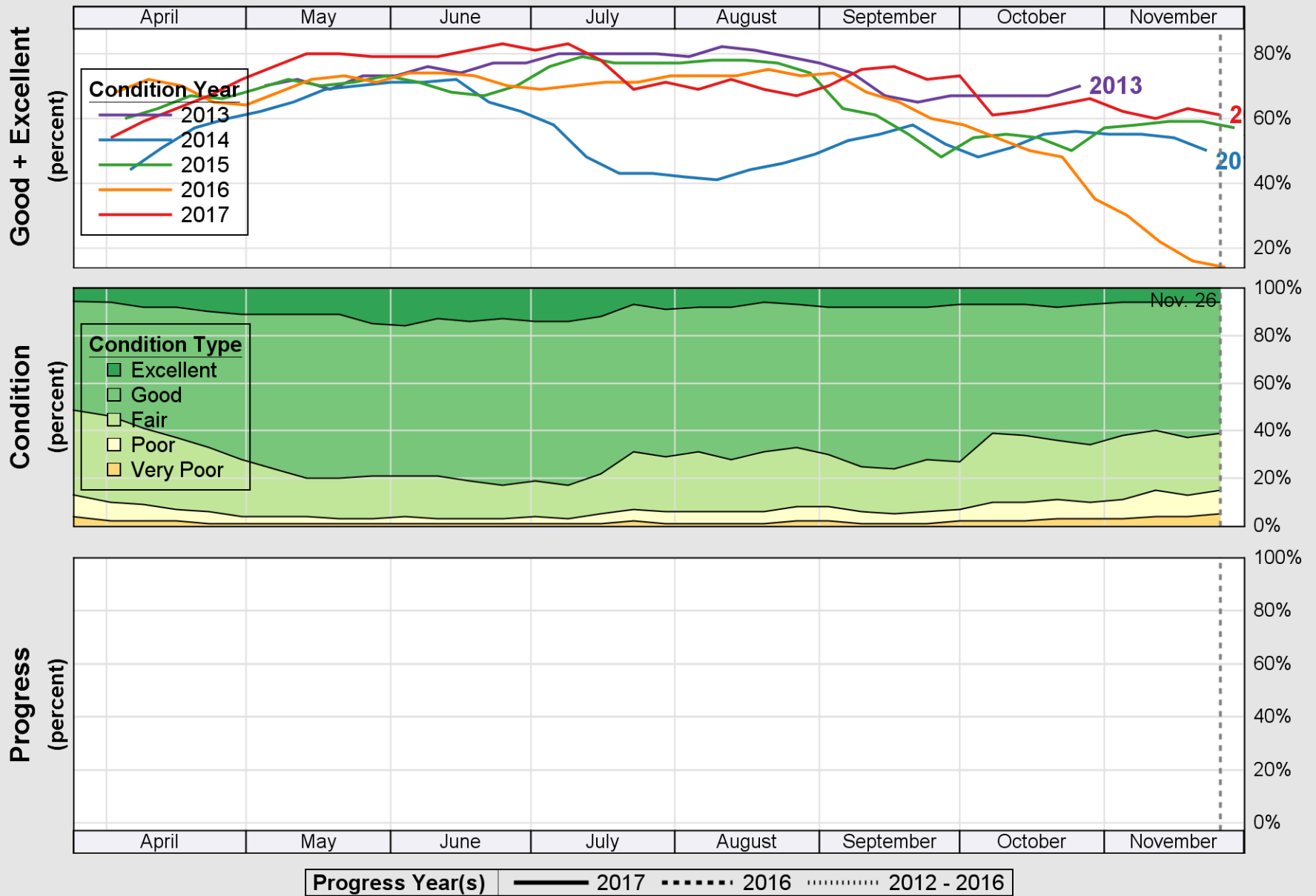


Source: National Agricultural Statistics Service (NASS), Crop Progress Report

USDA

Crop Progress and Condition: Pasture and Range in Kentucky, 2017

NASS

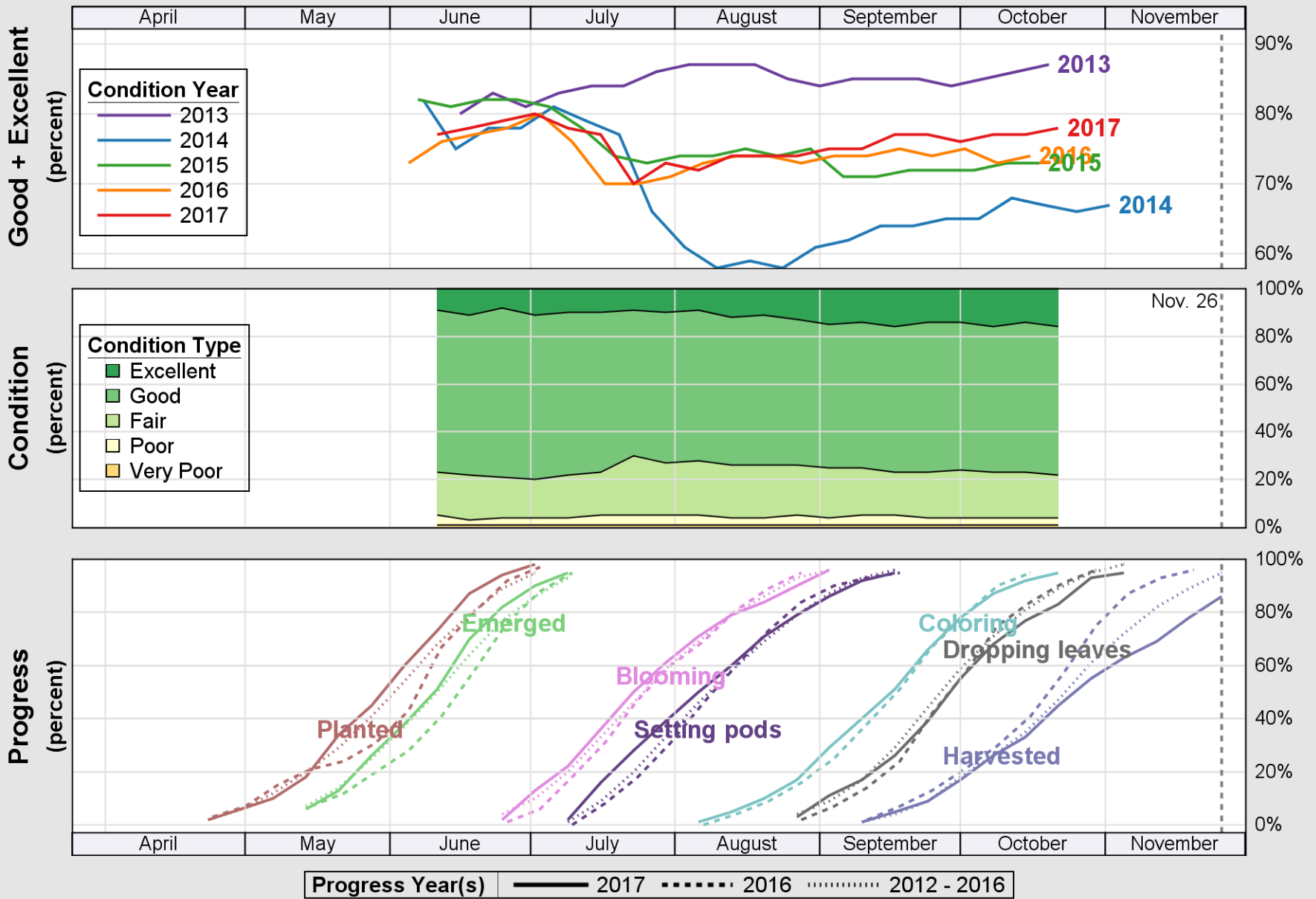


Source: National Agricultural Statistics Service (NASS), Crop Progress Report

USDA

Crop Progress and Condition: Soybeans in Kentucky , 2017

NASS

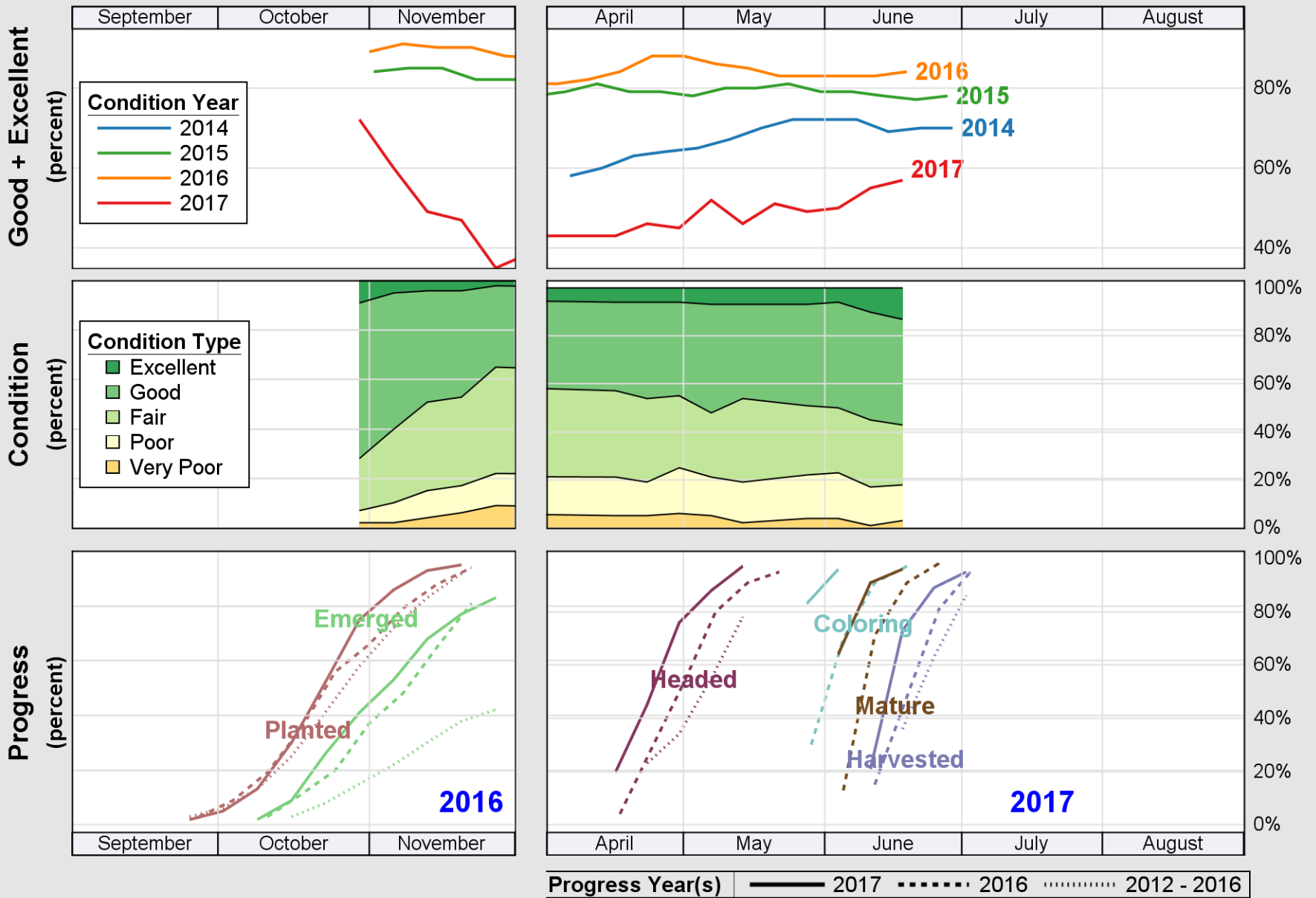


Source: National Agricultural Statistics Service (NASS), Crop Progress Report

USDA

Crop Progress and Condition: Winter Wheat in Kentucky , 2017

NASS



Source: National Agricultural Statistics Service (NASS), Crop Progress Report