



Catfish Feed Deliveries

Released December 22, 2008, by the National Agricultural Statistics Service (NASS), Agricultural Statistics Board, U.S. Department of Agriculture. For information on *Catfish Feed Deliveries* call Charles Butler at 601-965-4575, office hours 8:00 a.m. to 4:30 p.m. CT.

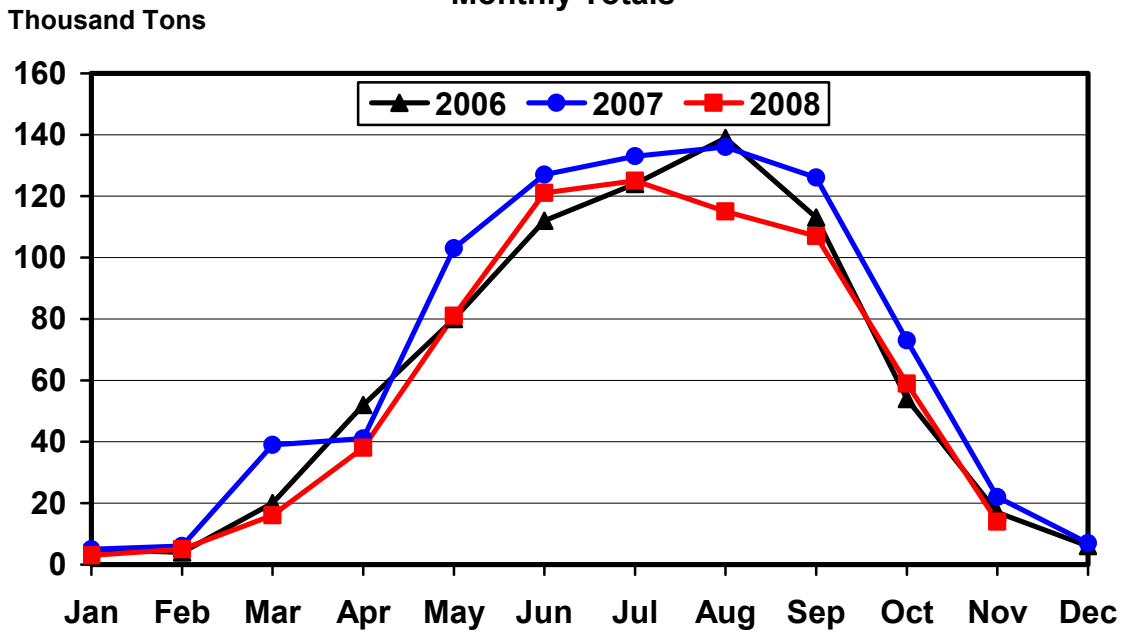
November 2008 Catfish Feed Deliveries Down 34 Percent from Last Year

Total catfish feed delivered in the United States during November 2008 was 14,764 tons, down 34 percent from November 2007 and 75 percent below the previous month. Foodsize catfish feed delivered totaled 14,404 tons, down 34 percent from the corresponding month a year ago. Feed delivered for fingerlings and broodfish totaled 360 tons, down 34 percent from the corresponding month a year ago.

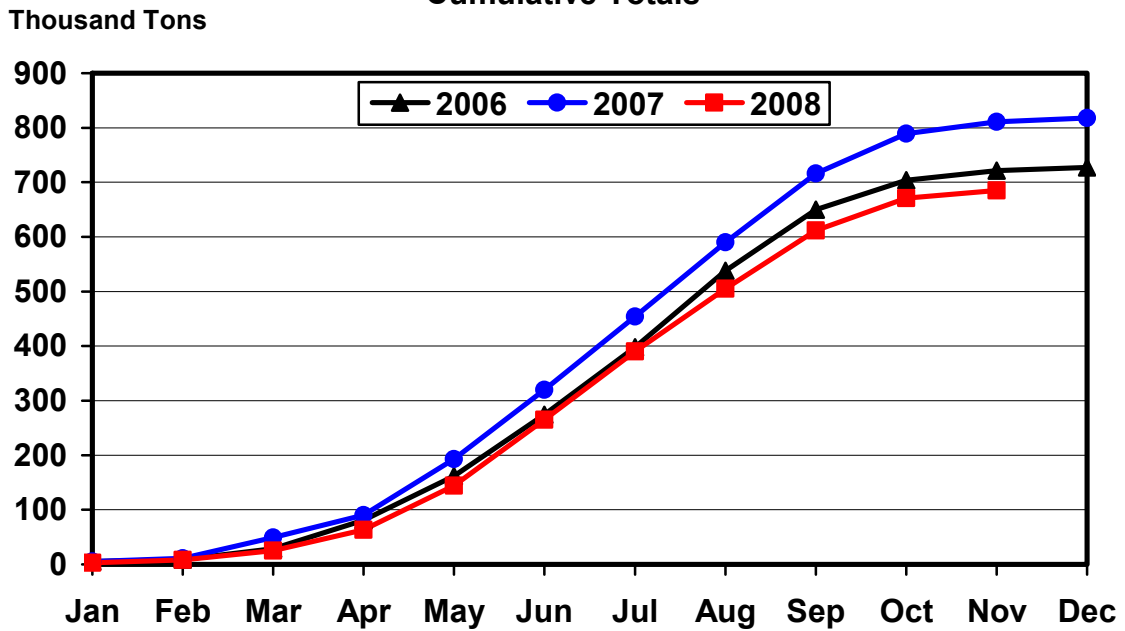
November feed delivered to Alabama catfish growers for foodsize fish totaled 5,314 tons, down 20 percent from last year. Alabama accounted for 37 percent of the total foodsize catfish feed delivered to U.S. farmers.

The other major States with catfish feed deliveries for foodsize fish in November and their comparison to the previous year were Arkansas with 1,721 tons, down 17 percent; Louisiana with 359 tons, down 74 percent; and Mississippi with 4,566 tons, down 48 percent from last year.

U. S. Quantity of Foodsize Catfish Feed Delivered, Monthly Totals



U.S. Quantity of Foodsize Catfish Feed Delivered, Cumulative Totals



**Catfish Feed: Tons Delivered For Foodsize Fish,
United States, 2007-2008**

Month	By Month		Percent of Previous Year	Cumulative		Percent of Previous Year
	2007	2008		2007	2008	
	<i>Tons</i>	<i>Tons</i>	<i>Percent</i>	<i>Tons</i>	<i>Tons</i>	<i>Percent</i>
Jan	4,500	3,316	74	4,500	3,316	74
Feb	6,058	5,182	86	10,558	8,498	80
Mar	38,718	16,491	43	49,276	24,989	51
Apr	40,998	38,143	93	90,274	63,132	70
May	102,859	81,333	79	193,133	144,465	75
Jun	127,246	120,833	95	320,379	265,298	83
Jul	133,478	124,571	93	453,857	389,869	86
Aug	135,806	114,866	85	589,663	504,735	86
Sep	126,105	107,400	85	715,768	612,135	86
Oct ¹	73,196	58,811	80	788,964	670,946	85
Nov	21,830	14,404	66	810,794	685,350	85
Dec	7,209			818,003		

¹ Revised 2008 data only.

**Catfish Feed: Tons Delivered For Fingerlings and Broodfish,
United States, 2007-2008¹**

Month	By Month		Percent of Previous Year	Cumulative		Percent of Previous Year
	2007	2008		2007	2008	
	<i>Tons</i>	<i>Tons</i>	<i>Percent</i>	<i>Tons</i>	<i>Tons</i>	<i>Percent</i>
Jan	280	293	105	280	293	105
Feb	367	238	65	647	531	82
Mar	2,126	482	23	2,773	1,013	37
Apr	1,967	986	50	4,740	1,999	42
May	4,686	1,392	30	9,426	3,391	36
Jun	5,560	1,755	32	14,986	5,146	34
Jul	6,937	3,078	44	21,923	8,224	38
Aug	10,028	2,857	28	31,951	11,081	35
Sep	5,118	1,935	38	37,069	13,016	35
Oct	2,612	749	29	39,681	13,765	35
Nov	544	360	66	40,225	14,125	35
Dec	225			40,450		

¹ The sum of the published States may not equal the total to avoid disclosure of individual operations.

**Catfish Feed: Tons Delivered For Foodsize Fish,
Alabama, 2007-2008**

Month	By Month		Percent of Previous Year	Cumulative		Percent of Previous Year
	2007	2008		2007	2008	
	<i>Tons</i>	<i>Tons</i>	<i>Percent</i>	<i>Tons</i>	<i>Tons</i>	<i>Percent</i>
Jan	2,023	1,617	80	2,023	1,617	80
Feb	1,803	2,103	117	3,826	3,720	97
Mar	9,324	5,224	56	13,150	8,944	68
Apr	8,565	9,435	110	21,715	18,379	85
May	23,384	19,235	82	45,099	37,614	83
Jun	33,829	34,461	102	78,928	72,075	91
Jul	36,960	34,535	93	115,888	106,610	92
Aug	35,532	32,978	93	151,420	139,588	92
Sep	29,747	28,119	95	181,167	167,707	93
Oct	19,288	16,740	87	200,455	184,447	92
Nov	6,628	5,314	80	207,083	189,761	92
Dec	3,103			210,186		

**Catfish Feed: Tons Delivered For Foodsize Fish,
Arkansas, 2007-2008**

Month	By Month		Percent of Previous Year	Cumulative		Percent of Previous Year
	2007	2008		2007	2008	
	<i>Tons</i>	<i>Tons</i>	<i>Percent</i>	<i>Tons</i>	<i>Tons</i>	<i>Percent</i>
Jan	199	160	80	199	160	80
Feb	529	163	31	728	323	44
Mar	6,656	1,302	20	7,384	1,625	22
Apr	8,029	4,770	59	15,413	6,395	41
May	21,303	12,094	57	36,716	18,489	50
Jun	20,950	14,971	71	57,666	33,460	58
Jul	20,636	16,137	78	78,302	49,597	63
Aug	23,786	14,912	63	102,088	64,509	63
Sep	21,371	14,726	69	123,459	79,235	64
Oct	9,525	7,971	84	132,984	87,206	66
Nov	2,076	1,721	83	135,060	88,927	66
Dec	506			135,566		

**Catfish Feed: Tons Delivered For Fingerlings and Broodfish,
Arkansas, 2007-2008**

Month	By Month		Percent of Previous Year	Cumulative		Percent of Previous Year
	2007	2008		2007	2008	
	<i>Tons</i>	<i>Tons</i>	<i>Percent</i>	<i>Tons</i>	<i>Tons</i>	<i>Percent</i>
Jan	108	198	183	108	198	183
Feb	114	126	111	222	324	146
Mar	568	164	29	790	488	62
Apr	355	326	92	1,145	814	71
May	576	494	86	1,721	1,308	76
Jun	663	461	70	2,384	1,769	74
Jul	774	528	68	3,158	2,297	73
Aug	1,427	676	47	4,585	2,973	65
Sep	1,125	589	52	5,710	3,562	62
Oct	677	47	7	6,387	3,609	57
Nov	181	154	85	6,568	3,763	57
Dec	98			6,666		

**Catfish Feed: Tons Delivered For Foodsize Fish,
Louisiana, 2007-2008**

Month	By Month		Percent of Previous Year	Cumulative		Percent of Previous Year
	2007	2008		2007	2008	
	<i>Tons</i>	<i>Tons</i>	<i>Percent</i>	<i>Tons</i>	<i>Tons</i>	<i>Percent</i>
Jan	11	30	273	11	30	273
Feb	410	104	25	421	134	32
Mar	1,932	359	19	2,353	493	21
Apr	1,690	1,532	91	4,043	2,025	50
May	2,972	2,741	92	7,015	4,766	68
Jun	3,544	1,983	56	10,559	6,749	64
Jul	3,658	2,861	78	14,217	9,610	68
Aug	4,447	2,260	51	18,664	11,870	64
Sep	3,912	2,674	68	22,576	14,544	64
Oct ¹	2,890	1,971	68	25,466	16,515	65
Nov	1,382	359	26	26,848	16,874	63
Dec	133			26,981		

¹ Revised 2008 data only.

**Catfish Feed: Tons Delivered For Fingerlings and Broodfish,
Louisiana, 2007-2008**

Month	By Month		Percent of Previous Year	Cumulative		Percent of Previous Year
	2007	2008		2007	2008	
	<i>Tons</i>	<i>Tons</i>	<i>Percent</i>	<i>Tons</i>	<i>Tons</i>	<i>Percent</i>
Jan						
Feb						
Mar						
Apr	3			3		
May				3		
Jun	2			5		
Jul				5		
Aug				5		
Sep				5		
Oct				5		
Nov				5		
Dec				5		

**Catfish Feed: Tons Delivered For Foodsize Fish,
Mississippi, 2007-2008**

Month	By Month		Percent of Previous Year	Cumulative		Percent of Previous Year
	2007	2008		2007	2008	
	<i>Tons</i>	<i>Tons</i>	<i>Percent</i>	<i>Tons</i>	<i>Tons</i>	<i>Percent</i>
Jan	1,045	825	79	1,045	825	79
Feb	2,146	1,462	68	3,191	2,287	72
Mar	16,944	6,590	39	20,135	8,877	44
Apr	19,217	18,222	95	39,352	27,099	69
May	49,837	42,292	85	89,189	69,391	78
Jun	62,580	63,735	102	151,769	133,126	88
Jul	65,230	65,177	100	216,999	198,303	91
Aug	65,099	58,766	90	282,098	257,069	91
Sep	63,635	54,664	86	345,733	311,733	90
Oct	36,018	26,948	75	381,751	338,681	89
Nov	8,855	4,566	52	390,606	343,247	88
Dec	1,645			392,251		

**Catfish Feed: Tons Delivered For Fingerlings and Broodfish,
Mississippi, 2007-2008**

Month	By Month		Percent of Previous Year	Cumulative		Percent of Previous Year
	2007	2008		2007	2008	
	<i>Tons</i>	<i>Tons</i>	<i>Percent</i>	<i>Tons</i>	<i>Tons</i>	<i>Percent</i>
Jan	66	41	62	66	41	62
Feb	207	49	24	273	90	33
Mar	1,369	212	15	1,642	302	18
Apr	1,348	488	36	2,990	790	26
May	3,812	699	18	6,802	1,489	22
Jun	4,646	1,169	25	11,448	2,658	23
Jul	5,764	2,425	42	17,212	5,083	30
Aug	8,111	1,923	24	25,323	7,006	28
Sep	3,422	1,109	32	28,745	8,115	28
Oct	1,737	575	33	30,482	8,690	29
Nov	280	120	43	30,762	8,810	29
Dec	85			30,847		

**Catfish Feed: Tons Delivered For Foodsize Fish,
Other States East of the Mississippi River, 2007-2008**

Month	By Month		Percent of Previous Year	Cumulative		Percent of Previous Year
	2007	2008		2007	2008	
	<i>Tons</i>	<i>Tons</i>	<i>Percent</i>	<i>Tons</i>	<i>Tons</i>	<i>Percent</i>
Jan	568	159	28	568	159	28
Feb	308	262	85	876	421	48
Mar	1,623	771	48	2,499	1,192	48
Apr	1,573	1,361	87	4,072	2,553	63
May	2,212	1,960	89	6,284	4,513	72
Jun	2,575	1,739	68	8,859	6,252	71
Jul	3,548	2,488	70	12,407	8,740	70
Aug	2,670	2,473	93	15,077	11,213	74
Sep	2,867	2,808	98	17,944	14,021	78
Oct	2,223	1,366	61	20,167	15,387	76
Nov	817	601	74	20,984	15,988	76
Dec	567			21,551		

**Catfish Feed: Tons Delivered For Foodsize Fish,
Other States West of the Mississippi River, 2007-2008**

Month	By Month		Percent of Previous Year	Cumulative		Percent of Previous Year
	2007	2008		2007	2008	
	<i>Tons</i>	<i>Tons</i>	<i>Percent</i>	<i>Tons</i>	<i>Tons</i>	<i>Percent</i>
Jan	654	525	80	654	525	80
Feb	862	1,088	126	1,516	1,613	106
Mar	2,239	2,245	100	3,755	3,858	103
Apr	1,924	2,823	147	5,679	6,681	118
May	3,151	3,011	96	8,830	9,692	110
Jun	3,768	3,944	105	12,598	13,636	108
Jul	3,446	3,373	98	16,044	17,009	106
Aug	4,272	3,477	81	20,316	20,486	101
Sep	4,573	4,409	96	24,889	24,895	100
Oct ¹	3,252	3,815	117	28,141	28,710	102
Nov	2,072	1,843	89	30,213	30,553	101
Dec	1,255			31,468		

¹ Revised 2008 data only.

**Catfish Feed: Tons Delivered For Fingerlings and Broodfish,
Other States West of the Mississippi River, 2007-2008**

Month	By Month		Percent of Previous Year	Cumulative		Percent of Previous Year
	2007	2008		2007	2008	
	<i>Tons</i>	<i>Tons</i>	<i>Percent</i>	<i>Tons</i>	<i>Tons</i>	<i>Percent</i>
Jan	43	11	26	43	11	26
Feb	20	6	30	63	17	27
Mar	114	70	61	177	87	49
Apr	110	52	47	287	139	48
May	126	63	50	413	202	49
Jun	122	33	27	535	235	44
Jul	129	60	47	664	295	44
Aug	177	190	107	841	485	58
Sep	301	103	34	1,142	588	51
Oct	85	82	96	1,227	670	55
Nov	30	56	187	1,257	726	58
Dec	13			1,270		

Reliability of Catfish Feed Deliveries Estimates

Survey Procedures: All participating catfish feed mills are feed mills that produce and deliver catfish feed to bonafide catfish producers. Survey data for catfish feed are collected from feed mills by the USDA-NASS Mississippi Field Office, which is responsible for ensuring survey coverage is as complete as possible. Mills are contacted by mail, telephone, fax, or internet. Diligent effort is made to ensure that all operations are accounted for in the estimate.

Estimation Procedures: The "**Catfish Feed Deliveries**" report refers strictly to catfish feed *delivered* to bonafide catfish producers and excludes catfish feed delivered to producers of other species. The totals include both bagged and bulk feed. Prior to summarization, questionnaires are compared to previous reports for comparability. Estimates are made for feed mills whose reports are not available in time to be included in the release. Those mills are identified by an asterisk on page 11 of this release. Estimates are based on the mill's previous reports and current conditions. Published totals are a straight summation of the individual reports and estimated data.

If a mill uses a fiscal accounting system, proration is used to convert reported data to a calendar month basis.

Two unusual features of this report are worthy of note: (1) cooperating feed mills are listed by name, and (2) it is impossible for the public to infer the amount of catfish feed *produced* in each State. Since many mills *deliver* feed to more than one State and to growers of other species, any inferences about overall production per State or per mill are not valid.

Revision Policy: Revisions may be necessary in the following month's publication pending a review of late reports received from mills. Revisions to previous estimates are made to improve month-to-month relationships. Estimates for the previous month are subject to revision in all States and regions monthly totals. In February, all monthly estimates for the previous year are reviewed and subject to revisions. The review is primarily based on data that may have been received after the original estimates were published.

Reliability: Estimates are based on data from cooperating catfish feed mills, and therefore have no sampling variability. However, estimates may be subject to errors such as omissions, duplication, mistakes in reporting, recording, and processing of data. These errors are minimized through strict quality controls in the edit and summarization process and a careful review of all reported data for consistency and reasonableness.

Terms and Definitions Used for Catfish Feed Deliveries Estimates

Broodfish - Fish kept for egg production, including males. Broodfish produce the fertilized eggs that go to hatcheries. The most desirable size is 3 to 10 pounds or 4 to 6 years of age.

Catfish Feed - For the purposes of this report catfish feed is defined as feed *delivered* to bonafide catfish producers. Thus, it is not the absolute total amount of feed produced or even sold by a mill. (Some catfish feed is sold to producers of other species of fish.) The definition includes medicated feed. Catfish feed is designed to float on the surface of the water. Catfish are fed this way from the moment they hatch. Therefore, they learn to go to the surface for feed. The result is a clean nutritious diet for American farm raised catfish.

Catfish Feed for Foodsize Fish - Feed containing pellets larger than 1/8 of an inch.

Catfish Feed for Fingerlings/Broodfish - Feed containing pellets 1/8 of an inch or smaller.

Fingerlings – Fish weighing 2 to 60 pounds per 1,000 fish or 2 to 6 inches in length.

Foodsize Fish - Fish being grown commercially for human consumption. Optimum sizes at harvest depend on the market but are generally no lower than 3/4 pound but near one pound.

Data were compiled in cooperation with the following feed mills:

Alabama Feed Mill LLC	Land O Lakes
Arkat Feeds	Melick Aqua Feed LLC
Cargill Animal Nutrition	Rangen Inc.
Carolina Fish Feeds	Silver Cup
Delta Western	Southfresh Feeds
Fishbelt Feeds Inc.	Star Milling Co.
Flint River Mills Inc.	Topwater Feed Mill

Information Contacts

Listed below are the commodity specialists in the Livestock Branch of the National Agricultural Statistics Service to contact for additional information.

Dan Kerestes, Chief, Livestock Branch (202) 720-3570

Bruce Boess, Head, Poultry and Specialty Commodities Section (202) 720-4447

Charles Butler - Catfish Feed Deliveries (601) 965-4575

David Colwell - Cold Storage (202) 720-8784

Fleming Gibson - Poultry Slaughter, Turkey Hatchery, Turkeys Raised (202) 690-3237

Sharyn Lavender - Broiler Hatchery, Chicken Hatchery, Honey (202) 720-3244

Kim Linonis - Layers, Eggs (202) 690-8632

Toby Paterson - Catfish Processing, Catfish Production, Trout Production,
Census of Aquaculture, Egg Products, Mink (202) 720-0585

ACCESS TO REPORTS!!

For your convenience, there are several ways to obtain NASS reports, data products, and services:

INTERNET ACCESS

All NASS reports are available free of charge on the worldwide Internet. For access, connect to the Internet and go to the NASS Home Page at: www.nass.usda.gov.

E-MAIL SUBSCRIPTION

All NASS reports are available by subscription free of charge direct to your e-mail address. Starting with the NASS Home Page at www.nass.usda.gov, under the right navigation, *Receive reports by Email*, click on **National** or **State**. Follow the instructions on the screen.

PRINTED REPORTS OR DATA PRODUCTS

CALL OUR TOLL-FREE ORDER DESK: 800-999-6779 (U.S. and Canada)
Other areas, please call 703-605-6220 FAX: 703-605-6900
(Visa, MasterCard, check, or money order acceptable for payment.)

ASSISTANCE

For **assistance** with general agricultural statistics or further information about NASS or its products or services, contact the **Agricultural Statistics Hotline** at **800-727-9540**, 7:30 a.m. to 4:00 p.m. ET, or e-mail: nass@nass.usda.gov.

The U.S. Department of Agriculture (USDA) prohibits discrimination in all its programs and activities on the basis of race, color, national origin, age, disability, and where applicable, sex, marital status, familial status, parental status, religion, sexual orientation, genetic information, political beliefs, reprisal, or because all or part of an individual's income is derived from any public assistance program. (Not all prohibited bases apply to all programs.) Persons with disabilities who require alternative means for communication of program information (Braille, large print, audiotape, etc.) should contact USDA's TARGET Center at (202) 720-2600 (voice and TDD).

To file a complaint of discrimination, write to USDA, Director, Office of Civil Rights, 1400 Independence Avenue, S.W., Washington, D.C. 20250-9410, or call (800) 795-3272 (voice) or (202) 720-6382 (TDD). USDA is an equal opportunity provider and employer.