

Dairy Products Prices

Released January 2, 2009, by the National Agricultural Statistics Service (NASS), Agricultural Statistics Board, U.S. Department of Agriculture. For information on *Dairy Products Prices* call Joe Gaynor at 202-690-2168, office hours 7:00 a.m. to 4:30 p.m. ET.

Dairy Products Prices Highlights

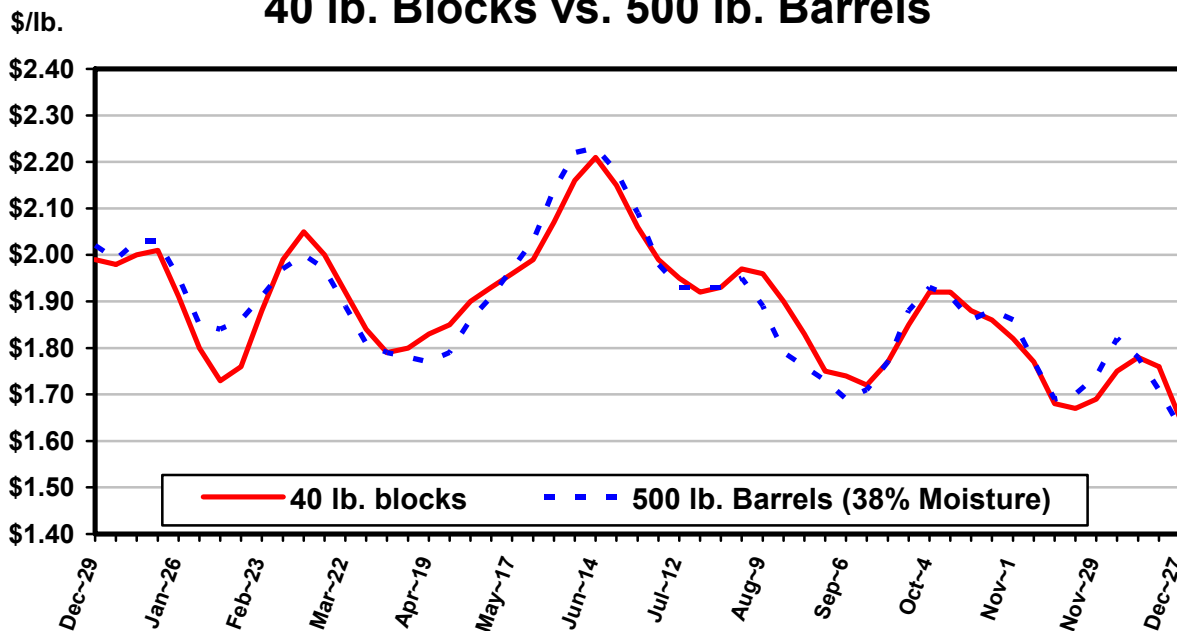
Cheddar Cheese prices received for US 40 pound Blocks averaged \$1.65 per pound for the week ending December 27. The price per pound decreased 10.3 cents from the previous week. The price for US 500 pound Barrels adjusted to 38 percent moisture averaged \$1.63 per pound, down 7.5 cents from the previous week.

Butter prices received for 25 kilogram and 68 pound boxes meeting USDA Grade AA standards averaged \$1.15 per pound for the week ending December 27. The U.S. price per pound decreased 2.4 cents from the previous week.

Nonfat Dry Milk prices received for bag, tote and tanker sales meeting USDA Extra Grade or USPH Grade A standards averaged \$0.83 per pound for the week ending December 27. The U.S. price per pound decreased 0.9 cents from the previous week.

Dry Whey prices received for bag, tote and tanker sales meeting USDA Extra Grade standards averaged 17.3 cents per pound for the week ending December 27. The U.S. price per pound decreased 0.3 cents from the previous week.

Cheddar Cheese Prices, U.S. 40 lb. Blocks vs. 500 lb. Barrels



Cheddar Cheese Prices by Style and Region

Style and Region	Week Ending				
	Dec 27, 2008	Dec 20, 2008	Dec 13, 2008	Dec 6, 2008	Nov 29, 2008
	<i>Dol./Lb.</i>	<i>Dol./Lb.</i>	<i>Dol./Lb.</i>	<i>Dol./Lb.</i>	<i>Dol./Lb.</i>
40 Lb. Blocks					
Avg. Price ¹					
MN/WI	1.6131	1.8243	1.8640	1.8438	1.7926
Oth Sts	1.6554	1.7512	1.7712	1.7381	1.6872
US	1.6523	1.7555	1.7763	1.7469	1.6927
	<i>Pounds</i>	<i>Pounds</i>	<i>Pounds</i>	<i>Pounds</i>	<i>Pounds</i>
Sales Volume ²					
MN/WI	781,042	763,813	669,423	1,013,897	594,252
Oth Sts	9,943,893	12,421,233	11,379,670	11,144,656	10,838,105
US	10,724,935	13,185,046	12,049,093	12,158,553	11,432,357
	<i>Dol./Lb.</i>	<i>Dol./Lb.</i>	<i>Dol./Lb.</i>	<i>Dol./Lb.</i>	<i>Dol./Lb.</i>
500 Lb. Barrels					
Avg. Price ¹					
MN/WI	1.6598	1.7870	1.8726	1.8614	1.8208
Oth Sts	1.7343	1.7859	1.8551	1.9206	1.8238
US	1.7052	1.7865	1.8628	1.9020	1.8226
Price Adj. to 38% Moisture					
MN/WI	1.5959	1.7167	1.7990	1.7963	1.7491
Oth Sts	1.6545	1.6956	1.7596	1.8367	1.7326
US	1.6317	1.7063	1.7768	1.8241	1.7393
	<i>Pounds</i>	<i>Pounds</i>	<i>Pounds</i>	<i>Pounds</i>	<i>Pounds</i>
Sales Volume ²					
MN/WI	4,012,306	4,725,489	4,532,454	4,677,791	3,582,029
Oth Sts	6,268,604	4,515,011	5,781,184	10,254,683	5,146,095
US	10,280,910	9,240,500	10,313,638	14,932,474	8,728,124
	<i>Percent</i>	<i>Percent</i>	<i>Percent</i>	<i>Percent</i>	<i>Percent</i>
Moisture Content					
MN/WI	35.51	35.46	35.46	35.75	35.46
Oth Sts	35.01	34.70	34.63	35.17	34.74
US	35.21	35.09	35.00	35.35	35.03

¹ Prices weighted by volumes reported.

² Sales as reported by participating manufacturers.

Butter Prices

Region	Week Ending				
	Dec 27, 2008	Dec 20, 2008	Dec 13, 2008	Dec 6, 2008	Nov 29, 2008
	<i>Dol./Lb.</i>	<i>Dol./Lb.</i>	<i>Dol./Lb.</i>	<i>Dol./Lb.</i>	<i>Dol./Lb.</i>
Avg. Price ¹					
US	1.1498	1.1741	1.2346	1.4177	1.5379
	<i>Pounds</i>	<i>Pounds</i>	<i>Pounds</i>	<i>Pounds</i>	<i>Pounds</i>
Sales Volume ²					
US	2,069,911	*3,731,279	2,835,907	2,832,193	2,331,900

* Revised.

¹ Prices weighted by volumes reported.

² Sales as reported by participating manufacturers.

Nonfat Dry Milk Prices

Region	Week Ending				
	Dec 27, 2008	Dec 20, 2008	Dec 13, 2008	Dec 6, 2008	Nov 29, 2008
Avg. Price ¹ US	<i>Dol./Lb.</i> 0.8323	<i>Dol./Lb.</i> 0.8415	<i>Dol./Lb.</i> 0.8395	<i>Dol./Lb.</i> *0.8534	<i>Dol./Lb.</i> *0.8729
Sales Volume ² US	<i>Pounds</i> 15,594,786	<i>Pounds</i> 25,358,053	<i>Pounds</i> *27,765,740	<i>Pounds</i> *24,987,940	<i>Pounds</i> *18,277,184

* Revised.

¹ Prices weighted by volumes reported.

² Sales as reported by participating manufacturers.

Dry Whey Prices

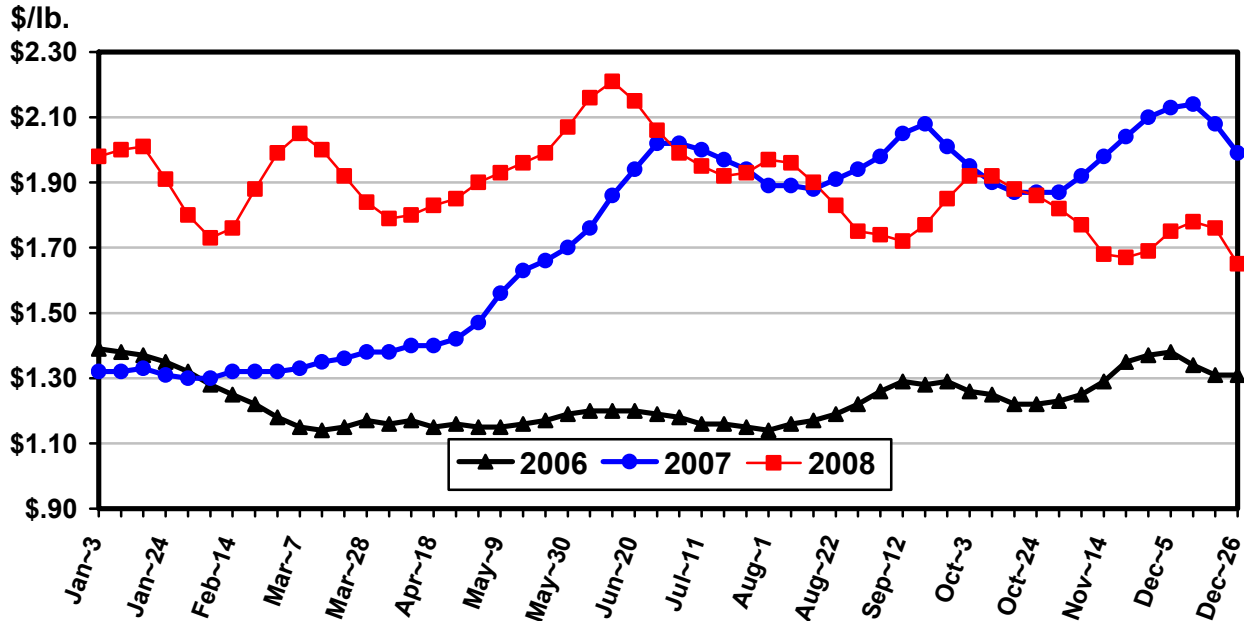
Region	Week Ending				
	Dec 27, 2008	Dec 20, 2008	Dec 13, 2008	Dec 6, 2008	Nov 29, 2008
Avg. Price ¹ US	<i>Dol./Lb.</i> 0.1733	<i>Dol./Lb.</i> *0.1765	<i>Dol./Lb.</i> *0.1706	<i>Dol./Lb.</i> 0.1733	<i>Dol./Lb.</i> 0.1861
Sales Volume ² US	<i>Pounds</i> 5,773,082	<i>Pounds</i> *8,907,648	<i>Pounds</i> *14,780,137	<i>Pounds</i> 11,388,302	<i>Pounds</i> 7,386,881

* Revised.

¹ Prices weighted by volumes reported.

² Sales as reported by participating manufacturers.

Cheddar Cheese Prices, U.S. 40 lb. Blocks



Procedures and Reliability: The Weekly Dairy Product Prices program consists of 92 qualifying manufacturing plants. There are 11 plants in the Atlantic Region, 26 plants in the East North Central Region, 3 plants in the South Central Region, 34 plants in the West Region, and 18 plants in the West North Central Region. Plants that report for multiple commodities are only counted once. Price information included in this report is provided each week by manufacturers of these products. Data are collected by fax and electronic mail each week for the previous week. Price information collected is for the (wholesale) point of sale for:

- 1) Natural, unaged cheddar cheese in 40 pound blocks and 500 pound barrels.
- 2) Boxes of butter meeting USDA Grade AA standards, 80% butterfat, salted, fresh or storage.
- 3) USDA Extra Grade edible nonhygroscopic dry whey.
- 4) USDA Extra Grade and USPH Grade A, nonfortified nonfat dry milk.

A transaction is complete when the product is "shipped out" and title transfers. Resales of purchased product, forward pricing and intra-company sales are excluded.

Revision Policy: Price data for the prior 4 weeks are subject to revision.

The U.S. Department of Agriculture (USDA) prohibits discrimination in all its programs and activities on the basis of race, color, national origin, age, disability, and where applicable, sex, marital status, familial status, parental status, religion, sexual orientation, genetic information, political beliefs, reprisal, or because all or part of an individual's income is derived from any public assistance program. (Not all prohibited bases apply to all programs.) Persons with disabilities who require alternative means for communication of program information (Braille, large print, audiotape, etc.) should contact USDA's TARGET Center at (202) 720-2600 (voice and TDD).

To file a complaint of discrimination, write to USDA, Director, Office of Civil Rights, 1400 Independence Avenue, S.W., Washington, D.C. 20250-9410, or call (800) 795-3272 (voice) or (202) 720-6382 (TDD). USDA is an equal opportunity provider and employer.

ACCESS TO REPORTS!!

For your convenience, there are several ways to obtain NASS reports, data products, and services:

INTERNET ACCESS

All NASS reports are available free of charge on the worldwide Internet. For access, connect to the Internet and go to the NASS Home Page at: www.nass.usda.gov.

E-MAIL SUBSCRIPTION

All NASS reports are available by subscription free of charge direct to your e-mail address. Starting with the NASS Home Page at www.nass.usda.gov, under the right navigation, *Receive reports by Email*, click on **National** or **State**. Follow the instructions on the screen.

PRINTED REPORTS OR DATA PRODUCTS

CALL OUR TOLL-FREE ORDER DESK: 800-999-6779 (U.S. and Canada)
Other areas, please call 703-605-6220 FAX: 703-605-6900
(Visa, MasterCard, check, or money order acceptable for payment.)

ASSISTANCE

For **assistance** with general agricultural statistics or further information about NASS or its products or services, contact the **Agricultural Statistics Hotline** at **800-727-9540**, 7:30 a.m. to 4:00 p.m. ET, or e-mail: nass@nass.usda.gov.