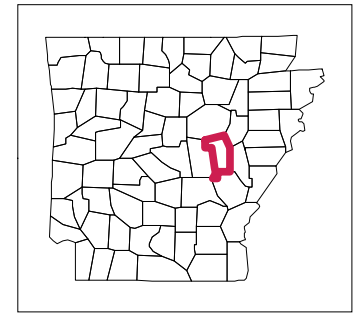
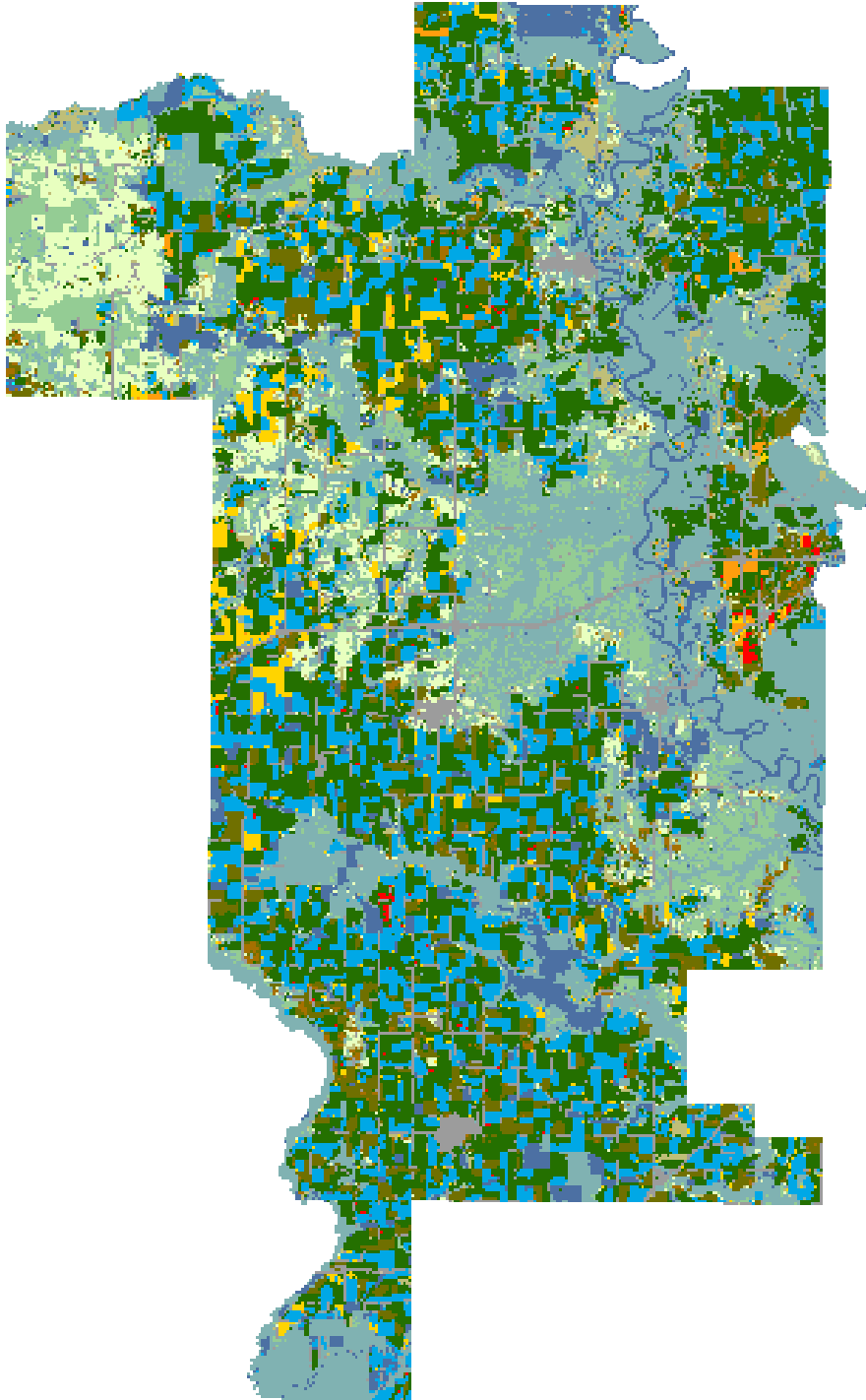




# 2008 Prairie County, Arkansas



## Land Cover Categories

### Agriculture

-  Pasture/Grass
-  Soybeans
-  Rice
-  W. Wht./Soy. Dbl. Crop.
-  Cotton
-  Corn
-  Fallow/Idle Cropland
-  Winter Wheat
-  Sorghum
-  Aquaculture
-  Sweet Potatoes
-  Other Tree Nuts
-  Oats
-  Other Crops
-  Misc. Veggies. & Fruits
-  Alfalfa

### Non-Agriculture

-  Woodland
-  Wetlands
-  Urban/Developed
-  Shrubland
-  Water
-  Barren

