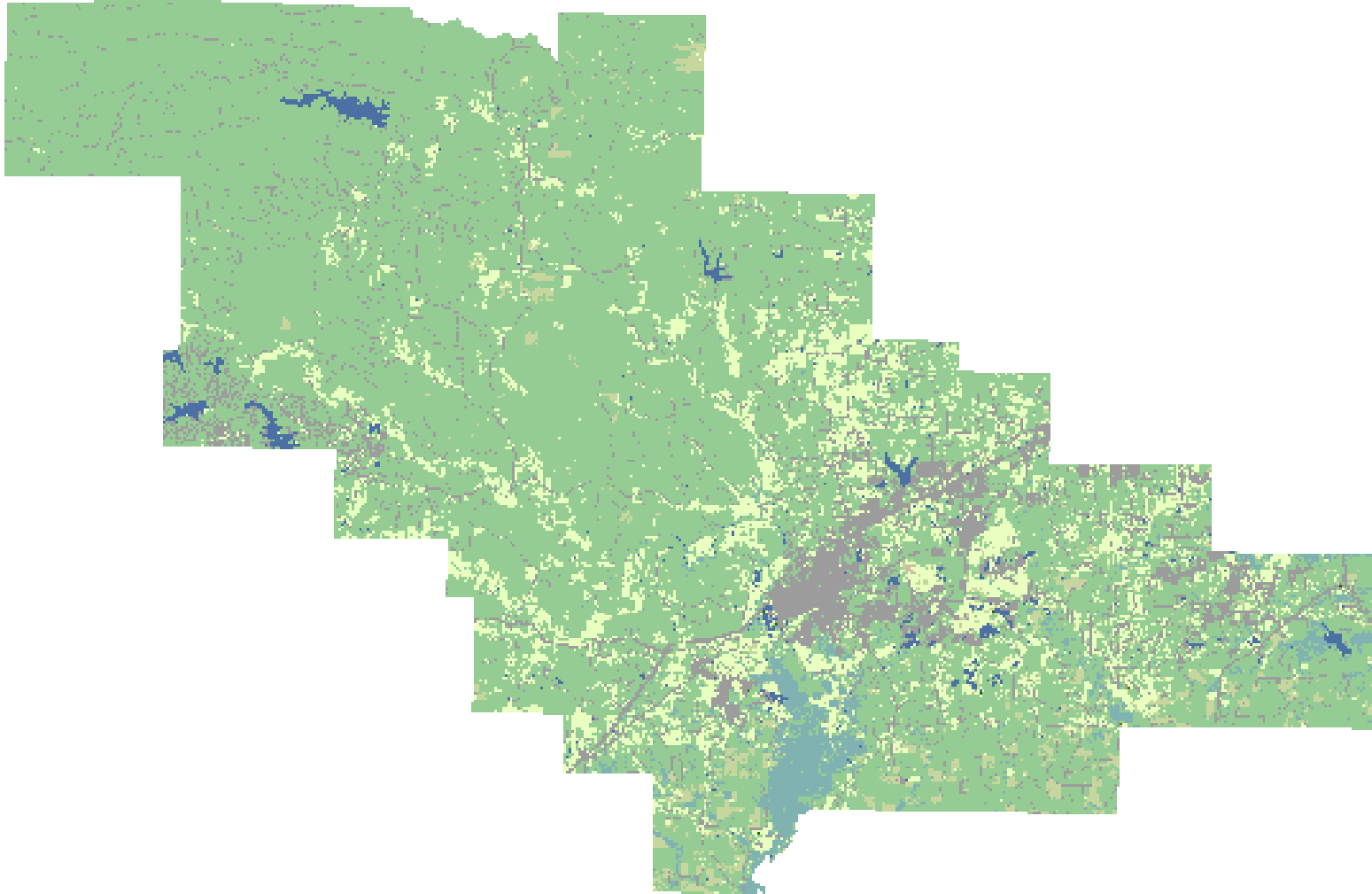
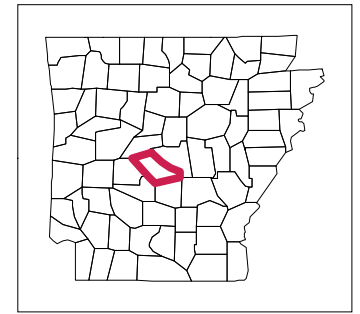


# 2008 Saline County, Arkansas



## Land Cover Categories

### Agriculture

- Pasture/Grass
- Soybeans
- Rice
- W. Wht./Soy. Dbl. Crop.
- Cotton
- Corn
- Fallow/Idle Cropland
- Winter Wheat
- Sorghum
- Aquaculture
- Sweet Potatoes
- Other Tree Nuts
- Oats
- Other Crops
- Misc. Vegs. & Fruits
- Alfalfa

### Non-Agriculture

- Woodland
- Wetlands
- Urban/Developed
- Shrubland
- Water
- Barren

