

CALIFORNIA

**COUNTY AGRICULTURAL
COMMISSIONERS' REPORTS
CROP YEAR 2021-2022**



Released: December 18, 2023
California Department of Food and Agriculture

California Agricultural Statistics Districts

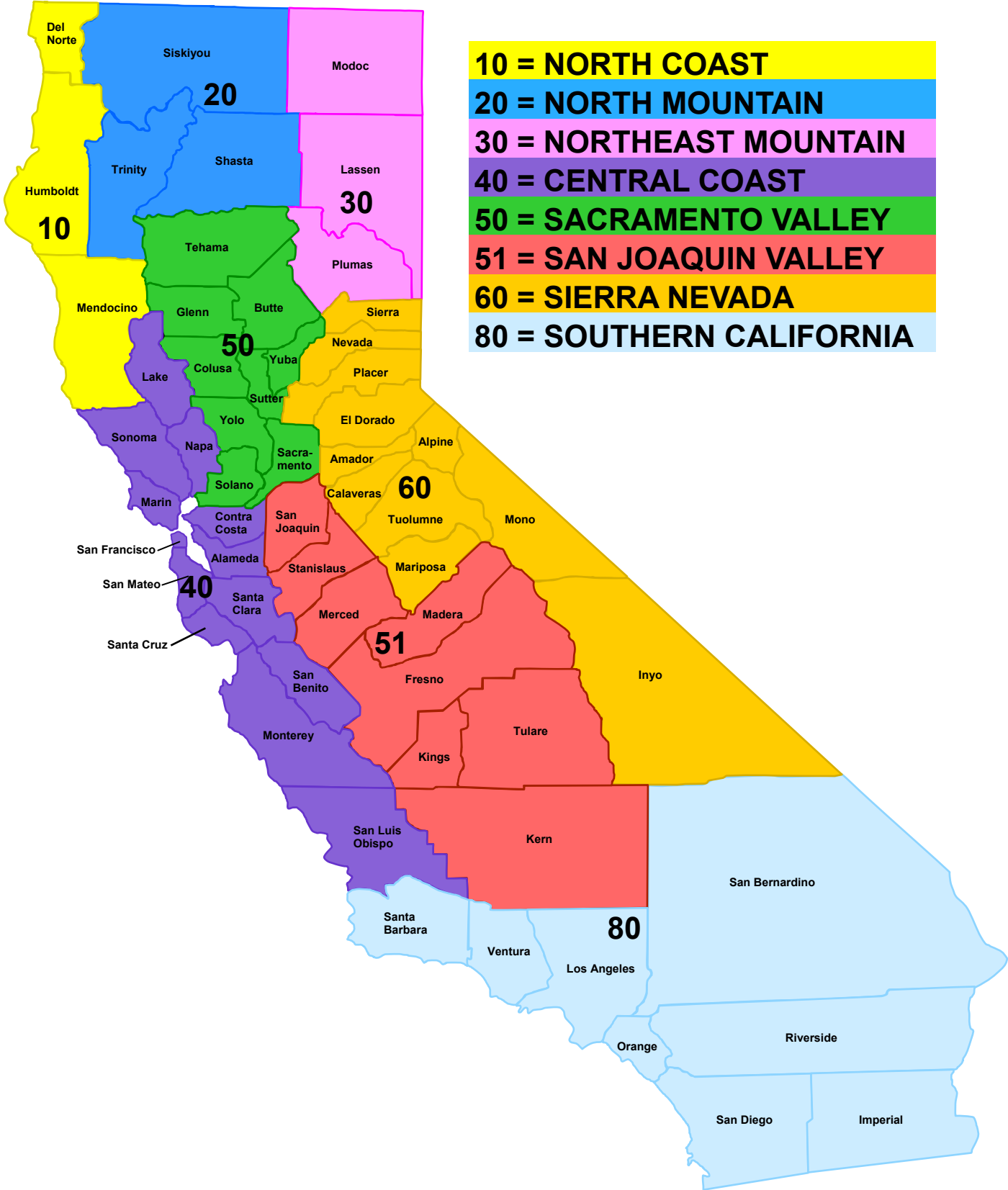


TABLE OF CONTENTS

Introduction	5
Summary of County Agricultural Data.....	6
Gross Value in Agricultural Commissioners' Reports	7
California's Leading Timber Counties, 2022	7
Table 1: County Rank by Gross Value of Agricultural Production, 2021-2022.....	8
Table 2: County Gross Value of Agricultural Production by Commodity Group, 2021-2022.....	9
Table 3: Leading Commodities for Gross Value of Agricultural Production by County, 2022 ..	12
Table 4: Organic Farming by County, 2021-2022	16
Table 5: Total Gross Value of Agricultural Production by Commodity Groups and Leading Counties, 2022.....	17
Table 6: Commodity Rank and Leading Counties by Gross Value of Agricultural Production, 2022	18
Commodity Index.....	19
Commodity Data.....	20-93
County Agricultural Commissioners' Contact Information	94

Prepared by:

California Department of Food and Agriculture
650 Capitol Mall, Suite 6-100, Sacramento, CA 95814
Phone: (916) 738-6600
Fax: (855) 270-2722

December 18, 2023

Cooperating with the USDA, National Agricultural Statistics Service, Pacific Regional Field Office

*Cover photo by USDA staff
All other photos from USDAflickr and istockphoto*



COUNTY AGRICULTURAL COMMISSIONERS' REPORTS

Copies of individual County Agricultural Commissioners' Reports may be requested or obtained directly from each County Agricultural Commissioner's Office.

County reports can also be downloaded at:

cacasa.org/crop-reports/

For your convenience, contact information is included at the end of this report. Many of the counties publish the reports on their websites free-of-charge.

USDA's National Agricultural Statistics Service, Pacific Region publications are available free-of-charge on the Internet at:

nass.usda.gov/ca

Introduction

This publication is based on the annual Crop Reports compiled by the California County Agricultural Commissioners.

Reports were received from 52 of the 58 counties for 2022. County Agricultural Commissioners' Reports for 2022 from Alameda, Contra Costa, Del Norte, Mendocino, Siskiyou, and Trinity counties were not available at the time of publication. Data for Alameda, Contra Costa, Mendocino, and Siskiyou counties were pulled forward from 2021. Since data for Del Norte and Trinity has not been available for the past three years, these counties are not included in this publication.

The methodology and data sources for the county reports varies between counties. Data sources may include voluntary producer surveys, regulatory and inspection data, shipment data, and commodity commission assessments. Copies of individual County Agricultural Commissioners' Reports may be obtained directly from each County Agricultural Commissioner's office or found at: cacasa.org/crop-reports/

The level of detail of the data in the county reports varies between counties. For example: one county may publish acreage and total value of production for all grapes; another county may publish acreage, tonnage produced, and total value of production separately for wine grapes, table grapes, and raisin grapes. In this publication, detailed data is published when it is available in the county's report. Data is also summed into commodity groups, such as "Grapes, All", and commodity categories, such as "Fruit & Nuts". These sums are provided to assist with comparison between counties which publish data with different levels of detail.

In the Commodity Data, the "Sum of Others" includes data from counties who provided the California Department of Food and Agriculture with confidential data. This data does not meet confidentiality requirements to be published at the county level, such as when the data is from a small number of producers. For each commodity, the state total acres and state total value includes this confidential data. The state average yield is calculated based on the weighted average yield of counties which published acreage and production. Similarly, the state average price is calculated based on the weighted average price of counties which published production and value. Confidential data in the "Sum of Others" is excluded from the state average yield and price calculations in this table.

For example, for the provided data:

Example Commodity	Acres	Yield	Production	Price	Value
County A (published)	600	2.0	1,200	\$100.00	\$120,000
County B (published)	200	3.0	600	\$125.00	\$75,000
County C (published)	300				\$85,000
County D (confidential)	50				
County E (confidential)	100	1.5	150	\$100.00	\$15,000

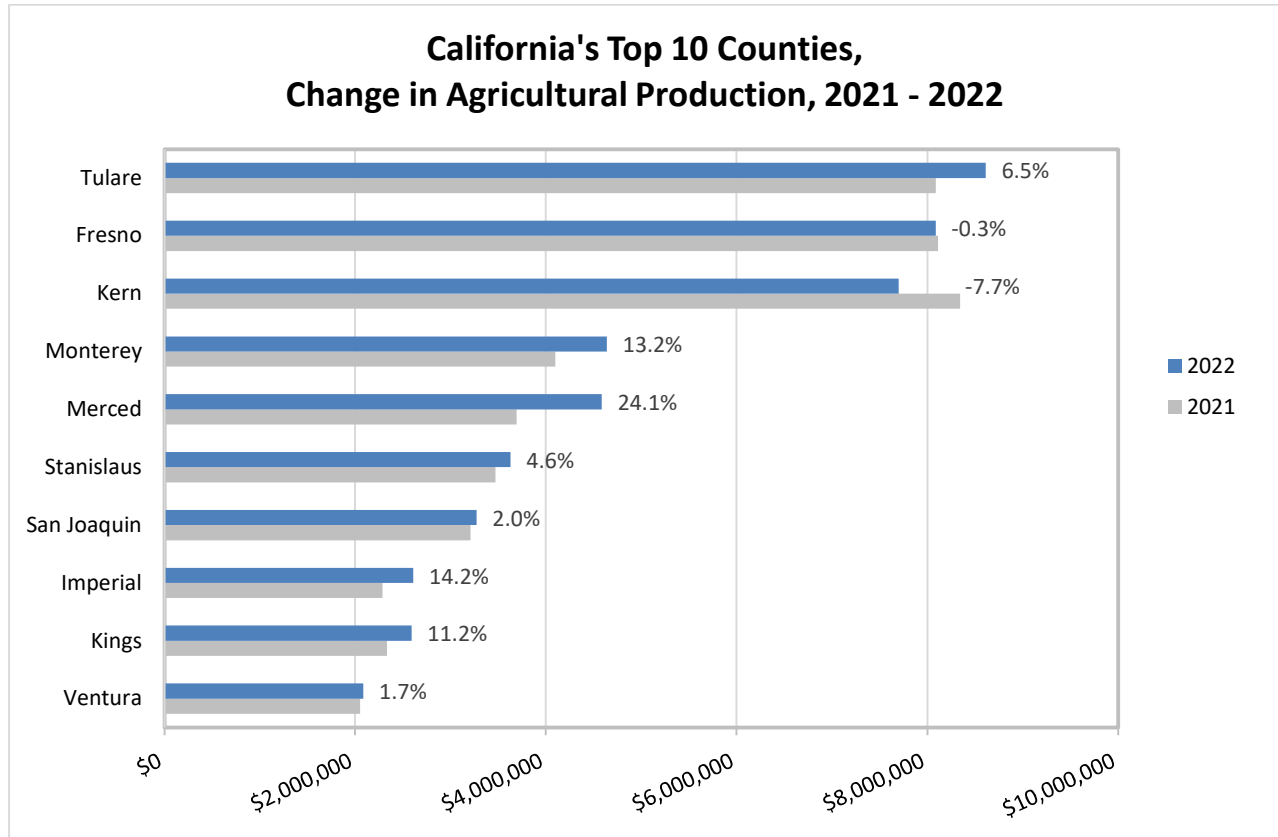
The following information would be published:

Example Commodity	Acres	Yield	Production	Price	Value
County A	600	2.0	1,200	\$100.00	\$120,000
County B	200	3.0	600	\$125.00	\$75,000
County C	300				\$85,000
Sum of Others	150				\$15,000
State Totals	1,250	2.25	2,000	\$108.33	\$295,000

Credit is due to the County Agricultural Commissioners and their staff members for preparing the annual county Crop Reports upon which this compilation is based.

Summary of County Agricultural Data

Overall, California's counties reported an increase of 2.9 percent in the state total value of agricultural production for 2022 compared to 2021. Seven counties reported value of production exceeding \$3.0 billion each. Fifteen counties reported a value of production exceeding \$1.0 billion each. Tulare County is the leading county with an agricultural value of production of \$8.61 billion, an increase of 6.5 percent from 2021. Fresno County was second in value of production with \$8.09 billion, a decrease of 0.3 percent from 2021. Kern County was third in value of production with \$7.70 billion, a decrease of 7.7 percent from 2021. Monterey County was fourth in value of production with \$4.64 billion, an increase of 13.2 percent from 2021.



Top 15 Commodities by Value of Production with Leading Counties, 2022

Rank	Commodity	County Ranked 1st	Percent of State Total Value	County Ranked 2nd	Percent of State Total Value
1	Milk, Cow's, All	Tulare	27.6	Merced	15.5
2	Grapes, All	Kern	20.1	Napa	12.8
3	Almonds, All	Kern	17.8	Stanislaus	14.1
4	Oranges, All	Tulare	60.7	Kern	26.1
5	Horticulture, All	San Diego	30.9	Riverside	8.1
6	Cattle, All	Tulare	19.9	Fresno	12.7
7	Berries, Strawberries, All	Monterey	32.3	Santa Barbara	27.3
8	Pistachios	Fresno	28.8	Kern	27.1
9	Lettuce, All	Monterey	60.3	Imperial	17.7
10	Alfalfa, All	Imperial	18.9	Tulare	9.0
11	Peaches, All	Fresno	51.8	Tulare	17.2
12	Tomatoes, Processing	Fresno	22.1	Yolo	16.5
13	Tangerines & Mandarins	Tulare	29.7	Fresno	22.0
14	Corn, All	Tulare	27.7	Merced	15.9
15	Broccoli	Monterey	60.5	Santa Barbara	10.9

Gross Value in Agricultural Commissioners' Reports

The gross value of production published in this report includes all farm production, whether sold through usual marketing channels or used on the farm where it is produced. This includes the value of pasture and range feed. Fresh fruit and vegetable crop values are based on the Free-On-Board (F.O.B.) packed price. Values are recorded for all products grown during the calendar year, regardless of when they are marketed. Consequently, the values summarized in this report are not comparable to the values estimated by USDA's National Agricultural Statistics Service.

Some counties include timber as a part of their crop report, following the pattern set by the California County Agricultural Commissioners and Sealers Association. Since it is not comparable to earlier county summaries, timber has not been made a part of the main tables of this summary. The total 2022 value of production reported by the counties, including timber, is \$66.4 billion, down 2.9 percent from last year. Humboldt County leads the State with \$99.3 million in timber value. Timber accounts for 41.0% of Humboldt County's total agricultural value.

California's Leading Timber Counties, 2022¹

Timber Rank	County	Timber Volume	Total Agricultural Value	Timber Value	Timber Percentage of Total Agricultural Value Within County
			(Including Timber)		
		<i>Million Bd. Ft.</i>	<i>\$1,000</i>	<i>\$1,000</i>	<i>Percent</i>
1	Humboldt	234,392	272,775	99,267	36.4
2	Mendocino	83,183	167,228	33,807	20.2
3	Siskiyou	144,021	376,178	26,906	7.2
4	Plumas	384,288	51,097	24,003	47.0
5	Shasta	68,416	108,313	14,000	12.9

¹ Timber volume and value data are from the State Board of Equalization, Timber Tax Division.



Table 1: County Rank by Gross Value of Agricultural Production, 2021-2022¹

County	Rank Without Timber					Rank With Timber					
	2021		2022		Percent Change	Timber Value ²	2021		2022		Percent Change
	\$1,000	Rank	\$1,000	Rank			\$1,000	\$1,000	Rank	\$1,000	
Tulare	8,089,377	3	8,612,048	1	6.5	402	8,089,621	3	8,612,450	1	6.5
Fresno	8,112,035	2	8,089,288	2	-0.3	575	8,113,254	2	8,089,863	2	-0.3
Kern	8,342,178	1	7,699,953	3	-7.7		8,342,190	1	7,699,953	3	-7.7
Monterey	4,100,240	4	4,639,893	4	13.2		4,100,240	4	4,639,893	4	13.2
Merced	3,694,249	5	4,585,893	5	24.1		3,694,249	5	4,585,893	5	24.1
Stanislaus	3,471,196	6	3,629,777	6	4.6		3,471,196	6	3,629,777	6	4.6
San Joaquin	3,211,550	7	3,275,614	7	2.0		3,211,550	7	3,275,614	7	2.0
Imperial	2,287,312	9	2,611,103	8	14.2		2,287,312	9	2,611,103	8	14.2
Kings	2,333,403	8	2,594,574	9	11.2		2,333,403	8	2,594,574	9	11.2
Ventura	2,052,020	10	2,087,291	10	1.7		2,052,020	10	2,087,291	10	1.7
Madera	2,045,553	11	1,990,503	11	-2.7	1	2,045,665	11	1,990,504	11	-2.7
Santa Barbara	1,918,186	12	1,930,454	12	0.6		1,918,186	12	1,930,454	12	0.6
San Diego	1,752,999	13	1,776,800	13	1.4		1,752,999	13	1,776,800	13	1.4
Riverside	1,414,439	14	1,490,119	14	5.4		1,414,439	14	1,490,119	14	5.4
San Luis Obispo	1,081,952	15	1,084,332	15	0.2		1,081,952	15	1,084,332	15	0.2
Napa	745,778	20	894,296	16	19.9		745,778	20	894,296	16	19.9
Sonoma	811,447	16	796,025	17	-1.9	7,240	822,708	16	803,265	17	-2.4
Santa Cruz	649,257	21	659,366	18	1.6	7,588	657,370	21	666,954	18	1.5
Butte	553,447	24	652,370	19	17.9	4,483	577,208	23	656,853	19	13.8
Yolo	754,246	19	641,755	20	-14.9		754,246	19	641,755	20	-14.9
Sacramento	574,158	23	602,751	21	5.0		574,158	24	602,751	21	5.0
Sutter	622,121	22	584,236	22	-6.1		622,121	22	584,236	22	-6.1
Glenn	808,734	17	581,964	23	-28.0		808,734	17	581,964	23	-28.0
Colusa	796,465	18	425,459	24	-46.6		796,465	18	425,459	24	-46.6
San Bernardino	347,506	27	408,424	25	17.5		347,506	27	408,424	25	17.5
Solano	407,642	25	390,878	26	-4.1		407,642	25	390,878	26	-4.1
Santa Clara	339,503	29	358,348	27	5.6	516	339,965	30	358,864	28	5.6
San Benito	341,054	28	350,126	28	2.7		341,054	28	350,126	29	2.7
Siskiyou	350,991	26	349,273	29	-0.5	26,906	388,326	26	376,178	27	-3.1
Modoc	236,957	32	293,553	30	23.9	320	240,241	32	293,873	30	22.3
Yuba	278,481	31	245,855	31	-11.7	586	278,519	31	246,441	32	-11.5
Tehama	335,543	30	226,821	32	-32.4	2,151	340,524	29	228,971	33	-32.8
Los Angeles	175,623	33	181,597	33	3.4		175,623	33	181,597	34	3.4
Humboldt			173,508	34		99,267			272,775	31	
Lassen	142,336	34	138,704	35	-2.6	3,570	148,118	35	142,274	36	-3.9
Mendocino	133,421	35	133,421	36	-	33,807	167,228	34	167,228	35	-
Contra Costa	109,440	36	109,440	37	-		109,440	37	109,440	37	-
Lake	83,423	41	107,215	38	28.5	3	83,452	42	107,217	39	28.5
Shasta	82,562	42	94,313	39	14.2	14,000	113,079	36	108,313	38	-4.2
Marin	96,656	38	94,147	40	-2.6		96,656	40	94,147	40	-2.6
San Mateo	93,061	40	88,292	41	-5.1	3,887	97,969	39	92,179	41	-5.9
Placer	100,185	37	88,133	42	-12.0	720	100,818	38	88,852	42	-11.9
Orange	94,773	39	83,232	43	-12.2		94,773	41	83,232	43	-12.2
Alameda	55,239	44	55,239	44	-		55,239	44	55,239	44	-
Mono	34,789	46	41,770	45	20.1		34,789	48	41,770	47	20.1
El Dorado	75,788	43	40,808	46	-46.2	7,974	80,585	43	48,782	46	-39.5
Amador	44,344	45	38,163	47	-13.9	40	45,355	45	38,203	48	-15.8
Tuolumne	32,643	48	28,599	48	-12.4	2,324	37,917	47	30,924	49	-18.4
Mariposa	34,268	47	28,351	49	-17.3		34,268	49	28,351	50	-17.3
Plumas	22,702	49	27,095	50	19.4	24,003	44,394	46	51,097	45	15.1
Inyo	21,230	50	23,120	51	8.9		21,230	50	23,120	51	8.9
Calaveras	15,926	52	20,960	52	31.6	91	18,271	52	21,051	52	15.2
Nevada	20,408	51	18,442	53	-9.6	328	21,222	51	18,770	53	-11.6
Sierra	11,452	53	14,503	54	26.6	1,220	11,731	53	15,724	54	34.0
Alpine	6,213	54	6,661	55	7.2		6,213	54	6,661	55	7.2
State Total	64,346,502		66,194,855		2.9	242,002	64,549,213		66,436,857		2.9

¹ Totals vary slightly from totals published by counties due to classification differences between county and State reports.

² Source: County Agricultural Commissioners' Reports and State Board of Equalization, Timber Tax Division.

Table 2: County Gross Value of Agricultural Production by Commodity Group, 2021-2022

County	Field Crops		Seed Crops		Vegetable Crops	
	2021	2022	2021	2022	2021	2022
<i>\$1,000</i>						
Alameda	8,609	8,609	-	-	318	318
Alpine	4,806	5,254	-	-	-	-
Amador	6,145	6,915	-	-	237	93
Butte	169,094	341,049	20,093	23,214	1,379	1,287
Calaveras	2,135	2,012	-	-	10	50
Colusa	301,116	83,665	29,935	37,007	76,925	94,004
Contra Costa	9,111	9,111	-	-	36,561	36,561
El Dorado	7,349	7,888	-	-	-	-
Fresno	380,667	385,392	24,151	28,406	1,234,180	1,226,594
Glenn	207,727	129,393	29,687	28,833	5,198	3,161
Humboldt	-	2,795	-	-	-	3,679
Imperial	522,502	640,095	101,922	146,142	1,039,092	1,115,591
Inyo	5,902	6,703	-	-	15	-
Kern	329,890	368,358	4,769	8,428	922,159	1,272,312
Kings	428,975	542,752	5,957	12,459	188,547	214,800
Lake	1,799	2,294	-	-	240	287
Lassen	74,621	80,117	-	2,802	-	-
Los Angeles	14,943	15,721	-	-	14,686	17,101
Madera	79,236	105,811	170	311	29,145	31,864
Marin	9,276	8,250	-	-	2,657	3,400
Mariposa	7,650	7,389	-	-	122	154
Mendocino	13,898	13,898	-	-	1,387	1,387
Merced	411,322	555,846	4,168	5,640	557,134	583,595
Modoc	108,108	148,394	36	3	42,727	27,947
Mono	18,717	24,954	-	-	-	-
Monterey	28,093	30,098	4,606	6,665	2,568,381	3,130,724
Napa	293	374	-	-	192	384
Nevada	3,700	3,700	-	-	3,653	3,352
Orange	98	98	-	-	12,716	9,459
Placer	34,149	38,926	-	-	2,007	2,001
Plumas	10,339	12,733	-	-	165	210
Riverside	143,865	159,419	-	-	321,274	322,767
Sacramento	82,232	101,177	2,820	2,962	30,524	30,815
San Benito	25,419	25,062	1,603	4,361	217,524	229,848
San Bernardino	29,139	17,789	-	-	24,687	27,680
San Diego	4,258	3,955	-	-	120,881	129,829
San Joaquin	236,764	390,229	4,029	3,996	260,364	289,455
San Luis Obispo	14,889	20,056	-	-	233,548	293,656
San Mateo	1,877	2,052	-	-	21,167	20,649
Santa Barbara	10,630	12,502	-	-	587,613	660,562
Santa Clara	4,195	4,743	2,324	2,681	198,334	211,774
Santa Cruz	-	-	-	-	95,848	101,165
Shasta	42,689	51,741	-	-	-	-
Sierra	5,409	7,431	-	-	355	451
Siskiyou	88,593	99,146	1,214	711	20,588	42,449
Solano	62,824	77,223	12,354	10,288	86,391	98,770
Sonoma	10,053	30,444	-	-	7,581	2,969
Stanislaus	219,220	272,814	305	334	176,679	216,170
Sutter	193,933	232,478	39,305	39,753	58,441	96,995
Tehama	21,028	22,442	819	1,693	282	363
Tulare	571,436	745,489	4,054	5,334	20,544	26,604
Tuolumne	5,679	3,421	-	-	290	389
Ventura	4,917	3,612	-	-	398,374	460,675
Yolo	116,032	113,604	52,287	47,233	163,489	213,489
Yuba	119,528	133,639	-	-	-	-
State Total ¹	5,214,877	6,119,063	346,608	419,257	9,784,611	11,257,838

Table 2: County Gross Value of Agricultural Production by Commodity Group, 2021-2022

County	Fruit and Nut Crops		Nursery Products ¹		Livestock & Livestock Products ²	
	2021	2022	2021	2022	2021	2022
	<i>\$1,000</i>					
Alameda	28,482	28,482	5,768	5,768	12,062	12,062
Alpine	-	-	-	-	1,408	1,408
Amador	25,410	13,633	208	209	12,345	17,314
Butte	311,256	234,701	17,154	18,012	34,472	34,107
Calaveras	2,721	2,284	113	438	8,157	12,994
Colusa	335,605	160,198	-	-	52,884	50,585
Contra Costa	24,437	24,437	10,472	10,472	28,859	28,859
El Dorado	49,584	13,412	2,439	2,426	14,543	15,276
Fresno	4,795,867	4,522,032	47,941	50,213	1,087,078	1,337,035
Glenn	412,948	235,910	2,374	2,453	150,301	182,144
Humboldt	-	1,067	-	57,610	-	107,949
Imperial	75,573	77,893	15,728	6,233	532,495	625,149
Inyo	386	426	4,346	4,434	10,568	11,540
Kern	5,832,568	4,371,831	122,229	141,298	1,038,289	1,398,468
Kings	732,233	612,020	-	-	916,268	1,176,089
Lake	78,041	101,390	1,136	624	2,184	2,595
Lassen	-	-	34,967	17,153	32,747	38,633
Los Angeles	3,077	3,324	123,010	123,033	19,903	22,415
Madera	1,398,370	1,177,708	23,310	20,330	490,208	626,710
Marin	899	831	274	270	60,949	58,014
Mariposa	227	85	57	74	26,211	20,453
Mendocino	96,472	96,472	1,821	1,821	19,842	19,842
Merced	804,331	937,185	107,514	97,954	1,432,325	1,891,518
Modoc	-	-	240	168	85,845	117,039
Mono	45	48	22	22	15,920	16,732
Monterey	1,285,767	1,234,722	99,778	124,314	113,615	113,370
Napa	742,067	891,349	212	121	3,014	2,067
Nevada	2,798	973	810	689	9,284	9,579
Orange	25,368	29,224	55,282	42,989	1,308	1,461
Placer	33,853	15,679	7,620	9,350	22,241	21,862
Plumas	61	73	28	37	11,940	13,954
Riverside	410,897	407,269	267,497	318,632	200,180	203,871
Sacramento	294,088	269,168	34,878	22,802	103,106	143,300
San Benito	65,207	60,310	6,801	4,252	24,500	26,293
San Bernardino	22,472	22,493	61,520	43,396	199,579	206,519
San Diego	236,849	306,017	1,312,708	1,219,074	25,936	28,305
San Joaquin	1,719,601	1,426,886	138,155	141,197	621,027	822,544
San Luis Obispo	713,904	624,332	76,503	98,041	43,108	48,247
San Mateo	2,648	2,731	60,268	55,103	5,112	4,778
Santa Barbara	1,128,644	1,084,674	154,631	131,021	36,668	39,881
Santa Clara	20,459	18,897	109,372	114,993	4,819	5,260
Santa Cruz	410,349	423,384	136,730	127,962	6,330	746
Shasta	4,547	2,096	3,366	5,269	31,960	35,207
Sierra	3	3	-	-	5,663	6,618
Siskiyou	146	146	195,063	158,208	45,388	48,613
Solano	129,943	75,264	43,086	43,698	72,463	85,124
Sonoma	544,639	551,652	60,370	68,975	188,805	141,985
Stanislaus	1,398,682	981,667	207,780	242,995	1,092,251	1,448,431
Sutter	271,006	163,142	45,782	27,892	13,654	23,976
Tehama	228,340	121,071	17,600	14,748	64,901	64,712
Tulare	4,607,905	4,127,035	118,779	114,650	2,678,080	3,542,734
Tuolumne	312	33	529	102	18,128	16,770
Ventura	1,387,032	1,379,846	248,081	224,989	12,549	16,281
Yolo	359,439	201,577	20,481	23,169	42,518	42,683
Yuba	128,953	83,228	4,663	5,586	25,337	23,402
State Total ¹	31,184,513	27,120,310	4,009,494	3,945,270	11,809,327	15,013,506

Table 2: County Gross Value of Agricultural Production by Commodity Group, 2021-2022

County	Poultry & Poultry Products		Forest Products ³		Total Value	
	2021	2022	2021	2022	2021	2022
	\$1,000					
Alameda	-	-	-	-	55,239	55,239
Alpine	-	-	-	-	6,213	6,661
Amador	-	-	-	-	44,344	38,163
Butte	-	-	-	-	553,447	652,370
Calaveras	2,788	3,182	1	-	15,926	20,960
Colusa	-	-	-	-	796,465	425,459
Contra Costa	-	-	-	-	109,440	109,440
El Dorado	-	-	1,873	1,807	75,788	40,808
Fresno	537,765	539,616	4,386	-	8,112,035	8,089,288
Glenn	485	55	13	15	808,734	581,964
Humboldt	-	407	-	-	-	173,508
Imperial	-	-	-	-	2,287,312	2,611,103
Inyo	12	17	-	-	21,230	23,120
Kern	91,564	138,488	710	770	8,342,178	7,699,953
Kings	61,423	36,454	-	-	2,333,403	2,594,574
Lake	23	24	-	-	83,423	107,215
Lassen	-	-	-	-	142,336	138,704
Los Angeles	-	-	3	2	175,623	181,597
Madera	24,288	26,844	827	924	2,045,553	1,990,503
Marin	22,601	23,382	-	-	96,656	94,147
Mariposa	-	-	1	198	34,268	28,351
Mendocino	-	-	-	-	133,421	133,421
Merced	374,352	509,710	3,104	4,445	3,694,249	4,585,893
Modoc	-	-	2	1	236,957	293,553
Mono	-	-	85	14	34,789	41,770
Monterey	-	-	-	-	4,100,240	4,639,893
Napa	-	-	-	-	745,778	894,296
Nevada	163	149	-	-	20,408	18,442
Orange	2	1	-	-	94,773	83,232
Placer	-	-	315	314	100,185	88,133
Plumas	75	87	95	-	22,702	27,095
Riverside	70,677	78,110	50	50	1,414,439	1,490,119
Sacramento	26,510	32,527	-	-	574,158	602,751
San Benito	-	-	-	-	341,054	350,126
San Bernardino	10,110	90,547	-	-	347,506	408,424
San Diego	51,502	88,745	865	875	1,752,999	1,776,800
San Joaquin	215,885	184,507	15,725	16,800	3,211,550	3,275,614
San Luis Obispo	-	-	-	-	1,081,952	1,084,332
San Mateo	1,990	2,979	-	-	93,061	88,292
Santa Barbara	-	1,814	-	-	1,918,186	1,930,454
Santa Clara	-	-	-	-	339,503	358,348
Santa Cruz	-	6,109	-	-	649,257	659,366
Shasta	-	-	-	-	82,562	94,313
Sierra	1	-	20	-	11,452	14,503
Siskiyou	-	-	-	-	350,991	349,273
Solano	581	511	-	-	407,642	390,878
Sonoma	-	-	-	-	811,447	796,025
Stanislaus	373,842	467,366	2,438	-	3,471,196	3,629,777
Sutter	-	-	-	-	622,121	584,236
Tehama	2,573	1,791	-	-	335,543	226,821
Tulare	87,150	47,209	1,429	2,993	8,089,377	8,612,048
Tuolumne	-	-	7,704	7,884	32,643	28,599
Ventura	1,067	1,888	-	-	2,052,020	2,087,291
Yolo	-	-	-	-	754,246	641,755
Yuba	-	-	-	-	278,481	245,855
State Total ¹	1,957,428	2,282,521	39,645	37,092	64,346,502	66,194,855

¹ Value may not match other tables in this publication due to rounding.

² Livestock & Livestock Products includes Apiary.

³ Forest products and all firewood. Excludes timber.

Table 3: Leading Commodities for Gross Value of Agricultural Production by County, 2022
\$1,000

Alameda		Alpine		Amador	
1 Grapes, All	22,137	1 Pasture, All	4,947	1 Cattle, All	15,610
2 Cattle, All	11,454	2 Cattle, All	1,408	2 Grapes, All	13,193
3 Fruits & Nuts, Misc	6,345	3 Hay, Misc	307	3 Pasture, All	3,418
4 Horticulture, All	5,768			4 Alfalfa, All	1,881
5 Field Crops, Misc	4,654			5 Hay, Grain, Misc	950
6 Pasture, All	3,150			6 Sheep	718
7 Hay, Misc	680			7 Field Crops, Misc	666
8 Livestock, Misc	608			8 Goats	469
9 Vegetables, Misc	318			9 Livestock, Misc	442
10 Alfalfa, All	125			10 Fruits & Nuts, Misc	335
Butte		Calaveras		Colusa	
1 Rice, Excluding Wild	324,003	1 Cattle, All	12,861	1 Almonds, All	86,541
2 Almonds, All	109,861	2 Poultry, Misc	3,182	2 Tomatoes, Processing	71,004
3 Walnuts	64,421	3 Pasture, All	1,883	3 Rice, Excluding Wild	54,211
4 Prunes	34,770	4 Walnuts	1,126	4 Walnuts	40,931
5 Seed for Planting, Rice	21,840	5 Grapes, All	1,070	5 Apiary, All	26,099
6 Apiary, All	19,163	6 Horticulture, All	438	6 Fruits & Nuts, Misc	25,000
7 Horticulture, All	18,012	7 Field Crops, Misc	128	7 Vegetables, Misc	23,000
8 Peaches, All	16,392	8 Forest Products, Timber	91	8 Cattle, All	21,654
9 Cattle, All	11,315	9 Fruits & Nuts, Misc	56	9 Alfalfa, All	13,987
10 Field Crops, Misc	9,861	10 Livestock, Misc	51	10 Seed for Planting, Rice	12,427
Contra Costa		El Dorado		Fresno	
1 Cattle, All	25,806	1 Cattle, All	9,800	1 Peaches, All	697,024
2 Corn, Sweet (Fresh)	18,917	2 Forest Products, Timber	7,974	2 Pistachios	689,130
3 Tomatoes, Misc	14,587	3 Pasture, All	7,818	3 Milk, Cow's, All	655,138
4 Horticulture, All	10,472	4 Apples	5,244	4 Poultry, Misc	539,595
5 Cherries	7,703	5 Livestock, Misc	3,379	5 Cattle, All	486,618
6 Grapes, All	7,556	6 Horticulture, All	2,426	6 Oranges, All	371,818
7 Pasture, All	4,754	7 Peaches, All	2,135	7 Garlic	351,870
8 Vegetables, Misc	3,057	8 Apiary, All	2,096	8 Tomatoes, Processing	246,263
9 Fruits & Nuts, Misc	2,898	9 Christmas Trees, Cut	1,807	9 Tangerines & Mandarins	240,679
10 Peaches, All	2,858	10 Pears, All	1,790	10 Nectarines	214,812
Glenn		Humboldt		Imperial	
1 Almonds, All	116,663	1 Forest Products, Timber	99,267	1 Cattle, All	477,421
2 Milk, Cow's, All	94,512	2 Milk, Cow's, All	61,978	2 Lettuce, All	406,252
3 Rice, Excluding Wild	76,606	3 Horticulture, All	57,610	3 Alfalfa, All	269,735
4 Walnuts	67,226	4 Cattle, All	33,770	4 Livestock, Misc	120,816
5 Cattle, All	40,555	5 Aquaculture, All	11,800	5 Hay, Bermuda Grass	101,542
6 Alfalfa, All	19,772	6 Vegetables, Misc	3,679	6 Broccoli	92,982
7 Pistachios	15,944	7 Field Crops, Misc	2,795	7 Spinach	90,497
8 Olives	15,661	8 Fruits & Nuts, Misc	506	8 Onions, Dry	82,210
9 Prunes	14,417	9 Grapes, All	408	9 Seed for Planting, Alfalfa	78,853
10 Seed for Planting, Rice	11,252	10 Eggs, Chicken, All	339	10 Carrots	69,004
Inyo		Kern		Kings	
1 Cattle, All	10,287	1 Grapes, All	1,394,510	1 Milk, Cow's, All	993,614
2 Horticulture, All	4,434	2 Oranges, All	1,125,486	2 Pistachios	228,785
3 Alfalfa, All	3,629	3 Almonds, All	952,068	3 Tomatoes, Processing	177,492
4 Pasture, All	2,170	4 Milk, Cow's, All	947,492	4 Cotton, Lint, All	164,166
5 Field Crops, Misc	904	5 Pistachios	649,110	5 Cattle, All	151,274
6 Sheep	875	6 Cattle, All	313,861	6 Almonds, All	132,323
7 Fruits & Nuts, Misc	426	7 Potatoes	192,577	7 Corn, All	123,941
8 Apiary, All	224	8 Horticulture, All	141,298	8 Wheat, All	80,430
9 Livestock, Misc	108	9 Eggs, Chicken, All	138,488	9 Alfalfa, All	67,540
10 Animal Fiber, Wool	46	10 Garlic	131,214	10 Peaches, All	62,768

Table 3: Leading Commodities for Gross Value of Agricultural Production by County, 2022

\$1,000

Lake		Lassen		Madera				
1	Grapes, All	84,756	1	Cattle, All	36,596	1	Milk, Cow's, All	454,727
2	Pears, All	32,573	2	Alfalfa, All	36,374	2	Grapes, All	233,893
3	Cattle, All	1,628	3	Hay, Misc	27,434	3	Pistachios	227,873
4	Pasture, All	1,170	4	Pasture, All	5,966	4	Cattle, All	96,572
5	Livestock, Misc	762	5	Hay, Grain, Misc	5,019	5	Apiary, All	69,758
6	Horticulture, All	624	6	Forest Products, Timber	3,570	6	Tangerines & Mandarins	45,036
7	Vegetables, Misc	287	7	Wheat, All	3,112	7	Oranges, All	26,918
8	Walnuts	240	8	Rice, Wild	1,962	8	Alfalfa, All	26,845
9	Olives	66	9	Sheep	1,844	9	Poultry, Misc	26,842
10	Fruits & Nuts, Misc	41	10	Field Crops, Misc	250	10	Figs	26,408
Marin		Mariposa		Mendocino				
1	Milk, Cow's, All	34,064	1	Cattle, All	20,190	1	Grapes, All	84,485
2	Poultry, Misc	23,382	2	Pasture, All	7,375	2	Forest Products, Timber	33,807
3	Cattle, All	15,028	3	Forest Products, Misc	198	3	Pears, All	21,477
4	Pasture, All	7,392	4	Livestock, Misc	187	4	Cattle, All	17,498
5	Aquaculture, All	5,975	5	Vegetables, Misc	154	5	Pasture, All	11,748
6	Vegetables, Misc	3,400	6	Fruits & Nuts, Misc	85	6	Field Crops, Misc	2,150
7	Sheep	2,916	7	Horticulture, All	74	7	Horticulture, All	1,821
8	Grapes, All	831	8	Apiary, All	54	8	Vegetables, Misc	1,387
9	Silage, Misc	621	9	Livestock Products, Misc	22	9	Livestock Products, Misc	1,368
10	Horticulture, All	270	10	Field Crops, Misc	14	10	Fruits & Nuts, Misc	1,085
Merced		Modoc		Mono				
1	Milk, Cow's, All	1,500,840	1	Cattle, All	114,578	1	Alfalfa, All	20,793
2	Almonds, All	560,120	2	Alfalfa, All	85,176	2	Cattle, All	11,604
3	Chickens, All	325,531	3	Hay, Grain, Misc	36,720	3	Sheep	3,445
4	Cattle, All	292,759	4	Potatoes	18,454	4	Pasture, All	2,992
5	Sweet Potatoes	243,156	5	Pasture, All	11,841	5	Livestock, Misc	1,583
6	Corn, All	169,532	6	Onions, Dry	6,763	6	Field Crops, Misc	1,169
7	Eggs, Chicken, All	145,188	7	Hay, Wild	4,234	7	Animal Fiber, Wool	100
8	Alfalfa, All	117,533	8	Wheat, All	3,975	8	Fruits & Nuts, Misc	48
9	Tomatoes, Processing	116,876	9	Mint	3,188	9	Horticulture, All	22
10	Silage, Misc	99,984	10	Rice, Wild	2,720	10	Forest Products, Misc	14
Monterey		Napa		Nevada				
1	Lettuce, All	1,384,879	1	Grapes, All	890,911	1	Cattle, All	7,722
2	Berries, Strawberries, All	958,774	2	Cattle, All	1,087	2	Pasture, All	3,700
3	Broccoli	519,049	3	Livestock Products, Misc	576	3	Vegetables, Misc	3,352
4	Cauliflower	216,860	4	Sheep	391	4	Livestock, Misc	1,123
5	Celery	180,564	5	Vegetables, Misc	384	5	Horticulture, All	689
6	Grapes, All	173,789	6	Olives	283	6	Grapes, All	598
7	Spinach	166,344	7	Pasture, All	205	7	Apiary, All	520
8	Horticulture, All	124,314	8	Hay, Misc	169	8	Fruits & Nuts, Misc	375
9	Brussels Sprouts	114,855	9	Fruits & Nuts, Misc	154	9	Forest Products, Timber	328
10	Mushrooms	91,789	10	Horticulture, All	121	10	Sheep	213
Orange		Placer		Plumas				
1	Horticulture, All	42,989	1	Rice, Excluding Wild	32,200	1	Forest Products, Timber	24,003
			2	Cattle, All	11,872	2	Cattle, All	13,748
			3	Horticulture, All	9,350	3	Alfalfa, All	6,478
			4	Livestock, Misc	6,096	4	Pasture, All	5,057
			5	Walnuts	5,244	5	Hay, Misc	747
			6	Almonds, All	4,878	6	Hay, Grain, Misc	451
			7	Pasture, All	3,800	7	Vegetables, Misc	210
			8	Tangerines & Mandarins	3,023	8	Sheep	94
			9	Field Crops, Misc	2,926	9	Fruits & Nuts, Misc	73
			10	Vegetables, Misc	2,001	10	Poultry, Misc	59

Table 3: Leading Commodities for Gross Value of Agricultural Production by County, 2022
\$1,000

Riverside			Sacramento			San Benito		
1	Horticulture, All	318,632	1	Grapes, All	188,815	1	Vegetables, Misc	56,509
2	Milk, Cow's, All	177,450	2	Pears, All	112,626	2	Lettuce, All	52,013
3	Alfalfa, All	108,448	3	Milk, Cow's, All	91,344	3	Grapes, All	40,616
4	Grapes, All	99,903	4	Corn, All	37,158	4	Spinach	37,353
5	Dates	84,100	5	Poultry, Misc	32,527	5	Tomatoes, Fresh	30,490
6	Avocados	77,000	6	Aquaculture, All	32,427	6	Broccoli	24,046
7	Eggs, Chicken, All	76,830	7	Horticulture, All	22,802	7	Cattle, All	22,918
8	Peppers, All	73,188	8	Alfalfa, All	22,486	8	Pasture, All	17,438
9	Lemons	68,890	9	Vegetables, Misc	20,303	9	Peppers, All	17,084
10	Lettuce, All	36,042	10	Cattle, All	16,747	10	Fruits & Nuts, Misc	12,426
San Bernardino			San Diego			San Joaquin		
1	Milk, Cow's, All	125,994	1	Horticulture, All	1,219,074	1	Milk, Cow's, All	626,472
2	Eggs, Chicken, All	88,686	2	Avocados	122,829	2	Almonds, All	453,176
3	Cattle, All	78,203	3	Vegetables, Misc	113,080	3	Grapes, All	421,061
4	Horticulture, All	43,396	4	Oranges, All	76,408	4	Cherries	279,998
5	Oranges, All	10,589	5	Lemons	73,922	5	Eggs, Chicken, All	174,580
6	Alfalfa, All	6,347	6	Grapefruit	15,963	6	Walnuts	145,997
7	Avocados	4,205	7	Berries, Misc	14,945	7	Horticulture, All	141,197
8	Lemons	4,097	8	Cattle, All	14,364	8	Cattle, All	128,954
9	Cabbage, Napa	2,461	9	Berries, Strawberries, All	12,812	9	Corn, All	117,856
10	Apiary, All	2,322	10	Fruits & Nuts, Misc	12,590	10	Alfalfa, All	105,052
San Luis Obispo			San Mateo			Santa Barbara		
1	Berries, Strawberries, All	277,883	1	Horticulture, All	55,103	1	Berries, Strawberries, All	810,923
2	Grapes, All	261,937	2	Vegetables, Misc	9,704	2	Lettuce, All	180,432
3	Horticulture, All	98,041	3	Brussels Sprouts	8,250	3	Vegetables, Misc	180,326
4	Vegetables, Misc	85,185	4	Forest Products, Timber	3,887	4	Horticulture, All	131,021
5	Lettuce, All	56,915	5	Cattle, All	2,851	5	Cauliflower	96,657
6	Cattle, All	45,230	6	Grapes, All	1,841	6	Grapes, All	96,343
7	Broccoli	39,867	7	Squash, All	1,258	7	Broccoli	93,375
8	Cauliflower	38,931	8	Livestock Products, Misc	956	8	Celery	67,416
9	Fruits & Nuts, Misc	36,162	9	Beans, All	915	9	Avocados	59,650
10	Avocados	33,597	10	Fruits & Nuts, Misc	890	10	Berries, Blackberries	46,788
Santa Clara			Santa Cruz			Shasta		
1	Horticulture, All	114,993	1	Berries, Strawberries, All	220,013	1	Hay, Misc	31,537
2	Mushrooms	86,654	2	Horticulture, All	127,962	2	Cattle, All	18,948
3	Vegetables, Misc	23,326	3	Berries, Raspberries	101,259	3	Forest Products, Timber	14,000
4	Lettuce, All	20,531	4	Berries, Blackberries	82,963	4	Apiary, All	10,839
5	Peppers, All	20,331	5	Lettuce, All	25,832	5	Pasture, All	7,600
6	Tomatoes, Fresh	16,912	6	Brussels Sprouts	13,376	6	Horticulture, All	5,269
7	Spinach	9,092	7	Apples	12,618	7	Rice, Wild	5,220
8	Cabbage, Head	8,719	8	Forest Products, Timber	7,588	8	Alfalfa, All	5,166
9	Grapes, All	8,112	9	Broccoli	6,882	9	Livestock, Misc	4,999
10	Cherries	7,438	10	Grapes, All	5,986	10	Field Crops, Misc	2,218
Sierra			Siskiyou			Solano		
1	Cattle, All	6,391	1	Horticulture, All	158,208	1	Vegetables, Misc	51,417
2	Alfalfa, All	3,807	2	Alfalfa, All	45,712	2	Tomatoes, Processing	47,353
3	Pasture, All	2,852	3	Cattle, All	43,899	3	Horticulture, All	43,698
4	Forest Products, Timber	1,220	4	Forest Products, Timber	26,906	4	Cattle, All	36,218
5	Vegetables, Misc	451	5	Hay, Misc	20,839	5	Alfalfa, All	30,946
6	Hay, Grain, Misc	402	6	Potatoes	14,385	6	Livestock Products, Misc	28,308
7	Hay, Misc	370	7	Onions, Dry	13,333	7	Grapes, All	26,164
8	Sheep	48	8	Vegetables, Misc	13,250	8	Almonds, All	21,290
9	Animal Fiber, Wool	23	9	Wheat, All	13,169	9	Walnuts	11,304
10	Apiary, All	9	10	Pasture, All	13,156	10	Apiary, All	10,250

Table 3: Leading Commodities for Gross Value of Agricultural Production by County, 2022
\$1,000

Sonoma		Stanislaus		Sutter	
1	Grapes, All	547,709	1	Milk, Cow's, All	1,125,516
2	Horticulture, All	68,975	2	Almonds, All	752,971
3	Milk, Cow's, All	67,366	3	Horticulture, All	242,995
4	Livestock Products, Misc	39,397	4	Cattle, All	192,802
5	Cattle, All	20,880	5	Peaches, All	86,948
6	Hay, Grain, Misc	18,050	6	Tomatoes, Misc	53,478
7	Livestock, Misc	9,023	7	Walnuts	42,729
8	Forest Products, Timber	7,240	8	Grapes, All	40,612
9	Pasture, All	6,974	9	Cherries	39,674
10	Sheep	4,501	10	Oats, All	33,658
1	Rice, Excluding Wild		1	Livestock, Misc	169,994
			2	Tomatoes, Processing	89,621
			3	Prunes	47,518
			4	Walnuts	43,529
			5	Horticulture, All	27,892
			6	Seed for Planting, Sunflower	20,216
			7	Wheat, All	16,177
			8	Seed for Planting, Rice	12,599
			9	Corn, All	10,553
			10	Apiary, All	9,852
Tehama		Tulare		Tuolumne	
1	Walnuts	45,277	1	Milk, Cow's, All	2,671,291
2	Cattle, All	25,058	2	Oranges, All	2,617,534
3	Prunes	22,607	3	Grapes, All	841,137
4	Apiary, All	20,957	4	Cattle, All	763,200
5	Milk, Cow's, All	15,467	5	Pistachios	442,960
6	Horticulture, All	14,748	6	Almonds, All	344,918
7	Pasture, All	14,010	7	Tangerines & Mandarins	324,360
8	Olives	13,679	8	Corn, All	295,093
9	Pistachios	4,725	9	Peaches, All	231,328
10	Forest Products, Timber	2,151	10	Silage, Misc	190,827
1	Livestock, Misc		1	Livestock, Misc	10,626
			2	Forest Products, Misc	7,869
			3	Cattle, All	5,791
			4	Pasture, All	3,313
			5	Forest Products, Timber	2,324
			6	Vegetables, Misc	389
			7	Livestock Products, Misc	263
			8	Hay, Misc	109
			9	Horticulture, All	102
			10	Sheep	40
Ventura		Yolo		Yuba	
1	Berries, Strawberries, All	662,704	1	Tomatoes, Processing	183,612
2	Avocados	245,435	2	Grapes, All	65,042
3	Horticulture, All	224,989	3	Almonds, All	63,696
4	Lemons	206,573	4	Alfalfa, All	39,324
5	Celery	127,301	5	Vegetables, Misc	29,877
6	Berries, Raspberries	111,851	6	Pistachios	27,606
7	Oranges, All	61,572	7	Seed for Planting, Sunflower	27,038
8	Peppers, All	53,116	8	Horticulture, All	23,169
9	Berries, Blackberries	44,902	9	Apiary, All	21,173
10	Berries, Blueberries	44,087	10	Rice, Excluding Wild	20,763
1	Rice, Excluding Wild		1	Rice, Excluding Wild	113,948
			2	Prunes	28,202
			3	Peaches, All	23,328
			4	Livestock, Misc	22,577
			5	Walnuts	21,531
			6	Field Crops, Misc	13,437
			7	Kiwifruit	12,441
			8	Fruits & Nuts, Misc	5,926
			9	Pasture, All	5,689
			10	Horticulture, All	5,586

Table 4: Organic Farming by County, 2021-2022

County	2021			2022		
	Number of Producers ¹	Acres ²	Total Value ³ (Dollars)	Number of Producers ¹	Acres ²	Total Value ³ (Dollars)
Alameda	11	283	---	---	---	---
Alpine & El Dorado	30	---	---	32	---	---
Amador	8	186	---	---	---	---
Butte	72	16,396	33,926,412	75	19,963	37,217,787
Calaveras	7	70	377,926	5	51	70,255
Colusa	28	---	8,800,000	30	---	7,730,000
Contra Costa	17	6,842	---	---	---	---
Imperial	81	45,969	125,274,716	53	105,266	132,269,478
Kern	172	---	---	---	---	---
Kings	40	58,000	53,000,000	44	82,526	40,806,719
Lake	104	2,316	---	116	6,395	---
Lassen	---	---	---	14	91,423	4,723,588
Los Angeles	70	1,433	9,285,920	56	1,597	7,447,063
Madera	69	28,000	104,986,000	69	44,781	101,613,000
Marin	77	51,400	40,000,000	75	51,400	39,367,000
Mariposa	2	1	3,760	2	---	---
Mendocino	---	25,903	---	---	---	---
Merced	63	72,220	286,981,000	63	72,220	177,704,000
Modoc	22	189,321	---	24	60,000	7,300,000
Monterey	323	79,141	775,995,000	188	81,418	1,040,445,000
Napa	163	5,032	---	198	7,522	---
Nevada	47	---	---	23	---	2,187,500
Orange	41	---	---	---	---	---
Placer	42	4,079	---	43	5,664	---
Plumas	6	---	73,396	6	4,151	82,937
Sacramento	135	3,832	4,240,000	27	3,107	4,850,000
San Benito	90	---	75,000,000	---	---	---
San Diego	376	---	---	406	---	---
San Joaquin	49	3,375	10,120,000	45	5,475	---
San Luis Obispo	116	87,371	---	121	87,136	---
San Mateo	25	605	12,283,000	21	487	12,435,000
Santa Barbara	174	12,132	---	182	13,163	---
Santa Clara	45	6,093	---	54	8,873	---
Santa Cruz	204	7,118	110,310,000	155	8,011	118,375,000
Shasta	63	8,443	---	27	7,687	---
Sierra	6	410	246,573	6	410	278,627
Siskiyou	---	2,182	684,700	---	---	---
Solano	34	---	---	41	---	30,400,000
Sonoma	298	78,014	---	358	68,390	---
Stanislaus	40	14,418	69,831,000	35	15,456	81,200,000
Sutter	35	20,136	48,633,494	41	17,043	30,624,665
Tehama	31	151,765	---	26	13,855	---
Tulare	125	17,348	---	152	24,052	---
Tuolumne	---	---	---	---	---	---
Ventura	217	12,440	245,848,000	143	13,393	253,903,000
Yolo	92	19,990	56,877,000	96	18,838	51,793,000
Yuba	29	2,493	---	27	1,730	---
State Total	3,709	1,034,757	2,072,777,897	3,079	941,483	2,182,823,619

¹ Number of producers as published by each county. Different counties capture and summarize this information in different ways. Data sources include a voluntary producer survey, organic certifications held during the crop year, and organic registrations granted/renewed during the crop year.

² Acres may include organic rangeland or pasture.

³ Total value as published by each county. This figure may include value-added products.

Table 5: Total Gross Value of Agricultural Production by Commodity Groups and Leading Counties, 2022

Commodity Group	State Total Value ¹	Five Leading Counties Within Group		
		County	Value ¹	Portion of State Total
	\$1,000		1,000	Percent
All Commodities	66,194,855	Tulare	8,612,048	13.0
		Fresno	8,089,288	12.2
		Kern	7,699,953	11.6
		Monterey	4,639,893	7.0
		Merced	4,585,893	6.9
All Crops	48,898,830	Fresno	6,212,637	12.7
		Kern	6,162,997	12.6
		Tulare	5,022,105	10.3
		Monterey	4,526,523	9.3
		San Joaquin	2,268,563	4.6
Field and Seed ²	6,575,412	Imperial	786,237	12.0
		Tulare	753,816	11.5
		Merced	565,931	8.6
		Kings	555,211	8.4
		Fresno	413,798	6.3
Fruit and Nut	27,120,310	Fresno	4,522,032	16.7
		Kern	4,371,831	16.1
		Tulare	4,127,035	15.2
		San Joaquin	1,426,886	5.3
		Ventura	1,379,846	5.1
Vegetable	11,257,838	Monterey	3,130,724	27.8
		Kern	1,272,312	11.3
		Fresno	1,226,594	10.9
		Imperial	1,115,591	9.9
		Santa Barbara	660,562	5.9
Nursery Products	3,945,270	San Diego	1,219,074	30.9
		Riverside	318,632	8.1
		Stanislaus	242,995	6.2
		Ventura	224,989	5.7
		Siskiyou	158,208	4.0
Livestock, Poultry, and Apiary	17,296,027	Tulare	3,589,943	20.8
		Merced	2,401,228	13.9
		Stanislaus	1,915,797	11.1
		Fresno	1,876,651	10.9
		Kern	1,536,956	8.9
Livestock and Products ³	15,013,506	Tulare	3,542,734	23.6
		Merced	1,891,518	12.6
		Stanislaus	1,448,431	9.6
		Kern	1,398,468	9.3
		Fresno	1,337,035	8.9
Poultry and Products	2,282,521	Fresno	539,616	23.6
		Merced	509,710	22.3
		Stanislaus	467,366	20.5
		San Joaquin	184,507	8.1
		Kern	138,488	6.1

¹ Value may not match other tables in this publication due to rounding.² Includes Forest Products, excluding timber.³ Includes aquaculture and apiary products.

Table 6: Commodity Rank and Leading Counties by Gross Value of Agricultural Production, 2022

Commodity	Rank	State Value	County Ranked 1st	Percent of State Total	County Ranked 2nd	Percent of State Total	County Ranked 3rd	Percent of State Total	County Ranked 4th	Percent of State Total	County Ranked 5th	Percent of State Total
		\$1,000										
Milk, Cow's, All	1	9,674,506	Tulare	27.6	Merced	15.5	Stanislaus	11.6	Kings	10.3	Kern	9.8
Grapes, All	2	6,947,117	Kern	20.1	Napa	12.8	Tulare	12.1	Sonoma	7.9	San Joaquin	6.1
Almonds, All	3	5,338,543	Kern	17.8	Stanislaus	14.1	Merced	10.5	San Joaquin	8.5	Tulare	6.5
Oranges, All	4	4,314,162	Tulare	60.7	Kern	26.1	Fresno	8.6	San Diego	1.8	Ventura	1.4
Horticulture, All	5	3,945,269	San Diego	30.9	Riverside	8.1	Stanislaus	6.2	Ventura	5.7	Siskiyou	4.0
Cattle, All	6	3,837,371	Tulare	19.9	Fresno	12.7	Imperial	12.4	Kern	8.2	Merced	7.6
Berries, Strawberries, All	7	2,971,688	Monterey	32.3	Santa Barbara	27.3	Ventura	22.3	San Luis Obispo	9.4	Santa Cruz	7.4
Pistachios	8	2,395,422	Fresno	28.8	Kern	27.1	Tulare	18.5	Kings	9.6	Madera	9.5
Lettuce, All	9	2,297,811	Monterey	60.3	Imperial	17.7	Santa Barbara	7.9	San Luis Obispo	2.5	San Benito	2.3
Alfalfa, All	10	1,429,641	Imperial	18.9	Tulare	9.0	Merced	8.2	Riverside	7.6	San Joaquin	7.3
Peaches, All	11	1,345,662	Fresno	51.8	Tulare	17.2	Stanislaus	6.5	Kings	4.7	San Joaquin	2.5
Tomatoes, Processing	12	1,112,842	Fresno	22.1	Yolo	16.5	Kings	15.9	Merced	10.5	Sutter	8.1
Tangerines & Mandarins	13	1,093,532	Tulare	29.7	Fresno	22.0	Madera	4.1	Riverside	2.3	Ventura	1.7
Corn, All	14	1,064,885	Tulare	27.7	Merced	15.9	Kings	11.6	San Joaquin	11.1	Fresno	4.4
Broccoli	15	858,019	Monterey	60.5	Santa Barbara	10.9	Imperial	10.8	San Luis Obispo	4.6	Riverside	2.9
Apiary, All	16	851,928	Fresno	17.7	Kern	12.2	Tulare	8.2	Madera	8.2	Merced	7.6
Rice, Excluding Wild	17	847,699	Butte	38.2	Sutter	20.1	Yuba	13.4	Glenn	9.0	Colusa	6.4
Lemons	18	793,452	Ventura	26.0	Tulare	20.8	Kern	15.6	San Diego	9.3	Riverside	8.7
Eggs, Chicken, All	19	783,798	San Joaquin	22.3	Merced	18.5	Kern	17.7	San Bernardino	11.3	Riverside	9.8
Carrots	20	748,792	Imperial	9.2	Monterey	5.5	Riverside	3.5	San Joaquin	0.6	Ventura	0.3
Chickens, All	21	665,527	Merced	48.9	San Diego	0.7	San Joaquin	0.4	San Bernardino	0.3		
Walnuts	22	653,492	San Joaquin	22.3	Tulare	11.8	Glenn	10.3	Butte	9.9	Tehama	6.9
Garlic	23	590,186	Fresno	59.6	Kern	22.2	Monterey	12.2	San Joaquin	3.0	Santa Clara	0.5
Avocados	24	551,721	Ventura	44.5	San Diego	22.3	Riverside	14.0	Santa Barbara	10.8	San Luis Obispo	6.1
Cherries	25	544,668	San Joaquin	51.4	Kern	15.1	Stanislaus	7.3	Fresno	6.4	Tulare	6.0
Celery	26	450,079	Monterey	40.1	Ventura	28.3	Santa Barbara	15.0	San Luis Obispo	3.5	Riverside	2.4
Cotton, Lint, All	27	440,231	Kings	37.3	Fresno	28.7	Merced	14.3	Kern	6.9	Tulare	6.4
Wheat, All	28	433,783	Kings	18.5	Imperial	15.2	Kern	11.0	San Joaquin	4.2	Yolo	3.8
Pasture, All	29	423,364	Tulare	13.8	Kern	8.9	Monterey	5.5	Stanislaus	5.0	Merced	4.4
Cauliflower	30	406,938	Monterey	53.3	Santa Barbara	23.8	San Luis Obispo	9.6	Imperial	9.2	Riverside	2.4
Silage, Misc	31	394,578	Tulare	48.4	Merced	25.3	San Joaquin	21.4	Sonoma	0.6	Marin	0.2
Nectarines	32	394,338	Fresno	54.5	Tulare	39.9	Kings	4.0	Siskiyou	<0.1		
Spinach	33	344,396	Monterey	48.3	Imperial	26.3	San Benito	10.8	Riverside	6.1	Ventura	3.1
Tomatoes, Fresh	34	342,349	Merced	11.6	San Joaquin	10.1	San Benito	8.9	Santa Clara	4.9		
Onions, Dry	35	341,077	Kern	25.4	Imperial	24.1	Fresno	22.7	Monterey	10.1	Siskiyou	3.9
Plums	36	309,643	Fresno	47.3	Tulare	33.9	Kings	17.8	Contra Costa	0.2	El Dorado	<0.1
Potatoes	37	306,753	Kern	62.8	San Joaquin	20.4	Modoc	6.0	Siskiyou	4.7	Riverside	0.8
Berries, Raspberries	38	287,831	Ventura	38.9	Santa Cruz	35.2	Monterey	14.9	Santa Barbara	11.0		
Sweet Potatoes	39	280,924	Merced	86.6	Stanislaus	10.0						
Berries, Blueberries	40	255,534	San Joaquin	25.2	Tulare	22.0	Ventura	17.3	Fresno	14.8	Santa Barbara	9.3
Forest Products, Timber	41	242,001	Humboldt	41.0	Mendocino	14.0	Siskiyou	11.1	Plumas	9.9	Shasta	5.8
Livestock, Misc	42	238,200	Imperial	50.7	Yuba	9.5	Tulare	4.5	Tuolumne	4.5	Santa Barbara	4.1
Peppers, All	43	222,088	Riverside	33.0	Ventura	23.9	Santa Clara	9.2	San Benito	7.7	San Joaquin	1.5
Pears, All	44	214,266	Sacramento	52.6	Fresno	16.6	Lake	15.2	Mendocino	10.0	Tulare	3.2
Prunes	45	197,490	Sutter	24.1	Butte	17.6	Yuba	14.3	Tehama	11.4	Glenn	7.3
Berries, Blackberries	46	191,796	Santa Cruz	43.3	Santa Barbara	24.4	Ventura	23.4	Monterey	7.5	San Bernardino	<0.1
Brussels Sprouts	47	189,149	Monterey	60.7	San Luis Obispo	13.5	Santa Barbara	7.8	Santa Cruz	7.1	Ventura	6.1
Mushrooms	48	178,738	Monterey	51.4	Santa Clara	48.5						
Cabbage, Head	49	164,276	Monterey	29.2	Ventura	24.5	Santa Barbara	13.3	San Luis Obispo	11.2	Imperial	8.9
Hay, Misc	50	160,446	Imperial	29.8	Shasta	19.7	Lassen	17.1	Siskiyou	13.0	San Joaquin	5.2
Hay, Grain, Misc	51	146,014	Modoc	25.1	Merced	24.1	Sonoma	12.4	Kern	11.8	Tulare	4.8
Pomegranates	52	145,180	Tulare	16.8	Fresno	15.5	Riverside	<0.1				
Cilantro	53	126,000	Ventura	27.7	San Luis Obispo	10.4	Monterey	9.6				
Melons, Cantaloupe	54	125,536	Fresno	46.9	Merced	22.5	Imperial	19.1	Riverside	3.0		
Grapefruit	55	115,104	Tulare	36.3	Riverside	22.4	Kern	19.8	San Diego	13.9	Imperial	6.0
Hay, Bermuda Grass	56	109,757	Imperial	92.5	Riverside	7.5						
Dates	57	107,975	Riverside	77.9	Imperial	22.0						
Hay, Sudan	58	99,499	Imperial	63.4	Merced	15.5	Tulare	8.5	Solano	4.4	Riverside	2.8
Sheep	59	97,609	Kern	26.6	Fresno	22.1	Solano	9.3	Merced	4.8	Sonoma	4.6
Turkeys	60	96,298	Merced	39.4	San Joaquin	7.6						
Corn, Sweet (Fresh)	61	95,985	Imperial	25.3	Fresno	25.1	Contra Costa	19.7	Riverside	13.4	Santa Clara	7.3
Melons, Watermelon	62	93,186	San Joaquin	36.7	Kern	24.5	Fresno	15.8	Riverside	3.6	San Bernardino	0.5
Olives	64	89,259	Glenn	17.5	Yolo	16.5	Tehama	15.3	Tulare	15.1	San Joaquin	11.5
Aquaculture, All	65	84,625	Sacramento	38.3	Imperial	21.8	Humboldt	13.9	Marin	7.1	Riverside	6.8
Seed for Planting, Alfalfa	66	82,345	Imperial	95.8	Fresno	4.2	Modoc	<0.1				
Seed for Planting, Misc Vegetable & Cotton, Seed	67	79,506	Imperial	29.3	Fresno	19.2	Glenn	12.0	Colusa	10.9	Kern	10.4
	68	76,079	Kings	37.7	Fresno	26.8	Merced	18.3	Tulare	4.8	Riverside	4.6
Manure	69	74,093	Tulare	32.2	Merced	22.4	Fresno	18.3	Stanislaus	10.5	Kern	8.1
Parsley	70	71,833	Ventura	30.8	Monterey	8.2						

Commodity Index

Commodities Summarized from Agricultural Commissioners' Reports, 2022

Alfalfa	20-21	Kumquats.....	64
Almonds	22-23	Leeks.....	64
Animal Fibers.....	23-24	Lemons	64
Anise/ Fennel	24	Lettuce.....	65-66
Apiary	25-27	Limes.....	66
Apples.....	28	Livestock Products, Misc.....	66
Apricots	28	Livestock, Misc	67
Aquaculture.....	28-29	Manure	67
Artichokes	29	Melons.....	68
Asparagus.....	29	Milk.....	69-70
Avocados.....	29	Mint	70
Barley	29-30	Mushrooms	70
Beans.....	30-31	Nectarines.....	70
Beets.....	31	Oats	71
Berries	31-33	Okra	71
Biomass	33	Olives	72
Bok Choy.....	33	Onions	72
Broccoli.....	34	Oranges	72-73
Brussels Sprouts	34	Parsley	73
Cabbage.....	34	Pasture	74-76
Carrots.....	35	Peaches.....	77
Cattle.....	36-39	Pears.....	78
Cauliflower	40	Peas	78
Celery	40	Pecans.....	78
Chard	40	Peppers.....	79
Cherries	40	Persimmons.....	79
Chickens	40-41	Pistachios.....	80
Christmas Trees.....	41	Plums	80
Cilantro.....	41	Pome Fruits.....	80
Citrus	42	Pomegranates.....	81
Corn.....	42-43	Potatoes.....	81
Cotton	44	Poultry, Misc.....	81
Cucumbers	45	Prunes.....	81
Dates	45	Quince	82
Eggplant.....	45	Radishes.....	82
Eggs	45-46	Rice	82
Field Crops, Misc	46	Ryegrass.....	82
Figs	47	Safflower.....	83
Firewood	47	Seed For Planting.....	83-85
Forest Products	47-48	Sheep.....	85
Fruits & Nuts, Misc	49	Silage	86
Garlic	49	Sorghum	86
Goats	50	Spinach	86
Grapefruit.....	50	Squash	87-88
Grapes	51-55	Stone Fruits.....	88
Green Chop	55	Straw.....	88
Greens	55	Sugar Beets.....	88
Hay	56-58	Sweet Potatoes.....	88
Hemp.....	58	Tangelos.....	88
Herbs & Spices.....	58	Tangerines & Mandarins.....	89
Hogs & Pigs.....	58	Tomatoes.....	89-90
Horseradish	58	Triticale	90
Horticulture.....	59-63	Turkeys	90
Jujubes.....	63	Turnips.....	90
Kale.....	63	Vegetables, Misc.....	91
Kiwifruit	64	Walnuts	92
Kohlrabi.....	64	Wheat	93

Commodity Data, 2022					
County	Harvested Acreage	Yield Per Acre	Production	Price Per	Total Value
				Dollars	
Alfalfa, All ¹					
Alameda	95				125,000
Amador	855				1,881,000
Butte	520				637,000
Colusa	7,440				13,987,000
Contra Costa	1,730				1,549,000
Fresno	24,500				58,830,000
Glenn	8,930				19,772,000
Imperial	148,000				269,735,000
Inyo					3,629,000
Kings	20,800				67,540,000
Lassen	23,100				36,374,000
Madera	7,900				26,845,000
Merced	41,100				117,533,000
Modoc	36,400				85,176,000
Mono					20,793,000
Monterey	694				434,000
Plumas	5,480				6,478,000
Riverside	42,500				108,448,000
Sacramento	12,600				22,486,000
San Bernardino	2,920				6,347,000
San Joaquin	40,200				105,052,000
San Luis Obispo	1,030				2,842,000
Shasta	2,700				5,166,000
Sierra	3,220				3,807,000
Siskiyou	35,000				45,712,000
Solano	16,200				30,946,000
Sutter	3,880				7,075,000
Tehama	1,130				1,552,000
Tulare	28,900				128,289,000
Yolo	20,200				39,324,000
Yuba	147				182,000
Sum of Others	71,600				191,095,000
State Total	609,771				1,429,641,000

¹ Includes Alfalfa, Hay; Alfalfa, Misc; Alfalfa, Silage.



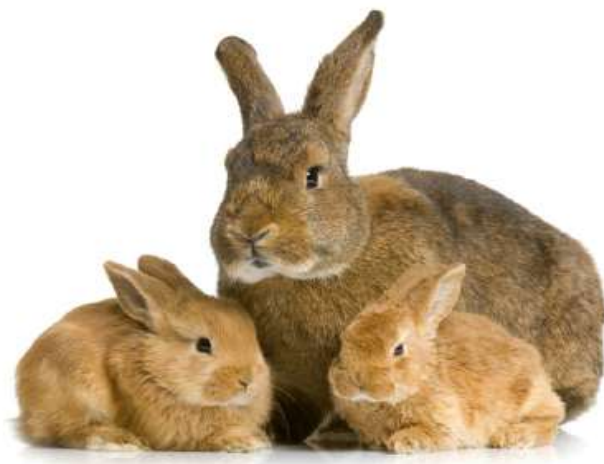
Commodity Data, 2022					
County	Harvested Acreage	Yield Per Acre	Production	Price Per	Total Value
				Dollars	
Alfalfa, Hay		Tons/Acre	Tons		
Alameda	95	6.00	570	219.30	125,000
Amador	855	5.50	4,700	400.21	1,881,000
Butte	520	3.50	1,820	350.00	637,000
Colusa	7,440	5.44	40,500	345.36	13,987,000
Contra Costa	1,730	4.39	7,600	203.82	1,549,000
Fresno	24,500	9.06	222,000	265.00	58,830,000
Glenn	8,930	6.71	59,900	330.08	19,772,000
Imperial	148,000	5.61	830,000	324.98	269,735,000
Inyo			9,760	371.82	3,629,000
Kern	48,700	7.86	383,000	369.92	141,680,000
Kings	20,800	8.75	182,000	371.10	67,540,000
Lassen	23,100	4.76	110,000	330.67	36,374,000
Madera	7,900	8.73	69,000	369.25	25,478,000
Merced	41,100	7.37	303,000	347.15	105,188,000
Modoc	36,400	6.51	237,000	359.39	85,176,000
Mono			58,900	353.02	20,793,000
Monterey	694	3.13	2,170	200.00	434,000
Plumas	5,480	3.69	20,200	320.69	6,478,000
Riverside	38,400	8.00	307,000	318.21	97,690,000
Sacramento	12,600	5.21	65,600	342.77	22,486,000
San Bernardino	2,920	6.47	18,900	335.82	6,347,000
San Joaquin	40,200	7.02	282,000	372.52	105,052,000
San Luis Obispo	1,030	5.65	5,820	488.32	2,842,000
Shasta	2,700	5.30	14,300	361.26	5,166,000
Sierra	3,220	3.70	11,900	319.92	3,807,000
Siskiyou	35,000	6.26	219,000	208.73	45,712,000
Solano	16,200	5.78	93,600	330.62	30,946,000
Stanislaus	12,300	7.80	96,000	360.75	34,632,000
Sutter	3,880	5.77	22,400	315.85	7,075,000
Tehama	1,130	4.03	4,550	341.10	1,552,000
Tulare	28,900	8.48	245,000	381.00	93,345,000
Yolo	20,200	5.59	113,000	348.00	39,324,000
Yuba	147	3.85	566	321.56	182,000
Sum of Others	7,100				13,624,000
State Total	602,171	6.68	4,041,756	335.36	1,369,068,000

Alfalfa, Silage		Tons/Acre	Tons		
Madera			23,200	58.92	1,367,000
Merced			165,000	74.82	12,345,000
Riverside	4,140	8.00	33,100	325.02	10,758,000
Tulare			312,000	112.00	34,944,000
Sum of Others	3,420				1,159,000
State Total	7,560	8.00	533,300	111.41	60,573,000

Commodity Data, 2022					
County	Harvested Acreage	Yield Per Acre	Production	Price Per	Total Value
				Dollars	
Almonds, All ¹					
Butte	35,900				109,861,000
Colusa	55,400				86,541,000
Glenn	68,800				116,663,000
Kern	223,000				952,068,000
Kings	38,800				132,323,000
Merced	166,000				560,120,000
Placer	4,290				4,878,000
Sacramento	3,740				7,525,000
San Joaquin	116,000				453,176,000
Solano	17,900				21,290,000
Stanislaus	212,000				752,971,000
Tulare	90,900				344,918,000
Yolo	47,900				63,696,000
Yuba	3,240				3,464,000
Sum of Others	499,000				1,729,049,000
State Total	1,582,870				5,338,543,000

¹ Includes Almonds, Hulls; Almonds, Nuts; Almonds, Other By-Products.

Almonds, Hulls		Tons		
Butte		52,400	244.77	12,826,000
Colusa		55,400	70.99	3,933,000
Fresno		542,000	193.00	104,606,000
Glenn		43,800	245.16	10,738,000
Kings		79,100	129.94	10,278,000
Madera		328,000	205.16	67,294,000
Merced		309,000	252.59	78,051,000
San Joaquin		242,000	212.90	51,521,000
Stanislaus		444,000	194.62	86,413,000
Tulare		175,000	214.00	37,450,000
Yolo		24,000	130.00	3,120,000
Yuba		1,420	129.58	184,000
Sum of Others				6,014,000
State Total		2,296,120	203.13	472,428,000



Commodity Data, 2022

County	Harvested Acreage	Yield Per Acre	Production	Price Per	Total Value
				Dollars	
Almonds, Nuts		<i>Tons/Acre</i>	<i>Tons</i>		
Butte	35,900	0.90	32,300	3,004.18	97,035,000
Colusa	55,400	0.52	28,800.00	2,868.33	82,608,000
Fresno	303,000	1.05	318,000	3,148.00	1,001,064,000
Glenn	68,800	0.51	35,100	3,017.81	105,925,000
Kern	223,000	1.04	231,000	3,661.43	845,790,000
Kings	38,800	1.02	39,500	3,082.25	121,749,000
Madera	158,000	1.06	167,000	3,014.64	503,445,000
Merced	166,000	1.04	172,000	2,802.73	482,069,000
Placer	4,290	0.40	1,720	2,836.05	4,878,000
Sacramento	3,740	0.70	2,620	2,872.14	7,525,000
San Joaquin	116,000	1.04	121,000	3,282.46	397,177,000
Solano	17,900	0.44	7,920	2,688.13	21,290,000
Stanislaus	212,000	1.05	222,000	2,970.48	659,447,000
Sutter	18,000	0.24	4,320	2,970.37	12,832,000
Tehama	20,000	0.38	7,590	3,156.52	23,958,000
Tulare	90,900	1.07	97,300	3,160.00	307,468,000
Yolo	47,900	0.40	19,200	3,155.00	60,576,000
Yuba	3,240	0.35	1,140	2,877.19	3,280,000
Sum of Others	1				4,080
State Total	1,582,871	0.95	1,508,510	3,140.92	4,738,120,080

Almonds, Other By-Products		<i>Tons</i>		
Kern		629,000	168.96	106,278,000
Kings		19,800	14.95	296,000
San Joaquin		121,000	37.01	4,478,000
Stanislaus		222,000	32.03	7,111,000
Sum of Others				9,831,000
State Total		991,800	119.14	127,994,000

Animal Fiber, Misc		<i>Lbs</i>		
Tehama		20,600	1.40	28,800
Sum of Others				3,840
State Total		20,600	1.40	32,640



Commodity Data, 2022

County	Harvested Acreage	Yield Per Acre	Production	Price Per	Total Value
				Dollars	
Animal Fiber, Wool			Lbs		
Glenn			31,600	1.39	44,000
Inyo			29,400	1.58	46,400
Kern			479,000	1.40	671,000
Kings			27,700	1.41	39,000
Marin			30,400	1.01	30,700
Mendocino			20,000	1.05	21,000
Merced			63,000	1.41	89,000
Mono			62,700	1.59	100,000
Plumas			1,930	5.14	9,930
San Joaquin			69,000	2.19	151,000
Sierra			2,520	9.01	22,700
Siskiyou			13,100	1.95	25,500
Solano			37,400	2.89	108,000
Sonoma			31,500	0.25	7,900
Stanislaus			15,900	1.13	18,000
Sum of Others					867,000
State Total			915,150	1.51	2,251,130

Anise/Fennel		Tons/Acre	Tons		
Monterey	631	19.02	12,000	891.17	10,694,000
Sum of Others	97				573,000
State Total	728	19.02	12,000	891.17	11,267,000



Commodity Data, 2022					
County	Harvested Acreage	Yield Per Acre	Production	Price Per	Total Value
				Dollars	
Apiary, All ¹					
Butte					19,163,000
Calaveras					37,900
Colusa					26,099,000
Contra Costa					1,480,000
El Dorado					2,096,000
Fresno					150,993,000
Inyo					224,000
Kern					103,779,000
Kings					20,047,000
Madera					69,758,000
Mariposa					53,800
Merced					64,738,000
Monterey					249,000
Nevada					520,000
Placer					512,000
Plumas					54,900
Riverside					5,950,000
Sacramento					1,330,000
San Bernardino					2,322,000
San Diego					3,238,000
San Joaquin					56,907,000
San Mateo					404,000
Santa Barbara					735,000
Santa Clara					294,000
Shasta					10,839,000
Sierra					9,010
Solano					10,250,000
Sonoma					337,000
Sutter					9,852,000
Tehama					20,957,000
Tulare					70,174,000
Tuolumne					34,200
Ventura					9,575,000
Yolo					21,173,000
Yuba					825,000
Sum of Others					166,918,000
State Total					851,927,810

¹ Includes Apiary, Bees, Package; Apiary, Bees, Queen; Apiary, Beeswax; Apiary, Honey; Apiary, Misc; Apiary, Pollination Fees.

Apiary, Bees, Package	Lbs		
Colusa	7,500	36.67	275,000
Glenn	138,000	37.19	5,132,000
Merced	57,700	32.65	1,884,000
Sum of Others			224,000
State Total	203,200	35.88	7,515,000

Commodity Data, 2022					
County	Harvested Acreage	Yield Per Acre	Production	Price Per	Total Value
				Dollars	
Apiary, Bees, Queen			Count		
Colusa			38,500	28.00	1,078,000
Glenn			391,000	25.61	10,015,000
Merced			32,400	22.78	738,000
Shasta			275,000	28.44	7,821,000
Sum of Others					2,286,000
State Total			736,900	26.67	21,938,000
Apiary, Beeswax			Lbs		
Fresno			491,000	5.28	2,592,000
Kern			633,000	4.60	2,911,000
Kings			8,290	3.15	26,100
Madera			21,000	3.62	76,000
Merced			43,800	3.01	132,000
Monterey			412	4.76	1,960
Plumas			192	8.49	1,630
Riverside			12,100	3.15	38,100
Tulare			160,000	3.81	610,000
Ventura			30,000	4.50	135,000
Sum of Others					765,000
State Total			1,399,794	4.66	7,288,790
Apiary, Honey			Lbs		
Colusa			50,000	3.00	150,000
Fresno			8,859,000	2.92	25,868,000
Inyo			49,100	4.46	219,000
Kern			5,062,000	2.66	13,466,000
Kings			404,000	2.81	1,135,000
Madera			844,000	3.32	2,802,000
Merced			2,191,000	2.66	5,829,000
Monterey			11,500	2.80	32,200
Nevada			33,800	6.15	208,000
Plumas			5,330	10.00	53,300
Riverside			569,000	2.00	1,137,000
San Joaquin			4,818,000	2.95	14,213,000
San Mateo			37,000	10.92	404,000
Shasta			45,000	3.20	144,000
Sierra			901	10.00	9,010
Stanislaus			6,613,000	2.87	18,980,000
Tulare			9,703,000	2.93	28,389,000
Ventura			1,720,000	3.34	5,741,000
Sum of Others					6,950,000
State Total			41,015,631	2.90	125,729,510

Commodity Data, 2022					
County	Harvested Acreage	Yield Per Acre	Production	Price Per	Total Value
				Dollars	
Apiary, Misc					
Butte					3,709,000
Calaveras					37,900
Colusa					775,000
Contra Costa					1,480,000
El Dorado					2,096,000
Inyo					5,000
Kern					1,000
Mariposa					53,800
Nevada					313,000
Placer					512,000
Sacramento					1,330,000
San Bernardino					2,322,000
San Diego					651,000
San Joaquin					882,000
Santa Barbara					735,000
Santa Clara					294,000
Shasta					1,041,000
Solano					910,000
Sonoma					337,000
Tehama					12,722,000
Tuolumne					34,200
Yolo					21,173,000
Sum of Others					1,073,000
State Total					52,486,900

Apiary, Pollination Fees		Colonies		
Butte				15,454,000
Colusa		111,000	214.60	23,821,000
Fresno				122,533,000
Glenn				27,708,000
Imperial		67,100	74.05	4,969,000
Kern		471,000	185.56	87,401,000
Kings		101,000	186.99	18,886,000
Madera		320,000	209.00	66,880,000
Merced		261,000	215.15	56,155,000
Monterey		3,300	65.15	215,000
Riverside		25,000	191.00	4,775,000
San Diego				2,586,000
San Joaquin		218,000	191.80	41,812,000
Shasta		9,000	203.67	1,833,000
Solano		60,000	155.67	9,340,000
Stanislaus		436,000	202.57	88,321,000
Sutter		70,400	108.07	7,608,000
Tehama		41,000	200.85	8,235,000
Tulare		225,000	183.00	41,175,000
Ventura				3,699,000
Yuba		13,800	59.78	825,000
Sum of Others				2,739,000
State Total		2,432,600	190.02	636,970,000

Commodity Data, 2022

County	Harvested Acreage	Yield Per Acre	Production	Price Per	Total Value
				Dollars	
Apples					
		<i>Tons/Acre</i>	<i>Tons</i>		
El Dorado	831				5,244,000
Humboldt	35				153,000
Mendocino	216	1.10	237	691.98	164,000
Placer	48	0.48	23	3,365.22	77,400
Riverside	22	2.64	58	1,982.76	115,000
San Benito	366	20.00	7,320	380.06	2,782,000
San Bernardino	207	1.39	287	5,853.66	1,680,000
San Diego	115	0.76	88	2,772.73	244,000
San Joaquin	1,430	16.78	24,000	559.33	13,424,000
Santa Cruz	1,940	17.32	33,600	375.54	12,618,000
Siskiyou	26				38,000
Sonoma	2,070	2.83	5,850	550.60	3,221,000
Sum of Others	891				3,845,000
State Total	8,197	11.14	71,463	480.32	43,605,400

Apricots					
		<i>Tons/Acre</i>	<i>Tons</i>		
Contra Costa	169	2.80	473	3,369.98	1,594,000
Fresno	1,090	8.05	8,780	2,203.76	19,349,000
Kings	468	11.45	5,360	2,181.16	11,691,000
Riverside	12	2.42	29	1,989.65	57,700
San Benito	500	3.00	1,500	1,255.33	1,883,000
San Joaquin	592	2.70	1,600	698.75	1,118,000
Santa Clara	99	1.20	119	2,243.70	267,000
Stanislaus	1,920				8,973,000
Tulare	539	7.24	3,900	3,430.00	13,377,000
Sum of Others	331				1,367,000
State Total	5,720	6.27	21,761	2,267.21	59,676,700

Aquaculture, All ¹

Humboldt	11,800,000
Imperial	18,462,000
Marin	5,975,000
Riverside	5,749,000
Sacramento	32,427,000
Sum of Others	10,213,000
State Total	84,626,000

¹ Includes Aquaculture, Baitfish; Aquaculture, Catfish; Aquaculture, Crustaceans; Aquaculture, Misc; Aquaculture, Mollusks; Aquaculture, Ornamental Fish; Aquaculture, Sport or Game Fish.

Aquaculture, Catfish

Riverside	459,000
State Total	459,000

Commodity Data, 2022					
County	Harvested Acreage	Yield Per Acre	Production	Price Per	Total Value
				Dollars	
Aquaculture, Misc					
Imperial					18,462,000
Marin					5,975,000
Riverside					5,290,000
Sacramento					32,427,000
Sum of Others					10,213,000
State Total					72,367,000
Aquaculture, Mollusks					
Humboldt					11,800,000
State Total					11,800,000
Artichokes					
		<i>Tons/Acre</i>	<i>Tons</i>		
Monterey	3,020	7.95	24,000	1,598.58	38,366,000
Riverside	1,010	7.10	7,170	2,100.00	15,057,000
San Mateo	31	2.39	74	2,378.38	176,000
Ventura	485	5.90	2,860	2,148.95	6,146,000
Sum of Others	186				148,000
State Total	4,732	7.50	34,104	1,751.85	59,893,000
Asparagus					
Sum of Others	891				9,089,000
State Total	891				9,089,000
Avocados					
		<i>Tons/Acre</i>	<i>Tons</i>		
Monterey	273	1.60	437	3,739.13	1,634,000
Riverside	3,210	5.70	18,300	4,207.65	77,000,000
San Bernardino	380	2.27	862	4,878.19	4,205,000
San Diego	12,600	2.95	37,200	3,301.86	122,829,000
San Luis Obispo	4,650	2.41	11,200	2,999.73	33,597,000
Santa Barbara	5,610	3.21	18,000	3,313.89	59,650,000
Ventura	17,000	3.38	57,500	4,268.44	245,435,000
Sum of Others	1,000				7,371,000
State Total	44,723	3.28	143,499	3,793.41	551,721,000
Barley, All ¹					
Kings	1,470				2,141,000
Merced	916				663,000
Modoc	1,900				542,000
Monterey	3,430				666,000
Riverside	16				11,000
San Luis Obispo	2,400				444,000
Siskiyou	5,690				2,787,000
Tulare	445				414,000
Sum of Others	8,990				6,402,000
State Total	25,257				14,070,000

¹ Includes Barley, Feed; Barley, Grain; Barley, Hay; Barley, Malting; Barley, Misc Uses.

Commodity Data, 2022					
County	Harvested Acreage	Yield Per Acre	Production	Price Per	Total Value
				Dollars	
Barley, Grain		<i>Tons/Acre</i>	<i>Tons</i>		
Kern	550	1.93	1,060	353.77	375,000
Merced	916	2.30	2,110	314.22	663,000
Modoc	1,900	1.50	2,850	190.18	542,000
Monterey	3,430	0.84	2,880	231.25	666,000
Riverside	16	3.75	60	183.33	11,000
San Luis Obispo	2,400	0.63	1,510	294.04	444,000
Siskiyou	5,690	2.25	12,800	217.73	2,787,000
Tulare	445	2.94	1,310	316.03	414,000
Sum of Others	4,030				1,289,000
State Total	19,377	1.60	24,580	240.11	7,191,000
Barley, Misc Uses		<i>Tons/Acre</i>	<i>Tons</i>		
Kings	1,470	19.52	28,700	74.60	2,141,000
Sum of Others	4,410				4,738,000
State Total	5,880	19.52	28,700	74.60	6,879,000
Beans, All ¹		<i>Tons/Acre</i>	<i>Tons</i>		
Butte	910	1.50	1,360	1,505.88	2,048,000
Colusa	1,520	1.16	1,770	1,299.43	2,300,000
Fresno	5,030	1.46	7,360	961.96	7,080,000
Glenn	362	1.30	471	1,008.49	475,000
Kern	120	1.00	120	1,191.67	143,000
Monterey	1,350	1.55	2,090	2,273.21	4,751,000
San Joaquin	5,800	1.43	8,300	1,417.59	11,766,000
San Mateo	177	0.55	97	9,432.99	915,000
Santa Barbara	1,180				2,146,000
Solano	1,670	1.23	2,060	1,516.02	3,123,000
Stanislaus	2,980				7,001,000
Sutter	5,570	0.88	4,900	1,579.39	7,739,000
Tulare	988	0.96	948	1,240.51	1,176,000
Sum of Others	277				794,000
State Total	27,934	1.25	29,476	1,408.47	51,457,000
¹ Includes Beans, Blackeye (Peas); Beans, Chickpeas/Garbanzos; Beans, Fava; Beans, Kidney, Red; Beans, Lima, Dry; Beans, Misc, Excluding Chickpeas; Beans, Misc, Including Chickpeas; Beans, Pink; Beans, Red, Small; Beans, White, Small.					
Beans, Fresh (Snap)		<i>Tons/Acre</i>	<i>Tons</i>		
Riverside	640	5.59	3,580	951.12	3,405,000
San Bernardino	20	1.40	28	1,585.71	44,400
San Mateo	35	2.77	97	2,278.35	221,000
Santa Clara	908	2.63	2,390	1,866.53	4,461,000
Sum of Others	911				6,706,000
State Total	2,514	3.80	6,095	1,334.11	14,837,400
Beans, Lima, Dry					
Stanislaus	2,770				6,519,000
State Total	2,770				6,519,000

Commodity Data, 2022

County	Harvested Acreage	Yield Per Acre	Production	Price Per	Total Value
				Dollars	

Beans, Misc, Excluding Chickpeas

Stanislaus	208				482,000
Sum of Others	115				177,000
State Total	323				659,000

Beans, Misc, Including Chickpeas

		<i>Tons/Acre</i>	<i>Tons</i>		
Butte	910	1.50	1,360	1,505.88	2,048,000
Colusa	1,520	1.16	1,770	1,299.43	2,300,000
Fresno	5,030	1.46	7,360	961.96	7,080,000
Glenn	362	1.30	471	1,008.49	475,000
Kern	120	1.00	120	1,191.67	143,000
Monterey	1,350	1.55	2,090	2,273.21	4,751,000
San Joaquin	5,800	1.43	8,300	1,417.59	11,766,000
San Mateo	177	0.55	97	9,432.99	915,000
Santa Barbara	1,180				2,146,000
Solano	1,670	1.23	2,060	1,516.02	3,123,000
Sutter	5,570	0.88	4,900	1,579.39	7,739,000
Tulare	988	0.96	948	1,240.51	1,176,000
Sum of Others	162				617,000
State Total	24,839	1.25	29,476	1,408.47	44,279,000

Beets

		<i>Tons/Acre</i>	<i>Tons</i>		
Riverside	475	21.26	10,100	349.01	3,525,000
Ventura	807	12.76	10,300	722.04	7,437,000
Sum of Others	3,420				37,242,000
State Total	4,702	15.91	20,400	537.35	48,204,000

Berries, All ¹

El Dorado	63				616,000
Fresno	1,810				40,295,000
Placer	15				188,000
Riverside	90				5,469,000
San Diego	421				27,757,000
San Joaquin	2,510				64,350,000
San Luis Obispo	4,330				277,883,000
Santa Barbara	15,100				913,223,000
Tulare	2,420				56,229,000
Ventura	13,900				863,544,000
Sum of Others	19,000				1,473,835,000
State Total	59,659				3,723,389,000

¹ Includes Berries, Aronia; Berries, Blackberries; Berries, Blueberries; Berries, Boysenberries; Berries, Loganberries; Berries, Misc; Berries, Olallieberries; Berries, Raspberries; Berries, Strawberries, Fresh Market; Berries, Strawberries, Misc; Berries, Strawberries, Processing.

Commodity Data, 2022					
County	Harvested Acreage	Yield Per Acre	Production	Price Per	Total Value
				Dollars	
Berries, Blackberries		<i>Tons/Acre</i>	<i>Tons</i>		
Monterey	200	9.20	1,840	7,808.70	14,368,000
San Bernardino	5	1.00	5	12,700.00	63,500
Santa Barbara	1,110	6.02	6,680	7,004.19	46,788,000
Santa Cruz	1,200	9.42	11,300	7,341.86	82,963,000
Ventura	700	10.89	7,620	5,892.65	44,902,000
Sum of Others	154				2,711,000
State Total	3,369	8.54	27,445	6,889.58	191,795,500
Berries, Blueberries		<i>Tons/Acre</i>	<i>Tons</i>		
El Dorado	33	0.46	15	10,733.33	161,000
Fresno	1,600	3.57	5,710	6,623.99	37,823,000
Kern	1,060	2.36	2,500	9,216.00	23,040,000
San Bernardino	3	1.00	3	10,633.33	31,900
San Joaquin	2,510	4.66	11,700	5,500.00	64,350,000
Santa Barbara	458	6.51	2,980	7,991.95	23,816,000
Tulare	2,420	2.57	6,220	9,040.03	56,229,000
Ventura	767	6.60	5,060	8,712.85	44,087,000
Sum of Others	349				5,996,000
State Total	9,200	3.86	34,188	7,298.99	255,533,900
Berries, Misc		<i>Tons/Acre</i>	<i>Tons</i>		
El Dorado	30	1.37	41	11,121.95	456,000
San Diego					14,945,000
Sum of Others	62				1,141,000
State Total	92	1.37	41	11,121.95	16,542,000
Berries, Raspberries		<i>Tons/Acre</i>	<i>Tons</i>		
Monterey	552	9.86	5,440	7,905.70	43,007,000
Santa Barbara	587	6.75	3,960	8,004.04	31,696,000
Santa Cruz	1,710	8.83	15,100	6,705.89	101,259,000
Ventura	2,180	6.15	13,400	8,347.09	111,851,000
Sum of Others	79				18,400
State Total	5,108	7.54	37,900	7,594.01	287,831,400
Berries, Strawberries, All ¹		<i>Tons/Acre</i>	<i>Tons</i>		
Monterey	11,000	36.09	397,000	2,415.05	958,774,000
Placer	15	5.00	75	2,506.67	188,000
Riverside	90	18.00	1,620	3,375.93	5,469,000
San Bernardino	47	9.72	457	3,194.75	1,460,000
San Diego	215	21.81	4,690	2,731.77	12,812,000
San Luis Obispo	4,330	27.94	121,000	2,296.55	277,883,000
Santa Barbara	12,900	25.50	329,000	2,464.81	810,923,000
Santa Cruz	2,570	34.24	88,000	2,500.15	220,013,000
Ventura	10,300	21.75	224,000	2,958.50	662,704,000
Sum of Others	408				21,461,000
State Total	41,875	28.11	1,165,842	2,530.55	2,971,687,000

¹ Includes Berries, Strawberries, Fresh Market; Berries, Strawberries, Misc; Berries, Strawberries, Processing.

Commodity Data, 2022					
County	Harvested Acreage	Yield Per Acre	Production	Price Per	Total Value
				Dollars	
Berries, Strawberries, Fresh Market			Tons		
Monterey			379,000	2,500.10	947,538,000
San Luis Obispo			89,200	2,767.24	246,838,000
Santa Barbara			266,000	2,761.67	734,604,000
Ventura			174,000	3,457.85	601,666,000
Sum of Others					697,000
State Total			908,200	2,786.44	2,531,343,000
Berries, Strawberries, Misc			Tons/Acre	Tons	
Monterey	11,000				
Placer	15	5.00	75	2,506.67	188,000
Riverside	90	18.00	1,620	3,375.93	5,469,000
San Bernardino	47	9.72	457	3,194.75	1,460,000
San Diego	215	21.81	4,690	2,731.77	12,812,000
San Luis Obispo	4,330				
Santa Barbara	12,900				
Santa Cruz	2,570	34.24	88,000	2,500.15	220,013,000
Ventura	10,300				
Sum of Others	408				20,764,000
State Total	41,875	32.29	94,842	2,529.91	260,706,000
Berries, Strawberries, Processing			Tons		
Monterey			18,400	610.65	11,236,000
San Luis Obispo			31,700	979.34	31,045,000
Santa Barbara			62,400	1,223.06	76,319,000
Ventura			50,300	1,213.48	61,038,000
State Total			162,800	1,103.43	179,638,000
Biomass, For Energy			Tons		
Merced			87,100	20.00	1,742,000
State Total			87,100	20.00	1,742,000
Biomass, Orchard			Tons		
Kern			269,000	33.75	9,078,000
Merced			87,100	20.00	1,742,000
State Total			356,100	30.39	10,820,000
Bok Choy			Tons/Acre	Tons	
Monterey	225	10.22	2,300	1,297.39	2,984,000
Sum of Others	2,040				20,345,000
State Total	2,265	10.22	2,300	1,297.39	23,329,000

Commodity Data, 2022					
County	Harvested Acreage	Yield Per Acre	Production	Price Per	Total Value
				Dollars	
Broccoli		<i>Tons/Acre</i>	<i>Tons</i>		
Imperial	12,000	8.31	99,700	932.62	92,982,000
Monterey	46,000	9.78	450,000	1,153.44	519,049,000
Riverside	2,840	9.51	27,000	933.82	25,213,000
San Benito	2,790	7.10	19,800	1,214.44	24,046,000
San Luis Obispo	4,250	6.33	26,900	1,482.05	39,867,000
Santa Barbara	13,600	7.21	98,000	952.81	93,375,000
Santa Clara	824	4.11	3,390	1,245.13	4,221,000
Santa Cruz	890	9.80	8,720	789.22	6,882,000
Tulare	241	4.09	986	800.20	789,000
Ventura	316	9.27	2,930	1,565.53	4,587,000
Sum of Others	6,030				47,007,000
State Total	89,781	8.80	737,426	1,099.79	858,018,000
Brussels Sprouts		<i>Tons/Acre</i>	<i>Tons</i>		
Monterey	7,740	9.16	70,900	1,619.96	114,855,000
San Luis Obispo	1,460	10.14	14,800	1,720.34	25,461,000
San Mateo	476	10.48	4,990	1,653.31	8,250,000
Santa Barbara	1,220	8.44	10,300	1,425.53	14,683,000
Santa Cruz	831	12.03	10,000	1,337.60	13,376,000
Ventura	1,680	9.29	15,600	740.19	11,547,000
Sum of Others	465				977,000
State Total	13,872	9.44	126,590	1,486.47	189,149,000
Cabbage, Head		<i>Tons/Acre</i>	<i>Tons</i>		
Imperial	1,600	19.44	31,100	468.39	14,567,000
Monterey	4,160	24.28	101,000	474.72	47,947,000
Riverside	565	13.01	7,350	510.07	3,749,000
San Luis Obispo	1,430	26.78	38,300	482.24	18,470,000
Santa Barbara	1,770	24.69	43,700	499.93	21,847,000
Santa Clara	304	31.38	9,540	913.94	8,719,000
Ventura	2,640	29.20	77,100	521.57	40,213,000
Sum of Others	1,330				8,764,000
State Total	13,799	24.71	308,090	504.76	164,276,000
Cabbage, Napa		<i>Tons/Acre</i>	<i>Tons</i>		
Monterey	505	19.60	9,900	1,179.80	11,680,000
San Bernardino	352	9.89	3,480	707.18	2,461,000
Sum of Others	638				14,300,000
State Total	1,495	15.61	13,380	1,056.88	28,441,000

Commodity Data, 2022						
County	Harvested Acreage	Yield Per Acre	Production	Price Per	Total Value	
				Dollars		
Carrots		Tons/Acre	Tons			
Imperial	12,900	26.74	345,000	200.01	69,004,000	
Monterey	3,230	24.06	77,700	526.92	40,942,000	
Riverside	4,180	42.10	176,000	149.81	26,366,000	
San Benito	315				1,474,000	
San Bernardino	1				141,000	
San Joaquin	1,350	17.56	23,700	204.98	4,858,000	
Siskiyou	345	29.57	10,200	123.33	1,258,000	
Ventura	303	38.61	11,700	190.43	2,228,000	
Sum of Others	31,400				602,522,000	
State Total	54,024	28.88	644,300	224.52	748,793,000	



Commodity Data, 2022					
County	Harvested Acreage	Yield Per Acre	Production	Price Per	Total Value
				Dollars	
Cattle, All ¹					
Alameda					11,454,000
Alpine					1,408,000
Amador					15,610,000
Butte					11,315,000
Calaveras					12,861,000
Colusa					21,654,000
Contra Costa					25,806,000
El Dorado					9,800,000
Fresno					486,618,000
Glenn					40,555,000
Humboldt					33,770,000
Imperial					477,421,000
Inyo					10,287,000
Kern					313,861,000
Kings					151,274,000
Lake					1,628,000
Lassen					36,596,000
Madera					96,572,000
Marin					15,028,000
Mariposa					20,190,000
Mendocino					17,498,000
Merced					292,759,000
Modoc					114,578,000
Mono					11,604,000
Monterey					84,600,000
Napa					1,087,000
Nevada					7,722,000
Placer					11,872,000
Plumas					13,748,000
Riverside					11,600,000
Sacramento					16,747,000
San Benito					22,918,000
San Bernardino					78,203,000
San Diego					14,364,000
San Joaquin					128,954,000
San Luis Obispo					45,230,000
San Mateo					2,851,000
Santa Barbara					29,367,000
Santa Clara					4,817,000
Shasta					18,948,000
Sierra					6,391,000
Siskiyou					43,899,000
Solano					36,218,000
Sonoma					20,880,000
Stanislaus					192,802,000
Sutter					3,445,000
Tehama					25,058,000
Tulare					763,200,000
Tuolumne					5,791,000
Yolo					16,080,000
Sum of Others					432,000
State Total					3,837,371,000

¹ Includes Cattle, Beef, Cows; Cattle, Beef, Culls; Cattle, Beef, Misc; Cattle, Beef, Replacement Heifers; Cattle, Beef, Stockers & Feeders; Cattle, Dairy, Cows; Cattle, Dairy, Culls; Cattle, Dairy, Misc; Cattle, Dairy, Replacement Heifers; Cattle, Feedlot; Cattle, Misc.

Commodity Data, 2022					
County	Harvested Acreage	Yield Per Acre	Production	Price Per	Total Value
				Dollars	
Cattle, Beef, All ¹					
Fresno					40,835,000
Glenn					10,051,000
Lassen					36,596,000
Modoc					8,378,000
Monterey					60,348,000
Plumas					504,000
Sierra					229,000
Tehama					15,704,000
Tuolumne					503,000
State Total					173,148,000
¹ Includes Cattle, Beef, Cows; Cattle, Beef, Culls; Cattle, Beef, Misc; Cattle, Beef, Replacement Heifers; Cattle, Beef, Stockers & Feeders.					
Cattle, Beef, Cows					
Lassen					8,556,000
State Total					8,556,000
Cattle, Beef, Culls					
Lassen					4,243,000
Modoc					3,196,000
Plumas					504,000
Sierra					229,000
Tehama					3,099,000
Tuolumne					503,000
State Total					11,774,000
Cattle, Beef, Misc					
Fresno					17,237,000
Lassen					2,385,000
Modoc					118,000
State Total					19,740,000
Cattle, Beef, Replacement Heifers					
Lassen					8,935,000
Modoc					357,000
State Total					9,292,000
Cattle, Beef, Stockers & Feeders					
Fresno					23,598,000
Glenn					10,051,000
Lassen					12,477,000
Modoc					4,707,000
Monterey					60,348,000
Tehama					12,605,000
State Total					123,786,000

Commodity Data, 2022					
County	Harvested Acreage	Yield Per Acre	Production	Price Per	Total Value
				Dollars	
Cattle, Dairy, All ¹					
Fresno					239,451,000
Glenn					23,925,000
Madera					34,255,000
Tehama					1,751,000
State Total					299,382,000
<i>¹ Includes Cattle, Dairy, Cows; Cattle, Dairy, Culls; Cattle, Dairy, Misc; Cattle, Dairy, Replacement Heifers.</i>					
Cattle, Dairy, Cows					
Glenn					23,925,000
State Total					23,925,000
Cattle, Dairy, Culls					
Fresno					32,661,000
State Total					32,661,000
Cattle, Dairy, Misc					
Fresno					206,790,000
Tehama					1,751,000
State Total					208,541,000
Cattle, Dairy, Replacement Heifers					
Madera					34,255,000
State Total					34,255,000
Cattle, Feedlot					
Fresno					206,332,000
Imperial					477,421,000
Siskiyou					19,609,000
State Total					703,362,000



Commodity Data, 2022					
County	Harvested Acreage	Yield Per Acre	Production	Price Per	Total Value
				Dollars	
Cattle, Misc					
Alameda					11,454,000
Alpine					1,408,000
Amador					15,610,000
Butte					11,315,000
Calaveras					12,861,000
Colusa					21,654,000
Contra Costa					25,806,000
El Dorado					9,800,000
Glenn					6,579,000
Humboldt					33,770,000
Inyo					10,287,000
Kern					313,861,000
Kings					151,274,000
Lake					1,628,000
Madera					62,317,000
Marin					15,028,000
Mariposa					20,190,000
Mendocino					17,498,000
Merced					292,759,000
Modoc					106,200,000
Mono					11,604,000
Monterey					24,252,000
Napa					1,087,000
Nevada					7,722,000
Placer					11,872,000
Plumas					13,244,000
Riverside					11,600,000
Sacramento					16,747,000
San Benito					22,918,000
San Bernardino					78,203,000
San Diego					14,364,000
San Joaquin					128,954,000
San Luis Obispo					45,230,000
San Mateo					2,851,000
Santa Barbara					29,367,000
Santa Clara					4,817,000
Shasta					18,948,000
Sierra					6,161,000
Siskiyou					24,290,000
Solano					36,218,000
Sonoma					20,880,000
Stanislaus					192,802,000
Sutter					3,445,000
Tehama					7,603,000
Tulare					763,200,000
Tuolumne					5,288,000
Yolo					16,080,000
Sum of Others					432,000
State Total					2,661,478,000

Commodity Data, 2022					
County	Harvested Acreage	Yield Per Acre	Production	Price Per	Total Value
				Dollars	
Cauliflower		<i>Tons/Acre</i>	<i>Tons</i>		
Imperial	3,540	9.66	34,200	1,091.84	37,341,000
Monterey	17,800	10.56	188,000	1,153.51	216,860,000
Riverside	1,380	9.28	12,800	771.80	9,879,000
San Luis Obispo	3,900	9.69	37,800	1,029.92	38,931,000
Santa Barbara	10,400	8.94	93,000	1,039.32	96,657,000
Sum of Others	1,160				7,269,000
State Total	38,180	9.88	365,800	1,092.59	406,937,000
Celery		<i>Tons/Acre</i>	<i>Tons</i>		
Monterey	8,970	41.36	371,000	486.70	180,564,000
Riverside	810	30.99	25,100	425.18	10,672,000
San Benito	468	22.86	10,700	284.21	3,041,000
San Luis Obispo	1,140	27.72	31,600	498.54	15,754,000
Santa Barbara	4,660	28.11	131,000	514.63	67,416,000
Ventura	12,500	34.72	434,000	293.32	127,301,000
Sum of Others	2,560				45,331,000
State Total	31,108	35.15	1,003,400	403.38	450,079,000
Chard		<i>Tons/Acre</i>	<i>Tons</i>		
Monterey	1,000	5.82	5,820	1,800.00	10,476,000
Sum of Others	2,010				9,504,000
State Total	3,010	5.82	5,820	1,800.00	19,980,000
Cherries		<i>Tons/Acre</i>	<i>Tons</i>		
Contra Costa	1,010	1.76	1,780	4,327.53	7,703,000
Fresno	4,300	1.65	7,100	4,896.06	34,762,000
Kern	3,960	2.75	10,900	7,566.24	82,472,000
Kings	1,650	2.63	4,340	5,526.27	23,984,000
Madera	650	3.80	2,470	4,959.11	12,249,000
Riverside	10	1.00	10	3,800.00	38,000
Sacramento	1,520	1.70	2,580	3,741.86	9,654,000
San Benito	448	2.00	896	1,772.32	1,588,000
San Joaquin	20,900	2.60	54,400	5,147.02	279,998,000
Santa Clara	1,170	1.23	1,440	5,165.28	7,438,000
Stanislaus	3,890				39,674,000
Tulare	2,320	2.66	6,170	5,259.97	32,454,000
Sum of Others	1,230				12,654,000
State Total	43,058	2.43	92,086	5,346.52	544,668,000
Chickens, All ¹					
Merced					325,531,000
San Bernardino					1,861,000
San Diego					4,707,000
San Joaquin					2,566,000
Sum of Others					330,862,000
State Total					665,527,000

¹ Includes Chickens, Broilers; Chickens, Layers; Chickens, Misc.

Commodity Data, 2022					
County	Harvested Acreage	Yield Per Acre	Production	Price Per	Total Value
				Dollars	
Chickens, Broilers					
Merced					325,531,000
San Joaquin					2,566,000
Sum of Others					330,852,000
State Total					658,949,000
Chickens, Layers					
San Bernardino					1,861,000
State Total					1,861,000
Chickens, Misc					
San Diego					4,707,000
Sum of Others					10,700
State Total					4,717,700
Christmas Trees, Cultivated					
Mendocino					16,000
Nevada					86,300
San Bernardino	1				15,000
San Mateo	162				375,000
Santa Clara	264				309,000
Shasta					69,000
Siskiyou					222,000
Sonoma					141,000
Sum of Others	20				655,000
State Total	447				1,888,300
Christmas Trees, Cut					
El Dorado					1,807,000
Glenn					15,000
Modoc					1,420
Placer					314,000
Riverside					50,000
State Total					2,187,420
Cilantro					
		<i>Tons/Acre</i>	<i>Tons</i>		
Monterey	1,080	6.57	7,100	1,709.01	12,134,000
San Luis Obispo	1,090	5.45	5,940	2,200.84	13,073,000
Ventura	4,060	9.70	39,400	884.47	34,848,000
Sum of Others	5,470				65,945,000
State Total	11,700	8.42	52,440	1,145.21	126,000,000

Commodity Data, 2022					
County	Harvested Acreage	Yield Per Acre	Production	Price Per	Total Value
				Dollars	
Citrus, All ¹					
Butte	150				1,310,000
Imperial	6,000				50,364,000
Kern	68,200				1,149,221,000
Kings	231				1,961,000
Monterey	2,030				40,760,000
Placer	274				3,023,000
Riverside	19,400				132,062,000
San Luis Obispo	2,260				14,753,000
Santa Barbara	1,620				13,097,000
Tulare	135,000				1,839,527,000
Ventura	24,500				255,835,000
Sum of Others	76,700				706,535,000
State Total	336,365				4,208,448,000
¹ Includes Citrus, Misc; Citrus, Misc, By-Products; Grapefruit; Kumquats; Lemons; Limes; Oranges, Misc; Oranges, Navel; Oranges, Valencia; Pomelo; Tangelos; Tangerines & Mandarins.					
Citrus, Misc					
		Tons/Acre	Tons		
Butte	150	5.50	825	1,587.88	1,310,000
Fresno	2,040	14.71	30,000	585.00	17,550,000
Riverside	1,700	10.12	17,200	12.96	223,000
San Bernardino	22	5.09	112	305.36	34,200
Sum of Others	596				3,134,000
State Total	4,508	12.30	48,137	397.14	22,251,200
Citrus, Misc, By-Products					
			Tons		
Imperial					452,000
Kern			254,000	55.04	13,981,000
State Total			254,000	55.04	14,433,000
Corn, All ¹					
Colusa	837				1,400,000
Fresno	24,900				47,138,000
Glenn	5,820				9,590,000
Kings	47,700				123,941,000
Merced	92,000				169,532,000
Riverside	750				1,425,000
Sacramento	22,900				37,158,000
San Bernardino	798				1,345,000
San Joaquin	62,900				117,856,000
Solano	1,920				3,130,000
Sonoma	759				458,000
Sutter	4,530				10,553,000
Tehama	687				919,000
Tulare	126,000				295,093,000
Yolo	4,410				9,547,000
Sum of Others	107,000				235,800,000
State Total	503,911				1,064,885,000
¹ Includes Corn, Crazy (Corn Nuts); Corn, Grain; Corn, Popcorn; Corn, Silage; Corn, White.					

Commodity Data, 2022					
County	Harvested Acreage	Yield Per Acre	Production	Price Per	Total Value
				Dollars	
Corn, Grain		<i>Tons/Acre</i>	<i>Tons</i>		
Colusa	837	7.00	5,860	238.91	1,400,000
Glenn	5,260	6.05	31,800	269.15	8,559,000
Merced	2,630	4.64	12,200	481.23	5,871,000
Sacramento	9,670	4.90	47,400	272.55	12,919,000
San Joaquin	15,200	4.14	63,000	469.36	29,570,000
Solano	1,920	5.94	11,400	274.56	3,130,000
Sutter	4,530	6.20	28,100	375.55	10,553,000
Tehama	687	4.90	3,370	272.70	919,000
Tulare	1,250	4.20	5,250	490.10	2,573,000
Yolo	4,410	6.94	30,600	311.99	9,547,000
Sum of Others	6,770				1,594,000
State Total	53,164	5.15	238,980	355.85	86,635,000
Corn, Silage		<i>Tons/Acre</i>	<i>Tons</i>		
Fresno	24,900	20.80	518,000	91.00	47,138,000
Glenn	566	25.26	14,300	72.10	1,031,000
Kings	47,700	25.07	1,196,000	103.63	123,941,000
Madera	15,100	27.75	419,000	89.00	37,293,000
Merced	89,400	25.77	2,304,000	71.03	163,661,000
Riverside	750	25.33	19,000	75.00	1,425,000
Sacramento	13,200	25.38	335,000	72.36	24,239,000
San Bernardino	798	15.29	12,200	110.25	1,345,000
San Joaquin	47,700	25.58	1,220,000	72.37	88,286,000
Sonoma	759	10.44	7,920	57.83	458,000
Stanislaus	53,900	25.70	1,385,000	91.44	126,647,000
Tulare	125,000	22.72	2,840,000	103.00	292,520,000
Sum of Others	31,500				70,266,000
State Total	451,273	24.47	10,270,420	88.41	978,250,000
Corn, Sweet (Fresh)		<i>Tons/Acre</i>	<i>Tons</i>		
Contra Costa	3,040	10.86	33,000	573.24	18,917,000
Fresno	3,460	9.13	31,600	761.99	24,079,000
Imperial	7,050	10.58	74,600	325.54	24,285,000
Riverside	2,250	11.11	25,000	514.80	12,870,000
San Bernardino	49	4.22	207	1,333.33	276,000
San Joaquin	4,340	4.91	21,300	224.70	4,786,000
Santa Clara	1,290	6.21	8,010	869.41	6,964,000
Tulare	113	8.27	935	724.06	677,000
Sum of Others	602				3,131,000
State Total	22,194	9.02	194,652	477.03	95,985,000

Commodity Data, 2022					
County	Harvested Acreage	Yield Per Acre	Production	Price Per	Total Value
				Dollars	
Cotton, Lint, All ¹			Tons/Acre	Tons	
Glenn	1,510	0.75	1,130	1,403.54	1,586,000
Imperial	2,260	1.03	2,320	2,598.28	6,028,000
Kern	9,590	0.76	7,280	4,175.27	30,396,000
Kings	47,300	0.82	38,700	4,242.02	164,166,000
Merced	20,100	0.80	16,100	3,915.34	63,037,000
Riverside	6,690	1.45	9,700	2,000.00	19,400,000
Tulare	10,700	0.78	8,370	3,371.92	28,223,000
Sum of Others	37,100				127,405,000
State Total	135,250	0.85	83,600	3,742.06	440,241,000
¹ Includes Cotton, Lint, Misc; Cotton, Lint, Pima; Cotton, Lint, Upland.					
Cotton, Lint, Misc			Tons/Acre	Tons	
Tulare	10,700	0.78	8,370	3,371.92	28,223,000
Sum of Others	36,800				126,610,000
State Total	47,500	0.78	8,370	3,371.92	154,833,000
Cotton, Lint, Pima			Tons/Acre	Tons	
Kern	9,130	0.75	6,820	4,235.34	28,885,000
Kings	42,400	0.81	34,400	4,554.94	156,690,000
Merced	14,200	0.81	11,500	4,146.35	47,683,000
Sum of Others	320				795,000
State Total	66,050	0.80	52,720	4,424.47	234,053,000
Cotton, Lint, Upland			Tons/Acre	Tons	
Glenn	1,510	0.75	1,130	1,403.54	1,586,000
Imperial	2,260	1.03	2,320	2,598.28	6,028,000
Kern	465	0.97	450	3,357.78	1,511,000
Kings	4,930	0.87	4,270	1,750.82	7,476,000
Merced	5,900	0.78	4,610	3,330.59	15,354,000
Riverside	6,690	1.45	9,700	2,000.00	19,400,000
State Total	21,755	1.03	22,480	2,284.48	51,355,000
Cotton, Seed ¹			Tons		
Fresno			39,200	520.00	20,384,000
Glenn			1,890	399.47	755,000
Imperial			3,090	528.16	1,632,000
Kern			10,200	343.72	3,506,000
Kings			64,500	444.11	28,645,000
Merced			26,800	518.92	13,907,000
Riverside			14,000	250.93	3,513,000
Tulare			13,500	270.00	3,645,000
Sum of Others					92,000
State Total			173,180	438.78	76,079,000
¹ Excludes cotton seed for planting					

Commodity Data, 2022					
County	Harvested Acreage	Yield Per Acre	Production	Price Per	Total Value
				Dollars	
Cucumbers			Tons/Acre	Tons	
San Bernardino	4	5.75	23	7,304.35	168,000
San Diego	66	9.97	658	1,721.88	1,133,000
San Joaquin	3,870	6.98	27,000	289.22	7,809,000
Ventura	106	58.77	6,230	1,472.39	9,173,000
Sum of Others	71				1,233,000
State Total	4,117	8.38	33,911	539.15	19,516,000
Dates			Tons/Acre	Tons	
Imperial	2,940	2.34	6,870	3,460.70	23,775,000
Riverside	9,100	3.79	34,500	2,437.68	84,100,000
Sum of Others	31				100,000
State Total	12,071	3.44	41,370	2,607.57	107,975,000
Eggplant			Tons/Acre	Tons	
Fresno	830	11.78	9,780	1,131.80	11,069,000
Riverside	295	19.49	5,750	865.04	4,974,000
Sum of Others	58				419,000
State Total	1,183	13.80	15,530	1,033.03	16,462,000
Eggs, By-Products					
Kern					138,488,000
State Total					138,488,000
Eggs, Chicken, All ¹					
Humboldt					339,000
Kern					138,488,000
Merced					145,188,000
Nevada					149,000
Riverside					76,830,000
San Bernardino					88,686,000
San Joaquin					174,580,000
Solano					511,000
Sum of Others					159,028,000
State Total					783,799,000
¹ Includes Eggs, By-Products; Eggs, Chicken, Hatching; Eggs, Chicken, Market; Eggs, Chicken, Misc.					
Eggs, Chicken, Market			Doz		
Merced			79,411,000	1.83	145,188,000
Riverside			39,000,000	1.97	76,830,000
Sum of Others					74,987,000
State Total			118,411,000	1.88	297,005,000

Commodity Data, 2022					
County	Harvested Acreage	Yield Per Acre	Production	Price Per	Total Value
				Dollars	
Eggs, Chicken, Misc			Doz		
Humboldt			48,300	7.02	339,000
Nevada			22,100	6.74	149,000
San Bernardino			59,124,000	1.50	88,686,000
San Joaquin			45,108,000	3.87	174,580,000
Solano			88,000	5.81	511,000
Sum of Others					84,041,000
State Total			104,390,400	2.53	348,306,000
Eggs, Other			Doz		
Inyo					16,700
Plumas			5,020	5.58	28,000
Tehama					1,661,000
Sum of Others					9,260,000
State Total			5,020	5.58	10,965,700
Field Crops, Misc					
Alameda	419				4,654,000
Amador	1,080				666,000
Butte	3,660				9,861,000
Calaveras	652				128,000
Colusa					1,900,000
Contra Costa	1,860				1,770,000
Humboldt	2,570				2,795,000
Inyo	464				904,000
Kings	43,100				38,430,000
Lassen					250,000
Mariposa					13,900
Mendocino					2,150,000
Mono	1,460				1,169,000
Monterey	3,000				931,000
Placer	4,750				2,926,000
Riverside	820				746,000
Sacramento	2,570				2,964,000
San Benito					815,000
San Joaquin	350				418,000
San Luis Obispo	1,170				1,873,000
San Mateo	74				16,000
Santa Barbara	2,540				2,167,000
Santa Clara	187				296,000
Shasta					2,218,000
Siskiyou					2,435,000
Solano	4,590				5,808,000
Sonoma					415,000
Tulare	10,400				8,066,000
Ventura	1,300				1,924,000
Yolo	5,570				13,984,000
Yuba	4,990				13,437,000
Sum of Others	56,300				62,100,000
State Total	153,876				188,229,900

Commodity Data, 2022					
County	Harvested Acreage	Yield Per Acre	Production	Price Per	Total Value
				Dollars	
Figs		<i>Tons/Acre</i>	<i>Tons</i>		
Madera	4,600	1.96	9,020	2,927.72	26,408,000
Sum of Others	1,890				10,486,000
State Total	6,490	1.96	9,020	2,927.72	36,894,000
Firewood, Forest			<i>Cord</i>		
Kern			2,000	385.00	770,000
Merced			22,900	194.10	4,445,000
San Diego					875,000
San Joaquin			96,600	173.91	16,800,000
Tuolumne					14,600
Sum of Others					400
State Total			121,500	181.19	22,905,000
Firewood, Orchard			<i>Cord</i>		
Madera			4,000	275.00	1,100,000
Stanislaus			57,300	340.26	19,497,000
State Total			61,300	336.00	20,597,000
Forest Products, Misc					
Madera					924,000
Mariposa					198,000
Mono					13,500
Tulare					2,993,000
Tuolumne					7,869,000
Sum of Others					2,000
State Total					11,999,500



Commodity Data, 2022					
County	Harvested Acreage	Yield Per Acre	Production	Price Per	Total Value
				Dollars	
Forest Products, Timber			Mbf		
Amador			1,020	38.82	39,600
Butte			80,800	55.48	4,483,000
Calaveras			1,370	66.50	91,100
El Dorado			128,000	62.30	7,974,000
Fresno			13,900	41.37	575,000
Humboldt			234,000	424.22	99,267,000
Lake			14	195.00	2,730
Lassen			70,700	50.49	3,570,000
Madera			324	3.09	1,000
Mendocino			83,200	406.33	33,807,000
Modoc			7,650	41.83	320,000
Nevada			2,980	110.07	328,000
Placer			9,670	74.46	720,000
Plumas			384,000	62.51	24,003,000
San Mateo			10,100	384.85	3,887,000
Santa Clara			875	589.71	516,000
Santa Cruz			22,700	334.27	7,588,000
Shasta			68,400	204.68	14,000,000
Sierra			13,300	91.73	1,220,000
Siskiyou			144,000	186.85	26,906,000
Sonoma			41,300	175.30	7,240,000
Tehama			22,100	97.33	2,151,000
Tulare			11,600	34.66	402,000
Tuolumne			28,700	80.98	2,324,000
Yuba			5,880	99.66	586,000
State Total			1,386,583	174.53	242,001,430



Commodity Data, 2022					
County	Harvested Acreage	Yield Per Acre	Production	Price Per	Total Value
				Dollars	
Fruits & Nuts, Misc ¹					
Alameda	1,900				6,345,000
Amador	153				335,000
Butte	790				3,490,000
Calaveras					56,000
Colusa					25,000,000
Contra Costa	634				2,898,000
El Dorado					1,123,000
Humboldt	97				506,000
Inyo	32				426,000
Kings	5,390				41,690,000
Lake	8				41,200
Mariposa					84,800
Mendocino	100				1,085,000
Mono	17				48,100
Napa					154,000
Nevada	41				375,000
Placer					744,000
Plumas	4				73,400
Riverside	450				7,500,000
Sacramento	707				4,772,000
San Benito	519				12,426,000
San Joaquin	950				6,354,000
San Luis Obispo	4,080				36,162,000
San Mateo	114				890,000
Santa Barbara	490				2,361,000
Santa Clara	255				2,438,000
Santa Cruz					545,000
Shasta					108,000
Sierra	6				3,460
Siskiyou	5				9,000
Solano	658				7,364,000
Sonoma					401,000
Tulare	930				39,224,000
Tuolumne	225				33,100
Ventura	988				15,032,000
Yolo	1,050				5,204,000
Yuba	774				5,926,000
Sum of Others	20,900				247,366,000
State Total	42,267				478,593,060

¹ If fruits and vegetables is combined in the County's report, this is reported under "Fruits & Nuts, Misc"

Garlic		Tons/Acre	Tons		
Fresno	23,200	7.97	185,000	1,902.00	351,870,000
Kern	6,000	8.70	52,200	2,513.68	131,214,000
Modoc	425	5.79	2,460	560.98	1,380,000
Monterey	3,260	6.81	22,200	3,254.82	72,257,000
San Joaquin	3,480	7.70	26,800	653.51	17,514,000
Santa Clara	392	2.63	1,030	2,613.59	2,692,000
Sum of Others	3,310				13,260,000
State Total	40,067	7.88	289,690	1,991.53	590,187,000

Commodity Data, 2022					
County	Harvested Acreage	Yield Per Acre	Production	Price Per	Total Value
				Dollars	
Goats					
Amador					469,000
Plumas					38,900
Stanislaus					3,991,000
Tehama					805,000
Sum of Others					6,836,000
State Total					12,139,900

Grapefruit		<i>Tons/Acre</i>	<i>Tons</i>		
Imperial	642	15.73	10,100	686.04	6,929,000
Kern	1,400	17.21	24,100	944.19	22,755,000
Riverside	5,970	14.10	84,200	306.24	25,785,000
San Bernardino	119	12.86	1,530	844.44	1,292,000
San Diego	1,010	18.42	18,600	858.23	15,963,000
Tulare	2,960	21.99	65,100	641.00	41,729,000
Sum of Others	57				651,000
State Total	12,158	16.83	203,630	562.06	115,104,000



Commodity Data, 2022					
County	Harvested Acreage	Yield Per Acre	Production	Price Per	Total Value
				Dollars	
Grapes, All ¹		Tons/Acre	Tons		
Alameda	2,690	5.61	15,100	1,466.03	22,137,000
Amador	3,000	3.15	9,460	1,394.61	13,193,000
Calaveras	845	0.89	749	1,428.57	1,070,000
Colusa	1,270	4.85	6,160	954.87	5,882,000
Contra Costa	1,840	5.28	9,710	778.17	7,556,000
Humboldt	102	2.00	204	2,000.00	408,000
Kern	96,200	10.79	1,038,000	1,343.46	1,394,510,000
Kings	5,720	14.51	83,000	473.48	39,299,000
Lake	11,000	4.14	45,600	1,858.68	84,756,000
Madera	54,500	9.89	539,000	433.94	233,893,000
Marin	153	1.60	245	3,391.84	831,000
Mendocino	16,500	2.86	47,100	1,793.74	84,485,000
Monterey	41,500	2.99	124,000	1,401.52	173,789,000
Napa	46,100	2.84	131,000	6,800.85	890,911,000
Nevada	406	0.90	366	1,633.88	598,000
Placer	350	2.10	735	1,499.32	1,102,000
Riverside	7,460	5.68	42,400	2,356.20	99,903,000
Sacramento	38,300	7.31	280,000	674.34	188,815,000
San Benito	5,320	5.39	28,700	1,415.19	40,616,000
San Bernardino	372	0.59	219	1,461.19	320,000
San Joaquin	87,800	7.46	655,000	642.84	421,061,000
San Luis Obispo	42,300	3.24	137,000	1,911.95	261,937,000
San Mateo	176				1,841,000
Santa Barbara	13,500	3.04	41,000	2,349.83	96,343,000
Santa Clara	1,590	2.59	4,120	1,968.93	8,112,000
Santa Cruz	665	2.47	1,640	3,650.00	5,986,000
Shasta	200	1.90	380	1,250.00	475,000
Solano	3,900	5.95	23,200	1,127.76	26,164,000
Sonoma	57,000	3.35	191,000	2,867.59	547,709,000
Stanislaus	7,400	9.80	72,500	560.17	40,612,000
Tehama	209	2.46	513	1,943.47	997,000
Tulare	42,500	13.53	575,000	1,462.85	841,137,000
Yolo	18,900	5.03	95,100	683.93	65,042,000
Sum of Others	189,000				1,345,628,000
State Total	798,768	6.89	4,198,201	1,333.82	6,947,118,000

¹ Includes Grapes, Misc; Grapes, Raisin; Grapes, Table; Grapes, Wine, Misc; Grapes, Wine, Red; Grapes, Wine, White.

Grapes, Misc		Tons/Acre	Tons		
Contra Costa	1,840	5.28	9,710	778.17	7,556,000
San Joaquin	87,800	7.46	655,000	642.84	421,061,000
Stanislaus	308				6,076,000
Sum of Others	636				6,419,000
State Total	90,584	7.42	664,710	644.82	441,112,000

Commodity Data, 2022					
County	Harvested Acreage	Yield Per Acre	Production	Price Per	Total Value
				Dollars	
Grapes, Raisin ¹		Tons/Acre	Tons		
Fresno	82,600	10.61	876,000	371.00	325,000,000
Kern	13,000	16.23	211,000	553.41	116,770,000
Kings	1,690	12.78	21,600	373.89	8,076,000
Madera	19,600	10.36	203,000	401.81	81,568,000
Tulare	6,630	9.38	62,200	757.60	47,123,000
Sum of Others	25				124,000
State Total	123,545	11.12	1,373,800	421.12	578,661,000

¹ Production is reported on a fresh weight basis

Grapes, Table		Tons/Acre	Tons		
Fresno	31,800	10.47	333,000	1,971.32	656,450,000
Kern	59,400	10.20	606,000	1,968.82	1,193,106,000
Kings	867	11.65	10,100	1,506.54	15,216,000
Madera	1,600	13.81	22,100	2,133.62	47,153,000
Riverside	5,480	5.27	28,900	2,659.03	76,846,000
Tulare	30,000	14.40	432,000	1,761.31	760,887,000
Sum of Others	148				3,955,000
State Total	129,295	11.09	1,432,100	1,920.02	2,753,613,000



Commodity Data, 2022					
County	Harvested Acreage	Yield Per Acre	Production	Price Per	Total Value
				Dollars	
Grapes, Wine, All ¹		Tons/Acre	Tons		
Alameda	2,690	5.61	15,100	1,466.03	22,137,000
Amador	3,000	3.15	9,460	1,394.61	13,193,000
Calaveras	845	0.89	749	1,428.57	1,070,000
Colusa	1,270	4.85	6,160	954.87	5,882,000
Fresno	54,700	12.87	704,000	359.64	253,190,000
Humboldt	102	2.00	204	2,000.00	408,000
Kern	23,800	9.29	221,000	382.96	84,634,000
Kings	3,160	16.23	51,300	312.03	16,007,000
Lake	11,000	4.14	45,600	1,858.68	84,756,000
Madera	33,300	9.43	314,000	334.94	105,172,000
Marin	153	1.60	245	3,391.84	831,000
Mendocino	16,500	2.86	47,100	1,793.74	84,485,000
Merced	15,400	11.56	178,000	519.85	92,534,000
Monterey	41,500	2.99	124,000	1,401.52	173,789,000
Napa	46,100	2.84	131,000	6,800.85	890,911,000
Nevada	406	0.90	366	1,633.88	598,000
Placer	350	2.10	735	1,499.32	1,102,000
Riverside	1,980	6.87	13,600	1,695.37	23,057,000
Sacramento	38,300	7.31	280,000	674.34	188,815,000
San Benito	5,320	5.39	28,700	1,415.19	40,616,000
San Bernardino	372	0.59	219	1,461.19	320,000
San Diego	978	1.84	1,800	2,011.67	3,621,000
San Luis Obispo	42,300	3.24	137,000	1,911.95	261,937,000
San Mateo	176				1,841,000
Santa Barbara	13,500	3.04	41,000	2,349.83	96,343,000
Santa Clara	1,590	2.59	4,120	1,968.93	8,112,000
Santa Cruz	665	2.47	1,640	3,650.00	5,986,000
Shasta	200	1.90	380	1,250.00	475,000
Solano	3,900	5.95	23,200	1,127.76	26,164,000
Sonoma	57,000	3.35	191,000	2,867.59	547,709,000
Stanislaus	7,090	10.23	72,500	476.36	34,536,000
Tehama	209	2.46	513	1,943.47	997,000
Tulare	5,840	13.80	80,600	411.00	33,127,000
Yolo	18,900	5.03	95,100	683.93	65,042,000
Sum of Others	2,820				4,334,000
State Total	455,416	6.23	2,820,391	1,123.09	3,173,731,000

¹ Includes Grapes, Wine, Misc; Grapes, Wine, Red; Grapes, Wine, White.



Commodity Data, 2022					
County	Harvested Acreage	Yield Per Acre	Production	Price Per	Total Value
				Dollars	
Grapes, Wine, Misc		Tons/Acre	Tons		
Amador	3,000	3.15	9,460	1,394.61	13,193,000
Calaveras	845	0.89	749	1,428.57	1,070,000
Colusa	1,270	4.85	6,160	954.87	5,882,000
Fresno	54,700	12.87	704,000	359.64	253,190,000
Humboldt	102	2.00	204	2,000.00	408,000
Kern	23,800	9.29	221,000	382.96	84,634,000
Kings	3,160	16.23	51,300	312.03	16,007,000
Marin	153	1.60	245	3,391.84	831,000
Mendocino					84,485,000
Merced	15,400	11.56	178,000	519.85	92,534,000
Placer	350	2.10	735	1,499.32	1,102,000
Riverside	1,980	6.87	13,600	1,695.37	23,057,000
Sacramento	38,300	7.31	280,000	674.34	188,815,000
San Benito	5,320	5.39	28,700	1,415.19	40,616,000
San Bernardino	372	0.59	219	1,461.19	320,000
San Diego	978	1.84	1,800	2,011.67	3,621,000
San Luis Obispo	42,300	3.24	137,000	1,911.95	261,937,000
Santa Cruz	665	2.47	1,640	3,650.00	5,986,000
Shasta	200	1.90	380	1,250.00	475,000
Sonoma	57,000	3.35	191,000	2,867.59	547,709,000
Tehama	209	2.46	513	1,943.47	997,000
Tulare	5,840	13.80	80,600	411.00	33,127,000
Sum of Others	110				154,000
State Total	256,054	7.45	1,907,305	826.04	1,660,150,000
Grapes, Wine, Red		Tons/Acre	Tons		
Alameda	1,890	4.87	9,200	1,539.13	14,160,000
Lake	7,810	3.53	27,600	2,205.40	60,869,000
Madera	21,100	8.10	171,000	339.24	58,010,000
Mendocino	11,000	2.46	27,000		
Monterey	21,500	3.02	65,000	1,539.02	100,036,000
Napa	36,800	2.83	104,000	7,693.71	800,146,000
Nevada	314	1.15	361	1,639.89	592,000
San Mateo	136				1,437,000
Santa Barbara	7,140	2.87	20,500	2,737.17	56,112,000
Santa Clara	411	4.33	1,780	1,407.30	2,505,000
Solano	2,170	5.16	11,200	1,353.66	15,161,000
Stanislaus	4,360	10.83	47,200	501.80	23,685,000
Yolo	7,040	4.64	32,700	825.02	26,978,000
Sum of Others	2,360				3,863,000
State Total	124,031	4.26	517,541	2,361.18	1,163,554,000

Commodity Data, 2022					
County	Harvested Acreage	Yield Per Acre	Production	Price Per	Total Value
				Dollars	
Grapes, Wine, White		<i>Tons/Acre</i>	<i>Tons</i>		
Alameda	802	7.41	5,940	1,342.93	7,977,000
Lake	3,180	5.69	18,100	1,319.72	23,887,000
Madera	12,200	11.72	143,000	329.80	47,162,000
Mendocino	5,530	3.63	20,100		
Monterey	20,000	2.98	59,500	1,239.55	73,753,000
Napa	9,320	2.93	27,300	3,324.76	90,766,000
Nevada	92	0.05	5	1,140.00	5,700
San Mateo	40				404,000
Santa Barbara	6,320	3.23	20,400	1,972.11	40,231,000
Santa Clara	1,180	1.98	2,340	2,396.15	5,607,000
Solano	1,730	6.94	12,000	916.92	11,003,000
Stanislaus	2,730	9.27	25,300	428.89	10,851,000
Yolo	11,800	5.29	62,400	610.00	38,064,000
Sum of Others	355				317,000
State Total	75,279	5.29	396,385	928.30	350,027,700
Green Chop		<i>Tons/Acre</i>	<i>Tons</i>		
Sonoma	270	11.81	3,190	31.98	102,000
Sum of Others	4,240				3,927,000
State Total	4,510	11.81	3,190	31.98	4,029,000
Greens, Specialty		<i>Tons/Acre</i>	<i>Tons</i>		
Monterey	6,780	7.70	52,200	918.10	47,925,000
Ventura	578	10.26	5,930	826.98	4,904,000
Sum of Others	296				1,360,000
State Total	7,654	7.90	58,130	908.81	54,189,000



Commodity Data, 2022					
County	Harvested Acreage	Yield Per Acre	Production	Price Per	Total Value
				Dollars	
Hay, All ¹					
Alameda	2,540				805,000
Alpine	320				307,000
Amador	2,340				2,831,000
Butte	520				637,000
Colusa	9,000				15,271,000
Contra Costa	5,260				2,032,000
El Dorado	225				69,200
Fresno	56,200				85,488,000
Imperial	281,000				482,158,000
Inyo					3,629,000
Kern	82,700				168,927,000
Kings	24,200				69,858,000
Lassen	47,600				68,827,000
Marin	1,020				237,000
Merced	93,900				155,835,000
Modoc	72,100				126,130,000
Mono					20,793,000
Monterey	694				434,000
Napa	753				169,000
Plumas	7,900				7,676,000
Riverside	48,300				109,958,000
Sacramento	16,700				25,670,000
San Benito	8,750				5,919,000
San Joaquin	48,200				113,322,000
San Luis Obispo	9,770				9,643,000
San Mateo	734				300,000
Santa Clara	2,410				1,146,000
Shasta	20,500				36,703,000
Sierra	4,970				4,579,000
Siskiyou	56,300				66,712,000
Solano	37,000				47,178,000
Sonoma	6,340				18,095,000
Tulare	47,900				108,822,000
Tuolumne	332				109,000
Yolo	31,300				47,111,000
Yuba	1,190				565,000
Sum of Others	102,000				160,859,000
State Total	1,130,968				1,968,804,200

¹ Includes Alfalfa, Hay; Barley, Hay; Hay, Bermuda Grass; Hay, Grain, Misc; Hay, Misc; Hay, Sudan; Hay, Wild; Oats, Hay; Triticale, Hay; Wheat, Hay.

Hay, Bermuda Grass		Tons/Acre	Tons		
Imperial	64,100	5.93	380,000	267.22	101,542,000
Riverside	5,700	8.00	45,600	180.00	8,208,000
Sum of Others	20				7,460
State Total	69,820	6.10	425,600	257.87	109,757,460

Commodity Data, 2022					
County	Harvested Acreage	Yield Per Acre	Production	Price Per	Total Value
				Dollars	
Hay, Grain, Misc		Tons/Acre	Tons		
Amador	1,490				950,000
Colusa	1,560	3.83	5,970	215.07	1,284,000
Contra Costa	3,530	1.21	4,270	113.11	483,000
Kern	25,200	2.76	69,500	248.60	17,278,000
Lassen	5,790	3.47	20,100	249.70	5,019,000
Merced	39,600	4.09	162,000	217.43	35,224,000
Modoc	34,000	4.50	153,000	240.00	36,720,000
Plumas	950	1.86	1,770	254.80	451,000
Riverside	1,050	5.00	5,250	160.00	840,000
San Benito	8,750	2.46	21,500	275.30	5,919,000
San Diego	1,110	1.02	1,130	282.30	319,000
San Luis Obispo	8,750	1.92	16,800	404.82	6,801,000
San Mateo	569	2.27	1,290	210.08	271,000
Santa Clara	2,410	1.52	3,660	313.12	1,146,000
Sierra	961	1.64	1,580	254.43	402,000
Siskiyou	90				12,500
Solano	3,500	3.14	11,000	283.91	3,123,000
Sonoma	6,100	16.00	97,600	184.94	18,050,000
Sutter	2,440	2.58	6,300	193.02	1,216,000
Tehama	826	3.48	2,870	249.48	716,000
Tulare	14,400	1.67	24,000	293.00	7,032,000
Sum of Others	4,080				2,757,000
State Total	167,156	3.78	609,590	233.43	146,013,500
Hay, Misc		Tons/Acre	Tons		
Alameda	2,440	1.75	4,280	158.88	680,000
Alpine	320	3.25	1,040	295.19	307,000
El Dorado	225	1.05	236	293.22	69,200
Glenn	1,550	4.10	6,350	291.02	1,848,000
Imperial	20,100	9.80	197,000	242.44	47,760,000
Kern	2,550	3.10	7,900	255.57	2,019,000
Lassen	18,800	4.10	77,100	355.82	27,434,000
Marin	1,020	1.70	1,730	136.99	237,000
Napa	753	1.50	1,130	149.56	169,000
Plumas	1,460	2.01	2,930	254.95	747,000
Sacramento	1,490	3.29	4,900	298.16	1,461,000
San Joaquin	8,030	5.92	47,500	174.10	8,270,000
Shasta	17,800				31,537,000
Sierra	784	1.85	1,450	255.17	370,000
Siskiyou	20,500	4.43	90,800	229.50	20,839,000
Solano	8,810	2.51	22,100	259.59	5,737,000
Tehama	1,150	2.85	3,280	327.44	1,074,000
Tuolumne	332	1.09	361	301.94	109,000
Yolo	11,100	2.78	30,900	252.01	7,787,000
Yuba	1,040	1.43	1,490	257.05	383,000
Sum of Others	5,300				1,609,000
State Total	125,554	4.90	502,477	253.34	160,446,200

Commodity Data, 2022					
County	Harvested Acreage	Yield Per Acre	Production	Price Per	Total Value
				Dollars	
Hay, Sudan			Tons/Acre		Tons
Imperial	49,200	4.72	232,000	272.07	63,121,000
Merced	13,200	3.55	46,900	328.85	15,423,000
Riverside	2,740	5.00	13,700	200.00	2,740,000
Sacramento	1,300	4.72	6,130	210.44	1,290,000
San Bernardino	403	6.13	2,470	136.03	336,000
Solano	4,070	4.05	16,500	263.58	4,349,000
Tulare	4,620	4.39	20,300	416.01	8,445,000
Sum of Others	4,610				3,795,000
State Total	80,143	4.47	338,000	283.15	99,499,000
Hay, Wild			Tons/Acre		Tons
Modoc	1,680	6.01	10,100	419.21	4,234,000
San Mateo	165	1.57	259	111.97	29,000
Sonoma	241	1.85	447	99.55	44,500
State Total	2,086	5.18	10,806	398.62	4,307,500
Hemp					
Riverside	40				2,000,000
San Benito	48				890,000
Sonoma	5				1,800,000
Ventura	12				1,285,000
Sum of Others	403				1,969,000
State Total	508				7,944,000
Herbs & Spices			Tons/Acre		tons
Riverside	1,080	7.28	7,860	525.06	4,127,000
San Bernardino	39	3.44	134	11,164.18	1,496,000
San Diego	162	9.88	1,600	7,810.00	12,496,000
Sum of Others	228				1,159,000
State Total	1,509	7.49	9,594	1,888.58	19,278,000
Hogs & Pigs					
Amador					23,500
Fresno					8,454,000
Glenn					92,000
Kern					146,000
Mendocino					81,300
Monterey					261,000
San Diego					232,000
Shasta					167,000
Sonoma					472,000
Stanislaus					3,797,000
Tuolumne					15,900
Sum of Others					452,000
State Total					14,193,700
Horseradish			Tons/Acre		Tons
Modoc	1,080	2.50	2,700	500.00	1,350,000
Siskiyou	170	0.12	21	10,619.05	223,000
State Total	1,250	2.18	2,721	578.10	1,573,000

Commodity Data, 2022					
County	Harvested Acreage	Yield Per Acre	Production	Price Per	Total Value
				Dollars	
Horticulture, All ¹					
Alameda	116				5,768,000
Amador					209,000
Butte	275				18,012,000
Calaveras					438,000
Contra Costa	16				10,472,000
El Dorado	48				2,426,000
Fresno					50,213,000
Glenn					2,453,000
Humboldt	200				57,610,000
Imperial					6,233,000
Inyo	221				4,434,000
Kern	2,180				141,298,000
Lake	16				624,000
Madera	230				20,330,000
Marin	6				270,000
Mariposa					73,600
Mendocino	19				1,821,000
Modoc					168,000
Mono	1				22,100
Monterey	693				124,314,000
Napa					121,000
Nevada	16				689,000
Orange	469				42,989,000
Placer					9,350,000
Plumas	3				37,000
Riverside	6,430				318,632,000
Sacramento	241				22,802,000
San Benito	85				4,252,000
San Bernardino	910				43,396,000
San Diego	11,300				1,219,074,000
San Joaquin					141,197,000
San Luis Obispo	277				98,041,000
San Mateo	492				55,103,000
Santa Barbara	917				131,021,000
Santa Clara	1,090				114,993,000
Santa Cruz	817				127,962,000
Shasta					5,269,000
Siskiyou	2,460				158,208,000
Solano	1,340				43,698,000
Sonoma					68,975,000
Stanislaus	1,990				242,995,000
Sutter	350				27,892,000
Tehama					14,748,000
Tulare					114,650,000
Tuolumne					102,000
Ventura	3,690				224,989,000
Yolo	405				23,169,000
Yuba	71				5,586,000
Sum of Others	3,550				238,140,000
State Total	40,924				3,945,268,700

¹ Includes Christmas Trees, Cultivated; Horticulture, Bedding Plants, Misc; Horticulture, Bedding Plants, Strawberry; Horticulture, Bedding Plants, Vegetables; Horticulture, Cacti & Succulents; Horticulture, Cut Flowers and Cut Foliage; Horticulture, Fruit/Vine/Nut Plants; Horticulture, Groundcover; Horticulture, Herbaceous Perennials; Horticulture, Misc; Horticulture, Palms; Horticulture, Potted Foliage & Flowering Plants; Horticulture, Propagative Material; Horticulture, Sod/Turf; Horticulture, Woody Ornamentals.

Commodity Data, 2022					
County	Harvested Acreage	Yield Per Acre	Production	Price Per	Total Value
				Dollars	
Horticulture, Bedding Plants, Misc					
Plumas	3				37,000
San Bernardino	4				250,000
San Joaquin					938,000
San Mateo	8				6,634,000
Santa Clara	106				26,006,000
Sonoma					7,378,000
Sum of Others	18				5,273,000
State Total	139				46,516,000
Horticulture, Bedding Plants, Strawberry					
Siskiyou	2,460				142,806,000
Sum of Others	702				17,153,000
State Total	3,162				159,959,000
Horticulture, Bedding Plants, Vegetables					
Monterey	234				51,585,000
San Bernardino	1				79,600
San Joaquin					9,572,000
San Luis Obispo	64				35,372,000
Ventura	143				12,424,000
Yuba	71				5,586,000
Sum of Others	12				3,705,000
State Total	525				118,323,600
Horticulture, Cacti & Succulents					
Orange	20				3,116,000
San Diego	969				
Sum of Others	5				145,000
State Total	994				3,261,000
Horticulture, Cut Flowers and Cut Foliage					
Humboldt	150				51,101,000
Monterey	150				8,318,000
Nevada	8				281,000
Riverside	4				102,000
San Diego	2,570				48,616,000
San Luis Obispo	83				19,490,000
San Mateo	200				5,364,000
Santa Barbara	696				35,703,000
Santa Cruz	275				23,758,000
Sonoma					6,974,000
Ventura	552				31,439,000
Sum of Others	27				251,000
State Total	4,715				231,397,000

Commodity Data, 2022					
County	Harvested Acreage	Yield Per Acre	Production	Price Per	Total Value
				Dollars	
Horticulture, Fruit/Vine/Nut Plants					
Kern	940				107,950,000
San Diego	216				22,352,000
San Joaquin					14,076,000
Siskiyou					8,180,000
Solano	130				4,790,000
Stanislaus	1,150				175,035,000
Sutter	350				27,892,000
Tulare					36,656,000
Ventura	256				27,487,000
Yolo	324				16,202,000
State Total	3,366				440,620,000
Horticulture, Groundcover					
San Bernardino	31				7,076,000
Sum of Others	15				3,091,000
State Total	46				10,167,000
Horticulture, Herbaceous Perennials					
Fresno					4,397,000
Kern					27,000
San Bernardino	9				507,000
Santa Clara	71				15,816,000
Ventura	101				12,643,000
Sum of Others	26				2,912,000
State Total	207				36,302,000



Commodity Data, 2022					
County	Harvested Acreage	Yield Per Acre	Production	Price Per	Total Value
				Dollars	
Horticulture, Misc					
Alameda	62				909,000
Amador					209,000
Butte	275				18,012,000
Calaveras					438,000
Contra Costa	16				10,472,000
El Dorado	48				2,426,000
Fresno					30,890,000
Glenn					2,453,000
Humboldt	50				6,509,000
Imperial					6,233,000
Inyo	221				4,434,000
Lake	16				624,000
Madera	230				20,330,000
Marin	6				270,000
Mariposa					73,600
Mendocino	19				1,805,000
Modoc					168,000
Mono	1				22,100
Monterey	309				64,411,000
Napa					121,000
Nevada	8				321,000
Placer					9,350,000
Riverside	150				2,330,000
Sacramento	241				22,802,000
San Benito	85				4,252,000
San Bernardino	228				8,254,000
San Diego	1,970				462,457,000
San Joaquin					40,934,000
San Luis Obispo	76				36,212,000
San Mateo	77				12,503,000
Santa Barbara	221				95,318,000
Santa Clara	269				27,078,000
Santa Cruz	542				104,204,000
Shasta					5,200,000
Siskiyou					7,000,000
Solano	1,210				38,908,000
Sonoma					25,830,000
Stanislaus	292				25,198,000
Tehama					14,748,000
Tulare					8,334,000
Tuolumne					102,000
Ventura	834				46,684,000
Yolo	81				6,967,000
Sum of Others	1,670				107,109,000
State Total	9,207				1,282,904,700
Horticulture, Palms					
Orange	9				4,683,000
San Bernardino	40				3,466,000
State Total	49				8,149,000

Commodity Data, 2022

County	Harvested Acreage	Yield Per Acre	Production	Price Per	Total Value
				Dollars	

Horticulture, Potted Foliage & Flowering Plants

San Bernardino	35				12,906,000
San Diego	870				310,568,000
San Joaquin					18,517,000
San Mateo	45				30,227,000
Ventura	92				18,001,000
Sum of Others	11				5,656,000
State Total	1,053				395,875,000

Horticulture, Propagative Material

Kern					5,885,000
Ventura	17				3,846,000
State Total	17				9,731,000

Horticulture, Sod/Turf

Kern	235				5,843,000
Riverside	2,300				34,700,000
Sum of Others	556				10,605,000
State Total	3,091				51,148,000

Horticulture, Woody Ornamentals

Alameda	54				4,859,000
Fresno					14,926,000
Kern	1,010				21,593,000
Orange	391				33,312,000
Riverside	3,980				281,500,000
San Diego	4,660				375,080,000
San Joaquin					57,160,000
San Luis Obispo	54				6,967,000
Santa Clara	375				45,784,000
Sonoma					28,652,000
Stanislaus	542				42,762,000
Tulare					69,660,000
Ventura	1,690				72,465,000
Sum of Others	1,100				94,304,000
State Total	13,856				1,149,024,000

Jujubes

		<i>Tons/Acre</i>	<i>Tons</i>		
San Bernardino	85	2.45	208	4,923.08	1,024,000
Sum of Others	181				655,000
State Total	266	2.45	208	4,923.08	1,679,000

Kale

		<i>Tons/Acre</i>	<i>Tons</i>		
Monterey	1,390	7.09	9,860	1,279.31	12,614,000
Riverside	330	5.54	1,830	1,400.00	2,562,000
San Benito	920	7.10	6,530	1,200.31	7,838,000
Ventura	886	5.38	4,770	1,639.62	7,821,000
Sum of Others	3,070				20,922,000
State Total	6,596	6.52	22,990	1,341.23	51,757,000

Commodity Data, 2022					
County	Harvested Acreage	Yield Per Acre	Production	Price Per	Total Value
				Dollars	
Kiwifruit					
		<i>Tons/Acre</i>	<i>Tons</i>		
Butte	499	3.91	1,950	1,541.03	3,005,000
Tulare	1,880	2.74	5,150	1,320.00	6,798,000
Yuba	948	3.46	3,280	3,792.99	12,441,000
Sum of Others	1,290				13,022,000
State Total	4,617	3.12	10,380	2,142.97	35,266,000
Kohlrabi					
Sum of Others	79				4,083,000
State Total	79				4,083,000
Kumquats					
		<i>Tons/Acre</i>	<i>Tons</i>		
San Diego	50	3.86	193	3,725.39	719,000
Sum of Others	3				129,000
State Total	53	3.86	193	3,725.39	848,000
Leeks					
		<i>Tons/Acre</i>	<i>Tons</i>		
Monterey	396	12.07	4,780	1,560.04	7,457,000
San Mateo	41	13.15	539	1,185.53	639,000
Sum of Others	344				5,142,000
State Total	781	12.17	5,319	1,522.09	13,238,000
Lemons					
		<i>Tons/Acre</i>	<i>Tons</i>		
Fresno	5,340	14.85	79,300	529.00	41,950,000
Imperial	4,920	12.52	61,600	628.94	38,743,000
Kern	5,380	21.56	116,000	1,068.69	123,968,000
Monterey	2,030	29.11	59,100	689.68	40,760,000
Riverside	7,800	9.20	71,800	959.47	68,890,000
San Bernardino	770	9.51	7,320	559.70	4,097,000
San Diego	2,990	17.56	52,500	1,408.04	73,922,000
San Luis Obispo	2,260	10.84	24,500	602.16	14,753,000
Santa Barbara	1,620	19.57	31,700	413.15	13,097,000
Tulare	13,300	17.97	239,000	689.00	164,671,000
Ventura	20,000	18.70	374,000	552.33	206,573,000
Sum of Others	380				2,029,000
State Total	66,790	16.82	1,116,820	708.64	793,453,000



Commodity Data, 2022					
County	Harvested Acreage	Yield Per Acre	Production	Price Per	Total Value
				Dollars	
Lettuce, All ¹		Tons/Acre	Tons		
Imperial	32,200	17.30	557,000	729.36	406,252,000
Monterey	103,000	15.92	1,640,000	844.44	1,384,879,000
Riverside	3,880	3.25	12,600	2,860.48	36,042,000
San Benito	10,200	6.41	65,400	795.31	52,013,000
San Bernardino	16				762,000
San Luis Obispo	4,950	14.71	72,800	781.80	56,915,000
Santa Barbara	12,000	16.50	198,000	911.27	180,432,000
Santa Clara	2,020	11.04	22,300	920.67	20,531,000
Santa Cruz	3,120	18.62	58,100	444.61	25,832,000
Stanislaus	190				4,833,000
Ventura	1,670	18.20	30,400	820.89	24,955,000
Sum of Others	8,840				104,366,000
State Total	182,086	15.35	2,656,600	823.55	2,297,812,000
¹ Includes Lettuce, Head; Lettuce, Leaf; Lettuce, Misc; Lettuce, Romaine.					
Lettuce, Head		Tons/Acre	Tons		
Fresno	3,140	22.17	69,600	973.53	67,758,000
Imperial	15,100	19.60	296,000	731.54	216,536,000
Monterey	41,500	21.42	889,000	615.06	546,786,000
Riverside	2,980				28,608,000
San Benito	1,060	14.43	15,300	335.36	5,131,000
San Luis Obispo	3,660	15.93	58,300	658.92	38,415,000
Santa Barbara	7,110	17.44	124,000	763.24	94,642,000
Santa Cruz	1,430	22.03	31,500	427.68	13,472,000
Sum of Others	240				1,395,000
State Total	76,220	20.32	1,483,700	662.36	1,012,743,000
Lettuce, Leaf		Tons/Acre	Tons		
Imperial	9,540	13.31	127,000	1,111.10	141,110,000
Monterey	8,650	15.61	135,000	1,044.73	141,038,000
San Luis Obispo	1,300	11.15	14,500	1,275.86	18,500,000
Santa Barbara	4,920	15.08	74,200	1,156.20	85,790,000
Santa Cruz	1,690	15.74	26,600	464.66	12,360,000
Ventura	383	25.77	9,870	1,458.66	14,397,000
Sum of Others	5,110				33,685,000
State Total	31,593	14.62	387,170	1,067.22	446,880,000
Lettuce, Misc		Tons/Acre	tons		
San Benito	5,640				22,450,000
San Bernardino	16				762,000
Santa Clara	2,020	11.04	22,300	920.67	20,531,000
Stanislaus					2,198,000
Sum of Others	40				125,000
State Total	7,716	11.04	22,300	920.67	46,066,000

Commodity Data, 2022					
County	Harvested Acreage	Yield Per Acre	Production	Price Per	Total Value
				Dollars	
Lettuce, Romaine					
		<i>Tons/Acre</i>	<i>Tons</i>		
Imperial	7,490	17.89	134,000	362.73	48,606,000
Monterey	53,000	11.60	615,000	1,133.42	697,055,000
Riverside	900	14.00	12,600	590.00	7,434,000
San Benito	3,530	14.22	50,200	486.69	24,432,000
Ventura	1,290	15.89	20,500	515.02	10,558,000
Sum of Others	497				4,037,000
State Total	66,707	12.57	832,300	946.88	792,122,000
Limes					
		<i>Tons/Acre</i>	<i>Tons</i>		
San Diego	192	3.79	728	1,916.21	1,395,000
Sum of Others	60				964,000
State Total	252	3.79	728	1,916.21	2,359,000
Livestock Products, Misc					
Amador					52,100
Calaveras					10,700
Lassen					129,000
Mariposa					21,700
Mendocino					1,368,000
Monterey					28,025,000
Napa					576,000
Placer					1,550,000
Riverside					1,750,000
Sacramento					665,000
San Benito					3,375,000
San Mateo					956,000
Solano					28,308,000
Sonoma					39,397,000
Sutter					5,000
Tulare					1,360,000
Tuolumne					263,000
Sum of Others					485,000
State Total					108,296,500



Commodity Data, 2022					
County	Harvested Acreage	Yield Per Acre	Production	Price Per	Total Value
				Dollars	
Livestock, Misc ¹					
Alameda					608,000
Amador					442,000
Butte					1,950,000
Calaveras					50,700
Colusa					1,800,000
Contra Costa					1,573,000
El Dorado					3,379,000
Imperial					120,816,000
Inyo					108,000
Kern					515,000
Kings					667,000
Lake					762,000
Lassen					64,000
Mariposa					187,000
Mendocino					469,000
Mono					1,583,000
Napa					13,000
Nevada					1,123,000
Placer					6,096,000
Sacramento					787,000
San Joaquin					6,318,000
San Luis Obispo					3,017,000
Santa Barbara					9,779,000
Santa Clara					149,000
Shasta					4,999,000
Siskiyou					288,000
Solano					1,166,000
Sonoma					9,023,000
Tulare					10,657,000
Tuolumne					10,626,000
Ventura					6,706,000
Yolo					3,234,000
Yuba					22,577,000
Sum of Others					7,219,000
State Total					238,750,700

¹ If a county combines their livestock and poultry categories, that total is included here

Manure	Tons		
Fresno	1,733,000	7.84	13,587,000
Kern	619,000	9.69	6,000,000
Kings	856,000	4.90	4,196,000
Merced	1,433,000	11.59	16,614,000
San Joaquin	227,000	4.03	915,000
Stanislaus	622,000	12.51	7,778,000
Tulare	2,879,000	8.29	23,867,000
Sum of Others			1,136,000
State Total	8,369,000	8.72	74,093,000

Commodity Data, 2022					
County	Harvested Acreage	Yield Per Acre	Production	Price Per	Total Value
				Dollars	
Melons, Cantaloupe		<i>Tons/Acre</i>	<i>Tons</i>		
Fresno	6,970	16.64	116,000	508.00	58,928,000
Imperial	3,210	16.76	53,800	445.28	23,956,000
Merced	2,550	17.92	45,700	616.89	28,192,000
Riverside	825	16.48	13,600	280.22	3,811,000
Sum of Others	1,300				10,649,000
State Total	14,855	16.90	229,100	501.47	125,536,000
Melons, Honeydew		<i>Tons/Acre</i>	<i>Tons</i>		
Fresno	3,100	18.90	58,600	661.01	38,735,000
Riverside	400	16.50	6,600	500.00	3,300,000
Sum of Others	1,850				15,032,000
State Total	5,350	18.63	65,200	644.71	57,067,000
Melons, Misc		<i>Tons/Acre</i>	<i>tons</i>		
Fresno	2,520	13.73	34,600	655.00	22,663,000
Imperial	1,210	18.18	22,000	391.32	8,609,000
Riverside	930	16.02	14,900	299.60	4,464,000
San Joaquin	744	28.76	21,400	90.05	1,927,000
Sum of Others	1,170				11,786,000
State Total	6,574	17.19	92,900	405.41	49,449,000
Melons, Watermelon		<i>Tons/Acre</i>	<i>Tons</i>		
Fresno	1,930	27.15	52,400	280.99	14,724,000
Kern	1,530	36.01	55,100	413.85	22,803,000
Riverside	900	16.00	14,400	230.00	3,312,000
San Bernardino	37	26.35	975	476.92	465,000
San Joaquin	2,030	39.46	80,100	427.19	34,218,000
Sum of Others	1,540				17,665,000
State Total	7,967	31.58	202,975	372.08	93,187,000



Commodity Data, 2022

County	Harvested Acreage	Yield Per Acre	Production	Price Per	Total Value
				Dollars	
Milk, Cow's, All ¹					
Butte					1,262,000
Fresno					655,138,000
Glenn					94,512,000
Humboldt					61,978,000
Kern					947,492,000
Kings					993,614,000
Madera					454,727,000
Marin					34,064,000
Merced					1,500,840,000
Riverside					177,450,000
Sacramento					91,344,000
San Bernardino					125,994,000
San Joaquin					626,472,000
Siskiyou					3,380,000
Sonoma					67,366,000
Stanislaus					1,125,516,000
Tehama					15,467,000
Tulare					2,671,291,000
Sum of Others					26,599,000
State Total					9,674,506,000

¹ Includes Milk, Cow's, Fluid; Milk, Cow's, Manufacturing; Milk, Cow's, Misc.

Milk, Cow's, Fluid	Cwt		
San Bernardino			121,484,000
Siskiyou	200,000	16.90	3,380,000
Tehama			15,467,000
Sum of Others			10,351,000
State Total	200,000	16.90	150,682,000

Milk, Cow's, Manufacturing	
San Bernardino	4,510,000
State Total	4,510,000

Commodity Data, 2022					
County	Harvested Acreage	Yield Per Acre	Production	Price Per	Total Value
				Dollars	
Milk, Cow's, Misc			Cwt		
Butte					1,262,000
Fresno			24,977,000	26.23	655,138,000
Glenn			3,580,000	26.40	94,512,000
Humboldt			2,330,000	26.60	61,978,000
Kern			35,620,000	26.60	947,492,000
Kings			37,780,000	26.30	993,614,000
Madera			17,290,000	26.30	454,727,000
Marin			1,185,000	28.75	34,064,000
Merced			56,850,000	26.40	1,500,840,000
Riverside			9,100,000	19.50	177,450,000
Sacramento			3,460,000	26.40	91,344,000
San Joaquin			23,730,000	26.40	626,472,000
Sonoma			1,972,000	34.16	67,366,000
Stanislaus			42,633,000	26.40	1,125,516,000
Tulare			101,570,000	26.30	2,671,291,000
Sum of Others					16,248,000
State Total			362,077,000	26.24	9,519,314,000
Milk, Goat's			Cwt		
Kings			133,000	47.01	6,252,000
Merced			56,400	57.47	3,241,000
Plumas			53	43.02	2,280
Sum of Others					6,468,000
State Total			189,453	50.12	15,963,280
Mint			Tons/Acre	Tons	
Modoc	1,500	0.04	64	49,812.50	3,188,000
Siskiyou	265	0.04	11	45,090.91	496,000
State Total	1,765	0.04	75	49,120.00	3,684,000
Mushrooms			Tons/Acre	Tons	
Monterey	99	163.64	16,200	5,665.99	91,789,000
Santa Clara	130	127.69	16,600	5,220.12	86,654,000
Sum of Others	4				296,000
State Total	233	143.23	32,800	5,440.34	178,739,000
Nectarines			Tons/Acre	Tons	
Fresno	11,000	9.27	102,000	2,106.00	214,812,000
Kings	1,170	7.92	9,260	1,709.61	15,831,000
Siskiyou	1				15,000
Tulare	8,720	10.30	89,800	1,750.00	157,150,000
Sum of Others	389				6,530,000
State Total	21,280	9.62	201,060	1,928.74	394,338,000

Commodity Data, 2022					
County	Harvested Acreage	Yield Per Acre	Production	Price Per	Total Value
				Dollars	
Oats, All ¹					
Glenn	3,990				2,463,000
Kings	2,160				564,000
Madera	2,900				2,231,000
Monterey	513				150,000
Riverside	1,780				1,098,000
Sacramento	3,890				2,236,000
Siskiyou	671				391,000
Sonoma	500				204,000
Stanislaus	33,000				33,658,000
Sum of Others	7,080				3,858,000
State Total	56,484				46,853,000
¹ Includes Oats, Grain; Oats, Hay; Oats, Misc Uses; Oats, Silage.					
Oats, Grain					
		<i>Tons/Acre</i>	<i>Tons</i>		
Riverside	850	3.00	2,550	200.00	510,000
Siskiyou	671	2.74	1,840	212.50	391,000
Sonoma	500	1.22	611	333.88	204,000
Sum of Others	1,870				658,000
State Total	3,891	2.48	5,001	220.96	1,763,000
Oats, Hay					
		<i>Tons/Acre</i>	<i>Tons</i>		
Glenn	3,990	3.26	13,000	189.46	2,463,000
Kings	2,110	2.59	5,470	96.89	530,000
Madera	2,900	3.09	8,960	249.00	2,231,000
Riverside	400	6.00	2,400	200.00	480,000
Sacramento	1,260	1.91	2,400	180.42	433,000
Stanislaus	23,400	4.06	95,000	256.40	24,358,000
Sum of Others	4,030				2,558,000
State Total	38,090	3.73	127,230	239.68	33,053,000
Oats, Misc Uses					
		<i>Tons/Acre</i>	<i>Tons</i>		
Monterey	513	1.39	713	210.38	150,000
State Total	513	1.39	713	210.38	150,000
Oats, Silage					
		<i>Tons/Acre</i>	<i>Tons</i>		
Kings	52	10.25	533	63.79	34,000
Riverside	533	4.32	2,300	46.96	108,000
Sacramento	2,630	14.68	38,600	46.71	1,803,000
Stanislaus	9,560	15.80	151,000	61.59	9,300,000
Sum of Others	1,180				641,000
State Total	13,955	15.06	192,433	58.44	11,886,000
Okra					
		<i>Tons/Acre</i>	<i>Tons</i>		
Riverside	1,100	7.60	8,360	980.02	8,193,000
Sum of Others	504				478,000
State Total	1,604	7.60	8,360	980.02	8,671,000

Commodity Data, 2022					
County	Harvested Acreage	Yield Per Acre	Production	Price Per	Total Value
				Dollars	
Olives		Tons/Acre	Tons		
Butte	758	2.51	1,900	723.16	1,374,000
Calaveras	50	0.98	49	626.53	30,700
Colusa	269	3.00	807	722.43	583,000
Contra Costa	238	4.79	1,140	1,051.75	1,199,000
El Dorado	102				36,700
Glenn	8,800	1.96	17,200	910.52	15,661,000
Lake	106	0.39	41	1,617.07	66,300
Madera	500	2.80	1,400	941.43	1,318,000
Mendocino	123				
Merced	548				
Napa	109	1.52	166	1,704.82	283,000
Placer	64				105,000
San Benito	198	1.30	257	852.14	219,000
San Joaquin	5,090	2.38	12,100	848.51	10,267,000
Solano	97	0.45	44	3,022.73	133,000
Sonoma	259				320,000
Stanislaus	1,270	3.88	4,930	885.80	4,367,000
Sutter	656	0.25	164	628.05	103,000
Tehama	7,660	1.95	14,900	918.05	13,679,000
Tulare	7,150	2.04	14,600	925.00	13,505,000
Yolo	6,100	3.61	22,000	669.00	14,718,000
Sum of Others	3,520				11,291,000
State Total	43,667	2.35	91,698	845.23	89,258,700
Onions, Dry		Tons/Acre	Tons		
Fresno	10,800	20.65	223,000	347.00	77,381,000
Imperial	18,000	20.56	370,000	222.19	82,210,000
Kern	5,200	35.96	187,000	462.81	86,545,000
Modoc	1,480	17.84	26,400	256.17	6,763,000
Monterey	1,720	39.13	67,300	511.63	34,433,000
Riverside	4,090	21.00	85,900	129.99	11,166,000
San Bernardino	12	19.75	237	881.86	209,000
San Joaquin	2,260	20.31	45,900	202.20	9,281,000
Santa Clara	23	18.22	419	589.50	247,000
Siskiyou	2,650	28.75	76,200	174.97	13,333,000
Sum of Others	2,620				19,510,000
State Total	48,855	23.41	1,082,356	297.10	341,078,000
Oranges, All ¹		Tons/Acre	Tons		
Fresno	52,600	12.83	675,000	550.84	371,818,000
Kern	67,100	15.81	1,061,000	1,060.78	1,125,486,000
Madera	4,200	11.60	48,700	552.73	26,918,000
Riverside	4,340	12.40	53,800	423.14	22,765,000
San Bernardino	2,430	11.89	28,900	366.40	10,589,000
San Diego	7,460	15.68	117,000	653.06	76,408,000
Tulare	170,000	15.33	2,606,000	1,004.43	2,617,534,000
Ventura	5,810	14.61	84,900	725.23	61,572,000
Sum of Others	285				1,073,000
State Total	314,225	14.89	4,675,300	922.53	4,314,163,000

¹ Includes Oranges, Misc; Oranges, Navel; Oranges, Valencia.

Commodity Data, 2022					
County	Harvested Acreage	Yield Per Acre	Production	Price Per	Total Value
				Dollars	
Oranges, Misc			Tons/Acre		Tons
Madera	2,100	11.57	24,300	553.87	13,459,000
San Diego	3,730	15.74	58,700	650.84	38,204,000
Sum of Others	88				144,000
State Total	5,918	14.24	83,000	622.45	51,807,000
Oranges, Navel			Tons/Acre		Tons
Fresno	24,500	12.90	316,000	554.35	175,176,000
Kern	29,000	16.00	464,000	1,051.73	488,001,000
Riverside	1,300	14.00	18,200	395.00	7,189,000
San Bernardino	799	13.27	10,600	381.04	4,039,000
Tulare	71,900	15.86	1,140,000	1,040.76	1,186,464,000
Ventura	398	15.88	6,320	667.72	4,220,000
Sum of Others	47				371,000
State Total	127,944	15.29	1,955,120	953.95	1,865,460,000
Oranges, Valencia			Tons/Acre		Tons
Fresno	1,820	11.59	21,100	508.67	10,733,000
Kern	4,550	14.62	66,500	1,123.94	74,742,000
Riverside	870	10.00	8,700	481.95	4,193,000
San Bernardino	414	9.18	3,800	330.53	1,256,000
Tulare	13,000	12.54	163,000	750.32	122,303,000
Ventura	2,510	14.42	36,200	733.87	26,566,000
Sum of Others	8				21,300
State Total	23,172	12.92	299,300	801.18	239,814,300
Parsley			Tons/Acre		Tons
Monterey	220	20.91	4,600	1,279.35	5,885,000
Ventura	1,180	29.24	34,500	642.32	22,160,000
Sum of Others	2,030				43,789,000
State Total	3,430	27.93	39,100	717.26	71,834,000



Commodity Data, 2022					
County	Harvested Acreage	Yield Per Acre	Production	Price Per	Total Value
				Dollars	
Pasture, All ¹					
Alameda	135,000				3,150,000
Alpine	136,000				4,947,000
Amador	159,000				3,418,000
Butte	201,000				4,500,000
Calaveras	99,700				1,883,000
Colusa	171,000				4,110,000
Contra Costa	153,000				4,754,000
El Dorado	235,000				7,818,000
Glenn	211,000				4,687,000
Imperial					1,544,000
Inyo	1,164,000				2,170,000
Kern	1,434,000				37,844,000
Kings	358,000				6,618,000
Lake	90,000				1,170,000
Lassen	1,356,000				5,966,000
Marin	154,000				7,392,000
Mariposa	399,000				7,375,000
Mendocino	721,000				11,748,000
Merced	561,000				18,837,000
Modoc	560,000				11,841,000
Mono	1,098,000				2,992,000
Monterey	1,188,000				23,166,000
Napa	50,000				205,000
Nevada	105,000				3,700,000
Placer	146,000				3,800,000
Plumas	113,000				5,057,000
Riverside	11,500				203,000
Sacramento	148,000				4,434,000
San Benito	504,000				17,438,000
San Diego	175,000				2,497,000
San Joaquin	134,000				9,388,000
San Luis Obispo	1,012,000				8,096,000
San Mateo	26,400				821,000
Santa Barbara	569,000				8,189,000
Santa Clara	254,000				3,301,000
Shasta					7,600,000
Sierra	64,500				2,852,000
Siskiyou	681,000				13,156,000
Solano	206,000				9,105,000
Sonoma	311,000				6,974,000
Stanislaus	422,000				21,038,000
Tehama	936,000				14,010,000
Tulare	780,000				58,528,000
Tuolumne	673,000				3,313,000
Ventura	198,000				403,000
Yolo	39,300				2,072,000
Yuba	196,000				5,689,000
Sum of Others	2,665,000				33,565,000
State Total	21,003,400				423,364,000

¹ Includes Pasture, Irrigated; Pasture, Misc; Pasture, Range.

Commodity Data, 2022					
County	Harvested Acreage	Yield Per Acre	Production	Price Per	Total Value
				Dollars	
Pasture, Irrigated					
Alpine	3,000				696,000
Amador	2,350				282,000
Butte	11,000				1,650,000
Calaveras	1,480				312,000
Colusa	1,200				210,000
Contra Costa	5,450				1,646,000
El Dorado	1,580				364,000
Glenn	7,810				2,148,000
Inyo	13,500				891,000
Kern	5,500				1,100,000
Lassen	23,000				4,830,000
Mendocino	3,200				979,000
Merced	10,100				2,027,000
Modoc	60,000				10,000,000
Mono	19,600				1,450,000
Nevada	10,000				1,800,000
Placer	18,000				2,520,000
Plumas	17,500				3,154,000
Riverside	1,520				190,000
San Bernardino	347				723,000
San Diego	700				1,458,000
San Joaquin	14,500				3,988,000
San Mateo	316				66,000
Santa Barbara	2,420				530,000
Shasta					3,220,000
Sierra	9,770				1,758,000
Siskiyou	87,500				7,225,000
Solano	17,500				3,016,000
Sonoma	5,440				268,000
Stanislaus	23,100				7,271,000
Tehama	17,500				4,194,000
Tulare	112,000				33,264,000
Tuolumne	1,000				207,000
Yolo	7,440				1,116,000
Yuba	8,740				1,573,000
Sum of Others	19,700				4,324,000
State Total	543,763				110,450,000
Pasture, Misc					
Imperial					1,544,000
Kern					1,973,000
Lassen	42,000				962,000
Mendocino	363,000				6,850,000
Shasta					1,400,000
Tehama	5,260				46,000
Tulare	53,500				2,140,000
Sum of Others	2,710				1,221,000
State Total	466,470				16,136,000

Commodity Data, 2022					
County	Harvested Acreage	Yield Per Acre	Production	Price Per	Total Value
				Dollars	
Pasture, Range					
Alameda	135,000				3,150,000
Alpine	133,000				4,251,000
Amador	157,000				3,136,000
Butte	190,000				2,850,000
Calaveras	98,200				1,571,000
Colusa	170,000				3,900,000
Contra Costa	148,000				3,108,000
El Dorado	233,000				7,455,000
Glenn	203,000				2,539,000
Inyo	1,150,000				1,279,000
Kern	1,429,000				34,771,000
Kings	358,000				6,618,000
Lake	90,000				1,170,000
Lassen	1,291,000				174,000
Madera	380,000				10,640,000
Marin	154,000				7,392,000
Mariposa	399,000				7,375,000
Mendocino	355,000				3,919,000
Merced	551,000				16,810,000
Modoc	500,000				1,841,000
Mono	1,078,000				1,542,000
Monterey	1,188,000				23,166,000
Napa	50,000				205,000
Nevada	95,000				1,900,000
Placer	128,000				1,280,000
Plumas	95,100				1,903,000
Riverside	10,000				13,000
Sacramento	148,000				4,434,000
San Benito	504,000				17,438,000
San Bernardino	1,349,000				1,349,000
San Diego	174,000				1,039,000
San Joaquin	120,000				5,400,000
San Luis Obispo	1,012,000				8,096,000
San Mateo	26,000				755,000
Santa Barbara	567,000				7,659,000
Santa Clara	254,000				3,301,000
Shasta					2,980,000
Sierra	54,700				1,094,000
Siskiyou	594,000				5,931,000
Solano	188,000				6,089,000
Sonoma	306,000				6,706,000
Stanislaus	399,000				13,767,000
Tehama	913,000				9,770,000
Tulare	615,000				23,124,000
Tuolumne	672,000				3,106,000
Ventura	198,000				403,000
Yolo	31,900				956,000
Yuba	187,000				4,116,000
Sum of Others	913,000				15,308,000
State Total	19,993,900				296,779,000

Commodity Data, 2022					
County	Harvested Acreage	Yield Per Acre	Production	Price Per	Total Value
				Dollars	
Peaches, All ¹		Tons/Acre	Tons		
Butte	2,220	13.02	28,900	567.20	16,392,000
Contra Costa	242	3.86	934	3,059.96	2,858,000
El Dorado	220	2.29	504	4,236.11	2,135,000
Fresno	34,600	11.39	394,000	1,769.10	697,024,000
Kings	4,470	13.18	58,900	1,065.67	62,768,000
Placer	189	1.20	226	2,008.85	454,000
Riverside	800	8.50	6,800	290.00	1,972,000
San Joaquin	3,170	18.36	58,200	589.48	34,308,000
Siskiyou	10				168,000
Stanislaus	7,170				86,948,000
Tulare	23,400	11.50	269,000	859.96	231,328,000
Yuba	3,880	9.95	38,600	604.35	23,328,000
Sum of Others	22,200				185,979,000
State Total	102,571	11.70	856,064	1,252.90	1,345,662,000
¹ Includes Peaches, Clingstone; Peaches, Freestone; Peaches, Misc.					
Peaches, Clingstone		Tons/Acre	Tons		
Fresno	1,720	12.91	22,200	603.02	13,387,000
Kings	785	17.83	14,000	611.57	8,562,000
San Joaquin	1,030	17.28	17,800	612.02	10,894,000
Sutter	7,090	12.16	86,200	561.78	48,425,000
Tulare	994	13.58	13,500	829.04	11,192,000
Yuba	1,940	9.95	19,300	604.35	11,664,000
Sum of Others	1,660				17,323,000
State Total	15,219	12.76	173,000	601.87	121,447,000
Peaches, Freestone		Tons/Acre	Tons		
Fresno	15,600	11.22	175,000	1,915.00	335,125,000
Kings	1,450	10.62	15,400	1,481.95	22,822,000
Merced	1,650	14.18	23,400	565.08	13,223,000
San Joaquin	553	20.43	11,300	553.98	6,260,000
Tulare	10,700	11.31	121,000	863.40	104,472,000
Sum of Others	186				2,769,000
State Total	30,139	11.55	346,100	1,392.38	484,671,000
Peaches, Misc		Tons/Acre	Tons		
Butte	1,110	12.97	14,400	569.17	8,196,000
Contra Costa	121	3.86	467	3,059.96	1,429,000
El Dorado	110	2.29	252	4,234.13	1,067,000
Placer	94	1.20	113	2,008.85	227,000
Riverside	400	8.50	3,400	290.00	986,000
Siskiyou	5				84,000
Stanislaus	3,590				43,474,000
Sum of Others	524				11,250,000
State Total	5,954	10.15	18,632	638.95	66,713,000

Commodity Data, 2022					
County	Harvested Acreage	Yield Per Acre	Production	Price Per	Total Value
				Dollars	
Pears, All ¹		Tons/Acre	Tons		
El Dorado	210	2.30	482	3,713.69	1,790,000
Fresno	900	16.11	14,500	2,453.38	35,574,000
Lake	2,750	11.89	32,700	996.12	32,573,000
Mendocino	2,100	18.52	38,900	552.11	21,477,000
Placer	24	10.58	254	500.00	127,000
Sacramento	9,430	19.83	187,000	602.28	112,626,000
San Joaquin	122	14.92	1,820	575.82	1,048,000
Tulare	274	21.68	5,940	1,150.17	6,832,000
Sum of Others	412				2,219,000
State Total	16,222	17.81	281,596	753.02	214,266,000
¹ Includes Pears, Asian; Pears, Bartlett; Pears, Misc.					
Pears, Asian		Tons/Acre	Tons		
El Dorado	40	2.60	104	3,798.08	395,000
Sum of Others	10				23,600
State Total	50	2.60	104	3,798.08	418,600
Pears, Bartlett		Tons/Acre	Tons		
El Dorado	65	2.11	137	3,649.64	500,000
Lake	1,300	12.23	15,900	986.48	15,685,000
Mendocino	941	19.34	18,200	525.44	9,563,000
Sum of Others	28				282,000
State Total	2,334	14.85	34,237	752.05	26,030,000
Pears, Misc		Tons/Acre	tons		
Fresno	450	16.13	7,260	2,450.00	17,787,000
Lake	72	6.07	437	1,375.29	601,000
Mendocino	107	11.03	1,180	996.61	1,176,000
Placer	12	10.58	127	500.79	63,600
Sacramento	4,720	19.79	93,400	602.92	56,313,000
San Joaquin	61	14.92	910	575.82	524,000
Tulare	137	21.68	2,970	1,150.17	3,416,000
Sum of Others	169				804,000
State Total	5,728	19.12	106,284	751.58	80,684,600
Peas, Green (Fresh)		Tons/Acre	Tons		
Monterey	3,260	5.34	17,400	1,940.92	33,772,000
San Mateo	107	1.05	112	3,580.36	401,000
Sum of Others	131				214,000
State Total	3,498	5.20	17,512	1,951.40	34,387,000
Pecans		Tons/Acre	Tons		
Glenn	692	1.04	720	3,681.94	2,651,000
Tulare	1,070	0.99	1,060	2,539.62	2,692,000
Sum of Others	2,050				5,599,000
State Total	3,812	1.01	1,780	3,001.68	10,942,000

Commodity Data, 2022					
County	Harvested Acreage	Yield Per Acre	Production	Price Per	Total Value
				Dollars	
Peppers, All ¹		Tons/Acre	Tons		
Monterey	297	17.00	5,050	396.83	2,004,000
Riverside	3,730	23.00	85,800	853.01	73,188,000
San Benito	1,320	31.89	42,100	405.80	17,084,000
San Joaquin	430	15.72	6,760	495.12	3,347,000
Santa Clara	1,200	34.08	40,900	497.09	20,331,000
Ventura	2,030	27.64	56,100	946.81	53,116,000
Sum of Others	2,720				53,018,000
State Total	11,727	26.28	236,710	714.25	222,088,000

¹ Includes Peppers, Bell; Peppers, Chili; Peppers, Misc.

Peppers, Bell		Tons/Acre	Tons		
Fresno	880	18.41	16,200	1,131.42	18,329,000
Kern	1,060	14.15	15,000	1,215.07	18,226,000
Riverside	3,600	22.36	80,500	849.58	68,391,000
San Bernardino	1	10.00	10	3,760.00	37,600
San Joaquin	430	15.72	6,760	495.12	3,347,000
Santa Clara	1,040	34.04	35,400	452.97	16,035,000
Sum of Others	582				12,466,000
State Total	7,593	21.95	153,870	808.25	136,831,600

Peppers, Chili		Tons/Acre	Tons		
Riverside	130	41.00	5,330	900.00	4,797,000
Sum of Others	178				3,914,000
State Total	308	41.00	5,330	900.00	8,711,000

Peppers, Misc		Tons/Acre	Tons		
Monterey	297	17.00	5,050	396.83	2,004,000
San Benito	1,320	31.89	42,100	405.80	17,084,000
Santa Clara	169	32.96	5,570	771.28	4,296,000
Ventura	2,030	27.64	56,100	946.81	53,116,000
Sum of Others	22				45,000
State Total	3,838	28.52	108,820	703.00	76,545,000

Persimmons		Tons/Acre	Tons		
Fresno	1,050	7.10	7,450	2,551.01	19,005,000
San Diego	111	3.12	346	2,485.55	860,000
Santa Clara	31	2.13	66	2,651.51	175,000
Tulare	864	8.30	7,170	764.99	5,485,000
Sum of Others	782				9,571,000
State Total	2,838	7.31	15,032	1,698.04	35,096,000

Commodity Data, 2022					
County	Harvested Acreage	Yield Per Acre	Production	Price Per	Total Value
				Dollars	
Pistachios					
		<i>Tons/Acre</i>	<i>Tons</i>		
Butte	859	2.15	1,850	4,472.97	8,275,000
Fresno	145,000	1.28	186,000	3,705.00	689,130,000
Glenn	2,590	1.54	3,990	3,995.99	15,944,000
Kern	158,000	0.92	146,000	4,445.96	649,110,000
Kings	43,500	1.30	56,500	4,049.29	228,785,000
Madera	54,300	1.01	54,800	4,158.27	227,873,000
Merced	17,200	1.06	18,300	4,219.07	77,209,000
San Bernardino	338	0.41	140	3,100.00	434,000
San Joaquin	1,130	2.80	3,160	4,260.44	13,463,000
Stanislaus	2,080	1.03	2,140	3,984.11	8,526,000
Tehama	737	1.53	1,130	4,181.42	4,725,000
Tulare	91,800	1.23	113,000	3,920.00	442,960,000
Yolo	5,580	1.15	6,420	4,300.00	27,606,000
Sum of Others	712				1,382,000
State Total	523,826	1.13	593,430	4,034.24	2,395,422,000
Plums					
		<i>Tons/Acre</i>	<i>Tons</i>		
Contra Costa	46	4.09	188	2,702.13	508,000
El Dorado	52	0.73	38	4,394.74	167,000
Fresno	10,100	7.03	71,000	2,064.00	146,544,000
Kings	1,910	9.32	17,800	3,103.65	55,245,000
Placer	13	1.15	15	1,806.67	27,100
Tulare	7,310	5.40	39,500	2,660.00	105,070,000
Sum of Others	183				2,082,000
State Total	19,614	6.62	128,541	2,392.71	309,643,100
Pome Fruits, All ¹					
El Dorado	936				6,139,000
Humboldt	35				153,000
Lake	1,380				16,286,000
Mendocino	1,260				10,902,000
Placer	60				141,000
Riverside	22				115,000
Sacramento	4,720				56,313,000
San Benito	366				2,782,000
San Bernardino	209				1,695,000
San Diego	142				244,000
San Joaquin	1,490				13,948,000
Siskiyou	26				38,000
Sonoma	2,070				3,221,000
Tulare	236				3,846,000
Sum of Others	3,480				35,401,000
State Total	16,432				151,224,000

¹ Includes Apples; Pears, Asian; Pears, Bartlett; Pears, Misc; Quince.

Commodity Data, 2022					
County	Harvested Acreage	Yield Per Acre	Production	Price Per	Total Value
				Dollars	
Pomegranates					
		<i>Tons/Acre</i>	<i>Tons</i>		
Fresno	4,600	2.41	11,100	2,031.98	22,555,000
Riverside	5	7.60	38	1,000.00	38,000
Tulare	2,390	8.87	21,200	1,150.00	24,380,000
Sum of Others	13,800				98,208,000
State Total	20,795	4.62	32,338	1,452.56	145,181,000
Potatoes					
		<i>Tons/Acre</i>	<i>Tons</i>		
Kern	10,400	29.52	307,000	627.29	192,577,000
Modoc	3,700	23.76	87,900	209.94	18,454,000
Riverside	550	17.00	9,350	250.05	2,338,000
San Joaquin	3,170	20.00	63,400	985.69	62,493,000
Siskiyou	3,520	22.87	80,500	178.70	14,385,000
Sum of Others	2,520				16,506,000
State Total	23,860	25.69	548,150	529.50	306,753,000
Poultry, Misc					
Calaveras					3,182,000
Fresno					539,595,000
Kings					36,454,000
Madera					26,842,000
Marin					23,382,000
Plumas					59,100
Riverside					1,280,000
Sacramento					32,527,000
Santa Barbara					1,814,000
Tulare					47,209,000
Ventura					1,888,000
Sum of Others					11,698,000
State Total					725,930,100
Prunes ¹					
		<i>Tons/Acre</i>	<i>Tons</i>		
Butte	6,950	2.50	17,400	1,998.28	34,770,000
Colusa	319	2.08	664	1,899.10	1,261,000
Fresno	1,320	1.92	2,530	2,409.09	6,095,000
Glenn	3,300	2.12	7,000	2,059.57	14,417,000
Madera	790	3.95	3,120	2,390.70	7,459,000
Merced	1,330	3.33	4,430	2,292.10	10,154,000
Solano	1,580	2.97	4,690	1,920.90	9,009,000
Sutter	13,300	1.90	25,300	1,878.18	47,518,000
Tehama	5,090	2.02	10,300	2,194.85	22,607,000
Tulare	1,270	2.00	2,540	2,200.00	5,588,000
Yolo	2,300	2.11	4,850	2,100.00	10,185,000
Yuba	6,920	2.01	13,900	2,028.92	28,202,000
Sum of Others	54				225,000
State Total	44,523	2.17	96,724	2,039.46	197,490,000

¹ Production is reported on a dry weight basis

Commodity Data, 2022					
County	Harvested Acreage	Yield Per Acre	Production	Price Per	Total Value
				Dollars	
Quince		<i>Tons/Acre</i>	<i>Tons</i>		
Tulare	99	2.15	213	2,018.78	430,000
Sum of Others	14				56,500
State Total	113	2.15	213	2,018.78	486,500
Radishes		<i>Tons/Acre</i>	<i>Tons</i>		
Monterey	223	10.81	2,410	898.34	2,165,000
Riverside	110	33.82	3,720	251.88	937,000
San Bernardino	31	9.68	300	1,233.33	370,000
Ventura	708	27.40	19,400	728.92	14,141,000
Sum of Others	447				2,660,000
State Total	1,519	24.09	25,830	681.88	20,273,000
Rice, Excluding Wild ¹		<i>Tons/Acre</i>	<i>Tons</i>		
Butte	85,400	4.80	410,000	790.25	324,003,000
Colusa	17,000	4.79	81,400	665.98	54,211,000
Glenn	21,500	4.93	106,000	722.70	76,606,000
Placer	10,000	4.60	46,000	700.00	32,200,000
Sacramento	6,160	4.71	29,000	510.10	14,793,000
San Joaquin	8,930	5.04	45,000	750.20	33,759,000
Sutter	50,800	4.41	224,000	758.90	169,994,000
Yolo	8,480	3.18	27,000	769.00	20,763,000
Yuba	37,200	4.38	163,000	699.07	113,948,000
Sum of Others	3,390				7,422,000
State Total	248,860	4.61	1,131,400	742.69	847,699,000
¹ Includes sweet rice.					
Rice, Wild		<i>Tons/Acre</i>	<i>Tons</i>		
Lassen	1,470	0.72	1,060	1,850.94	1,962,000
Modoc	3,500	0.42	1,470	1,850.34	2,720,000
Shasta	5,000				5,220,000
Sum of Others	186				220,000
State Total	10,156	0.51	2,530	1,850.59	10,122,000
Ryegrass		<i>Tons/Acre</i>	<i>Tons</i>		
Riverside	1,420	17.82	25,300	70.00	1,771,000
Sacramento	4,250	3.01	12,800	262.66	3,362,000
Sum of Others	5,050				4,153,000
State Total	10,720	6.72	38,100	134.72	9,286,000
Ryegrass, All ¹		<i>Tons/Acre</i>	<i>Tons</i>		
Riverside	1,420	17.82	25,300	70.00	1,771,000
Sacramento	4,250	3.01	12,800	262.66	3,362,000
Sum of Others	5,050				4,153,000
State Total	10,720	6.72	38,100	134.72	9,286,000
¹ Includes Ryegrass; Ryegrass, Other Perennial; Ryegrass, Perennial, Propagative.					

Commodity Data, 2022						
County	Harvested Acreage	Yield Per Acre	Production	Price Per	Total Value	
				Dollars		
Safflower			Tons/Acre		Tons	
Colusa	380	0.70	266	680.45	181,000	
Sacramento	2,030	0.80	1,620	691.98	1,121,000	
San Joaquin	3,840	0.51	1,960	613.26	1,202,000	
Solano	4,550	0.92	4,200	678.10	2,848,000	
Sutter	2,500	1.65	4,130	688.62	2,844,000	
Yolo	6,030	0.94	5,670	656.08	3,720,000	
Sum of Others	197				116,000	
State Total	19,527	0.92	17,846	667.71	12,032,000	
Seed for Planting, Alfalfa			Tons/Acre		Tons	
Fresno	1,060	0.45	478	7,299.16	3,489,000	
Imperial	24,000	0.42	10,200	7,730.69	78,853,000	
Modoc	45				3,200	
State Total	25,105	0.43	10,678	7,711.37	82,345,200	
Seed for Planting, Bean			Tons/Acre		Tons	
Monterey	544	1.18	642	3,450.16	2,215,000	
Sum of Others	102				207,000	
State Total	646	1.18	642	3,450.16	2,422,000	
Seed for Planting, Bermuda Grass			Tons/Acre		Tons	
Imperial	15,300	0.29	4,370	10,072.54	44,017,000	
State Total	15,300	0.29	4,370	10,072.54	44,017,000	
Seed for Planting, Cotton					Tons	
Kern				240	525.00	126,000
Sum of Others	846					6,853,000
State Total	846			240	525.00	6,979,000
Seed for Planting, Misc			Tons/Acre		Tons	
Colusa	465					11,200,000
Monterey	880	0.87	766	5,809.40	4,450,000	
San Joaquin	1,860				3,996,000	
Yolo	1,160				3,403,000	
Sum of Others	4,370				9,401,000	
State Total	8,735	0.87	766	5,809.40	32,450,000	



Commodity Data, 2022					
County	Harvested Acreage	Yield Per Acre	Production	Price Per	Total Value
				Dollars	
Seed for Planting, Misc Field Crops					
Butte	659				1,375,000
Glenn	439				1,071,000
Kern	381				38,600
Kings	8,590				12,459,000
Sacramento	1,460				2,962,000
San Benito	623				4,361,000
Siskiyou	100				42,900
Solano	1,190				2,804,000
Tehama	121				1,693,000
Tulare	35				5,334,000
Yolo	3,290				5,904,000
Sum of Others	1,460				2,845,000
State Total	18,348				40,889,500
Seed for Planting, Misc Grass					
Yolo	670				4,184,000
State Total	670				4,184,000
Seed for Planting, Misc Vegetable & Vine					
Colusa	3,760				8,658,000
Fresno	1,640				15,284,000
Glenn	691				9,567,000
Imperial	9,680				23,272,000
Kern	1,050				8,264,000
Santa Clara	669				2,681,000
Sutter	1,680				4,986,000
Yolo	1,710				6,704,000
Sum of Others	19				90,000
State Total	20,899				79,506,000
Seed for Planting, Potato					
		<i>Tons/Acre</i>	<i>Tons</i>		
Siskiyou	90	16.22	1,460	260.27	380,000
State Total	90	16.22	1,460	260.27	380,000
Seed for Planting, Rice					
		<i>Tons/Acre</i>	<i>Tons</i>		
Butte	6,370	4.90	31,200	700.00	21,840,000
Colusa	2,800	5.86	16,400	757.74	12,427,000
Glenn	2,720	4.93	13,400	839.70	11,252,000
Sutter	4,060	4.31	17,500	719.94	12,599,000
Sum of Others	70				127,000
State Total	16,020	4.92	78,500	740.36	58,245,000
Seed for Planting, Rye					
		<i>Tons/Acre</i>	<i>Tons</i>		
Siskiyou	150	1.50	225	270.22	60,800
State Total	150	1.50	225	270.22	60,800

Commodity Data, 2022					
County	Harvested Acreage	Yield Per Acre	Production	Price Per	Total Value
				Dollars	
Seed for Planting, Sunflower					
		<i>Tons/Acre</i>	<i>Tons</i>		
Colusa	3,820	0.36	1,390	3,397.12	4,722,000
Glenn	2,180	0.93	2,020	3,437.13	6,943,000
Solano	4,420	0.45	2,000	3,742.00	7,484,000
Sutter	11,200	0.53	5,910	3,420.64	20,216,000
Yolo	12,100				27,038,000
State Total	33,720	0.52	11,320	3,477.47	66,403,000
Seed for Planting, Wheat					
		<i>Tons/Acre</i>	<i>Tons</i>		
Siskiyou	250	3.25	812	280.79	228,000
Sum of Others	1,050				1,149,000
State Total	1,300	3.25	812	280.79	1,377,000
Sheep					
Amador					718,000
Butte					418,000
Calaveras					33,700
Colusa					1,032,000
Fresno					21,542,000
Glenn					1,113,000
Humboldt					307,000
Inyo					875,000
Kern					26,004,000
Lassen					1,844,000
Marin					2,916,000
Mendocino					405,000
Merced					4,714,000
Modoc					2,220,000
Mono					3,445,000
Monterey					235,000
Napa					391,000
Nevada					213,000
Placer					1,832,000
Plumas					94,400
Riverside					1,372,000
San Diego					120,000
San Joaquin					2,827,000
Shasta					254,000
Sierra					48,200
Siskiyou					1,021,000
Solano					9,074,000
Sonoma					4,501,000
Stanislaus					635,000
Tulare					2,185,000
Tuolumne					39,800
Yolo					2,196,000
Sum of Others					2,984,000
State Total					97,609,100

Commodity Data, 2022					
County	Harvested Acreage	Yield Per Acre	Production	Price Per	Total Value
				Dollars	
Silage, All ¹					
Glenn	4,220				2,311,000
Kings	98,900				200,251,000
Marin	1,140				621,000
Merced	184,000				275,990,000
Riverside	6,600				13,857,000
Sacramento	15,900				26,042,000
San Joaquin	136,000				172,653,000
Sonoma	4,540				2,790,000
Tulare	279,000				518,291,000
Sum of Others	259,000				412,311,000
State Total	989,300				1,625,117,000

¹ Includes Alfalfa, Silage; Corn, Silage; Oats, Silage; Silage, Misc; Sorghum, Silage; Wheat, Silage.

Silage, Misc		Tons/Acre	Tons		
Marin	1,140	8.95	10,200	60.88	621,000
Merced	95,100	17.47	1,661,000	60.20	99,984,000
San Joaquin	88,000	8.07	710,000	118.83	84,367,000
Sonoma	3,780	11.90	45,000	51.82	2,332,000
Tulare	154,000	17.73	2,730,000	69.90	190,827,000
Sum of Others	18,800				16,446,000
State Total	360,820	15.08	5,156,200	73.33	394,577,000

Sorghum, All ¹					
Kings	10,100				16,164,000
Riverside	184				315,000
San Bernardino	464				457,000
Stanislaus	2,580				3,543,000
Sum of Others	9,340				12,476,000
State Total	22,668				32,955,000

¹ Includes Sorghum, Grain; Sorghum, Misc Uses; Sorghum, Silage.

Sorghum, Silage		Tons/Acre	Tons		
Kings	10,100	20.10	203,000	79.63	16,164,000
Riverside	184	22.83	4,200	75.00	315,000
San Bernardino	464	15.41	7,150	63.92	457,000
Stanislaus	2,580	17.60	45,400	78.04	3,543,000
Sum of Others	9,340				12,476,000
State Total	22,668	19.49	259,750	78.84	32,955,000

Spinach		Tons/Acre	Tons		
Imperial	7,580	6.10	46,200	1,958.81	90,497,000
Monterey	20,000	7.45	149,000	1,116.40	166,344,000
Riverside	1,570	15.10	23,700	880.38	20,865,000
San Benito	4,410				37,353,000
Santa Barbara	446	11.35	5,060	1,151.38	5,826,000
Santa Clara	919	6.54	6,010	1,512.81	9,092,000
Ventura	807	12.23	9,870	1,090.58	10,764,000
Sum of Others	881				3,654,000
State Total	36,613	7.66	239,840	1,264.96	344,395,000

Commodity Data, 2022

County	Harvested Acreage	Yield Per Acre	Production	Price Per	Total Value
				Dollars	
Squash, All ¹			Tons/Acre		Tons
Riverside	220	8.27	1,820	650.00	1,183,000
San Bernardino	69	13.48	930	727.96	677,000
San Diego	369	11.87	4,380	712.10	3,119,000
San Joaquin	4,270	21.05	89,900	282.58	25,404,000
San Mateo	164	5.64	925	1,360.00	1,258,000
Santa Clara	166	14.76	2,450	659.18	1,615,000
Ventura	505	14.81	7,480	453.48	3,392,000
Sum of Others	2,080				17,492,000
State Total	7,843	18.72	107,885	339.70	54,140,000

¹ Includes Squash, Misc; Squash, Summer; Squash, Winter, Misc; Squash, Winter, Pumpkins.

Squash, Misc			Tons/Acre		Tons
Fresno	1,040	10.87	11,300	789.82	8,925,000
San Bernardino	69	13.48	930	727.96	677,000
San Diego	369	11.87	4,380	712.10	3,119,000
San Joaquin	1,750	18.29	32,000	250.94	8,030,000
Santa Clara	166	14.76	2,450	659.18	1,615,000
Sum of Others	418				2,783,000
State Total	3,812	15.04	51,060	438.03	25,149,000

Squash, Summer			Tons/Acre		Tons
Riverside	220	8.27	1,820	650.00	1,183,000
Sum of Others	68				314,000
State Total	288	8.27	1,820	650.00	1,497,000

Squash, Winter, Pumpkins			Tons/Acre		Tons
San Joaquin	2,520	22.98	57,900	300.07	17,374,000
San Mateo	164	5.64	925	1,360.00	1,258,000
Stanislaus	324	24.97	8,090	389.00	3,147,000
Ventura	505	14.81	7,480	453.48	3,392,000
Sum of Others	226				2,322,000
State Total	3,739	21.18	74,395	338.34	27,493,000



Commodity Data, 2022

County	Harvested Acreage	Yield Per Acre	Production	Price Per	Total Value
				Dollars	
Stone Fruits, All ¹					
Butte	8,060				42,966,000
Colusa	319				1,261,000
Contra Costa	1,350				11,233,000
Fresno	45,200				770,074,000
Kern	4,610				95,218,000
Kings	7,430				138,135,000
Madera	2,080				27,813,000
Merced	5,640				47,557,000
Placer	108				254,000
Riverside	422				1,082,000
Sacramento	1,520				9,654,000
San Benito	948				3,471,000
San Joaquin	23,100				298,270,000
Santa Clara	1,270				7,705,000
Siskiyou	6				99,000
Solano	1,580				9,009,000
Stanislaus	9,660				95,278,000
Sutter	20,500				96,470,000
Tehama	5,150				25,317,000
Tulare	31,900				429,303,000
Yolo	2,300				10,185,000
Yuba	8,860				39,866,000
Sum of Others	3,700				18,426,000
State Total	185,713				2,178,646,000

¹ Includes Apricots; Cherries; Hybrid Stone Fruits; Nectarines; Peaches, Clingstone; Peaches, Freestone; Peaches, Misc; Plums; Prunes.

			Tons		
Straw					
Imperial			174,000	39.40	6,855,000
Merced			6,440	99.53	641,000
Sonoma					65,800
Sum of Others	4,880				2,217,000
State Total	4,880		180,440	41.54	9,778,800

		Tons/Acre	Tons		
Sugar Beets					
Imperial	23,700	45.48	1,078,000	50.03	53,932,000
State Total	23,700	45.48	1,078,000	50.03	53,932,000

		Tons/Acre	Tons		
Sweet Potatoes					
Merced	17,800	15.00	267,000	910.70	243,156,000
Stanislaus	1,940	21.75	42,200	665.54	28,086,000
Sum of Others	736				9,683,000
State Total	20,476	15.66	309,200	877.24	280,925,000

		Tons/Acre	Tons		
Tangelos					
Riverside	150	8.27	1,240	933.87	1,158,000
San Bernardino	30	4.43	133	2,315.79	308,000
Sum of Others	924				7,922,000
State Total	1,104	7.63	1,373	1,067.73	9,388,000

Commodity Data, 2022					
County	Harvested Acreage	Yield Per Acre	Production	Price Per	Total Value
				Dollars	
Tangerines & Mandarins		Tons/Acre	Tons		
Fresno	24,400	9.38	229,000	1,051.00	240,679,000
Kings	231	5.97	1,380	1,421.01	1,961,000
Madera	4,000	11.05	44,200	1,018.91	45,036,000
Placer	274	3.94	1,080	2,799.07	3,023,000
Riverside	1,600	9.00	14,400	1,710.00	24,624,000
San Diego	438	12.79	5,600	1,412.86	7,912,000
Tulare	34,000	9.00	306,000	1,060.00	324,360,000
Ventura	1,610	11.80	19,000	972.42	18,476,000
Sum of Others	28,100				427,461,000
State Total	94,653	9.33	620,660	1,073.17	1,093,532,000
Tomatoes, All ¹					
Colusa	12,400				71,004,000
Contra Costa	2,760				14,587,000
Glenn	800				2,926,000
Kings	28,800				177,492,000
Merced	28,700				156,428,000
Riverside	395				4,091,000
Sacramento	4,240				10,512,000
San Benito	1,090				30,490,000
San Joaquin	20,000				114,174,000
Santa Clara	1,840				22,921,000
Solano	9,500				47,353,000
Stanislaus	10,000				53,478,000
Ventura	336				32,889,000
Yolo	35,100				183,612,000
Sum of Others	96,100				639,155,000
State Total	252,061				1,561,112,000
¹ Includes Tomatoes, Cherry; Tomatoes, Fresh; Tomatoes, Greenhouse; Tomatoes, Misc; Tomatoes, Processing.					
Tomatoes, Fresh		Tons/Acre	Tons		
Merced	4,060	25.12	102,000	387.76	39,552,000
San Benito	1,090	21.93	23,900	1,275.73	30,490,000
San Joaquin	950	41.05	39,000	890.64	34,735,000
Santa Clara	1,010	31.19	31,500	536.89	16,912,000
Sum of Others	5,240				220,661,000
State Total	12,350	27.62	196,400	619.60	342,350,000
Tomatoes, Misc		Tons/Acre	Tons		
Contra Costa	2,760	63.04	174,000	83.83	14,587,000
Riverside	395	23.01	9,090	450.06	4,091,000
Stanislaus	10,000	45.30	453,000	118.05	53,478,000
Ventura	336	91.07	30,600	1,074.80	32,889,000
Sum of Others	1,230				875,000
State Total	14,721	49.42	666,690	157.56	105,920,000

Commodity Data, 2022					
County	Harvested Acreage	Yield Per Acre	Production	Price Per	Total Value
				Dollars	
Tomatoes, Processing			Tons/Acre		Tons
Colusa	12,400	54.03	670,000	105.98	71,004,000
Fresno	56,300	49.15	2,767,000	89.00	246,263,000
Glenn	800	41.12	32,900	88.94	2,926,000
Kern	10,200	54.90	560,000	105.00	58,798,000
Kings	28,800	55.94	1,611,000	110.17	177,492,000
Madera	5,300	38.68	205,000	111.89	22,937,000
Merced	24,600	44.11	1,085,000	107.72	116,876,000
Sacramento	4,240	23.14	98,100	107.16	10,512,000
San Joaquin	19,000	38.42	730,000	108.82	79,439,000
Santa Clara	824	63.96	52,700	114.02	6,009,000
Solano	9,500	46.21	439,000	107.87	47,353,000
Sutter	17,900	46.82	838,000	106.95	89,621,000
Yolo	35,100	48.89	1,716,000	107.00	183,612,000
State Total	224,964	48.03	10,804,700	103.00	1,112,842,000
Triticale, All ¹			Tons/Acre		Tons
Kings	10,700	16.82	180,000	78.41	14,113,000
Sacramento	2,700	3.50	9,460	281.08	2,659,000
Siskiyou	750	0.90	675	219.26	148,000
Solano	4,400	2.91	12,800	236.17	3,023,000
Sum of Others	14,000				24,460,000
State Total	32,550	10.94	202,935	98.27	44,403,000
¹ Includes Triticale, Hay; Triticale, Misc Uses.					
Triticale, Hay			Tons/Acre		Tons
Siskiyou	750	0.90	675	219.26	148,000
Solano	4,400	2.91	12,800	236.17	3,023,000
Sum of Others	5,350				7,408,000
State Total	10,500	2.62	13,475	235.32	10,579,000
Triticale, Misc Uses			Tons/Acre		Tons
Kings	10,700	16.82	180,000	78.41	14,113,000
Sacramento	2,700	3.50	9,460	281.08	2,659,000
Sum of Others	8,630				17,051,000
State Total	22,030	14.14	189,460	88.53	33,823,000
Turkeys					
Merced					37,970,000
San Joaquin					7,361,000
Sum of Others					50,967,000
State Total					96,298,000
Turnips					
Sum of Others	166				4,011,000
State Total	166				4,011,000

Commodity Data, 2022				
County	Harvested Acreage	Yield Per Acre	Production	Price Per
				Total Value
				Dollars
Vegetables, Misc				
Alameda	150			318,000
Amador				92,700
Butte				1,287,000
Calaveras				49,800
Colusa				23,000,000
Contra Costa	398			3,057,000
Glenn	50			235,000
Humboldt	300			3,679,000
Kings	6,410			37,308,000
Lake	9			287,000
Marin	270			3,400,000
Mariposa				154,000
Mendocino	350			1,387,000
Napa	16			384,000
Nevada	105			3,352,000
Placer				2,001,000
Plumas				210,000
Riverside	5,100			27,478,000
Sacramento	2,670			20,303,000
San Benito	6,660			56,509,000
San Joaquin	1,050			3,644,000
San Luis Obispo	9,710			85,185,000
San Mateo	418			9,704,000
Santa Barbara	6,770			180,326,000
Santa Clara	1,450			23,326,000
Sierra	15			451,000
Siskiyou				13,250,000
Solano	2,600			51,417,000
Sonoma	254			2,969,000
Tehama	121			363,000
Tulare	4,710			25,138,000
Tuolumne	11			389,000
Ventura	4,260			43,053,000
Yolo	6,290			29,877,000
Sum of Others	41,700			528,236,000
State Total	101,847			1,181,819,500



Commodity Data, 2022					
County	Harvested Acreage	Yield Per Acre	Production	Price Per	Total Value
				Dollars	
Walnuts ¹		Tons/Acre	Tons		
Amador	233	0.51	119	873.95	104,000
Butte	53,700	1.50	80,500	800.26	64,421,000
Calaveras	727	1.22	887	1,269.45	1,126,000
Colusa	22,000	2.28	50,200	815.36	40,931,000
Contra Costa	541	1.77	958	1,617.95	1,550,000
Fresno	10,900	1.74	19,000	968.00	18,392,000
Glenn	41,700	1.94	80,900	830.98	67,226,000
Kern	500	1.60	800	983.75	787,000
Kings	16,500	1.99	32,800	909.36	29,827,000
Lake	3,480	0.07	262	916.03	240,000
Madera	2,500	1.77	4,420	1,161.31	5,133,000
Mendocino	20				
Merced	8,880	1.18	10,500	988.10	10,375,000
Placer	4,180	1.65	6,900	760.00	5,244,000
Sacramento	1,890	1.20	2,270	920.26	2,089,000
San Benito	1,330	0.50	663	1,200.60	796,000
San Joaquin	74,500	2.58	192,000	760.40	145,997,000
Santa Clara	299	1.59	476	981.09	467,000
Shasta	1,400	1.15	1,610	939.75	1,513,000
Solano	10,200	1.30	13,300	849.92	11,304,000
Stanislaus	36,000	1.56	56,200	760.30	42,729,000
Sutter	37,500	1.52	57,000	763.67	43,529,000
Tehama	30,700	1.96	60,100	753.36	45,277,000
Tulare	39,900	2.03	81,000	951.00	77,031,000
Yolo	15,000	1.55	23,200	651.98	15,126,000
Yuba	17,000	2.06	35,000	615.17	21,531,000
Sum of Others	464				747,000
State Total	432,044	1.88	811,065	804.80	653,492,000

¹ Production is reported as in-shell or shelled basis depending on the county.

Wheat, All ¹					
Colusa	4,660				4,292,000
Contra Costa	2,060				555,000
Glenn	10,300				8,407,000
Imperial	48,400				65,807,000
Kern	52,000				47,714,000
Kings	57,000				80,430,000
Lassen	4,580				3,112,000
Merced	7,980				10,403,000
Modoc	5,000				3,975,000
Riverside	16,800				8,701,000
Sacramento	8,480				7,213,000
San Joaquin	18,900				18,151,000
Siskiyou	18,000				13,169,000
Solano	7,730				6,031,000
Sutter	12,200				16,177,000
Tehama	2,450				2,024,000
Tulare	17,200				15,751,000
Yolo	23,400				16,407,000
Sum of Others	111,000				105,464,000
State Total	428,140				433,783,000

¹ Includes Wheat, Grain; Wheat, Hay; Wheat, Misc Uses; Wheat, Silage.

Commodity Data, 2022					
County	Harvested Acreage	Yield Per Acre	Production	Price Per	Total Value
				Dollars	
Wheat, Grain		Tons/Acre	Tons		
Colusa	4,660	3.11	14,500	296.00	4,292,000
Contra Costa	2,060	1.86	3,830	144.91	555,000
Fresno	23,000	2.80	64,400	397.00	25,567,000
Glenn	6,640	3.52	23,400	304.57	7,127,000
Imperial	48,400	3.60	174,000	378.20	65,807,000
Kern	18,100	1.51	27,300	349.74	9,548,000
Kings	14,800	3.67	54,300	341.25	18,530,000
Lassen	4,580	2.00	9,150	340.11	3,112,000
Madera	730	3.07	2,240	315.18	706,000
Merced	7,980	4.44	35,400	293.87	10,403,000
Modoc	5,000	3.00	15,000	265.00	3,975,000
Riverside	15,800	2.30	36,300	205.23	7,450,000
Siskiyou	18,000	3.32	59,800	220.22	13,169,000
Solano	7,730	2.70	20,900	288.56	6,031,000
Sutter	12,200	4.08	49,800	324.84	16,177,000
Tulare	17,200	2.71	46,600	338.00	15,751,000
Sum of Others	505				529,000
State Total	207,385	3.08	636,920	326.89	208,729,000
Wheat, Hay		Tons/Acre	Tons		
Fresno	22,400	4.33	97,000	231.00	22,407,000
Kings	1,210	4.23	5,120	349.22	1,788,000
Stanislaus	8,370	3.61	30,200	280.63	8,475,000
Tehama	2,450	2.67	6,550	309.01	2,024,000
Sum of Others	1,800				1,387,000
State Total	36,230	4.03	138,870	249.83	36,081,000
Wheat, Misc Uses		Tons/Acre	Tons		
Sacramento	8,480	2.90	24,600	293.21	7,213,000
San Joaquin	18,900	2.68	50,600	358.71	18,151,000
Yolo	23,400	2.57	60,100	273.00	16,407,000
Sum of Others	597				326,000
State Total	51,377	2.66	135,300	308.73	42,097,000
Wheat, Silage		Tons/Acre	Tons		
Fresno	17,900	11.79	211,000	50.00	10,550,000
Glenn	3,660	10.00	36,600	34.97	1,280,000
Kern	33,900	16.70	566,000	67.43	38,166,000
Kings	41,000	21.46	880,000	68.31	60,112,000
Madera	16,700	16.35	273,000	65.97	18,010,000
Riverside	990	14.04	13,900	90.00	1,251,000
Stanislaus	18,600	14.89	277,000	63.20	17,507,000
State Total	132,750	17.01	2,257,500	65.06	146,876,000

COUNTY AGRICULTURAL COMMISSIONERS and SEALERS of WEIGHTS & MEASURES

Contact Information

Effective: January 1, 2024

Co. Comm/Sealer	Address	Telephone/Fax	General County E-Mail/Office Hours
Alameda Cathy Roache	224 W. Winton Ave, Rm 184 Hayward, CA 94544	(510) 670-5232 (510) 783-3928	alameda.ag@acgov.org M-F: 8:30am - 4:30pm
Alpine (see El Dorado/Alpine)			
Amador Eric Mayberry	12200-B Airport Road Jackson, CA 95642-9527	(209) 223-6487 (209) 223-3312	agriculture@amadorgov.org M-F: 8am - 5pm
Butte Louie Mendoza, Jr.	316 Nelson Ave Oroville, CA 95965-3318	(530) 552-4100 (530) 538-7594	butteag@buttecounty.net M-F: 7:30am -12pm; 1pm - 4:30pm (closed 12 - 1pm)
Calaveras Jessica Fowler	23 E. Charles St. (Physical Location) 891 Mountain Ranch Road (Mailing Address) San Andreas, CA 95249-9709	(209) 754-6504 x 3 (209) 754-9256	agpublic@co.calaveras.ca.us M-F: 9am - 4pm
Colusa Anastacia Allen	100 Sunrise Blvd, Ste F Colusa, CA 95932-3246	(530) 458-0580 (530) 458-5000	ccag@countyofcolusa.org M-F: 8am - 5pm
Contra Costa Matt Slattengren	2380 Bisso Lane Concord, CA 94520	(925) 608-6600	AGCommissioner@ag.cccounty.us M-F: 8am - 5pm
Del Norte Justin Riggs	2650 Washington Blvd Crescent City, CA 95531-8627	(707) 464-7235 (707) 465-6044	dnag@co.del-norte.ca.us M-F: 8am - 5pm
El Dorado/Alpine LeeAnne Mila	311 Fair Lane Placerville, CA 95667-4195	(530) 621-5520 (530) 626-4756	eldcag@edcgov.us M-F: 7am -5pm; Holiday weeks: 8am-5pm
Fresno Melissa Cregan	1730 S Maple Ave Fresno, CA 93702-4596	(559) 600-7510 (559) 455-2415	fresnoag@co.fresno.ca.us M-F: 8am - 5pm
Glenn Marcie Skelton	720 N Colusa Street (Physical Location) PO Box 351 (Mailing Address) Willows, CA 95988-0351	(530) 934-6501 (530) 934-6503	agcommr@countyofglenn.net M-F: 8am - 5pm
Humboldt Weylan Shaw (Acting)	5630 S Broadway Eureka, CA 95503-6905	(707) 441-5260 (707) 445-7220	agcommissioner@co.humboldt.ca.us M-F: 8am - 12pm, 1pm - 5pm (closed 12 - 1 pm)
Imperial Jolene Dessert	852 Broadway El Centro, CA 92243-2850	(442) 265-1500 (760) 353-9420	agcom@co.imperial.ca.us M-F: 8am - 5pm
Inyo/Mono Nathan Reade	207 W South St Bishop, CA 93514-3492	(760) 873-7860 (760) 872-1610	inyomonoag@gmail.com M-F: 7am - 4:30pm
Kern Glenn Fankhauser	1001 S Mount Vernon Ave Bakersfield, CA 93307-2857	(661) 868-6300 (661) 868-6301	agcomm@kerncounty.com M-F: 8am - 5pm
Kings Jimmy Hook	680 N Campus Drive, Suite B Hanford, CA 93230-5923	(559) 852-2830 (559) 582-5251	agstaff@co.kings.ca.us M-F: 8am - 5pm
Lake Katherine Vanderwall	883 Lakeport Blvd Lakeport, CA 95453	(707) 263-0217 (707) 263-1052	lakecoag@co.lake.ca.us M-F: 8am - 5pm
Lassen Craig Hemphill	175 Russell Ave Susanville, CA 96130-4299	(530) 251-8110 (530) 257-6515	agcommissioner@co.lassen.ca.us M-F: 8am - 9am or by appointment
Los Angeles Kurt Floren	12300 Lower Azusa Rd Arcadia, CA 91006	(626) 575-5451 (626) 350-3243	losangag@acwm.lacounty.gov M-Th: 7am - 5:30pm (closed Friday)
Madera Rusty Lantsberger	145 Tozer Street, Suite 101 Madera, CA 93638	(559) 675-7876 (559) 674-4071	Commissioner@madera-county.com M-F: 8am - 5pm
Marin Stefan Parnay	1682 Novato Blvd, 150-A Novato, CA 94947-7021	(415) 473-6700 (415) 473-7543	marin.dept.ag@marincounty.org M-F: 8am - 4pm
Mariposa Monica Nielsen	5009 Fairgrounds Road (Physical Location) PO Box 905 (Mailing Address) Mariposa, CA 95338-0905	(209) 966-2075 (209) 966-2056	agcomm@mariposacounty.org M-F: 8am - 1pm; 2pm - 5pm (closed 1 - 2 pm)
Mendocino Vacant	890 North Bush St. Ukiah, CA 95482-3745	(707) 234-6830 (707) 463-0240	agcomm@co.mendocino.ca.us M-F: 8am -12pm; 1pm - 5pm (closed 12pm - 1pm)
Merced Sean Runyon	2139 Wardrobe Ave Merced, CA 95341-6445	(209) 385-7431 (209) 725-3536	agdeptemail@co.merced.ca.us M-F: 8am - 5 pm
Modoc Heather Kelly	202 W 4th Street Alturas, CA 96101-3915	(530) 233-6401 (530) 233-5542	agcommissioner@co.modoc.ca.us M-Th: 7am -5pm
Mono (See Inyo/Mono)			
Monterey Juan Hidalgo	1428 Abbott Street Salinas, CA 93901	(831) 759-7325 (831) 422-5003	agcomm@co.monterey.ca.us M-F: 8am - 5pm
Napa Tracy Cleveland	1710 Soscol Ave, Suite 3 Napa, CA 94559-1315	(707) 253-4357 (707) 253-4881	agcommissioner@countyofnapa.org M-F: 8am - 5pm
Nevada Chris deNijs	950 Maidu Ave, Suite 170 Nevada City, CA 95959	(530) 470-2690 (530) 470-2939	agdept@nevadacountyca.gov M-F: 8-Noon; 1-4:30
Orange Jose Arriaga	222 E Bristol Lane Orange, CA 92865-2714	(714) 955-0100 (714)921-2713	oc.agri.commissioner@ocpw.ocgov.com M-F: 8am - 5pm
Placer Josh Huntsinger	11477 E Ave Auburn, CA 95603-2799	(530) 889-7372 (530) 823-1698	PlacerAg@placer.ca.gov M-F: 8am - 5pm
Plumas/Sierra Willo Vieira	208 Fairgrounds Road Quincy, CA 95971-9462	(530) 283-6365 (530) 283-4210	WilloVieira@countyofplumas.com M-F: 8am - 5pm
Riverside Ruben Arroyo	4080 Lemon St, Rm 19 (Physical Location) PO Box 1089 (Mailing Address) Riverside, CA 92502-1089	(951) 955-3045 (951)-955-3012	agdept@rivco.org M-Th: 7:00-5:00

Co. Comm/Sealer	Address	Telephone/Fax	General County E-Mail/Office Hours
Sacramento Chris Flores	4137 Branch Center Road Sacramento, CA 95827-3897	(916) 875-6603 (916) 875-6150	agcomm@saccounty.gov M-F: 8am -12pm; 1:pm - 4pm (closed 12pm - 1pm)
San Benito Ken Griffin (Acting)	3224 Southside Road PO Box 699 Hollister, CA 95024-0699	(831) 637-5344 (831) 637-9015	kgriffin@cosb.us M-F: 8am -12pm; 1:pm - 5pm (closed 12pm - 1pm)
San Bernardino Brady Gergovich	777E Rialto Ave San Bernardino, CA 92415-0720	(909) 387-2105 (909) 387-2449	awm@awm.sbcounty.gov M-F:7am - 5:30pm
San Diego Ha Dang	9325 Hazard Way San Diego, CA 92123-1217	(858) 694-2778 (858) 467-9278	wm.awm@sdcounty.ca.gov M-F: 8am - 5pm
San Francisco Cree Morgan	49 South Van Ness Ave, Suite 600 San Francisco, CA 94103	(415) 252-3950 (415) 252-3869	SFAgriculture@sfdph.org SFWeightsAndMeasures@sfdph.org M-F: 8am - 5pm
San Joaquin Kamal Bagri	2101 East Earhart Avenue, Suite 100 Stockton, CA 95206-3294	(209) 953-6000 (209) 953-6022	stocktonaq2@sjgov.org weightsandmeasures@sjgov.org M-F: 8am - 5pm
San Luis Obispo Martin Settevendemie	2156 Sierra Way, Suite A San Luis Obispo, CA 93401-4556	(805) 781-5910 (805) 781-1035	agcommslo@co.slo.ca.us M-F: 8am - 5pm
San Mateo Koren Widdel	728 Heller Street (Physical Location) PO Box 999 (Mailing Address) Redwood City, CA 94064-0999	(650) 363-4700 (650) 367-0130	smateoag@smcgov.org M-F: 8am- 5pm
Santa Barbara Jose Chang	263 Camino Del Remedio Santa Barbara, CA 93110-1335	(805) 681-5600 (805) 681-5603	agcommissioner@agcommissioner.com M-F: 8am - 4:30pm
Santa Clara Joseph Deviney	1553 Berger Dr, Bldg 1 San Jose, CA 5112-2795	(408) 918-4646 (408) 286-2460	scc.agriculture@cecp.sccgov.org M-F: 8am - 5pm
Santa Cruz David Sanford	175 Westridge Drive Watsonville, CA 95076-2797	(831) 763-8080 (831) 763-8255	Agc001@agdept.com M-F: 8am -12pm; 1:pm - 5pm (closed 12pm - 1pm)
Shasta John Ingram	3179 Bechelli Lane, St 210 Redding, CA 96002-2041	(530) 224-4949 (530) 224-4951	shastaag@co.shasta.ca.us M-F: 8am - 5pm
Sierra (See Plumas/Sierra)			
Siskiyou Jim Smith	525 S Foothill Drive Yreka, CA 96097-3090	(530) 841-4033 (530) 842-6690	jsmith@co.siskiyou.ca.us M-F: 8am - 5pm
Solano Ed King	2543 Cordelia Rd (Physical Address) 675 Texas Street (Mailing Address) Fairfield, CA 94533-5627	(707) 784-1310 (707) 784-1330	agcomm48@solanocounty.com M-F: 8am - 5pm
Sonoma Andrew Smith	133 Aviation Blvd, Ste 110 Santa Rosa, CA 95403-2893	(707) 565-2371 (707) 565-3850	sonomaag@sonoma-county.org M-F: 8am - 4:30pm
Stanislaus Linda Pinfold	3800 Cornucopia Way, Ste B Modesto, CA 95358-9494	(209) 525-4730 (209) 525-4790	agcom50@stancounty.com M-F: 8am - 4:30pm
Sutter Lisa Herbert	142 Garden Highway Yuba City, CA 95991-5512	(530) 822-7500 (530) 822-7510	sutterag@co.sutter.ca.us M-F: 8am - 5pm
Tehama Doni Rulofson	1844 Walnut Street (Physical Address) PO Box 38 (Mailing Address) Red Bluff, CA 96080	(530) 527-4504 (530) 529-1049	drulofson@tehamaag.net M-F: 8am - 12pm; 1pm - 5pm (closed 12pm - 1pm)
Trinity Angela Blanchard	173 Tom Bell Road (Physical Address) PO Box 1446 (Mailing Address) Weaverville, CA 96093-1466	(530) 623-1356 (530) 623-1391	ablanchard@trinitycounty.org M-F: 8am - 12pm; 1pm - 5pm (closed 12pm - 1pm)
Tulare Tom Tucker	4437 S Laspina Street Tulare, CA 93274	(559) 684-3350 (559) 713-3768	aginfo@tularecounty.ca.gov M-F: 8am - 5pm
Tuolumne Kelle Schroeder	22365 S Airport Rd (Physical Location) 2 S Green St (Mailing Address) Sonora, CA 95370-4617	(209) 533-5691 (209) 533-5520	AgCommissioner@tuolumnecounty.ca.gov M-F: 8am - 4pm
Ventura Korinne Bell	555 Airport Way, Suite E Camarillo, CA 93010	(805) 388-4222 (805) 388-4209	VenturaCountyAg.Commissioner@ventura.org M-F: 7am-11:30; 12:30pm-4pm (closed 11:30-12:30)
Yolo Humberto Izquierdo	70 Cottonwood Street Woodland, CA 95695-2593	(530) 666-8140 (530) 662-6094	agriculture@yolocounty.org M-F: 7am - 4pm
Yuba Steve Scheer	915 8th Street, Ste 127 Marysville, CA 95901	(530) 749-5400 (530) 749-5404	YubaAg@co.yuba.ca.us M-F: 8am - 12pm; 1pm - 5pm (closed 12pm - 1 pm)

**More agricultural statistics:
nass.usda.gov**

**Assistance finding data online:
916-738-6600
nassrfopcr@usda.gov**

**Individual county reports:
cacasa.org/crop-reports/**

This publication is based on the annual Crop Reports compiled by the California County Agricultural Commissioners. The methodology and data sources for the county reports varies between counties. Data sources may include voluntary producer surveys, regulatory and inspection data, shipment data, and commodity commission assessments.

USDA's National Agricultural Statistics Service, Pacific Regional Field Office compiles the data in cooperation with the California Department of Food and Agriculture.



2022 CENSUS OF AGRICULTURE

**THANK YOU FOR YOUR PARTICIPATION.
YOUR RESPONSE TELLS THE STORY
OF U.S. AGRICULTURE.**

DATA COMING FEBRUARY 2024
nass.usda.gov/AgCensus

YOUR VOICE. YOUR FUTURE. YOUR OPPORTUNITY.

USDA  **United States Department of Agriculture**
National Agricultural Statistics Service

#AgCensus
 

California Department of Food and Agriculture