



# California Crop Weather

Cooperating with the California Department of Food and Agriculture  
Pacific Region • P.O. Box 1258 • Sacramento, CA 95812 • (916) 738-6600 • (855) 270-2722 FAX • [www.nass.usda.gov/ca](http://www.nass.usda.gov/ca)

**WEEK ENDING: July 11, 2021**  
**RELEASED: July 12, 2021**

**FREQUENCY: Weekly**  
**VOL. 42 NO. 15**

## WEATHER

Temperature lows for California ranged from low 40s to high 70s in the mountains, low 50s to low 70s along the coast, mid 50s to high 80s in the valley, and high 50s to low 90s in the desert. Temperature highs for the state ranged from high 50s to mid 110s along the coast, high 70s to low 100s in the mountains, low 90s to low 110s in the valley, and low 100s to high 110s in the desert.

## FIELD CROPS

With high temperatures across the state, irrigation was a priority for row crops. In Tulare County, farmers finished harvesting **wheat** and **barley**. **Sorghum** planting was complete. **Corn** was growing well. **Oats** and **alfalfa** fields were being cut, dried, and baled for hay. **Cotton** was flowering. The extreme heat dried out many crops and newer corn crops needed more irrigation. In Siskiyou, Trinity, and Modoc counties, alfalfa fields showed dried down splotches from pests or disease and winter wheat harvest was complete. In Sutter County, wheat harvest was in progress. In Stanislaus County, alfalfa was being cut and baled. **Dry Edible Beans** continued to grow.

## FRUIT CROPS

Stone fruit orchards were irrigated. **Peach**, **nectarine**, and **plum** harvests were ongoing. **Apricot** harvest began to wrap up. **Pomegranates** and **apples** steadily progressed. **Kiwifruit** and **grapes** continued to size well as fruit matured. **Pummelo**, **tangelo**, **lemon**, **lime**, and **grapefruit** harvests continued. **Olive** and **persimmon** maturation continued.

## NUT CROPS

Orchard preparation for harvest continued. Supports were put under limbs to assist some heavy set trees in **almond** orchards. **Walnut** and **pistachio** orchards were developing well.

## VEGETABLE CROPS

In San Mateo County, **lettuce**, **chard**, and **beets** were in full harvest. In Stanislaus County, **garlic** fields were being prepared for harvest. **Tomato** crops progressed well and the earliest fields will begin being harvested in mid-July. In Tulare County, spring lettuce, **melons**, **onions**, **eggplant**, **zucchini**, and **herbs** were harvested. Producers were offering early summer vegetables such as **squash**, **cucumbers**, and **peppers** for sale at local markets.

## LIVESTOCK

Rangeland and non-irrigated pasture were in poor to very poor condition. Irrigated range remained in good to excellent condition. Bees were active in melon, squash, and sunflower fields. Sheep grazed on old alfalfa fields and retired farmland. Water continued to be trucked in to fill drying foothill stock ponds. Cattle supplemental feeding continued. The exceptionally dry conditions forced some cattle to be moved off some range or moved to grazing usually used later in the season. Wildfire damaged some range and AUM land in the northern counties.

**CALIFORNIA CROP WEATHER – WEEK ENDING JULY 11, 2021**

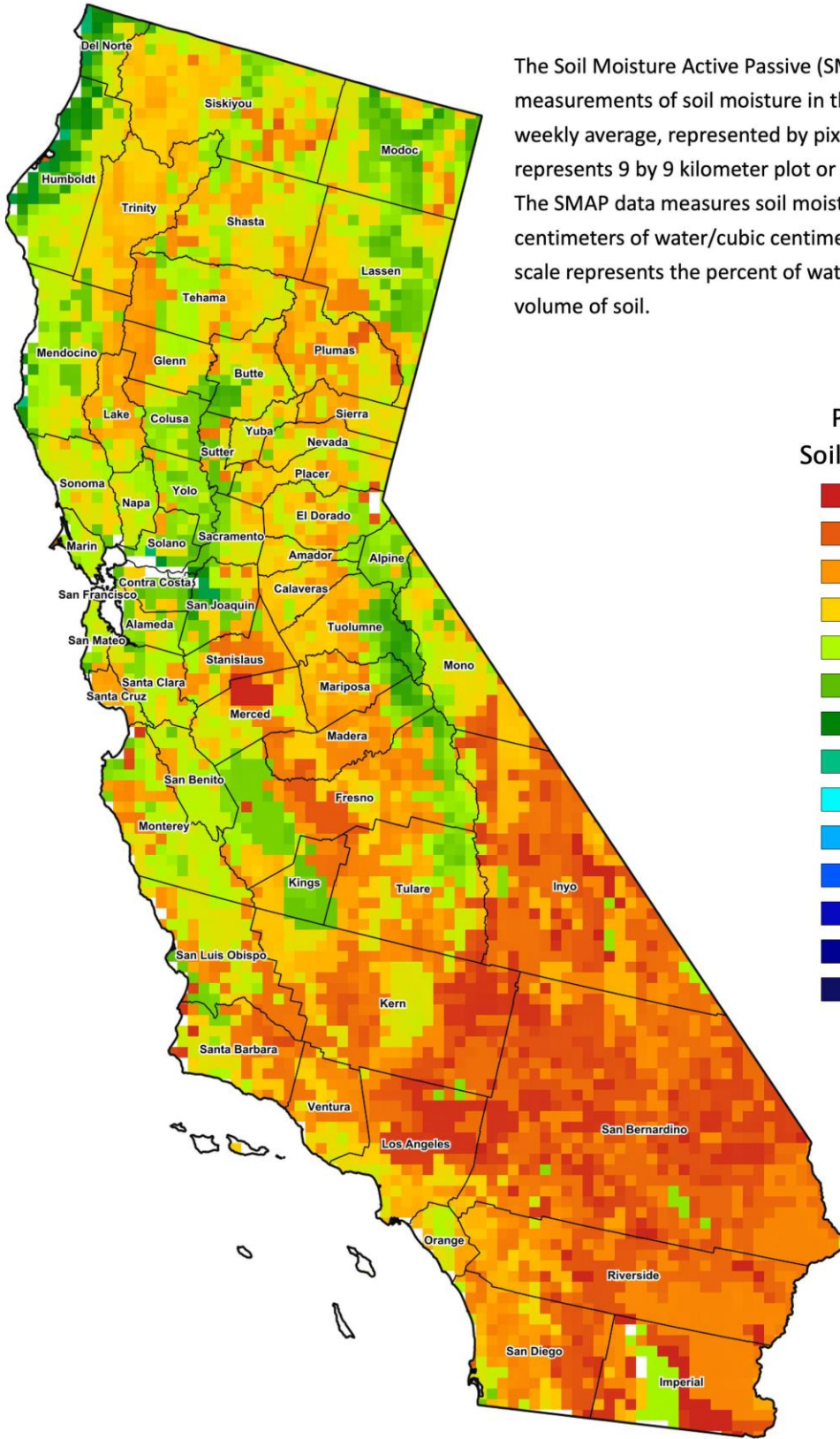
STATIONS	TEMPERATURE				GROWING DEGREE HOURS AT 60°F BASE		RAIN DAYS	PRECIPITATION <sup>1</sup>			
	Average for Week Ending Jul 11, 2021	Departure from Normal <sup>2</sup>	High	Low	This Year	Normal Year <sup>2</sup>	This Season	This Week	This Season	Normal Season <sup>2</sup>	Normal Year <sup>2</sup>
					Jan 1- Jul 11, 2021	Jan 1- Jul 11, 2021	Oct 1- Jul 11, 2021	Week Ending Jul 11, 2021	Oct 1- Jul 11, 2021	Oct 1- Jul 11	Oct 1- Sept 30
	-- Degrees Fahrenheit --				-- Number --		-- Days <sup>3</sup> --	-- Inches of Precipitation --			
<b>North Coast</b>											
Eureka WFO	57	0	63	52	17	0	100	0.03	24.35	39.33	40.53
Ukiah	81	8	110	53	880	468	51	0.00	13.47	36.80	37.61
Santa Rosa	70	2	96	50	448	307	44	0.00	12.87	35.85	36.51
Napa State Hospital	67	1	87	52	359	218	41	0.00	7.48	20.04	20.52
<b>Central Coast</b>											
San Francisco	65	1	77	57	332	135	40	0.00	7.84	20.44	20.79
San Jose	69	-2	86	56	493	539	33	0.00	5.33	14.67	15.02
Salinas	64	1	77	55	235	104	38	0.02	5.81	12.63	12.91
Monterey	63	3	72	56	180	17	39	0.00	7.57	15.87	16.23
Paso Robles	82	9	114	53	852	544	22	0.00	6.74	12.45	12.87
<b>Sacramento Valley</b>											
Redding	89	7	113	67	1547	983	51	0.00	13.81	33.75	34.80
Red Bluff	89	8	112	65	1548	998	46	0.00	9.23	23.81	24.63
Willows	N/A	N/A	N/A	N/A	N/A	N/A	N/A	N/A	N/A	N/A	N/A
Oroville	88	9	113	64	1454	948	38	0.00	8.77	30.71	31.72
Marysville	84	7	111	58	1234	854	36	0.00	7.14	22.15	22.88
Sacramento	81	5	110	56	1154	774	33	0.00	6.68	20.81	21.35
<b>San Joaquin Valley</b>											
Stockton	80	4	106	54	933	802	28	0.00	7.89	13.76	14.14
Modesto	83	4	107	59	1108	1033	25	0.00	7.13	12.83	13.19
Merced Macready	85	7	111	61	1217	870	29	0.00	7.01	12.19	12.59
Madera	84	5	109	56	1209	921	19	0.00	1.78	11.74	12.10
Fresno	90	8	111	68	1664	1185	26	0.00	6.59	11.32	11.57
Lemoore	87	9	113	61	1346	938	22	0.00	4.30	7.71	7.95
Visalia	86	6	110	65	1486	1036	26	0.00	5.15	10.77	10.99
Bakersfield	91	8	110	72	1779	1228	20	0.00	2.78	6.35	6.51
<b>Cascade Sierra</b>											
Alturas	74	9	102	43	420	87	60	0.00	5.84	13.04	14.22
Mount Shasta	76	9	102	52	560	142	68	0.00	18.52	42.00	43.48
Blue Canyon	79	10	91	66	561	166	65	0.00	30.95	63.26	65.00
Yosemite Valley	N/A	N/A	N/A	N/A	N/A	N/A	N/A	N/A	N/A	N/A	N/A
<b>South Coast</b>											
Santa Maria	66	3	87	54	207	65	25	0.00	6.89	13.77	14.05
Santa Barbara	67	2	78	57	305	166	17	0.00	7.32	17.37	17.89
Oxnard	68	3	78	60	353	186	13	0.00	2.82	14.36	14.71
Riverside	81	4	98	61	1234	937	14	0.00	4.38	12.01	12.50
Los Angeles	68	0	76	60	509	394	13	0.00	5.00	12.54	12.92
San Diego	72	3	81	66	768	518	30	0.00	4.52	10.15	10.42
<b>Southeast Interior</b>											
Bishop	86	9	110	59	1034	666	6	0.00	1.63	4.75	5.21
Daggett	98	10	117	75	2150	1623	10	0.00	0.63	3.23	4.08
Lancaster	91	9	113	61	1522	1033	12	0.00	1.33	7.07	7.43
Thermal	97	7	114	70	2666	2157	7	0.00	0.35	2.66	3.22
Blythe	101	7	117	82	2793	2407	5	0.00	0.94	2.67	3.85
Imperial	97	5	115	76	2527	2228	1	0.00	0.69	2.55	3.46

<sup>1</sup> Rain or melted snow/ice.

<sup>2</sup> Normal periods 1980-2010 used in departure from normal calculations.

<sup>3</sup> Total number of days with precipitation events this season.

Data retrieved from NOAA and NWS. Calculated by USDA NASS.  
All rights reserved.



The Soil Moisture Active Passive (SMAP) provides measurements of soil moisture in the root zone as a weekly average, represented by pixels. Each pixel represents 9 by 9 kilometer plot or about 20,000 acres. The SMAP data measures soil moisture in cubic centimeters of water/cubic centimeters of soil. The scale represents the percent of water in a given volume of soil.

