



California Crop Weather

Cooperating with the California Department of Food and Agriculture

Pacific Region • P.O. Box 1258 • Sacramento, CA 95812 • (916) 738-6600 • (855) 270-2722 FAX • www.nass.usda.gov/ca

WEEK ENDING: July 25, 2021
RELEASED: July 26, 2021

FREQUENCY: Weekly
VOL. 42 NO. 17

WEATHER

Temperature lows for California ranged from low 40s to low 70s in the mountains, mid 40s to low 70s along the coast, mid 50s to low 80s in the valley, and high 50s to low 90s in the desert. Temperature highs for the state ranged from high 50s to mid 100s along the coast, high 60s to high 90s in the mountains, low 90s to high 100s in the valley, and mid 90s to mid 110s in the desert.

FIELD CROPS

With high temperatures across the state, irrigation continued to be a priority for row crops. In Tulare County, growers turned on irrigation systems to keep soil moist to support growth. **Alfalfa** fields continued to be cut, dried, and baled for hay. **Cotton** was flowering. The extreme heat continued to dry out many crops. **Corn** fields continued to be harvested for silage while other fields continued to grow steadily. **Beans** continued to grow. In Stanislaus County, some stands of alfalfa continued to bloom while other stands were being cut, dried and baled.

FRUIT CROPS

Stone fruit orchard clean-up was ongoing while harvest accelerated. Orchard sprays continued to combat spider mites and Navel Orange Worm. **Apricots** were topped. **Cherry** growth was evident. High temperatures continued to affect the ripening of **peaches, nectarines, apricots, and plums**. **Pomegranates, apples, and kiwifruit** continued to mature. **Grape** vineyards were treated for mildew, rot, and pests. Early varieties of grape continued to be harvested. **Pummelo, tangelo, lemon, lime, and grapefruit** harvests continued. **Olive** and **persimmon** maturation was ongoing.

NUT CROPS

Final irrigation efforts and orchard preparation before harvest continued. Orchards were treated for various pests. **Almond, walnut, and pistachio** orchards were developing well.

VEGETABLE CROPS

In Fresno County, processing **tomatoes** were harvested. Bell **peppers**, summer **carrots**, and fresh **onions** progressed well. In Stanislaus County, sweet **corn**, honeydew **melons**, and cantaloupe melons were harvested. **Sweet potatoes** and peppers grew well. In Tulare County, spring **lettuce**, melons, onions, **eggplants, zucchini, and herbs** were harvested. Producers offered summer vegetables such as **squash, cucumbers, and peppers** for sale at local markets.

LIVESTOCK

Rangeland and non-irrigated pasture were in poor to very poor condition. Irrigated range remained in good to excellent condition. Bees were active in melon and squash fields. Cattle supplemental feeding continued. Deteriorating water and forage conditions drove some ranchers to relocate cattle to range usually reserved for fall grazing.

CALIFORNIA CROP WEATHER – WEEK ENDING JULY 25, 2021

STATIONS	TEMPERATURE				GROWING DEGREE HOURS AT 60°F BASE		RAIN DAYS	PRECIPITATION ¹			
	Average for Week Ending Jul 25, 2021	Departure from Normal ²	High	Low	This Year	Normal Year ²	This Season	This Week	This Season	Normal Season ²	Normal Year ²
					Jan 1 - Jul 25, 2021	Jan 1 - Jul 25, 2021	Oct 1 - Jul 25, 2021	Week Ending Jul 25, 2021	Oct 1 - Jul 25, 2021	Oct 1 - Jul 25	Oct 1 - Sept 30
	-- Degrees Fahrenheit --				-- Number --		-- Days ³ --	-- Inches of Precipitation --			
North Coast											
Eureka WFO	57	-1	64	48	17	0	102	0.00	24.39	39.40	40.53
Ukiah	79	4	105	56	1143	678	51	0.00	13.47	36.80	37.61
Santa Rosa	66	-1	89	46	529	419	44	0.00	12.87	35.85	36.51
Napa State Hospital	65	0	79	49	418	302	41	0.00	7.48	20.04	20.52
Central Coast											
San Francisco	62	-2	75	53	376	191	40	0.00	7.84	20.44	20.79
San Jose	68	-3	83	55	598	701	33	0.00	5.33	14.67	15.02
Salinas	62	-1	70	55	265	160	38	0.00	5.81	12.63	12.91
Monterey	63	3	73	56	218	31	39	0.00	7.57	15.88	16.23
Paso Robles	76	2	103	54	1058	743	22	0.00	6.74	12.45	12.87
Sacramento Valley											
Redding	85	2	108	65	1897	1305	51	0.00	13.81	33.78	34.80
Red Bluff	84	2	107	64	1888	1306	46	0.00	9.23	23.85	24.63
Willows	N/A	N/A	N/A	N/A	N/A	N/A	N/A	N/A	N/A	N/A	N/A
Oroville	84	5	105	63	1788	1228	38	0.00	8.77	30.72	31.72
Marysville	81	3	103	56	1508	1106	36	0.00	7.14	22.16	22.88
Sacramento	80	4	100	59	1398	1012	33	0.00	6.68	20.81	21.35
San Joaquin Valley											
Stockton	79	2	100	59	1169	1049	28	0.00	7.89	13.76	14.14
Modesto	81	1	101	62	1377	1313	25	0.00	7.13	12.83	13.19
Merced Macready	83	5	104	62	1531	1132	29	0.00	7.01	12.19	12.59
Madera	83	4	105	60	1529	1196	19	0.00	1.78	11.75	12.10
Fresno	89	5	106	70	2060	1521	26	0.00	6.59	11.32	11.57
Lemoore	85	6	107	61	1693	1214	22	0.00	4.30	7.71	7.95
Visalia	83	2	99	67	1824	1330	26	0.00	5.15	10.77	10.99
Bakersfield	89	4	105	74	2200	1576	20	0.00	2.78	6.35	6.51
Cascade Sierra											
Alturas	69	2	96	40	570	193	60	0.00	5.84	13.19	14.22
Mount Shasta	74	5	97	49	763	267	68	0.00	18.52	42.14	43.48
Blue Canyon	75	5	85	65	779	315	65	0.00	30.95	63.30	65.00
Yosemite Valley	N/A	N/A	N/A	N/A	N/A	N/A	N/A	N/A	N/A	N/A	N/A
South Coast											
Santa Maria	63	-1	79	53	265	121	25	0.00	6.89	13.79	14.05
Santa Barbara	67	1	79	58	412	250	17	0.00	7.32	17.38	17.89
Oxnard	68	2	78	61	480	279	13	0.00	2.82	14.37	14.71
Riverside	81	2	99	65	1541	1210	14	0.00	4.38	12.05	12.50
Los Angeles	70	1	78	64	657	526	13	0.00	5.00	12.55	12.92
San Diego	75	4	84	69	980	669	30	0.00	4.52	10.16	10.42
Southeast Interior											
Bishop	82	4	104	58	1338	918	6	0.00	1.63	4.83	5.21
Daggett	93	4	108	77	2638	2040	12	0.06	0.70	3.47	4.08
Lancaster	86	3	104	67	1909	1359	13	0.03	1.36	7.12	7.43
Thermal	94	3	114	78	3152	2591	7	0.00	0.35	2.74	3.22
Blythe	97	2	113	81	3323	2897	7	0.10	1.04	2.80	3.85
Imperial	96	3	113	84	3031	2692	1	0.00	0.69	2.60	3.46

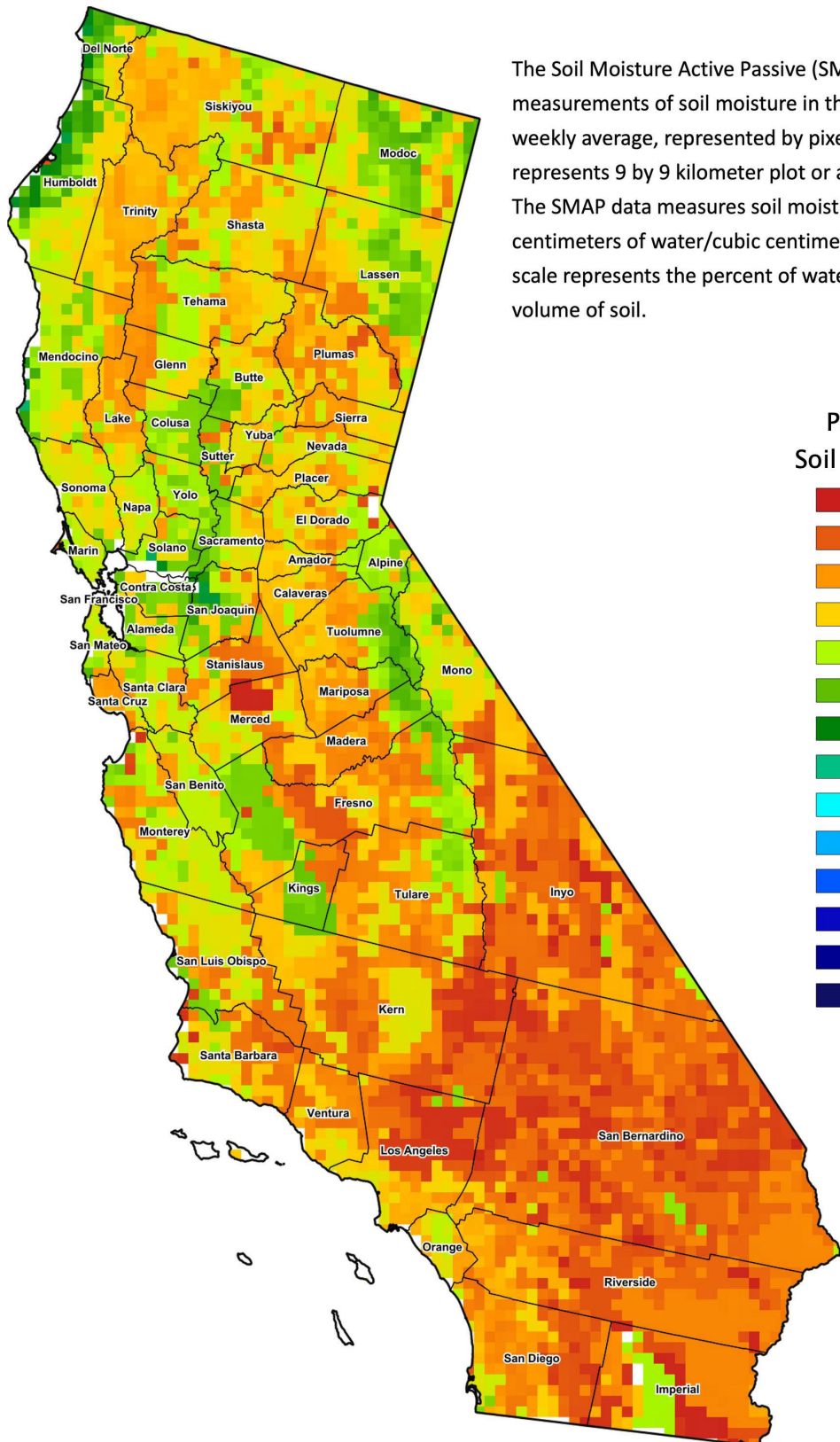
¹ Rain or melted snow/ice.

² Normal periods 1980-2010 used in departure from normal calculations.

³ Total number of days with precipitation events this season.

Data retrieved from NOAA and NWS. Calculated by USDA NASS.

All rights reserved.



The Soil Moisture Active Passive (SMAP) provides measurements of soil moisture in the root zone as a weekly average, represented by pixels. Each pixel represents 9 by 9 kilometer plot or about 20,000 acres. The SMAP data measures soil moisture in cubic centimeters of water/cubic centimeters of soil. The scale represents the percent of water in a given volume of soil.

Percent Soil Moisture

- 0%
- 5%
- 10%
- 15%
- 20%
- 25%
- 30%
- 35%
- 40%
- 45%
- 50%
- 55%
- 60%
- >65%