



# California Crop Weather

Cooperating with the California Department of Food and Agriculture  
Pacific Region • P.O. Box 1258 • Sacramento, CA 95812 • (916) 738-6600 • (855) 270-2722 FAX • [www.nass.usda.gov/ca](http://www.nass.usda.gov/ca)

**WEEK ENDING: October 31, 2021**  
**RELEASED: November 1, 2021**

**FREQUENCY: Weekly**  
**VOL. 42 NO. 31**

## WEATHER

Temperature lows for California ranged from the low 30s to 50s in the mountains, low 30s to low 60s in the desert, low 40s to high 50s in the valley, and mid 40s to low 60s along the coast. Temperature highs for the state ranged from the high 30s to low 70s in the mountains, mid 50s to high 70s in the valley, high 50s to mid 90s along the coast, and high 50s to mid 90s in the desert.

## FIELD CROPS

Across the state, groundwork continued in preparation for fall and winter plantings. In Central and Northern California, some **alfalfa** hay was damaged by rain. **Corn** and **sorghum** silage chopping was near completion. In the Sacramento Valley, **rice** harvest was almost complete. **Winter wheat** was being planted. In the San Joaquin Valley, Pima and Upland **cotton** was harvested. Modules were trucked to gin yards and ginning was ongoing. In Stanislaus County, winter wheat and fall seeded **oats** were growing well. In Tulare County, most fields were fallow, but a few silage and alfalfa fields remained to be harvested. In the Imperial Valley, alfalfa hay quality was good due to cooler weather.

## FRUIT CROPS

**Prune**, **pear**, and **nectarine** harvests continued to wind down for the season. Late-variety **peach**, **plum**, and **kiwifruit** harvests continued. **Pomegranates** were splitting due to heavy rains. **Persimmon** harvest continued. Valencia **orange**, **grapefruit**, **lemon**, **lime**, and table **grape** harvests were well underway. Navel orange and **mandarin** harvest has begun. **Olives** were being harvested in large quantities.

## NUT CROPS

Orchard preparation for the upcoming crop year was ongoing. Some **almond** orchards were irrigated. **Walnut** harvest reached over 85% complete, but recent rainfall delayed harvest activities. **Pistachio** harvest continued.

## VEGETABLE CROPS

Across the state, **winter squash** was harvested. In San Mateo County, **potatoes**, **eggplant**, **tomatoes**, and **leeks** were harvested. In Stanislaus County, **cantaloupe** harvest was almost complete, but the final harvest was delayed due to muddy field conditions. In Tulare County, **pumpkins** were harvested and sold at roadside stands. Some heirloom tomatoes, **zucchini**, butternut squash, **okra**, and serrano **peppers** were harvested. In Ventura County, **radishes**, leeks, **kale**, and **cilantro** were harvested.

## LIVESTOCK

Rains stimulated range and non-irrigated pasture recovery. Greening hillsides were observed across the north state. Irrigated pasture remained in good to excellent condition. Supplemental feeding of cattle was ongoing. Fall calving and lambing season was underway. Sheep grazed on retired cropland, harvested grain fields, and some alfalfa fields. Beekeepers provided supplemental pollen and continued preparing hives for overwintering.

**NOTICE:** USDA NASS will be changing the base temperature used to calculate growing degree days (found in the table below) from 60 °F to 50 °F. This change will occur in April 2022 with the start of the 2022 California Crop Weather (Crop Progress & Condition) publications.

CALIFORNIA CROP WEATHER – WEEK ENDING OCTOBER 31, 2021											
STATIONS	TEMPERATURE				GROWING DEGREE DAYS <sup>1</sup> AT 60 °F BASE		RAIN DAYS	PRECIPITATION <sup>2</sup>			
	Average for Week Ending Oct 31, 2021	Departure from Normal <sup>3</sup>	High	Low	This Year	Normal Year <sup>3</sup>	This Season	This Week	This Season	Normal Season <sup>3</sup>	Normal Year <sup>3</sup>
					Jan 1 - Oct 31, 2021	Jan 1 - Oct 31, 2021	Oct 1 - Oct 31, 2021	Week Ending Oct 31, 2021	Oct 1 - Oct 31, 2021	Oct 1 - Oct 31	Oct 1 - Sept 30
-- Degrees Fahrenheit --				-- Number --		-- Days <sup>4</sup> --	-- Inches of Precipitation --				
<b>North Coast</b>											
Eureka WFO	56	3	65	47	34	0	15	0.44	4.03	2.24	40.53
Ukiah	60	3	81	47	2301	1492	10	0.17	7.18	2.16	37.61
Santa Rosa	59	1	81	48	1099	957	11	0.48	10.73	2.03	36.51
Napa State Hospital	60	4	76	49	903	698	9	0.31	6.73	0.97	20.52
<b>Central Coast</b>											
San Francisco	62	2	75	54	854	589	7	0.34	5.86	0.95	20.79
San Jose	62	0	79	49	1465	1546	4	0.53	2.17	0.78	15.02
Salinas	65	6	85	47	808	515	6	0.76	1.62	0.58	12.91
Monterey	61	4	82	50	671	148	6	1.13	2.34	0.93	16.23
Paso Robles	61	3	86	44	2142	1623	4	1.54	1.57	0.62	12.87
<b>Sacramento Valley</b>											
Redding	60	2	79	48	3393	2642	11	0.35	5.73	2.10	34.80
Red Bluff	60	0	75	47	3394	2663	9	0.18	3.97	1.21	24.63
Willows	61	1	77	49	3295	2387	7	1.24	4.32	1.17	23.14
Oroville	62	2	75	52	3254	2455	9	0.18	6.64	2.02	31.72
Marysville	61	1	74	50	2807	2206	1	0.00	0.09	1.48	22.88
Sacramento	61	2	73	50	2616	2053	7	0.15	4.92	1.03	21.35
<b>San Joaquin Valley</b>											
Stockton	59	-1	75	45	2265	2167	6	0.82	3.86	0.82	14.14
Modesto	60	-2	74	45	2609	2634	5	0.97	2.80	0.68	13.19
Merced Macready	61	2	79	48	2926	2254	3	1.57	1.73	0.81	12.59
Madera	61	1	77	44	2909	2389	3	0.51	0.57	0.88	12.10
Fresno	62	0	78	47	3827	3060	3	0.86	1.27	0.63	11.57
Lemoore	60	1	79	42	3217	2409	2	0.51	0.71	0.49	7.95
Visalia	60	-1	77	41	3195	2672	4	1.45	1.54	0.61	10.99
Bakersfield	62	0	78	49	4020	3197	2	0.91	0.94	0.30	6.51
<b>Cascade Sierra</b>											
Alturas	46	3	69	31	897	401	10	0.31	1.87	1.01	14.22
Mount Shasta	49	2	68	37	1344	585	11	0.51	6.20	2.28	43.48
Blue Canyon	48	-3	67	32	1572	800	11	2.12	18.20	3.87	65.00
Yosemite Valley	51	-1	66	30	1249	1260	10	4.53	7.45	2.76	42.02
<b>South Coast</b>											
Santa Maria	62	3	86	45	625	423	2	1.28	1.29	0.60	14.05
Santa Barbara	61	1	87	44	848	701	5	0.96	1.19	0.81	17.89
Oxnard	63	2	94	50	1023	772	5	0.68	0.83	0.78	14.71
Riverside	67	2	91	48	3068	2719	3	0.08	0.29	0.28	12.50
Los Angeles	64	0	86	52	1474	1376	5	0.39	0.46	0.56	12.92
San Diego	66	1	85	54	2111	1661	4	0.21	1.01	0.57	10.42
<b>Southeast Interior</b>											
Bishop	55	3	78	31	2379	1761	1	0.65	0.65	0.30	5.21
Daggett	65	1	86	45	4706	3974	1	0.26	0.26	0.18	4.08
Lancaster	59	1	82	36	3380	2689	1	0.28	0.28	0.44	7.43
Thermal	69	0	94	45	5544	4857	1	0.00	0.01	0.23	3.22
Imperial	73	3	92	52	5576	5172	1	0.00	0.02	0.33	3.46

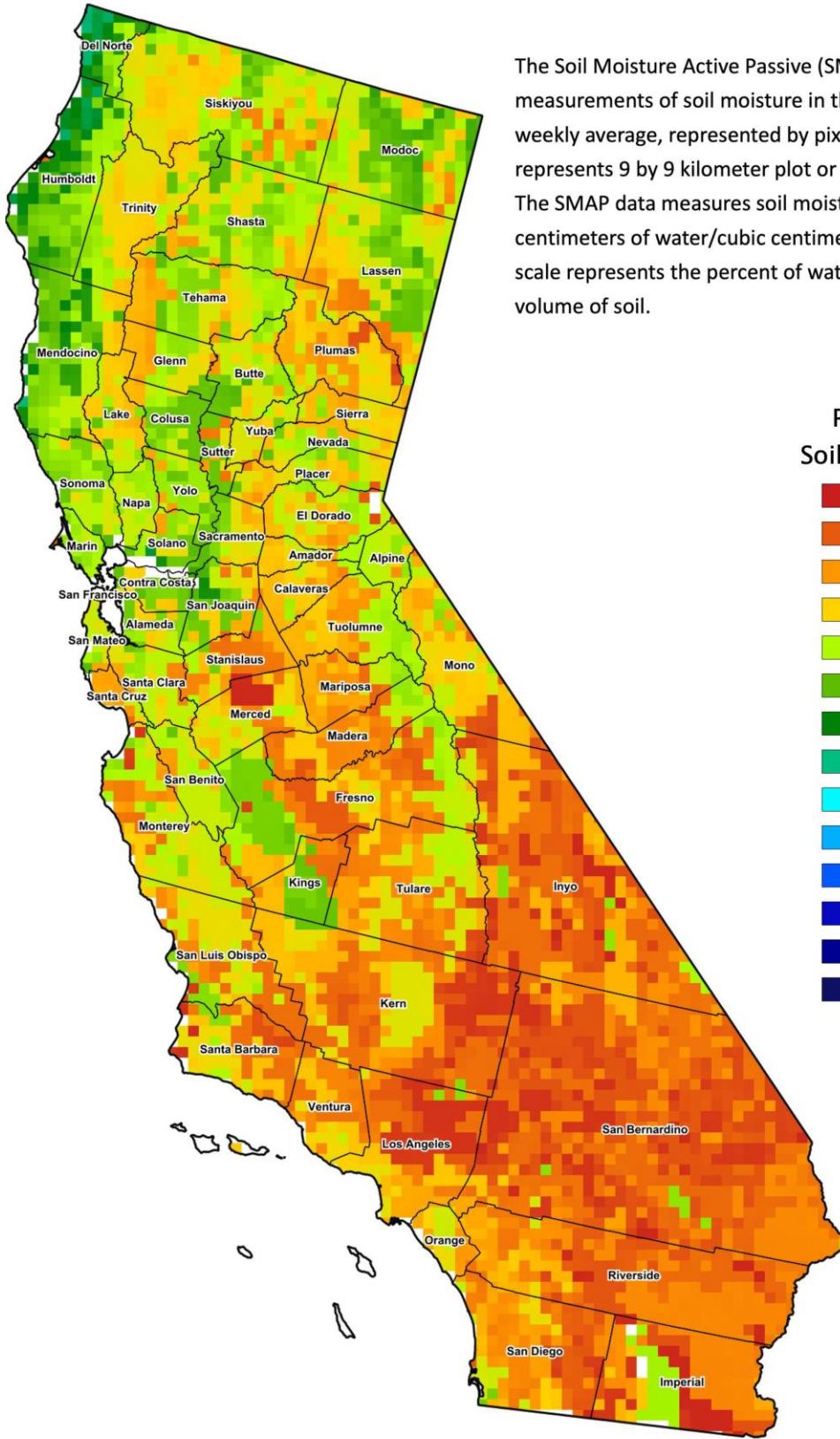
<sup>1</sup> Previously labeled as growing degree hours. The column title was corrected in the Sept 27, 2021 report.

<sup>2</sup> Rain or melted snow/ice.

<sup>3</sup> Normal periods 1980-2010 used in departure from normal calculations.

<sup>4</sup> Total number of days with precipitation events this season.

Data retrieved from NOAA and NWS. Calculated by USDA NASS.  
All rights reserved.



The Soil Moisture Active Passive (SMAP) provides measurements of soil moisture in the root zone as a weekly average, represented by pixels. Each pixel represents 9 by 9 kilometer plot or about 20,000 acres. The SMAP data measures soil moisture in cubic centimeters of water/cubic centimeters of soil. The scale represents the percent of water in a given volume of soil.

