



California Crop Progress & Condition

Cooperating with the California Department of Food and Agriculture
Pacific Region • 650 Capitol Mall, Suite 6-100 • Sacramento, CA 95814 • (916) 738-6600 • (855) 270-2722 FAX •
www.nass.usda.gov/ca

WEEK ENDING: July 23, 2023
RELEASED: July 24, 2023

FREQUENCY: Weekly
VOL. 44 NO. 17

WEATHER

Average low temperatures for California ranged from 31 to 72 in the mountains, 50 to 72 along the coast, 55 to 84 in the Central Valley, and 61 to 92 in the desert. Average high temperatures for the state ranged from 47 to 96 in the mountains, 62 to 107 along the coast, 94 to 112 in the Central Valley, and 100 to 120 in the desert. From the California Department of Water Resources as of July 21, snowpack water content was 0.00 inches in the Northern Sierra, 0.50 inches in the Central Sierra, and 0.40 inches in the Southern Sierra.

FIELD CROPS

In the Sacramento Valley, **rice** herbicide application was complete. **Wheat** continued to be harvested. **Safflower** planting began. In Stanislaus County, silage **corn** fields continued to emerge. **Alfalfa** was harvested for silage and dried for **hay**. Silage corn and **sudan grass** were sprayed for weeds. In the San Joaquin Valley, cotton crops continued to bloom and boll-setting advanced. Producers continued to treat for lygus. In Tulare County, high temperatures necessitated increased irrigation. Harvested grain fields were fertilized, tilled, and planted with summer silage crops like corn and **sorghum**. Cotton and corn silage fields continued to develop and were treated for weeds. Alfalfa was cut, raked, and baled.

FRUIT CROPS

Grape vineyards were thinned to allow for additional sunlight exposure. Grape varieties were in different stages of development. Stone fruit harvest continued as **apricots**, **nectarines**, **plums**, and **peaches** were harvested. Late stone fruit varieties continued to develop as field crews thinned trees. Some growers placed reflective tarps on orchard floors to improve color in developing fruit. Valencia **oranges**, **lemons**, and **grapefruit** continued to be harvested. Some orange trees were topped. **Kiwi** vineyards were tied and irrigated. **Pomegranates** continued to develop with fruit setting. **Persimmons** were in various stages of development. **Apples** continued to develop. **Blueberries** were harvested. **Olive** trees were trimmed. **Strawberry** harvest continued.

NUT CROPS

The **almond** crop continued to develop with irrigation. Hull split was widespread across the state. Some growers began orchard floor cleanup to prepare for harvest. **Walnuts** and **pecans** continued to mature. **Pistachio** meat fill continued. Pest and disease pressures increased. Some walnut growers started codling moth sprays and watched for mites.

VEGETABLE CROPS

Cherry **tomato** and heirloom tomato harvest progressed at a good pace in the Capay Valley. Stanislaus County **sweet potatoes**, **pumpkins**, and tomatoes continued to grow well. Honeydew harvest began. White **onions** had irrigation lines removed before harvest. Some early **garlic** was placed in rows in the fields or bins for drying, while some was sent to processors. In Tulare County, some certified producers continued to sell early summer vegetables such as **sweet corn**, **squash**, onions, **cucumbers**, **peppers**, and tomatoes. **Watermelon**, honeydew, and **cantaloupe** fields were harvested and sold at local fruit stands. Processing tomatoes continued to develop as the fruit ripened. Tomato plants were irrigated and treated for pests.

LIVESTOCK

Non-irrigated pasture quality continued to deteriorate as temperatures reached triple digits. Foothill rangeland and non-irrigated pasture were reported to be in good to mostly fair condition, while irrigated pasture remained in good to excellent condition. Cattle grazed primarily on low and mid-elevation range. Bees were active in squash and melon fields. Sheep grazed on fallow fields and retired farmland.

CALIFORNIA CROP WEATHER – WEEK ENDING JULY 23, 2023

STATIONS	TEMPERATURE				GROWING DEGREE DAYS ¹ AT 50 °F BASE ²		RAIN DAYS ³	PRECIPITATION ⁴			
	Average for Week Ending Jul 23, 2023	Departure from Normal ⁵	High	Low	This Year	Normal Year ⁵	This Season	This Week	This Season	Normal Season ⁵	Normal Year ⁵
					Jan 1 - Jul 23, 2023	Jan 1 - Jul 23, 2023	Oct 1 - Jul 23, 2023	Week Ending Jul 23, 2023	Oct 1 - Jul 23, 2023	Oct 1 - Jul 23	Oct 1 - Sept 30
-- Degrees Fahrenheit --				-- Number --		-- Days --	-- Inches of Precipitation --				
North Coast											
Eureka WFO	59	1	66	53	561	547	120	0.00	39.59	39.50	40.61
Ukiah	81	5	104	56	1,968	1,882	83	0.00	38.73	34.61	35.07
Santa Rosa	72	4	97	50	1,509	1,594	77	0.00	42.45	33.60	34.00
Napa State Hospital	69	2	88	54	1,476	1,517	71	0.00	29.54	20.14	20.36
Central Coast											
San Francisco	65	1	78	55	1,488	1,623	73	0.00	31.40	19.53	19.77
San Jose	73	3	91	57	1,792	2,032	66	0.00	15.32	13.36	13.58
Salinas	NA	NA	NA	NA	NA	1,528	NA	NA	NA	12.50	12.66
Monterey	59	-3	70	51	922	1,376	64	0.00	23.80	16.14	16.36
Paso Robles	79	5	107	51	1,839	1,930	64	0.00	20.92	12.06	12.24
Sacramento Valley											
Redding	90	6	112	67	2,751	2,663	77	0.00	39.29	32.93	33.70
Red Bluff	89	6	111	66	2,671	2,626	73	0.00	27.06	22.87	23.25
Orland	NA	NA	NA	NA	NA	2,487	NA	NA	NA	21.06	21.52
Oroville	NA	NA	NA	NA	NA	2,627	NA	NA	NA	25.46	25.84
Marysville	85	6	106	58	2,384	2,443	58	0.00	22.76	19.91	20.21
Sacramento	83	6	106	55	2,404	2,279	63	0.00	24.66	17.81	18.10
San Joaquin Valley											
Stockton	84	5	107	59	2,293	2,578	60	0.00	23.23	13.36	13.53
Modesto	84	5	103	63	2,254	2,628	65	0.00	20.18	12.20	12.34
Merced Macready	86	7	105	63	2,395	2,489	54	0.02	19.40	11.75	11.87
Madera	86	5	108	61	2,473	2,644	51	0.00	11.11	10.76	10.86
Fresno	92	8	109	72	2,916	2,964	47	0.00	16.35	10.94	11.05
Lemoore	88	7	110	63	2,611	2,651	38	0.00	7.84	7.15	7.23
Visalia	88	7	105	71	2,721	2,635	54	0.00	15.60	10.25	10.37
Bakersfield	92	7	109	74	2,978	3,174	51	0.00	9.37	6.31	6.40
Cascade Sierra											
Alturas	72	3	96	46	1,016	839	95	0.00	15.65	10.98	11.72
Mount Shasta	74	5	96	49	1,368	960	101	0.00	45.05	36.85	37.86
Blue Canyon	77	6	88	67	1,149	961	99	0.00	90.41	61.64	62.80
Yosemite Valley	NA	NA	NA	NA	NA	1,308	NA	NA	NA	39.68	40.65
South Coast											
Santa Maria	63	-1	77	52	1,149	1,604	56	0.00	23.83	13.23	13.42
Santa Barbara	68	2	78	58	1,675	1,751	51	0.00	28.66	17.17	17.38
Oxnard	67	0	74	60	1,556	2,088	53	0.00	22.14	12.83	13.05
Riverside	84	5	103	65	2,457	3,009	51	0.00	13.35	9.21	9.48
Los Angeles	70	0	79	63	1,988	2,520	56	0.00	23.85	12.11	12.33
San Diego	71	0	78	65	2,223	2,769	57	0.00	13.88	9.64	9.87
Southeast Interior											
Bishop	84	5	107	61	1,859	1,969	39	0.13	14.53	4.63	4.87
Daggett	97	7	114	79	3,338	3,574	20	0.00	2.71	3.32	3.80
Lancaster	89	6	108	67	2,414	2,521	30	0.00	7.04	6.65	6.86
Thermal	101	9	118	83	4,214	4,505	15	0.00	1.35	2.48	2.98
Blythe	103	7	120	87	4,516	4,828	17	0.00	1.95	2.76	3.58
Imperial	NA	NA	NA	NA	NA	4,616	NA	NA	NA	2.00	2.39

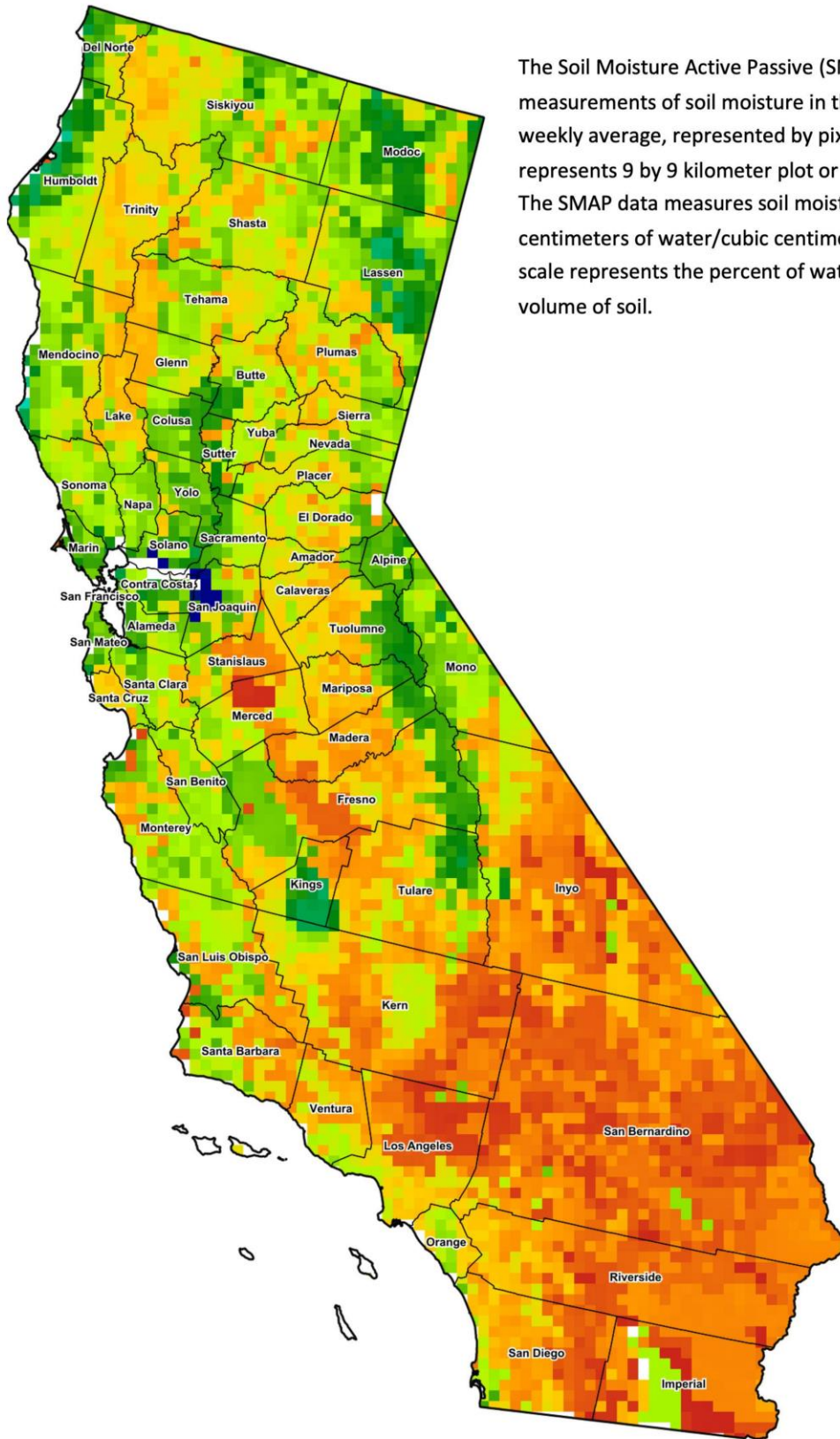
¹ Previously labeled as growing degree hours. The column title was corrected in the Sept 27, 2021 report.
² Previously calculated with 60 degree base. This calculation was changed for the 2022 and later seasons.
³ Total number of days with precipitation events this season.
⁴ Rain or melted snow/ice.
⁵ Normal periods 1990-2020 used in departure from normal calculations.

Data retrieved from NOAA and NWS. Calculated by USDA NASS.
 All rights reserved.

Reservoir Data from the California Department of Water Resources

Reservoir	Capacity	July 23, 2023			This Date Last Year	
		Storage	Percent of Capacity	Percent of Average	Storage	Percent of Capacity
		<i>Acre Feet</i>	<i>Percent</i>	<i>Percent</i>	<i>Acre Feet</i>	<i>Percent</i>
Shasta Lake	4,547,300	3,997,293	88	124	1,709,639	38
Lake Oroville	3,537,400	3,350,459	95	137	1,511,821	43
Trinity Lake	2,443,800	1,415,404	58	79	676,836	28
New Melones Reservoir	2,413,000	2,056,026	86	140	730,490	30
San Luis Reservoir	2,057,200	1,904,150	93	204	679,293	33
Don Pedro Reservoir	4,547,300	1,966,032	97	122	1,233,289	61

Source: cdec.water.ca.gov/reportapp/javareports?name=DLYHYDRO



Drought Conditions from the U.S. Drought Monitor as of 07/18/2023

Time	Percent of Land in Drought Rating						Drought Severity (DSCI)
	None	D0	D1	D2	D3	D4	
Current	74.45	19.26	6.29	0.00	0.00	0.00	32
Last Week	71.95	21.76	6.29	0.00	0.00	0.00	34
3 Months Ago	65.67	25.55	8.79	0.00	0.00	0.00	43
One Year Ago	0.00	0.22	2.31	37.66	47.07	12.74	370

The U.S. Drought Monitor is jointly produced by the National Drought Mitigation Center at the University of Nebraska-Lincoln, the United States Department of Agriculture, and the National Oceanic and Atmospheric Administration. droughtmonitor.unl.edu/CurrentMap/StateDroughtMonitor.aspx?CA