



California Crop Progress & Condition

Cooperating with the California Department of Food and Agriculture
Pacific Region • 650 Capitol Mall, Suite 6-100 • Sacramento, CA 95814 • (916) 738-6600 • (855) 270-2722 FAX •
www.nass.usda.gov/ca

WEEK ENDING: July 30, 2023
RELEASED: July 31, 2023

FREQUENCY: Weekly
VOL. 44 NO. 18

WEATHER

Average low temperatures for California ranged from 31 to 65 in the mountains, 47 to 71 along the coast, 57 to 93 in the desert, and 59 to 78 in the Central Valley. Average high temperatures for the state ranged from 47 to 90 in the mountains, 64 to 105 along the coast, 91 to 107 in the Central Valley, and 98 to 118 in the desert. From the California Department of Water Resources as of July 31, snowpack water content was 0.00 inches in the Northern Sierra, Central Sierra, and Southern Sierra.

FIELD CROPS

Across the Central Valley, **alfalfa** was harvested for silage and dried for hay. High temperatures caused a great need for increased irrigation. In the Sacramento Valley, **wheat** was harvested for hay and silage. **Safflower** was planted. In the San Joaquin Valley, **cotton** was blooming. Insect pressure impacted boll retention. Cotton producers continued to treat for lygus. The cotton crop remains behind schedule. **Corn** and **Sudan grass** fields were sprayed for weeds. Corn was sprayed for cutworm. Some corn for silage was prepared for harvest. Harvested grain fields were prepared and planted with corn and **sorghum** for silage.

FRUIT CROPS

Table **grapes** were harvested. Vineyards continued to be thinned to allow for additional sunlight exposure. **Nectarines**, **peaches**, and **plums** continued to be harvested. Some growers placed reflective tarps on orchard floors to improve color in developing fruit. Late stone fruit varieties continued to develop as field crews thinned trees. **Kiwifruit** vineyards were tied and irrigated. **Apples**, **pears**, **pomegranates**, and **persimmons** continued to develop. Some apples and pears were harvested. **Olive** trees were trimmed. **Blueberries** were harvested. Some blueberry fields with older plants were removed. **Strawberry** production was slowing down. Valencia **oranges**, **lemons**, **grapefruit**, and **mandarins** were picked and packed. Some orange trees were topped and skirted.

NUT CROPS

The **almond** crop continued to develop. Hull split was widespread across the state. Some growers began orchard floor cleanup to prepare for harvest. **Walnuts** and **pecans** continued to mature. **Pistachio** meat fill continued. Some walnut growers started codling moth sprays and watched for mites.

VEGETABLE CROPS

In the Sacramento Valley, processing **tomatoes** were vine-trained to reduce damage during harvest. **Cantaloupe** harvest finished in the Imperial Valley and transitioned to the San Joaquin Valley. **Watermelon** and **honeydew** harvests continued with excellent quality and Brix levels. In Stanislaus County, **sweet potatoes** were sprayed for soil borne disease. **Garlic** continued to dry in the field. **Pumpkins** and tomatoes continued to develop. In Tulare County, **sweet corn**, **summer squash**, **cucumbers**, **peppers**, and tomatoes were sold at local markets. **Carrot** harvest was in full swing in Kern County. **Broccoli**, **celery**, and **cauliflower** harvests continued in the Salinas Valley, and **brussel sprout** harvest began. Very warm temperatures caused defects in **lettuce** crops. Squash harvest continued along the Central Coast. **Bell pepper** harvest finished in the Coachella Valley.

LIVESTOCK

Non-irrigated pasture quality deterioration continued. Foothill rangeland and non-irrigated pasture were reported to be in good to mostly fair condition. Irrigated pasture remained in good to excellent condition. Cattle grazed primarily on low and mid-elevation range. Bees were active in squash and melon fields. Sheep grazed on fallow fields and retired farmland.

CALIFORNIA CROP WEATHER – WEEK ENDING JULY 30, 2023

STATIONS	TEMPERATURE				GROWING DEGREE DAYS ¹ AT 50 °F BASE ²		RAIN DAYS ³	PRECIPITATION ⁴			
	Average for Week Ending Jul 30, 2023	Departure from Normal ⁵	High	Low	This Year	Normal Year ⁵	This Season	This Week	This Season	Normal Season ⁵	Normal Year ⁵
					Jan 1 - Jul 30, 2023	Jan 1 - Jul 30, 2023	Oct 1 - Jul 30, 2023	Week Ending Jul 30, 2023	Oct 1 - Jul 30, 2023	Oct 1 - Jul 30	Oct 1 - Sept 30
	-- Degrees Fahrenheit --				-- Number --		-- Days --	-- Inches of Precipitation --			
North Coast											
Eureka WFO	60	2	67	53	632	610	116	0.00	39.45	39.54	40.61
Ukiah	75	-1	98	51	2,130	2,064	83	0.00	38.73	34.61	35.07
Santa Rosa	69	1	94	47	1,643	1,720	76	0.00	42.43	33.60	34.00
Napa State Hospital	67	0	86	51	1,591	1,636	70	0.00	29.53	20.14	20.36
Central Coast											
San Francisco	64	0	76	56	1,574	1,728	72	0.00	31.39	19.53	19.77
San Jose	69	-1	87	55	1,914	2,172	65	0.00	15.23	13.36	13.58
Salinas	NA	NA	NA	NA	NA	1,626	NA	NA	NA	12.50	12.66
Monterey	61	-1	70	52	994	1,460	63	0.00	23.65	16.15	16.36
Paso Robles	80	6	105	51	2,065	2,101	63	0.00	20.91	12.08	12.24
Sacramento Valley											
Redding	83	-1	101	64	2,985	2,902	77	0.00	39.29	32.94	33.70
Red Bluff	82	0	100	64	2,895	2,855	73	0.00	27.06	22.88	23.25
Orland	NA	NA	NA	NA	NA	2,690	NA	NA	NA	21.07	21.52
Oroville	82	1	99	64	2,867	2,844	71	0.00	26.72	25.47	25.84
Marysville	79	0	98	59	2,587	2,646	58	0.00	22.76	19.91	20.21
Sacramento	79	3	97	60	2,606	2,468	63	0.00	24.66	17.81	18.10
San Joaquin Valley											
Stockton	79	1	100	60	2,501	2,781	60	0.00	23.23	13.36	13.53
Modesto	80	1	97	61	2,462	2,837	65	0.00	20.18	12.20	12.34
Merced Macready	81	2	100	61	2,616	2,699	54	0.00	19.40	11.75	11.87
Madera	82	2	105	60	2,702	2,861	51	0.00	11.11	10.76	10.86
Fresno	87	3	105	70	3,176	3,206	47	0.00	16.35	10.94	11.05
Lemoore	84	3	105	63	2,850	2,868	38	0.00	7.84	7.15	7.23
Visalia	83	2	104	63	2,953	2,852	54	0.00	15.60	10.25	10.37
Bakersfield	88	3	107	73	3,245	3,426	51	0.00	9.37	6.31	6.40
Cascade Sierra											
Alturas	67	-2	90	40	1,168	976	93	0.00	15.23	11.05	11.72
Mount Shasta	70	1	90	49	1,509	1,100	97	0.00	44.95	36.90	37.86
Blue Canyon	71	0	81	62	1,303	1,115	98	0.00	90.11	61.65	62.80
Yosemite Valley	NA	NA	NA	NA	NA	1,483	NA	NA	NA	39.72	40.65
South Coast											
Santa Maria	64	-1	81	53	1,251	1,709	56	0.00	23.83	13.24	13.42
Santa Barbara	71	5	82	61	1,824	1,870	51	0.00	28.66	17.17	17.38
Oxnard	70	3	82	61	1,698	2,214	53	0.00	22.14	12.84	13.05
Riverside	86	6	104	68	2,709	3,219	51	0.00	13.35	9.25	9.48
Los Angeles	72	2	82	64	2,149	2,666	56	0.00	23.85	12.12	12.33
San Diego	73	1	82	66	2,388	2,923	57	0.00	13.88	9.66	9.87
Southeast Interior											
Bishop	81	2	103	57	2,079	2,172	39	0.00	14.53	4.66	4.87
Daggett	96	6	112	79	3,660	3,861	20	0.00	2.71	3.39	3.80
Lancaster	90	7	108	68	2,698	2,757	30	0.00	7.04	6.68	6.86
Thermal	98	6	117	78	4,550	4,799	15	0.00	1.35	2.51	2.98
Blythe	102	6	118	87	4,884	5,150	17	0.00	1.95	2.83	3.58
Imperial	100	6	116	85	4,666	4,928	11	0.00	0.84	2.04	2.39

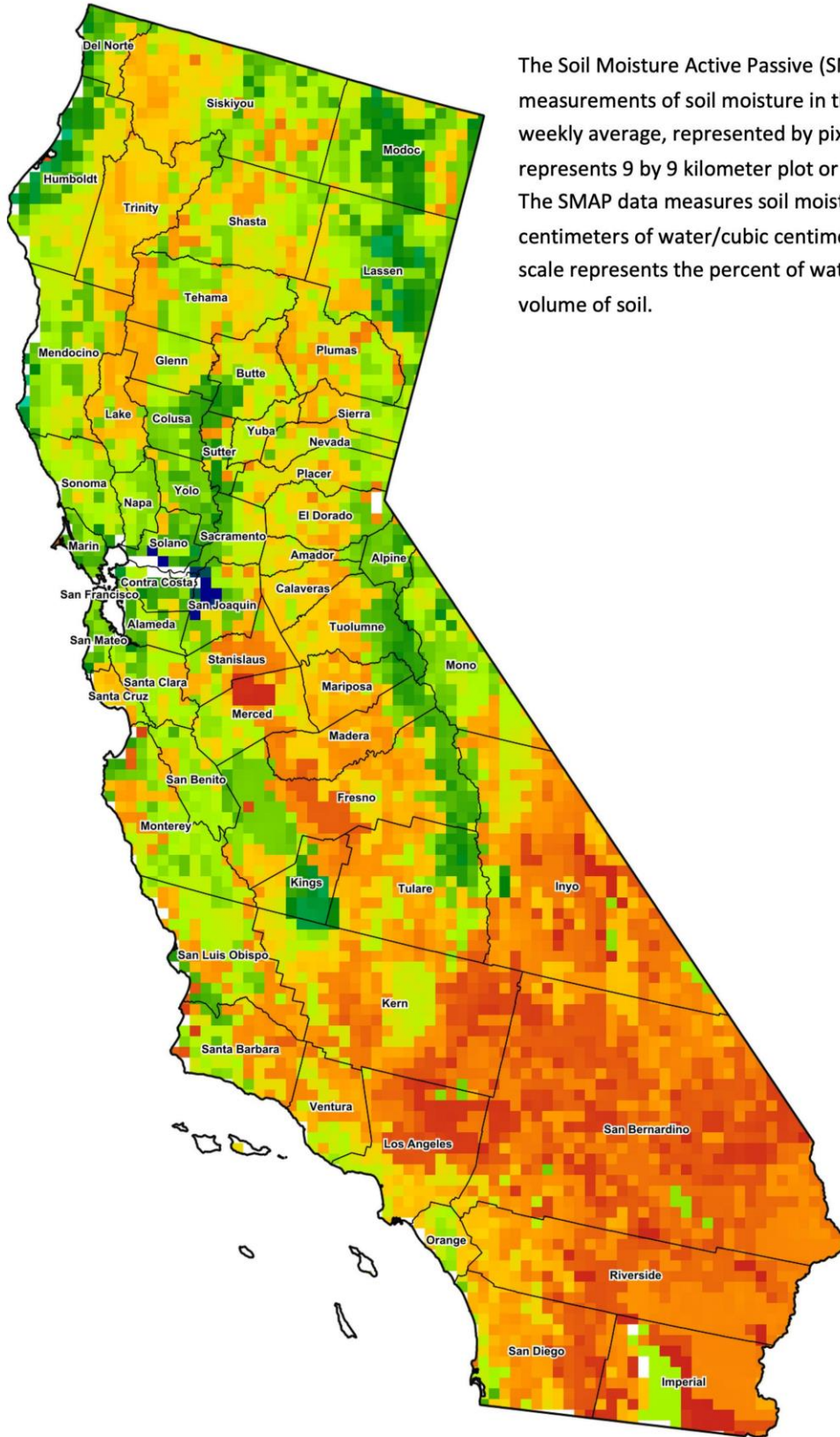
- ¹ Previously labeled as growing degree hours. The column title was corrected in the Sept 27, 2021 report.
- ² Previously calculated with 60 degree base. This calculation was changed for the 2022 and later seasons.
- ³ Total number of days with precipitation events this season.
- ⁴ Rain or melted snow/ice.
- ⁵ Normal periods 1990-2020 used in departure from normal calculations.

Data retrieved from NOAA and NWS. Calculated by USDA NASS.
All rights reserved.

Reservoir Data from the California Department of Water Resources

Reservoir	Capacity	July 30, 2023			This Date Last Year	
		Storage	Percent of Capacity	Percent of Average	Storage	Percent of Capacity
		<i>Acre Feet</i>	<i>Percent</i>	<i>Percent</i>	<i>Acre Feet</i>	<i>Percent</i>
Shasta Lake	4,547,300	3,904,375	86	125	1,686,117	37
Lake Oroville	3,537,400	3,251,195	92	138	1,459,556	41
Trinity Lake	2,443,800	1,405,157	57	80	665,575	27
New Melones Reservoir	2,413,000	2,035,948	85	140	713,303	30
San Luis Reservoir	2,057,200	1,865,747	91	211	649,040	32
Don Pedro Reservoir	4,547,300	1,957,953	96	123	1,209,539	60

Source: cdec.water.ca.gov/reportapp/javareports?name=DLYHYDRO



Drought Conditions from the U.S. Drought Monitor as of 07/25/2023

Time	Percent of Land in Drought Rating						Drought Severity (DSCI)
	None	D0	D1	D2	D3	D4	
Current	74.43	19.28	6.29	0.00	0.00	0.00	32
Last Week	74.45	19.26	6.29	0.00	0.00	0.00	32
3 Months Ago	68.04	23.98	7.98	0.00	0.00	0.00	40
One Year Ago	0.00	0.22	2.31	37.66	47.07	12.74	370

The U.S. Drought Monitor is jointly produced by the National Drought Mitigation Center at the University of Nebraska-Lincoln, the United States Department of Agriculture, and the National Oceanic and Atmospheric Administration. droughtmonitor.unl.edu/CurrentMap/StateDroughtMonitor.aspx?CA