



California Crop Progress & Condition

Cooperating with the California Department of Food and Agriculture
Pacific Region • 650 Capitol Mall, Suite 6-100 • Sacramento, CA 95814 • (916) 738-6600 • (855) 270-2722 FAX •
www.nass.usda.gov/ca

WEEK ENDING: August 20, 2023
RELEASED: August 21, 2023

FREQUENCY: Weekly
VOL. 44 NO. 21

WEATHER

Average low temperatures for California ranged from 63 to 82 in the Central Valley, 31 to 70 in the mountains, 51 to 73 along the coast, and 51 to 93 in the desert. Average high temperatures for the state ranged from 47 to 102 in the mountains, 63 to 109 along the coast, 63 to 114 in the desert, and 75 to 113 in the Central Valley.

FIELD CROPS

High temperatures continued to cause a great need for irrigation. In Siskiyou County, **alfalfa** was cut, dried, and baled. In Sutter County, growers prepared to begin **sunflower** harvest. In the Sacramento Valley, **rice** development continued. **Sunflower** harvest was underway. In Stanislaus County, silage **corn** was harvested and sprayed for weeds. Alfalfa was harvested. In the San Joaquin Valley, the **cotton** crop made good progress as bolls were cracking open. Cotton producers scouted for pests and prepared their equipment for the upcoming harvest. In Tulare County, summer row crop season was in full swing. Corn for silage was chopped. Alfalfa was cut, raked, and baled.

FRUIT CROPS

Grapes were in many stages of development. Crews thinned vineyards to allow for additional sunlight exposure, better bunch formation, and improved color. The table grape harvest was ramping up as growers were concerned about the upcoming storm and its impact on quality. Development of wine grapes continued but was delayed due to the unseasonably cool spring and early summer. Wine grape vineyards were sprayed for weeds. **Cherry** orchards were pruned. Stone fruit harvest continued. Some growers placed reflective tarps on orchard floors to improve color in developing fruit. **Kiwifruit** vineyards continued leafing out and were tied and irrigated. **Pomegranates** and **persimmons** continued to develop. Gala **apples** were harvested. **Pear** harvest was in full swing with Bartlett and Bosc varieties picked. **Olive** trees were trimmed. Some older **blueberry** fields were replaced with newer varieties. **Strawberry** growers were wrapping up their peak season. New crop plantings occurred in the Santa Maria area. Valencia and Navel **oranges**, **grapefruit**, and **mandarins** were picked and packed. **Lemon** harvest was wrapping up. Some orange trees were topped and skirted.

NUT CROPS

Almond harvest continued amid concerns about the upcoming storm. Orchard floors were cleaned and trees were shaken. **Walnuts**, **pistachios**, and **pecans** continued to mature. Walnut orchards were sprayed for weeds.

VEGETABLE CROPS

Celery, **onion**, and **garlic** harvests continued. In Sutter County, processing **tomato** and melon harvests began. Tomato and **watermelon** harvests continued in the Capay Valley. Stanislaus County **sweet potato**, watermelon, **cantaloupe**, **honeydew**, and processing tomato harvests were ongoing. In San Joaquin County, **eggplant** harvest began. In Tulare County, growers continued to sell summer vegetables such as **sweet corn**, **onions**, **squash**, **cucumbers**, **peppers**, and tomatoes. **Broccoli**, **cauliflower**, **zucchini**, **lettuce**, squash, and **brussel sprout** harvests continued along the Central Coast. High temperatures caused concern for lettuce crop quality. Lettuce beds were prepared in Imperial County.

LIVESTOCK

Foothill rangeland and non-irrigated pasture was remained in fair to good condition as high humidity across much of the state slowed desiccation. Irrigated pasture was in good to excellent condition. Cattle grazed primarily on low and mid-elevation range. Bees were active in squash and melon fields. Sheep grazed on fallow fields and retired farmland.

CALIFORNIA CROP WEATHER – WEEK ENDING AUGUST 20, 2023

STATIONS	TEMPERATURE				GROWING DEGREE DAYS ¹ AT 50 °F BASE ²		RAIN DAYS ³	PRECIPITATION ⁴			
	Average for Week Ending Aug 20, 2023	Departure from Normal ⁵	High	Low	This Year	Normal Year ⁵	This Season	This Week	This Season	Normal Season ⁵	Normal Year ⁵
					Jan 1 - Aug 20, 2023	Jan 1 - Aug 20, 2023	Oct 1 - Aug 20, 2023	Week Ending Aug 20, 2023	Oct 1 - Aug 20, 2023	Oct 1 - Aug 20	Oct 1 - Sept 30
	-- Degrees Fahrenheit --				-- Number --		-- Days --	-- Inches of Precipitation --			
North Coast											
Eureka WFO	61	2	73	51	863	799	124	0.02	39.65	39.64	40.61
Ukiah	81	7	109	60	2,741	2,595	83	0.00	38.73	34.65	35.07
Santa Rosa	71	3	91	56	2,090	2,105	77	0.00	42.45	33.62	34.00
Napa State Hospital	72	5	93	58	2,020	2,011	71	0.00	29.54	20.15	20.36
Central Coast											
San Francisco	70	5	87	59	1,967	2,045	73	0.00	31.40	19.55	19.77
San Jose	76	6	93	64	2,426	2,598	66	0.00	15.32	13.39	13.58
Salinas	NA	NA	NA	NA	NA	1,923	NA	NA	NA	12.52	12.66
Monterey	66	3	77	57	1,292	1,732	65	0.00	23.81	16.16	16.36
Paso Robles	76	2	104	55	2,569	2,610	64	0.00	20.92	12.09	12.24
Sacramento Valley											
Redding	90	9	113	73	3,753	3,583	77	0.00	39.29	33.01	33.70
Red Bluff	88	8	113	71	3,636	3,507	73	0.00	27.06	22.91	23.25
Orland	NA	NA	NA	NA	NA	3,277	NA	NA	NA	21.13	21.52
Oroville	86	7	107	70	3,562	3,473	71	0.00	26.72	25.50	25.84
Marysville	79	2	108	NA	3,202	3,235	58	0.00	22.76	19.95	20.21
Sacramento	84	9	107	65	3,246	3,019	63	0.00	24.66	17.85	18.10
San Joaquin Valley											
Stockton	84	7	106	64	3,140	3,374	60	0.00	23.23	13.37	13.53
Modesto	84	6	102	66	3,106	3,439	65	0.00	20.18	12.21	12.34
Merced Macready	83	5	104	65	3,261	3,302	55	0.06	19.46	11.75	11.87
Madera	84	5	107	63	3,365	3,489	52	0.04	11.15	10.76	10.86
Fresno	88	6	108	71	3,914	3,906	49	0.11	16.46	10.94	11.05
Lemoore	85	6	107	66	3,529	3,498	41	0.26	8.12	7.15	7.23
Visalia	84	5	104	65	3,653	3,487	55	0.01	15.61	10.25	10.37
Bakersfield	88	5	109	69	3,999	4,154	52	1.08	10.45	6.31	6.40
Cascade Sierra											
Alturas	72	6	97	50	1,542	1,341	97	0.06	16.28	11.24	11.72
Mount Shasta	NA	NA	NA	NA	NA	1,490	NA	NA	NA	37.05	37.86
Blue Canyon	73	3	88	59	1,744	1,551	102	0.02	90.49	61.77	62.80
Yosemite Valley	NA	NA	NA	NA	NA	1,990	NA	NA	NA	39.76	40.65
South Coast											
Santa Maria	67	3	83	54	1,562	2,024	57	0.00	24.06	13.24	13.42
Santa Barbara	69	3	77	59	2,232	2,227	53	0.10	28.93	17.17	17.38
Oxnard	68	1	79	58	2,088	2,589	54	0.82	22.96	12.84	13.05
Riverside	82	2	105	65	3,362	3,849	54	1.83	15.24	9.27	9.48
Los Angeles	69	-2	76	63	2,586	3,107	58	1.74	25.59	12.12	12.33
San Diego	71	-2	79	66	2,861	3,399	58	1.82	15.70	9.67	9.87
Southeast Interior											
Bishop	74	-2	97	51	2,623	2,750	43	1.75	16.48	4.71	4.87
Daggett	87	-2	107	69	4,464	4,696	25	0.02	2.80	3.53	3.80
Lancaster	81	0	104	59	3,364	3,440	31	0.01	7.05	6.68	6.86
Thermal	NA	NA	NA	NA	NA	5,672	NA	NA	NA	2.57	2.98
Blythe	NA	NA	NA	NA	NA	6,110	NA	NA	NA	3.09	3.58
Imperial	93	-1	114	73	5,603	5,863	12	0.44	1.28	2.14	2.39

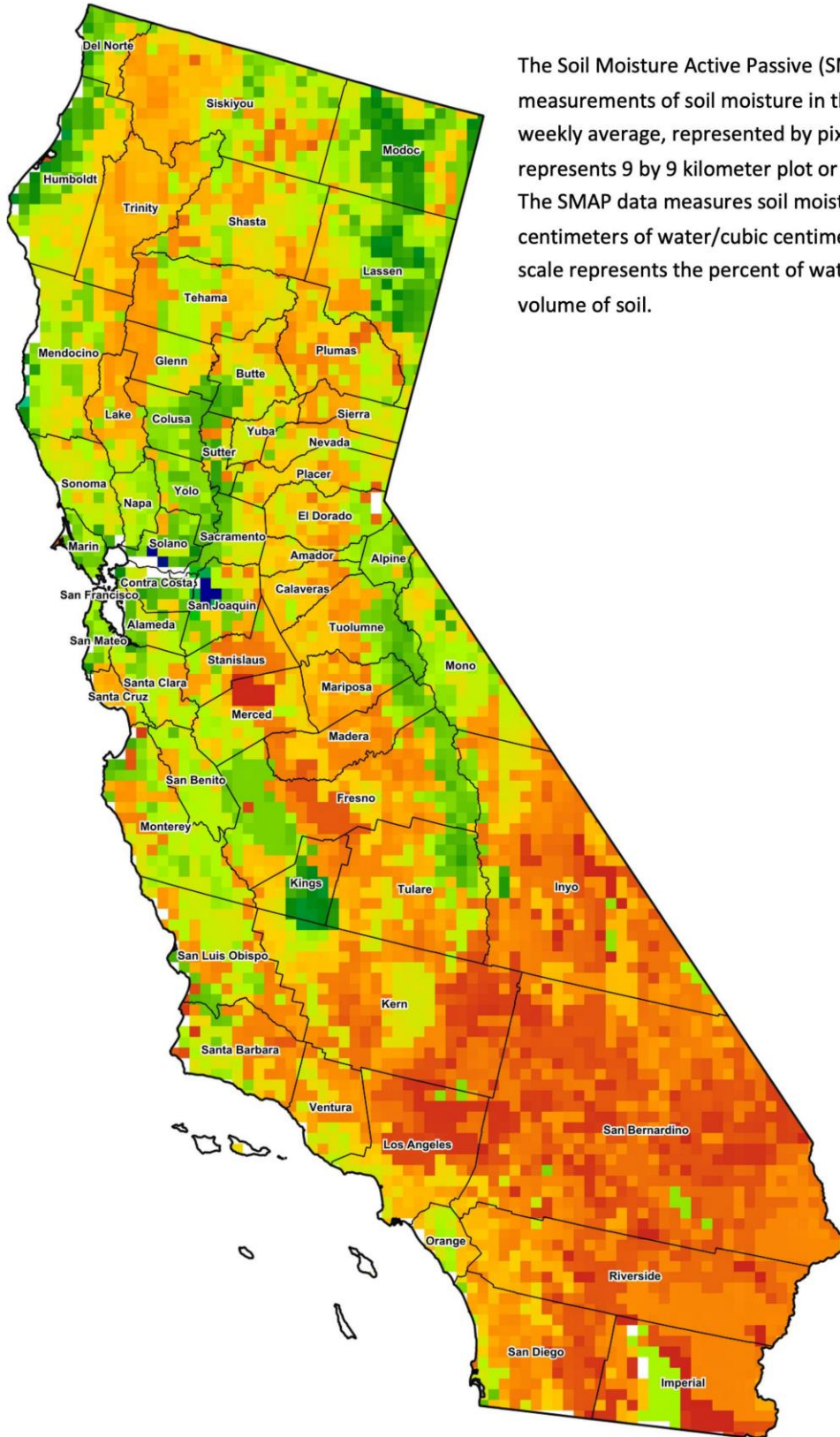
¹ Previously labeled as growing degree hours. The column title was corrected in the Sept 27, 2021 report.
² Previously calculated with 60 degree base. This calculation was changed for the 2022 and later seasons.
³ Total number of days with precipitation events this season.
⁴ Rain or melted snow/ice.
⁵ Normal periods 1990-2020 used in departure from normal calculations.

Data retrieved from NOAA and NWS. Calculated by USDA NASS.
 All rights reserved.

Reservoir Data from the California Department of Water Resources

Reservoir	Capacity	August 20, 2023			This Date Last Year	
		Storage	Percent of Capacity	Percent of Average	Storage	Percent of Capacity
		<i>Acre Feet</i>	<i>Percent</i>	<i>Percent</i>	<i>Acre Feet</i>	<i>Percent</i>
Shasta Lake	4,547,300	3,640,507	80	127	1,620,992	36
Lake Oroville	3,537,400	2,981,382	84	138	1,350,435	38
Trinity Lake	2,443,800	1,366,326	56	82	630,042	26
New Melones Reservoir	2,413,000	1,959,985	82	140	662,714	28
San Luis Reservoir	2,057,200	1,763,180	86	216	590,097	29
Don Pedro Reservoir	4,547,300	1,849,922	91	122	1,144,467	56

Source: cdec.water.ca.gov/reportapp/javareports?name=DLYHYDRO



Drought Conditions from the U.S. Drought Monitor as of 08/15/2023

Time	Percent of Land in Drought Rating						Drought Severity (DSCI)
	None	D0	D1	D2	D3	D4	
Current	74.56	18.17	7.27	0.00	0.00	0.00	33
Last Week	74.55	18.18	7.28	0.00	0.00	0.00	33
3 Months Ago	68.02	26.03	5.95	0.00	0.00	0.00	38
One Year Ago	0.00	0.24	2.24	54.36	26.59	16.57	357

The U.S. Drought Monitor is jointly produced by the National Drought Mitigation Center at the University of Nebraska-Lincoln, the United States Department of Agriculture, and the National Oceanic and Atmospheric Administration. droughtmonitor.unl.edu/CurrentMap/StateDroughtMonitor.aspx?CA