



# California Crop Progress & Condition

Cooperating with the California Department of Food and Agriculture  
Pacific Region • 650 Capitol Mall, Suite 6-100 • Sacramento, CA 95814 • (916) 738-6600 • (855) 270-2722 FAX •  
[www.nass.usda.gov/ca](http://www.nass.usda.gov/ca)

**WEEK ENDING: October 29, 2023**  
**RELEASED: October 30, 2023**

**FREQUENCY: Weekly**  
**VOL. 44 NO. 31**

## WEATHER

Average low temperatures for California ranged from 15 to 48 in the mountains, 27 to 68 in the desert, 29 to 64 along the coast, and 34 to 60 in the Central Valley. Average high temperatures for the state ranged from 46 to 72 in the mountains, 54 to 81 along the coast, 58 to 91 in the Central Valley, and 61 to 87 in the desert.

## FIELD CROPS

Across the state, **corn** continued to mature and was chopped for silage. **Alfalfa** was harvested for hay and silage. Fall ground work neared completion. In the Sacramento Valley, **rice** harvest and **wheat** and **barley** planting continued. In the Northern San Joaquin Valley, **sudan grass** was harvested and winter **oats** continued to emerge. In the Southern San Joaquin Valley, **cotton** defoliation activities advanced. Harvest was delayed briefly by rain as some fields were too wet to pick. In Tulare County, dry bean fields were cut and windrowed. Corn and alfalfa silage harvest neared completion. Alfalfa continued to be cut, raked, and baled. Cotton harvest was widespread but delayed by rain.

## FRUIT CROPS

Table and wine **grape** harvests continued. Grape production was recovering well from Hurricane Hilary. **Peach**, **pluot**, and **prune** harvests were mostly completed. **Nectarine** harvest finished. **Figs**, **apples**, **plums**, **pears**, **pomegranates**, and **kiwifruit** were harvested. **Persimmons** were reaching mature size and starting to show color. **Cherry** and **apricot** orchards were pruned and treated for nematodes. Table **olive** harvest continued. Olive trees for oil were pruned in preparation for harvest. **Strawberry** harvest was winding down. **Blackberry** harvest slowed as weather cooled. New citrus plantings gained size. Valencia **oranges** and **grapefruit** were harvested. District 2 **lemon** harvest neared completion, and District 3 lemon harvest began.

## NUT CROPS

**Pistachio** and **walnut** harvests continued. **Almond** harvest was winding down. **Pecans** continued to mature. Almond and walnut orchards were sprayed for pests and weeds.

## VEGETABLE CROPS

Across the Central Valley, **pumpkins**, **tomatoes**, **sweet corn**, **melons**, **bell peppers**, and **squash** continued to be harvested. In the Northern San Joaquin Valley, **sweet potatoes**, **onions**, **eggplant**, and **garlic** were harvested. **Honeydew** and **watermelon** harvests neared completion. In the Southern San Joaquin Valley, garlic, **carrots**, onions, **cucumbers**, melons, and **peppers** were harvested. Along the Central Coast, squash, **broccoli**, **cauliflower**, **brussel sprouts**, **celery**, **lettuce**, **kale**, and peppers were harvested. Eggplant and celery harvests continued, and bell pepper harvest began in the Coachella Valley.

## LIVESTOCK

Foothill rangeland and non-irrigated pasture lacked precipitation and remained in poor to fair condition. Irrigated pasture was in good condition. Supplemental feeding for cattle continued in the San Joaquin and Sacramento Valleys. Preparations began to bring cattle down from higher elevation range. Fall calving season was ongoing. Sheep grazed retired cropland and harvested vegetable fields. Bees continued to be moved into the state for overwintering.

**CALIFORNIA CROP WEATHER – WEEK ENDING OCTOBER 29, 2023**

STATIONS	TEMPERATURE				GROWING DEGREE DAYS <sup>1</sup> AT 50 °F BASE <sup>2</sup>		RAIN DAYS <sup>3</sup>	PRECIPITATION <sup>4</sup>			
	Average for Week Ending Oct 29, 2023	Departure from Normal <sup>5</sup>	High	Low	This Year	Normal Year <sup>5</sup>	This Season	This Week	This Season	Normal Season <sup>5</sup>	Normal Year <sup>5</sup>
					Jan 1 - Oct 29, 2023	Jan 1 - Oct 29, 2023	Oct 1 - Oct 29, 2023	Week Ending Oct 29, 2023	Oct 1 - Oct 29, 2023	Oct 1 - Oct 29	Oct 1 - Sept 30
-- Degrees Fahrenheit --				-- Number --		-- Days --	-- Inches of Precipitation --				
<b>North Coast</b>											
Eureka WFO	51	-2	72	35	1,433	1,270	8	0.16	2.09	2.10	40.61
Ukiah	56	-3	81	34	3,974	3,833	4	0.04	0.96	1.60	35.07
Santa Rosa	57	-2	79	32	3,219	3,169	3	0.00	0.65	1.47	34.00
Napa State Hospital	57	-1	77	35	3,162	3,021	1	0.00	0.45	0.84	20.36
<b>Central Coast</b>											
San Francisco	62	1	73	50	3,188	3,090	0	0.00	0.00	0.71	19.77
San Jose	62	0	79	46	3,848	3,846	2	0.04	0.11	0.48	13.58
Salinas	NA	NA	NA	NA	NA	2,885	NA	NA	NA	0.54	12.66
Monterey	58	-1	73	43	2,219	2,575	2	0.05	0.09	0.78	16.36
Paso Robles	58	-1	81	29	3,802	3,856	0	0.00	0.00	0.50	12.24
<b>Sacramento Valley</b>											
Redding	58	-3	82	34	5,333	5,140	3	0.00	0.34	1.74	33.70
Red Bluff	58	-3	83	35	5,202	5,070	1	0.00	0.03	0.93	23.25
Orland	NA	NA	NA	NA	NA	4,765	NA	NA	NA	0.81	21.52
Oroville	60	-1	80	40	5,117	4,978	3	0.12	0.48	1.28	25.84
Marysville	58	-3	80	38	4,712	4,659	4	0.14	0.51	0.91	20.21
Sacramento	59	-1	79	39	4,773	4,379	3	0.05	1.03	0.74	18.10
<b>San Joaquin Valley</b>											
Stockton	59	-3	78	37	4,644	4,877	1	0.00	0.19	0.62	13.53
Modesto	59	-3	76	41	4,569	4,937	1	0.00	0.42	0.49	12.34
Merced Macready	59	-2	79	39	4,788	4,762	2	0.00	0.16	0.58	11.87
Madera	59	-2	80	34	4,899	5,020	1	0.00	0.02	0.39	10.86
Fresno	62	-1	78	44	5,669	5,587	0	0.00	0.00	0.50	11.05
Lemoore	60	-1	81	36	5,132	5,016	2	0.04	0.14	0.39	7.23
Visalia	62	1	91	39	5,296	5,000	2	0.00	0.08	0.49	10.37
Bakersfield	62	-2	79	45	5,780	5,912	2	0.15	0.30	0.25	6.40
<b>Cascade Sierra</b>											
Alturas	38	-6	62	15	2,005	1,783	5	0.31	0.60	0.81	11.72
Mount Shasta	44	-4	65	21	2,674	2,099	4	0.01	0.31	1.82	37.86
Blue Canyon	47	-5	66	32	2,518	2,413	4	0.40	2.04	3.25	62.80
Yosemite Valley	NA	NA	NA	NA	NA	2,968	NA	NA	NA	2.12	40.65
<b>South Coast</b>											
Santa Maria	59	-2	75	41	2,565	3,005	0	0.00	0.00	0.48	13.42
Santa Barbara	62	1	80	45	3,432	3,244	0	0.00	0.00	0.65	17.38
Oxnard	63	0	79	50	3,262	3,721	0	0.00	0.00	0.42	13.05
Riverside	65	-2	80	53	5,081	5,562	1	0.00	0.01	0.30	9.48
Los Angeles	65	-1	77	53	3,935	4,474	0	0.00	0.00	0.44	12.33
San Diego	65	-2	77	54	4,266	4,859	1	0.00	0.01	0.45	9.87
<b>Southeast Interior</b>											
Bishop	53	-1	75	27	3,686	3,836	1	0.00	0.18	0.33	4.87
Daggett	64	-1	83	46	6,381	6,629	0	0.00	0.00	0.22	3.80
Lancaster	60	1	83	32	4,811	4,912	0	0.00	0.00	0.31	6.86
Thermal	73	3	85	60	7,866	7,889	0	0.00	0.00	0.18	2.98
Blythe	72	1	87	57	8,312	8,514	0	0.00	0.00	0.15	3.58
Imperial	71	0	86	52	7,960	8,226	0	0.00	0.00	0.18	2.39

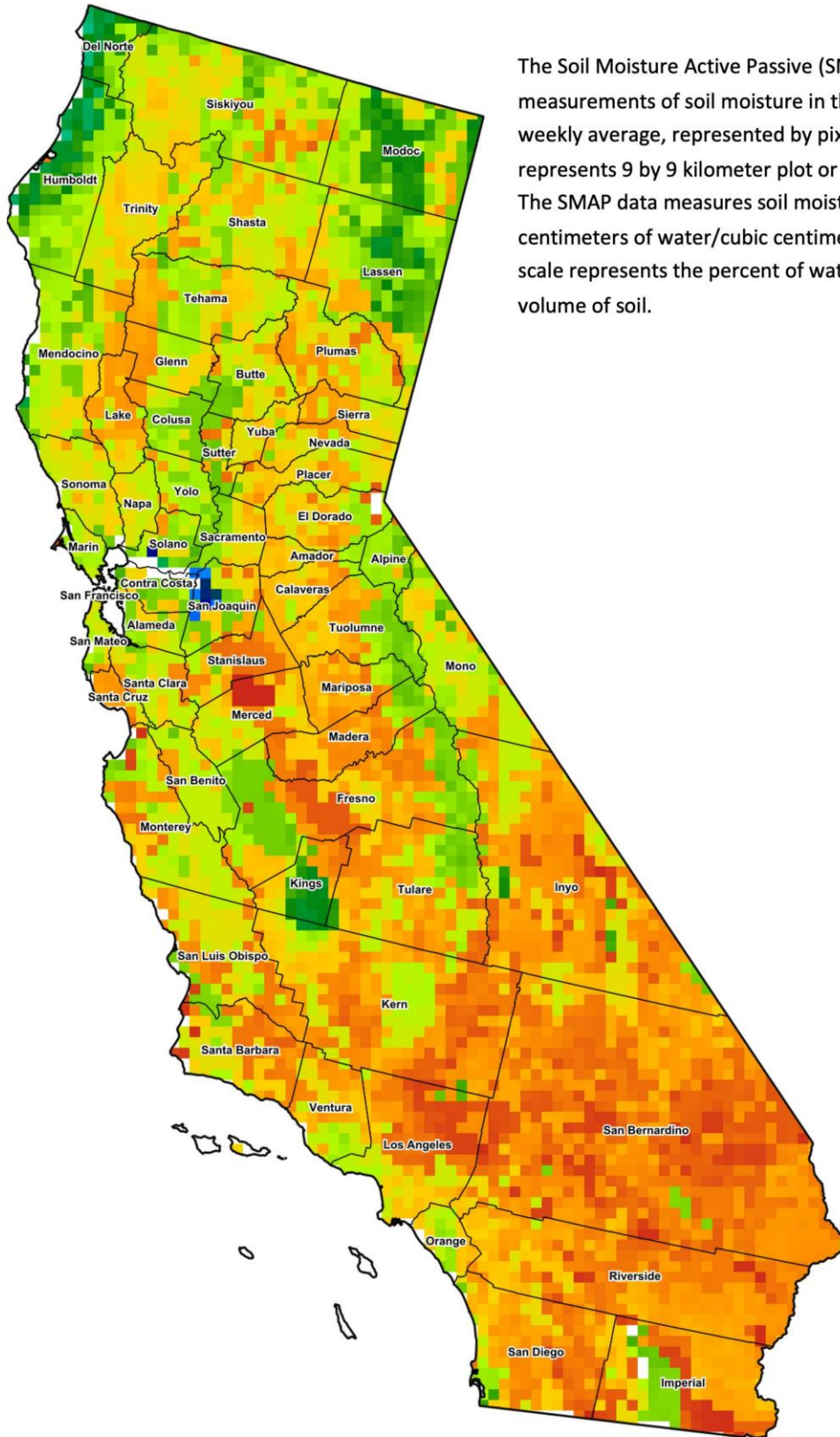
<sup>1</sup> Previously labeled as growing degree hours. The column title was corrected in the Sept 27, 2021 report.  
<sup>2</sup> Previously calculated with 60 degree base. This calculation was changed for the 2022 and later seasons.  
<sup>3</sup> Total number of days with precipitation events this season.  
<sup>4</sup> Rain or melted snow/ice.  
<sup>5</sup> Normal periods 1990-2020 used in departure from normal calculations.

Data retrieved from NOAA and NWS. Calculated by USDA NASS.  
 All rights reserved.

**Reservoir Data from the California Department of Water Resources**

Reservoir	Capacity	October 29, 2023			This Date Last Year	
		Storage	Percent of Capacity	Percent of Average	Storage	Percent of Capacity
		<i>Acre Feet</i>	<i>Percent</i>	<i>Percent</i>	<i>Acre Feet</i>	<i>Percent</i>
Shasta Lake	4,547,300	3,158,673	69	129	1,421,354	31
Lake Oroville	3,537,400	2,431,389	69	134	1,112,610	31
Trinity Lake	2,443,800	1,225,267	50	86	535,512	22
New Melones Reservoir	2,413,000	1,889,064	79	147	585,106	24
San Luis Reservoir	2,057,200	1,353,758	66	149	502,073	25
Don Pedro Reservoir	4,547,300	1,641,719	81	123	1,004,988	50

Source: [cdec.water.ca.gov/reportapp/javareports?name=DLYHYDRO](https://cdec.water.ca.gov/reportapp/javareports?name=DLYHYDRO)



The Soil Moisture Active Passive (SMAP) provides measurements of soil moisture in the root zone as a weekly average, represented by pixels. Each pixel represents 9 by 9 kilometer plot or about 20,000 acres. The SMAP data measures soil moisture in cubic centimeters of water/cubic centimeters of soil. The scale represents the percent of water in a given volume of soil.



**Drought Conditions from the U.S. Drought Monitor as of 10/24/2023**

Time	Percent of Land in Drought Rating						Drought Severity (DSCI)
	None	D0	D1	D2	D3	D4	
Current	94.32	5.68	0.00	0.00	0.00	0.00	6
Last Week	94.32	5.68	0.00	0.00	0.00	0.00	6
3 Months Ago	74.43	19.28	6.29	0.00	0.00	0.00	32
One Year Ago	0.00	0.23	7.94	48.76	26.50	16.57	351

The U.S. Drought Monitor is jointly produced by the National Drought Mitigation Center at the University of Nebraska-Lincoln, the United States Department of Agriculture, and the National Oceanic and Atmospheric Administration. [droughtmonitor.unl.edu/CurrentMap/StateDroughtMonitor.aspx?CA](http://droughtmonitor.unl.edu/CurrentMap/StateDroughtMonitor.aspx?CA)