



# California Crop Progress & Condition

Cooperating with the California Department of Food and Agriculture  
Pacific Region • 650 Capitol Mall, Suite 6-100 • Sacramento, CA 95814 • (916) 738-6600 • (855) 270-2722 FAX •  
[www.nass.usda.gov/ca](http://www.nass.usda.gov/ca)

**WEEK ENDING: November 19, 2023**  
**RELEASED: November 20, 2023**

**FREQUENCY: Weekly**  
**VOL. 44 NO. 34**

## WEATHER

Average low temperatures for California ranged from 22 to 46 in the mountains, 25 to 64 in the desert, 33 to 60 along the coast, and 37 to 58 in the Central Valley. Average high temperatures for the state ranged from 39 to 72 in the mountains, 56 to 82 in the desert, 57 to 82 along the coast, and 58 to 82 in the Central Valley.

## FIELD CROPS

Across the state, silage **corn** harvest and fall ground work neared completion. **Alfalfa** harvest neared completion. Growers continued to prepare soil for winter crop plantings. In the Sacramento Valley, **rice** harvest neared completion. In the San Joaquin Valley, **cotton** harvest and ginning activities continued. In Tulare County, soil was cultivated with manure for winter crop plantings. **Winter wheat** was planted. Alfalfa harvest was slowed due to rain. Cotton harvest continued.

## FRUIT CROPS

Table and wine **grape** harvests were wrapping up for some varieties. **Pluot** and **prune** harvests were mostly completed. **Figs, apples, plums, pears, pomegranates,** and **kiwifruit** harvests continued. **Persimmon** harvest continued with early varieties like Fuyu and Hachiya being picked. **Cherry** and **apricot** orchards were pruned and treated for nematodes. **Olives** for oil harvest continued. **Strawberry** harvest was winding down due to cooler temperatures and fewer hours of sunlight. **Blueberries** and **blackberries** were dormant. **Raspberry** harvest continued. New citrus plantings gained size. Navel **orange** and **grapefruit** harvests were ongoing. District 3 **lemon** harvest ramped up while District 1 harvest was off to a slow start.

## NUT CROPS

**Pecan** harvest was ongoing. **Walnut** and **almond** harvests were mostly complete. **Pistachio** harvest was completed. Walnut and almond orchards were treated for nematodes. Almond orchards were being pruned.

## VEGETABLE CROPS

In the Northern San Joaquin Valley, **onions** and **garlic** were harvested. **Honeydew, sweet potato,** and **cantaloupe** harvests neared completion. In the Southern San Joaquin Valley, garlic, **carrots,** onions, **cucumbers, melons, squash, tomatoes, sweet corn,** and **peppers** were harvested. **Broccoli** was planted. Along the Central Coast, broccoli, cauliflower, **brussel sprouts,** and **lettuce** were harvested. Eggplant, **bell pepper,** lettuce, and **celery** harvests continued in the Coachella Valley.

## LIVESTOCK

Foothill rangeland and non-irrigated pasture was in fair condition. The week's rainfall is expected to stimulate new growth of grasses. Irrigated pasture was in good condition. Supplemental feeding for cattle continued in the San Joaquin and Sacramento Valleys. Movement of cattle down from higher elevation range began. Fall calving season was wrapping up. Cooler temperatures stimulated milk production. Sheep grazed retired cropland, harvested vegetable fields, and alfalfa fields. Bees continued to be moved into the state for overwintering.

**CALIFORNIA CROP WEATHER – WEEK ENDING NOVEMBER 19, 2023**

STATIONS	TEMPERATURE				GROWING DEGREE DAYS <sup>1</sup> AT 50 °F BASE <sup>2</sup>		RAIN DAYS <sup>3</sup>	PRECIPITATION <sup>4</sup>			
	Average for Week Ending Nov 19, 2023	Departure from Normal <sup>5</sup>	High	Low	This Year	Normal Year <sup>5</sup>	This Season	This Week	This Season	Normal Season <sup>5</sup>	Normal Year <sup>5</sup>
					Jan 1 - Nov 19, 2023	Jan 1 - Nov 19, 2023	Oct 1 - Nov 19, 2023	Week Ending Nov 19, 2023	Oct 1 - Nov 19, 2023	Oct 1 - Nov 19	Oct 1 - Sept 30
-- Degrees Fahrenheit --				-- Number --		-- Days --	-- Inches of Precipitation --				
<b>North Coast</b>											
Eureka WFO	55	5	66	40	1,532	1,309	21	1.18	5.61	4.99	40.61
Ukiah	56	4	70	40	4,131	3,934	11	1.42	2.97	3.68	35.07
Santa Rosa	56	4	69	41	3,384	3,276	9	1.46	2.40	3.59	34.00
Napa State Hospital	58	6	70	42	3,334	3,125	7	0.74	1.37	2.04	20.36
<b>Central Coast</b>											
San Francisco	61	5	73	52	3,455	3,266	6	0.77	0.82	1.85	19.77
San Jose	63	7	78	48	4,119	4,018	5	0.40	0.58	1.26	13.58
Salinas	NA	NA	NA	NA	NA	3,054	NA	NA	NA	1.29	12.66
Monterey	58	3	71	45	2,411	2,725	6	0.44	0.58	1.65	16.36
Paso Robles	55	2	74	33	3,949	3,968	1	1.74	1.74	1.04	12.24
<b>Sacramento Valley</b>											
Redding	56	3	73	39	5,481	5,257	7	1.74	2.28	3.81	33.70
Red Bluff	56	3	70	41	5,366	5,196	5	0.55	0.68	2.46	23.25
Orland	NA	NA	NA	NA	NA	4,903	NA	NA	NA	2.02	21.52
Oroville	56	2	71	43	5,311	5,116	7	0.45	1.04	3.16	25.84
Marysville	57	5	72	42	4,896	4,775	7	0.31	0.84	2.29	20.21
Sacramento	57	5	70	42	4,975	4,491	7	0.30	1.38	1.82	18.10
<b>San Joaquin Valley</b>											
Stockton	57	3	73	41	4,825	5,032	5	0.38	0.64	1.48	13.53
Modesto	57	3	73	38	4,728	5,087	6	0.41	0.93	1.13	12.34
Merced Macready	58	5	77	37	4,972	4,893	5	0.47	0.98	1.26	11.87
Madera	58	4	78	38	5,076	5,164	3	0.04	0.27	0.96	10.86
Fresno	61	6	76	45	5,908	5,754	3	0.12	0.21	1.07	11.05
Lemoore	NA	NA	NA	NA	NA	5,143	NA	NA	NA	0.74	7.23
Visalia	60	6	75	42	5,505	5,138	5	0.10	0.28	1.16	10.37
Bakersfield	64	8	82	45	6,050	6,100	4	0.01	0.32	0.58	6.40
<b>Cascade Sierra</b>											
Alturas	40	2	61	22	2,008	1,783	10	0.69	1.86	1.62	11.72
Mount Shasta	45	4	56	33	2,681	2,099	9	0.24	0.73	4.03	37.86
Blue Canyon	NA	NA	NA	NA	NA	2,416	NA	NA	NA	7.62	62.80
Yosemite Valley	NA	NA	NA	NA	NA	2,970	NA	NA	NA	4.68	40.65
<b>South Coast</b>											
Santa Maria	60	3	74	40	2,768	3,196	2	0.26	0.26	1.19	13.42
Santa Barbara	61	4	78	43	3,663	3,427	3	0.24	0.24	1.47	17.38
Oxnard	62	2	72	50	3,557	3,964	2	0.18	0.18	0.86	13.05
Riverside	63	2	82	46	5,399	5,843	2	0.17	0.18	0.62	9.48
Los Angeles	64	2	77	51	4,265	4,771	1	0.13	0.13	0.91	12.33
San Diego	63	0	75	48	4,553	5,166	3	0.15	0.17	0.91	9.87
<b>Southeast Interior</b>											
Bishop	47	2	66	25	3,713	3,846	2	0.07	0.25	0.53	4.87
Daggett	56	0	75	39	6,557	6,824	1	0.04	0.04	0.40	3.80
Lancaster	53	2	72	28	4,893	4,996	2	0.18	0.18	0.51	6.86
Thermal	64	3	82	42	8,183	8,201	1	0.14	0.14	0.27	2.98
Blythe	65	2	82	48	8,664	8,855	1	0.03	0.03	0.26	3.58
Imperial	65	2	81	48	8,297	8,570	1	0.23	0.23	0.27	2.39

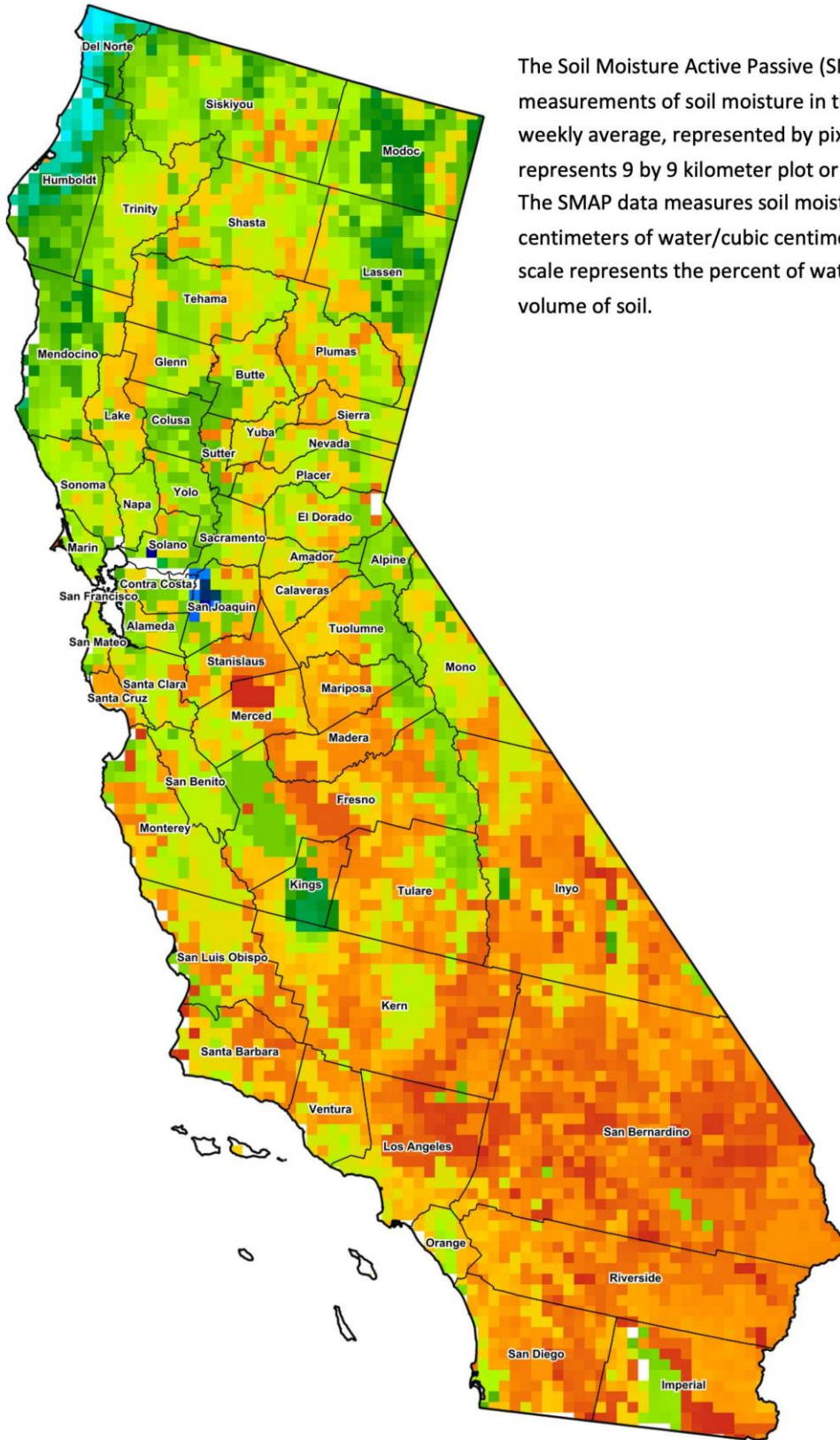
<sup>1</sup> Previously labeled as growing degree hours. The column title was corrected in the Sept 27, 2021 report.  
<sup>2</sup> Previously calculated with 60 degree base. This calculation was changed for the 2022 and later seasons.  
<sup>3</sup> Total number of days with precipitation events this season.  
<sup>4</sup> Rain or melted snow/ice.  
<sup>5</sup> Normal periods 1990-2020 used in departure from normal calculations.

Data retrieved from NOAA and NWS. Calculated by USDA NASS.  
 All rights reserved.

**Reservoir Data from the California Department of Water Resources**

Reservoir	Capacity	November 19, 2023			This Date Last Year	
		Storage	Percent of Capacity	Percent of Average	Storage	Percent of Capacity
	<i>Acre Feet</i>	<i>Acre Feet</i>	<i>Percent</i>	<i>Percent</i>	<i>Acre Feet</i>	<i>Percent</i>
Shasta Lake	4,547,300	3,107,334	68	127	1,396,515	31
Lake Oroville	3,537,400	2,346,843	66	132	997,399	28
Trinity Lake	2,443,800	1,212,831	50	86	530,632	22
New Melones Reservoir	2,413,000	1,910,627	80	148	586,550	24
San Luis Reservoir	2,057,200	1,216,258	60	121	510,636	25
Don Pedro Reservoir	4,547,300	1,634,683	81	122	1,007,286	50

Source: [cdec.water.ca.gov/reportapp/javareports?name=DLYHYDRO](https://cdec.water.ca.gov/reportapp/javareports?name=DLYHYDRO)



**Drought Conditions from the U.S. Drought Monitor as of 11/14/2023**

Time	Percent of Land in Drought Rating						Drought Severity (DSCI)
	None	D0	D1	D2	D3	D4	
Current	95.32	4.68	0.00	0.00	0.00	0.00	5
Last Week	94.04	5.96	0.00	0.00	0.00	0.00	6
3 Months Ago	74.56	18.17	7.27	0.00	0.00	0.00	33
One Year Ago	0.00	0.52	14.51	44.05	28.18	12.73	338

The U.S. Drought Monitor is jointly produced by the National Drought Mitigation Center at the University of Nebraska-Lincoln, the United States Department of Agriculture, and the National Oceanic and Atmospheric Administration. [droughtmonitor.unl.edu/CurrentMap/StateDroughtMonitor.aspx?CA](https://droughtmonitor.unl.edu/CurrentMap/StateDroughtMonitor.aspx?CA)