



California Poultry Report

Cooperating with the California Department of Food and Agriculture

California Field Office · P.O. Box 1258 · Sacramento, CA 95812 · (916) 498-5161 · (916) 498-5186 Fax · www.nass.usda.gov/ca

Released: January 30, 2009 · Frequency: Monthly · (USPS 598-310) VOL. 30 NO. 1

HIGHLIGHTS IN THIS ISSUE:

Egg and Layer Production	1
Chick Hatch -- Eggs in Incubators	2
Turkey Poults Hatched and Placed.....	3
Poultry and Egg Prices	3
Cold Storage Holdings	4

U.S. DECEMBER EGG PRODUCTION

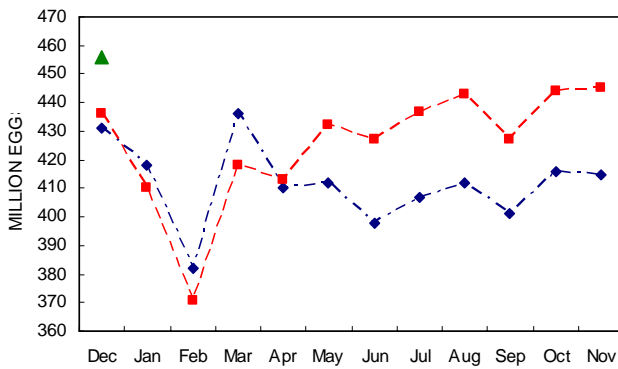
U.S. egg production totaled 7.78 billion during December 2008, down slightly from last year. Production included 6.71 billion table eggs, and 1.07 billion hatching eggs, of which 1.00 billion were broiler-type and 67 million were egg-type. The total number of layers during December 2008 averaged 341 million, down 1 percent from last year. December egg production per 100 layers was 2,281 eggs, up 1 percent from December 2007.

CALIFORNIA EGG PRODUCTION

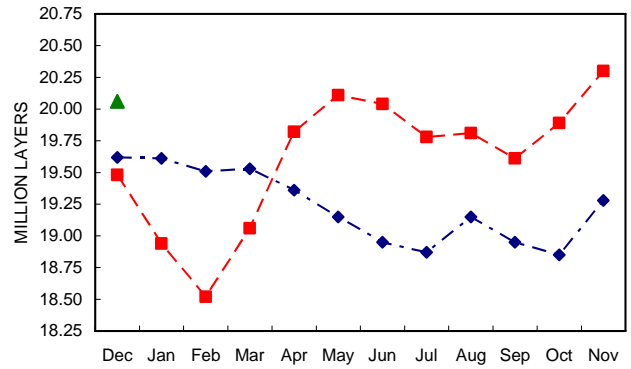
California's egg production during December totaled 456 million, an increase of 11.0 million from November's production and 20.0 million above December 2007. The average number of layers during the month totaled 20.1 million, 1 percent below last month, but 3 percent above December 2007. Eggs per 100 layers during the month were 2,273, compared to 2,192 a month earlier and 2,239 in December 2007.

All layers in the U.S. on January 1, 2009 totaled 341 million, down 1 percent from last year. The 341 million layers consisted of 285 million layers producing table- or market-type eggs, 53.6 million layers producing broiler-type hatching eggs and 2.81 million layers producing egg-type hatching eggs. Rate of lay per day on January 1, 2009, averaged 72.9 eggs per 100 layers, up 1 percent from January 1, 2008.

EGG PRODUCTION, CALIFORNIA
DECEMBER 1/ THROUGH NOVEMBER, 2007-2009



AVERAGE NUMBER OF LAYERS, CALIFORNIA
DECEMBER 1/ THROUGH NOVEMBER, 2007-2009



LAYER NUMBERS AND EGG PRODUCTION DECEMBER, FORCED MOLTING AS OF JANUARY 1

State	Average Number of Layers on Hand		Eggs Per 100 Layers		Total Egg Production		Layers Being Molted		Layers With Molt Completed	
	2007	2008	2007	2008	2007	2008	2008	2009	2008	2009
	Thousands		Number		Millions		Percent			
Alabama	9,526	9,392	1,942	1,948	185	183	1.0	0.5	6.0	6.5
Arkansas	14,108	13,045	1,963	1,993	277	260	2.5	1.5	12.5	7.5
California	19,476	20,060	2,239	2,273	436	456	9.5	2.5	33.5	33.5
Georgia	19,312	18,439	2,133	2,131	412	393	1.5	1.0	14.0	10.5
Indiana	24,351	24,271	2,308	2,307	562	560	4.0	3.5	32.0	34.5
Iowa	53,984	53,470	2,245	2,287	1,212	1,223	2.5	3.5	35.0	29.0
North Carolina	12,566	12,540	2,109	2,113	265	265	0.0	2.0	8.1	11.0
Ohio	26,825	27,556	2,345	2,384	629	657	2.5	2.5	15.5	17.5
Pennsylvania	21,836	21,997	2,464	2,450	538	539	1.5	3.0	14.5	10.5
Texas	19,157	18,506	2,281	2,286	437	423	4.5	3.5	25.0	19.0
UNITED STATES	344,965	340,957	2,256	2,281	7,784	7,778	2.8	3.0	22.8	20.6

U.S. BROILER HATCH

Broiler-type chicks hatched during December 2008 totaled 779 million, down 5 percent from December 2007. Eggs in incubators totaled 630 million on January 1, 2009, down 7 percent from a year earlier.

Leading breeders placed 6.58 million broiler-type pullet chicks for future domestic hatchery supply flocks during December 2008, down 9 percent from December 2007.

BROILER-TYPE CHICKS HATCHED, DECEMBER

State	2007	2008	<u>2008</u> <u>2007</u>
	Thousands		Percent
Alabama	119,224	109,328	92
Arkansas	105,700	92,277	87
Delaware	15,311	12,213	80
Florida	4,974	4,698	94
Georgia	125,585	117,499	94
Kentucky	27,580	28,783	104
Louisiana	14,469	13,023	90
Maryland	31,449	32,184	102
Mississippi	69,754	64,880	93
North Carolina	72,070	68,905	96
Oklahoma	24,132	24,377	101
Pennsylvania	15,257	15,237	100
South Carolina	19,468	20,096	103
Texas	56,004	56,325	101
Virginia	23,372	22,487	96
California, Missouri, Tennessee and West Virginia	73,314	71,299	97
Other States 1/	23,618	25,549	108
UNITED STATES	821,281	779,160	95

1/ Not published separately to avoid disclosing data for individual operations.

U.S. EGG-TYPE CHICKS HATCHED

Egg-type chicks hatched during December 2008 totaled 36.4 million, up 1 percent from December 2007. Eggs in incubators totaled 36.7 million on January 1, 2009, up 2 percent from a year ago.

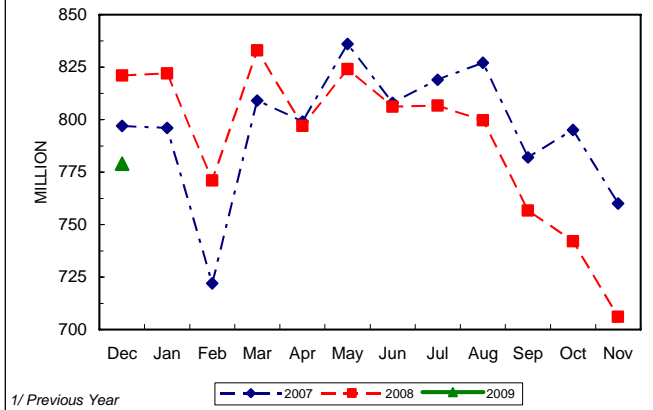
Domestic placements of egg-type pullet chicks for future hatchery supply flocks by leading breeders totaled 199 thousand during December 2008, down 19 percent from December 2007.

EGG-TYPE CHICKS HATCHED, DECEMBER

State	2007	2008	<u>2008</u> <u>2007</u>
	Thousands		Percent
Georgia	2,105	2,090	99
Indiana	4,958	5,710	115
Iowa	6,804	6,876	101
Minnesota	991	1,134	114
Pennsylvania	4,575	4,041	88
Other States 1/ UNITED STATES	16,433	16,542	101
	35,866	36,393	101

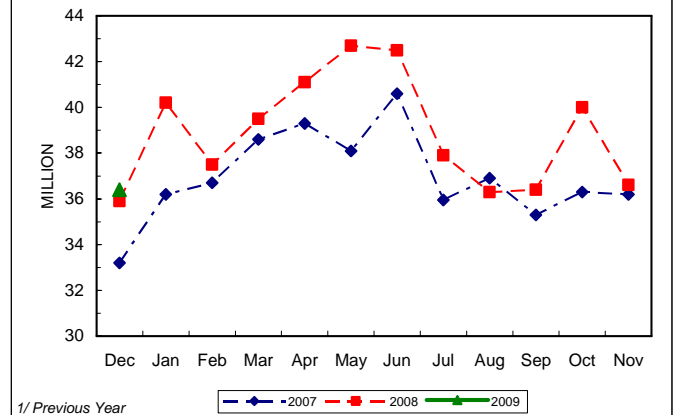
1/ Not published separately to avoid disclosing data for individual operations.

BROILER CHICKS HATCHED, UNITED STATES DECEMBER 1/ THROUGH NOVEMBER, 2007-2009



1/ Previous Year

EGG TYPE CHICKS HATCHED, UNITED STATES DECEMBER 1/ THROUGH NOVEMBER, 2007-2009



1/ Previous Year

EGGS IN INCUBATORS, JANUARY 1

Geographic Division	Broiler-Type			Egg-Type		
	2008	2009	<u>2009</u> <u>2008</u>	2008	2009	<u>2009</u> <u>2008</u>
	Thousands		Percent	Thousands		Percent
North Atlantic	12,863	11,931	93	5,267	5,379	102
East North Central	11,159	11,324	101	7,567	7,518	99
West North Central	29,884	29,104	97	7,834	7,985	102
South Atlantic	253,234	233,580	92	4,886	3,729	76
South Central	345,610	320,269	93	5,313	6,116	115
West	24,278	24,001	99	4,961	5,938	120
UNITED STATES	677,028	630,209	93	35,828	36,665	102

POULTRY AND EGG PRICES

California mid-month market egg price for December 2008 was 91.0 cents per dozen, down 5.0 cents per dozen from November mid-month price, and a 39.0 cent decrease from December 2007.

Nationally, the December market egg price, at 86.0 cents per dozen, decreased 3.4 cents from November and is 42.0 cents below December 2007. The December broiler price, at 48.0 cents per pound, is up 2.0 cents from November and 8.0 cents above a year ago. The December turkey price, at 44.5 cents per pound, is down 14.4 cents from the previous month and 8.1 cents from a year earlier.

POULTRY AND EGG AVERAGE PRICES RECEIVED 1/

Commodity	Unit	December 2007	November 2008	December 2008
		Cents		
CALIFORNIA				
Market Eggs 2/	Doz.	130.0	96.0	91.0
UNITED STATES				
Chickens-Broilers	Lb.	40.0	46.0	48.0
Market Eggs 2/	Doz.	128.0	89.4	86.0
Turkeys 2/	Lb.	52.6	58.9	44.5

1/ The estimated prices shown in the table represent composite average prices received by producers. They are averages for all grades, classes and methods of sale of each commodity for the State and U.S. as a whole.

2/ Mid-month prices.

U.S. TURKEY HATCHERY PRODUCTION

Turkey eggs in incubators on January 1, 2009, in the United States totaled 29.7 million, down 6 percent from January 1, 2008. Eggs in incubators were up 7 percent from the December 1, 2008 total of 27.8 million eggs. Regional changes from the previous year were: East North Central down 3 percent, West North Central down 4 percent, North and South Atlantic down 6 percent, and South Central and West down 16 percent.

Turkey poults hatched during December 2008, in the United States totaled 24.3 million, down 3 percent from December 2007. Poults hatched were up 10 percent from November 2008 total of 22.0 million poults. Regional changes from the previous year were: East North Central down 5 percent,

West North Central up 1 percent, North and South Atlantic up 2 percent, and South Central and West down 21 percent.

The 23.0 million net poults placed during December 2008 in the United States were down 4 percent from the number placed during the same month a year earlier. Net placements were up 11 percent from the November 2008 total of 20.7 million.

ALL TURKEYS 1/

Geographic Division	Eggs in Incubators January 1		2009 2008	Eggs Hatched During Dec.		2008 2007
	2008	2009		2007	2008	
	Thousands		Percent	Thousands		Percent
E N Central	4,541	4,403	97	3,793	3,602	95
W N Central	12,231	11,711	96	9,428	9,506	101
N & S Atlantic	10,799	10,161	94	8,458	8,601	102
S Central & West	4,030	3,389	84	3,266	2,580	79
U.S.	31,601	29,664	94	24,945	24,289	97

1/ Regions (No. & So. Atlantic and So. Central & West) combined to avoid disclosure of individual operations.

NET U.S. TURKEY POULT PLACEMENTS 1/

Month	Total All Breeds		2008-09 2007-08	Cumulative Total		2008-09 2007-08
	2007-08	2008-09		2007-08	2008-09	
	Thousands		Percent	Thousands		Percent
Sept.	24,073	22,515	94	24,073	22,515	94
Oct.	25,222	22,165	88	49,295	44,680	91
Nov. 2/	24,755	20,702	84	74,050	65,382	88
Dec.	24,091	23,020	96	98,141	88,402	90
Jan.	26,067			124,208		
Feb.	25,011			149,219		
Mar.	26,369			175,588		
Apr.	25,863			201,451		
May	27,084			228,535		
June	25,557			254,092		
July	26,551			280,643		
Aug.	24,337			304,980		

1/ Includes imports and excludes exported poults.

2/ Revised 2008 data only.

PACIFIC COAST AND UNITED STATES COLD STORAGE

Commodity	Unit	December 31, 2007	November 30, 2008	December 31, 2008	Dec. 2008 Dec. 2007	Dec. 2008 Nov. 2008
		Thousands			Percent	
PACIFIC COAST						
Turkeys	Lbs.	21,892	16,691	16,820	77	101
Chickens	Lbs.	30,380	46,895	44,285	146	94
Ducks	Lbs.	896	322	270	30	84
Total Frozen Poultry Supplies	Lbs.	53,168	63,908	61,375	115	96
UNITED STATES						
Turkeys	Lbs.	260,594	360,379	398,094	153	110
Chickens	Lbs.	741,145	811,100	763,974	103	94
Ducks	Lbs.	5,521	1,951	1,991	36	102
Total Frozen Poultry Supplies	Lbs.	1,007,260	1,173,430	1,164,059	116	99
Eggs, Frozen	Lbs.	14,652	21,261	22,763	155	107