



2007 CATTLE, MILK, AND HOG HIGHLIGHTS

◆ Cattle and calves

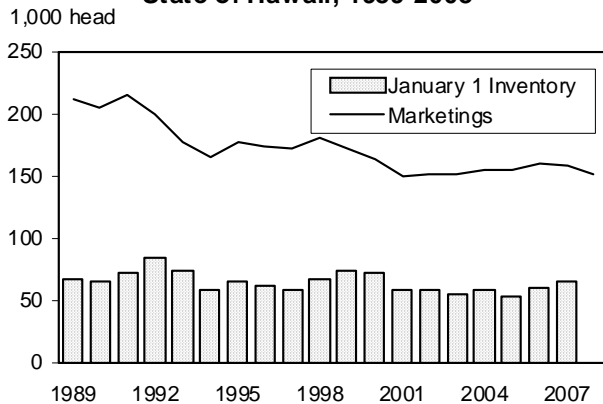
State's January 1 inventory down 4 percent

The inventory of cattle and calves on Hawaii ranches totaled 152,000 head on January 1, 2008. This represented a 4 percent decline from 2007 and was the result of reductions on the Big Island and Oahu more than offsetting higher inventories on Kauai and Maui counties.

Hawaii county accounted for 72 percent of the State's total cattle and calves with an inventory of 109,100 head on January 1, 2008. Maui county was a distant second with an inventory of 24,800 head, up 14 percent from 2007. Kauai county also showed an increase in the inventory of cattle and calves at 12,500 head or 4 percent higher than on January 1, 2007. Honolulu county accounted for 4 percent of the State's cattle and calves inventory with 5,600 head.

Hawaii county led all counties with 2007 sales of cattle and calves at \$19.7 million, down 1 percent from 2006. Ranchers in Maui county were the only ones to post a gain in sales at \$4.3 million, up 25 percent from 2006. Kauai at \$1.3 million was down 24 percent. Honolulu county experienced the largest decline in the sale of cattle and calves at \$942,000 in 2007, down 38 percent.

CATTLE: Inventory and Marketings, State of Hawaii, 1989-2008



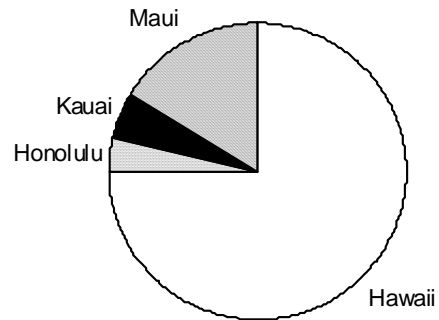
Cattle marketings increase

Marketings during 2007 totaled 36.2 million pounds (live weight), up 5 percent from 2006. Sale of calves (animals weighing less than 500 pounds) accounted for 74 percent of total marketings in 2007. The 48,000 calves sold in 2007 represented a 17 percent increase from 2006.

Value of sales down 1 percent

The value of all cattle and calves marketed in 2007 totaled \$26.2 million, down 1 percent from 2006. The annual average price received by ranchers for all cattle and calves marketed in 2007 was \$72.40 per hundredweight (live weight), down 6 percent from 2006. The decline in price was partially offset by a 5 percent increase in pounds sold at 36.2 million pounds (live weight).

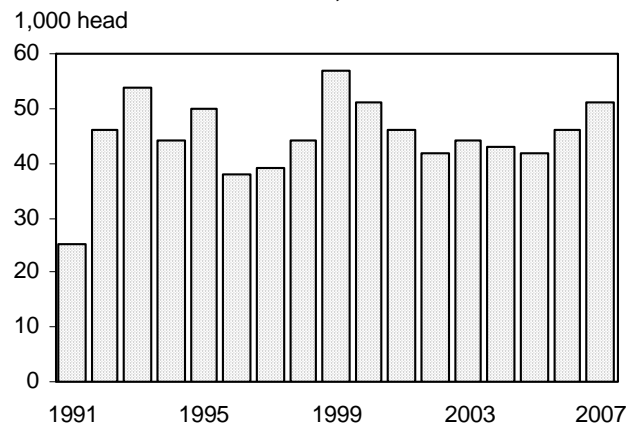
CATTLE AND CALVES: Value of Sales, by County, State of Hawaii, 2007



Exports of cattle and calves top 51,000 head

Hawaii ranchers exported 51,000 head of cattle and calves in 2007, up 11 percent from 2006. Calves (animals weighing less than 500 pounds) accounted for the bulk of the exports at 48,000 head in 2007 compared to 3,000 head of cattle (animals weighing 500 pounds or more) that were exported.

CATTLE AND CALVES: Exports, State of Hawaii, 1991-2007

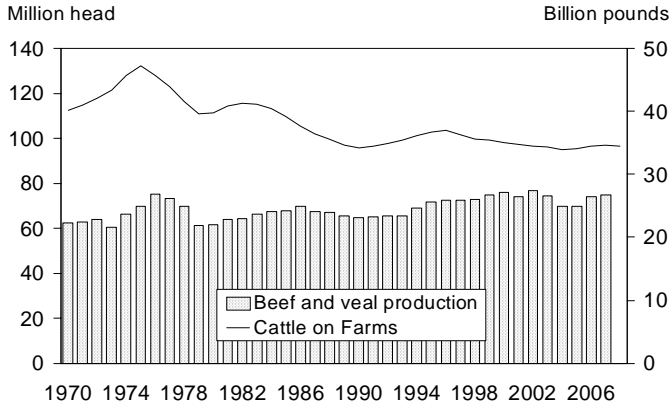




U.S. cattle inventory down fractionally

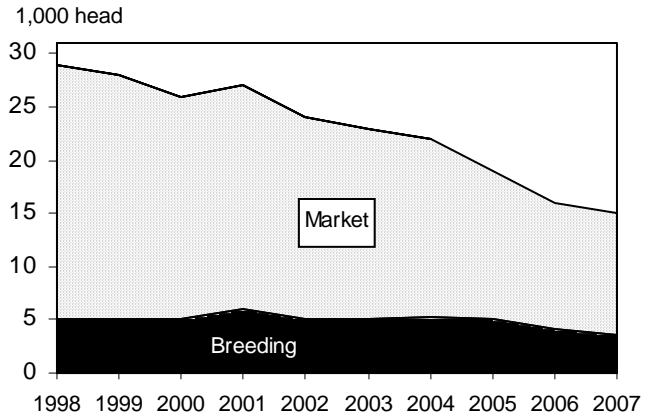
All cattle and calves in the United States as of January 1, 2008, totaled 96.7 million head, slightly below the 97.0 million on January 1, 2007. The 2007 U.S. calf crop was estimated at 37.4 million head, down slightly from 2006. Calves born during the first half of the year were estimated at 27.2 million, down 1 percent from 2006.

CATTLE: Beef and Veal Production and Cattle on Farms, United States, 1970-2008



Most of the State's hogs and pigs are located on Oahu which saw its inventory decrease 4 percent from last year to 9,200 head on December 1, 2007. Maui county had the second most hogs and pigs at 2,700 head, down 23 percent from December 1, 2006. Kauai county was a close third at 2,000 head, unchanged from last year. The Big Island had an inventory of 1,100 hogs and pigs on December 1, 2007, accounting for 7 percent of the State's hogs and pigs.

HOGS AND PIGS: Inventory by Classes, State of Hawaii, 1998-2008



◆ **Milk**

Dairy closures result in decreases

Hawaii's dairy cows produced 35.5 million pounds of milk in 2007, down 38 percent from 2006. The closure of two large commercial dairies in 2007 was a major factor for the decline in total milk production.

The cow herd declined 33 percent to an annual average of 2,900 head. Cows produced an average of 12,241 pounds of milk in 2007, 8 percent less per cow than in 2006.

In 2007, milk producers received an average return of \$28.20 per hundredweight for milk sold, up 8 percent from 2006. Revenues at the farm gate level fell 33 percent to a total of \$9.7 million in 2007.

◆ **Hogs and Pigs**

Statewide December 1 inventory down 6 percent

The inventory of hogs and pigs on Hawaii's farms totaled 15,000 head on December 1, 2007. This represents a 6 percent, or 1,000 head, decline from December 1, 2006.

Hog marketings decrease

Hog marketings totaled 3.9 million pounds (live weight) in 2007, down 13 percent from 2006 due to a matching percentage decline in the number of hogs sold. Honolulu county led the State in hog sales with 2.2 million pounds (live weight) in 2007, down 17 percent from 2006.

Value of hog sales drop 11 percent

Total value of hog sales declined 11 percent to \$3.7 million in 2007. The average farm price rose to \$94.90 per hundredweight (live weight), 2 percent higher than the 2006 average of \$92.70.

HOGS: Value of Sales, by County, State of Hawaii, 2007

