



Illinois Crop Progress and Condition

Released April 29, 2024

There were 3.1 days suitable for fieldwork in the week ending April 28, 2024. Statewide, the average temperature was 55.2 degrees, 0.8 degrees below normal. Precipitation averaged 1.62 inches, 0.78 above normal. Topsoil moisture supply was rated 4 percent short, 58 percent adequate, and 38 percent surplus. Subsoil moisture supply was rated 1 percent very short, 9 percent short, 63 percent adequate, and 27 percent surplus. Corn planted reached 25 percent, compared to the 5-year average of 25 percent. Corn emerged reached 6 percent, compared to the 5-year average of 3 percent. Soybeans planted reached 26 percent, compared to the 5-year average of 18 percent. Soybeans emerged reached 5 percent, compared to the 5-year average of 1 percent. Winter wheat headed reached 16 percent, compared to the 5-year average of 11 percent. Winter wheat condition was rated 1 percent poor, 12 percent fair, 71 percent good, and 16 percent excellent.

Days Suitable for Fieldwork and Soil Moisture Supply: Week Ending April 28, 2024

State	Days Suitable for Fieldwork	Topsoil Moisture Supply				Subsoil Moisture Supply			
		Very Short	Short	Adequate	Surplus	Very Short	Short	Adequate	Surplus
Illinois	3.1	(percent)	(percent)	(percent)	(percent)	(percent)	(percent)	(percent)	(percent)
		-	4	58	38	1	9	63	27

- Represents zero.

Crop Progress – Illinois

Item	Week ending			2019-2023 Average
	April 28, 2024	April 21, 2024	April 28, 2023	
	(percent)	(percent)	(percent)	(percent)
Corn planted	25	11	34	25
Corn emerged	6	1	3	3
Soybeans planted	26	11	32	18
Soybeans emerged	5	1	2	1
Winter wheat headed	16	11	13	11

Winter Wheat Condition – Illinois

Date	Very Poor	Poor	Fair	Good	Excellent
	(percent)	(percent)	(percent)	(percent)	(percent)
April 28, 2024	-	1	12	71	16
April 21, 2024	1	3	13	67	16
April 28, 2023	1	2	31	55	11

- Represents zero.

Pasture Condition – Illinois

Date	Very Poor	Poor	Fair	Good	Excellent
	(percent)	(percent)	(percent)	(percent)	(percent)
April 28, 2024	-	3	19	60	18
April 21, 2024	1	6	23	51	19
April 28, 2023	-	1	17	52	30

- Represents zero.

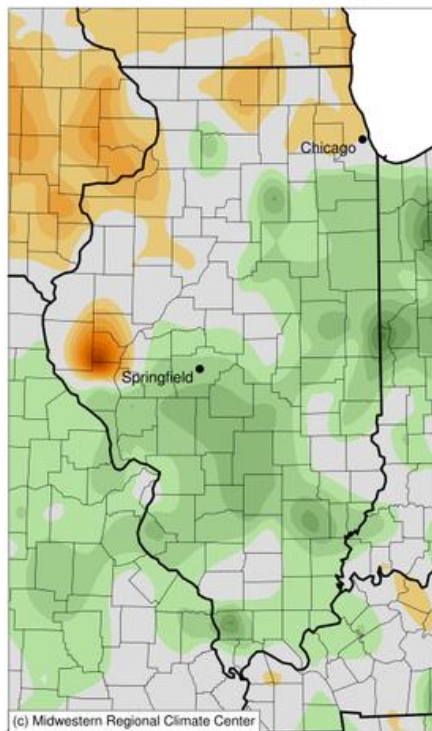
Weather Information: Week Ending April 28, 2024

District and State	Temperature		Precipitation	
	Average	Departure from Normal	Total	Departure from Normal
	(degrees - F)	(degrees - F)	(inches)	(inches)
Northwest	55.1	1.8	1.20	0.46
Northeast	53.0	0.8	1.37	0.54
West	56.3	-0.1	3.16	2.46
Central	54.6	-0.9	2.55	1.84
East	53.2	-1.5	2.18	1.47
West Southwest	54.0	-3.6	1.91	1.05
East Southeast	55.4	-2.1	1.00	0.07
Southwest	58.0	-1.0	0.79	-0.26
Southeast	58.7	-0.4	0.42	-0.74
Illinois	55.2	-0.8	1.62	0.78

Weather data provided by the Midwestern Regional Climate Center: <https://mrcc.purdue.edu>

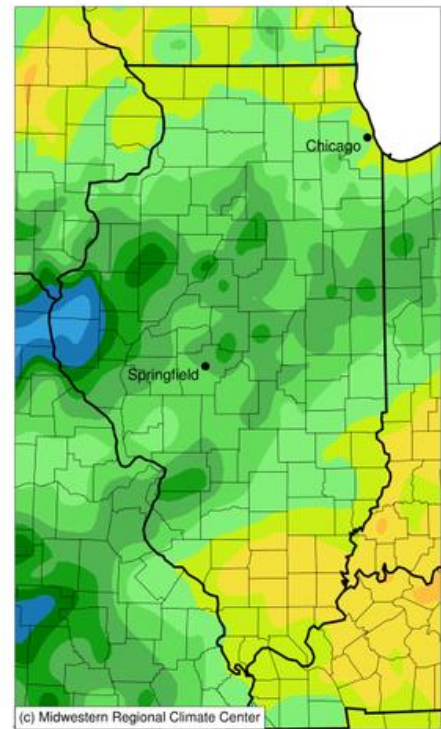
Average Temperature (°F): Departure from 1991-2020 Normals

April 22, 2024 to April 28, 2024

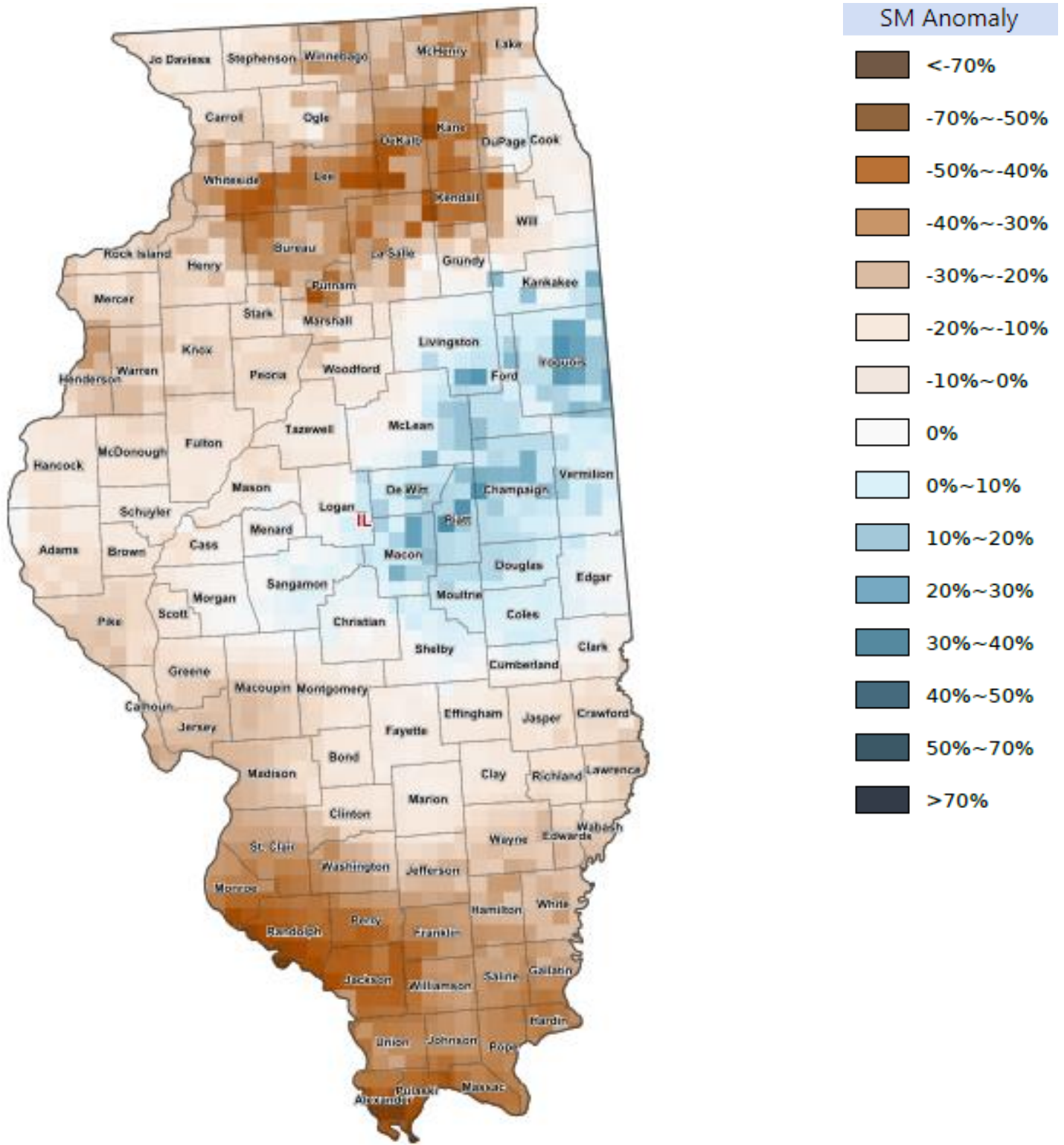


Accumulated Precipitation (in)

April 22, 2024 to April 28, 2024



Soil Moisture Deviation from Historical Average – April 25, 2024



<https://cloud.csiss.gmu.edu/Crop-CASMA/>
(historical average includes 2015 to current)

Access to NASS Reports

For your convenience, you may access NASS reports and products the following ways:

- All reports are available electronically, at no cost, on the NASS web site: <http://www.nass.usda.gov>
- Both national and state specific reports are available via a free e-mail subscription. To set-up this free subscription, visit <http://www.nass.usda.gov> and in the “Follow NASS” box under “Receive reports by Email,” click on “National” or “State” to select the reports you would like to receive.
- Follow us on X @usda_nass

For more information on NASS surveys and reports, call the Heartland Regional Field Office at (314) 595-9594 or e-mail: nassrfohlr@usda.gov.