

# ILLINOIS FARM REPORT



**NATIONAL AGRICULTURAL STATISTICS SERVICE**

Illinois Field Office  
P.O. Box 19283, Springfield, IL 62794-9283  
Phone: (217)492-4295

**U.S. DEPARTMENT OF AGRICULTURE**  
**ILLINOIS DEPARTMENT OF AGRICULTURE**  
<http://www.nass.usda.gov>

RELEASED: NOVEMBER 12, 2008 IFR-08-15

VOL. 29, NO. 15

**HIGHLIGHTS**  
NOVEMBER CROP REPORT  
MILK PRODUCTION  
AGRICULTURAL PRICES  
BIOTECHNOLOGY VARIETIES

THIS FARM REPORT CONTAINS THE RESULTS FROM THESE SURVEYS. THANK YOU FOR YOUR HELP.

*November Ag Yield Report  
October Milk Report  
October Prices Received*

## NOVEMBER CROP REPORT

As of November 1, the Illinois corn for grain yield for 2008 is estimated at 179 bushels per acre, up two bushels from the October 1 forecast. At this level, total production for the state would reach 2.09 billion bushels, eight percent below the 2007 production. Harvest of the crop was only 66 percent complete by November 2 compared to 97 percent in 2007 and 92 percent for the five-year average. Harvest conditions were generally very good across the state during October.

The estimated yield for the Illinois soybean crop is 46 bushels per acre, one bushel above the October 1 forecast. Production is expected to total 416.3 million bushels, 16 percent above last year's production. Temperatures throughout October were below average. As of November 2, 90 percent of the crop had been harvested compared to 97 percent last year and the average of 94 percent.

U.S. corn production is forecast at 12.0 billion bushels, down slightly from the October forecast and eight percent below 2007. Based on conditions as of November 1, yields are expected to average 153.8 bushels per acre, down 0.1 bushel from October but 2.7 bushels above last year. If realized, this will be the second highest yield on record, behind 2004, and production will be the second largest, behind last year. Forecasted yields are higher than last year across the northern half of the Great Plains and northern and central Corn Belt. Yield prospects are lower than last year in the southern half of the Great Plains and Delta.

Soybean production is forecast at 2.92 billion bushels, down less than one percent from the October forecast but up nine percent from last year. If realized, this will be the fourth largest production on record. Based on November 1 conditions, yields are expected to average 39.3 bushels per acre, down 0.2 bushel from October 1 and down 2.4 bushels from 2007. Compared with October 1, yields are forecast lower or unchanged across the Corn Belt and Great Plains, with the exception of Illinois, Indiana, and Missouri. Yields increased from the October 1 forecast in Alabama, Arkansas, Tennessee, New York, and Virginia. Area for harvest in the U.S. is forecast at 74.4 million acres, unchanged from October 1 but up 16 percent from 2007.

### CROPS ACREAGE & PRODUCTION, 2007-2008

Crop (Acres for harvest)	Illinois		United States	
	2007	2008	2007	2008
Acreage and production in thousands				
<u>Corn, Grain</u>				
Acres	13,050	11,700	86,542	78,177
Yield, bu.	175.0	179.0	151.1	153.8
Production	2,283,750	2,094,300	13,073,893	12,019,894
<u>Soybeans</u>				
Acres	8,280	9,050	64,141	74,374
Yield, bu.	43.5	46.0	41.7	39.3
Production	360,180	416,300	2,675,822	2,920,589
<u>Sorghum, Grain</u>				
Acres	77	77	6,805	7,385
Yield, bu.	81.0	95.0	74.2	63.0
Production	6,237	7,315	504,993	465,271
<u>Winter Wheat, Grain</u>				
Acres	890	1,150	35,952	39,614
Yield, bu.	57.0	64.0	42.2	47.2
Production	50,730	73,600	1,515,989	1,867,903
<u>Oats, Grain</u>				
Acres	24	30	1,505	1,395
Yield, bu.	68.0	70.0	60.9	63.5
Production	1,632	2,100	91,599	88,635
<u>Alfalfa Hay</u>				
Acres	380	350	21,670	20,778
Yield, tons	3.70	4.10	3.35	3.44
Production	1,406	1,435	72,575	71,424
<u>All Other Hay</u>				
Acres	300	270	39,955	39,661
Yield, tons	1.70	2.20	1.95	1.99
Production	510	594	77,729	79,076
<u>Apples</u>				
Mil. lbs.	5.0	52.0	9,113.9	9,242.2
<u>Peaches</u>				
Mil. lbs.	100	10,800	1,128,740	1,093,850
<u>Snap Beans 1/</u>				
Acres	11,600	14,100	197,900	186,750
Yield, tons	4.65	4.14	3.79	4.12
Production	53,430	58,370	751,090	769,760
<u>Sweet Corn 1/</u>				
Acres	2/	2/	367,600	379,500
Yield, tons	2/	2/	7.88	7.87
Production	2/	2/	2,897,430	2,987,960

1/ Contract for processing only. Acreage and production are actual and not in thousands. 2/ Not published.

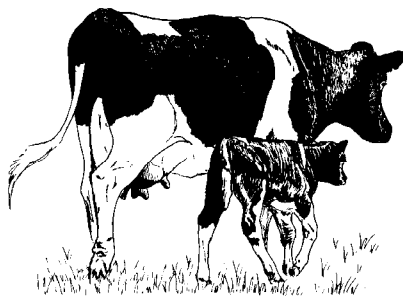
## ILLINOIS DISTRICT ESTIMATES

## CORN, 2007-NOVEMBER 1, 2008

District	Acres planted		Acres for grain		Yield		Production	
	2007	2008	2007	2008	2007	2008	2007	2008
	1,000 acres		1,000 acres		Bushels		1,000 bushels	
Northwest	2,163	2,051	2,135	1,989	186	188	397,074.8	373,932
Northeast	1,242	1,175	1,229	1,141	185	176	227,409.1	200,816
West	1,236	1,177	1,219	1,141	184	187	224,333.7	213,367
Central	1,883	1,677	1,868	1,641	193	195	360,529.8	319,995
East	1,844	1,652	1,829	1,609	184	177	336,567.1	284,793
West Southwest	1,851	1,694	1,835	1,628	170	180	311,935.1	293,040
East Southeast	1,729	1,534	1,710	1,462	160	164	273,616.8	239,768
Southwest	590	549	573	523	123	157	70,450.7	82,111
Southeast	662	591	652	566	126	153	81,832.9	86,478
<b>ILLINOIS</b>	<b>13,200</b>	<b>12,100</b>	<b>13,050</b>	<b>11,700</b>	<b>175</b>	<b>179</b>	<b>2,283,750.0</b>	<b>2,094,300</b>

## SOYBEANS, 2007-NOVEMBER 1, 2008

District	Acres planted		Acres for harvest		Yield		Production	
	2007	2008	2007	2008	2007	2008	2007	2008
	1,000 acres		1,000 acres		Bushels		1,000 bushels	
Northwest	778	899	777	873	51	47	39,627	41,031
Northeast	627	683	626	676	49	44	30,674	29,744
West	766	799	765	777	46	48	35,190	37,570
Central	988	1,179	987	1,157	52	51	51,324	59,007
East	1,168	1,293	1,166	1,275	54	49	62,964	62,475
West Southwest	1,049	1,188	1,044	1,171	41	47	42,804	55,037
East Southeast	1,442	1,594	1,439	1,579	40	42	57,560	66,318
Southwest	804	841	801	830	27	45	21,627	37,350
Southeast	678	724	675	712	27	39	18,410	27,768
<b>ILLINOIS</b>	<b>8,300</b>	<b>9,200</b>	<b>8,280</b>	<b>9,050</b>	<b>43.5</b>	<b>46</b>	<b>360,180</b>	<b>416,300</b>



## MILK PRODUCTION

Milk production in Illinois during September 2008 totaled 145 million pounds, three million pounds below September 2007. The number of milk cows on farms averaged 102,000 head, down 1,000 head from September of last year. Milk per cow averaged 1,425 pounds for September, 15 pounds below September 2007.

Estimated milk production in the U.S. during September 2008 totaled 15.1 billion pounds, up two percent from September 2007. Production per cow averaged 1,631 pounds, nine pounds above September 2007. The number of milk cows on farms in the U.S. was 9.27 million head in September, one percent above September 2007.

## MILK PRODUCTION: ILLINOIS &amp; UNITED STATES, SEPTEMBER 2007-2008

		September					
		Illinois			United States		
		2007	2008	2008 as % of 2007	2007	2008	2008 as % of 2007
Milk Production:							
Number of milk cows	Head (000)	103	102	99	9,166	9,269	101
Milk production per cow	Lbs.	1,440	1,425	99	1,622	1,631	101
Total milk production	Mil. lbs.	148	145	98	14,871	15,118	102

# AGRICULTURAL PRICES

The October index of prices received by Illinois farmers for all commodities was 157 percent of the base, down 37 points from the revised September figure but eight points above October 2007. The current year's base was computed by multiplying the average production for the five-year period by the average price for each year. These five years were summed and then divided by five to arrive at an average (base) for the period. The current five-year average production was then multiplied by the current price and divided by the average for the five years to arrive at the current index. The October All Crops index, at 168 percent of the base, was down 46 points from the revised September number but eight points above October 2007. Crop prices decreased for all commodities except for alfalfa hay and other hay. The All Livestock index was at 116 percent of the base, down five points from the revised September number but five points above October 2007. Prices decreased for all livestock commodities. The hog-corn ratio was at 13.0.

The U.S. preliminary All Farm Products Index of Prices Received by Farmers in October, at 145 percent, based on 1990-92=100, decreased nine points from September. The Crop Index was down 17 points and the Livestock Index decreased five points. Producers received lower prices for corn, soybeans, wheat, and cattle and higher prices for sweet corn, broccoli, lettuce, and eggs. In addition to prices, the overall index was also affected by the seasonal change based on a three-year average mix of commodities producers sell. Increased monthly marketings of soybeans, corn, cottonseed, and cotton offset decreased marketings of milk, wheat, sweet corn, and grapes.

## INDEX OF PRICES RECEIVED BY FARMERS

Commodity	Sept. 2007	Oct. 2007	Sept. 2008	Oct. 15, 2008
<b>ILLINOIS</b>		2001-2005=100		2002-2006=100
All Farm Products	143	149	194 *	157
All Crops	151	160	214 *	168
Food grains	205	212	165 *	116
Feed grains/hay	149	159	226 *	179
Soybeans	150	158	200 *	157
All Livestock	116	111	121 *	116
Meat animals	110	104	119 *	116
Dairy products	150	145	133 *	120
<b>UNITED STATES</b>		1990-92=100		
All Farm Products	140	141	154 *	145
All Crops	142	149	174 *	157
Food grains	216	237	250 *	205
Feed grains/hay	150	148	219 *	177
Oilseeds	131	144	177 *	153
All Livestock	138	131	133 *	128
Meat animals	121	118	124 *	118
Dairy products	167	164	139 *	135
Prices Paid	162	163	191 *	188
Parity Ratio <sup>1/</sup>	87	86	81 *	77

<sup>1/</sup> Prices received index divided by prices paid index.

\* Revised.

## PRICES RECEIVED BY FARMERS <sup>1/</sup>

Commodity	Unit	Illinois				United States			
		Sept. 2007	Oct. 2007	Sept. 2008	Oct. 15, 2008	Sept. 2007	Oct. 2007	Sept. 2008	Oct. 15, 2008
Dollars									
Corn	Bushels	3.21	3.31	4.99 *	4.00	3.28	3.29	5.02 *	3.99
Soybeans	Bushels	8.15	8.65	11.40 *	9.00	8.15	8.36	10.70 *	8.66
Sorghum	Cwt.	6.63	6.42	<u>3/</u>	<u>3/</u>	6.17	6.18	8.21 *	5.75
Wheat, all	Bushels	6.16	6.68	5.25 *	4.00	6.76	7.65	7.43 *	5.79
Oats	Bushels	<u>3/</u>	<u>3/</u>	<u>3/</u>	<u>3/</u>	2.47	2.45	3.29 *	2.71
Hay, all baled	Tons	121.00	128.00	144.00	142.00	127.00	128.00	161.00 *	157.00
Alfalfa hay, bld	Tons	130.00	137.00	148.00	149.00	135.00	136.00	176.00 *	172.00
Other hay, bld	Tons	97.00	102.00	108.00	110.00	111.00	113.00	122.00 *	122.00
Hogs, all	Cwt.	45.10	41.50	52.50 *	52.00	46.80	42.40	52.70 *	50.70
Barrows, Gilts	Cwt.	46.00	42.80	53.00 *	52.50	47.20	43.10	52.80 *	50.80
Sows	Cwt.	35.00	26.00	47.00 *	46.50	37.00	27.30	50.10 *	48.40
Beef cattle	Cwt.	93.10	91.10	96.70 *	93.20	93.10	90.90	94.40 *	88.60
Cows	Cwt.	50.50	48.50	55.00 *	52.00	49.30	46.60	54.50 *	49.20
Steers, Heifers	Cwt.	94.00	92.00	97.50 *	94.00	98.30	96.60	99.30 *	93.80
Calves	Cwt.	119.00	107.00	109.00 *	96.00	126.00	123.00	113.00 *	108.00
Milk cows	Head	<u>2/</u>	1,980.00	<u>2/</u>	1,970.00	<u>2/</u>	2,020.00	<u>2/</u>	1,920.00
Milk, all	Cwt.	22.50	22.00	19.40 *	18.00	21.80	21.40	18.20 *	17.60
Milk, fluid	Cwt.	22.50	22.00	19.40	<u>3/</u>	21.80	21.40	18.20 *	17.70
Milk, mfg.	Cwt.	21.20	20.80	18.50	<u>3/</u>	20.10	19.60	17.50 *	17.40
Hog-corn ratio		14.0	12.5	10.5 *	13.0	14.3	12.9	10.5 *	12.7

<sup>1/</sup> Prices received represents the average of all grades or classes at point of first sale and should not be confused with market quotations.

<sup>2/</sup> Estimated in January, April, July and October.

<sup>3/</sup> State prices not published.

\* Revised.

Illinois Farm Report (ISSN 0273-8643) is published monthly in February, March, May, June, August, September, November and December; twice in January, April, July and October by the Illinois Dept. of Agriculture and USDA, NASS, Illinois Field Office, Room 54, Department of Agriculture Bldg., 801 Sangamon Ave., Springfield, Illinois 62702. For information on subscribing, send request to the above address. Periodical postage paid at Springfield, Illinois.  
Postmaster: Send Address Change to Illinois Farm Report, P.O. Box 19283, Springfield, Illinois 62794-9283.

## BIOTECHNOLOGY VARIETIES

### CORN & SOYBEAN BIOTECHNOLOGY VARIETIES, PERCENT OF ALL ACRES PLANTED: ILLINOIS & UNITED STATES, 2000-2008

	Corn				Soybeans	
	Insect Resistant (Bt)		All Biotech Varieties		Herbicide Resistant	
	Illinois	U.S.	Illinois	U.S.	Illinois	U.S.
	Percent					
2000	13	18	17	25	44	54
2001	12	18	16	26	64	68
2002	18	22	22	34	71	75
2003	23	25	28	40	77	81
2004	26	27	33	47	81	85
2005	25	26	36	52	81	87
2006	24	25	55	61	87	89
2007	19	21	74	73	88	91
2008	13	17	80	80	87	92

Brad Schwab, Mark Schleusener, Michael S. Clark, Agricultural Statisticians  
"Printed by authority of the State of Illinois" 11/12/08, 1,625, 1444

