

ILLINOIS FARM REPORT



NATIONAL AGRICULTURAL STATISTICS SERVICE

Illinois Field Office
P.O. Box 19283, Springfield, IL 62794-9283
Phone: (217)492-4295

U.S. DEPARTMENT OF AGRICULTURE
ILLINOIS DEPARTMENT OF AGRICULTURE
<http://www.nass.usda.gov>

RELEASED: JULY 1, 2009 IFR-09-09

VOL. 30, NO. 9

HIGHLIGHTS

ACREAGE
GRAIN STOCKS
HOGS AND PIGS
MILK PRODUCTION

THIS FARM REPORT CONTAINS THE RESULTS FROM THESE PROJECTS. THANK YOU FOR YOUR HELP.

*June Agricultural Report
June Hog Report
June Milk Production*

ACREAGE

Corn planted in Illinois in 2009 is estimated at 12.3 million acres, up 100 thousand acres from the March Prospective Plantings Report, and up 200 thousand acres from last year. Acreage planted to biotechnology varieties is estimated at 84 percent of the total acreage, up from 80 percent last year. Bt varieties account for 10 percent, herbicide resistant varieties account for 15 percent, and 59 percent of the total corn acres were planted to stacked-gene varieties. Acreage expected to be harvested for grain is currently estimated at 12.15 million. After extensive weather delays, conditions improved enough to allow producers to plant during the second half of May. Planting advanced from 20 percent on May 17 to 62 percent on May 24 to 82 percent on May 31. The crop was rated 12 percent excellent, 46 percent good, 31 percent fair, 8 percent poor, and 3 percent very poor as of June 28.

Acreage planted and to be planted to **soybeans** in Illinois in 2009 is estimated at 9.1 million acres, unchanged from the March intentions but 100 thousand below a year ago. Of the total acreage planted, an estimated 90 percent was planted with herbicide resistant varieties. Of the planted acres, 9.05 million are projected to be harvested. Only 34 percent of the acreage expected to be planted as of June 1, compared with the average of 82 percent for the last five years. As of June 28, 88 percent had been planted. The crop was rated 8 percent excellent, 47 percent good, 36 percent fair, 6 percent poor, and 3 percent very poor on June 28.

(Continued on page 2)

ACREAGE SUMMARY, 2008-2009

Crop	Illinois				United States			
	Planted acres		Acres for harvest		Planted acres		Acres for harvest	
	2008	2009	2008	2009	2008	2009	2008	2009
	Thousands							
Corn	12,100	12,300	11,900	12,150	85,982	87,035	78,640	80,107
Soybeans	9,200	9,100	9,100	9,050	75,718	77,483	74,641	76,547
Winter Wheat	1,200	850	1,150	820	46,281	43,448	39,614	34,787
Oats	45	45	30	30	3,217	3,158	1,395	1,426
Sorghum	80	60	76	58	8,284	6,960	7,271	5,968
Summer Potatoes	5.5	5.5	5.3	5.3	47.0	44.0	44.8	42.5
Alfalfa Hay	--	--	350	340	--	--	20,980	20,982
All Other Hay	--	--	270	260	--	--	39,082	39,195

CORN & SOYBEANS BY DISTRICTS, 2008-2009

District	Corn				Soybeans			
	Planted acres		Acres for grain		Planted acres		Acres for beans	
	2008	2009	2008	2009	2008	2009	2008	2009
	Thousands							
Northwest	2,060	1,952	2,036	1,921	860	962	853	958
Northeast	1,174	1,171	1,167	1,157	661	664	656	661
West	1,193	1,196	1,164	1,184	800	823	777	816
Central	1,787	1,734	1,772	1,719	1,075	1,141	1,063	1,135
East	1,715	1,742	1,700	1,725	1,284	1,260	1,276	1,255
West Southwest	1,694	1,803	1,679	1,781	1,173	1,075	1,154	1,067
East Southeast	1,506	1,604	1,448	1,579	1,662	1,597	1,650	1,589
Southwest	481	514	463	506	859	832	849	827
Southeast	490	584	471	578	826	746	822	742
ILLINOIS	12,100	12,300	11,900	12,150	9,200	9,100	9,100	9,050

ACREAGE - CONTINUED

An estimated 850 thousand acres of **winter wheat** were seeded in Illinois last fall, down 29 percent from the previous year. Harvested acreage is expected to total 820 thousand acres, down 29 percent from last year. As of June 28, 73 percent of the wheat crop was ripe, compared to 61 percent last year and 86 percent for the five-year average. Harvest is underway and was 46 percent complete by June 28, compared to 32 percent last year and 67 percent for the five-year average.

U.S. Corn planted area for all purposes is estimated at 87.0 million acres, up 1 percent from last year but 7 percent lower than 2007. This is the second largest acreage since 1946, behind 2007. Growers expect to harvest 80.1 million acres for grain, up 2 percent from last year. Farmers responding to the survey indicated that 97 percent of the intended corn acreage had been planted at the time of the interview compared with the 10-year average of 98 percent. Producers in the 10 major corn-producing States (Illinois, Indiana, Iowa, Kansas, Minnesota, Missouri, Nebraska, Ohio, South Dakota, and Wisconsin) planted 67.9 million acres of corn in 2009, up 3 percent from last year. Planting got off to a slow start in 2009, similar to last year, as cool, wet spring weather delayed fieldwork and planting activities in many areas. By late April, warmer weather in the Mississippi Valley and western Corn Belt helped accelerate fieldwork; however, planting was limited across much of the Midwest due to cool, soggy soils.

Soybean planted area for 2009 is estimated at a record high 77.5 million acres, up 2 percent from last year. Area for harvest, at 76.5 million acres, is up 3 percent from 2008, and will be the largest harvested area on record, if realized. Growers in the 11 major soybean-producing States (Arkansas, Illinois, Indiana, Iowa, Kansas, Minnesota, Missouri, Nebraska, North Dakota, Ohio, and South Dakota) planted 61.5 million acres, up 2 percent from 2008.

The 2009 **winter wheat** planted area, at 43.4 million acres, is 6 percent below last year but up 1 percent from the previous estimate. Of this total, about 31.4 million acres are Hard Red Winter, 8.4 million acres are Soft Red Winter, and 3.6 million acres are White Winter. States in the Corn Belt and Delta are all down from 2008, with Arkansas and Missouri down 600,000 and 450,000 acres, respectively. Acreage in Colorado, Oklahoma, and Texas is up a combined 1.15 million acres from 2008. Area harvested for grain is forecast at 34.8 million acres, down 12 percent from last year. Despite large increases in planted acres, harvested acres in Oklahoma and Texas are down 900,000 and 850,000, respectively, as both States have experienced below normal precipitation during the growing season.

WINTER WHEAT BY DISTRICTS, 2008-2009

District	Planted acres		Acres for grain	
	2008	2009	2008	2009
	Thousands			
Northwest	44	29	40.5	27
Northeast	52	47	45.0	46
West	69	38	66.0	36
Central	45	27	44.0	26
East	68	59	60.0	53
W. Southwest	170	120	167.5	118
E. Southeast	233	147	224.0	142
Southwest	320	256	310.0	247
Southeast	199	127	193.0	125
ILLINOIS	1,200	850	1,150.0	820

JUNE 1 GRAIN STOCKS

Stocks of corn in Illinois on June 1, 2009 were estimated at 816 million bushels, five percent above June 1, 2008. On-farm stocks were 330 million bushels, up ten percent from a year earlier. Off-farm stocks, at 486 million bushels, were up two percent. The March-May indicated disappearance was 565 million bushels, compared to the disappearance of 531 million bushels last year.

Soybean stocks were estimated at 90.9 million bushels on June 1, 2009, 19 percent below a year earlier. Soybean stocks have not been this low in June since 2004 when stocks were 68 million bushels. On-farm stocks totaled 36 million bushels, which compares to 31 million on June 1, 2008. Off-farm stocks totaled 54.9 million bushels, 32 percent below the previous year. The March-May indicated disappearance for stocks in all positions was 134.3 million bushels, 24 percent above the disappearance of 108.1 million bushels a year ago.

Wheat stocks on June 1, 2009 were estimated at 35.0 million bushels, up from 6.32 million bushels a year ago, and the highest level ever recorded for this time period. Off-farm stocks were 33.5 million bushels, 96 percent of the total stocks.

U.S. corn stocks in all positions on June 1, 2009 totaled 4.27 billion bushels, up 6 percent from June 1, 2008. Of the total stocks, 2.21 billion bushels are stored on farms, up 12 percent from a year earlier. Off-farm stocks, at 2.06 billion bushels, are up slightly from a year ago. The March - May 2009 indicated disappearance is 2.69 billion bushels, compared with 2.83 billion bushels during the same period last year.

Soybeans stored in all positions on June 1, 2009 totaled 597 million bushels, down 12 percent from June 1, 2008. On-farm stocks totaled 226 million bushels, down slightly from a year ago. Off-farm stocks, at 371 million bushels, are down 18 percent from the previous year. Indicated disappearance for the March - May 2009 quarter totaled 705 million bushels, down 7 percent from the same period a year earlier.

All wheat stored in all positions on June 1, 2009 totaled 667 million bushels, up 118 percent from a year ago. On-farm stocks are estimated at 141 million bushels, up 449 percent from last year. Off-farm stocks, at 526

million bushels, are up 88 percent from a year ago. The March - May 2009 indicated disappearance is 373 million bushels, down 7 percent from the same period a year earlier.

GRAIN STOCKS - JUNE 1, 2008-2009

Crop and position 1/	Illinois		United States	
	2008	2009	2008	2009
	Thousand bushels			
Corn				
On farms	300,000	330,000	1,970,900	2,205,400
Off farms	476,980	485,751	2,057,117	2,060,153
Total	776,980	815,751	4,028,017	4,265,553
Soybeans				
On farms	31,000	36,000	226,600	226,300
Off farms	81,149	54,900	449,543	370,744
Total	112,149	90,900	676,143	597,044
All Wheat				
On farms	70	1,500	25,635	140,745
Off farms	6,254	33,484	280,183	526,299
Total	6,324	34,984	305,818	667,044
Oats				
On farms	2/	2/	16,100	17,480
Off farms	176	2/	50,674	66,656
Total	2/	2/	66,774	84,136
Sorghum				
On farms	2/	2/	7,000	11,800
Off farms	686	1,024	94,019	89,064
Total	2/	2/	101,019	100,864

1/ Off farm stocks include stocks at mills, elevators, warehouses, terminals and processors.

2/ Data not published.

HOGS AND PIGS

The number of **hogs and pigs** on Illinois farms on June 1, 2009 was 4.30 million head, one percent less than a year earlier but one percent more than the March 1, 2009 inventory. Breeding hogs, at 480 thousand head, were up four percent from a year ago, but unchanged from last quarter. Market hogs, at 3.82 million head, were down two percent from June 2008 but up one percent from March 2009.

The Illinois March-May **pig crop**, at 2.328 million, was up eight percent from a year ago. There were 245 thousand sows that farrowed, up seven percent from the farrowings for the same time last year. Pigs per litter, at 9.50, was unchanged from the average of pigs saved per litter last quarter.

Illinois hog producers **intend to farrow** 490 thousand sows between June 1 and November 30, 2009. This would be five thousand farrowings less than during this period a year ago. Producers expect to farrow 245 thousand sows during the June-August quarter, up two percent from a year earlier. The first intentions estimate for farrowings during the September-November quarter is 245 thousand sows, down four percent from the number farrowed during that period in 2008.

U.S. inventory of all **hogs and pigs** on June 1, 2009 was 66.1 million head. This was down two percent from June 1, 2008 but up one percent

from March 1, 2009. Breeding inventory, at 5.97 million head, was down three percent from last year and down slightly from the previous quarter. Market hog inventory, at 60.1 million head, was down two percent from last year but up one percent from last quarter.

The March-May 2009 **pig crop**, at 28.5 million head, was down slightly from 2008 but up two percent from 2007. Sows farrowing during this period totaled 2.97 million head, down three percent from 2008 and down two percent from 2007. The sows farrowed during this quarter represented 50 percent of the breeding herd. The average pigs saved per litter was a record high 9.61 for the March-May 2009 period, compared to 9.38 last year. Pigs saved per litter by size of operation ranged from 7.40 for operations with 1-99 hogs and pigs to 9.70 for operations with more than 5,000 hogs and pigs.

Hog producers **intend** to have 2.97 million sows farrow during the June-August 2009 quarter, down three percent from the actual farrowings during the same period in 2008 and down five percent from 2007. Intended farrowings for September-November 2009, at 2.96 million sows, are down two percent from 2008 and down seven percent from 2007. The total number of hogs under contract owned by operations with over 5,000 head, but raised by contractees, accounted for 46 percent of the total U.S. hog inventory, up from 41 percent last year.

HOGS & PIGS: INVENTORY NUMBERS, JUNE 1, 2008-2009

	Illinois			Iowa			United States		
	2008	2009	2009 as % of 2008	2008	2009	2009 as % of 2008	2008	2009	2009 as % of 2008
Breeding	460	480	104	1,080	1,020	94	6,131	5,967	97
Market	3,890	3,820	98	18,320	18,580	101	61,269	60,112	98
Under 60 lbs.	1,400	1,360	97	5,430	5,380	99	22,197	21,673	98
60-119 lbs.	990	1,030	104	5,060	5,250	104	15,321	15,008	98
120-179 lbs.	850	790	93	4,450	4,530	102	12,892	12,584	98
180 lbs. & over	650	640	98	3,380	3,420	101	10,860	10,847	100
Total	4,350	4,300	99	19,400	19,600	101	67,400	66,079	98

HOGS & PIGS: FARROWINGS & PIG CROP, 2008-2009

	Illinois			Iowa			United States		
	2008	2009	2009 as % of 2008	2008	2009	2009 as % of 2008	2008	2009	2009 as % of 2008
Sows Farrowing	1,000 head		Percent	1,000 head		Percent	1,000 head		Percent
Dec.-Feb. <u>1/</u>	240	250	104	510	490	96	3,071	2,978	97
Mar.-May	230	245	107	520	485	93	3,052	2,971	97
Jun.-Aug.	240	245 <u>2/</u>	102	510	480 <u>2/</u>	94	3,075	2,974 <u>2/</u>	97
Sep.-Nov.	255	245 <u>2/</u>	96	510	480 <u>2/</u>	94	3,028	2,962 <u>2/</u>	98
Pig Crop									
Dec.-Feb. <u>1/</u>	2,220	2,375	107	4,692	4,704	100	28,387	28,230	99
Mar.-May	2,151	2,328	108	4,862	4,680	96	28,630	28,547	100
Pigs Per Litter	Number			Number			Number		
Dec.-Feb. <u>1/</u>	9.25	9.50	--	9.20	9.60	--	9.24	9.48	--
Mar.-May	9.35	9.50	--	9.35	9.65	--	9.38	9.61	--

1/ December of prior year.

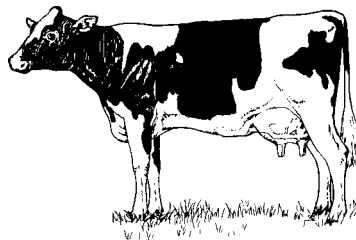
2/ Intentions.

Illinois Farm Report (ISSN 0273-8643) is published monthly in February, March, May, June, August, September, November and December; twice in January, April, July and October by the Illinois Dept. of Agriculture and USDA, NASS, Illinois Field Office, Room 54, Department of Agriculture Bldg., 801 Sangamon Ave., Springfield, Illinois 62702. For information on subscribing, send request to the above address. Periodical postage paid at Springfield, Illinois.
Postmaster: Send Address Change to Illinois Farm Report, P.O. Box 19283, Springfield, Illinois 62794-9283.

MILK PRODUCTION

Milk production in Illinois during May 2009 totaled 170 million pounds, equal to May 2008. The number of milk cows on farms averaged 102,000 head for May 2009, equal to last year. Milk per cow averaged 1,670 pounds, five pounds above May 2008.

Estimated milk production in the U.S. during May 2009 totaled 16.73 billion pounds, up 23 million pounds from May 2008. Production per cow averaged 1,804 pounds for May 2009, 11 pounds above May 2008. The number of milk cows on farms in the U.S. was 9.275 million head in May 2009, a decrease of 43,000 head from May 2008.



MILK PRODUCTION: ILLINOIS & UNITED STATES, MAY 2008-2009

		May					
		Illinois			United States		
		2008	2009	2009 as % of 2008	2008	2009	2009 as % of 2008
Milk Production:							
Number of milk cows	Head (000)	102	102	100	9,318	9,275	100
Milk production per cow	Lbs.	1,665	1,670	100	1,793	1,804	101
Total milk production	Mil. lbs.	170	170	100	16,707	16,730	100

Brad Schwab, Mark Schleusener, Michael S. Clark, Agricultural Statisticians
"Printed by authority of the State of Illinois" 7/1/09, 3,675, 1399

