

# ILLINOIS FARM REPORT



**NATIONAL AGRICULTURAL STATISTICS SERVICE**

Illinois Field Office  
P.O. Box 19283, Springfield, IL 62794-9283  
Phone: (217)492-4295

**U.S. DEPARTMENT OF AGRICULTURE**  
**ILLINOIS DEPARTMENT OF AGRICULTURE**  
<http://www.nass.usda.gov>

RELEASED: NOVEMBER 12, 2009 IFR-09-15

VOL. 30, NO. 15

**HIGHLIGHTS**  
NOVEMBER CROP REPORT  
MILK PRODUCTION  
AGRICULTURAL PRICES  
BIOTECHNOLOGY VARIETIES

THIS FARM REPORT CONTAINS THE RESULTS FROM THESE SURVEYS. THANK YOU FOR YOUR HELP.

*November Ag Yield Report  
October Milk Report  
October Prices Received*

## NOVEMBER CROP REPORT

As of November 1, the Illinois corn for grain yield for 2009 was estimated at 175 bushels per acre, down four bushels from the October 1 forecast. At this level, total production for the state would reach 2.07 billion bushels, three percent below the 2008 production. Harvest of the crop was only 19 percent complete by November 1 compared to 63 percent in 2008 and 86 percent for the five-year average. This was the latest harvest progress since 1967 when only ten percent had been harvested. Abundant rainfall throughout October halted most field activities resulting in the late harvest.

The estimated yield for the Illinois soybean crop was 45 bushels per acre, one bushel above the October 1 forecast. Production is expected to total 420.8 million bushels, two percent below last year's production. This October was the second wettest on record behind 1941, with a statewide precipitation of 8.9 inches, six inches above normal. As of November 1, 35 percent of the soybeans had been harvested, compared to 88 percent last year and 92 percent for the five-year average. This soybean harvest progress was the second latest on record, trailing only 1941, when 21 percent was harvested as of November 1.

U.S. corn production is forecast at 12.9 billion bushels, down one percent from last month but seven percent higher than 2008. Based on conditions as of November 1, yields are expected to average 162.9 bushels per acre, down 1.3 bushels from October but 9.0 bushels above last year. Despite the drop in yield from October, this yield will be the highest on record, if realized. Total production will be second highest on record, only behind 2007. Within the Corn Belt, forecasted yields in Minnesota and Wisconsin increased, while Illinois, Iowa, and Michigan yields decreased.

Soybean production is forecast at a record high 3.32 billion bushels, up two percent from the October forecast and up 12 percent from last year. Based on November 1 conditions, yields are expected to average 43.3 bushels per acre, up 0.9 bushel from last month and up 3.6 bushels from 2008. If realized, this will be the highest U.S. yield on record. Compared with last month, yields are forecast higher or unchanged in all states except Arkansas, Georgia, Iowa, Mississippi, and Texas. Increases of 3 bushels are expected in Delaware, Indiana, Kansas, and Maryland. The largest decrease in yield from the October forecast is expected in Mississippi where excessive rain during October hindered yield expectations. Area for harvest in the U.S. is forecast at 76.6 million acres, unchanged from last month but up three percent from 2008.

### CROPS ACREAGE & PRODUCTION, 2008-2009

Crop (Acres for harvest)	Illinois		United States	
	2008	2009	2008	2009
Acreage and production in thousands				
Corn, Grain				
Acres	11,900	11,800	78,640	79,294
Yield, bu.	179.0	175.0	153.9	162.9
Production	2,130,100	2,065,000	12,101,238	12,920,928
Soybeans				
Acres	9,120	9,350	74,681	76,619
Yield, bu.	47.0	45.0	39.7	43.3
Production	428,640	420,750	2,967,007	3,319,270
Sorghum,				
Acres	76	38	7,271	5,681
Yield, bu.	103.0	90.0	65.0	64.0
Production	7,828	3,420	472,342	363,810
Winter Wheat, Grain				
Acres	1,150	820	39,608	34,485
Yield, bu.	64.0	56.0	47.1	44.2
Production	73,600	45,920	1,867,333	1,522,718
Oats, Grain				
Acres	30	25	1,400	1,379
Yield, bu.	70.0	65.0	63.7	67.5
Production	2,100	1,625	89,135	93,081
Alfalfa Hay				
Acres	350	340	20,980	20,982
Yield, tons	3.90	3.80	3.32	3.43
Production	1,365	1,292	69,620	71,977
All Other Hay				
Acres	270	260	39,082	39,195
Yield, tons	1.90	2.40	1.95	2.06
Production	513	624	76,052	80,752
Apples				
Mil. lbs.	46.2	45.0	9,769.3	10,016.0
Peaches				
Mil. lbs.	8,730	10,000	1,133,310	1,078,340
Snap Beans 1/				
Acres	12,500	13,600	194,730	193,400
Yield, tons	3.59	3.50	4.07	4.17
Production	44,820	47,600	794,777	806,920
Sweet Corn 1/				
Acres	2/	2/	353,950	384,150
Yield, tons	2/	2/	7.85	8.22
Production	2/	2/	2,784,780	3,157,560

1/ Contract for processing only. Acreage and production are actual and not in thousands. 2/ Not published.

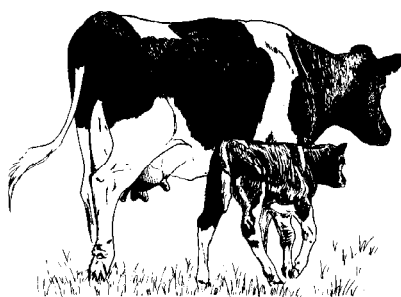
## ILLINOIS DISTRICT ESTIMATES

## CORN, 2008-NOVEMBER 1, 2009

District	Acres planted		Acres for grain		Yield		Production	
	2008	2009	2008	2009	2008	2009	2008	2009
	1,000 acres		1,000 acres		Bushels		1,000 bushels	
Northwest	2,060	2,033	2,036	1,999	184	176	374,612.3	351,824
Northeast	1,174	1,132	1,167	1,094	183	172	213,570.4	188,168
West	1,193	1,173	1,164	1,162	193	180	224,651.5	209,160
Central	1,787	1,767	1,772	1,752	193	196	341,993.2	343,392
East	1,715	1,758	1,700	1,738	177	173	300,897.2	300,674
West Southwest	1,694	1,733	1,679	1,719	174	177	292,147.2	304,263
East Southeast	1,506	1,469	1,448	1,426	165	167	238,920.4	238,142
Southwest	481	447	463	429	156	129	72,230.8	55,341
Southeast	490	488	471	481	151	154	71,077.0	74,036
<b>ILLINOIS</b>	<b>12,100</b>	<b>12,000</b>	<b>11,900</b>	<b>11,800</b>	<b>179</b>	<b>175</b>	<b>2,130,100.0</b>	<b>2,065,000</b>

## SOYBEANS, 2008-NOVEMBER 1, 2009

District	Acres planted		Acres for harvest		Yield		Production	
	2008	2009	2008	2009	2008	2009	2008	2009
	1,000 acres		1,000 acres		Bushels		1,000 bushels	
Northwest	860	903	855	898	47	47	40,185	42,206
Northeast	661	703	657	701	46	45	30,222	31,545
West	800	847	779	841	50	46	38,950	38,686
Central	1,075	1,091	1,065	1,085	51	51	54,315	55,335
East	1,284	1,258	1,279	1,253	48	50	61,392	62,650
West Southwest	1,173	1,183	1,156	1,174	48	46	55,488	54,004
East Southeast	1,662	1,709	1,654	1,701	46	42	76,009	71,032
Southwest	859	896	851	891	45	38	38,295	33,858
Southeast	826	810	824	806	41	39	33,784	31,434
<b>ILLINOIS</b>	<b>9,200</b>	<b>9,400</b>	<b>9,120</b>	<b>9,350</b>	<b>47</b>	<b>45</b>	<b>428,640</b>	<b>420,750</b>



## MILK PRODUCTION

Milk production in Illinois during September 2009 totaled 151 million pounds, an increase of six million pounds from September 2008. The number of milk cows on farms averaged 102,000 head for September 2009, equal to last year. Milk per cow averaged 1,480 pounds, 55 pounds above September 2008.

Estimated milk production in the U.S. during September 2009 totaled 15.0 billion pounds, down 103 million pounds from September 2008. Production per cow averaged 1,647 pounds for September 2009, 24 pounds above September 2008. The number of milk cows on farms in the U.S. was 9.13 million head in September 2009, a decrease of 197,000 head from September 2008.

## MILK PRODUCTION: ILLINOIS &amp; UNITED STATES, SEPTEMBER 2008-2009

		September					
		Illinois			United States		
		2008	2009	2009 as % of 2008	2008	2009	2009 as % of 2008
Milk Production:							
Number of milk cows	Head (000)	102	102	100	9,323	9,126	98
Milk production per cow	Lbs.	1,425	1,480	104	1,623	1,647	101
Total milk production	Mil. lbs.	145	151	104	15,129	15,026	99

# AGRICULTURAL PRICES

The October index of prices received by Illinois farmers for all commodities was 136 percent of the base, up two points from the revised September figure but 33 points below October 2008. The current year's base was computed by multiplying the average production for the five-year period by the average price for each year.

These five years were summed and then divided by five to arrive at an average (base) for the period. The current five-year average production was then multiplied by the current price and divided by the average for the five years to arrive at the current index. The October All Crops index, at 148 percent of the base, was up one point from the revised September number but 36 points below October 2008. Crop prices increased for all commodities except for hay. The All Livestock index was at 88 percent of the base, up three points from the revised September number but 26 points below October 2008. Prices increased for hogs and milk, but declined for cattle. The hog-corn ratio was at 11.5.

The U.S. preliminary All Farm Products Index of Prices Received by Farmers in October, at 135 percent, based on 1990-92=100, increased nine points from September. The Crop Index was up 11 points and the Livestock Index increased one point. Producers received higher prices for lettuce, corn, milk, and broccoli and lower prices for broilers, cattle, snap beans, and cucumbers. In addition to prices, the overall index was also affected by the seasonal change based on a three-year average mix of commodities producers sell. Increased monthly marketings of soybeans, corn, cotton, and cottonseed offset decreased marketings of milk, wheat, grapes, and sweet corn.

## INDEX OF PRICES RECEIVED BY FARMERS

Commodity	Sept.	Oct.	Sept.	Oct. 15,
	2008	2008	2009	2009
ILLINOIS	2002-2006=100		2003-2007=100	
All Farm Products	194	169	134 *	136
All Crops	214	184	147 *	148
Food grains	165	127	88 *	85
Feed grains/hay	225	191	139 *	144
Soybeans	200	176	161 *	159
All Livestock	121	114	85 *	88
Meat animals	119	111	87 *	89
Dairy products	133	127	78 *	83
UNITED STATES	1990-92=100			
All Farm Products	154	150	126 *	135
All Crops	174	168	143 *	154
Food grains	249	231	159 *	168
Feed grains/hay	218	193	144 *	153
Oilseeds	178	174	158 *	166
All Livestock	133	127	108 *	109
Meat animals	124	116	103 *	102
Dairy products	139	136	99 *	106
Prices Paid	190	187	175 *	175
Parity Ratio 1/	81	80	72 *	77

1/ Prices received index divided by prices paid index.  
\* Revised.

## PRICES RECEIVED BY FARMERS 1/

Commodity	Unit	Illinois				United States			
		Sept. 2008	Oct. 2008	Sept. 2009	Oct. 15, 2009	Sept. 2008	Oct. 2008	Sept. 2009	Oct. 15, 2009
Dollars									
Corn	Bushels	4.99	4.29	3.27 *	3.50	5.01	4.37	3.25 *	3.54
Soybeans	Bushels	11.40	10.10	10.10 *	10.20	10.80	9.95	9.75 *	9.74
Sorghum	Cwt.	3/	5.63	3/	3/	7.99	6.89	5.63 *	5.57
Wheat, all	Bushels	5.25	4.37	3.25 *	3.40	7.43	6.65	4.48 *	4.56
Oats	Bushels	3/	3/	3/	3/	3.29	3.26	1.81 *	1.80
Hay, all baled	Tons	144.00	142.00	122.00	113.00	161.00	156.00	107.00 *	106.00
Alfalfa hay, bld	Tons	148.00	149.00	126.00	126.00	175.00	171.00	110.00 *	109.00
Other hay, bld	Tons	108.00	110.00	88.00	88.00	121.00	118.00	100.00 *	98.50
Hogs, all	Cwt.	52.50	49.80	39.60 *	40.40	52.60	48.50	37.70 *	37.20
Barrows, Gilts	Cwt.	53.00	50.50	41.20 *	41.70	52.70	48.70	38.30 *	37.70
Sows	Cwt.	47.00	41.50	21.30 *	25.20	49.80	45.10	23.90 *	27.30
Beef cattle	Cwt.	96.70	90.20	82.00 *	80.70	94.20	87.40	80.60 *	78.90
Cows	Cwt.	55.00	51.00	43.90 *	43.50	54.80	48.40	44.40 *	43.70
Steers, Heifers	Cwt.	97.50	91.00	82.80 *	81.50	99.30	92.90	85.50 *	84.00
Calves	Cwt.	109.00	95.00	97.10 *	91.00	113.00	106.00	107.00 *	103.00
Milk cows	Head	2/	1,970.00	2/	1,350.00	2/	1,920.00	2/	1,240.00
Milk, all	Cwt.	19.40	19.00	13.10 *	14.00	18.20	17.80	12.90 *	13.80
Milk, fluid	Cwt.	19.40	19.00	13.10	3/	18.20	17.80	12.90 *	13.80
Milk, mfg.	Cwt.	18.50	19.00	13.20	3/	17.50	18.00	12.20 *	13.00
Hog-corn ratio		10.5	11.6	12.1 *	11.5	10.5	11.1	11.6 *	10.5

1/ Prices received represents the average of all grades or classes at point of first sale and should not be confused with market quotations.

2/ Estimated in January, April, July and October.

3/ State prices not published.

\* Revised.

Illinois Farm Report (ISSN 0273-8643) is published monthly in February, March, May, June, August, September, November and December; twice in January, April, July and October by the Illinois Dept. of Agriculture and USDA, NASS, Illinois Field Office, Room 54, Department of Agriculture Bldg., 801 Sangamon Ave., Springfield, Illinois 62702. For information on subscribing, send request to the above address. Periodical postage paid at Springfield, Illinois.

Postmaster: Send Address Change to Illinois Farm Report, P.O. Box 19283, Springfield, Illinois 62794-9283.

## BIOTECHNOLOGY VARIETIES

CORN & SOYBEAN BIOTECHNOLOGY VARIETIES,  
PERCENT OF ALL ACRES PLANTED: ILLINOIS & UNITED STATES, 2000-2009

	Corn				Soybeans	
	Insect Resistant (Bt)		All Biotech Varieties		Herbicide Resistant	
	Illinois	U.S.	Illinois	U.S.	Illinois	U.S.
	Percent					
2000	13	18	17	25	44	54
2001	12	18	16	26	64	68
2002	18	22	22	34	71	75
2003	23	25	28	40	77	81
2004	26	27	33	47	81	85
2005	25	26	36	52	81	87
2006	24	25	55	61	87	89
2007	19	21	74	73	88	91
2008	13	17	80	80	87	92
2009	10	17	84	85	90	91

Brad Schwab, Mark Schleusener, Michael S. Clark, Agricultural Statisticians  
"Printed by authority of the State of Illinois" 11/12/09, 1,450, 1444

