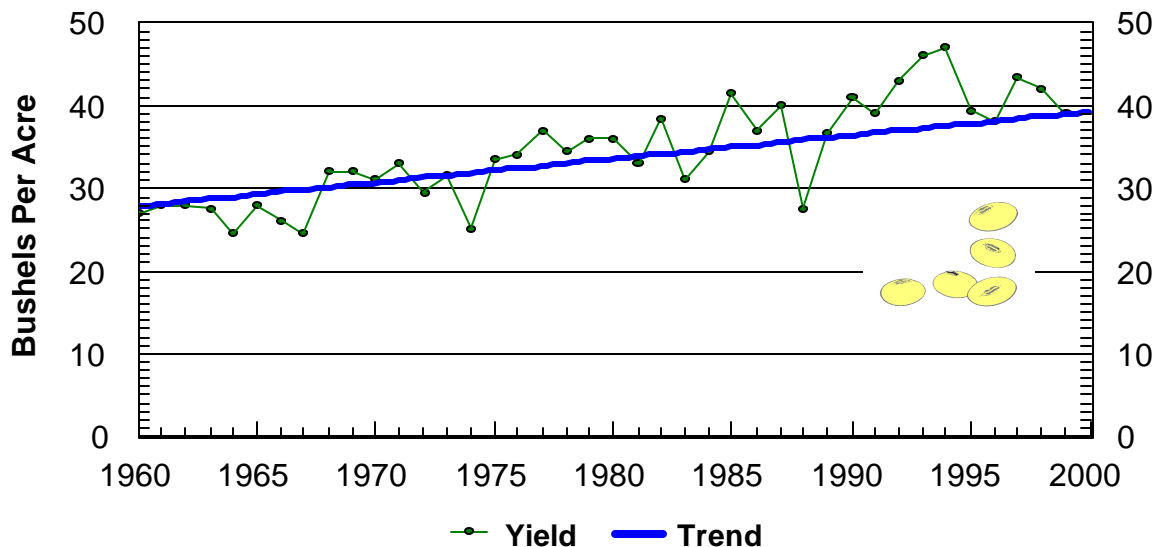


CROP SUMMARY

SOYBEAN FORECAST AND FINAL YIELD INDIANA, 1975-1999

Year	August Forecast	September Forecast	October Forecast	November Forecast	Final Yield Per Acre
	Yield (Bu)	Yield (Bu)	Yield (Bu)	Yield (Bu)	(Bushels)
1975	32.0	32.0	32.0	33.5	33.5
1976	34.0	34.0	33.0	33.0	34.0
1977	33.0	33.0	33.0	35.0	37.0
1978	31.0	32.0	33.0	33.0	34.5
1979	36.0	36.0	36.0	36.0	36.0
1980	34.0	34.0	34.0	35.0	36.0
1981	32.0	33.0	33.0	33.0	33.0
1982	41.0	40.0	40.0	40.0	38.5
1983	33.0	28.0	30.0	30.0	31.0
1984	35.0	36.0	35.0	34.0	34.5
1985	35.0	38.0	40.0	41.0	41.5
1986	40.0	39.0	39.0	38.0	37.0
1987	42.0	41.0	40.0	40.0	40.0
1988	29.0	30.0	30.0	28.0	27.5
1989	39.0	39.0	39.0	39.0	36.5
1990	36.0	37.0	39.0	41.0	41.0
1991	35.0	35.0	38.0	39.0	39.0
1992	41.0	41.0	41.0	42.0	43.0
1993	45.0	47.0	47.0	45.0	46.0
1994	43.0	43.0	46.0	46.0	47.0
1995	43.0	44.0	40.0	39.0	39.5
1996	35.0	35.0	38.0	39.0	38.0
1997	44.0	42.0	42.0	44.0	43.5
1998	45.0	45.0	42.0	42.0	42.0
1999	41.0	40.0	39.0	38.0	39.0

Indiana Soybean Yield Trend Indiana 1960 - 1999



Source: Indiana Ag Statistics Service