



Iowa Ag News – Cattle on Feed

Iowa Field Office · 210 Walnut Street Ste 833 · Des Moines IA 50309 · (515) 284-4340 · (800) 772-0825
fax (515) 284-4342 or (800) 719-1794 · www.nass.usda.gov/ia

Cooperating with the Iowa Department of Agriculture and Land Stewardship

December 16, 2011

Media Contact: Greg Thessen

Correction made to the Iowa data on 12-19-11

Cattle and calves on feed for slaughter market in Iowa for all feedlots totaled 1.31 million head on December 1, 2011, according to the *Cattle on Feed* report released by USDA, National Agricultural Statistics Service. The inventory was up 11 percent from November 1, 2011 and up 2 percent from December 1, 2010. Feedlots with a capacity greater than 1,000 head had 610,000 head on feed, up 7 percent from last month but down 3 percent from last year. Feedlots with a capacity less than 1,000 head had 700,000 head on feed, up 15 percent from last month and up 7 percent from last year.

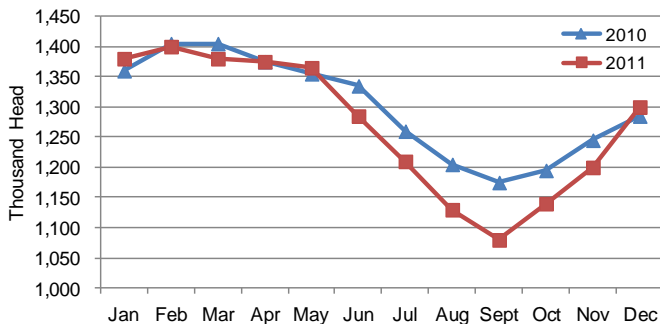
Placements during November totaled 318,000 head, an increase of 19 percent from last month and up 39 percent from last year. Feedlots with a capacity greater than 1,000 head placed 138,000 head, up 9 percent from last month and up 21 percent from last year. Feedlots with a capacity less than 1,000 head placed 180,000 head. This is up 29 percent from last month and up 57 percent from last year.

Marketings for November were 180,000 head, down 19 percent from last month but unchanged from last year. Feedlots with a capacity greater than 1,000 head marketed 95,000 head, down 24 percent from last month but up 6 percent from last year. Feedlots with a capacity less than 1,000 head marketed 85,000 head, down 13 percent from last month and down 6 percent from last year. **Other disappearance** totaled 8,000 head.

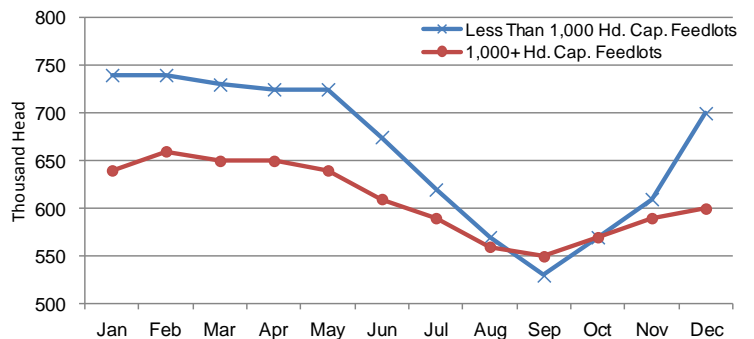
All Cattle on Feed, Iowa

Item	Lots 1,000+ Head	Lots Less than 1,000 Head	All Lots
	(1,000 Head)	(1,000 Head)	(1,000 Head)
Cattle on Feed, November 1, 2011	570	610	1,180
November Placements	138	180	318
November Marketings	95	85	180
November Other Disappearance	3	5	8
Cattle on Feed, December 1, 2011	610	700	1,310

Cattle on Feed, Inventory on all Feedlots, Iowa: 2010-2011



Cattle on Feed, Inventory by Feedlot Capacity, Iowa: 2011



Cattle on Feed: Number on Feed, Placements, Marketings, and Other Disappearance by Month, 1,000+ Capacity Feedlots

[Cattle and calves on feed are animals for slaughter market being fed a ration of grain or other concentrates and are expected to produce a carcass that will grade select or better.]

State	Cattle on Feed December 1			Placements during November			Marketings during November			November Disappearance other than Slaughter ¹		
	2010	2011	'11 as % of '10	2010	2011	'11 as % of '10	2010	2011	'11 as % of '10	2010	2011	'11 as % of '10
	(1,000 Head)	(1,000 Head)	(Percent)	(1,000 Head)	(1,000 Head)	(Percent)	(1,000 Head)	(1,000 Head)	(Percent)	(1,000 Head)	(1,000 Head)	(Percent)
Arizona	249	291	117	22	27	123	23	27	117	1	1	100
California	470	510	109	69	68	99	55	48	87	4	5	125
Colorado	1,090	1,160	106	155	175	113	150	145	97	5	10	200
Idaho	235	235	100	52	46	88	35	35	100	2	1	50
Iowa	630	610	97	114	138	121	90	95	106	4	3	75
Kansas	2,360	2,360	100	375	375	100	400	395	99	15	20	133
Nebraska	2,460	2,560	104	445	480	108	395	375	95	10	15	150
Oklahoma	380	385	101	60	60	100	63	61	97	2	4	200
South Dakota ..	255	265	104	62	70	113	36	41	114	1	4	400
Texas	2,840	3,010	106	475	475	100	440	450	102	15	35	233
Washington	214	236	110	54	54	100	36	43	119	1	1	100
Other States ...	437	459	105	76	71	93	51	55	108	2	3	150
United States .	11,620	12,081	104	1,959	2,039	104	1,774	1,770	100	62	102	165

¹Includes death loss, movement from feedlots to pasture, and shipments to other feedlots for further feeding.

United States Cattle on Feed

Cattle and calves on feed for slaughter market in the United States for feedlots with capacity of 1,000 or more head totaled 12.1 million head on December 1, 2011. The inventory was 4 percent above December 1, 2010. This is the second highest December 1 inventory since the series began in 1996.

Placements in feedlots during November totaled 2.04 million, 4 percent above 2010. Net placements were 1.94 million head. During November, placements of cattle and calves weighing less than 600 pounds were 755,000, 600-699 pounds were 499,000, 700-799 pounds were 375,000, and 800 pounds and greater were 410,000.

Marketings of fed cattle during November totaled 1.77 million, slightly below 2010.

Other disappearance totaled 102,000 during November, 65 percent above 2010.

Cattle on Feed Inventory on 1,000+ Capacity Feedlots – United States

