



**NATIONAL  
AGRICULTURAL  
STATISTICS  
SERVICE**

# KENTUCKY WEEKLY CROP & WEATHER REPORT



In Cooperation with:  
Univ. of Ky - Agr'l Weather Center  
U.S. Dept. of Commerce - NOAA  
Kentucky Department of Agriculture  
Cooperative Extension Service

**USDA, NASS, Kentucky Field Office**  
PO Box 1120  
Louisville, Kentucky 40201-1120  
(502) 582-5293 or 1-800-928-5277

**LELAND E. BROWN, Director**

*Released weekly April - November*

Issued 4:00 P.M., July 16, 2007

JMB 17-07

**AGRICULTURAL NEWS:** The State received scattered rains this week, which helped crops, but more rain is needed to maintain good development for all crops. Despite receiving rain this past week, three quarters of the State are still considered to be in a moderate drought. **Topsoil moisture** was rated 29 percent very short, 36 percent short, 33 percent adequate, and 2 percent surplus. **Subsoil moisture** was rated 42 percent very short, 34 percent short, 23 percent adequate, and 1 percent surplus. There were 5.6 days suitable for fieldwork. Work in the fields this past week included mowing field borders, topping tobacco, and spraying for insect and diseases. Very little insect and disease presence in crops was reported.

**TOBACCO:** Fourteen percent of the burley tobacco was blooming or has bloomed, while 6 percent had been topped. The dark tobacco blooming or beyond was at 21 percent, behind the previous year's 29 percent and the five year average of 26 percent. The tobacco crop condition was reported as 8 percent very poor, 17 percent poor, 31 percent fair, 36 percent good, and 8 percent excellent. Black shank continues to be the minor problem in tobacco.

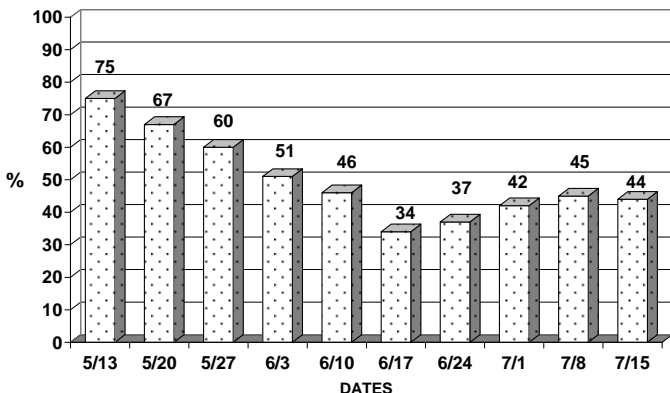
**CORN:** As of Sunday, July 15 eighty-one percent of the corn has silked or was silking, ahead of last

year's 74 percent and the five year average of 71 percent. Thirty-two percent of the corn was in the milk stage, also ahead of last year's 26 percent and the five year average of 31 percent. The corn condition was rated as 9 percent very poor, 10 percent poor, 25 percent fair, 36 percent good, and 20 percent excellent.

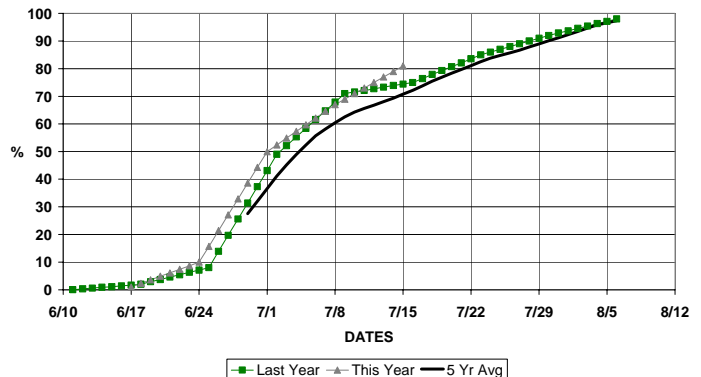
**SOYBEANS:** As of Sunday, July 15 forty-six percent of the soybeans were blooming. This is ahead of the previous year's 40 percent, and the five year average of 32 percent. Ten percent of the soybeans were setting pods, behind last year's 15 percent, but comparable to the five year average of 9 percent. The soybean condition was rated as 7 percent very poor, 12 percent poor, 22 percent fair, 35 good, and 24 percent excellent.

**OTHER CROPS AND PASTURE:** The pastures and hay fields are still very slow to recover, even with the recent rains. The pasture condition was rated as 21 percent very poor, 34 percent poor, 33 percent fair, and 12 percent good. The hay crop condition was rated as 22 percent very poor, 36 percent poor, 36 percent fair, and 6 percent good. The lack of consistent rain has resulted in neither crop receiving a rating of excellent for the past week.

**BURLEY TOBACCO CONDITION**  
% Good to Excellent



**CORN PERCENT SILKED**



**KENTUCKY CROP PROGRESS**  
WEEK ENDING JULY 15, 2007

Crop Stage	This Week	Previous Year	5-Yr. Avg.	Previous Week	
				KY	U.S.
Percentage					
Corn					
Silking	81	74	71	67	32
Milk Stage	32	26	31	NA	NA
Soybeans					
Blooming	46	40	32	23	40
Setting Pods	10	15	9	NA	NA
Burley Tobacco					
Blooming	14	NA	NA	NA	NA
Topped	6	6	4	NA	NA
Dark Tobacco					
Blooming	21	29	26	NA	NA

(NA)Data Not Available.

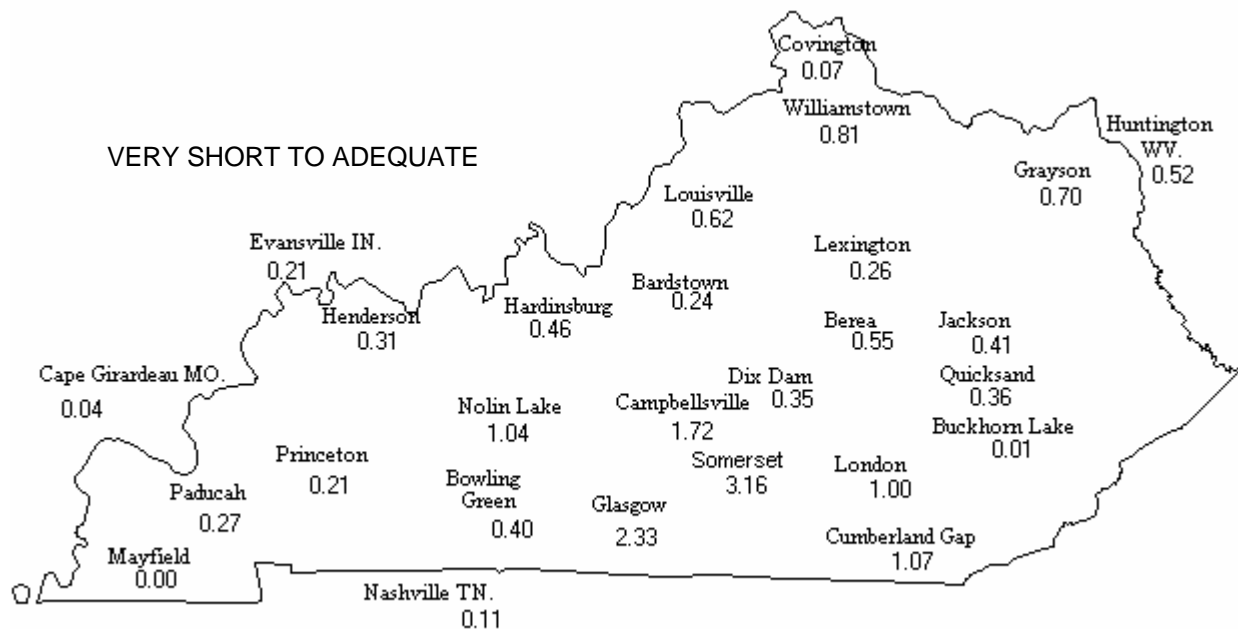
**SOIL MOISTURE**  
WEEK ENDING JULY 15, 2007

	This Week	Previous Week
<b>TOPSOIL</b>		
Very Short	29	25
Short	36	30
Adequate	33	41
Surplus	2	4
<b>SUBSOIL</b>		
Very Short	42	32
Short	34	36
Adequate	23	30
Surplus	1	2

**KENTUCKY CROP CONDITIONS (Percent)**

CROP	WEEK ENDING JULY 15, 2007					WEEK ENDING JULY 8, 2007				
	VERY POOR	POOR	FAIR	GOOD	EXCEL-LENT	VERY POOR	POOR	FAIR	GOOD	EXCEL-LENT
Corn	9	10	25	36	20	6	11	24	43	16
Soybeans	7	12	22	35	24	5	10	25	43	17
Pasture	21	34	33	12	0	21	34	32	12	1
Tobacco	8	17	31	36	8	8	15	32	37	8
Hay Crops	22	36	36	6	0	22	34	35	8	1

**PRECIPITATION MAP AND TOPSOIL MOISTURE DELINEATION**  
WEEK ENDING JULY 15, 2007



# **KENTUCKY WEATHER SUMMARY, JULY 9 – 15, 2007:**

## **Below Normal Temperature and Below Normal Rainfall:**

Scattered showers and thunderstorms provided most locations with measurable rainfall last week, with the south central section of the State receiving locally heavy rainfall of 2 to 3 inches. Moderate hydrologic drought continued to hold a grip over three-quarters of the State with Severe drought conditions in the south and east; nearly 50 percent of the State, according to the latest U.S. Drought Monitor. Several counties in the southeast continued in Extreme hydrologic drought. Improving conditions were indicated in the far western counties and along the Ohio River from Fulton County to Jefferson County.

Temperatures for the 7 day period averaged 76 degrees across the State which was 1 degree below normal and similar to the previous week. High temperatures averaged from 87 in the West to 86 in the East. Departure from normal high temperatures ranged from 2 degrees below normal in the West to near normal in the East. Low temperatures averaged from 65 degrees in the West to 64 degrees in the East. Departure from normal low temperature ranged from 1 degree below normal in the West to 1 degree below normal in the East.

Rainfall for the period totaled 0.69 inches statewide which was 0.31 inches below normal. Rainfall totals by climate division, West 0.45 inches, Central 0.91 inches, Bluegrass 0.47 inches and East 0.86 inches, which was 0.40, 0.09, 0.59 and 0.22 inches respectively below normal. By station, precipitation totals ranged from a low of 0.00 inches at Mayfield to a high of 3.16 inches at Somerset.

Tom Priddy

## **KENTUCKY TEMPERATURES AND RAINFALL FOR WEEK ENDING SUNDAY, JULY 15, 7:00 P.M.**

Weather Station	Rainfall			Deviation From		Air Temperature				Growing Degree Days		
	Last Week	Since April 1	Last Four Wks	Norm Since Apr. 1	Norm Last 4 Wks	High	Low	Wkly. Avg.	Dev. From Norm	Last Week	Since Apr. 1	Dev. Since Apr. 1
		(Inches)						(Degrees Fahrenheit)				
Bardstown	0.24	11.03	4.31	-3.40	+0.30	90	56	74.6	-2	165	1947	+162
Berea	0.55	10.60	3.48	-4.56	-0.37	91	58	76.0	+1	175	1952	+121
Bowling Green	0.40	10.31	3.04	-5.41	-1.06	94	60	78.1	+2	185	2059	+198
Bristol	0.56	7.14	2.91	-5.69	-0.71	94	56	73.9	-1	160	1789	+110
Buckhorn Lake	0.01	5.33	0.36	-9.02	-3.78	91	58	75.6	+0	172	1937	+333
Cape Girardeau	0.04	9.18	2.57	-5.62	-0.65	91	57	75.6	-2	171	2033	+81
Campbellsville	1.72	13.93	4.37	-2.76	-0.03	92	56	75.8	-0	171	1949	+148
Covington	0.07	6.87	2.48	-7.05	-1.24	90	53	74.3	-1	164	1831	+197
Cumberland Gap	1.07	10.04	3.66	-5.66	-0.74	91	58	75.6	+0	172	1940	+291
Dix Dam	0.35	10.56	3.07	-4.47	-0.92	90	57	75.2	-0	171	1906	+121
Evansville	0.21	9.87	2.49	-4.34	-0.98	92	59	77.9	-0	185	2006	+160
Glasgow	2.33	13.39	5.77	-3.39	+1.21	94	57	76.9	+1	176	2047	+276
Grayson	0.70	8.60	2.34	-5.48	-1.68	92	59	75.4	+0	168	1868	+325
Hardinsburg	0.46	11.31	4.56	-3.97	+0.61	90	59	75.8	-0	176	2054	+193
Henderson	0.31	11.57	3.28	-3.01	-0.34	90	58	75.4	-3	171	1995	+119
Huntington	0.52	7.20	2.15	-6.75	-1.84	93	58	75.6	+0	166	1862	+198
Jackson	0.41	7.05	2.38	-7.89	-1.82	90	60	74.8	-1	167	1900	+296
Lexington	0.26	9.80	2.54	-4.63	-1.47	90	57	74.8	-1	167	1872	+208
London	1.00	10.42	3.86	-3.68	-0.01	93	58	74.9	-0	169	1904	+255
Louisville	0.62	10.79	3.17	-3.70	-0.51	91	57	74.8	-1	166	1926	+80
Mayfield	0.00	6.72	1.88	-8.88	-1.75	91	58	75.6	-2	172	1948	+26
Nashville	0.11	8.53	2.00	-6.21	-1.47	93	64	79.1	+3	191	2153	+171
Nolin Lake	1.04	13.50	4.69	-2.87	+0.55	93	59	77.1	+1	180	2061	+351
Paducah	0.27	12.47	5.38	-3.56	+1.60	90	61	76.4	-2	178	2062	+125
Princeton	0.21	11.13	3.83	-4.56	+0.09	94	58	76.9	-1	177	2113	+207
Quicksand	0.36	6.95	2.33	-7.99	-1.87	91	58	75.6	+0	172	1940	+336
Somerset	3.16	11.81	5.21	-4.22	+1.01	91	56	74.6	-1	166	1800	+60
Spindletop	0.63	10.25	4.12	-4.18	+0.11	89	58	74.1	-1	164	1837	+173
Williamstown	0.81	11.57	3.31	-2.95	-0.52	90	55	74.5	-1	167	1849	+185

The above information is provided by Tom Priddy, Kentucky Extension Agricultural Meteorologist, University of Kentucky Agr'l Weather Center (859)257-3000 ext 245. E-mail: priddy@uky.edu Additional Ky weather data available on Internet at: <http://www.gwx.ca.uky.edu/>

## LIVESTOCK WEATHER SAFETY INDEX CHART

Dry Bulb Temp(F)	Relative Humidity Intervals (Percent)									
	10	20	30	40	50	60	70	80	90	100
78			70	71	72	74	75	75	77	78
80		70	72	73	74	75	77	78	79	80
82	70	71	73	74	75	76	78	79	81	82
84	71	72	74	75	77	78	80	81	83	84
86	72	74	75	77	78	80	81	83	84	86
88	73	75	76	78	80	81	83	85	87	88
90	74	76	78	79	81	83	85	87	88	90
92	75	77	79	81	83	84	86	88	90	
94	76	78	80	82	84	86	88	90		
96	77	79	81	84	86	88	90			
98	78	80	82	85	87	89				
100	79	82	84	86	88	91				

EMERGENCY STRESS - Index of 84 or Greater

DANGER STRESS - Index of 79 to 83

NO STRESS - Index of 78 or Less

DANGER - EXPECT 25% or more increase in transit loss!

EMERGENCY - EXPECT 45% or more increase in transit loss!

This release and others can be viewed on the Internet at <http://www.nass.usda.gov/ky/> For a free E-Mail subscription of the Kentucky Weekly Crop & Weather report, on the Internet go to <http://www.nass.usda.gov/sub-form.htm> and follow the instructions.

---