

**Delmarva Agriculture Data
Weekly Broiler Chicks Report**

PLACEMENTS DOWN 7%

For the week ending August 20, 2011, growers placed 11.0 million broiler chicks in Delmarva growing houses, according to the Maryland Field Office of USDA's National Agricultural Statistics Service. These placements were 7.0% below the comparable week a year earlier. Broiler-type chicks hatched (9.9 million) decreased 8.4% from the comparable week in 2010. Eggs set in incubators during the week totaled 11.7 million, a decrease of 8.7% from the same week a year earlier. Federally inspected slaughter on Delmarva was 10.4 million for the week ending August 13, 2011, compared to 11.3 million slaughtered during the same week in 2010.

BROILER-TYPE EGGS SET AND BROILER CHICKS PLACED ON DELMARVA

WEEK ENDING	EGGS SET 1/		CHICKS HATCHED 1/		CHICKS PLACED 2/	
	PREVIOUS YR	CURRENT YR	PREVIOUS YR	CURRENT YR	PREVIOUS YR	CURRENT YR
----- THOUSANDS -----						
06/25/2011	13,370	11,763	11,151	9,966	11,951	10,505
07/02/2011	13,115	11,550	11,049	10,193	11,997	10,622
07/09/2011	12,842	11,460	10,862	10,105	12,234	11,185
07/16/2011	13,317	11,720	11,197	9,992	11,843	10,728
07/23/2011	12,993	11,744	11,025	9,773	11,890	10,791
07/30/2011	12,937	11,681	10,765	9,693	11,890	10,329
08/06/2011	12,883	11,821	11,196	9,943	12,157	11,091
08/13/2011	12,911	11,588	10,871	9,925	11,835	11,173
08/20/2011	12,860	11,735	10,806	9,903	11,813	10,986

1/ For all broiler-type chicks, including those intended for hatchery flocks.

2/ The difference between chicks hatched and placed includes chicks withdrawn for hatchery flocks, inshipments and outshipments. None of those numbers are published to avoid disclosure of proprietary information.

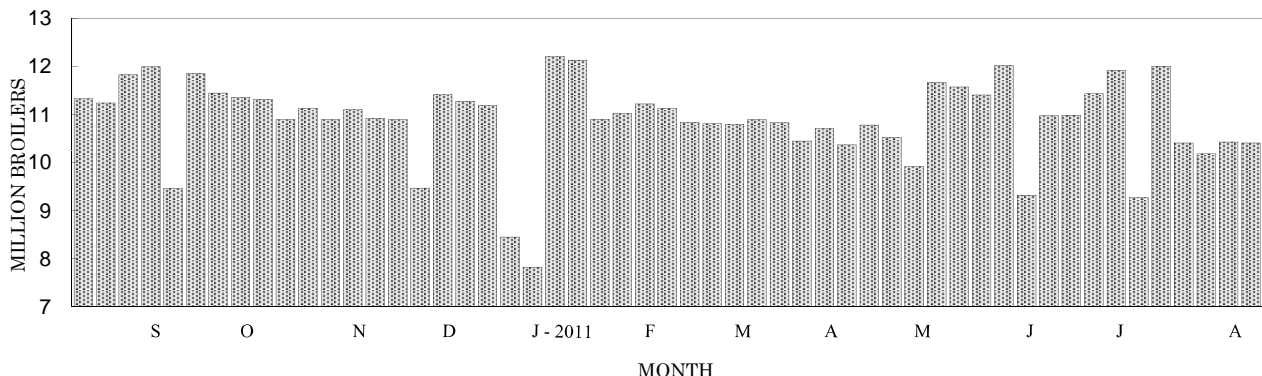
**NEGOTIATED PRICE FOR TRUCKLOT OF READY-TO-COOK, ICE-PACK,
GRADE A FRYERS (\$ per CWT) 1/**

	WEEK ENDING 08/27/2011	PREV. WEEK	PREV. MONTH	PREV. YEAR
New York Weighted Avg	77.10	76.14	74.09	82.80
12-City Composite 2/	81.22	83.07	80.08	83.64

1/ Source: U.S.D.A., Poultry Market News.

2/ 12-cities: Boston/New England, Chicago, Cincinnati, Cleveland, Denver, Detroit, Los Angeles, New York, Philadelphia, Pittsburgh, St. Louis and San Francisco.

***BROILERS SLAUGHTERED ON DELMARVA
August 2010 - August 2011***



Broiler-Type Eggs Set – 19 Selected States: 2011

State	Week ending					
	July 16, 2011	July 23, 2011	July 30, 2011	August 6, 2011	August 13, 2011	August 20, 2011
	(1,000 eggs)	(1,000 eggs)	(1,000 eggs)	(1,000 eggs)	(1,000 eggs)	(1,000 eggs)
Alabama	27,240	27,358	27,345	27,305	27,157	26,660
Arkansas	20,573	20,058	20,818	20,810	20,920	20,651
Delaware	2,920	2,920	3,022	3,167	3,161	3,015
Florida	1,353	1,352	1,382	1,370	1,358	1,352
Georgia	32,177	32,256	31,271	31,518	31,666	31,793
Kentucky	7,905	7,733	7,578	7,727	7,789	7,864
Louisiana	3,258	3,258	3,258	3,288	3,273	3,243
Maryland	7,620	7,644	7,510	7,511	7,460	7,451
Mississippi	18,293	18,417	18,418	18,563	18,440	18,312
North Carolina	20,095	19,737	19,845	19,570	19,303	19,518
Oklahoma	6,856	6,628	6,610	6,489	6,651	6,713
Pennsylvania	4,080	4,031	3,768	3,933	3,764	3,942
South Carolina	5,028	5,476	5,405	5,140	5,404	5,353
Texas	14,420	14,550	14,716	14,695	13,738	13,462
Virginia	5,861	5,808	5,787	5,764	5,543	5,826
California, Missouri, Tennessee, and West Virginia	19,290	18,345	18,104	19,044	18,994	18,573
19 State total	196,969	195,571	194,837	195,894	194,621	193,728
Previous year total	209,753	208,724	208,549	207,588	206,602	207,381
Percent of previous year	94	94	93	94	94	93

Commercial hatcheries in the 19 State weekly program set 194 million eggs in incubators during the week ending August 20, 2011. This was down 7 percent from the eggs set the corresponding week a year earlier. Average hatchability for chicks hatched during the week was 85 percent. Average hatchability is calculated by dividing chicks hatched during the week by eggs set three weeks earlier.

Broiler-Type Chicks Placed – 19 Selected States: 2011

State	Week ending					
	July 16, 2011	July 23, 2011	July 30, 2011	August 6, 2011	August 13, 2011	August 20, 2011
	(1,000 chicks)	(1,000 chicks)	(1,000 chicks)	(1,000 chicks)	(1,000 chicks)	(1,000 chicks)
Alabama	20,239	19,810	19,449	19,200	19,637	19,823
Arkansas	19,093	18,983	20,542	18,433	19,788	19,180
Delaware	4,737	4,770	4,403	4,023	4,853	4,741
Florida	1,223	1,209	1,184	1,225	1,152	1,150
Georgia	27,466	28,065	27,696	27,749	27,114	26,255
Kentucky	6,099	5,881	6,479	6,138	6,077	6,081
Louisiana	2,968	2,969	2,983	2,960	2,959	2,967
Maryland	5,603	5,721	4,661	6,940	5,253	4,876
Mississippi	15,904	15,901	15,845	15,919	16,013	16,058
North Carolina	15,911	15,747	16,115	16,069	16,206	15,596
Oklahoma	4,635	4,057	3,457	4,859	3,820	4,160
Pennsylvania	3,212	3,122	3,030	3,308	3,264	3,085
South Carolina	3,792	3,758	4,051	4,219	4,051	4,008
Texas	12,807	12,510	12,685	12,321	12,372	12,621
Virginia	4,584	4,375	5,518	4,221	5,130	5,564
California, Missouri, Tennessee, and West Virginia	16,969	16,476	15,379	16,798	15,278	15,662
19 State total	165,242	163,354	163,477	164,382	162,967	161,827
Previous year total	174,319	169,782	170,569	173,173	171,985	171,749
Percent of previous year	95	96	96	95	95	94

Broiler growers in the 19 State weekly program placed 162 million chicks for meat production during the week ending August 20, 2011. Placements were down 6 percent from the comparable week a year earlier. Cumulative placements from January 2, 2011 through August 20, 2011 were 5.59 billion, down 1 percent from the same period a year earlier.