

**Delmarva Agriculture Data
Weekly Broiler Chicks Report**

PLACEMENTS DOWN 8%

For the week ending August 27, 2011, growers placed 10.7 million broiler chicks in Delmarva growing houses, according to the Maryland Field Office of USDA's National Agricultural Statistics Service. These placements were 8.4% below the comparable week a year earlier. Broiler-type chicks hatched (9.7 million) decreased 9.7% from the comparable week in 2010. Eggs set in incubators during the week totaled 11.5 million, a decrease of 8.5% from the same week a year earlier. Federally inspected slaughter on Delmarva was 10.2 million for the week ending August 20, 2011, compared to 11.2 million slaughtered during the same week in 2010.

BROILER-TYPE EGGS SET AND BROILER CHICKS PLACED ON DELMARVA

WEEK ENDING	EGGS SET 1/		CHICKS HATCHED 1/		CHICKS PLACED 2/	
	PREVIOUS YR	CURRENT YR	PREVIOUS YR	CURRENT YR	PREVIOUS YR	CURRENT YR
----- THOUSANDS -----						
07/02/2011	13,115	11,550	11,049	10,193	11,997	10,622
07/09/2011	12,842	11,460	10,862	10,105	12,234	11,185
07/16/2011	13,317	11,720	11,197	9,992	11,843	10,728
07/23/2011	12,993	11,744	11,025	9,773	11,890	10,791
07/30/2011	12,937	11,681	10,765	9,693	11,890	10,329
08/06/2011	12,883	11,821	11,196	9,943	12,157	11,091
08/13/2011	12,911	11,588	10,871	9,925	11,835	11,173
08/20/2011	12,860	11,735	10,806	9,903	11,813	10,986
08/27/2011	12,564	11,499	10,768	9,726	11,681	10,703

1/ For all broiler-type chicks, including those intended for hatchery flocks.

2/ The difference between chicks hatched and placed includes chicks withdrawn for hatchery flocks, inshipments and outshipments. None of those numbers are published to avoid disclosure of proprietary information.

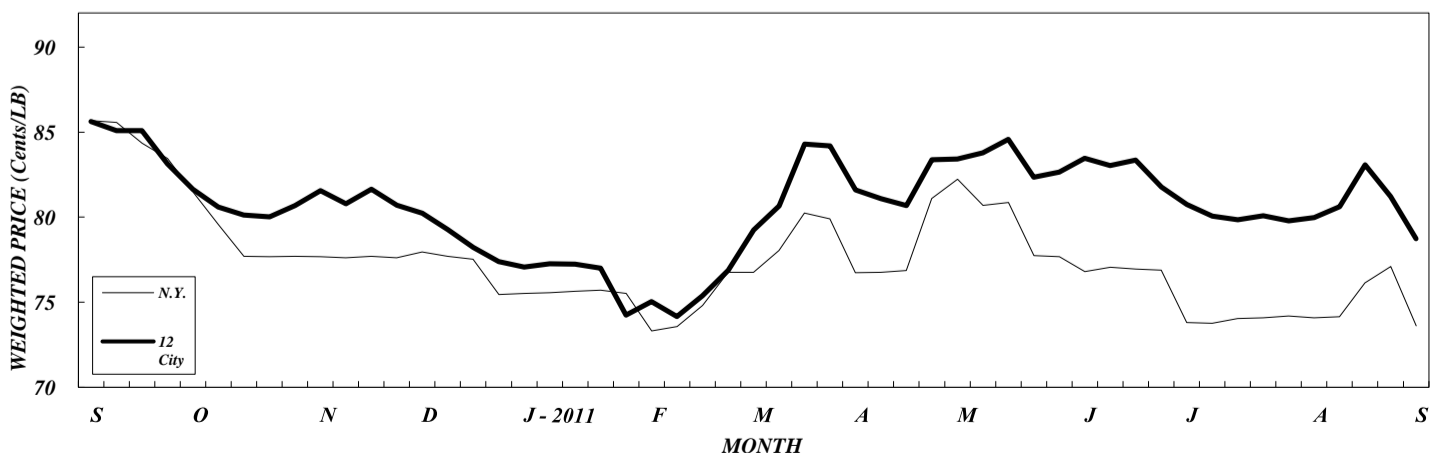
**NEGOTIATED PRICE FOR TRUCKLOT OF READY-TO-COOK, ICE-PACK,
GRADE A FRYERS (\$ per CWT) 1/**

	WEEK ENDING 09/03/2011	PREV. WEEK	PREV. MONTH	PREV. YEAR
New York Weighted Avg	73.62	77.10	74.20	84.90
12-City Composite 2/	78.74	81.22	79.78	84.73

1/ Source: U.S.D.A., Poultry Market News.

2/ 12-cities: Boston/New England, Chicago, Cincinnati, Cleveland, Denver, Detroit, Los Angeles, New York, Philadelphia, Pittsburgh, St. Louis and San Francisco.

**WHOLE BIRD PRICES
September 2010 - September 2011**



Broiler-Type Eggs Set – 19 Selected States: 2011

State	Week ending					
	July 23, 2011	July 30, 2011	August 6, 2011	August 13, 2011	August 20, 2011	August 27, 2011
	(1,000 eggs)	(1,000 eggs)	(1,000 eggs)	(1,000 eggs)	(1,000 eggs)	(1,000 eggs)
Alabama	27,358	27,347	27,308	27,157	26,581	26,936
Arkansas	20,058	20,818	20,795	20,920	20,651	20,994
Delaware	2,920	3,022	3,167	3,161	3,015	2,886
Florida	1,352	1,382	1,370	1,347	1,352	1,364
Georgia	32,256	31,388	31,538	31,666	31,793	31,649
Kentucky	7,733	7,627	7,773	7,789	7,864	7,878
Louisiana	3,258	3,258	3,288	3,273	3,243	3,167
Maryland	7,644	7,510	7,511	7,460	7,451	7,645
Mississippi	18,417	18,418	18,563	18,440	18,312	17,602
North Carolina	19,737	19,845	19,570	19,303	19,518	19,364
Oklahoma	6,628	6,610	6,489	6,651	6,713	6,702
Pennsylvania	4,031	3,768	3,933	3,764	3,510	3,809
South Carolina	5,476	5,405	5,140	5,404	5,353	5,413
Texas	14,550	14,716	14,571	13,738	13,462	13,466
Virginia	5,808	5,787	5,764	5,543	5,826	5,291
California, Missouri, Tennessee, and West Virginia	18,345	18,104	19,044	19,090	18,598	18,273
.....	195,571	195,005	195,824	194,706	193,242	192,439
19 State total	208,724	208,549	207,588	206,602	207,381	206,575
Previous year total	94	94	94	94	93	93
Percent of previous year						

Commercial hatcheries in the 19 State weekly program set 192 million eggs in incubators during the week ending August 27, 2011. This was down 7 percent from the eggs set the corresponding week a year earlier. Average hatchability for chicks hatched during the week was 85 percent. Average hatchability is calculated by dividing chicks hatched during the week by eggs set three weeks earlier.

Broiler-Type Chicks Placed – 19 Selected States: 2011

State	Week ending					
	July 23, 2011	July 30, 2011	August 6, 2011	August 13, 2011	August 20, 2011	August 27, 2011
	(1,000 chicks)	(1,000 chicks)	(1,000 chicks)	(1,000 chicks)	(1,000 chicks)	(1,000 chicks)
Alabama	19,810	19,449	19,200	19,637	19,619	18,571
Arkansas	18,983	20,542	18,433	19,788	19,180	18,514
Delaware	4,770	4,403	4,023	4,853	4,741	4,890
Florida	1,209	1,184	1,225	1,145	1,150	1,147
Georgia	28,065	27,696	27,749	27,114	26,255	27,358
Kentucky	5,881	6,479	6,138	6,077	6,081	6,816
Louisiana	2,969	2,983	2,960	2,959	2,967	2,993
Maryland	5,721	4,661	6,940	5,253	4,876	5,294
Mississippi	15,901	15,845	15,919	16,013	16,160	16,186
North Carolina	15,747	16,115	16,069	16,206	15,596	15,708
Oklahoma	4,057	3,457	4,859	3,820	4,160	4,711
Pennsylvania	3,122	3,030	3,308	3,264	3,078	3,228
South Carolina	3,758	4,051	4,219	4,051	4,008	4,595
Texas	12,510	12,685	12,421	12,372	12,571	12,522
Virginia	4,375	5,518	4,221	5,130	5,564	4,911
California, Missouri, Tennessee, and West Virginia	16,476	15,379	16,798	15,278	15,661	16,174
.....	163,354	163,477	164,482	162,960	161,667	163,618
19 State total	169,782	170,569	173,173	171,985	171,749	170,866
Previous year total	96	96	95	95	94	96
Percent of previous year						

Broiler growers in the 19 State weekly program placed 164 million chicks for meat production during the week ending August 27, 2011. Placements were down 4 percent from the comparable week a year earlier. Cumulative placements from January 2, 2011 through August 27, 2011 were 5.75 billion, down 1 percent from the same period a year earlier.