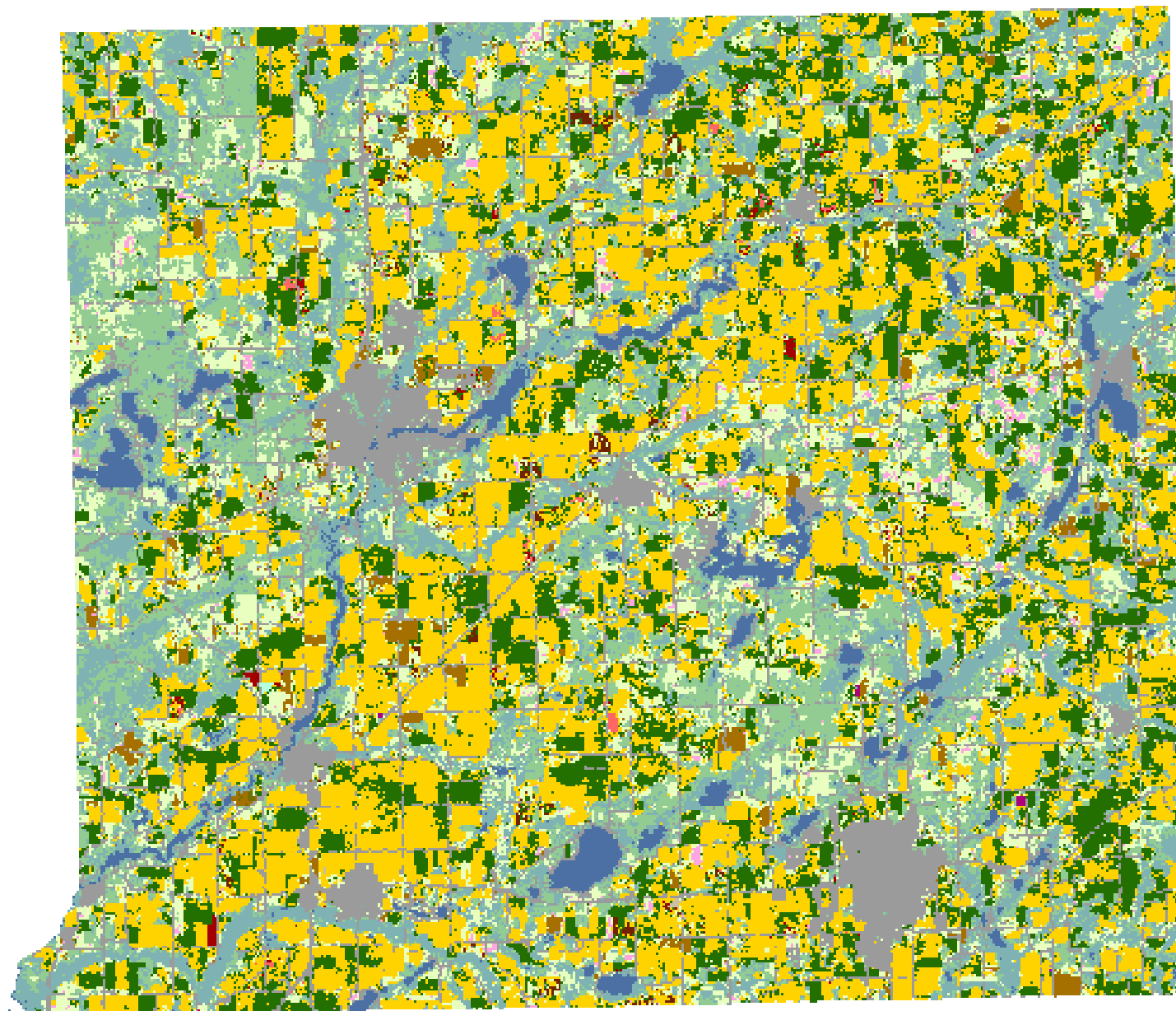
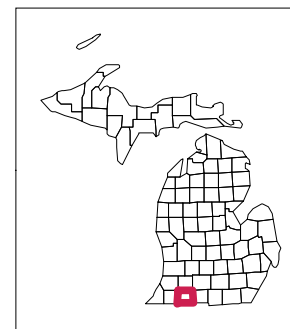


# 2008 St. Joseph County, Michigan



## Land Cover Categories

### Agriculture

- Pasture/Grass
- Corn
- Soybeans
- Winter Wheat
- Alfalfa
- Dry Beans
- Sugarbeets
- Fallow/Idle Cropland
- Oats
- Misc. Veggies. & Fruits
- Potatoes
- Apples/Cherries
- Seed/Sod Grass
- Other Crops
- Barley
- Christmas Trees
- Rye
- Sunflowers
- Grapes
- Spring Wheat
- Peas
- Sorghum
- Clover/Wildflowers
- Speltz
- W. Wht./Soy. Dbl. Crop.
- Other Small Grains

### Non-Agriculture

- Woodland
- Wetlands
- Urban/Developed
- Water
- Shrubland
- Barren

