



Minnesota Ag News – Crop Weather

USDA, NASS, Minnesota Field Office
P.O. Box 7068 – St. Paul, MN 55107
(651) 296-2230 · (651) 296-3192 FAX

Email: nass-mn@nass.usda.gov - Homepage: <http://www.nass.usda.gov>

Released: May 26, 2009

Issue No: CW-21-09

COOPERATING WITH THE MN DEPARTMENT OF AGRICULTURE, NATIONAL WEATHER SERVICE - CHANHASSEN MN,
UNIV. OF MINN. EXTENSION SERVICE, DNR STATE CLIMATOLOGY OFFICE, USDA-FSA, USDA-NRCS, and Local FACs

HOT, DRY WEATHER PROMOTES PLANTING, DEPLETES MOISTURE

Minnesota producers nearly completed corn planting and made significant progress on soybeans last week, according to the NASS Minnesota Field Office. The hot, dry weather kept farmers in the fields, but continued to deplete topsoil moisture. Strong winds eroded soils and damaged newly emerged crops in some areas. Rain is needed for emergence and continued crop progress, especially as some recently planted soybeans lay in dry ground.

There were 6.3 days suitable for fieldwork during the week. Topsoil moisture supplies rated 11 percent very short, 27 percent short, 53 percent adequate and 9 percent surplus across the state.

Corn planting progressed to 96 percent complete. Seventy-one percent of the corn acres have emerged compared with 30 percent last year and an average of 63 percent.

Seventy-one percent of the spring wheat acreage was planted and 24 percent has emerged. Spring wheat planting made noticeable progress up 37 points from last week's report due, in part, to one of the more suitable weeks for fieldwork across northern Minnesota. Similar increases occurred in barley, sunflowers and canola planting. Oats was in primarily fair to good condition with 31 percent rated fair, 53 percent good and 11 percent excellent.

Soybean planting advanced to 75 percent complete, ahead of last year and the five-year average. Twenty-one percent has emerged, ahead of last year and on pace with average.

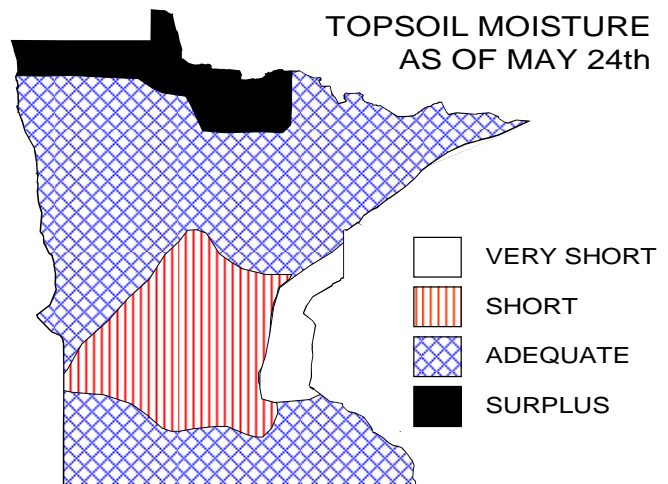
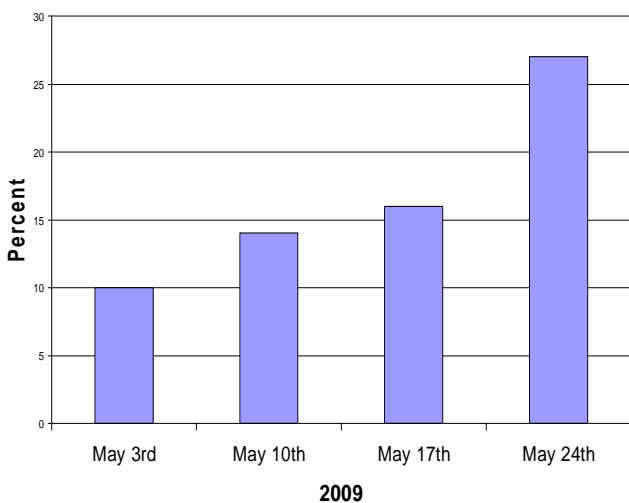
Pasture and range condition rated 4 percent very poor, 7 percent poor, 34 percent fair, 47 percent good, and 8 percent excellent. Producers began work on first cutting alfalfa.

Days Suitable for Fieldwork: 6.3				
	Very Short	Short	Adequate	Surplus
	----- Percent -----			
Topsoil Moisture	11	27	53	9

Crop Progress as of May 24, 2009					
Crop	Stage of Development	This Week	Last Week	Last Year	5 Yr Avg
		----- Percent -----			
Corn	Planted	96	90	91	95
	Emerged	71	40	30	63
Soybeans	Land Prepared	82	69	78	89
	Planted	75	52	65	70
Spring Wheat	Emerged	21	3	3	22
	Planted	71	34	98	96
Oats	Emerged	24	18	66	76
	Planted	91	83	91	97
Barley	Emerged	73	66	65	81
	Planted	75	31	93	94
Sunflowers	Emerged	28	19	66	72
	Planted	21	3	70	57
Canola	Emerged	70	4	48	68
	Planted	40	12	67	49
Sweet Corn	Emerged	55	38	33	47
	Planted	92	83	73	80
Green Peas	Emerged	92	83	73	80
	Planted	92	55	99	99
Sugarbeets	Emerged	3	NA	0	4
	Planted	87	71	91	89

Condition as of May 24, 2009					
	Very Poor	Poor	Fair	Good	Exc
	----- Percent -----				
Pasture	4	7	34	47	8
Oats	1	4	31	53	11

Topsoil Moisture Supply Rated Short



PRECIPITATION AND TEMPERATURES FOR THE WEEK ENDING May 24, 2009:
 Temperatures averaged from 3.8 degrees below normal in the Northwest District to 4.5 degrees above normal in the Southeast District.
 Extremes: 27 degrees in Hibbing, 99 degrees in Montevideo, Lamberton, Redwood Falls. Precipitation averaged from 0.74 inch below normal in the East Central District to 0.43 inch below normal in the Southwest District. Greatest weekly total of 0.62 inch was recorded in Pipestone.

For a map of Minnesota's precipitation, please see the Minnesota Climatology Group's website;
<http://climate.umn.edu/doc/weekmap.asp>.

Precipitation and Temperature Summary for 5/18/2009 through 5/24/2009

	Temperature				Precipitation				G D D	
	High	Low	Week Ave	Depart from Norm	Week Total	Depart Past Week	From Four Weeks	Norm Since 4/1	Since May 4	Depart from Norm
<u>NW DIST 1</u>										
Crookston	75	32	53.8	-4.7	.08	-.52	-1.03	-1.64	128	-67
Moorhead	84	35	58.2	-1.2	.06	-.58	-.62	-1.45	179	-27
Warroad	67	33	49.8	-5.5	.19	-.40	.28	-.23	102	-50
<u>NC DIST 2</u>										
Grand Rapids	88	33	55.0	-1.3	.09	-.62	-.34	-.98	174	9
Intl. Falls	84	28	51.2	-4.1	.14	-.49	.15	-.40	128	-27
Itasca	82	32	54.8	.1	.11	-.58	-.53	-1.21	153	7
<u>NE DIST 3</u>										
Duluth	88	34	53.2	-.5	.09	-.62	-.74	-2.07	142	11
Grand Marais	71	36	49.1	.8	.42	-.20	-.02	.84	79	3
Hibbing	87	27	53.4	-1.3	.14	-.50	.14	-.39	171	25
<u>WC DIST 4</u>										
Alexandria	88	43	62.5	4.2	0	-.74	-1.65	-3.11	197	5
Browns Valley	95	36	60.6	.4	0	-.55	-.66	-1.95	200	-18
Canby	97	42	63.0	1.9	.47	-.22	-1.21	-2.61	222	-4
Dalton	86	42	61.2	2.1	0	-.65	-.90	-1.72	180	-21
Fergus Falls	86	37	59.2	.4	0	-.65	-.32	-.41	178	-18
Montevideo	99	34	64.6	4.3	.34	-.42	-1.44	-3.14	241	27
Morris	92	42	63.4	3.5	0	-.68	-1.45	-2.97	209	-5
<u>CENT DIST 5</u>										
Becker	94	39	62.6	3.6	.15	-.67	-1.94	-3.07	222	20
Collegeville	92	41	63.6	2.5	0	-.85	-1.77	-2.70	229	-1
Hutchinson	96	44	67.0	6.2	.05	-.69	-.99	-2.29	253	29
Melrose	85	32	58.5	-.9	0	-.78	-1.39	-2.51	192	-12
Olivia	97	41	63.8	3.4	.34	-.40	-.39	-1.97	227	8
St. Cloud	92	35	60.8	2.3	.03	-.69	-.55	-1.29	211	17
Staples	88	36	57.9	1.0	.03	-.70	-1.56	-2.76	174	-3
Willmar	96	43	65.1	4.9	.24	-.55	-.44	-1.84	218	3
<u>EC DIST 6</u>										
Aitkin	87	31	57.0	1.4	.12	-.63	.24	-.34	162	3
Forest Lake	92	36	62.2	2.5	0	-.82	-1.37	-2.83	242	31
Hinckley	89	33	56.6	.5	.06	-.74	-.77	-2.11	183	20
MSP Airport	97	49	69.4	8.2	.12	-.65	-2.04	-2.62	265	35
St. Paul - UofM	94	46	68.8	6.8	.03	-.87	-2.38	-3.33	269	26
<u>SW DIST 7</u>										
Lamberton	99	42	65.0	3.9	.34	-.41	-.41	-2.15	228	0
Marshall	97	42	63.0	1.9	.56	-.18	-.42	-2.06	225	-1
Pipestone	96	31	62.0	2.3	.62	-.17	-1.02	-1.43	237	27
Redwood Falls	99	47	68.0	5.7	.23	-.50	-.89	-2.22	252	6
Worthington	94	40	62.8	3.5	.09	-.70	.42	-.98	205	2
<u>SC DIST 8</u>										
Faribault	94	33	62.8	3.4	.25	-.63	-.92	-2.18	225	20
Mankato	95	35	64.2	3.6	.08	-.76	-.71	-2.44	231	9
Waseca	96	44	66.2	5.7	.05	-.87	-.43	-2.21	230	9
Winnebago	95	36	63.2	2.4	.43	-.49	-.24	-1.61	234	7
<u>SE DIST 9</u>										
Preston	89	36	63.5	5.0	.11	-.79	.59	-.90	227	36
Red Wing	95	35	65.1	4.7	.20	-.61	-.71	-2.20	239	21
Rochester	94	44	65.6	6.8	.05	-.76	-.83	-1.65	220	24
Rosemount	95	36	63.8	4.5	.38	-.57	-.84	-2.43	225	20
Winona	89	36	64.5	4.0	.01	-.84	-.27	-1.25	228	8

m=some data missing

Corn growing degree days (GDD) are calculated by subtracting a 50 degree base temperature from the average of the maximum and minimum temperature for the day. The daily maximum is limited to 86 degrees and minimum of 50 degrees.

The MINNESOTA WEEKLY CROP-WEATHER REPORT (USPS-387190) is published weekly in April through November (crop season). Subscription rates are \$15.00 per year for non-reporters and free to survey respondents by the USDA-NASS Minnesota Field Office, P O Box 7068, St. Paul, MN 55107. Periodicals postage paid at St. Paul, Minnesota and other mailing offices. POSTMASTER: Send address changes to the MINNESOTA WEEKLY CROP-WEATHER REPORT, P O Box 7068, St. Paul, MN 55107.

Address Service Requested
 Publication No. 387190
 Minnesota Crop-Weather Report
 WEEKLY NEWS REPORT

USDA, NASS, Minnesota Field Office
 PO Box 7068, ST. PAUL MN 55107

PRESORTED
 FIRST CLASS MAIL
 POSTAGE & FEES PAID
 USDA PERMIT NO G-38