



Minnesota Ag News – Crop Weather

USDA, NASS, Minnesota Field Office
P.O. Box 7068 – St. Paul, MN 55107
(651) 296-2230 · (651) 296-3192 FAX

Email: nass-mn@nass.usda.gov - Homepage: <http://www.nass.usda.gov>

Released: August 17, 2009

Issue No: CW-33-09

COOPERATING WITH THE MN DEPARTMENT OF AGRICULTURE, NATIONAL WEATHER SERVICE - CHANHASSEN, MN

UNIV. OF MINN. EXTENSION SERVICE, DNR STATE CLIMATOLOGY OFFICE, USDA-FSA, USDA-NRCS, and Local FACs

SPRING WHEAT HARVEST STILL BEHIND

Spring wheat harvest remained behind last year and average due, in part, to springtime planting delays and the below normal average temperatures that followed, according to the USDA, NASS, Minnesota Field Office. By Sunday, 9 percent of spring wheat was harvested, 5 points behind last year and 36 points behind average. Overall, 70 percent of the spring wheat crop was rated in good to excellent condition. Barley was 16 percent harvested and 50 percent of this year's oat crop was harvested.

Temperatures were seasonably warm with daytime highs generally ranging from the low 80s north to low 90s south. Showers and thunderstorms affected the state Thursday through Sunday. Areas of the northwest and central received between 1 and 2 inches of rain with some locally heavier amounts. Topsoil moisture supplies were rated 63 percent adequate to surplus, up from 62 percent last week.

Fifty-five percent of the corn crop was at or beyond the milk stage, 13 points behind last year and 28 points behind the 5-year average. Nine percent was at or beyond the dough stage, 9 points behind last year and 33 points behind average. Statewide, 74 percent of the corn crop was rated in good to excellent condition, unchanged from a week ago. By Sunday, pod set was evident in 72 percent of the soybean crop, 13 points behind last year and 18 points behind average. Sixty-seven percent of soybeans were in good to excellent condition.

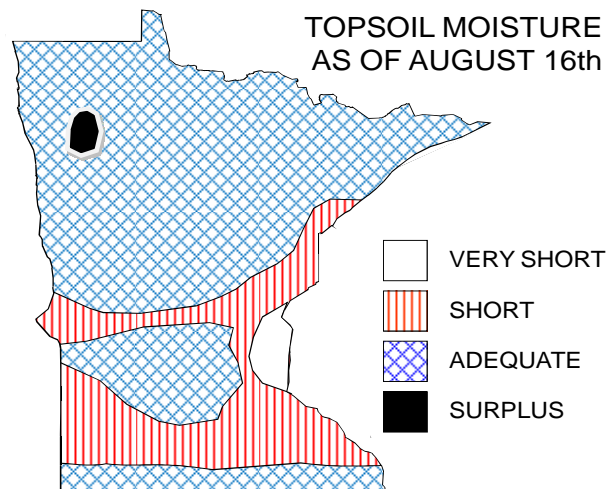
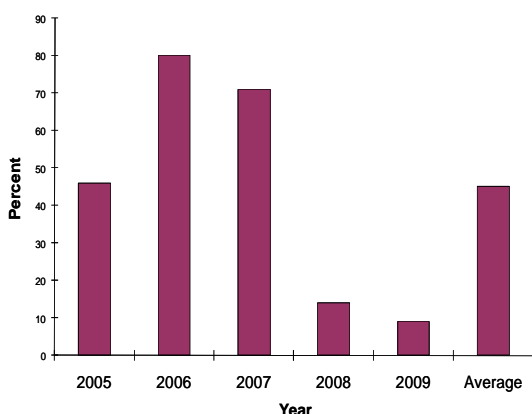
Potatoes were 11 percent harvested by week's end, 5 points ahead of last year, but 3 points behind average. Ninety percent of the potato crop was rated in good to excellent condition. Sweet corn harvest advanced to 16 percent complete, 4 points behind last year and 16 points behind average.

Days Suitable for Fieldwork: 5.8				
	Very Short	Short	Adequate	Surplus
	----- Percent -----			
Topsoil Moisture	10	27	58	5

Crop Progress as of August 16, 2009					
Crop	Stage of Development	This Week	Last Week	Last Year	5 Yr Avg
		----- Percent -----			
Corn	Silking	97	94	98	99
	Milk	55	23	68	83
	Dough	9	1	18	42
Soybeans	Blooming	96	89	99	99
	Setting Pods	72	50	85	90
Spring Wheat	Turning Ripe	69	61	82	94
	Harvested	9	3	14	45
Oats	Turning Ripe	92	85	97	98
	Harvested	50	30	54	74
Barley	Turning Ripe	74	54	89	97
	Harvested	16	7	36	63
Potatoes	Harvested	11	5	6	14
Canola	Harvested	1	0	1	21
Sweet Corn	Harvested	16	10	20	32

Condition as of August 16, 2009					
	Very Poor	Poor	Fair	Good	Exc
	----- Percent -----				
Pasture	9	14	33	41	3
Spring Wheat	2	5	23	50	20
Barley	2	6	29	46	17
Oats	2	5	27	49	17
Soybeans	1	7	25	51	16
Corn	1	4	21	55	19
Potatoes	0	1	9	62	28
Canola	0	16	52	31	1
Sunflowers	0	9	35	47	9
Dry Beans	2	5	25	57	11
Sugarbeets	2	3	22	59	14

Spring Wheat Harvested as of August 16th



PRECIPITATION AND TEMPERATURES FOR THE WEEK ENDING August 16, 2009:
 Temperatures averaged from 2.3 degrees above normal in the West Central District to 4.4 degrees above normal in the East Central District.
 Extremes: 44 degrees in Hibbing, 96 degrees in Marshall. Precipitation averaged from 0.51 inch below normal in the South Central District to 1.32 inches above normal in the Northwest District. Greatest weekly total of 3.00 inches was recorded in Willmar.

For a map of Minnesota's precipitation, please see the Minnesota Climatology Group's website;
<http://climate.umn.edu/doc/weekmap.asp>.

Precipitation and Temperature Summary for 8/10/2009 through 8/16/2009

	Temperature				Precipitation				G D D	
	High	Low	Week Ave	Depart from Norm	Week Total	Depart Past Week	From Four Weeks	Since 4/1	Since May 4	Depart from Norm
<u>NW DIST 1</u>										
Crookston	90	53	72.2	3.0	1.50	.82	1.61	2.26	1347	-331
Moorhead	95	55	74.8	4.6	1.47	.89	-.15	-3.92	1543	-212
Warroad	90	54	70.7	4.0	2.91	2.24	2.17	2.15	1093	-377
<u>NC DIST 2</u>										
Grand Rapids	89	51	71.2	5.1	1.12	.27	1.21	-1.82	1318	-159
Intl. Falls	89	45	68.6	3.7	1.48	.78	.68	-1.94	1090	-298
Itasca	90	51	70.5	5.0	1.15	.29	1.10	-2.83	1234	-147
<u>NE DIST 3</u>										
Duluth	85	53	70.5	5.9	.48	-.46	-.02	-6.15	1160	-120
Grand Marais	75	49	62.1	-1.3	.15	-.54	-.27	-1.98	762	-155
Hibbing	88	44	67.2	2.5	.88	.09	-.48	-4.58	1180	-163
<u>WC DIST 4</u>										
Alexandria	90	56	72.4	3.6	2.19	1.37	.11	-7.06	1536	-145
Browns Valley	91	55	70.6	-.4	.75	.10	1.47	-1.06	1499	-354
Canby	95	60	76.0	4.0	.08	-.55	-1.27	-5.82	1699	-239
Dalton	89	59	73.0	3.5	1.12	.38	-.02	-1.54	1529	-196
Montevideo	90	57	72.6	1.9	.14	-.59	1.95	-4.31	1594	-253
Morris	88	54	71.5	1.5	1.73	.95	-.25	-7.27	1548	-254
<u>CENT DIST 5</u>										
Becker	90	57	74.8	6.2	.75	-.24	.30	-4.69	1686	-26
Hutchinson	90	58	74.3	4.1	.42	-.53	1.94	-4.55	1730	-144
Melrose	88	55	70.2	.3	2.75	1.94	1.72	-2.11	1472	-316
Olivia	87	56	71.4	2.0	.99	.21	2.98	-3.15	1592	-236
St. Cloud	89	53	71.8	3.6	.95	.04	1.53	-2.33	1553	-114
Staples	90	52	71.4	4.9	1.09	.36	.09	-1.74	1418	-87
Willmar	88	58	73.7	4.0	3.00	2.12	5.18	-2.16	1685	-134
<u>EC DIST 6</u>										
Aitkin	88	58	73.8	8.2	.42	-.49	-.07	-1.31	1357	-69
Forest Lake	93	57	74.6	5.2	1.20	.14	.15	-7.23	1666	-110
Hinckley	89	48	68.6	2.3	.81	-.15	.34	-4.73	1276	-221
MSP Airport	90	64	75.4	3.8	.25	-.70	1.93	-5.23	1888	-48
St. Paul - UofM	88	59	74.3	2.3	.91	-.10	.41	-8.50	1783	-203
<u>SW DIST 6</u>										
Lamberton	93	56	74.2	4.0	.79	.01	-1.24	-4.66	1686	-212
Marshall	96	57	76.1	4.8	.43	-.29	-1.23	-4.64	1712	-212
Redwood Falls	92	60	74.0	2.1	.25	-.59	-2.23	-8.55	1814	-185
Worthington	89	58	73.2	4.1	1.51	.70	-.97	-1.14	1626	-152
<u>SC DIST 8</u>										
Faribault	87	60	74.6	4.9	1.01	-.02	1.90	-3.63	1657	-149
Mankato	88	58	73.6	2.8	.32	-.72	-1.69	-9.24	1644	-238
Waseca	86	55	72.9	3.2	.60	-.48	-1.24	-8.04	1640	-200
Winnebago	88	59	74.4	4.0	.17	-.83	-2.43	-7.80	1780	-119
<u>SE DIST 9</u>										
Preston	87	53	72.6	3.5	1.17	.09	.17	-2.65	1585	-144
Red Wing	90	59	74.5	3.7	2.02	1.12	3.12	-2.86	1647	-219
Rochester	84	57	71.6	2.9	.63	-.37	1.43	-1.77	1575	-137
Rosemount	87	61	73.9	4.4	2.42	1.35	2.86	-3.61	1608	-175

Corn growing degree days (GDD) are calculated by subtracting a 50 degree base temperature from the average of the maximum and minimum temperature for the day. The daily maximum is limited to 86 degrees and minimum of 50 degrees.

The MINNESOTA WEEKLY CROP-WEATHER REPORT (USPS-387190) is published weekly in April through November (crop season). Subscription rates are \$15.00 per year for non-reporters and free to survey respondents by the USDA-NASS Minnesota Field Office, P O Box 7068, St. Paul, MN 55107. Periodicals postage paid at St. Paul, Minnesota and other mailing offices. POSTMASTER: Send address changes to the MINNESOTA WEEKLY CROP-WEATHER REPORT, P O Box 7068, St. Paul, MN 55107.

WEEKLY NEWS REPORT
 Minnesota Crop-Weather Report
 Publication No. 387190
 Address Service Requested

USDA, NASS, Minnesota Field Office
 PO Box 7068, ST. PAUL, MN 55107

PRESORTED
FIRST CLASS MAIL
POSTAGE & FEES PAID
USDA PERMIT NO G-38