



# Minnesota Ag News – Crop Weather

USDA, NASS, Minnesota Field Office  
P.O. Box 7068 – St. Paul, MN 55107  
(651) 296-2230 · (651) 296-3192 FAX

Email: [nass-mn@nass.usda.gov](mailto:nass-mn@nass.usda.gov) - Homepage: <http://www.nass.usda.gov>

Released: August 24, 2009

Issue No: CW-34-09

COOPERATING WITH THE MN DEPARTMENT OF AGRICULTURE, NATIONAL WEATHER SERVICE - CHANHASSEN, MN

UNIV. OF MINN. EXTENSION SERVICE, DNR STATE CLIMATOLOGY OFFICE, USDA-FSA, USDA-NRCS, and Local FACs

## AUGUST RAINS NARROW PRECIPITATION SHORTFALLS

Above normal August rainfall was beneficial for drier portions of the state, according to the USDA, NASS, Minnesota Field Office. Most notably Willmar's seasonal precipitation total was over 6 inches below normal on August 2<sup>nd</sup>. As of Sunday, Willmar was less than 2 inches below normal for precipitation. Statewide, topsoil moisture supplies were rated 81 percent adequate to surplus, up from 63 percent last week.

Eighty-one percent of the corn crop was at or beyond the milk stage, 8 points behind last year and 12 points behind the 5-year average. Twenty-three percent was at or beyond the dough stage, 18 points behind last year and 39 points behind average. Statewide, 73 percent of the corn crop was rated in good to excellent condition. By Sunday, pod set was evident in 91 percent of the soybean crop, 5 points behind last year and 6 points behind average. Sixty-nine percent of soybeans were in good to excellent condition.

By Sunday, 15 percent of spring wheat was harvested, 26 points behind last year and 48 points behind average. Overall, 68 percent of the spring wheat crop was rated in good to excellent condition. Barley was 23 percent harvested and 56 percent of this year's oat crop was harvested.

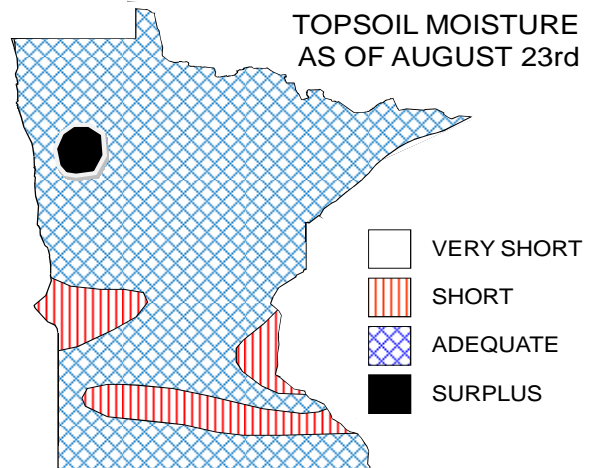
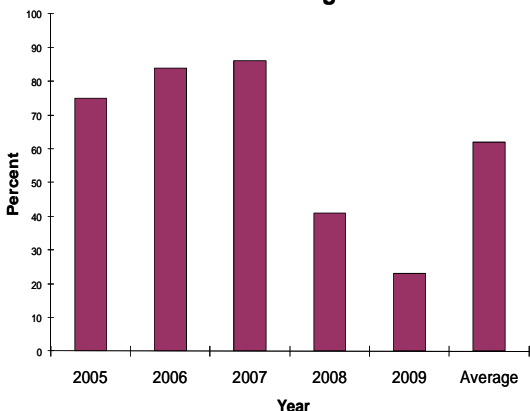
Potatoes were 12 percent harvested by week's end, 5 points behind last year, and 10 points behind average. Ninety percent of the potato crop was rated in good to excellent condition, unchanged from last week. Sweet corn harvest advanced to 28 percent complete, 4 points behind last year and 17 points behind average.

Days Suitable for Fieldwork: 3.7				
	Very Short	Short	Adequate	Surplus
	----- Percent -----			
Topsoil Moisture	1	18	75	6

Crop Progress as of August 23, 2009					
Crop	Stage of Development	This Week	Last Week	Last Year	5 Yr Avg
		----- Percent -----			
Corn	Milk	81	55	89	93
	Dough	23	9	41	62
	Dent	1	0	7	29
Corn Silage	Harvested	1	0	6	7
Soybeans	Blooming	99	96	99	100
	Setting Pods	91	72	96	97
Spring Wheat	Turning Ripe	80	69	95	98
	Harvested	15	9	41	63
Oats	Turning Ripe	93	92	100	100
	Harvested	56	50	78	87
Barley	Turning Ripe	83	74	95	99
	Harvested	23	16	70	79
Potatoes	Harvested	12	11	17	22
Canola	Harvested	3	1	14	39
Dry Beans	Harvested	2	NA	0	1
Sweet Corn	Harvested	28	16	32	45

Condition as of August 23, 2009					
	Very Poor	Poor	Fair	Good	Exc
	----- Percent -----				
Pasture	5	13	35	44	3
Spring Wheat	2	7	23	48	20
Barley	2	6	30	47	15
Oats	3	8	26	49	14
Soybeans	1	6	24	52	17
Corn	1	4	22	53	20
Potatoes	0	1	9	64	26
Canola	0	13	43	35	9
Sunflowers	0	12	37	43	8
Dry Beans	2	5	24	57	12
Sugarbeets	1	4	23	59	13

Field Corn at or beyond Dough Stage as of August 23rd



PRECIPITATION AND TEMPERATURES FOR THE WEEK ENDING August 23, 2009:  
 Temperatures averaged from 5.5 degrees below normal in the Northwest District to 3.7 degrees below normal in the East Central, Central Districts. Extremes: 37 degrees in Hibbing, International Falls; 87 degrees in Faribault. Precipitation averaged from 0.21 inch below normal in the North Central District to 1.79 inches above normal in the East Central District. Greatest weekly total of 6.05 inches was recorded in Hinckley.

For a map of Minnesota's precipitation, please see the Minnesota Climatology Group's website; <http://climate.umn.edu/doc/weekmap.asp>.

Precipitation and Temperature Summary for 8/17/2009 through 8/23/2009

	Temperature				Precipitation				G D D	
	High	Low	Week Ave	Depart from Norm	Week Total	Depart Past Week	From Four Weeks	From Norm Since 4/1	Since May 4	Depart from Norm
<u>NW DIST 1</u>										
Crookston	77	46	61.4	-6.2	.82	.16	.80	2.42	1432	-371
Moorhead	82	47	63.6	-4.9	.21	-.35	-.01	-4.27	1642	-243
Warroad	72	45	59.5	-5.5	.88	.23	3.09	2.39	1165	-415
<u>NC DIST 2</u>										
Grand Rapids	79	42	60.9	-3.5	.38	-.43	-.32	-2.24	1402	-182
Intl. Falls	79	37	58.0	-5.2	.74	.03	.92	-1.92	1163	-325
Itasca	74	48	61.7	-2.1	.66	-.18	-.28	-3.00	1320	-164
<u>NE DIST 3</u>										
Duluth	76	45	59.6	-3.6	3.24	2.28	1.63	-3.87	1233	-146
Grand Marais	70	43	57.1	-5.5	1.21	.51	-.26	-1.48	823	-190
Hibbing	77	37	57.4	-5.6	1.45	.70	-.26	-3.89	1256	-185
<u>WC DIST 4</u>										
Alexandria	79	51	64.6	-2.6	.96	.14	.87	-6.92	1640	-164
Browns Valley	79	47	62.8	-6.6	.41	-.20	1.89	-1.26	1593	-396
Canby	81	52	66.2	-4.3	1.11	.49	-.48	-5.33	1814	-266
Dalton	76	51	63.2	-4.9	.43	-.28	.17	-1.82	1623	-229
Montevideo	79	49	63.6	-5.6	1.54	.83	2.18	-3.48	1691	-290
Morris	76	49	62.6	-5.9	.89	.17	.74	-7.10	1639	-293
<u>CENT DIST 5</u>										
Becker	78	51	65.0	-2.0	2.54	1.57	1.67	-3.12	1776	-58
Hutchinson	81	52	65.3	-3.4	1.13	.22	2.16	-4.33	1838	-168
Melrose	77	50	62.2	-6.1	1.19	.40	2.33	-1.71	1558	-360
Olivia	78	49	62.7	-5.2	1.51	.74	3.12	-2.41	1683	-272
St. Cloud	78	49	64.3	-2.3	1.41	.49	1.95	-1.84	1654	-132
Staples	76	52	64.0	-1.0	.96	.26	.38	-1.38	1518	-96
Willmar	77	52	63.8	-4.4	1.20	.33	4.42	-1.84	1783	-165
<u>EC DIST 6</u>										
Aitkin	76	48	62.8	-1.3	1.07	.21	-.89	-1.11	1449	-80
Forest Lake	83	46	64.8	-3.1	2.60	1.56	1.37	-5.66	1775	-128
Hinckley	80	47	60.7	-3.9	6.05	5.12	4.66	.38	1356	-248
MSP Airport	81	52	66.2	-3.8	2.09	1.17	2.74	-4.06	2004	-72
St. Paul - UofM	79	50	64.4	-6.1	1.89	.90	1.14	-7.60	1886	-242
<u>SW DIST 6</u>										
Lamberton	79	52	65.2	-3.5	1.56	.80	.32	-3.86	1794	-236
Marshall	81	52	65.5	-4.4	.58	-.10	-.67	-4.75	1823	-239
Redwood Falls	81	52	65.8	-4.6	1.88	1.07	-.41	-7.49	1927	-214
Worthington	77	51	63.6	-4.0	2.07	1.27	1.05	.13	1723	-180
<u>SC DIST 8</u>										
Faribault	87	47	64.4	-3.8	1.41	.40	1.32	-3.22	1761	-174
Mankato	80	51	64.2	-5.1	2.06	1.04	-.40	-8.19	1744	-273
Waseca	77	49	62.8	-5.6	1.26	.21	-.79	-7.82	1732	-237
Winnebago	81	50	64.8	-4.3	2.03	1.07	-.83	-6.72	1885	-148
<u>SE DIST 9</u>										
Preston	80	43	63.7	-4.0	1.20	.14	.75	-2.52	1689	-166
Red Wing	82	51	65.2	-4.2	3.07	2.18	4.11	-.68	1755	-247
Rochester	76	48	62.6	-4.7	.98	.02	.70	-1.75	1666	-169
Rosemount	79	50	64.0	-4.1	1.45	.41	3.04	-3.20	1707	-204

Corn growing degree days (GDD) are calculated by subtracting a 50 degree base temperature from the average of the maximum and minimum temperature for the day. The daily maximum is limited to 86 degrees and minimum of 50 degrees.

The MINNESOTA WEEKLY CROP-WEATHER REPORT (USPS-387190) is published weekly in April through November (crop season). Subscription rates are \$15.00 per year for non-reporters and free to survey respondents by the USDA-NASS Minnesota Field Office, P O Box 7068, St. Paul, MN 55107. Periodicals postage paid at St. Paul, Minnesota and other mailing offices. POSTMASTER: Send address changes to the MINNESOTA WEEKLY CROP-WEATHER REPORT, P O Box 7068, St. Paul, MN 55107.

Address Service Requested

Publication No. 387190  
 Minnesota Crop-Weather Report  
 WEEKLY NEWS REPORT

USDA, NASS, Minnesota Field Office  
 PO Box 7068, ST. PAUL, MN 55107

PRESORTED  
 FIRST CLASS MAIL  
 POSTAGE & FEES PAID  
 USDA PERMIT NO G-38