



Missouri Crop & Livestock Reporter

Cooperating with Missouri Department of Agriculture
Missouri Field Office · 601 Business Loop 70 West, Ste 240 · Columbia, MO 65203
573-876-0950 · www.nass.usda.gov/mo

CLR-0903

March 25, 2009

January Farm Labor

Missouri Highlights: The Cornbelt II region (Missouri and Iowa) had 20,000 workers on farms and ranches during the survey week of January 11-17, 2009. The workers hired estimate is down from 32,000 workers of the October 2008 survey week and down from the 27,000 hired workers in the January 2008 survey week.

The average wage rate per hour for all hired workers during the January 2009 survey week was \$11.40 per hour, down 2 cents from a year ago and down 10 cents from the October 2008 average. Field workers were paid an average of \$11.06 per hour, livestock workers \$11.27 per hour, and combined field and livestock workers \$11.20 per hour for the survey week of January 2009.

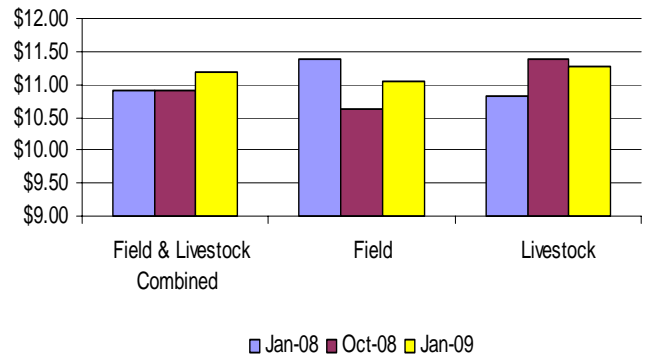
U.S. Highlights: There were 785,000 hired workers on the Nation's farms and ranches during the week of January 11-17, 2009, up 2 percent from a year ago. Of these hired workers, 595,000 workers were hired directly by farm operators. Agricultural service employees on farms and ranches made up the remaining 190,000 workers.

Farm operators paid their hired workers an average wage of \$10.93 per hour during the January 2009 reference week, up 12 cents from a year earlier. Field

workers received an average of \$9.96 per hour, up 29 cents from last January, while livestock workers earned \$10.27 per hour compared with \$10.18 a year earlier. The field and livestock worker combined wage rate, at \$10.08 per hour, was up 20 cents from last year.

The number of hours worked averaged 38.3 hours for hired workers during the survey week, down fractionally from a year ago.

**Cornbelt II Wage Rates
by Type of Workers**



**Farm Labor and Wage Rates, Cornbelt II (Missouri and Iowa)
January 2008, October 2008, and January 2009^{1/}**

Item	January 6-12, 2008	October 12-18, 2008	January 11-17, 2009
FARM EMPLOYMENT - Hired Workers		<i>Thousands</i>	
Number of Workers	27	32	20
		<i>Hours per Week</i>	
Numbers of Hours Worked per Worker	36.8	37.0	34.0
FARM WAGE RATES - Type of Worker		<i>Dollars Per Hour</i>	
All Hired Workers	11.42	11.50	11.40
Field Workers	11.38	10.62	11.06
Livestock Workers	10.82	11.37	11.27
Field & Livestock Workers Combined	10.90	10.90	11.20

^{1/} Excludes Agricultural Service Workers.

The complete NASS Report can be accessed at:
<http://usda.mannlib.cornell.edu/MannUsda/viewDocumentInfo.do?documentID=1063>

Total Red Meat Production Sets All Time Record High in 2008

Total red meat production for the United States totaled 50.4 billion pounds in 2008, 3 percent higher than the previous year. Red meat includes beef, veal, pork, and lamb and mutton. Red meat production in commercial plants totaled 50.2 billion pounds. On-farm production totaled 137 million pounds.

Beef production totaled 26.7 billion pounds, up 1 percent from the previous year. Veal production totaled 152 million pounds, up 4 percent from last year. Pork production, at 23.4 billion pounds, was 6 percent above the previous year. Lamb and mutton production totaled 180 million pounds, down 5 percent from 2007.

Commercial cattle slaughter during 2008 totaled 34.4 million head, up slightly from 2007, with federal inspection comprising 98.4 percent of the total. The average live weight was 1,282 pounds, up 9 pounds from a year ago. Steers comprised 50.1 percent of the total federally inspected cattle slaughter, heifers 29.9 percent, dairy cows 7.7 percent, other cows 10.6 percent, and bulls 1.8 percent.

Commercial calf slaughter totaled 956,600 head, 26 percent higher than a year ago with 98.5 percent under federal inspection. The average live weight was 257 pounds, down 48 pounds from a year earlier.

Commercial hog slaughter totaled 116.5 million head, 7 percent higher than 2007 with 99.1 percent of the hogs slaughtered under federal inspection. The average live weight was down 1 pound from last year, at 268 pounds. Barrows and gilts comprised 96.6 percent of the total federally inspected hog slaughter.

Commercial sheep and lamb slaughter, at 2.56 million head, was down 5 percent from the previous year with 93.7 percent comprised by federal inspection. The average live weight was unchanged from 2007 at 136 pounds. Lambs and yearlings comprised 94.9 percent of the total federally inspected sheep slaughter.

Annual Commercial Red Meat Slaughter and Red Meat Production ^{1/2/}

Item	Missouri		United States	
	2007	2008	2007	2008
Head	<i>Thousands</i>			
Cattle	87.0	91.0	34,364	34,365
Calves	0.4	0.8	758.1	956.6
Hogs	6,928.7	7,912.0	109,171.6	116,451.9
Sheep & Lambs	5.6	6.1	2,693.8	2,555.5
Average Live Weight	<i>Pounds</i>			
Cattle	1,215	1,198	1,273	1,282
Calves	334	403	305	257
Hogs	275	273	269	268
Sheep & Lambs	116	117	136	136
Dressed Weight	<i>Million Pounds</i>			
Red Meat	1,500.2	1,690.8	48,683.8	5,0224.6

1/ Includes slaughter in federally inspected and in other slaughter plants, but exclude animals slaughtered on farms.

2/ Averages are based on unrounded data.

The complete NASS Report can be accessed at:

<http://usda.mannlib.cornell.edu/MannUsda/viewDocumentInfo.do?documentID=1097>

Missouri Annual Egg Production Unchanged

Egg production in **Missouri** totaled 1.88 billion eggs during the year ending November 30, 2008, unchanged from a year ago. The number of layers averaged 6.85 million, down 4 percent from the 2007 average number of layers of 7.13 million. The annual rate of lay for 2008, at 275 eggs per layer was up slightly from 2007.

U.S. Average Number of Layers Down 2 Percent: Layer numbers during 2008 averaged 340 million, down 2 percent from the year earlier. The annual average production per layer on hand in 2008 was 266 eggs, down 1 percent from 2007.

U.S. Egg Production Down 1 Percent: Egg production during the year ending November 30, 2008 totaled 90.2 million eggs, down 1 percent from 2007. Table egg production, at 76.8 million eggs, was down 1 percent from the previous year. Hatching egg production, at 13.3 million eggs, was down 1 percent from 2007.

U.S. December 1 Inventory Numbers: The total number of chickens on hand on December 1, 2008 (excluding commercial broilers) was 446 million birds, down 3 percent from last year.

U.S. Total Value: The total value of all chickens on December 1, 2008 was \$1.51 billion, up 11 percent from December 1, 2007. The average value increased from \$2.95 per bird on December 1, 2007, to \$3.38 per bird on December 1, 2008.

Annual All Layers and Egg Production, 2007-2008 ^{1/2/}

State	Average Number of Layers		Eggs per Layer ^{4/}		Total Egg Production	
	2007 ^{3/}	2008	2007 ^{3/}	2008	2007 ^{3/}	2008
	<i>Thousands</i>		<i>Number</i>		<i>Million Eggs</i>	
AR	13,906	13,371	233	235	3,236	3,139
IA	52,401	53,523	265	269	13,868	14,407
MO	7,133	6,854	264	275	1,881	1,885
US	346,498	339,572	263	266	91,101	90,151

1/ Annual estimates cover the period Dec 1 previous year thru Nov 30.

2/ Total may not add due to rounding.

3/ Revised

4/ Total egg production divided by average number of layers on hand.

The complete NASS Report can be accessed at:

<http://usda.mannlib.cornell.edu/MannUsda/viewDocumentInfo.do?documentID=1509>

Celebrate!

National Agriculture Day

March 20, 2009

National Ag Week - March 15-21, 2009



What is Ag Day?
When Is Ag Day?
Who Hosts Ag Day?
What is Ag Day all about?
Why celebrate agriculture?
What can I do to help?
Where can I find more information?

Learn more about Ag Day at: www.agday.org

or you can also contact

Agriculture Council of America

(913) 491-1895

e-mail: info@agday.org

January Milk Production ^{1/}

State	Milk Cows ^{2/}		Milk Per Cows ^{3/}		Milk Production ^{3/}	
	2008	2009	2008	2009	2008	2009
	1000 Head		Pounds		Million Pounds	
IL	103	102	1,615	1,610	166	164
IA	216	215	1,680	1,700	363	366
MO	110	108	1,225	1,270	135	137
23-State Total	8,451	8,509	1,741	1,746	14,714	14,855

1/ 2008 Revised

2/ Includes dry cows, excludes heifers not yet fresh.

3/ Excludes milk sucked by calves.

The complete NASS Report can be accessed at:

<http://usda.mannlib.cornell.edu/MannUsda/viewDocumentInfo.do?documentID=1103>

U.S. Dairy Production by Product, Jan 2009

Product	Jan 2009	Change From	
		Jan 2008	Dec 2008
	1,000 Pounds	Percent	
Butter	174,741	3.5	11.8
Cheese			
American Types ^{1/}	353,423	5.8	-1.7
Total	820,964	1.0	-4.4
	1,000 Gallons	Percent	
Frozen Products			
Ice Cream, Hard	58,159	-7.9	6.8
Ice Cream, Lowfat, Total	23,726	-3.9	4.6
Ice Cream, Nonfat, Hard	773	-17.1	-15.4
Sherbet, Hard	3,616	-10.2	1.1
Frozen Yogurt, Total	3,416	-4.5	-3.3
	1,000 Pounds	Percent	
Dry Whey Products			
Dry Whey, Human	82,962	-2.4	-3.9
Dry Whey, Animal	5,462	-19.1	10.8
Dry Whey, Total	88,424	-3.6	-3.1

1/ Includes Cheddar, Colby, Monterey and Jack.

The complete NASS Report can be accessed at:

<http://usda.mannlib.cornell.edu/MannUsda/viewDocumentInfo.do?documentID=1052>

Chicks Hatched by Commercial Hatcheries

Item	January		Jan - Jan	
	2008	2009	2008	2009
	1,000			
Broiler-Type				
19 States ^{1/}	798,113	754,965	798,113	754,965
U.S.	821,866	778,401	821,866	778,401
Egg-Type				
U.S.	40,167	38,083	40,167	38,083

1/ States in the weekly hatchery production estimating program.

The complete NASS Report can be accessed at:

<http://usda.mannlib.cornell.edu/MannUsda/viewDocumentInfo.do?documentID=1028>

Average Prices Received by Farmers ^{1/}

Commodity	Unit	Missouri			U.S.
		Feb 2008*	Jan 2009	Feb 2009 ^{2/}	Feb 2009 ^{2/}
		Dollars			
Winter Wheat	Bu	8.03	4.35	4.20	5.20
Corn	Bu	4.51	4.37	4.35	4.13
Soybeans	Bu	11.90	9.82	9.40	9.58
Sorghum	Cwt	8.39	6.34	6.00	5.09
BALED HAY ^{2/}					
All Hay	Ton	110.00	101.00	103.00	132.00
Alfalfa	Ton	160.00	165.00	165.00	143.00
Other	Ton	92.00	85.00	85.00	107.00
ALL BEEF					
Cows ^{3/}	Cwt	50.20	40.00	43.30	44.30
Steers & Heifers	Cwt	101.00	94.10	93.20	85.40
Cattle ^{4/}	Cwt	83.70	77.90	76.20	80.20
Calves	Cwt	117.00	106.00	107.00	105.00
ALL HOGS					
Sows	Cwt	20.60	42.90	42.00	43.40
Barrows & Gilts	Cwt	37.50	37.70	38.00	43.50
All Hogs	Cwt	36.10	38.10	38.30	43.50
Market Eggs ^{2/}	Doz	1.180	0.850	0.610	0.639
MILK					
Fluid Grade ^{5/}	Cwt	19.80	15.00		11.50
Manufacturing Grade ^{5/}	Cwt	16.10	10.00		11.80
All Milk ^{5/}	Cwt	19.70	14.80	12.40	11.50
HOG/CORN Ratio ^{6/}		8.00	8.72	8.80	10.53

1/ Prices received represent the average of all grades or classes at point of first sale and should not be confused with market quotations of specific grades or classes.

2/ Mid-month prices.

3/ Beef cows and cull dairy cows sold for slaughter.

4/ "Cows" and "Steers & Heifers" combined.

5/ Missouri January fat test %: all milk 3.7

9, fluid grade 3.78, mfg grade 4.00.

U.S. February fat test %: all milk 3.77, fluid grade 3.76, mfg grade 4.07.

6/ "All Hogs" divided by "Corn" prices.

* Revised.

The complete NASS Report can be accessed at:

<http://usda.mannlib.cornell.edu/MannUsda/viewDocumentInfo.do?documentID=1002>

January 2009 Egg Production

State	Number of Layers on Hand ^{1/}	Eggs per 100 for All Layers	Total Production
			Million Eggs
	1,000	Number	Million Eggs
AR	12,923	1,989	257
IA	53,753	2,275	1,223
MO	7,184	2,325	167
U.S.	340,946	2,249	7,667

1/ Includes all layers and eggs produced in both table egg and hatching egg flocks regardless of size.

The complete NASS Report can be accessed at:

<http://usda.mannlib.cornell.edu/MannUsda/viewDocumentInfo.do?documentID=1028>

United States Honey Production Up 8 Percent

Honey production in 2008 from producers with five or more colonies totaled 161 million pounds, up 8 percent from 2007. There were 2.30 million colonies producing honey in 2008, down 6 percent from 2007. Yield per colony averaged 69.9 pounds, up 15 percent from the 60.7 pounds in 2007. Colonies which produced honey in more than one State were counted in each State where the honey was produced. Therefore, yields per colony may be understated, but total production would not be impacted. Colonies were not included if honey was not harvested. Producer honey stocks were 50.4 million pounds on December 15, 2008, down 4 percent from a year earlier. Stocks held by producers exclude stocks held under the commodity loan program.

Honey Number of Colonies, Yield, Production, Stocks, Price, and Value by Selected States and United States, 2007- 2008 ^{1/}

State	Honey Producing Colonies ^{3/}		Yield per Colony		Production		Stocks Dec 15 ^{4/}		Average Price per Pound ^{5/}		Value of Production ^{6/}	
	2007	2008	2007	2008	2007	2008	2007	2008	2007	2008	2007	2008
	<i>1,000 Pounds</i>						<i>Cents</i>				<i>1,000 Dollars</i>	
AR	28	28	80	75	2,240	2,100	672	525	95	131	2,128	2,751
IL	9	8	63	56	567	448	374	116	249	246	1,412	1,102
IA	26	24	81	62	2,106	1,488	1,221	580	131	156	2,759	2,321
MO	14	11	46	53	644	583	148	152	112	178	721	1,038
U.S. ^{7/8/}	2,443	2,301	60.7	69.9	148,341	160,861	52,635	50,445	107.7	141	159,763	226,814

¹ For producers with 5 or more colonies. Colonies which produced honey in more than one State were counted in each State. ^{2/} Revised ^{3/} Honey producing colonies are the maximum number of colonies from which honey was taken during the year. It is possible to take honey from colonies which did not survive the entire year. ^{4/} Stocks held by producers. ^{5/} Average price per pound based on expanded sales. ^{6/} Value of production is equal to production multiplied by average price per pound. ^{7/} Due to rounding, total colonies multiplied by total yield may not exactly equal production. ^{8/} Summation of States will not equal U.S. level value of production.

The complete NASS Report can be accessed at:

<http://usda.mannlib.cornell.edu/MannUsda/viewDocumentInfo.do?documentID=1191>

Look for these reports at: <http://www.nass.usda.gov/Publications/index.asp>

Milk Production - March 18

Cattle on Feed - March 20

Chickens and Eggs - March 23

Agricultural Prices - March 30

Quarterly Hogs and Pigs - March 27

Prospective Planting and Grain Stocks - March 31

PRSRT STD
 POSTAGE & FEES PAID
 NATIONAL AGRICULTURAL STATISTICS
 SERVICE
 PERMIT NO. G 38



ADDRESS SERVICE REQUESTED

USDA NASS, Missouri Field Office
 Agricultural Statistician
 Post Office Box L
 Columbia MO 65205