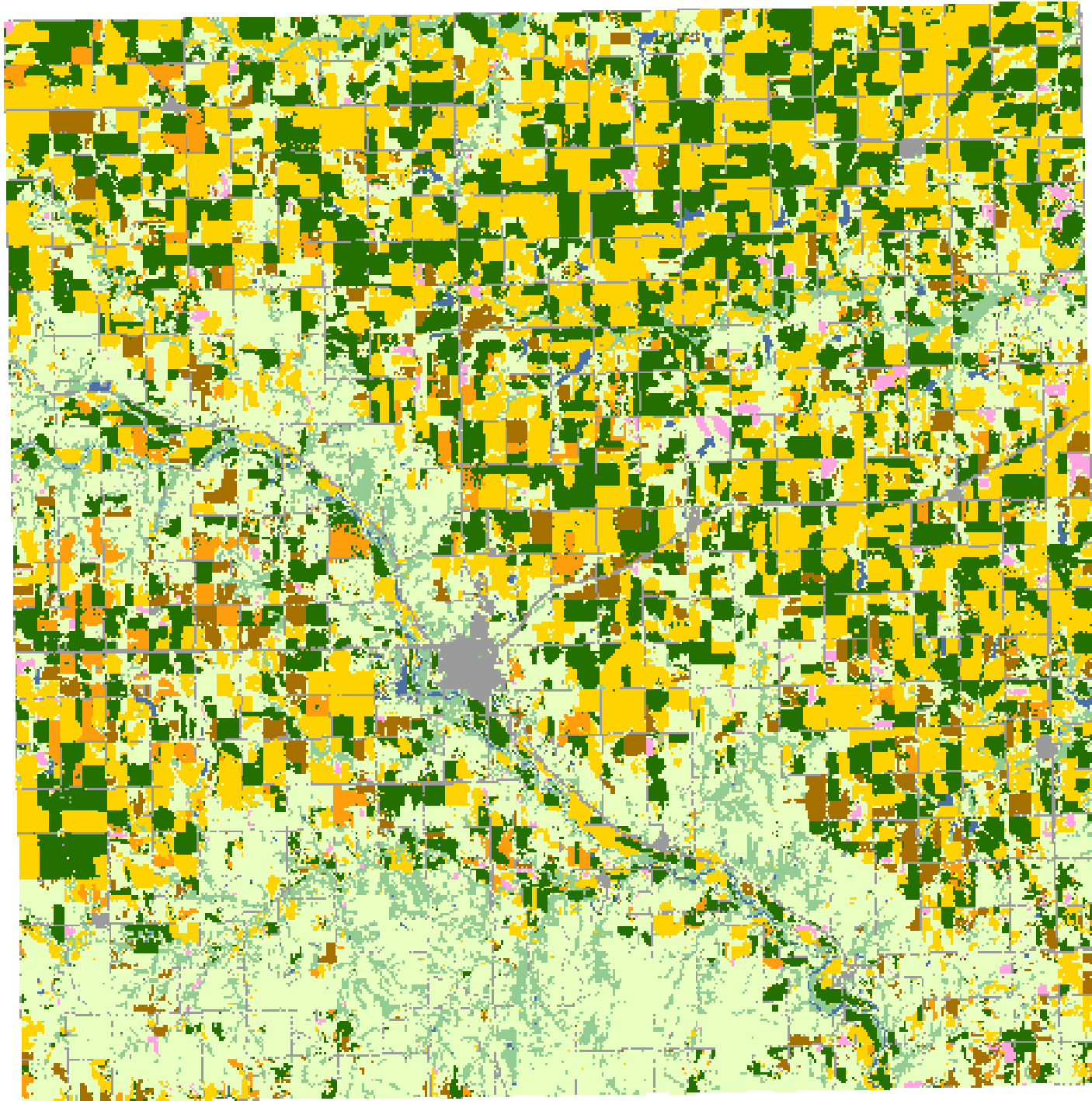
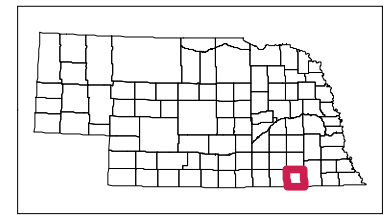


2008 Jefferson County, Nebraska



Land Cover Categories Agriculture

-  Pasture/Grass
-  Corn
-  Soybeans
-  Winter Wheat
-  Fallow/Idle Cropland
-  Alfalfa
-  Sorghum
-  Millet
-  Dry Beans
-  Oats
-  Sunflowers
-  Sugarbeets
-  Potatoes
-  Rye
-  Spring Wheat
-  Other Small Grains
-  W. Wht./Soy. Dbl. Crop.
-  Seed/Sod Grass
-  Other Crops
-  Barley
-  Canola

Non-Agriculture

-  Urban/Developed
-  Woodland
-  Wetlands
-  Water
-  Barren
-  Shrubland

