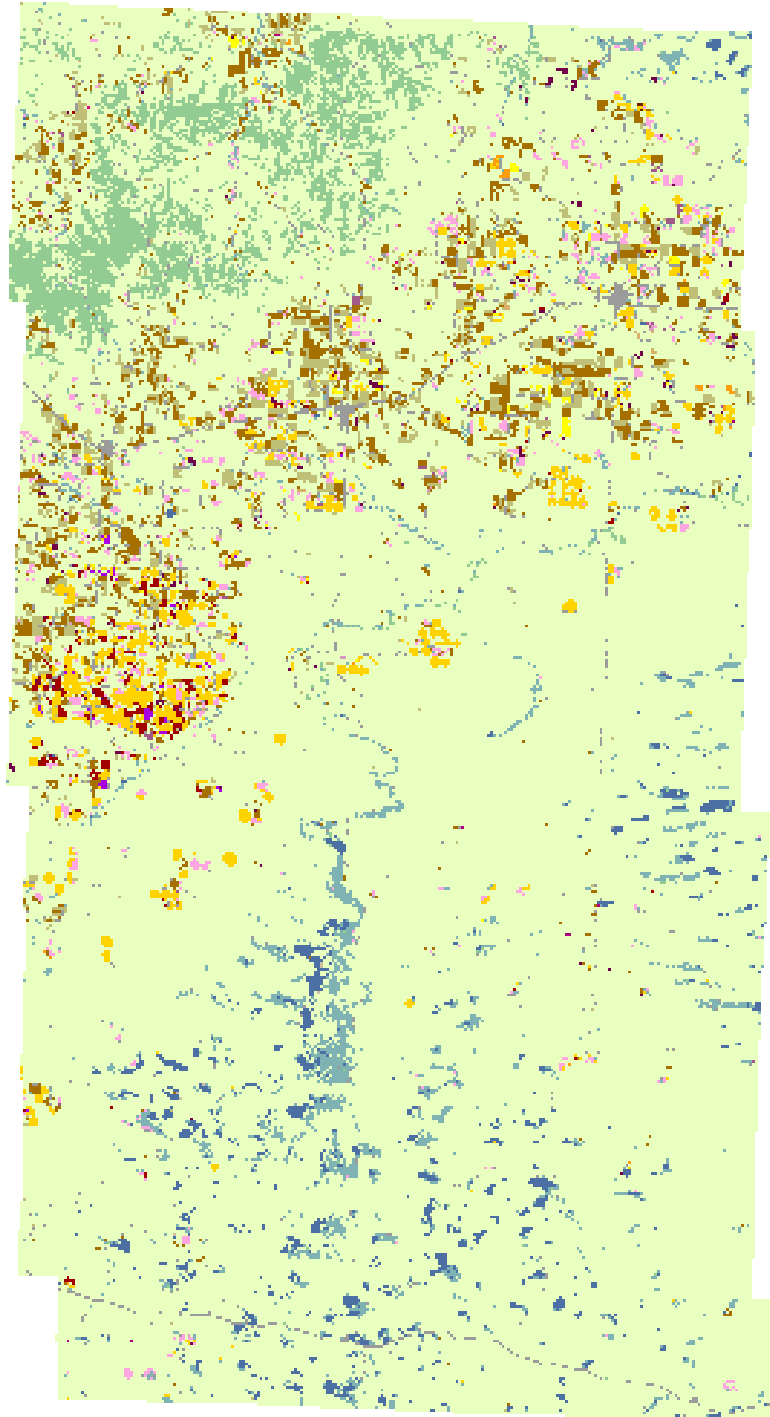
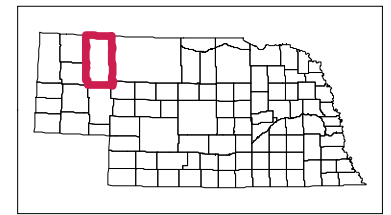


# 2008 Sheridan County, Nebraska



## Land Cover Categories

### Agriculture

- Pasture/Grass
- Corn
- Soybeans
- Winter Wheat
- Fallow/Idle Cropland
- Alfalfa
- Sorghum
- Millet
- Dry Beans
- Oats
- Sunflowers
- Sugarbeets
- Potatoes
- Rye
- Spring Wheat
- Other Small Grains
- W. Wht./Soy. Dbl. Crop.
- Seed/Sod Grass
- Other Crops
- Barley
- Canola

### Non-Agriculture

- Urban/Developed
- Woodland
- Wetlands
- Water
- Barren
- Shrubland

