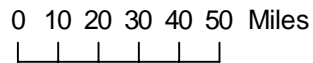
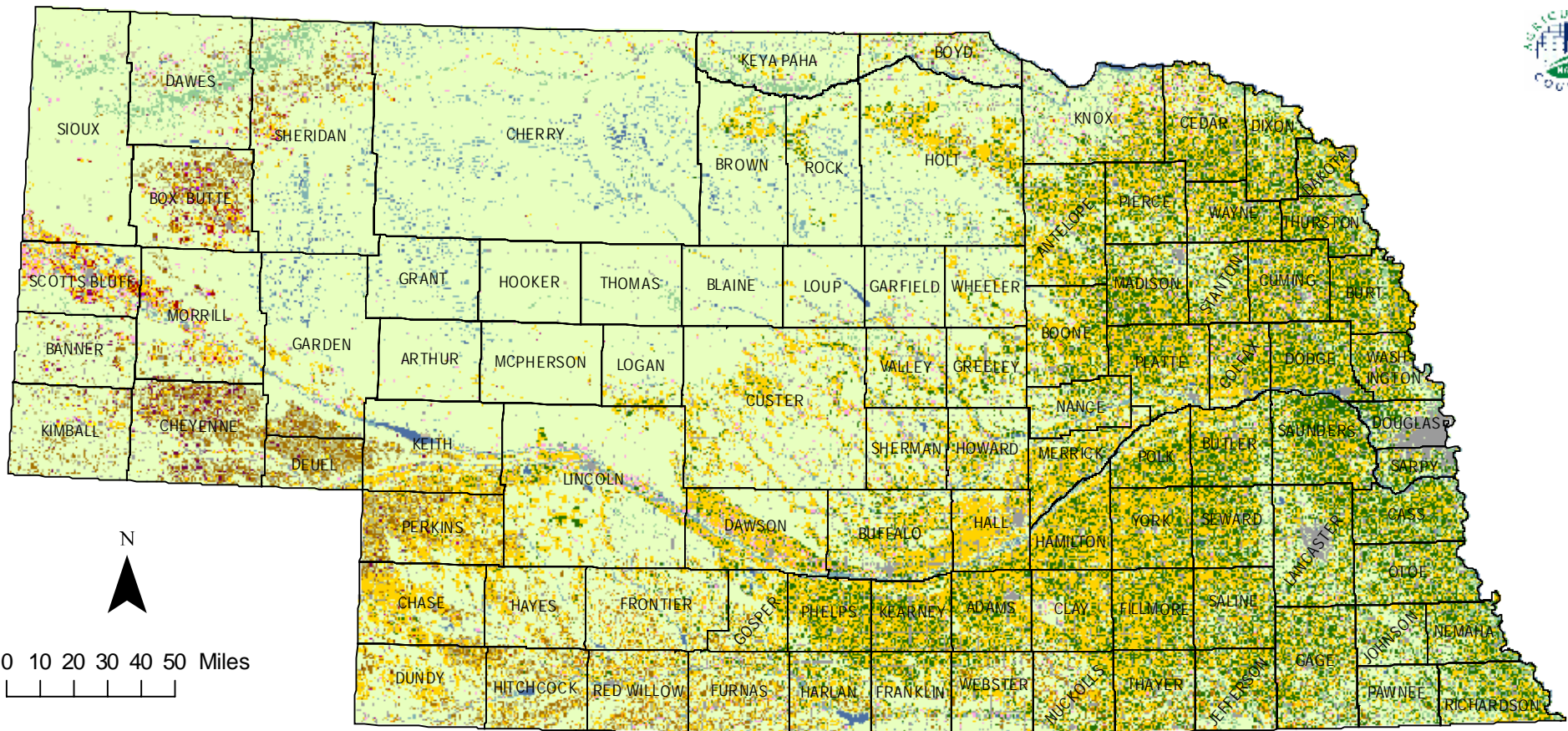


# 2008 Nebraska Cropland Data Layer



Data Source: Resourcesat-1 AWiFS courtesy of USDA Foreign Agricultural Service.

Image Processing: Rulequest See5 and ERDAS Imagine.

Ground Truth: The Farm Service Agency Common Land Unit for crops classes, and 2001 National Land Cover Dataset (NLCD) for non-agricultural classes.

Ancillary Data: NLCD Impervious Surface, NLCD Forest Canopy, National Elevation Dataset, and Moderate Resolution Imagery Spectroradiometer (MODIS) 16 day Normalized Difference Vegetation Index (NDVI) composite.

Projection: UTM zone 14, WGS84 datum.

Map Production: ArcGIS 9.3.

## Land Cover Categories

(Ordered by Decreasing Acreage)

### Agricultural

- Corn
- Soybeans
- Winter Wheat
- Alfalfa
- Sorghum
- Millet
- Dry Beans
- Sugarbeets
- Oats
- Sunflowers
- Rye
- W. Wht./Soy. Dbl. Crop.
- Potatoes
- Misc. Veggies. & Fruits

### Non-Agricultural

- Grass/Pasture/Non-Ag
- Urban/Developed
- Wetlands
- Woodland
- Fallow/Idle Cropland
- Water
- Barren
- Shrubland
- Other Small Grains
- Spring Wheat
- Barley
- Canola
- Christmas Trees
- Other Crops
- Clover/Wildflowers