

2009

Blueberry Statistics



New Jersey Agricultural Statistics Service

a field office of the
National Agricultural Statistics Service
United States Department of Agriculture
in cooperation with the New Jersey Department of Agriculture

February 2010

Who we are

The mission of USDA's National Agricultural Statistics Service (NASS) is to provide timely, accurate, and useful statistics in service to United States agriculture. All 46 field offices are operated under cooperative funding arrangements with State Departments of Agriculture and/or land-grant universities. Statistics are based on data collected from growers and agribusinesses through annual, quarterly, monthly, and weekly surveys and the Census of Agriculture.

Nationwide: About 500 national reports are issued annually covering about 120 crop and 45 livestock items in the major-producing states along with economic and demographic information. Each report is published according to a pre-set calendar of release dates. Strict security ensures that no one gains premature access to the information. The Census of Agriculture is conducted every five years to generate statistics for ALL agricultural commodities at the county, state, and national levels. The five-year program also includes special studies like the Census of Horticulture and Aquaculture. Census products and services are available from all field offices.

New Jersey: The New Jersey field office issues about 65 reports annually such as the *New Jersey Farm Facts*, *Weekly Crop Weather Report*, *Jersey Fresh Fruit and Vegetable Crops*, and an annual summary with historical comparisons and county statistics for our major commodities.

Reports are available via the Web at www.nass.usda.gov.

2009 Blueberry Statistics

New Jersey ranked second in the nation in the production of cultivated blueberries in 2009. Michigan was ranked first. The total value of the 2009 blueberry crop in New Jersey was \$65.3 million, down 20 percent from the previous year. Although producers harvested slightly more acreage, the yield and prices were down. Utilized production was down 10 percent from 2008 to 53.0 million pounds. The overall season average price was \$1.23 per pound, down \$0.16 from the previous year. The average fresh market price was \$1.34 per pound, while the processing price was \$0.62 per pound. The processing price per pound was 45 cents below the 2008 price level of \$1.07 per pound.

The area harvested, at 7,700 acres was an increase of 100 acres from 2008. The state average yield per acre was 6,880 pounds per acre compared to 7,760 pounds in 2008 and 7,110 pounds per acre in 2007.

Atlantic and Burlington Counties accounted for 95 percent of the area harvested and 98 percent of New Jersey's utilized production. The top blueberry producing county in New Jersey was Atlantic County, with 6,100 acres harvested and an average yield of 7,640 pounds per acre. Utilized production for Atlantic County was 46.6 million pounds. Burlington County producers harvested 1,200 acres with an average yield of 4,580 pounds per acre and utilized production of 5.5 million pounds.

Sincerely,



Troy M. Joshua, Director

P.O. Box 330 Trenton, NJ 08625
PHONE: (800) 328-0179 FAX: (800) 625-7581
www.nass.usda.gov

USDA is an equal opportunity provider and employer

& Value of Utilized Production, by State, 2009

State	Area Harvested	Yield per Acre ^{1/}	Utilized Production
	- acres -	- lbs -	- 1,000 lbs -
Alabama	310	968	300
Arkansas	300	1,670	500
California	2,700	8,520	23,000
Florida	3,200	4,220	13,500
Georgia	10,500	4,100	43,000
Indiana	660	5,610	3,700
Michigan	18,500	5,350	99,000
Mississippi	2,700	2,410	6,500
New Jersey	7,700	6,880	53,000
New York	900	2,330	2,100
North Carolina	5,500	5,950	32,700
Oregon	5,700	8,420	48,000
Washington	4,500	8,000	36,000
US	63,170	5,720	361,300

1/ Yield is based on utilized production.

State	Value of Utilized Production	Price per Pound		
		Fresh	Processed	All
	- 1,000 dollars -	- - - dollars per pound - - -		
Alabama	492	1.640	*	1.640
Arkansas	860	1.720	*	1.720
California	67,390	2.930	*	2.930
Florida	72,900	5.400	*	5.400
Georgia	55,600	2.000	0.480	1.290
Indiana	5,584	1.920	0.400	1.510
Michigan	101,850	1.650	0.420	1.030
Mississippi	10,490	1.800	0.700	1.610
New Jersey	65,260	1.340	0.620	1.230
New York	4,558	2.210	0.540	2.170
North Carolina	51,330	1.900	0.400	1.570
Oregon	37,280	1.110	0.470	0.777
Washington	27,925	1.740	0.430	0.776
US	501,519	1.970	0.452	1.390

* Small quantities of processed blueberries are included in fresh to avoid disclosure of individual operations.

by County, 2007 - 2009

Year and County	Acres Harvested	Yield per Acre ^{1/}	Production		Utilized Production	
			Total	Utilized	Fresh ^{2/}	Processed
	- acres -	- lbs -	-- 1,000 lbs --		-- 1,000 lbs --	
<u>2007</u>						
Atlantic	6,100	7,800	47,600	47,600	--	--
Burlington	1,100	5,090	5,600	5,600	--	--
Other Counties	400	2,000	800	800	--	--
Total	7,600	7,110	54,000	54,000	41,000	13,000
<u>2008</u>						
Atlantic	6,100	8,510	51,900	51,900	--	--
Burlington	1,100	5,550	6,100	6,100	--	--
Other Counties	400	2,500	1,000	1,000	--	--
Total	7,600	7,760	59,000	59,000	46,000	13,000
<u>2009</u>						
Atlantic	6,100	7,640	46,600	46,600	--	--
Burlington	1,200	4,580	5,500	5,500	--	--
Other Counties	400	2,250	900	900	--	--
Total	7,700	6,880	53,000	53,000	45,000	8,000

1/ Yield is based on utilized production.

2/ Includes quantities used in farm household or given away.

"- -" means that the data is not available at the county level.

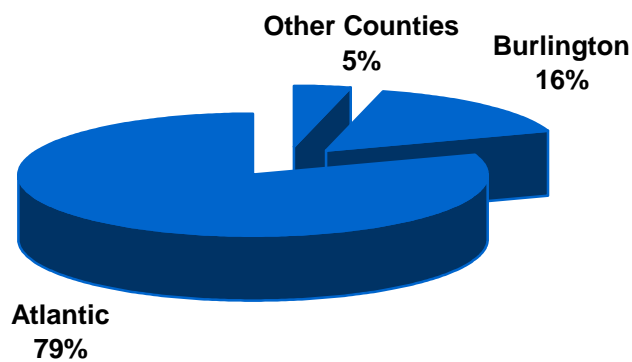
New Jersey Blueberry Price & Value of Production, 2007 - 2009

Year	Season Average Price			Value of Production
	Fresh	Processing	All	Utilized
				- - - dollars per pound - - -
2007	1.700	1.580	1.670	90,240
2008	1.480	1.070	1.390	81,990
2009	1.340	0.620	1.230	65,260

**New Jersey Blueberry Area Harvested,
by County, 2000 - 2009**

Year	Atlantic County	Burlington County	Other Counties	Total
	- acres -	- acres -	- acres -	- acres -
2000	5,400	1,600	500	7,500
2001	5,400	1,500	500	7,400
2002	5,800	1,300	300	7,400
2003	5,900	1,300	300	7,500
2004	5,900	1,300	300	7,500
2005	5,900	1,300	300	7,500
2006	6,100	1,200	300	7,600
2007	6,100	1,100	400	7,600
2008	6,100	1,100	400	7,600
2009	6,100	1,200	400	7,700

***New Jersey Blueberry Area Harvested, 2009
Percents by County***



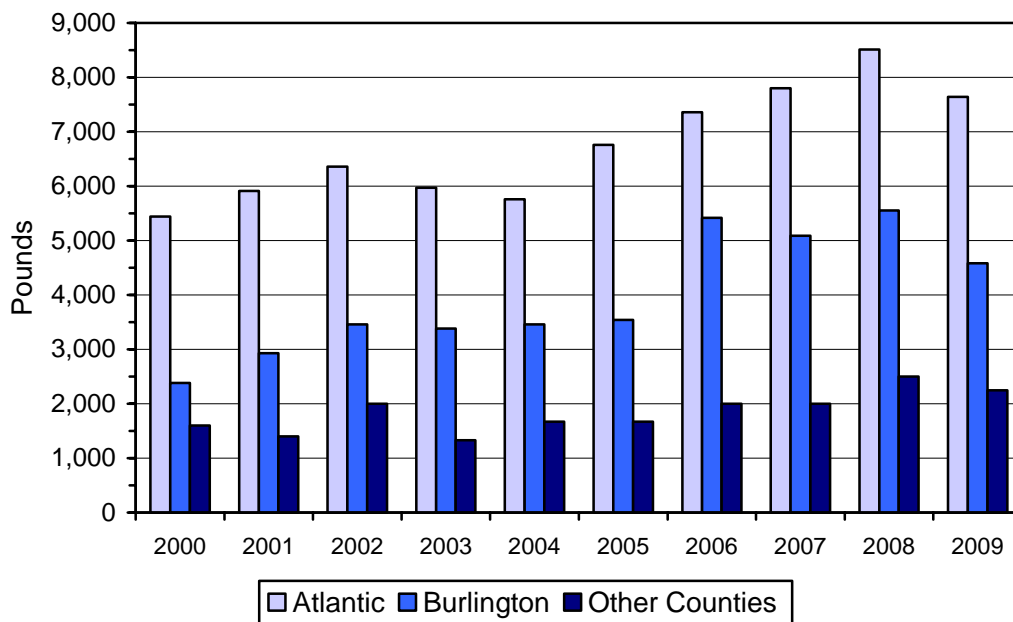
■ Other Counties
 ■ Burlington
 ■ Atlantic

**New Jersey Blueberry Yield Per Acre ^{1/},
by County, 2000 - 2009**

Year	Atlantic County	Burlington County	Other Counties	Total
	- lbs -	- lbs -	- lbs -	- lbs -
2000	5,440	2,380	1,600	4,530
2001	5,910	2,930	1,400	5,000
2002	6,360	3,460	2,000	5,680
2003	5,970	3,380	1,330	5,330
2004	5,760	3,460	1,670	5,200
2005	6,760	3,540	1,670	6,000
2006	7,360	5,420	2,000	6,840
2007	7,800	5,090	2,000	7,110
2008	8,510	5,550	2,500	7,760
2009	7,640	4,580	2,250	6,880

1/ Yield is based on utilized production.

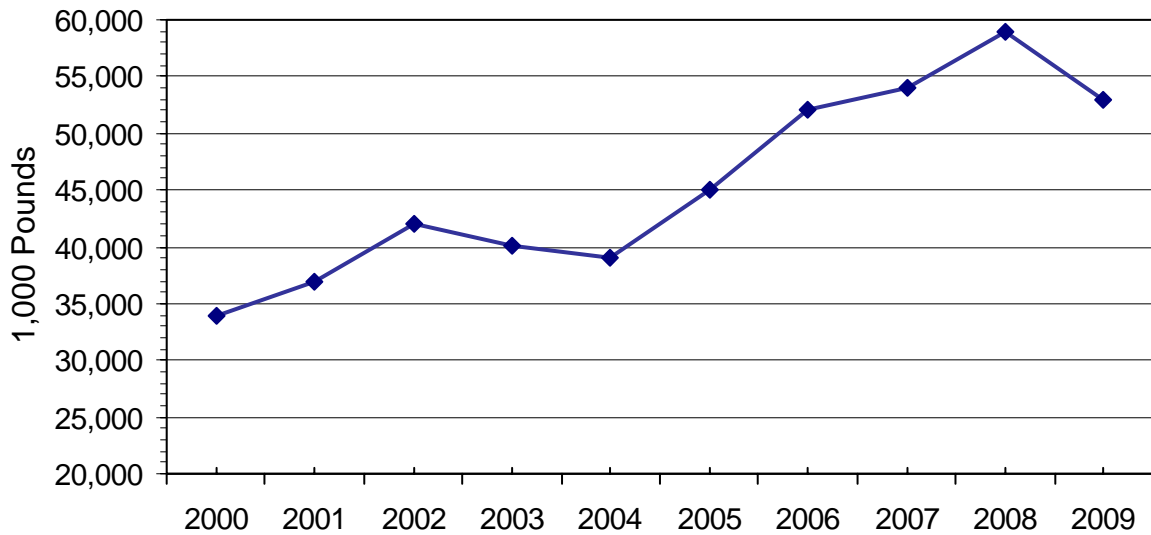
***New Jersey Blueberry Yield Per Acre,
by County, 2000 - 2009***



**New Jersey Blueberry Utilized Production,
by County, 2000 - 2009**

Year	Atlantic County	Burlington County	Other Counties	Total
	- 1,000 lbs -	- 1,000 lbs -	- 1,000 lbs -	- 1,000 lbs -
2000	29,400	3,800	800	34,000
2001	31,900	4,400	700	37,000
2002	36,900	4,500	600	42,000
2003	35,200	4,400	400	40,000
2004	34,000	4,500	500	39,000
2005	39,900	4,600	500	45,000
2006	44,900	6,500	600	52,000
2007	47,600	5,600	800	54,000
2008	51,900	6,100	1,000	59,000
2009	46,600	5,500	900	53,000

***New Jersey Blueberry Utilized Production,
2000 - 2009***

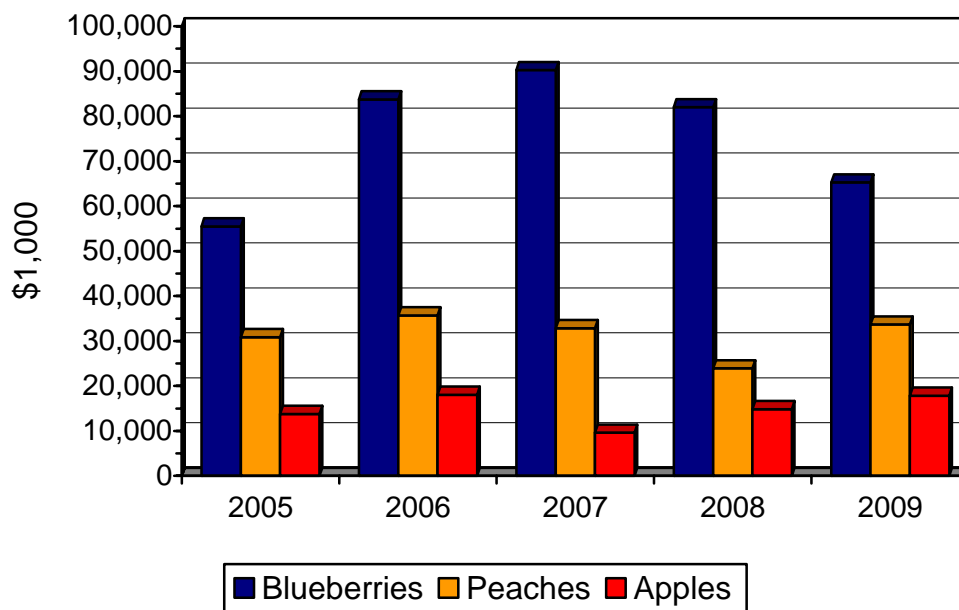


**New Jersey Apple, Blueberry, & Peach
Value of Utilized Production, 2000 - 2009**

Year	Apples	Blueberries	Peaches
	- \$1,000 -	- \$1,000 -	- \$1,000 -
2000	6,183	36,100	24,774
2001	8,117	36,730	28,350
2002	5,640	46,790	25,194
2003	5,840	45,690	24,180
2004	5,740	45,630	23,180
2005	13,779	55,470	30,869
2006	18,060	83,720	35,700
2007	9,609	90,240	32,832
2008	14,841	81,990	23,920
2009 ^{1/}	17,857	65,260	33,660

1/ Preliminary

***New Jersey Apple, Blueberry, & Peach
Value of Utilized Production, 2005 - 2009***



**Blueberry Rankings
by State, 2009**

State	Rank	Harvested Acres
Michigan	1	18,500
Georgia	2	10,500
New Jersey	3	7,700
Oregon	4	5,700
North Carolina	5	5,500
Washington	6	4,500
Florida	7	3,200
Mississippi ^{1/}	8	2,700
California ^{1/}	8	2,700
New York	9	900
Indiana	10	660
Alabama	11	310
Arkansas	12	300

1/ California and Mississippi are tied for 8th.

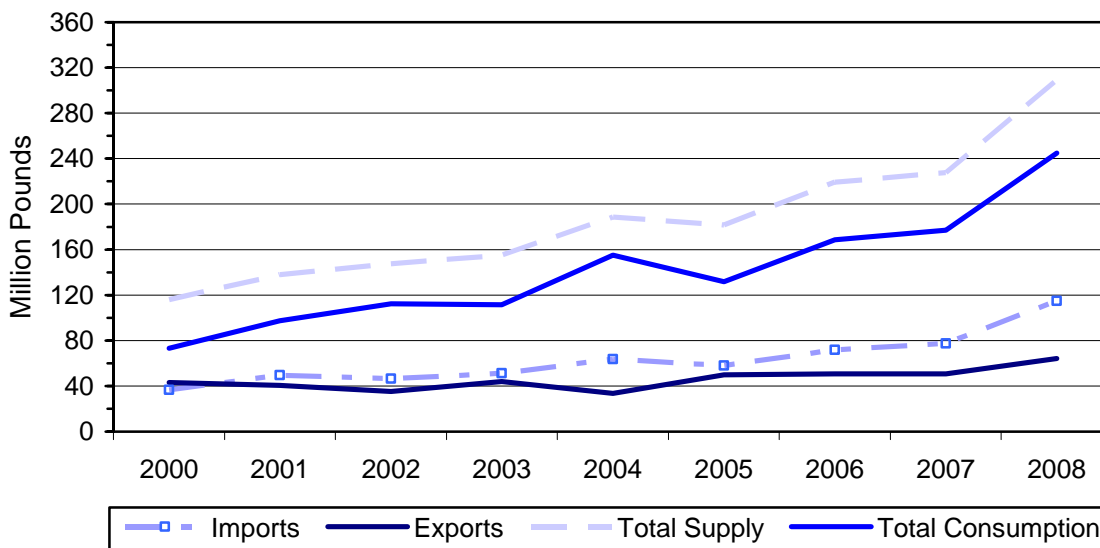
State	Rank	Yield per Acre ^{1/} (lbs)
California	1	8,520
Oregon	2	8,420
Washington	3	8,000
New Jersey	4	6,880
North Carolina	5	5,950
Indiana	6	5,610
Michigan	7	5,350
Florida	8	4,220
Georgia	9	4,100
Mississippi	10	2,410
New York	11	2,330
Arkansas	12	1,670
Alabama	13	968

1/ Yield is based on utilized production.

State	Rank	Utilized Production (1,000 lbs)
Michigan	1	99,000
New Jersey	2	53,000
Oregon	3	48,000
Georgia	4	43,000
Washington	5	36,000
North Carolina	6	32,700
California	7	23,000
Florida	8	13,500
Mississippi	9	6,500
Indiana	10	3,700
New York	11	2,100
Arkansas	12	500
Alabama	13	300

State	Rank	Value of Utilized Production (\$1,000)
Michigan	1	101,850
Florida	2	72,900
California	3	67,390
New Jersey	4	65,260
Georgia	5	55,600
North Carolina	6	51,330
Oregon	7	37,280
Washington	8	27,925
Mississippi	9	10,490
Indiana	10	5,584
New York	11	4,558
Arkansas	12	860
Alabama	13	492

**US Imports, Exports, Total Supply and Total Consumption
of Fresh Blueberries, 2000 - 2008 1/**



1/ Both cultivated and wild fresh blueberries are included.
Source: Fruit and Tree Nuts Situation and Outlook Yearbook, October 2009,
Economics Research Service, USDA.

2010 Blueberry Survey and Release Dates

Forecast Survey	June 2010
State Release	August 2010 ^{1/}
Final Production, Disposition and Prices Received Survey	September 2010
USDA Release	January 2010 ^{2/}

1/ State estimate only, not USDA Official Estimate.
2/ USDA Official Estimate.

We ensure the confidentiality of all individual reports. No person (outside of Agricultural Statistics Service personnel), organization, or other local, state, or federal government agency has access to any report an individual submits to us. Individual reports are used only in combination with other reports and are summarized to develop county, state, and national blueberry production estimates.

The publication and dissemination of agricultural statistics are possible only through the support and cooperation of the New Jersey Department of Agriculture and the agricultural industry. The New Jersey Agricultural Statistics Service would like to thank those producers who responded to our surveys and furnished information for the Blueberry Program.