



United States Department of Agriculture
National Agricultural Statistics Service
New Jersey Field Office
Cooperating with New Jersey Department of Agriculture



Cranberry Highlights

New Jersey Cranberry Crop Valued at \$25 Million

New Jersey cranberry producers realized a total value of utilized production of \$25.4 million in 2008, compared to \$22.4 million in 2007. Cranberry price per barrel increased in 2008 to \$49.70 per barrel, compared to \$42.20 per barrel in 2007 and \$39.20 per barrel in 2006. Growers produced on average 165.2 barrels per acre in 2008, down 6.1 barrels per acre from 2007.

New Jersey ranked third in the nation in total production of cranberries. In 2008, New Jersey cranberry production totaled 512,000 barrels, down 4 percent from the 2007 crop of 531,000 barrels. Harvested cranberry acreage remained unchanged from the 2007 growing season at 3,100 acres.

United States Cranberry Production Up 16 Percent

The United States cranberry total production, at 7.61 million barrels in 2008, was up 16 percent from the 6.55 million barrels the previous year. Harvested acreage, at 38,200, was up 100 acres from 2007. Wisconsin showed an increase in acreage, while Massachusetts, New Jersey, Oregon, and Washington remained the same as 2007. The average yield in 2008 was 199.1 barrels per acre nationwide, a increase of 27.1 barrels per acre from the 172.0 barrels in 2007.

Sincerely,

Troy M. Joshua
Director

P. O. Box 330 · Trenton, NJ 08625
(800) 328-0179 · (800) 625-7581 FAX · www.nass.usda.gov

USDA is an equal opportunity provider and employer.

Cranberries, 2006 - 2008

Area Harvested, Yield, and Production

YEAR AND STATE	AREA HARVESTED	YIELD PER ACRE ¹	PRODUCTION ²	
			TOTAL	UTILIZED
	(acres)		-- barrels ³ --	
2006				
Massachusetts	13,500	139.7	1,886,000	1,886,000
New Jersey	3,100	156.5	485,000	480,000
Oregon	2,700	172.2	465,000	465,000
Washington	1,700	67.1	114,000	114,000
Wisconsin	17,500	225.1	3,940,000	3,840,000
US Total	38,500	179.0	6,890,000	6,785,000
2007				
Massachusetts	13,000	117.1	1,522,000	1,522,000
New Jersey	3,100	171.3	531,000	531,000
Oregon	2,700	183.3	495,000	495,000
Washington	1,700	103.5	176,000	176,000
Wisconsin	17,600	217.6	3,830,000	3,830,000
US Total	38,100	172.0	6,554,000	6,554,000
2008				
Massachusetts	13,000	176.9	2,300,000	2,300,000
New Jersey	3,100	165.2	512,000	512,000
Oregon	2,700	148.1	400,000	400,000
Washington	1,700	55.3	94,000	94,000
Wisconsin	17,700	242.9	4,300,000	4,300,000
US Total	38,200	199.1	7,606,000	7,606,000

¹ Yield is based on total production.

² Production is rounded to the nearest 1,000 barrels.

³ A barrel weighs 100 pounds.

Cranberries, 2006 - 2008 Utilization, Price, and Value

YEAR AND STATE	UTILIZATION		PRICE PER BARREL ¹	VALUE OF UTILIZED PRODUCTION
	FRESH	PROCESSED		
	-- barrels ² --		(dollars)	(1,000 dollars)
2006				
Massachusetts	155,000	1,731,000	41.30	77,871
New Jersey ³		480,000	39.20	18,816
Oregon		465,000	48.30	22,460
Washington	30,500	83,500	45.50	5,191
Wisconsin	170,000	3,670,000	40.20	154,550
US Total	355,500	6,429,500	41.10	278,888
2007				
Massachusetts	101,000	1,421,000	46.60	70,874
New Jersey ³		531,000	42.20	22,408
Oregon ³		495,000	59.60	29,502
Washington	29,000	147,000	46.00	8,089
Wisconsin	230,000	3,600,000	46.00	176,360
US Total	360,000	6,194,000	46.90	307,233
2008				
Massachusetts	129,000	2,171,000	55.90	128,551
New Jersey ³		512,000	49.70	25,446
Oregon ³		400,000	91.50	36,600
Washington	19,500	74,500	52.90	4,977
Wisconsin	200,000	4,100,000	57.80	248,530
US Total	348,500	7,257,500	58.40	444,104

¹ Weighted average of co-op and independent sales, fresh and processed. Co-op prices represent pool proceeds less returns for processing non-cranberry products, capital stock dividends, capital stock retains, and other retains.

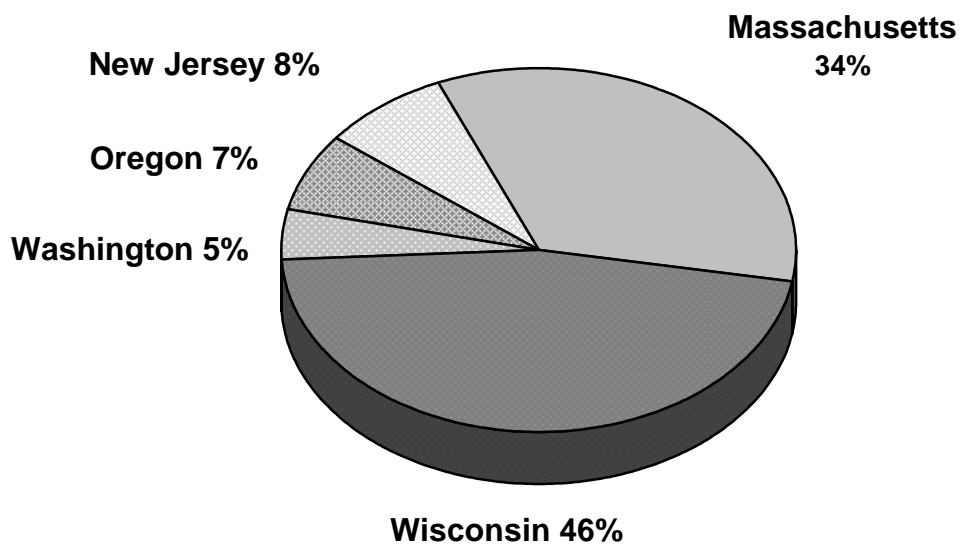
² A barrel weighs 100 pounds.

³ Small quantities of fresh cranberries are included in processed to avoid disclosure of individual operations.

Cranberry Statistics by State and U.S. Total Acres Harvested, 1999 - 2008

YEAR	MA	NJ	OR	WA	WI	US
-- acres --						
1999	15,000	4,000	2,300	1,600	15,300	38,200
2000	13,900	3,700	2,400	1,500	15,700	37,200
2001	12,000	3,100	2,400	1,600	16,500	35,600
2002	14,500	3,100	2,800	1,700	17,300	39,400
2003	14,100	3,200	2,900	1,700	17,400	39,300
2004	13,900	3,100	2,900	1,700	17,400	39,000
2005	13,700	3,100	2,700	1,700	17,400	38,600
2006	13,500	3,100	2,700	1,700	17,500	38,500
2007	13,000	3,100	2,700	1,700	17,600	38,100
2008	13,000	3,100	2,700	1,700	17,700	38,200

2008 Area Harvested Percentage by State



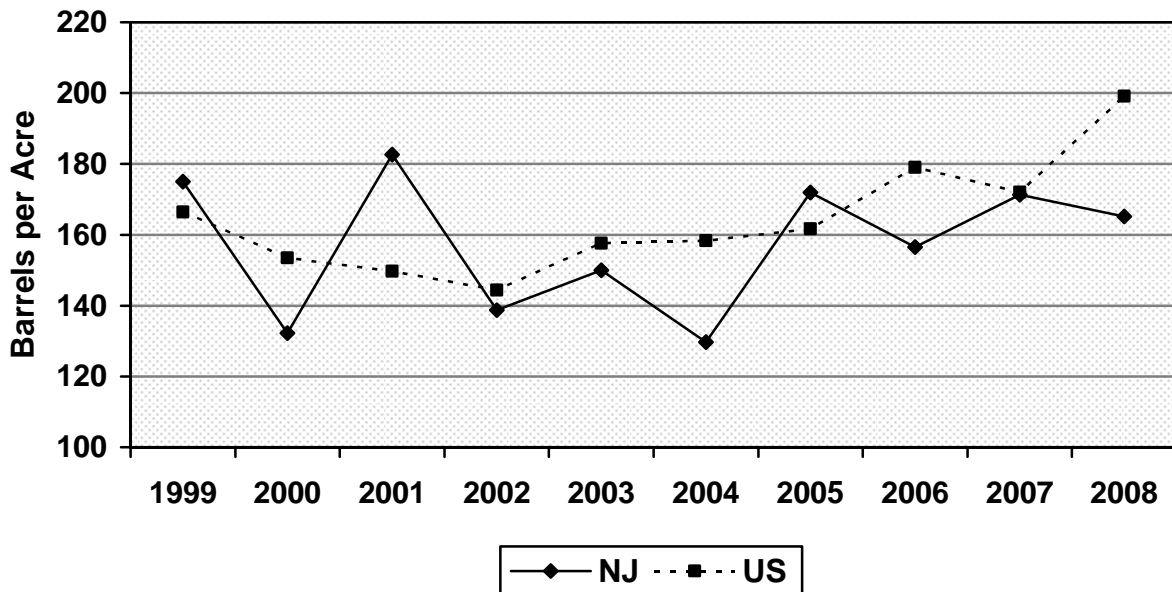
Cranberry Statistics by State and U.S. Yield Per Acre, 1999 - 2008 ¹

YEAR	MA	NJ	OR	WA	WI	US
	-- barrels per acre ² --					
1999	125.0	175.0	142.6	91.9	216.1	166.4
2000	140.5	132.2	165.8	120.0	171.5	153.5
2001	118.0	182.6	152.1	88.8	172.1	149.7
2002	100.1	138.7	154.3	98.2	185.4	144.4
2003	99.7	150.0	175.9	111.8	207.3	157.6
2004	130.1	129.7	170.7	100.0	189.7	158.3
2005	103.9	171.9	163.0	110.0	210.3	161.7
2006	139.7	156.5	172.2	67.1	225.1	179.0
2007	117.1	171.3	183.3	103.5	217.6	172.0
2008	176.9	165.2	148.1	55.3	242.9	199.1

¹ Yield is based on total production divided by harvested acres.

² A barrel weighs 100 pounds.

U.S. and New Jersey Cranberry Yield 1999 - 2008

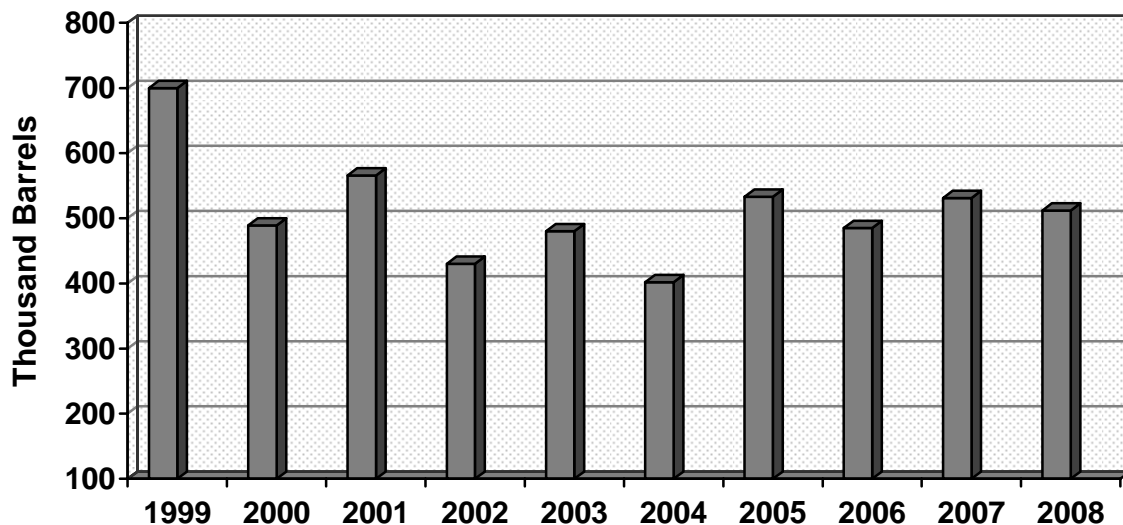


Cranberry Statistics by State and U.S. Total Production, 1999 – 2008

YEAR	MA	NJ	OR	WA	WI	US
-- barrels ¹ --						
1999	1,875,000	700,000	328,000	147,000	3,307,000	6,357,000
2000	1,953,000	489,000	398,000	180,000	2,692,000	5,712,000
2001	1,416,000	566,000	365,000	142,000	2,840,000	5,329,000
2002	1,452,000	430,000	432,000	167,000	3,208,000	5,689,000
2003	1,406,000	480,000	510,000	190,000	3,607,000	6,193,000
2004	1,808,000	402,000	495,000	170,000	3,300,000	6,175,000
2005	1,423,000	533,000	440,000	187,000	3,660,000	6,243,000
2006	1,886,000	485,000	465,000	114,000	3,940,000	6,890,000
2007	1,522,000	531,000	495,000	176,000	3,830,000	6,554,000
2008	2,300,000	512,000	400,000	94,000	4,300,000	7,606,000

¹ A barrel weighs 100 pounds.

New Jersey Total Cranberry Production 1999 - 2008



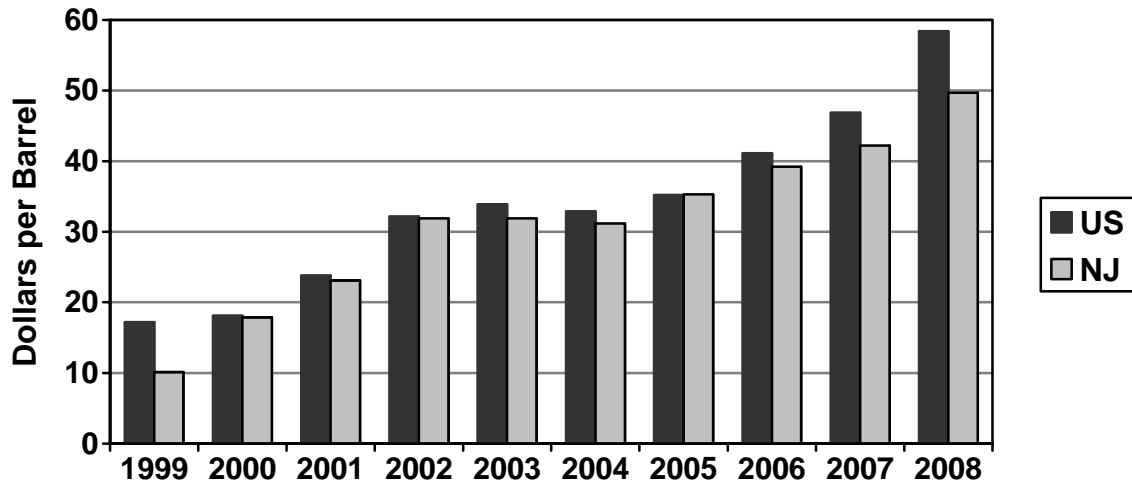
Cranberry Statistics by State and U.S. Price Per Barrel, 1999 - 2008 ^{1, 2}

YEAR	MA	NJ	OR	WA	WI	US
-- dollars --						
1999	16.20	10.10	11.50	11.80	20.00	17.20
2000	19.00	17.90	16.70	22.30	17.40	18.10
2001	24.00	23.10	22.50	28.20	23.70	23.80
2002	32.80	31.90	32.60	36.00	31.70	32.20
2003	34.10	31.90	34.10	35.20	34.00	33.90
2004	32.60	31.20	33.10	35.60	33.00	32.90
2005	35.60	35.30	34.60	37.70	35.00	35.20
2006	41.30	39.20	48.30	45.50	40.20	41.10
2007	46.60	42.20	59.60	46.00	46.00	46.90
2008	55.90	49.70	91.50	52.90	57.80	58.40

¹ Weighted average of co-op and independent sales, fresh and processed. Co-op prices represent pool proceeds less returns for processing non-cranberry products, capital stock dividends, capital stock retains, and other retains.

² A barrel weighs 100 pounds.

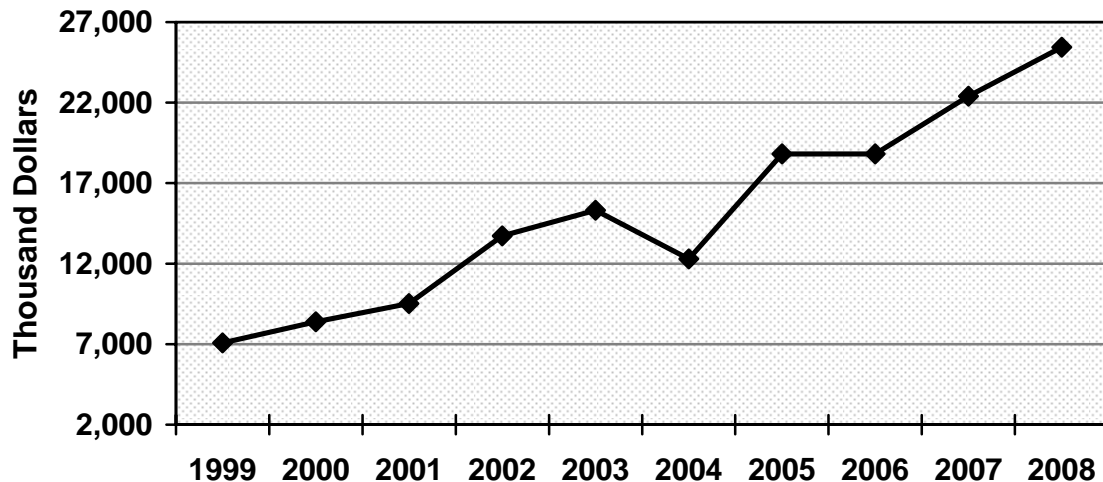
U.S. and New Jersey Price Per Barrel 1999 - 2008



Cranberry Statistics by State and U.S. Value of Utilized Production, 1999 - 2008

YEAR	MA	NJ	OR	WA	WI	US
-- 1,000 dollars --						
1999	30,375	7,070	3,772	1,737	66,118	109,072
2000	37,010	8,395	6,575	3,679	45,192	100,851
2001	33,869	9,517	7,994	3,838	58,428	113,646
2002	47,595	13,717	14,098	5,758	101,615	182,783
2003	47,982	15,312	17,386	6,691	122,463	209,834
2004	59,004	12,293	16,364	6,055	108,954	202,670
2005	50,708	18,815	15,208	7,046	128,208	219,985
2006	77,871	18,816	22,460	5,191	154,550	278,888
2007	70,874	22,408	29,502	8,089	176,360	307,233
2008	128,551	25,446	36,600	4,977	248,530	444,104

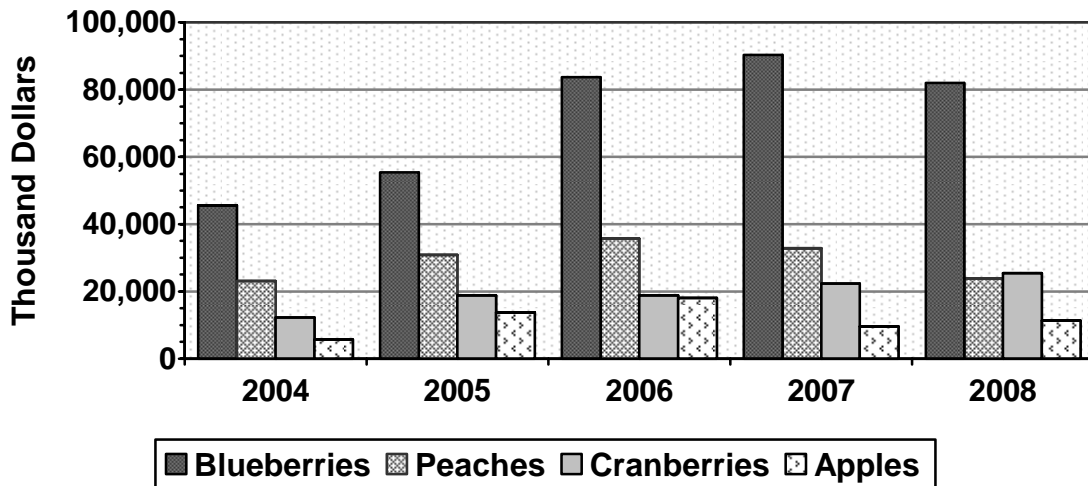
New Jersey Value of Utilized Production 1999 - 2008



New Jersey Fruit Statistics Value of Utilized Production, 1999 - 2008

YEAR	APPLES	BLUEBERRIES	CRANBERRIES	PEACHES
-- 1,000 dollars --				
1999	6,375	36,590	7,070	25,992
2000	6,183	36,100	8,395	24,774
2001	8,117	36,730	9,517	28,350
2002	5,640	46,790	13,717	25,194
2003	5,840	45,690	15,312	24,180
2004	5,740	45,630	12,293	23,180
2005	13,779	55,470	18,815	30,869
2006	18,060	83,720	18,816	35,700
2007	9,609	90,240	22,408	32,832
2008	11,310	81,990	25,446	23,920

New Jersey Fruit Statistics Value of Utilized Production 2004 - 2008



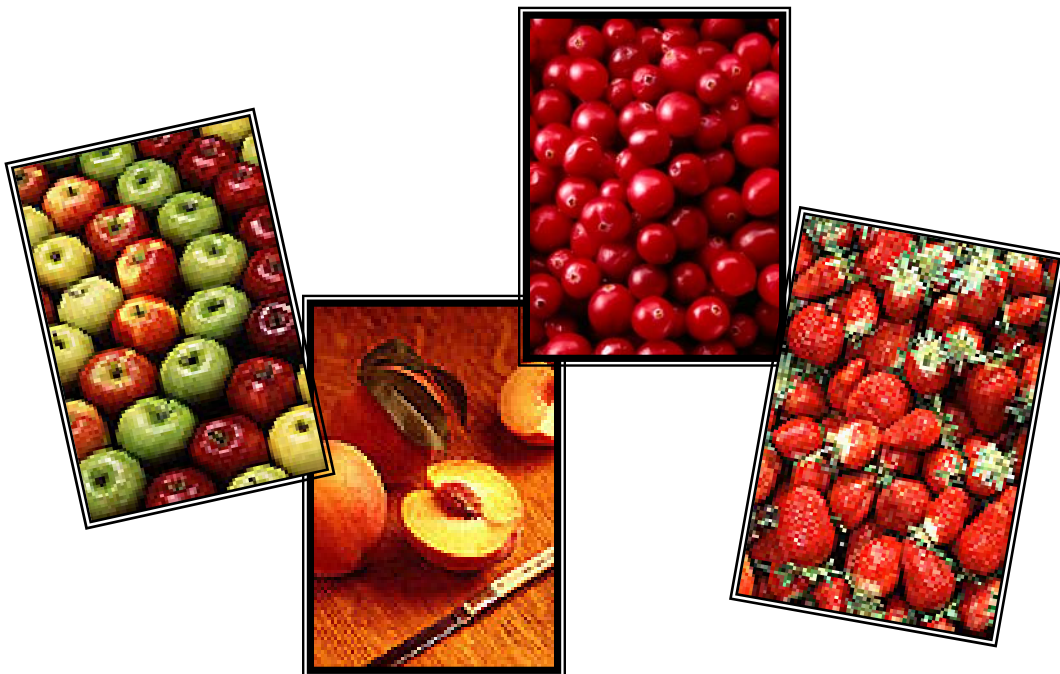
U.S. Noncitrus Fresh Fruit Per Capita Consumption, 1998 – 2007¹

YEAR	US TOTAL POPULATION JULY 1 ²	APPLES	CRANBERRIES	PEACHES AND NECTARINES	STRAWBERRIES
	(1,000)	-- pounds --			
1998	276,115	18.98	0.08	4.69	3.92
1999	279,295	18.50	0.11	5.29	4.57
2000	282,407	17.45	0.14	5.30	4.86
2001	285,339	15.59	0.13	5.16	4.21
2002	288,189	15.98	0.11	5.22	4.65
2003	290,941	16.90	0.10	5.16	5.28
2004	293,609	18.82	0.11	5.13	5.47
2005	296,329	16.72	0.09	4.82	5.82
2006	299,157	17.83	0.09	4.58	6.13
2007³	302,045	16.43	0.10	4.47	6.44

¹ Source: Economic Research Service, USDA: Fruit and Tree Nuts Situation and Outlook Yearbook/ FTS-2008/ October 2008.

² U. S. Residents plus the Armed Forces overseas. Source: U.S. Census Bureau.

³ Preliminary



N.J. Historic Cranberry Statistics 1900 – 1930

Year	Area Harvested	Yield Per Acre	Utilized Production	Price	Value of Utilized Production
	--acres--	--bbls--	--bbls--	--\$/bbls--	--\$--
1900	9,000	11.1	100,000	7.00	700,000
1901	9,100	12.1	110,000	6.10	671,000
1902	9,200	3.6	33,300	6.80	224,000
1903	9,300	18.8	175,000	6.60	1,150,000
1904	9,400	8.8	83,000	5.60	465,000
1905	9,500	9.3	88,000	8.00	704,000
1906	9,600	10.7	103,000	6.80	700,000
1907	9,700	12.5	121,000	6.80	823,000
1908	9,800	7.7	75,000	8.00	600,000
1909	10,000	16.9	169,000	5.90	997,000
1910	10,200	23.6	241,000	6.20	1,494,000
1911	10,300	14.1	145,000	7.60	1,102,000
1912	10,400	10.9	113,000	7.10	802,000
1913	10,500	9.6	101,000	7.50	758,000
1914	10,600	15.1	160,000	4.10	656,000
1915	10,700	17.2	184,000	6.80	1,251,000
1916	10,800	15.6	169,000	6.80	1,149,000
1917	10,900	11.8	129,000	10.80	1,393,000
1918	11,000	11.5	127,000	8.70	1,105,000
1919	11,200	13.8	155,000	7.90	1,224,000
1920	11,200	11.6	130,000	10.70	1,391,000
1921	11,200	14.7	165,000	14.10	2,326,000
1922	11,100	18.5	205,000	10.50	2,152,000
1923	11,000	18.2	200,000	8.10	1,620,000
1924	11,000	19.5	215,000	10.00	2,150,000
1925	10,900	10.6	115,000	12.40	1,426,000
1926	10,900	19.7	215,000	7.00	1,505,000
1927	10,900	6.9	75,000	14.10	1,058,000
1928	10,900	12.7	138,000	14.40	1,987,000
1929	10,800	8.3	90,000	13.80	1,242,000
1930	10,800	13.5	146,000	10.50	1,533,000

N.J. Historic Cranberry Statistics 1931 – 1960

Year	Area Harvested	Yield Per Acre	Utilized Production	Price	Value of Utilized Production
	--acres--	--bbls--	--bbls--	--\$/bbls--	--\$--
1931	10,700	12.3	132,000	6.60	871,000
1932	10,700	7.5	80,000	8.20	656,000
1933	10,400	13.7	142,000	6.70	951,000
1934	10,100	7.1	72,000	12.80	922,000
1935	9,800	8.7	85,000	13.60	1,156,000
1936	9,500	7.9	75,000	14.30	1,072,000
1937	9,200	19.0	175,000	9.80	1,715,000
1938	8,800	7.0	62,000	10.70	663,000
1939	8,500	10.4	88,000	8.70	766,000
1940	8,200	11.0	90,000	11.00	990,000
1941	8,000	10.0	80,000	11.00	880,000
1942	7,800	12.2	95,000	13.30	1,264,000
1943	7,700	8.1	62,000	16.20	1,004,000
1944	7,600	7.8	59,000	24.20	1,428,000
1945	7,600	6.4	49,000	19.40	951,000
1946	7,700	13.1	101,000	32.20	3,252,000
1947	7,800	10.5	82,000	16.90	1,386,000
1948	7,800	8.8	69,000	10.20	704,000
1949	7,500	8.9	67,000	6.10	409,000
1950	7,000	14.7	103,000	7.20	742,000
1951	6,500	11.7	76,000	12.40	942,000
1952	5,800	17.9	104,000	16.70	1,737,000
1953	5,000	22.4	112,000	12.80	1,434,000
1954	4,200	20.7	87,000	11.00	957,000
1955	3,600	25.0	90,000	8.50	765,000
1956	3,000	24.3	73,000	9.20	672,000
1957	2,800	27.9	78,000	11.40	889,000
1958	2,500	35.6	89,000	11.80	1,050,000
1959	2,800	33.6	90,000	9.00	846,000
1960	2,700	31.9	86,000	9.00	774,000

N.J. Historic Cranberry Statistics 1961 – 1990

Year	Area Harvested	Yield Per Acre	Utilized Production	Price	Value of Utilized Production
	--acres--	--bbls--	--bbls--	--\$/bbls--	--\$--
1961	3,000	39.3	118,000	8.70	1,027,000
1962	3,000	34.3	102,000	9.90	1,020,000
1963	2,600	25.3	65,800	12.20	803,000
1964	3,100	49.4	153,000	14.50	2,219,000
1965	3,000	51.0	153,000	15.70	2,402,000
1966	3,000	45.0	135,000	15.20	2,052,000
1967	3,200	49.1	157,000	14.80	2,324,000
1968	3,300	47.0	155,000	15.20	2,356,000
1969	3,000	53.3	160,000	15.50	2,480,000
1970	3,100	57.7	179,000	10.80	1,933,000
1971	3,100	76.5	175,000	14.60	2,599,000
1972	3,000	19.6	192,000	12.60	2,470,000
1973	3,200	71.3	228,000	13.70	3,124,000
1974	3,200	78.1	250,000	10.60	2,650,000
1975	3,100	71.3	221,000	13.30	2,939,000
1976	3,100	89.0	276,000	13.50	3,726,000
1977	3,000	52.3	157,000	18.80	2,952,000
1978	3,000	74.3	223,000	21.70	4,839,000
1979	3,000	84.3	253,000	26.90	6,806,000
1980	2,900	84.5	245,000	33.20	8,134,000
1981	2,900	78.6	228,000	41.60	9,485,000
1982	3,000	98.3	295,000	40.00	11,800,000
1983	3,100	75.2	233,000	44.60	10,392,000
1984	3,200	85.6	274,000	47.00	12,878,000
1985	3,300	97.0	320,000	46.90	15,008,000
1986	3,300	98.5	325,000	45.40	14,755,000
1987	3,200	87.5	280,000	45.10	12,628,000
1988	3,300	112.1	370,000	45.10	16,687,000
1989	3,200	91.3	292,000	41.00	11,972,000
1990	3,200	100.9	323,000	45.00	14,535,000

N.J. Historic Cranberry Statistics 1991 – 2008 - Continued

Year	Area Harvested	Yield Per Acre	Utilized Production	Price	Value of Utilized Production
	--acres--	--bbls--	--bbls--	--\$/bbls--	--\$--
1991	3,200	102.2	327,000	47.70	15,598,000
1992	3,300	144.8	478,000	48.80	23,326,000
1993	3,400	113.5	386,000	47.20	18,219,000
1994	3,300	169.1	558,000	46.60	26,003,000
1995	3,500	129.7	454,000	50.00	22,700,000
1996	3,600	129.7	467,000	61.80	28,861,000
1997	3,900	149.2	582,000	56.60	32,941,000
1998	3,900	133.6	521,000	26.30	13,702,000
1999	4,000	175.0	700,000	10.10	7,070,000
2000	3,700	132.2	469,000	17.90	8,395,000
2001	3,100	182.6	412,000	23.10	9,517,000
2002	3,100	138.7	430,000	31.90	13,717,000
2003	3,200	150.0	480,000	31.90	15,312,000
2004	3,100	129.7	394,000	31.20	12,293,000
2005	3,100	171.9	533,000	35.30	18,815,000
2006	3,100	156.5	480,000	39.20	18,816,000
2007	3,100	171.3	531,000	42.40	22,408,000
2008	3,100	165.2	512,000	49.70	25,446,000

New Jersey: Fruits and Berries, Usual Full Bloom and Harvesting Dates

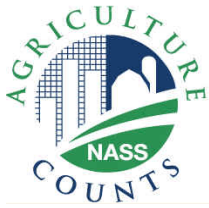
Crop	Apr	May	June	July	Aug	Sept	Oct	Nov
Apples								
Blueberries								
Cranberries								
Grapes								
Peaches								
Strawberries								



2009 Survey Dates	
Cranberry - Forecast Survey	July 2009
Release	August 2009
Cranberry - Final Production, Disposition and Prices Received Survey	November 2009
Release	January 2010

We ensure the confidentiality of all individual reports. No person (outside of Agricultural Statistics Service personnel), organization, or other local, state, or federal government agency has access to any report an individual submits to us. Individual reports are used only in combination with other reports and are summarized to develop county, state, and federal cranberry production estimates.

The publication and dissemination of agricultural statistics are possible only through the support and cooperation of the agricultural industry. The New Jersey Agricultural Statistics Service would like to thank those who responded and furnished information for the cranberry estimation program.



Who We Are...

The mission of **USDA's National Agricultural Statistics Service (NASS)** is to provide timely, accurate, and useful statistics in service to United States agriculture. All 46 field offices are operated under cooperative funding arrangements with State Departments of Agriculture and/or land-grant universities. Statistics are based on data collected from growers and agri-businesses through annual, quarterly, monthly, and weekly surveys and the Census of Agriculture.

Nationwide: About 400 national reports are issued annually covering about 120 crop and 45 livestock items in the major-producing states along with economic and demographic information. Each report is published according to a pre-set calendar of release dates. Strict security ensures that no one gains premature access to the information. The Census of Agriculture is conducted every five years to generate statistics for ALL agricultural commodities at the county, state, and national levels. The five-year program also includes special studies like the Census of Horticulture and Aquaculture. Census products and services are available from all field offices.

New Jersey: The New Jersey field office issues about 65 reports annually such as the *New Jersey Farm Facts*, *Weekly Crop Weather Report*, *Jersey Fresh Fruit and Vegetable Crops*, and an annual summary with historical comparisons and county statistics for our major commodities.