

New Jersey 2009

fresh market
Sweet Corn



New Jersey 2009

fresh market

Sweet Corn

The production of fresh market sweet corn generated \$22.8 million in value in 2009. It was ranked third among all principal fresh market vegetables in terms of total fresh market value of production. Sweet corn value of production contributed 13 percent to the total value of principal fresh market vegetable crop in New Jersey in 2009. The season average price, at \$29.20 per cwt., was \$0.10 higher than the previous year. In 2009, fresh market sweet corn harvested acres, at 7,100 acres, continued to be the largest vegetable crop in New Jersey. This was unchanged from 2008. The harvested acreage remained 22 percent of the total principal fresh market acreage in the state. In 2009, the yield per acre, 110 cwt., was 35 cwt. above the 2008 level.

New Jersey sweet corn production and value of production were ranked tenth and ninth in the nation, respectively. New Jersey contributed nearly 3 percent of the total production and total value of production for fresh market sweet corn in the United States. Florida was the largest producer in the nation, at 6.7 million cwt. Florida, also, had the largest value of production, at \$227 million, which was 27 percent of the total U.S. value of production.

The New Jersey estimating program for fresh market sweet corn started in 1935 for production and in 1939 for acreage and price. The largest number of fresh market sweet corn acres ever harvested was in 1939, when 23,000 acres were harvested. The smallest number was in 2006 when only 7,000 acres were harvested. The lowest yield ever recorded was in 1944 when the yield was 32 cwt. per acre. The highest yield was recorded in 2006 and 2009 at 110 cwt. per acre. The lowest season average price, at \$1.20 per cwt., was recorded in 1939. In 2009, the highest season average price of \$29.20 was recorded.

In New Jersey, acreage contracted for processing use has been excluded from the fresh market estimates acres. Total sweet corn processing acreage, yield, production, and price are not published separately, but combined with all processing vegetables grown in the state.



Troy M. Joshua, Director

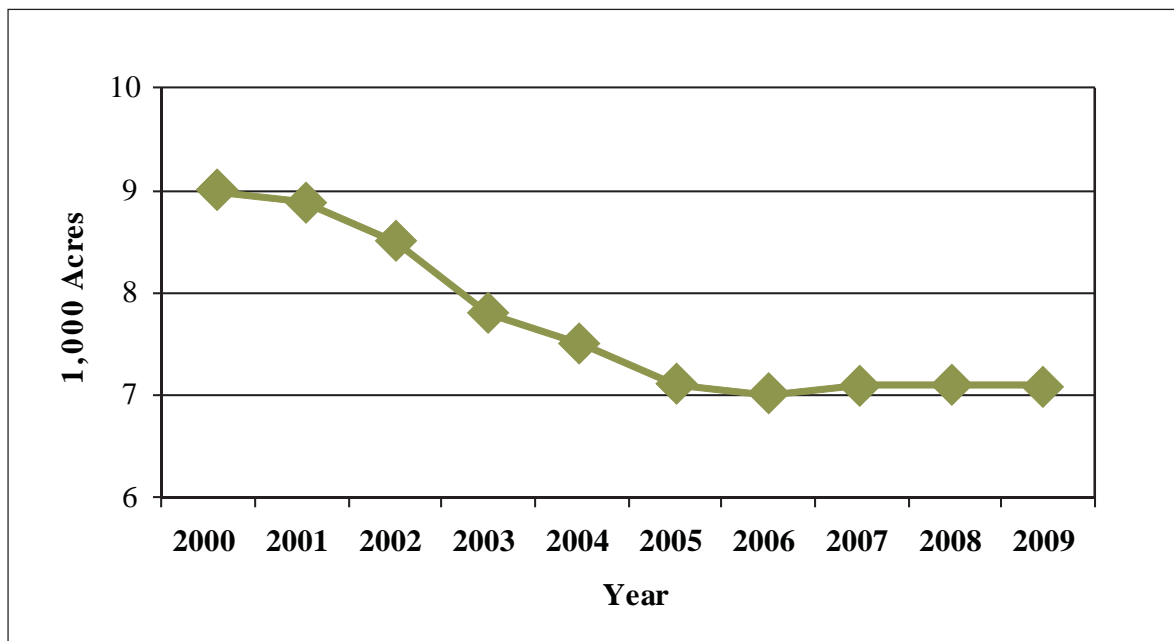
Fresh Market Sweet Corn Total Area Harvested

In New Jersey, total harvested acres were unchanged from last year. The record book for harvested fresh market sweet corn statistics started in 1939 with 23,000 acres. The peak year, during the last 10 years, was in 2000 with 9,000 acres harvested. In 2009, total harvested acres, at 7,100, accounted for 3 percent of the US total. New Jersey is the ninth largest state, along with Illinois, in terms of harvested acres of fresh market sweet corn in the nation.

Fresh Market Sweet Corn Total Area Harvested Tri-State Area and United States, 2000 – 2009

Year	NJ	NY	PA	US
		acres		
2000	9,000	27,500	18,900	239,200
2001	8,900	33,400	17,100	244,930
2002	8,500	29,800	17,400	245,730
2003	7,800	29,000	15,300	236,600
2004	7,500	23,100	15,600	234,000
2005	7,100	23,200	15,500	230,600
2006	7,000	21,900	15,300	218,300
2007	7,100	22,500	14,900	234,000
2008	7,100	22,900	14,900	233,280
2009	7,100	21,500	14,400	233,550

Fresh Market Sweet Corn Total Area Harvested New Jersey, 2000 – 2009



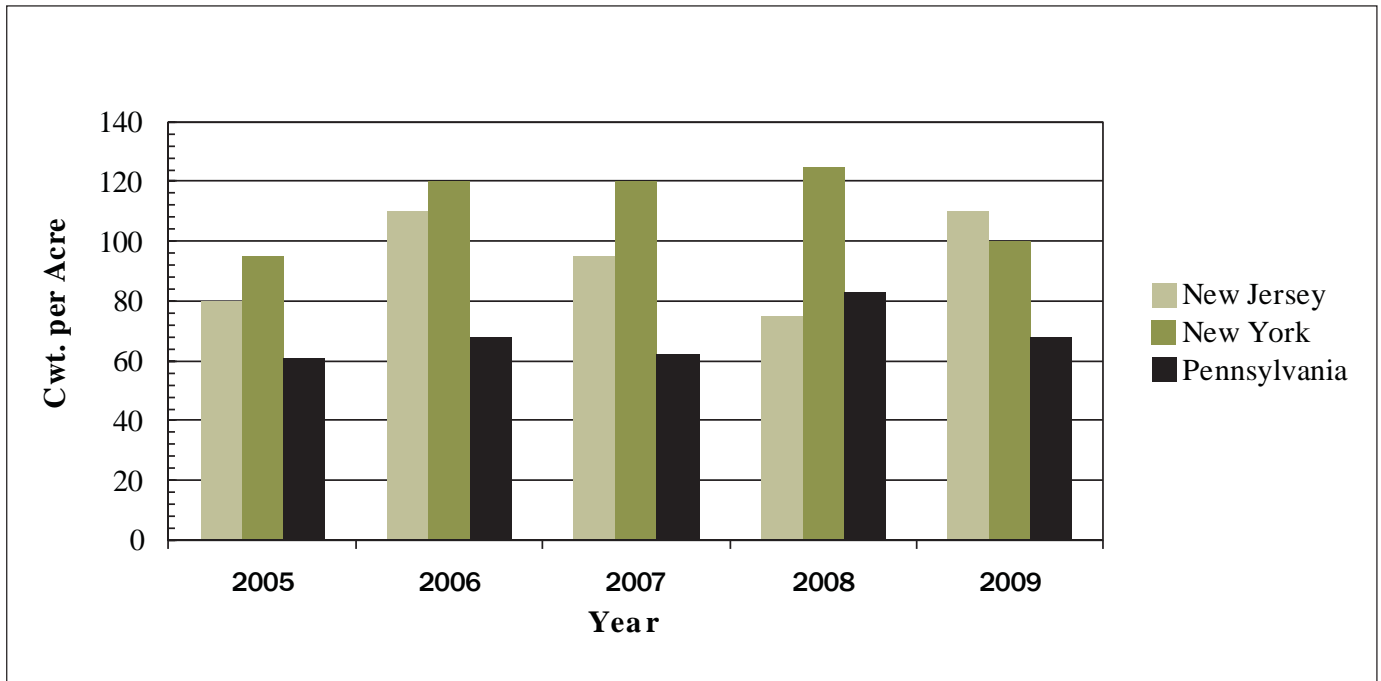
Fresh Market Sweet Corn Yield

In 2009, New Jersey's fresh market sweet corn yield, 110 hundredweight per acre, was 35 hundredweight per acre above the previous year. Since 2000, this is the first year New Jersey's yield was higher than New York's yield.

Fresh Market Sweet Corn Yield Tri-State Area and United States, 2000 - 2009

Year	NJ	NY	PA	US
	cwt per acre			
2000	105	95	51	109
2001	100	115	41	109
2002	93	110	40	108
2003	65	115	62	116
2004	70	100	71	116
2005	80	95	61	115
2006	110	120	68	118
2007	95	120	62	122
2008	75	125	83	124
2009	110	100	68	122

Fresh Market Sweet Corn Yield Tri-State Area, 2005 - 2009



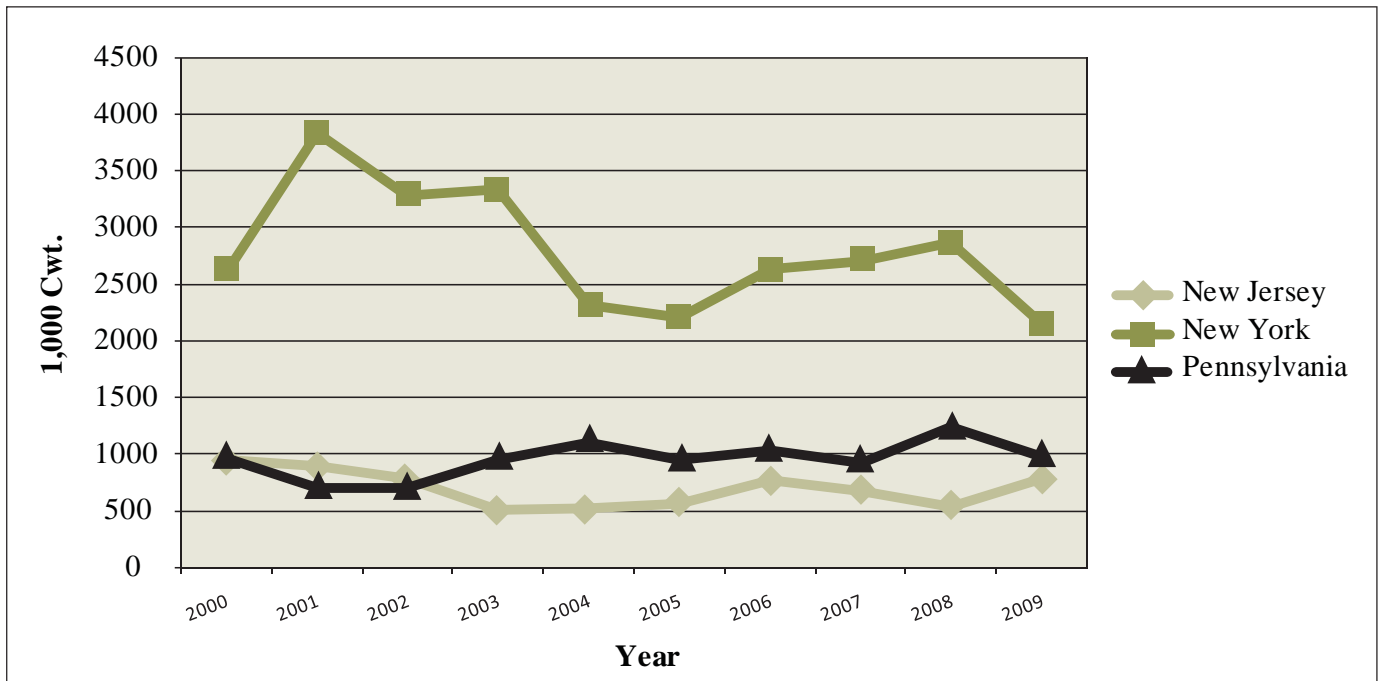
Fresh Market Sweet Corn Total Production

New Jersey's final total production for 2009 was 781 thousand hundredweight, 248 thousand hundredweight more than 2008. In 2009, total production decreased in New York, Pennsylvania and the United States, while New Jersey's total production increased. The main reason for the rise in total production was due to the significant increase in yield.

Fresh Market Sweet Corn Total Production Tri-State Area and United States, 2000 - 2009

Year	NJ	NY	PA	US
	1,000 cwt			
2000	945	2,613	964	26,027
2001	890	3,841	701	26,815
2002	791	3,278	696	26,480
2003	507	3,335	949	27,492
2004	525	2,310	1,108	27,126
2005	568	2,204	946	26,416
2006	770	2,628	1,040	25,745
2007	675	2,700	924	28,504
2008	533	2,863	1,237	28,899
2009	781	2,150	979	28,421

Fresh Market Sweet Corn Total Production Tri-State Area, 2000 - 2009



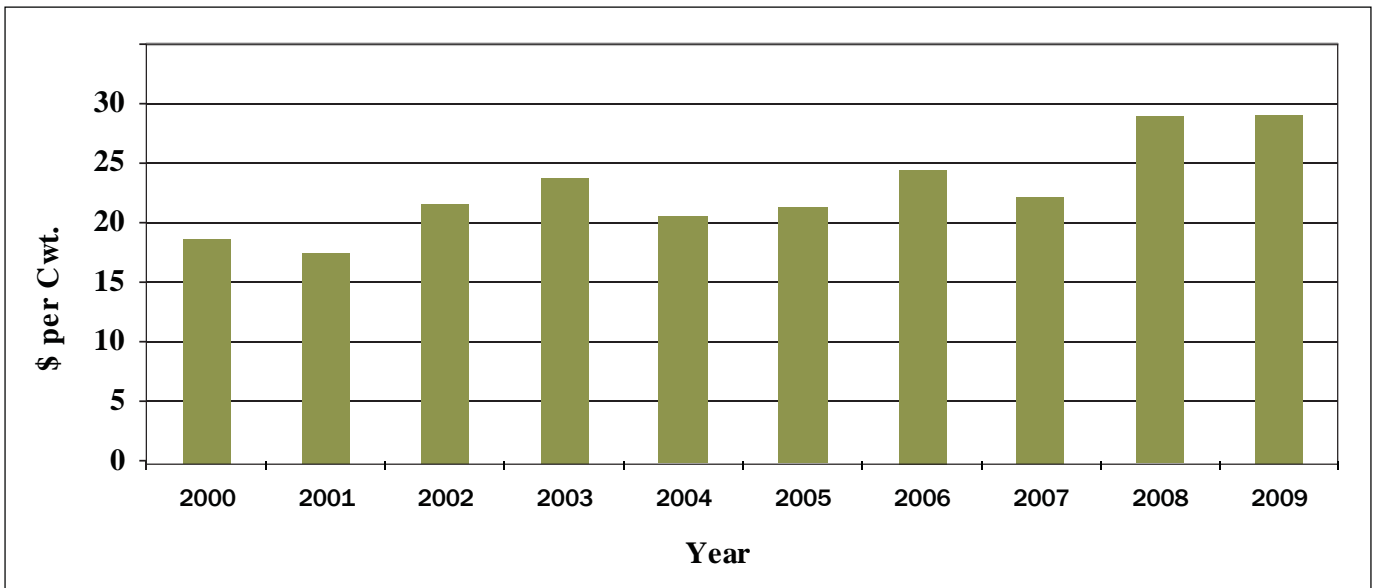
Fresh Market Sweet Corn Season Average Price

The 2009 season average price for fresh market sweet corn, at \$29.20 per hundredweight, was \$0.10 more than the price in 2008. New Jersey's price was more in 2009 than New York, but lower than the Pennsylvania and U.S. price.

Fresh Market Sweet Corn Season Average Price Tri-State Area and United States, 2000 - 2009

Year	NJ	NY	PA	US
dollars per cwt				
2000	18.90	21.60	23.40	18.50
2001	17.60	17.80	26.50	19.50
2002	21.80	23.90	31.80	19.20
2003	23.90	20.60	24.90	19.20
2004	20.80	21.40	22.10	19.20
2005	21.50	22.60	29.40	22.10
2006	24.70	23.50	35.20	23.00
2007	22.30	22.00	32.60	22.70
2008	29.10	25.80	35.40	25.90
2009	29.20	27.10	36.30	29.40

Fresh Market Sweet Corn Season Average Price New Jersey, 2000 - 2009



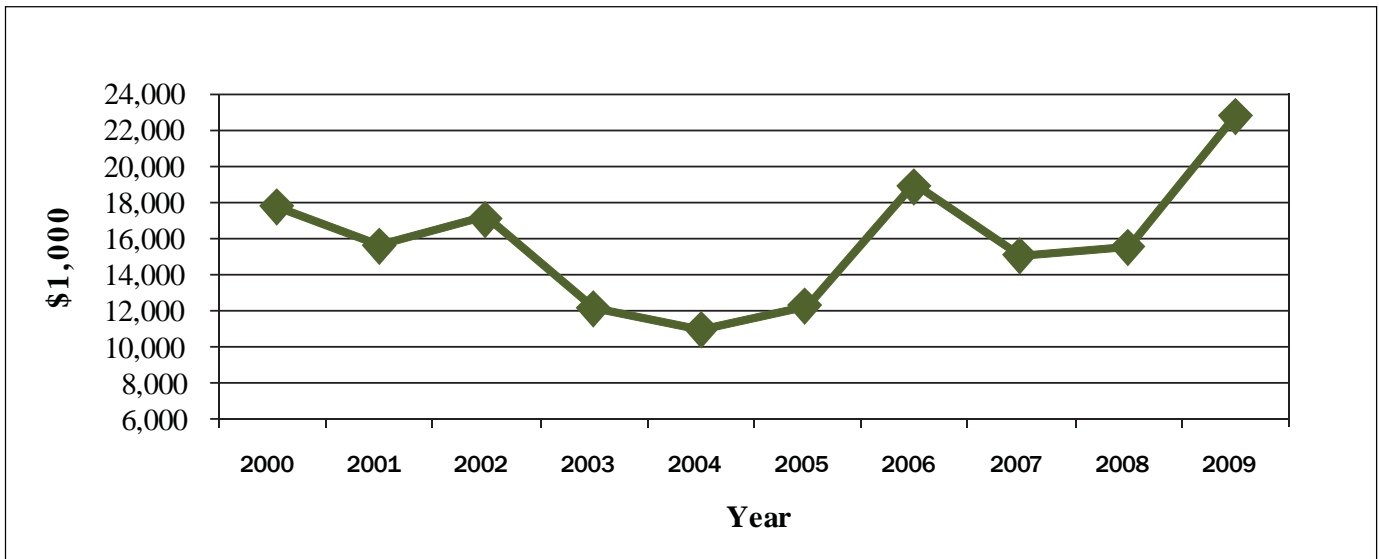
Fresh Market Sweet Corn Total Value of Production

In New Jersey, the total value of production increased to \$22.8 million in 2009 from \$15.5 million in 2008. Value of production in New Jersey and the U.S. increased, however both New York, and Pennsylvania, decreased in 2009.

Fresh Market Sweet Corn Total Value of Production Tri-State Area and United States, 2000 - 2009

Year	NJ	NY	PA	US
		\$1,000		
2000	17,861	56,441	22,558	481,016
2001	15,664	68,370	18,577	523,567
2002	17,244	78,344	22,133	509,421
2003	12,117	68,701	23,630	528,858
2004	10,920	49,434	24,487	521,358
2005	12,212	49,810	27,812	582,529
2006	19,019	61,758	36,608	590,859
2007	15,053	59,400	30,122	646,374
2008	15,510	73,865	43,790	748,632
2009	22,805	58,265	35,538	835,833

Fresh Market Sweet Corn Total Value of Production New Jersey, 2000 - 2009



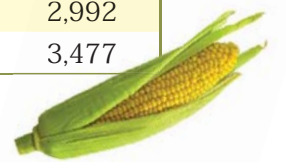
Fresh Market Sweet Corn Ranked By Total Production, 2009

State	Area Harvested	Yield Per Acre	Production	Rank
	acres	cwt	1,000 cwt	
Florida	43,100	155	6,681	1st
California	24,900	180	4,482	2nd
Georgia	25,000	130	3,250	3rd
Washington	11,500	188	2,162	4th
New York	21,500	100	2,150	5th
Ohio	11,400	119	1,357	6th
Colorado	6,800	160	1,088	7th
Michigan	9,100	110	1,001	8th
Pennsylvania	14,400	68	979	9th
New Jersey	7,100	110	781	10th
North Carolina	6,300	110	693	11th
Wisconsin	7,000	86	602	12th
Illinois	7,100	82	582	13th
Indiana	6,100	69	421	14th
Delaware	3,500	120	420	15th
Oregon	4,900	70	343	16th
Massachusetts	4,700	65	306	17th
Connecticut	3,900	70	273	18th
Maryland	3,900	67	261	19th
Texas	2,400	65	156	20th
Virginia	2,900	35	102	21th
Maine	1,500	60	90	22th
New Hampshire	1,400	55	77	23th
Alabama	1,400	53	74	24th
Vermont	1,000	45	45	25th
Rhode Island	750	60	45	26th
United States	233,550	122	23,421	-



New Jersey Fresh Market Sweet Corn Historic Statistics 1939 -1969

Year	Area Harvested	Yield Per Acre	Production	Price	Value of Production
	acres	cwt	1,000 cwt	\$/cwt	\$1,000
1939	23,000	38	862	1.20	1,035
1940	22,000	40	880	1.80	1,584
1941	21,000	45	945	1.80	1,701
1942	21,000	42	892	2.00	1,785
1943	20,000	38	750	3.30	2,475
1944	21,000	32	682	3.10	2,116
1945	21,000	42	892	4.90	4,373
1946	21,000	40	840	3.80	3,192
1947	22,000	38	825	2.90	2,392
1948	19,000	45	855	4.50	3,848
1949	20,000	35	700	3.00	2,100
1950	19,000	42	798	3.30	2,468
1951	19,000	45	855	3.20	2,608
1952	18,000	42	756	4.60	3,478
1953	16,000	50	800	4.70	3,760
1954	15,800	55	869	4.90	4,258
1955	16,600	40	664	2.70	1,793
1956	15,000	65	975	4.65	4,534
1957	14,500	60	870	5.30	4,611
1958	15,000	65	975	4.00	3,900
1959	14,000	80	1,120	3.65	4,088
1960	13,500	70	945	4.75	4,489
1961	13,500	75	1,012	4.25	4,301
1962	14,000	75	1,050	3.10	3,255
1963	14,500	70	1,015	3.40	3,451
1964	14,000	65	910	3.85	3,504
1965	14,000	80	1,120	3.10	3,472
1966	12,300	65	800	5.10	4,080
1967	11,400	75	855	3.50	2,992
1968	11,300	75	848	4.10	3,477



New Jersey Fresh Market Sweet Corn Historic Statistics 1969 -1998

Year	Area Harvested	Yield Per Acre	Production	Price	Value of Production
	acres	cwt	1,000 cwt	\$/cwt	\$1,000
1969	11,500	75	863	3.66	3,159
1970	11,200	80	896	4.40	3,942
1971	11,100	70	777	5.32	4,134
1972	11,000	65	715	6.83	4,883
1973	10,800	70	756	6.91	5,224
1974	10,600	73	774	8.73	6,757
1975	10,900	70	763	7.69	5,867
1976	11,100	70	777	9.63	7,483
1977	11,100	70	777	7.57	5,882
1978	11,400	70	798	8.54	6,815
1979	11,000	70	770	10.30	7,931
1980	10,500	73	767	12.10	9,281
1981	11,500	78	897	12.40	11,123
1982	12,500	74	925	12.30	11,378
1983	12,000	70	840	13.40	11,256
1984	12,500	80	1,000	11.30	11,300
1985	12,800	85	1,088	10.30	11,206
1986	12,200	80	976	14.40	14,054
1987	11,300	80	904	13.50	12,204
1988	10,000	62	620	16.70	10,354
1989	8,600	62	533	17.80	9,487
1990	9,500	78	741	14.10	10,448
1991	9,000	84	756	15.50	11,718
1992	9,000	90	810	14.60	11,826
1993	8,800	95	836	19.00	15,884
1994	9,000	85	765	16.90	12,929
1995	10,000	68	680	16.60	11,288
1996	10,500	68	714	21.90	15,637
1997	11,500	55	633	20.10	12,723
1998	10,600	65	689	19.40	13,367



New Jersey Fresh Market Sweet Corn Historic Statistics 1999 - 2009

Year	Area Harvested	Yield Per Acre	Production	Price	Value of Production
	acres	cwt	1,000 cwt	\$/cwt	\$1,000
1999	8,000	55	440	15.00	6,600
2000	9,000	105	945	18.90	17,861
2001	8,900	100	890	17.60	15,664
2002	8,500	93	791	21.80	17,244
2003	7,800	65	507	23.90	12,117
2004	7,500	70	525	20.80	10,920
2005	7,100	80	568	21.50	12,212
2006	7,000	110	770	24.70	19,019
2007	7,100	95	675	22.30	15,053
2008	7,100	75	533	29.10	15,510
2009	7,100	110	781	29.20	22,805



New Jersey Fruit and Vegetable Summary, 2009

Fruit Crops	Bearing/ Harvested	Yield per Acre ¹	Total Production ²	Season Average Price	Value of Production	
					Total ³	Per Acre
	acres	lbs	1,000 lbs	\$/lb	\$1,000	\$
Apples ⁵	2,000	21,500	42,000	0.499	20,951	10,476
Blueberries ⁵	7,700	6,880	53,000	1.230	65,260	8,475
Cranberries ⁵	3,100	17,900	55,500	0.54 ⁴	29,970	9,668
Peaches ⁵	6,200	11,300	70,000	0.510	33,660	5,429
Total	19,000	11,605	220,500	0.680	\$149,841	\$7,886

¹ Yield per acre is based on total production, except for blueberries, which is based on utilized production.

² Total production is actually utilized production for fruit crops.

³ Total value of production for fruit crops is based on utilized production only.

⁴ Cranberry price is a weighted average of co-op and independent sales, fresh and processed.

Co-op prices represent pool proceeds less returns for processing non-cranberry products, capital stock retains and other retains. A barrel weighs 100 pounds.

⁵ Preliminary.

Vegetables for Fresh Market ¹	acres	cwt	1,000 cwt	\$/cwt	\$1,000	\$
Asparagus ²	1,000	37	37	97.30	3,600	3,600
Cabbage	1,600	345	552	15.90	8,777	5,486
Collards ²	800	165	132	30.90	4,079	5,099
Cucumbers	3,100	130	403	28.00	11,284	3,640
Eggplant ²	900	320	288	29.00	8,352	9,280
Escarole & Endive ²	500	185	93	35.40	3,292	6,584
Kale ²	400	120	48	34.10	1,637	4,093
Lettuce, All ^{2,3}	1,800	200	360	38.30	13,788	7,660
Peppers, Bell	3,200	290	928	33.80	31,366	9,802
Pumpkins ²	2,200	115	253	29.20	7,388	3,358
Snap Beans	2,800	27	76	67.40	5,122	1,829
Spinach	1,500	135	203	43.20	8,770	5,847
Squash, Summer ²	1,900	135	257	33.40	8,584	4,518
Squash, Winter ²	900	75	68	26.70	1,816	2,018
Sweet Corn	7,100	110	781	29.20	22,805	3,212
Tomatoes	2,900	220	638	53.20	33,942	11,704
Total	32,600	162	5,117	34.10	174,602	3,600
Vegetables for Processing ⁴	acres	tons	tons	\$/tons	\$1,000	\$
Total ^{5,6}	5,300	9.58	50,790	164.70	8,366	1,578
Total Principal	37,900	8.09	306,640	596.70	182,968	-

¹ Preliminary.

² Not in the Federal Estimating Program, state estimate only. Includes head lettuce, Romaine, and all other lettuce.

³ Not published separately to avoid disclosing individual operations.

⁴ Carrots, cucumbers for pickles, and tomatoes are not in the Federal Estimating Program.

⁵ 2008 - carrots, cucumbers for pickles, green peas, snap beans, spinach, sweet corn, and tomatoes.

⁶ 2009 - green peas, snap beans, spinach, sweet corn, and tomatoes.

New Jersey Fruit and Vegetable Summary, 2008

Fruit Crops	Bearing/ Harvested	Yield per Acre ¹	Total Production ²	Season Average Price	Value of Production	
					Total ³	Per Acre
	acres	lbs	1,000 lbs	\$/lb	\$1,000	\$
Apples ⁵	2,000	21,500	39,000	0.381	14,841	7,421
Blueberries ⁵	7,600	7,760	59,000	1.390	81,990	10,788
Cranberries ⁵	3,100	16,520	51,200	0.53 ⁴	27,136	8,754
Peaches ⁵	6,200	10,960	68,000	0.460	23,920	3,858
Total	18,900	11,492	217,200	0.681	147,887	7,825

¹ Yield per acre is based on total production, except for blueberries, which is based on utilized production.

² Total production is actually utilized production for fruit crops.

³ Total value of production for fruit crops is based on utilized production only.

⁴ Cranberry price is a weighted average of co-op and independent sales, fresh and processed. Co-op prices represent pool proceeds less returns for processing non-cranberry products, capital stock retains and other retains. A barrel weighs 100 pounds.

⁵ Preliminary.

Vegetables for Fresh Market ¹	acres	cwt	1,000 cwt	\$/cwt	\$1,000	\$
Asparagus ²	1,000	34	34	130.00	4,420	4,420
Cabbage	1,600	360	576	13.50	7,776	4,860
Collards ²	800	135	108	24.40	2,635	3,294
Cucumbers	3,100	175	543	24.10	13,086	4,221
Eggplant ²	900	290	261	27.30	7,125	7,917
Escarole & Endive ²	500	185	93	28.30	2,632	5,264
Kale ²	400	145	58	26.30	1,525	3,813
Lettuce, All ^{2,3}	1,800	195	351	21.70	7,617	4,232
Peppers, Bell	3,100	360	1,116	29.50	32,922	10,620
Pumpkins ²	2,100	105	221	23.80	5,260	2,505
Snap Beans	2,500	38	95	45.00	4,275	1,710
Spinach	1,600	175	280	37.20	10,416	6,510
Squash, Summer ²	2,000	140	280	37.40	10,472	5,236
Squash, Winter ²	1,000	80	80	25.70	2,056	2,056
Sweet Corn	7,100	75	533	29.10	15,510	2,185
Tomatoes	2,900	215	624	42.70	26,645	9,188
Total	32,400	162	5,253	29.40	154,372	4,765
Vegetables for Processing ⁴	acres	tons	tons	\$/tons	\$1,000	\$
Total^{5,6}	6,000	9.79	58,740	192.00	11,279	1,880
Total Principal	38,400	8.37	321,390	515.40	165,651	-

¹ Preliminary.

² Not in the Federal Estimating Program, state estimate only.

³ Includes head lettuce, Romaine, and all other lettuce.

⁴ Not published separately to avoid disclosing individual operations.

⁵ Carrots, cucumbers for pickles, and tomatoes are not in the Federal Estimating Program.

⁶ 2007 - carrots, cucumbers for pickles, green peas, snap beans, spinach, sweet corn, and tomatoes.
2008 - green peas, snap beans, spinach, sweet corn, and tomatoes.



Who we are

The mission of USDA's National Agricultural Statistics Service (NASS) is to provide timely, accurate, and useful statistics in service to United States agriculture. All 46 field offices are operated under cooperative funding arrangements with State Departments of Agriculture and/or land-grant universities. Statistics are based on data collected from growers and agri-businesses through annual, quarterly, monthly, and weekly surveys and the Census of Agriculture.

Nationwide: About 500 national reports are issued annually covering about 120 crop and 45 livestock items in the major-producing states along with economic and demographic information. Each report is published according to a pre-set calendar of release dates. Strict security ensures that no one gains premature access to the information. The Census of Agriculture is conducted every five years to generate statistics for ALL agricultural commodities at the county, state, and national levels. The five-year program also includes special studies like the Organic Census of Horticulture and On-Farm Renewable Energy. Census products and services are available from all field offices.

New Jersey: The New Jersey field office issues about 65 reports annually such as the New Jersey Farm Facts, Weekly Crop Weather Report, Jersey Fresh Fruit and Vegetable Crops, and an annual summary with historical comparisons and county statistics for our major commodities.

Agricultural Statistics & Other Information from NASS

National reports are the timeliest source of statistics.
However, state reports may have more local information.

Internet

NASS national & state reports and data are available on the worldwide Internet.

National Homepage: www.nass.usda.gov/

The national homepage has links to all agency products and services such as publications, graphics, historic data, state information, statistical research, Census of Agriculture, a search engine and a Published Estimates Data Base to query and download state or county historic data. There are also links to our Customer Service unit, a Kids Page, and all other federal statistics outside the National Agricultural Statistics Service.

For a monthly summary of USDA estimates, forecasts, and projections of commodities, prices, trade issues, and world crop developments, see: www.nass.usda.gov/Publications/index.asp

New Jersey Homepage: www.nass.usda.gov/nj/

The New Jersey site offers much of the same information as the national homepage but in a format designed for New Jersey customers. The reports contain the same statistics but offer more details about agriculture in the New Jersey region. There are also state-funded reports that are not available on the national website, such as the Jersey Fresh Fruit and Vegetable release. Links are also available to other sites such as the New Jersey Department of Agriculture and other NASS field offices.

E-Mail Subscriptions

Free e-mail subscriptions are available via automated mailing lists for national & state reports. You can subscribe to individual reports and they will be sent directly to your e-mail address soon after the official release time.

To Subscribe to National Reports via Internet:

National reports contain statistics from all states and are the timeliest source of data.

For more information, see: www.nass.usda.gov/Publications/index.asp

To Subscribe to National and State Reports via E-mail:

Start at the NASS home page at www.nass.usda.gov. Under the section I Want To ..., go down to Receive reports by E-mail and click on the link for National or State. For National reports, the link will take you to E-Mail Delivery of Reports, where you then click on the link Go to the subscription page and follow the instructions. For State reports, click on the State link and follow the instructions.

To Subscribe to State Reports via Internet:

State reports are distributed after national reports but they usually contain more local information. To learn more about this service, see: [www.nass.usda.gov/Publications/Subscribe to State Reports/index.asp](http://www.nass.usda.gov/Publications/Subscribe%20to%20State%20Reports/index.asp)

Printed Reports & Computer Format . . .

All NASS reports are still printed on paper. Census reports are only available while supplies last; contact the New Jersey office for a copy. NASS also offers a wide variety of data on diskettes or CD-ROM with national, state, and county statistics. Most of these products are in Lotus 1-2-3 spreadsheet format or comma separated (CSV) files. A listing of all paper reports and computer products can be found in the "Guide to Products & Services" catalog issued every December.

To order a free "Guide to Products & Services" catalog or purchase paper reports, diskettes or CD-ROMs with National, State, and County statistics, call the order desk at: 1-800-999-6779



New Jersey Agricultural Statistics Service

a field office of the National Agricultural Statistics Service
United States Department of Agriculture



Rm 205 Health and Agriculture Bldg.
P.O. Box 330
Trenton, NJ 08625

Phone: (800)328-0179
Fax: (800)625-7581
nass-nj@nass.usda.gov