

CORN: Acreage, Yield, and Production

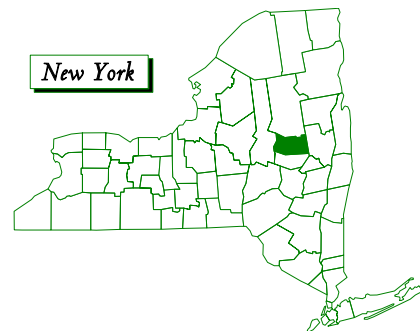
Year	All Planted	Grain			Silage		
		Harvested	Yield	Production	Harvested	Yield	Production
	<i>Acres</i>	<i>Acres</i>	<i>Bushels</i>	<i>Bushels</i>	<i>Acres</i>	<i>Tons</i>	<i>Tons</i>
1940	4,677	933	34	32,130	N/A	N/A	N/A
1950	3,579	412	41	16,985	3,057	7.9	24,173
1959	3,395	163	46	7,500	3,198	8.9	28,515
1969	3,500	300	79	23,700	N/A	N/A	N/A
1978	5,400	1,000	93	93,000	4,200	12.5	52,500
1982	4,700	1,000	75	75,000	3,600	12.4	44,600
1987	4,500	1,300	100	130,000	3,100	13.5	41,800
1992	4,400	1,400	74	103,600	2,800	13.2	37,000
1997	4,800	1,400	107	149,800	3,400	14.0	47,600
2002	3,200	800	103	82,100	2,400	12.9	31,000
2003	3,000	600	144	86,200	2,400	19.1	45,800
2004	3,000	600	126	75,700	2,400	18.1	43,500
2005	3,100	1,400	116	162,800	1,700	17.1	29,100
2006	2,400	500	116	58,000	1,900	12.5	23,700
2007	2,700	900	144	129,700	1,700	16.7	28,400
2008	N/A	N/A	N/A	N/A	N/A	N/A	N/A

1940 - 1969 U.S. Census of Agriculture

HAY: Acreage, Yield, and Production

Year	Alfalfa Hay			Other Hay			Total Hay		
	Harvested	Yield	Production	Harvested	Yield	Production	Harvested	Yield	Production
	<i>Acres</i>	<i>Tons</i>	<i>Tons</i>	<i>Acres</i>	<i>Tons</i>	<i>Tons</i>	<i>Acres</i>	<i>Tons</i>	<i>Tons</i>
1940	186	1.2	231	29,439	0.9	26,448	29,625	0.9	26,679
1950	446	1.6	717	2,110	1.3	26,694	21,546	1.3	27,411
1959	1,351	2.0	2,759	19,128	1.5	28,685	20,479	1.5	31,444
1969	N/A	N/A	N/A	N/A	N/A	N/A	13,135	1.9	24,374
1978	5,400	2.5	13,500	10,200	1.8	18,400	15,600	2.0	31,900
1982	5,300	3.0	15,900	9,400	1.6	15,000	14,700	2.1	30,900
1987	4,500	2.7	12,300	9,000	1.9	17,100	13,500	2.2	29,400
1992	3,700	2.0	7,300	4,800	1.9	9,200	8,500	1.9	16,500
1997	4,100	2.4	9,700	4,600	1.5	6,900	8,700	1.9	16,600
2002	3,700	2.0	7,300	6,000	1.8	10,800	9,700	1.9	18,100
2003	3,700	3.7	13,800	6,600	1.6	10,600	10,300	2.4	24,400
2004	2,900	2.3	6,600	4,600	1.4	6,500	7,500	1.7	13,100
2005	3,000	2.0	5,900	6,900	0.9	6,200	9,900	1.2	12,100
2006	2,100	1.7	3,600	7,100	1.2	8,400	9,200	1.3	12,000
2007	2,500	2.0	5,100	7,600	1.6	12,400	10,100	1.7	17,500
2008	2,700	3.6	9,700	7,900	1.8	14,300	10,600	2.26	24,000

1940-1969 U.S. Census of Agriculture



Fulton County

Farm Statistics

August 2009

Fulton County is located in the east central portion of the state at the base of the Adirondack Mountains. In 2008, there were 33,851 acres in farms, 11 percent of the county's total 317,100 acres. There were 222 farms in the county averaging 152 acres per farm. Fulton County ranks 50th in the state for number of farms and 50th for land in farms.

In 2007, according to the Census of Agriculture, the market value of all agricultural products sold from county farms was \$9 million. Total sales averaged \$40,919 per farm. The leading products sold were: Milk & Dairy, Cattle & Calves, Fruits & Nuts, Vegetables & Potatoes, and Grains & Dry Beans.

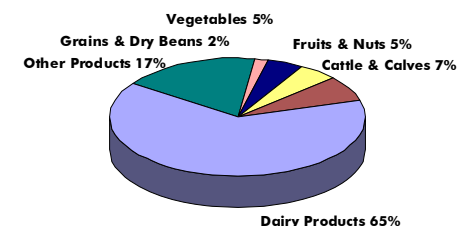
The average value of land and buildings per farm in 2007 was 331,316. Machinery and equipment were valued at \$71,071 per farm. Total production expenses in 2007 were \$7.8 million for an average of \$35,358 per farm. The Census showed 48 percent of the farm operators reported farming as their principal occupation. The average age of the operator was 55.9 years. The U.S.D.A.'s Economic Research Service showed the median household income in 2007 was \$40,259.

LEADING AGRICULTURAL PRODUCTS

Product	2007 Sales	Percent of Total	State Rank
	(\$1,000)		
Dairy Products	5,875	65	45
Cattle & Calves	619	7	48
Fruits & Nuts	448	5	32
Vegetables	411	5	49
Grains & Dry Beans	142	2	50
Other Products	1,589	17	
TOTAL SALES	9,084		52

2007 Census of Agriculture

Leading Agricultural Products Percent of Total



New York Agricultural Statistics Service
10B Airline Drive
Albany, New York 12235
www.nass.usda.gov/ny (518)457-5570

FARMS, LAND IN FARMS, AND LAND USE

Year	Number of Farms	Land in Farms	Total Cropland	Permanent Pasture	Total Woodland	Other Land
		<i>Acres</i>	<i>Acres</i>	<i>Acres</i>	<i>Acres</i>	<i>Acres</i>
1940	1,323	119,213	N/A	N/A	30,845	N/A
1950	830	92,261	48,353	13,353	25,941	4,614
1959	591	80,308	45,504	5,415	25,041	4,348
1969	271	48,725	29,405	N/A	13,249	N/A
1978	254	47,140	28,300	3,995	11,311	3,534
1982	233	44,759	26,349	2,567	11,562	4,281
1987	215	40,100	25,200	2,200	9,200	3,500
1992	215	38,900	24,800	2,500	7,800	3,800
1997	210	36,900	22,800	3,000	8,300	2,800
2002	245	37,700	22,520	2,238	9,472	3,470
2003	225	35,800	N/A	N/A	N/A	N/A
2004	220	35,300	N/A	N/A	N/A	N/A
2005	215	34,700	N/A	N/A	N/A	N/A
2006	210	34,300	N/A	N/A	N/A	N/A
2007	220	34,000	18,277	3,967	8,796	2,960
2008	220	33,500	N/A	N/A	N/A	N/A

1940 - 1982 and all land breakouts after 1999 are U.S. Census of Agriculture

CATTLE-Number on Farms Jan 1

MILK Cows & Production

Year	All Cattle & Calves	Beef Cows	Milk Cows	Year	Annual Avg Milk Cows	Avg Production Per Cow	Total Milk Production
	<i>Number on Farms</i>				<i>No Head</i>	<i>Pounds</i>	<i>Million Lbs</i>
1940	11,436	N/A	N/A	1940	N/A	N/A	N/A
1950	10,254	106	6,494	1950	N/A	N/A	N/A
1959	10,921	82	6,797	1959	N/A	N/A	N/A
1969	8,122	595	4,532	1969	N/A	N/A	N/A
1978	10,000	500	5,300	1978	5,300	10,000	53
1982	10,500	700	5,800	1982	5,800	10,600	62
1987	8,700	400	4,600	1987	4,400	13,300	59
1992	8,000	300	4,000	1992	4,300	15,200	65
1997	7,500	400	2,500	1997	2,800	15,700	44
2002	7,000	500	2,600	2002	3,300	20,000	66
2003	6,200	600	3,000	2003	3,000	20,700	62
2004	6,100	600	2,800	2004	2,900	20,500	59
2005	5,400	500	2,900	2005	2,900	21,400	62
2006	5,200	500	2,800	2006	2,300	21,700	50
2007	5,100	500	2,600	2007	2,200	21,800	48
2008	4,300	600	2,000	2008	2,300	21,700	50
2009	4,100	N/A	2,000	2009	N/A	N/A	N/A

1940-1969 U.S. Census of Agriculture

FARMS BY SALES CLASS

Sales Class	2002	2007
Under \$10,000	163	136
\$10,000 to \$49,999	41	47
\$50,000 to \$99,999	11	16
\$100,000 or more	31	23
Farms Reporting	246	222

U. S. Census of Agriculture

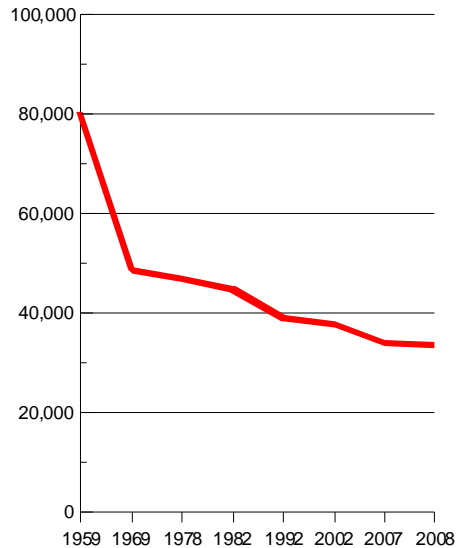
RESIDENT POPULATION

In 2008, Fulton County's population ranked 45th in the state.

Year	Total	Population Per Sq Mile
1940	48,600	98
1950	51,000	103
1960	51,300	103
1970	52,600	106
1980	55,200	111
1990	54,200	109
2000	55,077	111
2008	55,027	111

U.S. Census of Population

Land in Farms (Acres)

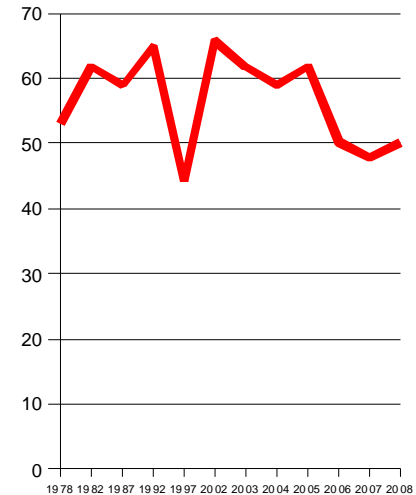


OATS-Acreage, Yield & Production

Year	Planted	Harvested	Yield	Production
	<i>Acres</i>	<i>Acres</i>	<i>Bushels</i>	<i>Bushels</i>
1940	N/A	3,903	28	107,989
1950	N/A	2,974	27	79,996
1959	N/A	2,777	43	118,278
1969	N/A	N/A	N/A	N/A
1978	1,600	900	48	43,200
1982	1,400	700	45	31,500
1987	700	400	57	22,800
1992	400	300	60	18,000
1997	300	300	53	15,900
2002	N/A	N/A	N/A	N/A
2003	N/A	N/A	N/A	N/A
2004	N/A	N/A	N/A	N/A
2005	N/A	N/A	N/A	N/A
2006	N/A	N/A	N/A	N/A
2007	N/A	N/A	N/A	N/A
2008	N/A	N/A	N/A	N/A

1940-1969 U.S. Census of Agriculture

Milk Production (Million Pounds)



EQUINE: Inventory and Value, Census of Agriculture, 2007

Year	Total Equine	Rank in State	Total Equine Sold	Value of Sales
2007	609	53	48	\$129,000