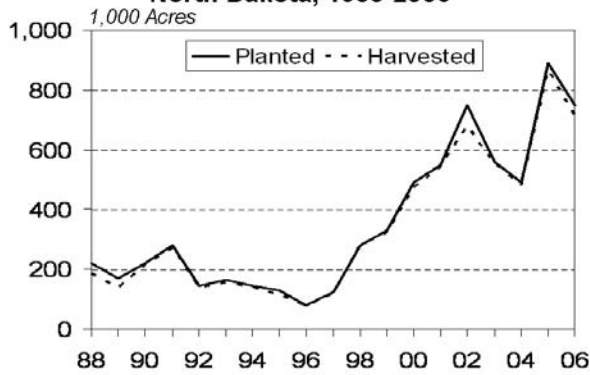
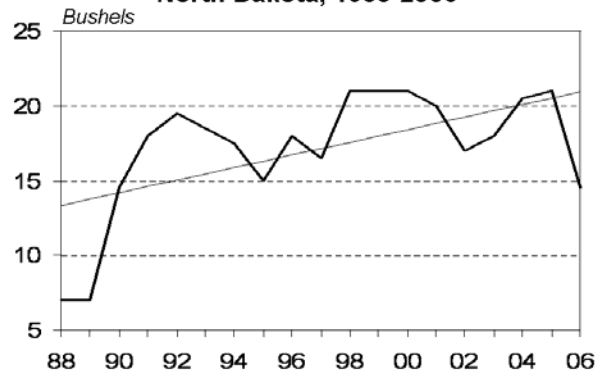


## Flaxseed

**Flaxseed: Planted and Harvested Acres  
North Dakota, 1988-2006**



**Flaxseed: Yield Per Acre  
North Dakota, 1988-2006**

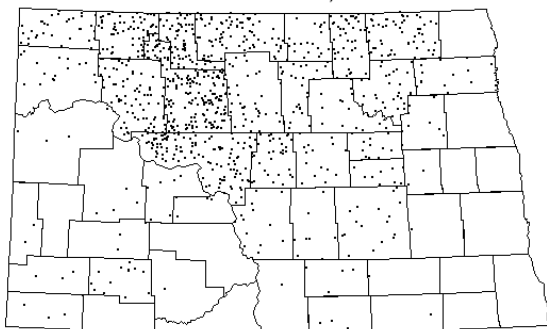


**Flaxseed: Acreage, Yield, Production, Price and Value  
North Dakota, 1997-2006**

Year	Area Planted	Area Harvested	Yield per Acre	Production	Marketing Year Avg Price <sup>1</sup>	Value of Production <sup>2</sup>	Value per Harvested Acre
	<i>1,000 Acres</i>	<i>1,000 Acres</i>	<i>Bushels</i>	<i>1,000 Bushels</i>	<i>\$/Bushel</i>	<i>\$1,000</i>	<i>Dollars</i>
1997	125	121	16.5	1,997	5.81	11,603	95.89
1998	280	277	21.0	5,817	5.05	29,376	106.05
1999	330	327	21.0	6,867	3.79	26,026	79.59
2000	490	475	21.0	9,975	3.31	33,017	69.51
2001	550	545	20.0	10,900	4.29	46,761	85.80
2002	750	680	17.0	11,560	5.77	66,701	98.09
2003	560	555	18.0	9,990	5.88	58,741	105.84
2004	490	480	20.5	9,840	8.05	79,212	165.03
2005	890	865	21.0	18,165	5.94	107,900	124.74
2006	750	715	14.5	10,368	5.85	60,653	84.83

<sup>1</sup> Preliminary 2006 marketing year average (MYA) price is based on entire month price data through December 2006. Final 2006 MYA price will be published in November 2007. <sup>2</sup> Value is computed by multiplying price by production.

**Flaxseed: Production  
North Dakota, 2006**



**1 Dot = 10,000 Bushels**  
Dots randomly placed within county.  
Blank counties represent none harvested or undisclosed data.



**Flaxseed: Area Planted and Harvested, Yield and Production  
North Dakota by County, 2006 and 2005 <sup>1</sup>**

District and County	2006				2005			
	Area Planted	Area Harvested	Yield per Acre	Production	Area Planted	Area Harvested	Yield per Acre	Production
	<i>Acres</i>	<i>Acres</i>	<i>Bushels</i>	<i>Bushels</i>	<i>Acres</i>	<i>Acres</i>	<i>Bushels</i>	<i>Bushels</i>
Burke	43,000	42,700	14.3	610,000	42,000	38,700	21.9	846,000
Divide	26,500	26,300	11.6	305,000	22,000	20,400	19.2	391,000
Mountrail	62,000	61,200	12.0	736,000	74,000	73,000	20.2	1,472,000
Renville	47,500	47,100	14.3	672,000	47,000	46,100	24.6	1,133,000
Ward	91,000	90,600	19.0	1,718,000	109,000	108,000	23.6	2,545,000
Williams	16,000	15,600	10.7	167,000	21,000	20,800	19.4	403,000
Combined Counties								
<b>Northwest</b>	286,000	283,500	14.8	4,208,000	315,000	307,000	22.1	6,790,000
Benson	11,000	10,700	15.3	164,000	16,500	16,300	19.8	322,000
Bottineau	48,000	47,100	16.3	767,000	59,000	55,700	21.3	1,187,000
McHenry	31,000	30,900	13.0	401,000	31,500	31,000	21.5	667,000
Pierce	19,000	18,500	13.1	242,000	20,000	19,500	19.5	381,000
Rolette	9,000	8,500	21.9	186,000	13,000	12,000	19.0	228,000
Combined Counties								
<b>North Central</b>	118,000	115,700	15.2	1,760,000	140,000	134,500	20.7	2,785,000
Cavalier	24,800	24,400	22.5	549,000	43,000	42,100	18.5	777,000
Grand Forks					2,100	1,900	20.5	39,000
Nelson	7,500	7,300	12.3	90,000	9,700	9,500	22.6	215,000
Pembina					2,600	1,700	17.1	29,000
Ramsey	18,000	17,500	16.6	290,000	16,500	15,600	18.7	291,000
Towner	19,900	19,800	21.5	426,000	34,500	32,800	19.5	639,000
Walsh	6,100	6,000	20.8	125,000	7,600	7,500	22.7	170,000
Combined Counties	1,700	1,700	16.5	28,000				
<b>Northeast</b>	78,000	76,700	19.7	1,508,000	116,000	111,100	19.4	2,160,000
Dunn	3,900	3,800	9.7	37,000	2,700	2,700	22.6	61,000
McKenzie	5,000	4,000	9.5	38,000	5,600	5,500	18.4	101,000
McLean	71,000	70,800	16.5	1,165,000	74,500	73,400	21.4	1,568,000
Mercer	7,500	7,100	10.3	73,000	8,600	8,400	22.1	186,000
Oliver	3,600	3,100	11.9	37,000	3,600	3,500	26.9	94,000
Combined Counties								
<b>West Central</b>	91,000	88,800	15.2	1,350,000	95,000	93,500	21.5	2,010,000
Eddy	7,700	7,500	16.0	120,000	9,000	8,800	24.9	219,000
Foster	7,100	6,700	15.2	102,000	11,000	10,800	23.8	257,000
Kidder	17,000	9,700	7.4	72,000	22,000	21,800	18.0	393,000
Sheridan	32,100	31,200	9.6	301,000	42,500	42,400	20.8	882,000
Stutsman	12,400	11,700	15.5	181,000	23,500	23,300	19.0	442,000
Wells	13,700	13,200	11.7	154,000	23,000	22,600	20.9	472,000
Combined Counties								
<b>Central</b>	90,000	80,000	11.6	930,000	131,000	129,700	20.5	2,665,000
Barnes					2,100	2,000	23.0	46,000
Cass								
Griggs	1,100	1,000	16.0	16,000	900	800	21.3	17,000
Steele					1,600	1,400	20.7	29,000
Traill								
Combined Counties	2,900	2,900	14.8	43,000	400	400	20.0	8,000
<b>East Central</b>	4,000	3,900	15.1	59,000	5,000	4,600	21.7	100,000
Adams								
Billings								
Bowman	3,300	3,100	13.2	41,000	3,000	2,800	16.8	47,000
Golden Valley	1,500	1,500	12.7	19,000	1,900	1,700	18.8	32,000
Hettinger	16,900	16,000	8.1	130,000	15,400	15,200	23.0	349,000
Slope	2,400	2,300	11.3	26,000	2,200	2,100	18.1	38,000
Stark	3,900	3,800	8.7	33,000	4,000	3,700	23.8	88,000
Combined Counties	2,000	1,900	7.4	14,000	1,500	1,100	14.5	16,000
<b>Southwest</b>	30,000	28,600	9.2	263,000	28,000	26,600	21.4	570,000
Burleigh	22,800	18,100	7.4	134,000	22,000	21,400	22.2	475,000
Emmons	5,200	2,200	5.0	11,000	7,300	7,200	16.9	122,000
Grant	4,500	2,800	5.0	14,000				
Morton					1,700	1,600	23.1	37,000
Sioux								
Combined Counties	2,700	1,400	5.0	7,000	4,000	3,700	13.8	51,000
<b>South Central</b>	35,200	24,500	6.8	166,000	35,000	33,900	20.2	685,000
Dickey	1,300	1,200	7.5	9,000	2,500	2,200	15.0	33,000
LaMoure					3,900	3,800	16.1	61,000
Logan	8,600	5,900	10.5	62,000	10,900	10,800	16.2	175,000
McIntosh	5,600	3,900	8.2	32,000	7,000	6,900	17.7	122,000
Ransom								
Richland								
Sargent								
Combined Counties	2,300	2,300	9.1	21,000	700	400	22.5	9,000
<b>Southeast</b>	17,800	13,300	9.3	124,000	25,000	24,100	16.6	400,000
<b>Combined Districts</b>								
<b>State Total</b>	750,000	715,000	14.5	10,368,000	890,000	865,000	21.0	18,165,000

<sup>1</sup> Data published in combined counties or districts to avoid disclosure of individual operations.