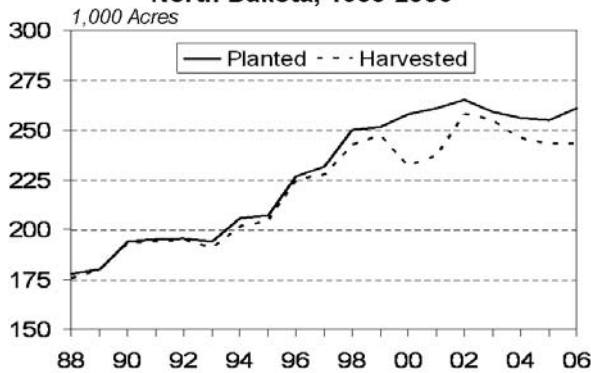
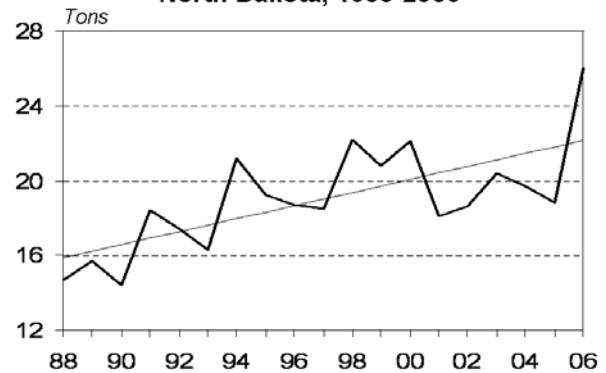


Sugarbeets

**Sugarbeets: Planted and Harvested Acres
North Dakota, 1988-2006**



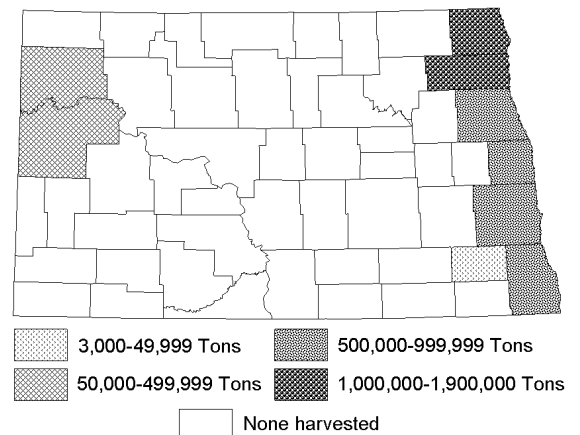
**Sugarbeets: Yield Per Acre
North Dakota, 1988-2006**



**Sugarbeets: Acreage, Yield, Production, Price and Value
North Dakota, 1997-2006**

Year	Area Planted 1,000 Acres	Area Harvested 1,000 Acres	Yield per Acre Tons	Production 1,000 Tons	Marketing Year Avg Price \$/Ton	Value of Production ² \$1,000	Value per Harvested Acre Dollars
1997	231.4	227.5	18.5	4,205	37.90	159,370	700.53
1998	250.0	242.6	22.2	5,386	35.40	190,664	785.92
1999	251.6	247.0	20.8	5,138	38.00	195,244	790.46
2000	258.0	232.0	22.1	5,127	37.80	193,801	835.35
2001	261.0	237.0	18.1	4,290	46.10	197,769	834.47
2002	265.0	258.0	18.6	4,799	41.00	196,759	762.63
2003	259.0	255.0	20.4	5,202	46.30	240,853	944.52
2004	256.0	246.0	19.7	4,846	39.50	191,417	778.12
2005	255.0	243.0	18.8	4,568	49.20	224,746	924.88
2006	261.0	243.0	26.0	6,318			

**Sugarbeets: Production
North Dakota, 2006**



¹ 2006 marketing year average (MYA) price is not available until February 2008. ² Value is computed by multiplying price by production.

**Sugarbeets: Area Planted and Harvested, Yield, Production and Sucrose Content
North Dakota by County, 2006 and 2005**

County	2006					2005				
	Area Planted Acres	Area Harvested Acres	Yield per Acre Tons	Production Tons	Sucrose Content Pct	Area Planted Acres	Area Harvested Acres	Yield per Acre Tons	Production Tons	Sucrose Content Pct
Williams	4,500	4,500	23.8	107,000	17.99	5,000	4,900	20.0	98,000	19.14
Cavalier						100	100	15.0	1,500	17.12
Grand Forks	32,900	30,400	27.0	822,000	17.65	31,300	30,500	20.4	621,000	18.03
Pembina	79,700	73,200	25.9	1,893,000	18.59	79,200	74,700	15.7	1,174,500	18.22
Walsh	45,600	41,600	25.3	1,054,000	18.44	43,100	42,000	20.1	844,000	18.40
McKenzie	10,800	10,700	25.4	272,000	17.78	10,700	10,600	22.3	236,000	18.98
Cass	26,700	24,700	26.4	651,000	17.94	24,500	23,000	20.9	480,000	18.00
Steele						100	100	20.0	2,000	18.10
Traill	29,200	26,900	27.1	730,000	17.58	29,100	28,400	20.9	593,000	17.81
Ransom	100	100	30.0	3,000	16.83					
Richland	31,300	30,800	25.4	783,000	16.99	31,900	28,700	18.0	518,000	16.41
Other Counties	200	100	30.0	3,000	17.24					
STATE	261,000	243,000	26.0	6,318,000	18.01	255,000	243,000	18.8	4,568,000	18.00