

Crop & Weather Data, 2008

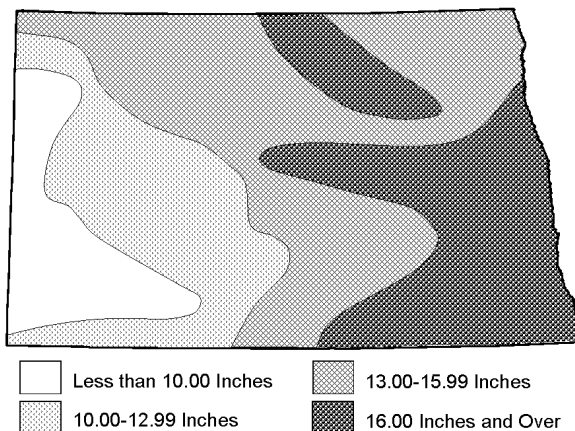
Growing Season Highlights

- Spring tillage and fieldwork for the 2008 crop year began on April 15, ahead of 2007 and the five-year (2003-2007) average.
- Rain and snow showers with cold soil temperatures slowed planting in eastern areas of the state during late April and early May.
- Small grain planting began in early April, ahead of the previous year and the average. By late May, all other crop plantings had advanced ahead of the average pace. Small grain planting progressed ahead of the average throughout the planting season.
- June and July saw mostly below normal temperatures which slowed crop development. As of July 27, all late season crop development was behind to near last year and the average.
- Small grain harvest began by July 27. Mostly hot, dry conditions provided favorable weather for the small grain harvest.
- Cool, wet weather during September and October slowed the maturity of corn. During October, rain slowed harvest as near to above normal temperatures prevailed across the state.
- The 2008 crop year saw below normal rainfall through June 1 at all weather stations except Hettinger. The southwest corner of the state experienced mostly very short to short soil moisture conditions throughout the year. Topsoil moisture supplies were rated lower than average until August 3 while subsoil moisture supplies were rated lower than average until September 7. Moisture supplies were rated above the average for the remainder of 2008 crop year.

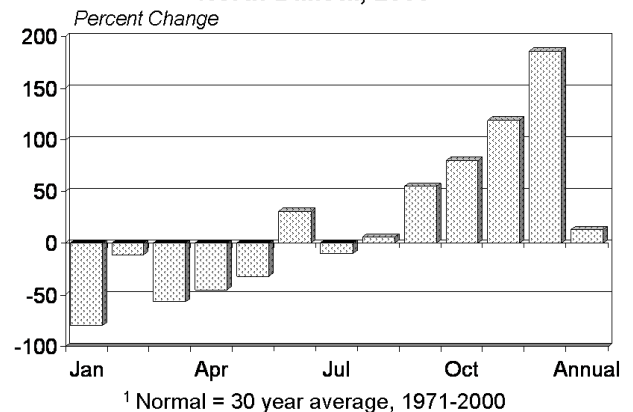
**Topsoil Moisture Supplies
Growing Season, April-September 2008**



**Growing Season Precipitation
April-September, 2008**



**Precipitation: Departure from Normal¹
North Dakota, 2008**



Monthly Precipitation: North Dakota, 2008

Districts and Stations	Jan	Feb	Mar	Apr	May	June	July	Aug	Sept	Oct	Nov	Dec	Annual
	<i>Inches</i>	<i>Inches</i>	<i>Inches</i>	<i>Inches</i>	<i>Inches</i>	<i>Inches</i>	<i>Inches</i>	<i>Inches</i>	<i>Inches</i>	<i>Inches</i>	<i>Inches</i>	<i>Inches</i>	<i>Inches</i>
Crosby	0.14*	0.00*	0.45*	0.18	1.76	3.43	2.83	2.19	2.95	1.10	0.65	0.74	16.42*
Kenmare 1 WSW	0.24	0.40*	0.49*	0.11	3.10	4.15	1.60	3.14	3.65	1.30	0.30	2.35	20.83*
Minot Intl AP	0.04	0.16	0.17	0.48	2.84	4.56	2.32	2.95	1.69	2.06	M	0.39*	M
Stanley 3 NNW	0.20	0.49	0.29	0.36	2.68	3.51	2.62	3.68	2.96	1.48	0.54	1.60	20.41
Wildrose 3 NW	0.26	0.28	0.52	0.24	1.66	3.24	1.90	1.76	2.64	1.72	0.73	1.30	16.25
Williston Exp Farm	0.14	0.09	0.29	0.28	1.40	2.31	0.84	1.40	1.97	1.85	1.17	0.84	12.58
NORTHWEST	0.18	0.32	0.26	0.29	2.06	3.54	2.02	2.15	2.47	1.72	0.89	1.64	17.54
Bottineau	0.10	0.82	0.43	0.57	0.80	4.01	1.95	6.49	2.37	2.37	1.35	0.95	22.21
Drake 9 NE	0.21	0.63	0.09	0.95	1.09	3.85	2.23	3.01*	2.09	2.11	2.50	2.05	20.81*
Towner 2 NE	0.08	0.55*	0.20	0.70	1.88	4.39	1.92	4.43	2.25	1.38	3.55	1.50	22.83*
Upham 3 N	0.12	0.78	0.25	0.35	1.08	4.68	1.02	3.98	1.53	2.16	1.72	1.30	18.97
Velva 3 NE	0.15	0.94*	0.10	0.65	1.65*	5.33	2.42	2.88	2.61	2.18	4.78	1.77	25.46*
Westhope	0.15	0.59	0.32	0.43	1.01	5.80	1.80	3.97	1.69	2.36	0.55	0.93	19.60
NORTH CENTRAL	0.09	0.55	0.21	0.80	1.29	4.48	1.78	4.42	2.13	2.13	2.69	1.25	21.82
Cavalier 7 NW	0.07	0.24	0.39	0.99	0.76	3.58	1.78	1.91	5.53	3.39	2.97	0.60	22.21
Edmore 1 NW	0.18	0.64	0.49	1.13	0.95	3.95	2.52	2.26	4.90	2.91	3.76	1.90	25.59
Grand Forks Intl AP	0.05	0.59	0.50	0.53	1.00	2.96	4.21	2.55	4.39	4.20	2.37	0.98	24.33
Grand Forks Univ (NWS)	0.05	0.56	0.54	0.62	1.57	3.07	3.45	2.80	4.75	4.73	2.49	0.99	25.62
Langdon Exp Farm	0.09	0.38	0.41	1.05	0.94	4.50	2.44	M	3.54	2.98	2.53	0.91	M
Petersburg 2 N	0.26*	1.75*	0.48*	0.31	0.80	2.41	3.15	3.08	2.80	3.16	0.99	1.62*	20.81*
NORTHEAST	0.11	0.44	0.41	0.89	1.07	3.66	2.78	2.69	4.29	3.39	2.44	1.03	23.20
Dickinson Ranch HQ	0.07	0.34	0.38	0.61	2.79	4.02	1.06	1.02	1.04	1.68	0.82	1.05	14.88
Grassy Butte 2 ENE	0.20	0.13	0.14	0.60	1.97	4.30	1.02	1.64	1.73	1.50	0.97	1.09	15.29
Taylor 7 NNW	0.06	0.11	0.36	0.24	1.74	3.66	2.90	0.75	0.82	1.19	1.34	0.67	13.84
Turtle Lake	0.03	0.57	0.09	1.23	1.10	5.37	1.95	2.45	1.76	2.10	1.05	1.97	19.67
Underwood	0.04	0.60	0.12	0.97	0.94	4.42	1.75	1.41	1.22	1.57	1.51	1.83	16.38
Watford City	0.13	0.25	0.14	0.26	1.74	3.18	1.94	0.90	2.02	1.50	0.95	1.36	14.37
WEST CENTRAL	0.09	0.32	0.16	0.54	1.82	4.03	2.05	1.34	1.54	1.57	1.29	1.36	16.11
Harvey 4 NE	0.00*	0.33*	0.45	1.97*	0.62	3.45	2.92	6.54	3.21	2.77	1.19*	0.04*	23.49*
Jamestown Municipal AP	0.01	0.17	0.25	0.79	0.76	6.03	3.83	1.47	2.73	2.55	1.76	0.47	20.82
McHenry 3 W	0.10	1.01	0.37	0.22	0.74	5.90	2.09	3.50	4.24	2.53	1.92	1.96	24.58
Steele 3 N	0.18	0.58	0.45	0.57	0.31	8.26	3.36	1.22	1.89	3.39	1.65	1.63	23.49
Streeter 7 NW	0.03	0.29	0.32	0.50	0.09	4.59	2.76	1.42	2.73	2.74	0.68	1.16	17.31
CENTRAL	0.09	0.51	0.33	0.78	0.61	5.19	2.58	2.55	3.24	2.82	1.45	1.43	21.58
Cassellton Agronomy Frm	0.00	0.70*	0.64	1.72	2.10	6.03	3.44	3.34	M	4.51	1.14	2.05*	M
Cooperstown	0.00*	0.74*	0.24	1.19	0.82	5.06	4.41	1.89	2.80	3.15	2.51	1.54*	24.35*
Fargo Hector Intl AP	0.09	0.67	0.98	2.33	1.89	6.06	1.78	4.55	5.08	4.46	1.13	1.80	30.82
Mayville	0.07	0.52	0.46	M	1.35	4.80	5.31	2.96	3.32	3.90	1.87	1.07	M
Valley City 3 NNW	0.05	0.67	0.36	0.53	1.01	6.07	2.28	1.85	M	3.04	1.73	1.61	M
EAST CENTRAL	0.04	0.61	0.52	1.44	1.28	5.11	3.58	2.68	3.73	3.85	1.67	1.49	26.00
Bowman	0.11	0.69	0.37	0.57	3.95	3.95	1.10	1.53	0.38	1.89	1.19	0.70	16.43
Dickinson Exp Station	0.14	0.11*	0.06*	0.26	1.82	2.41	1.82	0.90	0.91	1.21	1.27	1.12*	12.03*
Hettinger Exp Station	0.15	0.40	0.32	0.98	4.01	4.08	1.23	1.75	0.63	2.40	2.58	0.62*	19.15*
Medora	0.10	0.73	0.21	0.44	3.06	1.53	1.26	1.85	1.26	1.95	0.96	0.85	14.20
New England	0.12	0.11	0.06	0.14	2.32	2.33	1.48	1.74	0.96	1.70	1.36	0.08	12.40
Richardton Abbey	0.11	0.04	0.24*	0.45	1.32	3.93	2.04	0.56	1.70	1.45	0.79*	1.10*	13.73*
SOUTHWEST	0.12	0.29	0.23	0.39	2.59	2.86	1.68	1.23	1.05	1.62	1.47	0.53	14.06
Bismarck Municipal AP	0.11	0.41	0.45	0.73	1.27	3.92	2.84	1.13	2.46	1.73	2.25	1.41	18.71
Hazleton 4 NW	0.20	0.24	0.55	0.55	1.30	5.44	3.24	1.54	2.27	3.03	2.06	1.23*	21.65*
Mandan Exp Station	0.08	0.36	0.45	0.55	1.59	4.88	2.52	0.90	1.56	1.80	3.68	1.81	20.18
New Salem 5 NW	0.16	0.24	0.55	0.74	1.73	4.27	2.64	0.76	1.44	1.59	1.99	1.57	17.68
Pretty Rock	0.08	0.26	0.35	0.89	2.16	3.76	1.51	1.32	2.30	2.19	1.39	0.49	16.70
Wilton	0.21*	0.68*	0.00*	0.28*	1.55	4.81	3.56	0.49	2.93*	1.82	2.24*	2.78	21.35*
SOUTH CENTRAL	0.12	0.34	0.48	0.73	1.72	4.62	2.50	1.18	1.94	1.89	2.03	1.26	18.81
Ashley	0.01	0.15	0.51*	0.11*	1.03*	5.02	5.90	2.40	3.75	2.56	0.20	0.44	22.08*
Fullerton 1 ESE	0.00*	0.32*	0.42	0.75	2.01	4.62	3.41	1.32	4.73	5.07	0.22*	1.60	24.47*
Lidgerwood	0.06	0.28*	0.63	1.78	1.63	4.10	1.62	2.92	4.41	5.83	0.80	1.41	25.47*
Lisbon	T	0.52*	0.55*	0.79	1.97	5.51	1.87	2.29	4.63	4.36	0.71	1.54	24.74*
Napoleon	0.10	0.28	0.54	0.70	0.49*	4.45	3.50	1.42	1.70*	3.41	0.99	1.11	18.69*
Wishek	0.05*	0.26*	0.55*	1.34	1.27	4.20	4.67	2.74	2.45	3.42	0.26*	0.00*	21.21*
SOUTHEAST	0.05	0.33	0.52	1.09	1.78	4.48	3.41	2.12	4.12	4.19	0.66	1.32	24.07
STATE	0.10	0.41	0.35	0.77	1.58	4.22	2.49	2.26	2.72	2.58	1.62	1.26	20.36

Source: National Climatic Data Center. * = Partially estimated. T = Trace. M = Missing.

20 Temperature

Monthly Temperature: North Dakota, 2008

Districts and Stations	Jan	Feb	Mar	Apr	May	June	July	Aug	Sept	Oct	Nov	Dec	Annual
	° F	° F	° F	° F	° F	° F	° F	° F	° F	° F	° F	° F	° F
Crosby	10.1	10.4	27.7	41.5	52.5	60.4	68.9	68.4	55.9	44.5	31.1	4.3	39.6
Kenmare 1 WSW	10.9	9.4	25.3	38.9	51.1	59.6	68.7	68.5	56.4	43.5*	27.1	2.3	38.5*
Minot Intl AP	13.1	11.7	28.0	42.1	52.4	60.8	68.9	68.9	56.8	45.7	29.0	5.1	40.2
Stanley 3 NNW	8.4	7.6	25.4	38.1	49.6	58.4	67.8	66.4	53.8	41.7	28.7	2.2	37.3
Wildrose 3 NW	7.8	7.7	25.5	38.9	50.8	58.0	67.1	67.0	53.8	40.9	28.7	2.1	37.4
Williston Exp Farm	15.3	17.4	33.3	44.2	55.9	63.2	74.1	73.2	59.9	47.3	34.1	8.3	43.9
NORTHWEST	10.3	10.1	26.9	40.5	51.8	60.1	69.3	68.9	55.8	43.8	29.6	3.7	39.2
Bottineau	4.2	3.4	22.1*	39.4	50.5	59.8	68.0	67.4	54.9	41.9*	26.6	-0.1	36.5*
Drake 9 NE	8.3	6.2	24.3	38.5	50.8	60.6	69.2	68.4	56.7	44.3	27.4	1.5	38.0
Towner 2 NE	5.9	4.3	23.5	39.1	50.3	59.7	68.9	67.5	55.8	43.3	24.8	0.1	36.9
Upham 3 N	4.8	5.2	22.7	39.4	51.6	60.5	68.1	67.5	55.0	42.6	26.3	-0.1	37.0
Velva 3 NE	8.7	6.8	25.5	35.4	50.8	58.6	66.1	66.7	54.6	43.6	25.1	1.4	36.9
Westhope	6.1	6.7	25.3	41.6	52.7	61.5	68.9	69.1	57.6	44.9	27.9	-0.1	38.5
NORTH CENTRAL	5.0	4.4	22.5	38.1	50.3	59.5	67.0	66.8	55.1	42.9	25.7	0.1	36.5
Cavalier 7 NW	3.4	1.6	19.1	38.5	49.8	61.3	65.9	66.1	56.5	44.8	27.3	0.6	36.2
Edmore 1 NW	1.0	1.9*	17.4*	37.3	47.1*	59.0	65.2	65.5	54.9	42.6	25.6	-1.2	34.9*
Grand Forks Intl AP	3.5	4.0	21.3	40.0	50.6	61.9	67.6	68.0	57.4	45.7	29.5	1.7	37.6
Grand Forks Univ (NWS)	4.7	4.8	21.6	40.0	51.4	62.4	68.2	68.3	57.7	45.8	29.1	2.1	38.0
Langdon Exp Farm	2.4	1.3	17.7	37.0	48.1	59.4	64.6	M	54.9	42.3	24.7	-1.7	M
Petersburg 2 N	2.9	1.3	19.2	37.8	49.8	60.7	67.0	66.8	56.5	43.6	26.7	-0.3	36.1
NORTHEAST	3.4	2.5	19.6	38.4	49.4	60.8	66.6	66.9	56.5	44.2	27.0	0.2	36.3
Dickinson Ranch HQ	13.7	15.6	30.2	41.4	52.7	60.7	71.4	70.4	57.3	44.5	33.0	8.3	41.6
Grassy Butte 2 ENE	14.5	17.4	31.4	41.9	53.5	59.8	71.3	70.9	57.1	44.8	32.2	8.0	41.9
Taylor 7 NNW	14.6	17.2*	31.8	41.4	53.3	60.5	70.9	71.4	58.3	45.8	32.3	8.4	42.2*
Turtle Lake	9.8	9.3	26.9	39.7	51.6	60.6	70.7	69.4	56.8	44.1	28.4	3.6	39.2
Underwood	10.3	9.1	26.7	39.1	51.9	60.6	71.5	70.0	56.7	43.9	28.9	4.8	39.5
Watford City	13.5	14.5	30.7	41.1	53.5	61.1	72.5	70.3	57.2	44.6	32.8	7.1	41.6
WEST CENTRAL	12.5	12.9	29.3	40.8	52.7	60.7	71.1	70.2	57.4	44.9	30.7	6.1	40.8
Harvey 4 NE	7.2	6.2	23.5	38.9	50.7	59.6	67.3	66.6	55.5	43.7	27.5	1.2*	37.3*
Jamestown Municipal AP	7.3	7.5	25.5	40.1	51.7	61.9	68.8	67.7	56.8	45.3	29.9	5.2	39.0
McHenry 3 W	5.4	6.2	23.9	40.3	52.5	61.8	69.1	68.3	57.7	45.7	28.6	3.1	38.6
Steele 3 N	10.6	12.0	28.3	41.2	52.0	60.2	68.5	68.9	57.3	44.9	29.8	4.8*	39.9*
Streeter 7 NW	8.5	7.9	25.6	37.5	49.8	59.6	67.9	68.2	57.2	44.1	29.4	4.9	38.4
CENTRAL	8.3	8.4	25.3	39.9	51.6	61.0	69.0	68.6	57.3	44.7	29.2	4.3	39.0
Casseltown Agronomy Frm	5.0	4.7	22.0	40.2	53.6	63.0	70.2	68.6	M	46.0	31.0	4.3	M
Cooperstown	3.2	4.3	21.9	38.9	50.8	60.0	66.4	66.1	56.2	44.0	28.3	1.3	36.8
Fargo Hector Intl AP	6.5	7.5	22.8	41.0	53.9	63.6	70.3	69.5	59.7	46.7	31.8	5.9	39.9
Mayville	3.5	3.0	20.4	M	50.7	62.6	67.9	67.2	58.0	45.2	29.1	2.4	M
Valley City 3 NNW	4.4	4.6	22.7	38.2	51.1	61.5	68.6	67.7	M	45.1	29.5	4.1	M
EAST CENTRAL	4.6	5.0	22.1	39.5	52.4	62.3	69.0	68.1	58.0	45.8	29.7	3.6	38.3
Bowman	15.2	16.7	32.4	40.2	51.8	60.4	72.0	70.3	57.8	44.4	31.4	10.8	42.0
Dickinson Exp Station	14.0	16.3	29.9	40.0	52.5	60.5	71.5	70.3	57.1	43.4	31.2	8.5	41.3
Hettinger Exp Station	16.5*	16.2	31.7	39.8	52.0	59.9	71.4	70.0	57.2	44.7	31.7*	11.4	41.9*
Medora	13.4	16.5	32.8	41.4	53.9	62.2	72.8	70.8	56.1	43.8	32.9	9.2	42.2
New England	15.8	18.5	31.3	41.0	52.7	61.8	71.9	71.4	57.1	45.5	31.9	9.8	42.4
Richardton Abbey	16.5	17.9	32.1	41.5	54.0	62.1	72.8	71.9	58.8	46.8	31.9	9.6*	43.0*
SOUTHWEST	15.4	17.1	31.5	41.1	52.8	60.8	71.8	70.6	57.2	44.8	31.8	9.7	42.1
Bismarck Municipal AP	11.7	14.5	30.6	41.8	53.0	62.0	72.2	71.6	59.0	45.7	31.2	6.9	41.7
Hazleton 4 NW	10.3	11.4	28.1	39.1	50.8	60.7	69.1	67.8	56.9	43.9	29.4	7.8*	39.6*
Mandan Exp Station	12.2	13.0	29.7	40.9	52.6	61.3	71.3	70.4	57.7	45.2	30.6	7.2	41.0
New Salem 5 NW	11.2	13.1	29.2	40.3	50.6	60.0	70.7	69.6	57.1	44.5	28.4	5.2	40.0
Pretty Rock	15.3	17.8	32.7	41.7	53.0	61.1	71.5	71.4	58.4	46.1	31.7	9.9	42.6
Wilton	9.8	8.8	28.0	39.3	51.3	59.9	69.4	69.1*	56.3	44.4	29.2	4.7	39.2*
SOUTH CENTRAL	12.2	13.7	30.0	40.5	52.2	61.0	71.0	70.1	57.7	44.9	30.6	7.4	40.9
Ashley	11.5	12.5	28.5	40.4	51.6	62.2	71.3	70.5	58.8	45.6*	30.9	8.8	41.1
Fullerton 1 ESE	11.7	14.2*	30.5	41.5	53.9*	63.6	71.5	69.3	59.6	45.3	31.0	8.7*	41.7*
Lidgerwood	8.2	9.2	25.1	40.0	53.9	64.7	71.7	71.2	61.3	46.9	32.0	7.6	41.0
Lisbon	6.1	7.2	24.2*	39.1*	54.3	63.5*	71.4	70.8	60.8	46.3	32.3	6.4	40.2*
Napoleon	10.6	10.5	27.9	38.9	50.9	61.1	69.6	68.9	57.9	45.2	30.1	6.1	39.8
Wishek	9.3	10.1	26.4	38.0	50.9	60.6	69.6	68.7	57.1	44.0	29.2	9.0*	39.4*
SOUTHEAST	8.4	9.7	26.3	39.5	52.5	62.8	71.0	69.9	59.5	45.8	31.0	7.2	40.3
STATE	8.9	9.3	25.9	39.8	51.7	61.0	69.5	68.9	57.2	44.6	29.5	4.7	39.3

Source: National Climatic Data Center * = Partially estimated. M = Missing.

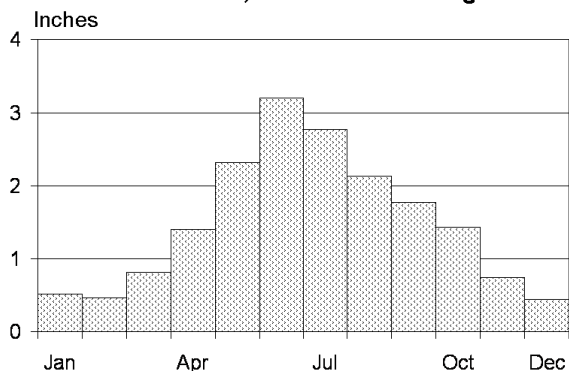
Growing Season Average

**Growing Season Precipitation
April-September, 1971-2000 Average**

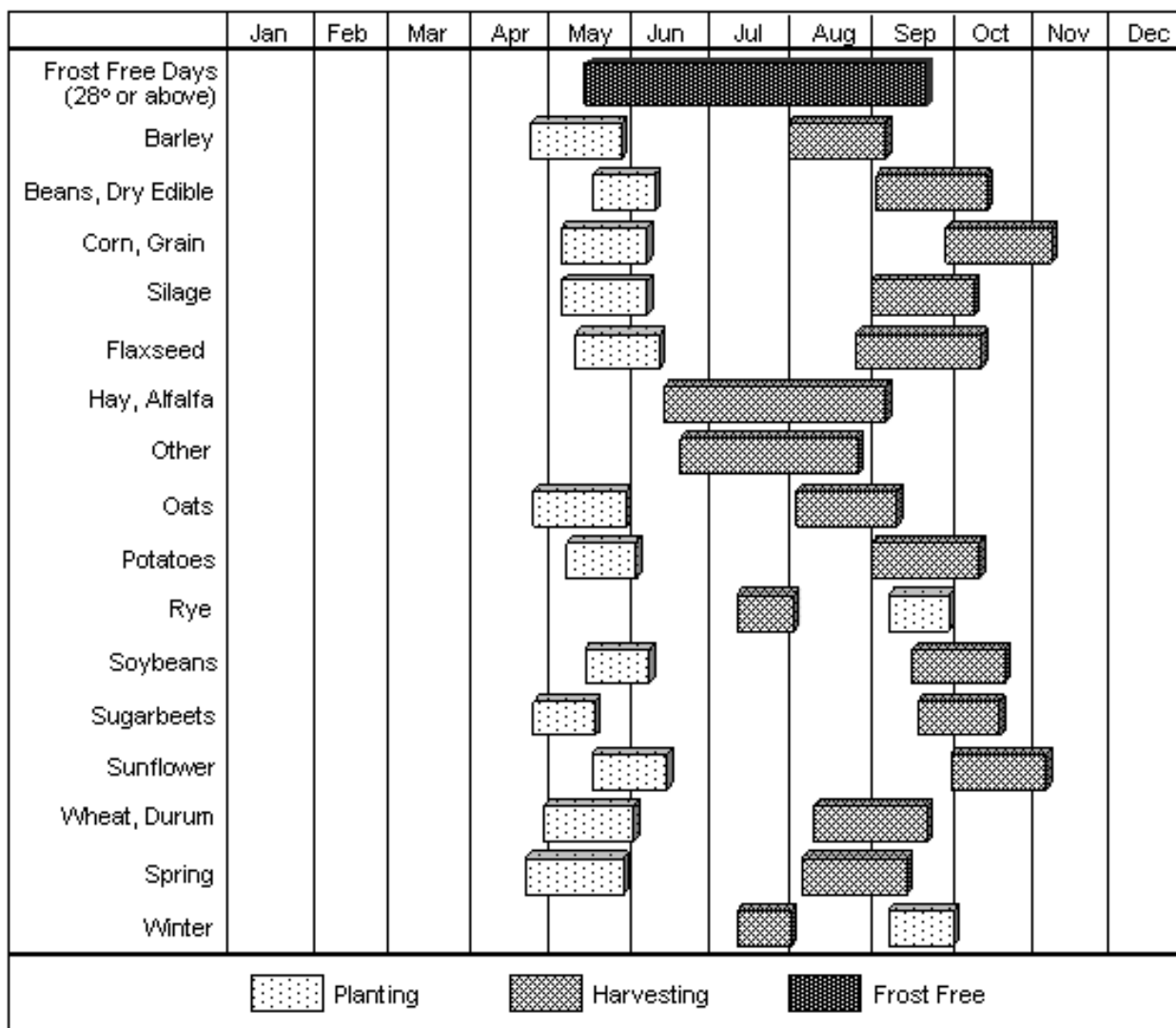


Less than 12.00 Inches
 14.00-15.99 Inches
 12.00-13.99 Inches
 16.00 Inches and Over

**Monthly Precipitation
North Dakota, 1971-2000 Average**



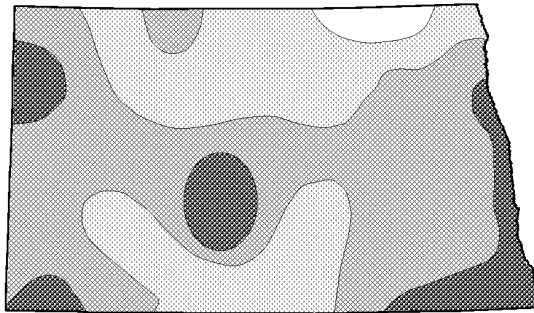
Usual Planting and Harvesting Dates: North Dakota



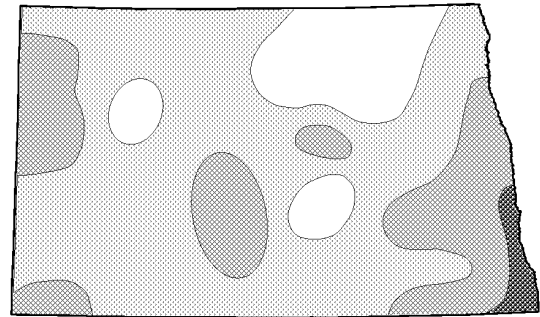
Source: Usual Planting and Harvesting Dates for US Field Crops, USDA/NASS, December 1997.

Growing Season Average

Number of Days Above 32°F
Long Term Average ¹



Number of Days Above 28°F
Long Term Average ¹



Length of Growing Season at Temperatures of 28°F and 32°F or above: North Dakota ¹

Station	County	Average Date of Last Spring Frost		Average Date of First Frost in Fall		Average Number of Days in Growing Season		Number of Years in Average
		28° Date	32° Date	32° Date	28° Date	32° Days	28° Days	
NORTHWEST								
Crosby	Divide	May 10	May 18	Sept 16	Sept 23	120	137	63
Minot Exp.	Ward	May 12	May 20	Sept 17	Sept 26	119	137	69
Mohall	Renville	May 11	May 18	Sept 16	Sept 23	122	135	44
Parshall	Mountrail	May 15	May 21	Sept 12	Sept 18	114	126	59
Powers Lake	Burke	May 15	May 23	Sept 11	Sept 23	111	133	41
Williston	Williams	May 4	May 13	Sept 22	Sept 28	132	146	78
NORTH CENTRAL								
Bottineau	Bottineau	May 15	May 21	Sept 15	Sept 23	116	130	70
Granville	McHenry	May 13	May 19	Sept 15	Sept 25	119	134	65
Maddock	Benson	May 15	May 23	Sept 13	Sept 21	113	129	53
Towner	McHenry	May 14	May 21	Sept 12	Sept 21	114	129	54
NORTHEAST								
Grafton	Walsh	May 9	May 18	Sept 19	Sept 25	123	139	70
Grand Forks	Grand Forks	May 6	May 16	Sept 23	Sept 29	130	146	66
Hansboro	Towner	May 17	May 27	Sept 11	Sept 18	106	124	65
Langdon Exp.	Cavalier	May 17	May 28	Sept 13	Sept 21	109	126	69
Pembina	Pembina	May 12	May 21	Sept 17	Sept 25	119	135	70
WEST CENTRAL								
Dunn Center	Dunn	May 12	May 17	Sept 18	Sept 27	122	137	50
Garrison	McLean	May 8	May 18	Sept 19	Sept 25	124	139	62
Washburn	McLean	May 6	May 13	Sept 24	Oct 1	137	148	26
Watford City	McKenzie	May 7	May 13	Sept 19	Sept 27	127	141	34
CENTRAL								
Fessenden	Wells	May 8	May 17	Sept 18	Sept 26	123	140	40
Jamestown	Stutsman	May 5	May 15	Sept 20	Sept 29	128	146	73
McClusky	Sheridan	May 11	May 20	Sept 18	Sept 26	120	137	54
Pettibone	Kidder	May 13	May 22	Sept 12	Sept 17	111	124	46
EAST CENTRAL								
Amenia	Cass	May 6	May 15	Sept 23	Sept 28	130	144	73
Cooperstown	Griggs	May 11	May 21	Sept 19	Sept 26	121	138	49
Fargo	Cass	May 4	May 12	Sept 26	Oct 2	137	151	66
Mayville	Traill	May 8	May 17	Sept 24	Oct 2	129	147	57
SOUTHWEST								
Beach	Golden Valley	May 12	May 20	Sept 18	Sept 27	121	138	58
Bowman	Bowman	May 6	May 14	Sept 21	Sept 30	130	146	52
Dickinson Exp.	Stark	May 12	May 19	Sept 14	Sept 22	117	132	72
Hettinger	Adams	May 11	May 18	Sept 20	Sept 27	124	137	36
Marmarth	Slope	May 11	May 16	Sept 15	Sept 23	122	136	43
SOUTH CENTRAL								
Carson #2	Grant	May 11	May 19	Sept 15	Sept 24	119	135	59
Mandan Exp.	Morton	May 7	May 12	Sept 23	Sept 28	133	144	59
SOUTHEAST								
Edgeley Exp.	LaMoure	May 11	May 18	Sept 19	Sept 28	123	139	66
Lisbon	Ransom	May 10	May 19	Sept 20	Sept 27	123	139	64
McLeod	Ransom	May 9	May 15	Sept 22	Sept 29	129	143	62
Napoleon	Logan	May 14	May 21	Sept 16	Sept 23	118	132	72
Oakes	Dickey	May 5	May 13	Sept 23	Oct 1	133	149	46
Wahpeton	Richland	May 4	May 13	Sept 25	Oct 3	136	151	65

Source: National Climatic Data Center. ¹ Based on data for selected stations. Number of years used in average ranges by station from 26-78 years.

Average Precipitation: North Dakota, 1971-2000

Districts and Stations	Jan	Feb	Mar	Apr	May	June	July	Aug	Sept	Oct	Nov	Dec	Annual
	<i>Inches</i>	<i>Inches</i>	<i>Inches</i>	<i>Inches</i>	<i>Inches</i>	<i>Inches</i>	<i>Inches</i>	<i>Inches</i>	<i>Inches</i>	<i>Inches</i>	<i>Inches</i>	<i>Inches</i>	<i>Inches</i>
Crosby	0.48	0.33	0.59	1.02	2.01	2.69	2.75	1.54	1.62	0.93	0.53	0.45	14.94
Fortuna 1 W	0.34	0.36	0.76	0.99	1.98	2.87	2.71	1.62	1.33	0.85	0.33	0.39	14.53
Kenmare 1 WSW	0.83	0.63	0.90	1.26	2.07	2.66	2.67	1.80	1.92	1.19	0.69	0.53	17.15
Minot Exp Station	0.77	0.60	1.03	1.56	2.28	3.01	2.52	2.01	1.78	1.40	1.05	0.64	18.65
Mohall	0.52	0.42	0.73	1.24	2.17	2.98	2.86	2.17	1.89	1.46	0.63	0.39	17.46
Powers Lake 1 N	0.38	0.37	0.72	1.27	2.12	2.74	2.90	1.94	1.71	1.07	0.55	0.33	16.10
Tioga 1 E	0.48	0.36	0.58	1.17	2.00	2.60	2.20	1.80	1.58	0.94	0.59	0.40	14.70
Wildrose 3 NW	0.42	0.35	0.60	1.00	2.04	2.56	2.83	1.56	1.48	0.83	0.53	0.45	14.65
Williston Exp Farm	0.48	0.34	0.62	1.13	2.09	2.72	2.45	1.63	1.56	0.94	0.58	0.45	14.99
NORTHWEST	0.52	0.45	0.75	1.25	2.12	2.89	2.64	1.80	1.69	1.09	0.63	0.47	16.30
Bottineau	0.49	0.46	0.79	1.22	2.16	3.29	3.04	2.62	1.94	1.27	0.66	0.51	18.45
Drake 9 NE	0.36	0.39	0.60	1.25	2.26	3.04	2.75	1.97	1.48	1.24	0.68	0.34	16.36
Leeds	0.55	0.51	0.83	1.28	2.08	2.98	3.17	2.07	1.61	1.53	0.84	0.48	17.93
Rolla 3 NW	0.51	0.52	0.76	1.13	2.30	3.41	2.87	2.55	1.95	1.25	0.80	0.53	18.58
Rugby	0.51	0.45	0.80	1.28	2.25	3.05	3.21	2.28	1.92	1.32	0.70	0.50	18.27
Upham 3 N	0.57	0.47	0.76	1.33	2.07	3.32	2.71	2.00	1.80	1.28	0.85	0.56	17.72
Velva 3 NE	0.68	0.50	0.78	1.34	2.30	3.22	2.80	1.83	1.62	1.61	0.92	0.50	18.10
Westhope	0.47	0.46	0.71	1.16	2.06	3.03	2.90	2.04	1.87	1.21	0.62	0.49	17.02
Willow City	0.52	0.42	0.78	1.18	1.99	3.10	2.85	2.34	1.72	1.20	0.63	0.44	17.17
NORTH CENTRAL	0.50	0.47	0.76	1.27	2.17	3.17	2.92	2.21	1.77	1.35	0.73	0.49	17.81
Cavalier 7 NW	0.39	0.41	0.66	1.10	2.19	3.17	3.31	2.63	1.78	1.54	0.68	0.39	18.25
Devils Lake KDLR	0.58	0.51	0.80	0.90	2.14	3.83	3.29	2.21	1.80	1.47	0.83	0.57	18.93
Edmore 1 NW	0.50	0.40	0.65	1.02	2.15	3.21	3.32	2.59	1.71	1.39	0.74	0.48	18.16
Grafton	0.52	0.50	0.85	1.13	2.31	3.30	2.77	2.39	1.76	1.46	0.90	0.43	18.32
Grand Forks Intl AP	0.68	0.58	0.89	1.23	2.21	3.03	3.06	2.72	1.96	1.70	0.99	0.55	19.60
Hansboro 4 NNE	0.64	0.63	0.85	1.12	2.39	3.19	2.87	2.59	1.62	1.22	0.81	0.57	18.50
Langdon Exp Farm	0.42	0.39	0.61	1.00	2.36	3.33	3.18	2.73	1.66	1.38	0.66	0.39	18.11
Pembina	0.44	0.40	0.72	0.99	2.09	3.41	2.95	2.68	2.12	1.48	0.85	0.45	18.58
Petersburg 2 N	0.66	0.43	0.94	1.17	2.27	3.62	3.25	2.71	2.06	1.54	0.90	0.51	20.06
NORTHEAST	0.57	0.47	0.80	1.12	2.24	3.34	3.09	2.64	1.88	1.49	0.85	0.50	18.99
Beulah 1 W	0.31	0.42	0.73	1.71	2.21	3.30	2.35	1.53	1.60	1.35	0.70	0.38	16.59
Center 4 SE	0.40	0.45	0.71	1.63	2.30	3.00	2.70	1.85	1.85	1.55	0.62	0.42	17.48
Dickinson Ranch HQ	0.37	0.35	0.61	1.50	2.03	3.18	2.30	1.79	1.40	1.06	0.58	0.33	15.50
Garrison 1 NNW	0.39	0.36	0.63	1.27	2.10	3.12	2.62	1.91	1.44	1.22	0.57	0.39	16.02
Keene 3 S	0.39	0.37	0.59	1.26	2.32	3.19	2.47	1.51	1.68	1.16	0.66	0.40	16.00
Max	0.55	0.43	0.74	1.48	2.16	3.21	2.69	1.84	1.72	1.41	0.63	0.44	17.30
Turtle Lake	0.63	0.49	0.85	1.44	2.19	3.32	2.67	1.96	1.50	1.32	0.73	0.52	17.62
Watford City	0.45	0.39	0.56	1.04	2.13	3.05	2.11	1.55	1.30	0.77	0.65	0.41	14.41
WEST CENTRAL	0.44	0.43	0.68	1.44	2.20	3.18	2.48	1.73	1.62	1.33	0.67	0.42	16.62
Carrington	0.68	0.56	0.91	1.36	2.11	3.32	3.15	2.19	1.60	1.45	0.89	0.51	18.73
Harvey	0.42	0.28	0.62	0.78	1.97	2.80	2.29	2.29	1.45	1.48	0.45	0.28	15.11
Jamestown Municipal AP	0.62	0.52	0.89	1.36	2.21	3.05	3.22	2.33	1.74	1.40	0.71	0.44	18.49
McClusky	0.58	0.49	0.71	1.49	2.13	3.41	2.61	2.06	1.61	1.39	0.71	0.49	17.68
Steele 3 N	0.48	0.44	0.98	1.51	2.53	3.24	2.95	2.01	1.90	1.55	0.74	0.44	18.77
Streeter 7 NW	0.31	0.34	0.68	1.26	1.96	3.04	3.09	2.38	1.97	1.10	0.69	0.27	17.09
CENTRAL	0.54	0.44	0.75	1.35	2.24	3.34	2.97	2.29	1.79	1.46	0.74	0.43	18.34
Cassleton Agronomy Frm	0.75	0.51	1.23	1.43	2.67	3.60	3.24	2.68	2.13	1.89	1.03	0.37	21.53
Colgate	0.47	0.39	0.81	1.17	2.49	3.08	2.65	2.42	2.06	1.69	0.76	0.38	18.37
Cooperstown	0.67	0.53	1.01	1.31	2.56	3.30	3.33	2.78	1.96	1.65	0.90	0.50	20.50
Fargo Hector AP	0.76	0.59	1.17	1.37	2.61	3.51	2.88	2.52	2.18	1.97	1.06	0.57	21.19
Hillsboro 3 N	0.50	0.55	0.93	1.56	2.35	3.46	3.23	2.78	2.05	1.92	0.89	0.48	20.70
Sharon	0.68	0.54	1.12	1.33	2.65	3.55	3.45	2.67	2.05	1.67	0.97	0.55	21.23
Valley City 3 NNW	0.54	0.46	0.80	1.22	2.60	3.27	2.75	2.43	2.10	1.53	0.80	0.39	18.89
EAST CENTRAL	0.64	0.53	1.01	1.36	2.54	3.39	3.10	2.64	2.11	1.81	0.95	0.50	20.58
Amidon	0.37	0.35	0.57	1.15	2.29	3.06	2.24	1.42	1.37	1.17	0.53	0.33	14.85
Beach	0.43	0.47	0.62	1.56	2.41	2.63	1.93	1.41	1.53	1.20	0.70	0.37	15.26
Bowman	0.49	0.48	0.73	1.32	2.53	3.07	2.03	1.20	1.31	1.33	0.59	0.42	15.50
Dickinson Exp Station	0.35	0.37	0.67	1.63	2.24	3.57	2.20	1.65	1.62	1.31	0.63	0.37	16.61
Fairfield	0.31	0.33	0.56	1.41	2.04	2.95	2.10	1.62	1.50	1.16	0.50	0.31	14.79
Mott	0.41	0.50	0.80	1.83	2.59	3.17	2.13	1.69	1.26	1.24	0.55	0.38	16.55
New England	0.38	0.39	0.69	1.62	2.46	3.38	1.93	1.73	1.44	1.37	0.47	0.38	16.24
Richardton Abbey	0.45	0.48	0.86	1.75	2.49	3.39	2.27	1.88	1.60	1.41	0.75	0.45	17.78
Trotters 3 SSE	0.35	0.39	0.58	1.23	2.09	2.90	1.89	1.50	1.61	1.16	0.61	0.40	14.71
SOUTHWEST	0.39	0.41	0.68	1.51	2.35	3.11	2.12	1.54	1.47	1.27	0.60	0.38	15.83
Almont	0.37	0.33	0.63	1.49	2.22	3.41	2.48	2.28	1.24	1.17	0.62	0.40	16.64
Bismarck Municipal AP	0.45	0.51	0.85	1.46	2.22	2.59	2.58	2.15	1.61	1.28	0.70	0.44	16.84
Breien	0.35	0.38	0.66	1.60	2.49	2.92	2.69	1.77	1.48	1.32	0.52	0.35	16.53
Fort Yates 4 SW	0.24	0.30	0.66	1.34	2.16	2.64	2.06	1.62	1.28	1.26	0.35	0.23	14.14
Heart Butte Dam	0.51	0.32	0.87	1.70	2.34	2.91	2.31	1.45	1.16	0.99	0.77	0.42	15.75
Mandan Exp Station	0.38	0.37	0.58	1.52	2.41	2.91	2.90	2.02	1.56	1.41	0.62	0.36	17.04
New Salem 5 NW	0.47	0.49	0.81	1.88	2.42	3.17	2.76	2.11	1.53	1.38	0.76	0.50	18.28
Pretty Rock	0.33	0.41	0.86	1.89	2.64	3.02	2.34	1.76	1.40	1.34	0.62	0.31	16.92
SOUTH CENTRAL	0.37	0.40	0.75	1.62	2.37	3.02	2.63	1.96	1.48	1.34	0.62	0.37	16.93
Ashley	0.41	0.39	0.94	1.49	2.73	3.48	2.52	2.30	1.57	1.57	0.61	0.29	18.30
Forman 5 SSE	0.65	0.53	1.24	1.68	2.60	3.54	3.02	2.25	1.93	1.68	1.02	0.44	20.58
Fullerton 1 ESE	0.75	0.66	1.44	1.91	2.84	3.16	2.88	2.22	2.02	1.80	1.03	0.41	21.12
Gackle	0.44	0.38	0.94	1.49	2.61	3.37	3.06	2.03	1.89	1.48	0.77	0.35	18.81
LaMoure	0.78	0.64	1.36	1.85	2.67	3.69	3.42	2.30	1.90	1.78	0.91	0.45	21.75
Lisbon	0.63	0.48	1.09	1.47	2.59	3.45	2.87	2.27	2.20	1.82	0.86	0.45	20.18
Napoleon	0.58	0.51	0.98	1.64	2.48	3.20	2.88	2.19	1.77	1.55	0.80	0.44	19.02
Wahpeton 3 N	0.62	0.39	1.02	1.76	2.96	3.33	3.53	2.69	2.43	2.03	0.74	0.37	21.87
S													

24 Temperature

Average Temperature: North Dakota, 1971-2000

Districts and Stations	Jan	Feb	Mar	Apr	May	June	July	Aug	Sept	Oct	Nov	Dec	Annual
	°F	°F	°F	°F	°F	°F	°F	°F	°F	°F	°F	°F	°F
Crosby	8.1	16.2	28.1	43.3	56.1	64.6	69.2	67.8	56.5	44.2	25.8	12.9	41.1
Fortuna 1 W	5.6	13.6	25.0	40.2	53.1	62.2	67.1	65.8	53.8	41.3	23.7	11.1	38.5
Kenmare 1 WSW	6.7	14.2	25.2	40.4	53.4	62.4	67.0	65.4	54.3	42.1	25.1	12.2	39.0
Minot Exp Station	7.5	14.6	25.9	41.1	55.0	63.9	68.4	67.0	55.6	43.2	25.9	12.8	40.1
Mohall	5.9	13.0	24.3	39.4	53.0	61.9	66.3	65.2	53.8	41.7	24.9	11.5	38.4
Powers Lake 1 N	5.3	13.3	24.9	40.1	53.2	61.7	66.5	65.5	54.0	41.6	24.2	10.8	38.4
Tioga 1 E	6.9	15.1	26.3	40.8	53.4	62.4	67.4	66.5	54.5	42.4	24.9	12.1	39.4
Wildrose 3 NW	6.1	13.8	25.5	40.7	53.5	62.4	67.1	65.8	54.3	41.9	24.6	11.6	38.9
Williston Exp Farm	11.3	19.7	31.1	44.9	57.1	65.7	71.1	70.2	58.8	46.7	28.4	16.1	43.4
NORTHWEST	7.3	15.2	26.5	41.2	53.8	62.8	67.6	66.3	54.9	42.7	25.4	12.5	39.7
Bottineau	3.0	10.5	22.9	39.7	53.8	62.4	66.7	65.5	54.4	41.4	23.2	8.5	37.7
Drake 9 NE	5.0	12.5	24.5	41.0	55.4	64.1	68.6	67.0	56.3	43.0	24.4	10.6	39.4
Leeds	4.1	11.2	22.4	38.8	53.5	62.7	67.0	65.1	54.2	42.1	24.3	10.0	38.0
Rolla 3 NW	4.1	10.6	21.5	37.6	51.6	60.1	65.1	64.0	53.1	40.9	22.9	9.2	36.7
Rugby	5.6	13.5	25.5	42.2	56.0	64.5	68.7	67.4	56.0	43.6	24.8	10.5	39.9
Upham 3 N	3.3	11.4	23.8	40.8	54.8	63.3	67.4	66.0	54.5	41.4	23.7	9.3	38.3
Velva 3 NE	7.1	14.6	26.3	41.5	55.5	64.4	69.1	67.0	56.1	43.6	25.7	12.6	40.3
Westhope	4.7	12.8	25.2	42.2	55.9	64.0	67.9	66.9	56.2	43.4	24.6	10.0	39.5
Willow City	2.1	9.8	22.3	39.9	54.1	62.7	67.0	65.3	53.8	41.2	23.2	8.2	37.5
NORTH CENTRAL	4.7	12.4	24.3	40.5	54.1	62.9	67.3	65.9	54.7	42.2	24.3	10.1	38.6
Cavalier 7 NW	2.5	9.9	22.5	39.8	54.4	63.1	67.1	65.4	55.0	42.4	24.1	8.9	37.9
Devils Lake KDLR	6.1	13.8	25.5	42.1	56.2	64.8	69.4	67.7	57.1	44.3	25.8	11.5	40.4
Edmore 1 NW	0.7	8.1	21.6	39.3	53.7	62.2	66.5	65.2	54.5	41.3	21.9	6.9	36.8
Grafton	5.1	12.9	25.7	43.0	58.2	67.0	71.1	69.6	58.9	45.6	26.3	11.0	41.2
Grand Forks Intl AP	5.3	13.1	25.7	42.3	56.8	65.2	69.4	67.8	57.0	44.3	25.8	11.3	40.3
Hansboro 4 NNE	0.8	8.8	21.3	38.7	53.0	61.2	65.5	64.2	53.5	40.5	20.9	6.7	36.3
Langdon Exp Farm	0.4	7.6	20.2	37.8	52.6	61.5	65.4	64.2	53.5	40.2	21.5	6.6	36.0
Pembina	1.2	8.6	21.9	39.5	54.5	63.0	66.9	65.1	54.4	41.6	23.5	7.9	37.3
Petersburg 2 N	2.5	9.7	22.2	39.3	53.9	62.8	66.9	65.4	54.7	41.7	23.4	8.5	37.6
NORTHEAST	3.4	11.0	23.5	40.3	54.7	63.4	67.5	65.9	55.3	42.6	24.0	9.2	38.4
Beulah 1 W	11.0	18.9	30.0	43.7	56.1	64.5	69.8	69.3	57.8	45.8	28.2	15.8	42.6
Center 4 SE	10.5	17.0	27.7	41.1	54.0	63.0	68.3	67.0	56.1	44.3	27.1	15.4	41.0
Dickinson Ranch HQ	11.8	19.0	29.0	42.1	54.4	63.7	69.4	68.6	57.0	44.7	27.7	16.1	42.0
Garrison 1 NNW	7.5	14.8	26.6	41.5	54.6	63.2	68.2	67.4	56.2	43.4	26.5	13.6	40.3
Keene 3 S	10.8	18.6	29.6	43.5	55.5	64.1	69.4	69.2	57.9	45.6	27.6	15.4	42.3
Max	7.2	14.5	25.7	40.6	54.3	63.2	68.3	66.6	55.1	42.5	25.3	12.3	39.6
Turtle Lake	7.4	14.7	26.9	41.4	54.7	63.5	68.8	67.7	56.7	44.0	25.9	12.8	40.4
Watford City	8.2	17.0	27.6	41.3	53.9	63.0	68.6	67.5	55.2	43.1	26.1	14.0	40.5
WEST CENTRAL	9.8	17.3	28.2	42.1	54.7	63.6	68.9	67.8	56.4	43.9	26.9	14.6	41.2
Carrington	7.0	13.9	25.3	40.7	55.0	63.8	68.6	66.8	55.9	43.5	25.5	12.1	39.8
Harvey	9.3	17.1	28.7	44.4	58.0	66.0	70.8	69.7	59.3	46.7	27.7	14.8	42.7
Jamestown Municipal AP	8.7	15.9	27.9	42.9	56.7	65.4	70.7	69.0	57.9	45.2	27.1	13.8	41.8
McClusky	9.2	16.5	28.1	43.3	56.9	65.6	70.6	69.5	58.5	45.5	27.2	14.0	42.1
Steele 3 N	7.7	15.0	27.1	42.5	55.8	64.5	69.9	68.5	57.6	44.6	26.3	12.9	41.0
Streeter 7 NW	7.5	13.9	25.8	40.6	53.6	62.5	68.2	66.7	55.7	43.3	26.1	12.5	39.7
CENTRAL	7.0	14.4	26.4	41.6	55.3	64.1	69.0	67.3	56.5	43.8	25.6	12.3	40.3
Casselton Agronomy Frm	5.7	12.7	26.2	42.2	56.5	65.2	70.2	68.5	58.3	45.2	26.7	12.4	40.8
Colgate	3.6	10.8	24.1	41.3	55.9	64.4	69.1	68.0	57.0	43.3	24.1	9.7	39.3
Cooperstown	5.0	12.8	25.5	41.5	55.6	64.3	68.9	67.2	56.7	43.9	24.9	10.8	39.8
Fargo Hector AP	6.8	14.1	27.2	43.5	57.4	66.0	70.6	69.0	58.0	45.3	27.0	12.5	41.5
Hillsboro 3 N	5.7	12.8	25.5	42.3	56.9	65.4	70.1	68.5	57.4	44.6	26.3	12.2	40.6
Sharon	4.7	12.4	25.0	41.5	55.6	63.7	68.1	66.9	56.6	43.8	24.7	10.2	39.4
Valley City 3 NNW	5.7	12.9	25.5	41.0	55.1	63.8	68.5	66.6	56.1	43.7	26.0	11.9	39.7
EAST CENTRAL	5.5	13.1	25.8	41.9	56.0	64.6	69.2	67.5	56.8	44.1	25.6	11.4	40.1
Amidon	15.5	22.5	31.7	43.9	55.5	64.7	70.9	70.1	58.4	45.9	30.0	19.3	44.0
Beach	15.2	22.0	31.5	43.5	54.9	64.1	69.8	69.0	58.1	45.1	29.4	19.1	43.5
Bowman	14.6	20.9	29.9	41.9	53.6	63.1	69.4	68.3	56.6	44.2	28.5	18.1	42.4
Dickinson Exp Station	12.0	18.9	28.7	41.3	53.4	62.4	68.1	67.3	55.4	43.3	27.3	16.2	41.2
Fairfield	10.3	17.4	27.6	41.2	53.3	62.3	68.2	67.2	56.1	43.4	26.4	14.8	40.7
Mott	12.1	19.4	28.9	41.5	54.2	63.5	69.4	67.9	56.4	43.9	27.6	16.4	41.8
New England	14.2	21.2	30.4	42.8	54.9	64.0	69.5	68.5	57.1	44.9	28.5	18.0	42.8
Richardton Abbey	13.5	20.4	30.3	43.4	55.7	64.3	70.0	68.9	57.9	45.6	28.8	17.4	43.0
Trotters 3 SSE	13.5	20.7	30.7	43.3	54.7	63.5	69.3	68.5	56.9	44.8	28.2	17.2	42.6
SOUTHWEST	13.6	20.7	30.1	42.3	54.0	63.2	69.0	67.9	56.4	44.2	28.2	17.4	42.3
Almont	11.4	19.2	29.8	43.8	56.4	64.8	70.0	68.9	58.1	45.4	28.1	15.7	42.6
Bismarck Municipal AP	10.2	18.1	29.7	43.3	56.0	64.7	70.4	69.0	57.7	45.2	28.0	15.2	42.3
Breien	11.0	18.8	30.3	44.2	56.5	65.3	70.7	69.6	58.5	45.4	28.3	15.8	42.9
Fort Yates 4 SW	13.4	20.6	30.7	44.6	57.4	66.7	72.5	71.1	60.0	47.6	30.1	17.9	44.4
Heart Butte Dam	11.2	18.4	28.5	42.4	55.1	64.4	70.0	68.7	57.5	45.0	28.2	16.4	42.2
Mandan Exp Station	10.0	17.2	28.5	42.7	55.7	64.6	70.2	68.7	57.3	44.7	27.9	15.1	41.9
New Salem 5 NW	8.8	15.9	27.3	41.6	54.8	63.5	69.1	67.8	57.2	43.7	26.0	13.4	40.8
Pretty Rock	13.5	20.6	30.0	43.0	55.3	64.4	70.3	69.3	58.2	45.7	28.8	17.8	43.1
SOUTH CENTRAL	10.5	17.9	28.8	42.5	55.3	64.3	69.9	68.4	57.2	44.6	27.4	15.3	41.8
Ashley	9.6	16.8	28.5	43.4	56.5	65.5	71.2	69.3	58.3	45.2	27.4	14.6	42.2
Forman 5 SSE	7.8	15.1	27.7	43.5	57.0	65.8	71.0	69.3	58.3	45.4	27.9	13.9	41.9
Fullerton 1 ESE	9.6	17.0	29.1	44.4	57.5	66.0	71.2	69.4	59.1	46.2	27.9	14.5	42.7
Gackle	8.9	15.9	27.4	43.0	56.5	65.4	70.7	69.2	58.4	45.6	27.1	13.8	41.8
LaMoure	7.1	14.6	27.1	42.4	55.8	64.8	69.9	67.6	56.8	44.1	26.6	13.2	40.8
Lisbon	6.9	13.8	26.4	42.1	55.9	65.3	70.5	68.6	57.1	44.4	27.1	13.3	41.0
Napoleon	8.3	15.1	27.0	41.9	54.8	63.9	69.5	68.2	57.0	44.3	26.7	13.5	40.9
Wahpeton 3 N	8.7	16.0	28.8	45.3	59.3	67.8	72.2	70.3	60.0	47.3	28.9	14.6	43.3
SOUTHEAST	8.4	15.7	27.9	43.0	56.1	65.1	70.3	68.3	57.5	44.8	27.2	13.9	41.5
STATE	7.8	15.3	26.8	41.7	54.9	63.8	68.7	67.3	56.2	43.7	26.1	13.0	40.4

Source: National Climatic Data Center