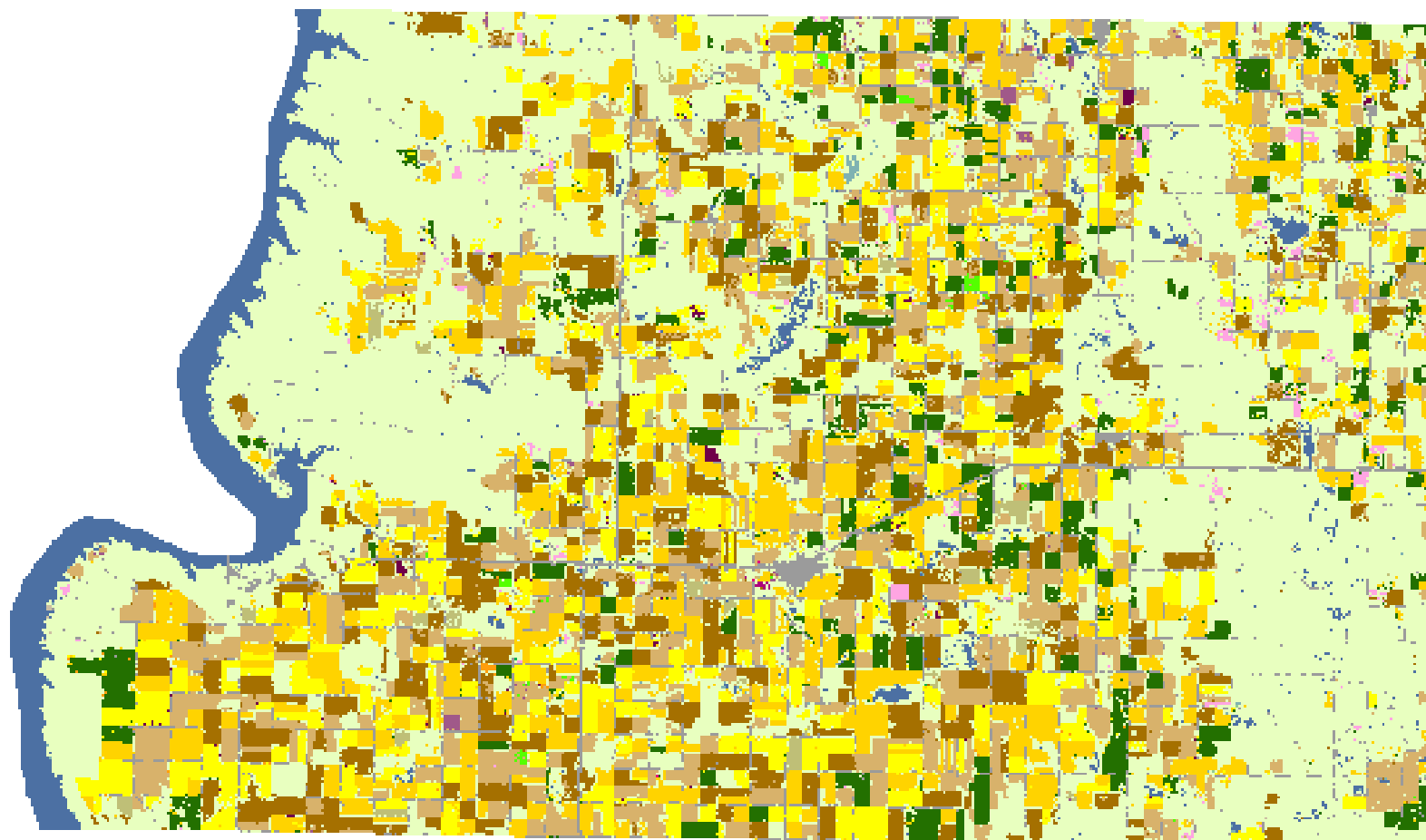
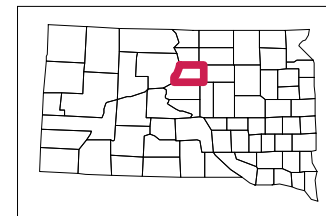


# 2008 Potter County, South Dakota



## Land Cover Categories

### Agriculture

- Pasture/Grass
- Corn
- Soybeans
- Winter Wheat
- Spring Wheat
- Alfalfa
- Sunflowers
- Fallow/Idle Cropland
- Millet
- Sorghum
- Oats
- Barley
- Peas
- Safflower
- Dry Beans
- Durum Wheat
- Other Crops
- Seed/Sod Grass
- Other Small Grains
- Rye
- Flaxseed
- Lentils
- Clover/Wildflowers
- Sugarbeets
- W. Wht./Soy. Dbl. Crop.

### Non-Agriculture

- Woodland
- Urban/Developed
- Water
- Wetlands
- Barren
- Shrubland

