



# Texas Crop Progress and Condition

Southern Plains Regional Field Office  
Post Office Box 70 Austin, Texas 78767  
(800) 626-3142 · FAX (855) 270-2725 · [www.nass.usda.gov/tx](http://www.nass.usda.gov/tx)

**Issue: TX-CW2317**

**Weekly Summary for June 26-July 2**

**Released: July 5, 2017**

## Crop Progress

Stage	Percent of Acreage			
	Current	Prev. Week	Prev. Year	5 Year Avg
<b>Corn</b>				
Silked	63	56	52	62
Dough	48	40	44	44
Dented	35	25	35	29
<b>Cotton</b>				
Squaring	35	29	26	31
Setting Bolls	15	9	9	9
<b>Peanuts</b>				
Pegging	15	8	22	15
<b>Rice</b>				
Headed	56	29	47	35
<b>Sorghum</b>				
Headed	68	59	60	58
Coloring	47	41	39	43
Mature	27	22	27	26
Harvested	12	4	9	8
<b>Soybeans</b>				
Blooming	53	50	43	45
<b>Sunflowers</b>				
Planted	90	88	92	94
<b>Winter Wheat</b>				
Harvested	93	87	93	85
<b>Oats</b>				
Harvested	95	90	94	95

Widespread rain storms last week helped keep temperatures slightly cooler than the previous week. The High Plains, Central Texas and areas of East Texas received between 0.5 and 2.0 inches of rainfall, with a few scattered areas up to 5.0 inches. Isolated areas of the Coastal Bend and the Upper Coast reported over 4.0 inches of rain, while some areas of South East Texas received upwards of 6.0 inches. There were 5.4 days suitable for fieldwork.

**Small Grains:** The 2017 wheat harvest was in the books for most of the state. Some areas of the Northern High Plains continued harvest between storms

**Row Crops:** Cotton producers in some areas of the Northern High Plains were spraying for weeds, while others were fertilizing fields. Storms in the Northern Low Plains damaged cotton in some areas and slowed planting for others. Cotton was emerging in the Southern Low Plains. Cotton in the Trans-Pecos was in the bloom stage, while cotton in South Texas and South Central Texas was setting bolls. Some corn fields in the Southern High Plains were showing heat stress. Corn silage harvest continued in the Cross Timbers. Corn was maturing and nearing harvest in the Upper Coast and South Central Texas. Sorghum planting neared completion in the Northern High Plains. Harvest was underway in the Upper Coast and the Lower Valley.

**Fruit, Vegetable and Specialty Crops:** Farmers in North East Texas were harvesting tomatoes, squash, watermelons and peas among other summer vegetables.

**Livestock, Range and Pasture:** Livestock was mostly in good condition across the state. Dry pasture conditions were a concern for livestock grazing in some areas of the Southern High Plains. Pasture and range condition was mostly fair to good. Pastures responded well to recent showers across many areas of the state. Several wildfires were set off by lightning in the Northern Low Plains. Hay was damaged by the wildfires, but no additional crop losses were reported.

### Crop Condition

Crop	Percent of Acreage					Index <sup>1</sup>	
	Excellent	Good	Fair	Poor	Very Poor	2017	2016
Corn	10	60	24	5	1	81	82
Cotton	8	33	43	13	3	68	73
Peanuts	0	56	44	0	0	77	80
Rice	17	42	40	1	0	81	76
Sorghum	8	44	46	2	0	76	81
Soybeans	21	43	32	4	0	82	78
Wheat	3	33	49	14	1	66	69
Oats	7	40	34	15	4	68	64
Range and Pasture	8	48	34	8	2	--	--

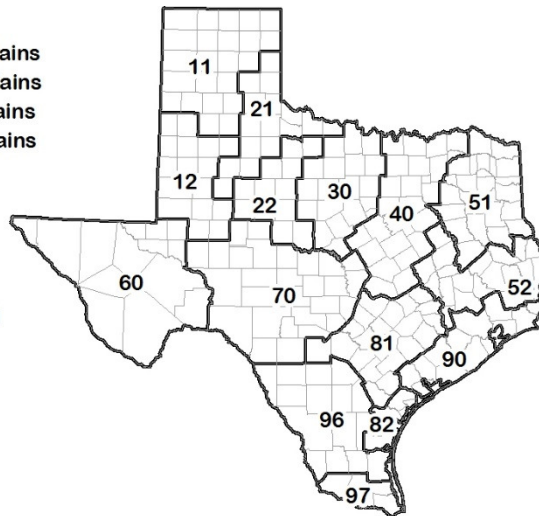
<sup>1</sup> The formula for the condition index is  $I = (5V + 25P + 60F + 90G + 110E)/100$  where I = crop condition index and V, P, F, G, E = percentage of crop rated very poor, poor, fair, good, excellent.

### Soil Moisture and Days Suitable by District

District	Topsoil Moisture Condition by District				Subsoil Moisture Condition by District				Days Suitable for Fieldwork
	Percentage of Acreage				Percentage of Acreage				
	Very Short	Short	Adequate	Surplus	Very Short	Short	Adequate	Surplus	
11	1	41	54	4	2	35	63	0	5.1
12	5	32	52	11	2	48	41	9	4.3
21	32	22	46	0	8	28	64	0	6.7
22	0	49	46	5	0	43	55	2	6.1
30	2	23	69	6	4	24	66	6	5.7
40	2	12	73	13	1	14	63	22	5.1
51	0	20	71	9	1	26	63	10	6.8
52	3	39	48	10	3	34	54	9	6.8
60	15	27	58	0	16	28	56	0	6.6
70	7	40	52	1	8	38	53	1	6.4
81	4	43	45	8	2	53	38	7	5.6
82	100	0	0	0	50	50	0	0	7.0
90	0	1	76	23	0	1	76	23	2.3
96	14	54	32	0	27	40	33	0	6.2
97	63	12	25	0	62	15	23	0	6.8
State	9	30	54	7	7	33	53	7	5.4

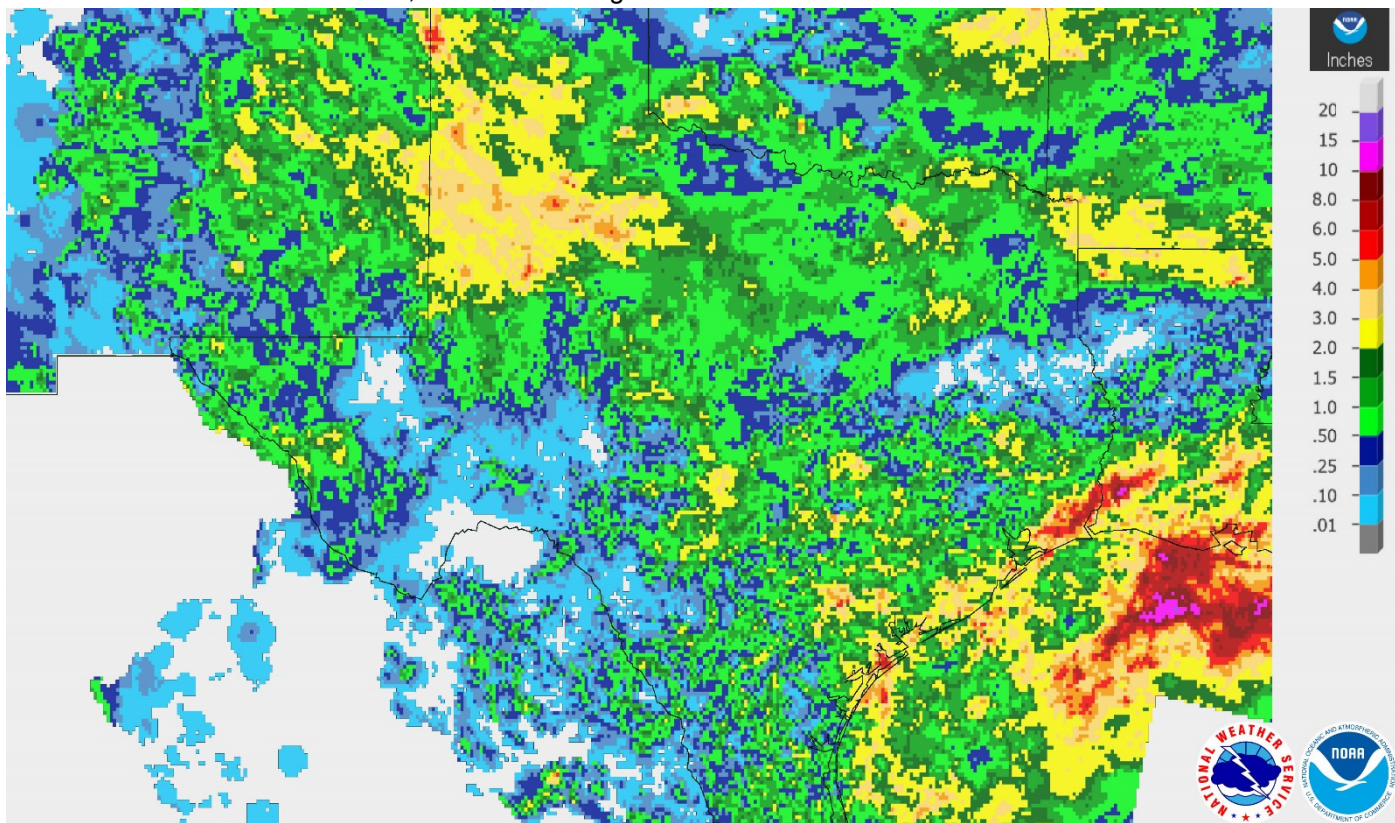
### Texas Agricultural Districts

- 11 Northern High Plains
- 12 Southern High Plains
- 21 Northern Low Plains
- 22 Southern Low Plains
- 30 Cross Timbers
- 40 Blacklands
- 51 North East
- 52 South East
- 60 Trans-Pecos
- 70 Edwards Plateau
- 81 South Central
- 82 Coaster Bend
- 90 Upper Coast
- 96 South
- 97 Lower Valley



## Seven Day Observed Regional Precipitation, July 2, 2017.

Source: National Weather Service, [www.nws.noaa.gov](http://www.nws.noaa.gov)



## Drought Monitor, Valid June 27, 2017.

Source: National Drought Mitigation Center, a partnership with USDA, U.S. Department of Commerce/NOAA, <http://droughtmonitor.unl.edu>

