



# Texas Crop Progress and Condition

Southern Plains Regional Field Office  
Post Office Box 70 Austin, Texas 78767  
(800) 626-3142 · FAX (855) 270-2725 · [www.nass.usda.gov/tx](http://www.nass.usda.gov/tx)

**Issue: TX-CW2518**

**Weekly Summary for August 6-August 12**

**Released: August 13, 2018**

Scattered showers were experienced across the state. Areas of the Edwards Plateau on through to the Blacklands and East Texas observed rainfall between of 2.0 to 4.0 inches, with isolated areas getting upwards of 5.0 inches. Up along the plains region precipitation reached between 0.25 to 1.5 inches. Throughout the state temperatures averaged in the low 80's, with some highs reaching 100.

**Small Grains:** Small grain producers in the High Plains, the Blacklands and East Texas continued field preparations for 2019 crops.

**Row Crops:** Dryland cotton in the Plains benefited little from recent precipitation, while cotton under irrigation continued to progress well. Meanwhile, cotton harvest pressed on in the Coastal Bend, South Texas and the Lower Valley. Corn harvest continued in the Blacklands, South Central Texas, the Upper Coast and South Texas. Soybean and rice harvest progressed in areas of the Upper Coast.

**Fruit, Vegetable and Specialty Crops:** Pecans were progressing well along areas of the Cross Timbers, Trans-Pecos, and South Texas. Reports continued of nut casebearer causing harm to pecan trees in the Trans-Pecos.

**Livestock, Range and Pasture:** Supplemental feeding of livestock persisted in the Plains, the Cross Timbers, the Blacklands, South Central, and South Texas. Range and pasture condition varied across the state. Areas of the Northern High Plains, Trans-Pecos and the Lower Valley reported improving conditions. While in the Cross Timbers, Southern Low Plains, South Central and South Texas reported continued to decline.

### Crop Progress

Stage	Percent of Acreage			
	Current	Prev. Week	Prev. Year	5 Year Avg
<b>Corn</b>				
Silked	97	92	100	98
Dough	91	86	70	82
Dented	79	70	61	63
Mature	52	51	57	53
Harvested	48	30	40	34
<b>Cotton</b>				
Squaring	95	90	96	97
Setting Bolls	71	47	71	72
Bolls Opening	17	14	13	12
Harvested	6	2	3	1
<b>Peanuts</b>				
Pegging	80	72	78	89
Mature	3	NA	NA	NA
<b>Rice</b>				
Headed	100	99	100	98
Harvested	44	23	50	36
<b>Sorghum</b>				
Headed	87	86	88	87
Coloring	77	76	67	73
Mature	61	60	57	63
Harvested	58	57	51	47
<b>Soybeans</b>				
Blooming	97	95	92	89
Setting Pods	77	65	85	71
Dropping Leaves	22	14	24	10
Harvested	3	NA	NA	NA
<b>Sunflowers</b>				
Harvested	55	48	29	20

### Crop Condition

Crop	Percent of Acreage					Index <sup>1</sup>	
	Excellent	Good	Fair	Poor	Very Poor	2018	2017
Corn	2	27	35	24	12	54	87
Cotton	3	17	28	29	23	44	70
Peanuts	1	50	44	5	0	74	83
Rice	4	48	45	3	0	74	83
Sorghum	5	18	39	26	12	52	85
Soybeans	8	14	58	12	8	60	77
Range and Pasture	1	11	31	34	23	-	-

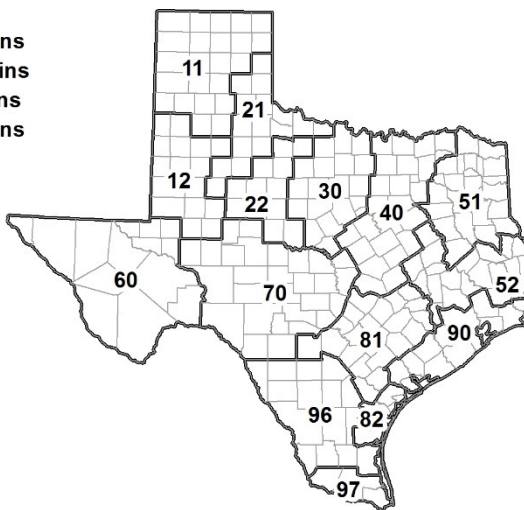
<sup>1</sup> The formula for the condition index is  $I = (5V + 25P + 60F + 90G + 110E)/100$  where I = crop condition index and V, P, F, G, E = percentage of crop rated very poor, poor, fair, good, excellent.

### Soil Moisture and Days Suitable by District

	Topsoil Moisture Condition by District				Subsoil Moisture Condition by District				Days Suitable for Fieldwork
	Percentage of Acreage				Percentage of Acreage				
	Very Short	Short	Adequate	Surplus	Very Short	Short	Adequate	Surplus	
11	29	43	28	0	20	51	29	0	6.8
12	9	42	49	0	39	41	18	2	6.0
21	63	24	13	0	59	27	14	0	6.7
22	41	29	25	5	44	37	19	0	5.7
30	52	34	13	1	43	41	15	1	5.9
40	65	27	8	0	50	34	16	0	5.2
51	44	46	10	0	48	39	13	0	6.5
52	24	43	28	5	20	48	29	3	6.5
60	25	21	54	0	19	36	45	0	6.5
70	25	27	46	2	55	41	4	0	5.2
81	38	54	8	0	24	65	11	0	6.5
82	22	32	41	5	7	39	48	6	6.5
90	4	33	62	1	4	27	69	0	5.3
96	46	41	13	0	50	32	18	0	6.8
97	21	48	31	0	21	48	31	0	7.0
State	33	38	28	1	35	41	23	1	6.2

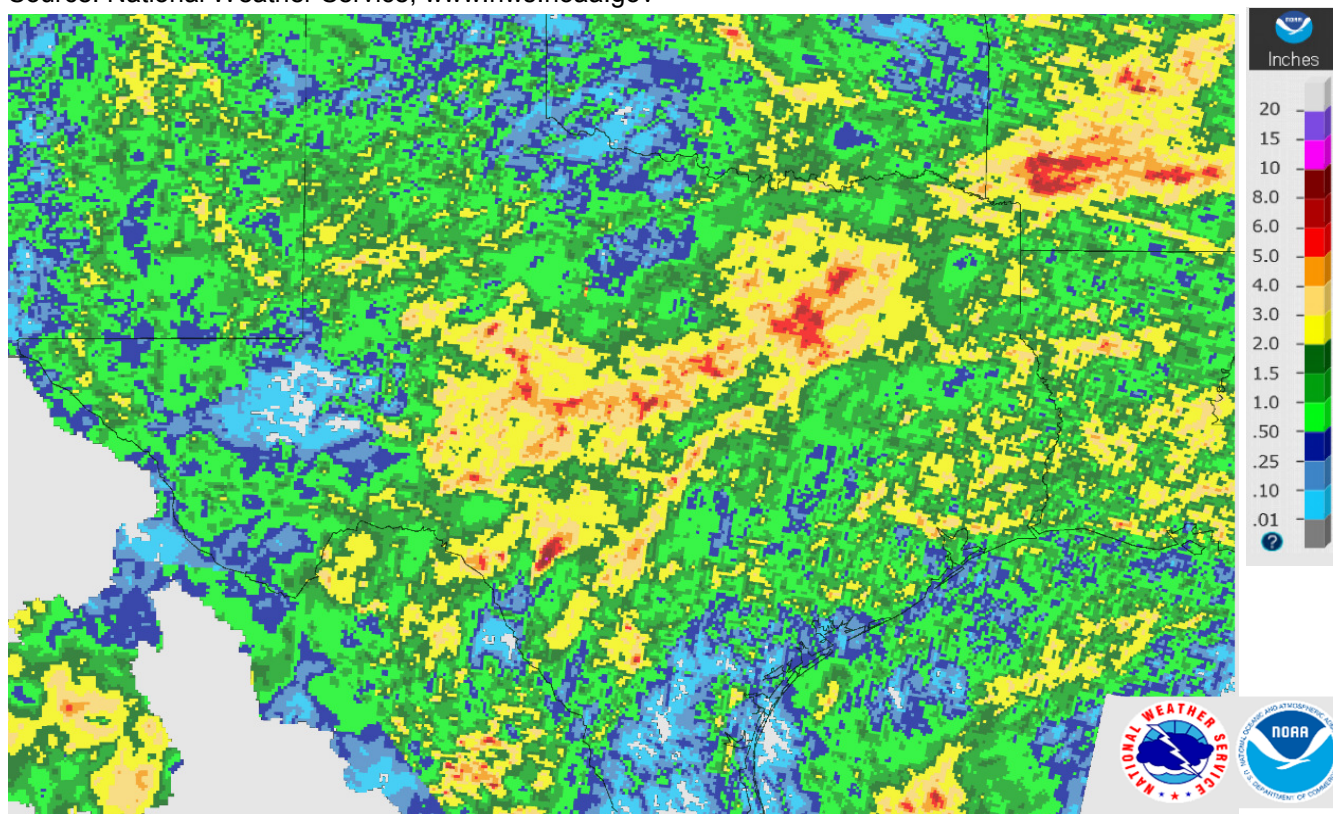
### Texas Agricultural Districts

- 11 Northern High Plains
- 12 Southern High Plains
- 21 Northern Low Plains
- 22 Southern Low Plains
- 30 Cross Timbers
- 40 Blacklands
- 51 North East
- 52 South East
- 60 Trans-Pecos
- 70 Edwards Plateau
- 81 South Central
- 82 Coastal Bend
- 90 Upper Coast
- 96 South
- 97 Lower Valley



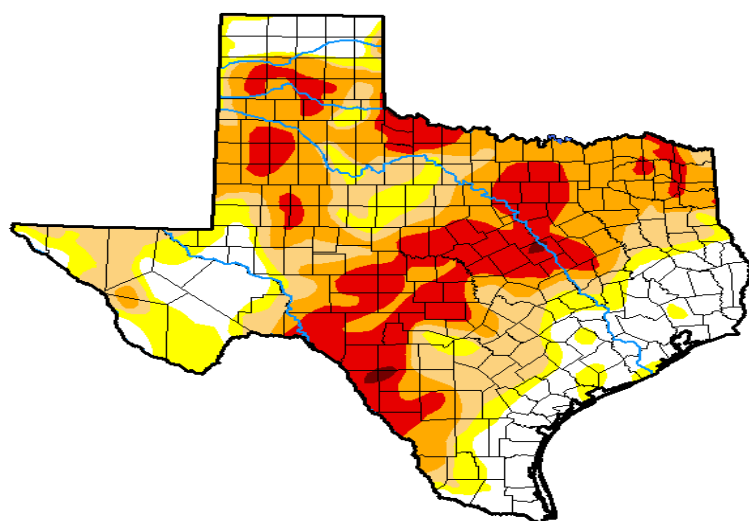
## Seven Day Observed Regional Precipitation, August 12, 2018.

Source: National Weather Service, [www.nws.noaa.gov](http://www.nws.noaa.gov)



Drought Monitor, Valid August 7, 2018.

## U.S. Drought Monitor Texas



**August 7, 2018**

(Released Thursday, Aug. 9, 2018)

Valid 8 a.m. EDT

Drought Conditions (Percent Area)

	None	D0-D4	D1-D4	D2-D4	D3-D4	D4
<b>Current</b>	21.55	78.45	63.94	45.45	19.43	0.36
<b>Last Week</b> 07-31-2018	21.82	78.18	59.26	35.93	8.48	0.00
<b>3 Months Ago</b> 05-08-2018	39.78	60.22	38.80	22.30	12.97	4.61
<b>Start of Calendar Year</b> 01-02-2018	33.37	66.63	33.56	5.94	0.11	0.00
<b>Start of Water Year</b> 09-26-2017	70.54	29.46	4.17	0.04	0.00	0.00
<b>One Year Ago</b> 08-08-2017	79.97	20.03	4.29	0.00	0.00	0.00

### Intensity:

Yellow	D0 Abnormally Dry	Red	D3 Extreme Drought
Orange	D1 Moderate Drought	Dark Red	D4 Exceptional Drought
Dark Orange	D2 Severe Drought		

The Drought Monitor focuses on broad-scale conditions. Local conditions may vary. See accompanying text summary for forecast statements.

### Author:

Richard Tinker  
CPC/NOAA/NWS/NCEP



<http://droughtmonitor.unl.edu/>

Source: National Drought Mitigation Center, a partnership with USDA, U.S. Department of Commerce/NOAA,  
<http://droughtmonitor.unl.edu>