



## Texas Crop Progress and Condition

Southern Plains Regional Field Office  
Post Office Box 70 Austin, Texas 78767  
(800) 626-3142 · FAX (855) 270-2725 · [www.nass.usda.gov/tx](http://www.nass.usda.gov/tx)

**Issue: TX-CW2719**

**Weekly Summary for July 29-August 4**

**Released: August 5, 2019**

Last week was mostly hot and dry across the state. Drought conditions intensified in South Texas, the High and Low Plains, and the Edwards Plateau. The most notable precipitation was received in the eastern part of the state, ranging from trace amounts to 3 inches. Isolated areas in the Upper Coast received upwards of 5 inches of rain. There were 6.4 days suitable for fieldwork.

**Row Crops:** Cotton conditions improved in the High Plains. Meanwhile cotton was blooming in the Edwards Plateau and opening bolls in South Central Texas. Harvest was underway in South Texas and the Coastal Bend. Corn and sorghum harvests were active in South Texas, the Southern Low Plains, the Edwards Plateau, the Upper Coast and the Blacklands. Some early rice was harvested in the Upper Coast, but the large majority producers were anticipating harvest beginning next week.

**Fruit, Vegetable and Specialty Crops:** Harvest of watermelons and cantaloupes was active in South Texas. Vegetable producers were irrigating their crops in South Texas and East Texas. Some pecan orchards in the Blacklands were experiencing premature nut drop. Aphids were a concern in South Central Texas pecan orchards.

**Livestock, Range and Pasture:** Livestock condition rated mostly fair to good across the state. Some cattle producers were using supplemental feed in South Texas and the Southern Low Plains. Livestock and range condition were declining in the Northern Low Plains due to lack of moisture and triple digits temperatures. Pasture and range condition declined last week throughout most of the state and was rated mostly fair to good.



**2017 CENSUS OF AGRICULTURE**

**RESULTS NOW AVAILABLE**

[www.nass.usda.gov/AgCensus](http://www.nass.usda.gov/AgCensus)

USDA  United States Department of Agriculture  
National Agricultural Statistics Service

### Crop Progress

Stage	Percent of Acreage			
	Current Week	Previous Week	Previous Year	5 Year Average
<b>Corn</b>				
Silked	95	89	92	96
Dough	74	65	84	78
Dented	62	53	69	62
Mature	31	N/A	50	47
<b>Cotton</b>				
Squaring	94	83	89	91
Setting Bolls	50	34	45	50
Bolls Opening	14	10	14	11
<b>Peanuts</b>				
Pegging	63	32	71	71
<b>Rice</b>				
Headed	94	86	98	94
Harvested	8	4	21	18
<b>Sorghum</b>				
Headed	82	79	85	86
Coloring	71	70	75	70
Mature	63	45	60	60
Harvested	45	38	56	42
<b>Soybeans</b>				
Blooming	79	75	93	84
Setting Pods	60	48	63	63
Dropping Leaves	5	N/A	13	8
<b>Sunflowers</b>				
Harvested	34	27	48	20

### Crop Condition

Crop	Percent of Acreage					Index <sup>1</sup>	
	Excellent	Good	Fair	Poor	Very Poor	2019	2018
Corn	13	50	33	3	1	80	57
Cotton	9	37	36	17	1	69	46
Peanuts	7	79	13	1	0	87	72
Rice	13	61	23	3	0	84	72
Sorghum	27	41	25	7	0	83	53
Soybeans	11	33	42	8	6	69	61
Range and Pasture	6	34	36	17	7	--	--

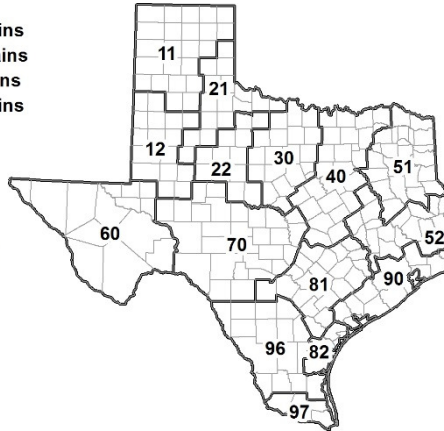
<sup>1</sup> The formula for the condition index is  $I = (5V + 25P + 60F + 90G + 110E)/100$  where I = crop condition index and V, P, F, G, E = percentage of crop rated very poor, poor, fair, good, excellent.

### Soil Moisture and Days Suitable by District

District	Topsoil Moisture Condition by District				Subsoil Moisture Condition by District				Days Suitable for Fieldwork
	Percentage of Acreage				Percentage of Acreage				
	Very Short	Short	Adequate	Surplus	Very Short	Short	Adequate	Surplus	
11	27	53	20	0	14	41	45	0	7.0
12	8	59	33	0	8	51	41	0	5.8
21	31	51	18	0	19	51	30	0	6.1
22	24	58	18	0	2	57	41	0	6.6
30	9	58	33	0	8	30	62	0	6.4
40	24	51	24	1	12	59	29	0	6.5
51	6	35	55	4	9	31	55	5	7.0
52	2	38	53	7	2	27	64	7	6.8
60	15	53	32	0	54	11	35	0	6.6
70	24	44	32	0	6	53	40	1	7.0
81	20	59	21	0	10	60	30	0	6.7
82	48	52	0	0	47	53	0	0	7.0
90	44	28	26	2	10	36	51	3	6.3
96	30	66	4	0	32	67	1	0	6.7
97	9	41	46	4	9	34	46	11	4.1
State	21	52	26	1	12	47	40	1	6.4

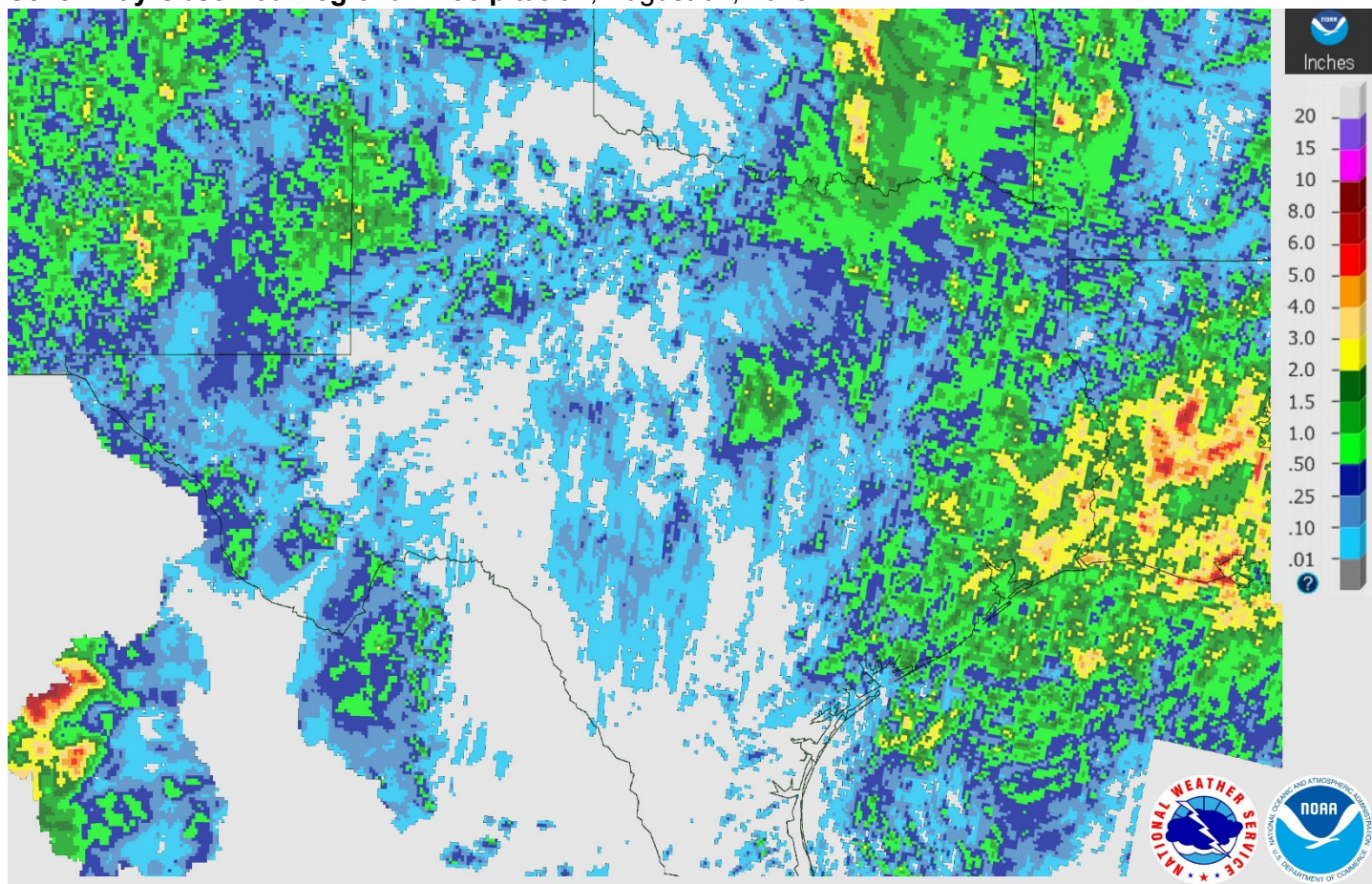
### Texas Agricultural Districts

- 11 Northern High Plains
- 12 Southern High Plains
- 21 Northern Low Plains
- 22 Southern Low Plains
- 30 Cross Timbers
- 40 Blacklands
- 51 North East
- 52 South East
- 60 Trans-Pecos
- 70 Edwards Plateau
- 81 South Central
- 82 Coastal Bend
- 90 Upper Coast
- 96 South
- 97 Lower Valley



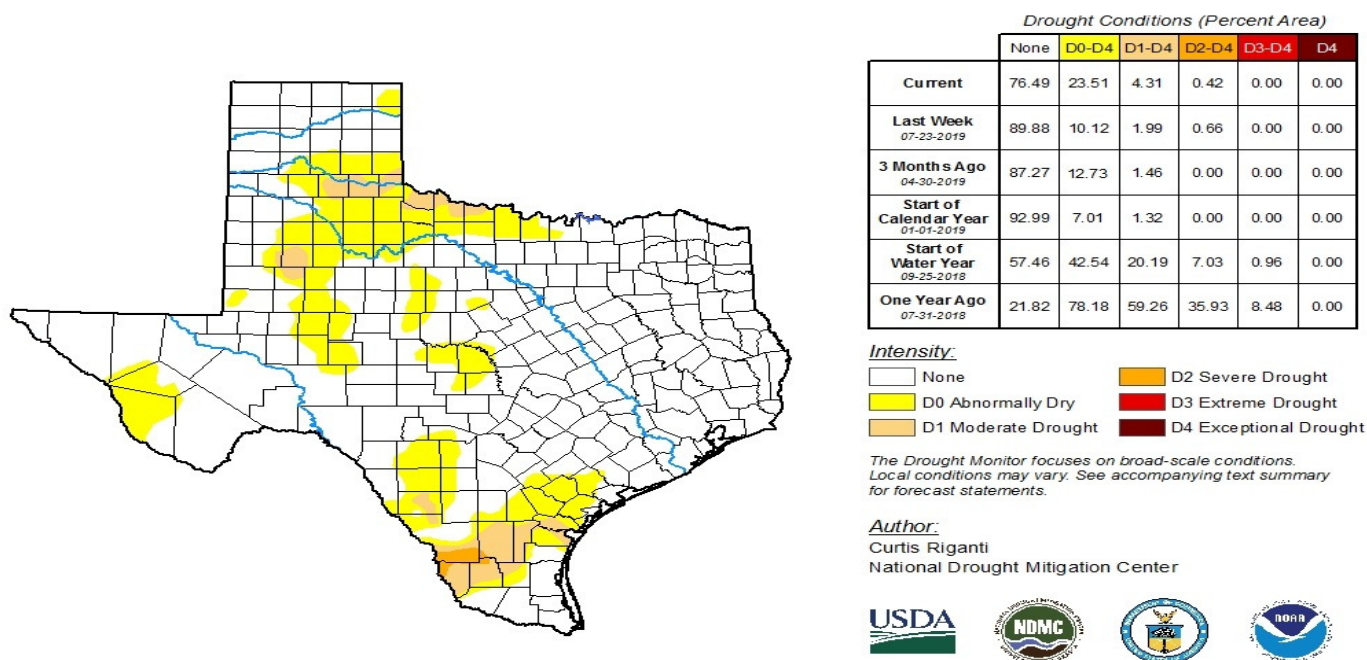


## Seven Day Observed Regional Precipitation, August 04, 2019.



Source: National Weather Service, [www.nws.noaa.gov](http://www.nws.noaa.gov)

## Drought Monitor, Valid July 30, 2019.



Source: National Drought Mitigation Center, a partnership with USDA, U.S. Department of Commerce/NOAA, <http://droughtmonitor.unl.edu>

## Texas Crop Progress and Condition (August 2019)

USDA, National Agricultural Statistics Service, Southern Plains Regional Field Office