



## Texas Crop Progress and Condition

Southern Plains Regional Field Office  
Post Office Box 70 Austin, Texas 78767  
(800) 626-3142 · FAX (855) 270-2725 · [www.nass.usda.gov/tx](http://www.nass.usda.gov/tx)

Issue: TX-CW0422 correction

Weekly Summary for February 7 – February 13

Released: March 5, 2024

Note: This is a revised version for  
Winter Wheat Headed & Oats Headed

A small portion of the state received from trace amounts to upwards of 1.5 inches of precipitation. Isolated areas in the Upper Coast received up to 2.0 inches. Drought conditions range from none to extremely dry with the Northern Plain and Southern Plains being the driest. There was an average of 5.6 days suitable for fieldwork.

**Small Grains:** Winter wheat conditions have not improved for most of the state. Winter wheat headed reached 1 percent, down 1 point from the previous year and down 4 points from normal.

**Row Crops:** Areas of the Coastal Bend are starting to plant corn and sorghum, though some producers are waiting for more moisture.

**Fruit, Vegetable and Specialty Crops:** In the Lower Valley, some vegetables are being harvested and onions look good, with low disease pressure being reported.

**Livestock, Range and Pasture:** Supplemental feeding continued across the state. Topsoil and subsoil conditions are very short due to the lack of moisture. Range and pasture conditions continue to decline, especially for the Northern and Southern Plains areas. Range and pasture conditions were rated poor.

### Crop Progress

Stage	Percent of Acreage			
	Current Week	Previous Week	Previous Year	5 Year Average
<b>Winter Wheat</b> Headed	1	-	2	5
<b>Oats</b> Headed	-	-	5	3

- Represents zero.

### Crop Condition

Crop	Percent of Acreage					Index <sup>1</sup>	
	Excellent	Good	Fair	Poor	Very Poor	2022	2021
Wheat	0	10	23	20	47	30	60
Oats	1	8	22	13	56	28	48
Range and Pasture	1	9	26	33	31	35	39

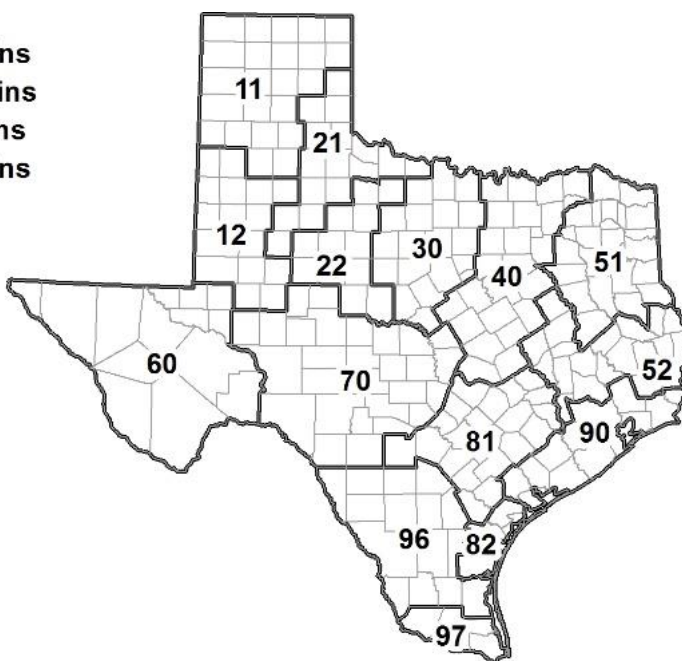
<sup>1</sup> The formula for the condition index is  $I = (5V + 25P + 60F + 90G + 110E)/100$  where I = crop condition index and V, P, F, G, E = percentage of crop rated very poor, poor, fair, good, excellent.

### Soil Moisture and Days Suitable by District

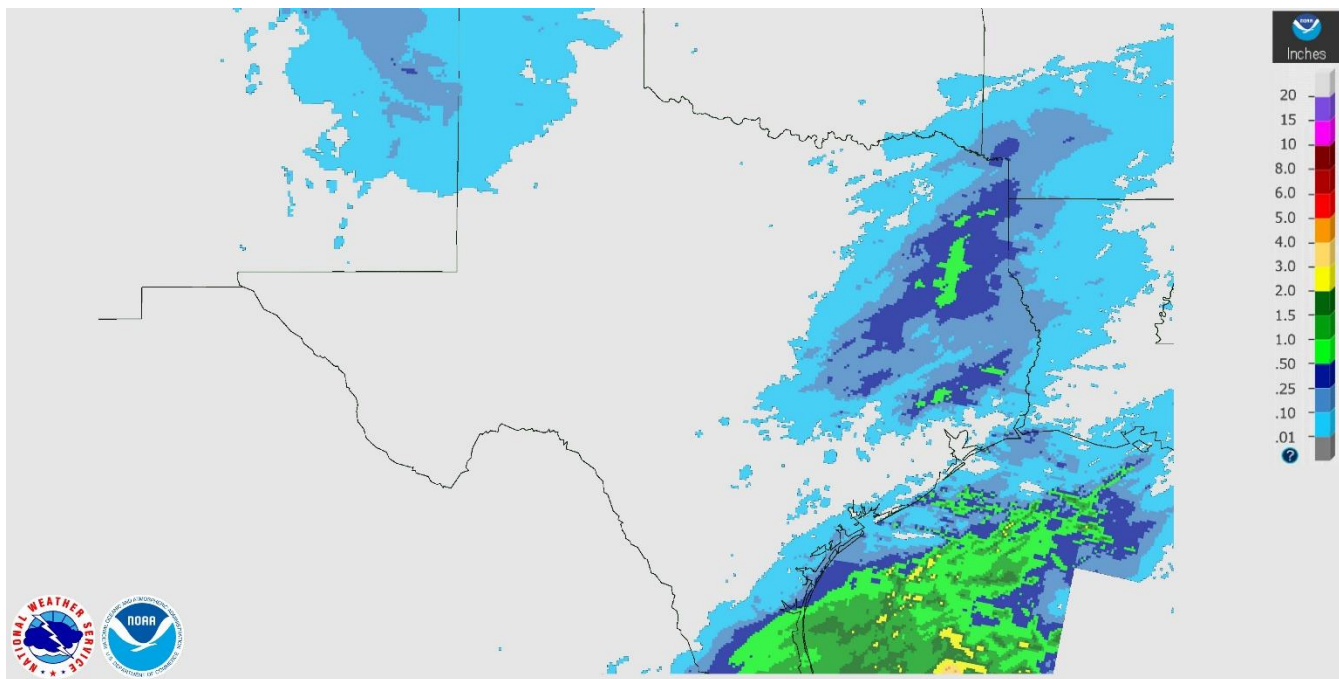
District	Topsoil Moisture Condition by District				Subsoil Moisture Condition by District				Days Suitable for Fieldwork
	Percentage of Acreage				Percentage of Acreage				
	Very Short	Short	Adequate	Surplus	Very Short	Short	Adequate	Surplus	
11	68	32	0	0	68	32	0	0	4.8
12	95	5	0	0	95	5	0	0	6.3
21	47	52	1	0	60	38	2	0	6.7
22	58	28	14	0	73	18	9	0	6.0
30	29	45	26	0	45	42	13	0	5.4
40	18	31	41	10	32	22	42	4	4.8
51	33	35	31	1	38	43	19	0	6.7
52	8	43	47	2	9	44	46	1	6.7
60	21	62	17	0	21	72	7	0	6.9
70	77	14	9	0	59	32	9	0	6.1
81	5	37	58	0	5	22	73	0	6.4
82	30	31	39	0	17	28	55	0	4.7
90	3	5	54	38	3	6	58	33	4.7
96	50	37	12	1	39	49	12	0	5.8
97	5	10	82	3	5	6	87	2	4.7
State	50	27	20	3	54	24	20	2	5.6

### Texas Agricultural Districts

- 11 Northern High Plains
- 12 Southern High Plains
- 21 Northern Low Plains
- 22 Southern Low Plains
- 30 Cross Timbers
- 40 Blacklands
- 51 North East
- 52 South East
- 60 Trans-Pecos
- 70 Edwards Plateau
- 81 South Central
- 82 Coastal Bend
- 90 Upper Coast
- 96 South
- 97 Lower Valley

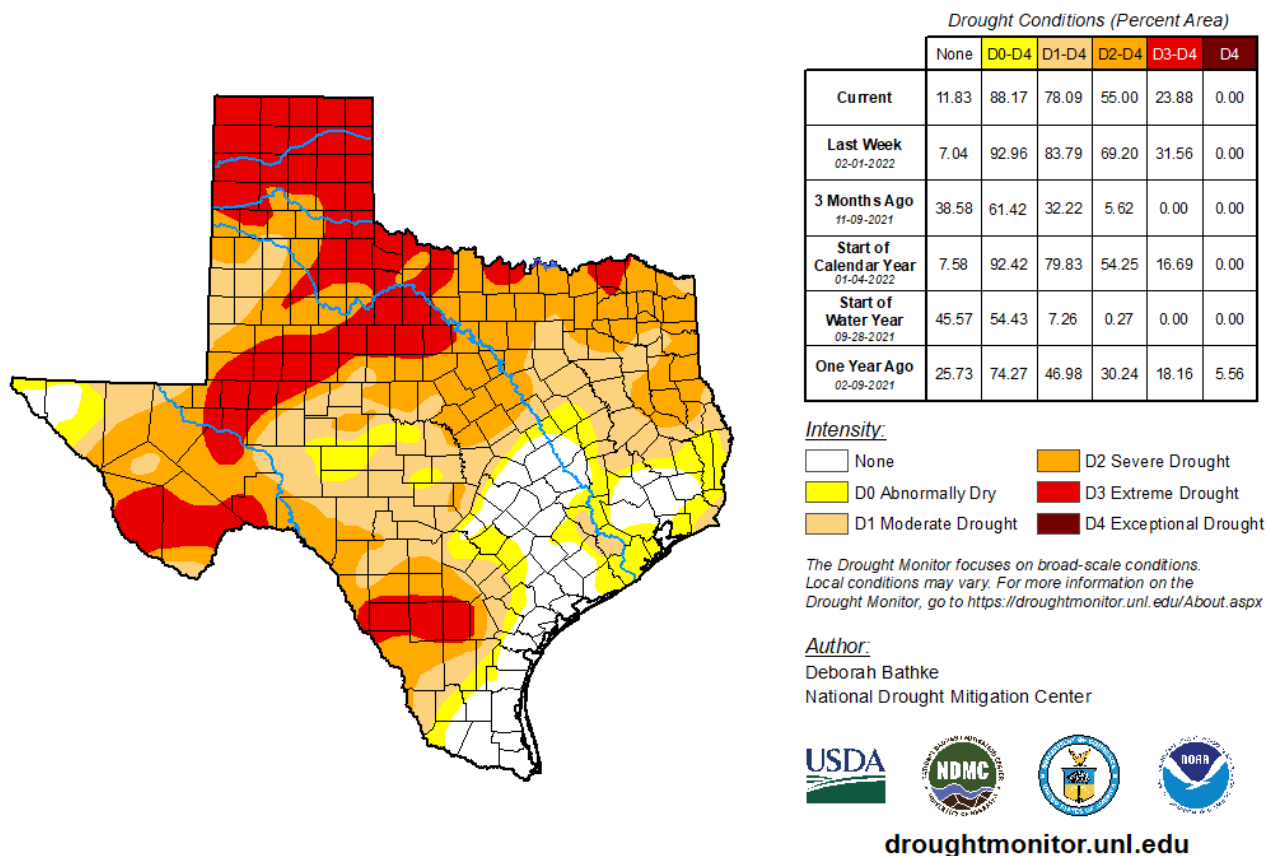


## Seven Day Observed Regional Precipitation, February 13, 2022



Source: National Weather Service, [www.nws.noaa.gov](http://www.nws.noaa.gov)

## Drought Monitor, Valid February 8, 2022.



Source: National Drought Mitigation Center, a partnership with USDA, U.S. Department of Commerce/NOAA, <http://droughtmonitor.unl.edu>