



Texas Crop Progress and Condition

Southern Plains Regional Field Office

Post Office Box 70 Austin, Texas 78767

(800) 626-3142 · FAX (855) 270-2725 · www.nass.usda.gov/tx

Issue:TX-CW0223 correction

Weekly Summary for January 23 - January 29

Released: March 5, 2024

Note: This is a revised version for
Winter Wheat Headed & Oats Headed

Most of the state received from trace amounts up to 3 inches of precipitation this week with areas of the North East Texas and the Upper Coast receiving as much as 6 inches. Drought conditions ranged from none to exceptionally dry, with isolated parts of the Edwards Plateau, South Central Texas, and the Northern High Plains being the driest. There was an average of 5 days suitable for fieldwork.

Small Grains: Winter wheat and oat emergence is virtually complete across the state. Heading has begun across the state. Producers saw growth in wheat and oats across the state. Last week's rain helped with the growth. Winter wheat headed reached 2 percent, down 6 points from normal.

Livestock, Range and Pasture: Supplemental feeding continued. Range and pasture conditions were rated 66 percent poor to very poor.

Crop Progress

| Stage | Percent of Acreage | | | |
|---------------------|--------------------|---------------|---------------|----------------|
| | Current Week | Previous Week | Previous Year | 5 Year Average |
| Winter Wheat | | | | |
| Headed | 2 | - | - | 8 |
| Oats | | | | |
| Headed | - | - | - | - |

(-) Represents zero.

Crop Condition

| Crop | Percent of Acreage | | | | | Index ¹ | |
|-------------------|--------------------|------|------|------|-----------|--------------------|------|
| | Excellent | Good | Fair | Poor | Very Poor | 2023 | 2022 |
| Wheat | 1 | 13 | 34 | 26 | 26 | 28 | 25 |
| Oats | 1 | 7 | 22 | 18 | 52 | 28 | 26 |
| Range and Pasture | 2 | 9 | 23 | 36 | 30 | 35 | 36 |

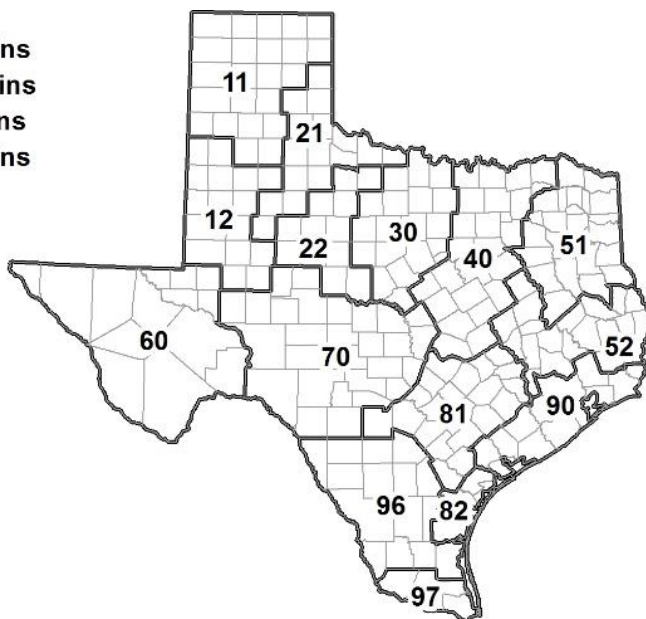
¹ The formula for the condition index is $I = (5V + 25P + 60F + 90G + 110E)/100$ where I = crop condition index and V, P, F, G, E = percentage of crop rated very poor, poor, fair, good, excellent.

Soil Moisture and Days Suitable by District

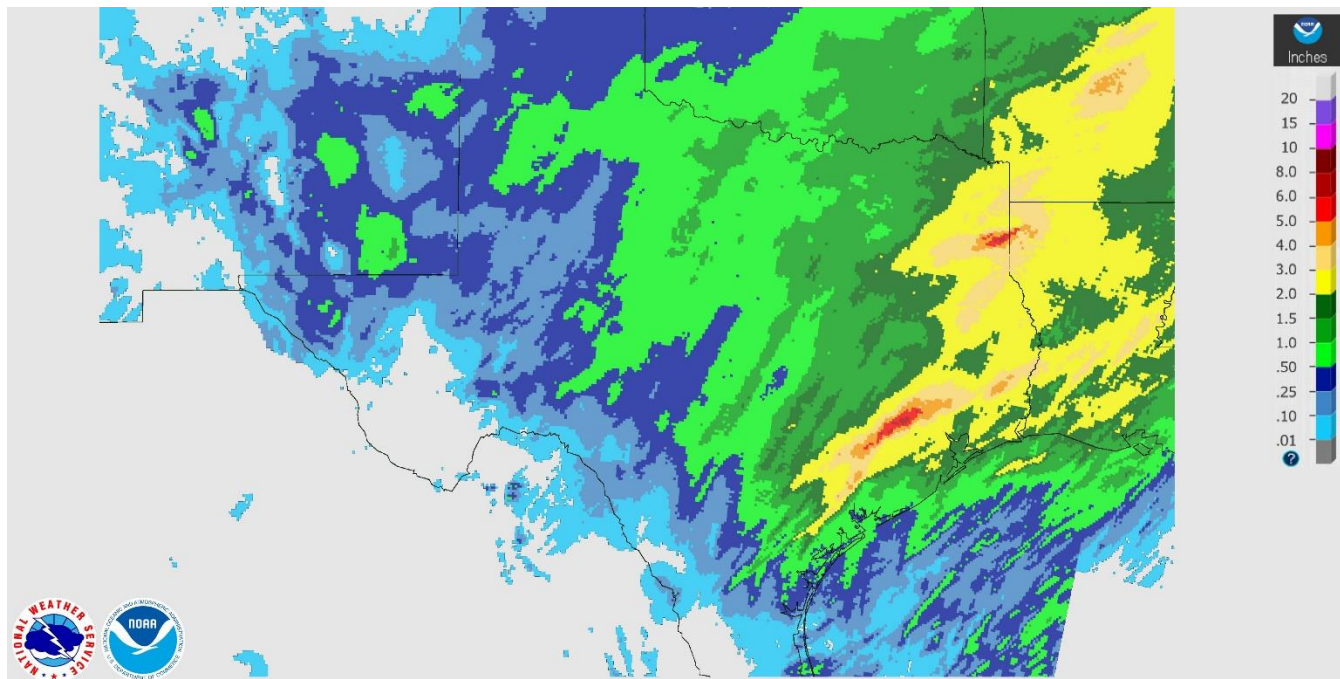
| District | Subsoil Moisture Condition by District | | | | Topsoil Moisture Condition by District | | | | Days Suitable for Fieldwork |
|----------|----------------------------------------|-------|----------|---------|----------------------------------------|-------|----------|---------|-----------------------------|
| | Percentage of Acreage | | | | Percentage of Acreage | | | | |
| | Very Short | Short | Adequate | Surplus | Very Short | Short | Adequate | Surplus | |
| 11 | 46 | 28 | 26 | 0 | 48 | 20 | 32 | 0 | 5.3 |
| 12 | 74 | 23 | 3 | 0 | 55 | 40 | 5 | 0 | 5.1 |
| 21 | 15 | 53 | 28 | 4 | 30 | 28 | 36 | 6 | 4.9 |
| 22 | 39 | 52 | 9 | 0 | 29 | 43 | 28 | 0 | 5.3 |
| 30 | 28 | 49 | 23 | 0 | 30 | 49 | 21 | 0 | 5.5 |
| 40 | 24 | 31 | 45 | 0 | 20 | 28 | 47 | 5 | 3.9 |
| 51 | 3 | 13 | 61 | 23 | 3 | 13 | 53 | 31 | 5.5 |
| 52 | 0 | 6 | 74 | 20 | 0 | 1 | 66 | 33 | 3.7 |
| 60 | 22 | 60 | 15 | 3 | 22 | 61 | 14 | 3 | 6.3 |
| 70 | 32 | 58 | 10 | 0 | 21 | 65 | 14 | 0 | 6.8 |
| 81 | 21 | 48 | 21 | 10 | 22 | 57 | 21 | 0 | 5.3 |
| 82 | 9 | 24 | 64 | 3 | 9 | 16 | 72 | 3 | 5.1 |
| 90 | 0 | 34 | 27 | 39 | 0 | 2 | 20 | 78 | 2.1 |
| 96 | 36 | 48 | 16 | 0 | 38 | 43 | 19 | 0 | 6.4 |
| 97 | 14 | 31 | 55 | 0 | 25 | 40 | 35 | 0 | 7.0 |
| State | 36 | 34 | 26 | 4 | 32 | 32 | 29 | 7 | 5.0 |

Texas Agricultural Districts

- 11 Northern High Plains
- 12 Southern High Plains
- 21 Northern Low Plains
- 22 Southern Low Plains
- 30 Cross Timbers
- 40 Blacklands
- 51 North East
- 52 South East
- 60 Trans-Pecos
- 70 Edwards Plateau
- 81 South Central
- 82 Coastal Bend
- 90 Upper Coast
- 96 South
- 97 Lower Valley

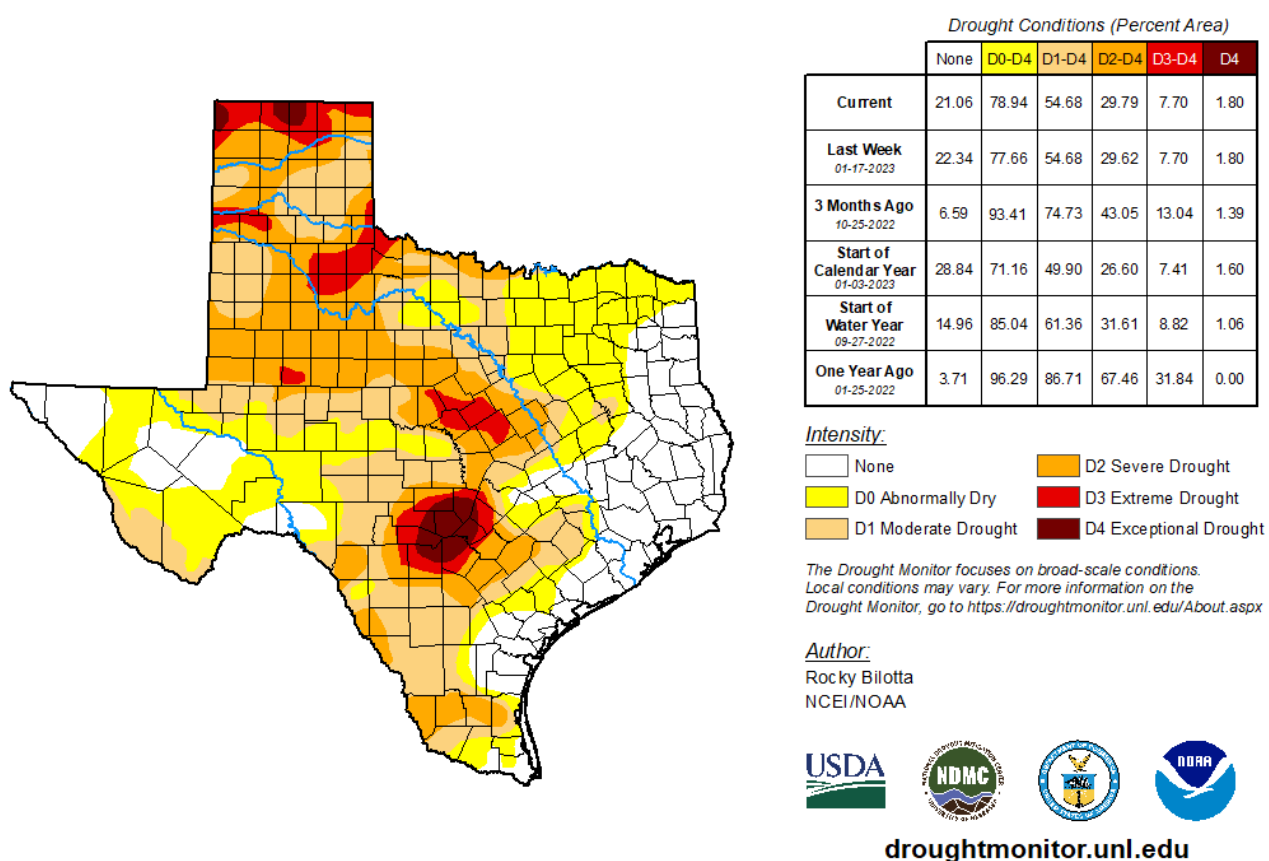


Seven Day Observed Regional Precipitation, January 29, 2023.



Source: National Weather Service, www.nws.noaa.gov

Drought Monitor, Valid January 24, 2023.



Source: National Drought Mitigation Center, a partnership with USDA, U.S. Department of Commerce/NOAA, <http://droughtmonitor.unl.edu>