



Texas Crop Progress and Condition

Southern Plains Regional Field Office
Post Office Box 70 Austin, Texas 78767
(800) 626-3142 · FAX (855) 270-2725 · www.nass.usda.gov/tx

Issue:TX-CW0423 correction

Weekly Summary for February 6 - February 12

Released: March 5, 2024

Note: This is a revised version for
Winter Wheat Headed & Oats Headed

Most of the state received from trace amounts up to 2 inches of precipitation this week with areas of North East Texas and the Blacklands receiving as much as 6 inches. Drought conditions ranged from none to exceptionally dry, with isolated parts of the Edwards Plateau, South Central Texas, the Blacklands, and the Northern High Plains being the driest. There was an average of 5.3 days suitable for fieldwork.

Small Grains: Oat and Wheat heading continued across Texas. Across the state, wheat and oats have struggled due to weather and lack of moisture over the past few months. However, in the Plains and the Blacklands, the increased moisture has helped with crop progress. Winter wheat headed reached 6 percent, 5 points up from the previous year. Wheat condition was rated at 63 percent fair to very poor. Oats headed reached 2 percent, up 2 points from the previous year. Oats condition was rated at 64 percent very poor to poor.

Livestock, Range and Pasture: Producers continued using supplemental feeding across much of the state. Range and pasture conditions were rated 74 percent poor to very poor.

Crop Progress

Stage	Percent of Acreage			
	Current Week	Previous Week	Previous Year	5 Year Average
Winter Wheat Headed	6	4	1	5
Oats Headed	2	1	-	3

- Represents zero.

Crop Condition

Crop	Percent of Acreage					Index ¹	
	Excellent	Good	Fair	Poor	Very Poor	2023	2022
Wheat	0	11	36	26	27	41	28
Oats	1	10	25	25	39	30	29
Range and Pasture	1	6	19	46	28	34	33

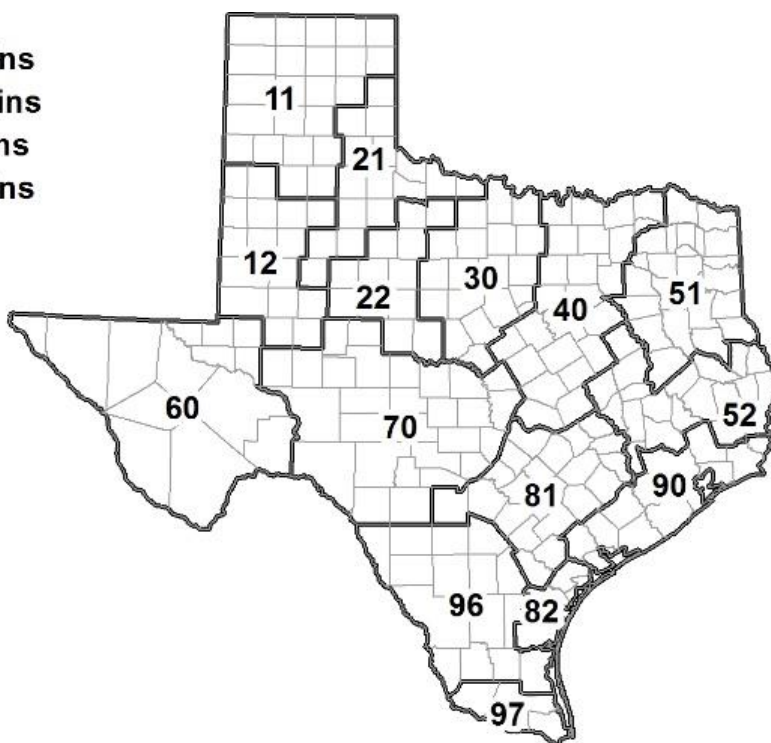
¹ The formula for the condition index is $I = (5V + 25P + 60F + 90G + 110E)/100$ where I = crop condition index and V, P, F, G, E = percentage of crop rated very poor, poor, fair, good, excellent.

Soil Moisture and Days Suitable by District

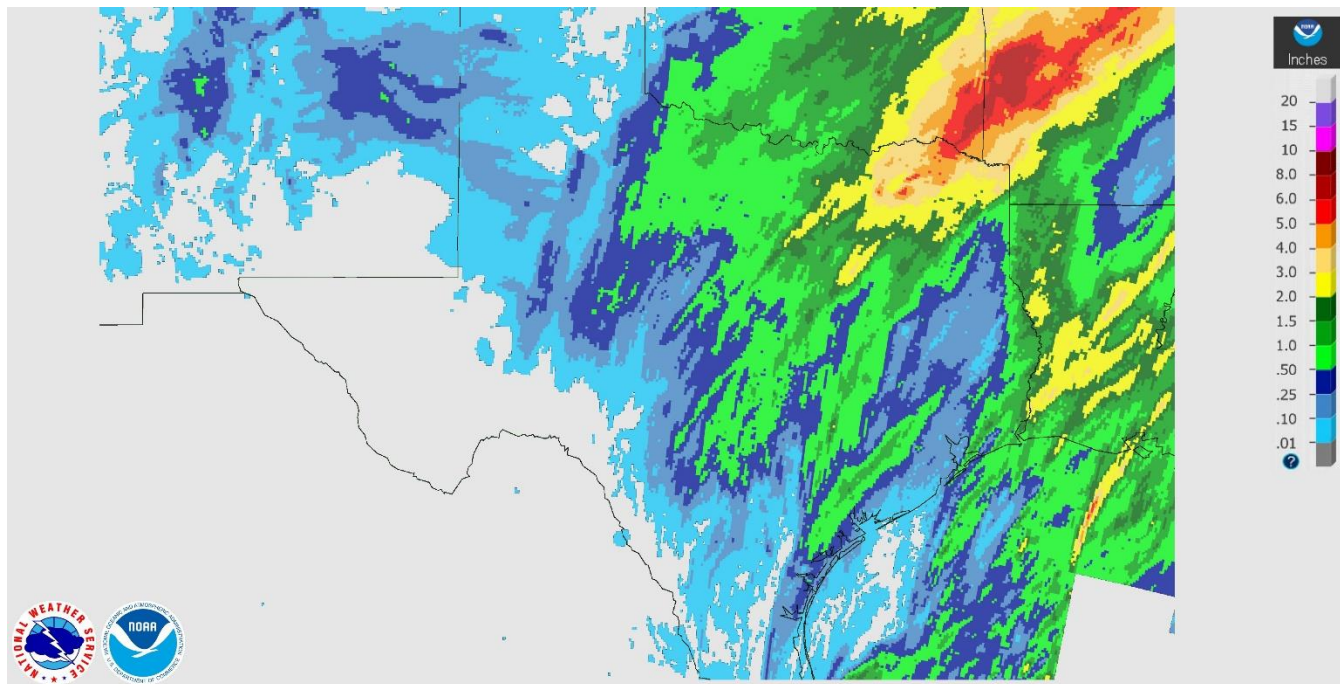
District	Subsoil Moisture Condition by District				Topsoil Moisture Condition by District				Days Suitable for Fieldwork
	Percentage of Acreage				Percentage of Acreage				
	Very Short	Short	Adequate	Surplus	Very Short	Short	Adequate	Surplus	
11	54	32	14	0	53	38	9	0	6.3
12	46	54	0	0	0	66	22	12	6.7
21	8	69	23	0	5	36	59	0	4.5
22	59	41	0	0	38	48	14	0	5.0
30	16	43	41	0	13	37	40	10	4.9
40	12	15	45	28	5	12	58	25	2.2
51	3	6	40	51	3	5	39	53	4.9
52	0	11	74	15	0	12	61	27	4.8
60	0	100	0	0	0	100	0	0	7.0
70	21	33	46	0	8	46	46	0	5.9
81	9	34	51	6	9	19	67	5	4.8
82	100	0	0	0	100	0	0	0	7.0
90	0	2	40	58	0	1	25	74	4.6
96	37	40	23	0	25	59	16	0	6.3
97	3	29	68	0	3	33	64	0	7.0
State	32	35	24	9	20	35	32	13	5.3

Texas Agricultural Districts

- 11 Northern High Plains
- 12 Southern High Plains
- 21 Northern Low Plains
- 22 Southern Low Plains
- 30 Cross Timbers
- 40 Blacklands
- 51 North East
- 52 South East
- 60 Trans-Pecos
- 70 Edwards Plateau
- 81 South Central
- 82 Coastal Bend
- 90 Upper Coast
- 96 South
- 97 Lower Valley

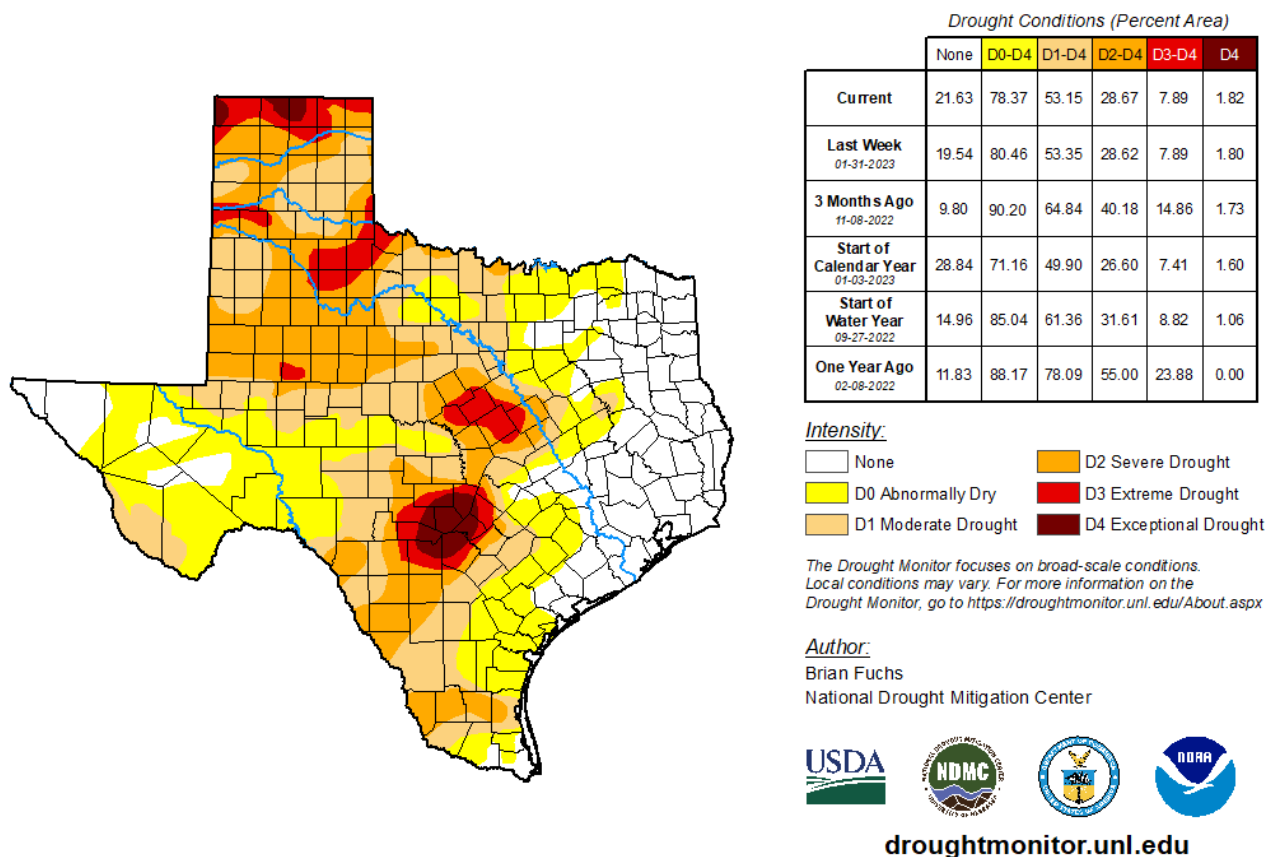


Seven Day Observed Regional Precipitation, February 12, 2023.



Source: National Weather Service, www.nws.noaa.gov

Drought Monitor, Valid February 7, 2023.



Source: National Drought Mitigation Center, a partnership with USDA, U.S. Department of Commerce/NOAA, <http://droughtmonitor.unl.edu>