



## Texas Crop Progress and Condition

Southern Plains Regional Field Office  
Post Office Box 70 Austin, Texas 78767  
(800) 626-3142 · FAX (855) 270-2725 · [www.nass.usda.gov/tx](http://www.nass.usda.gov/tx)

Issue: TX-CW0523 correction Weekly Summary for February 13 - February 19

Released: March 5, 2024

Note: This is a revised version for  
Winter Wheat Headed & Oats Headed

Most of the state experienced high winds and received from trace amounts up to 1 inch of precipitation last week. Areas of South Texas, the Trans Pecos, and the Lower Valley received no rain. Drought conditions ranged from none to exceptionally dry, with isolated parts of the Edwards Plateau, South Central Texas, the Blacklands, and the Northern High Plains being the driest. There was an average of 5.5 days suitable for fieldwork.

Small Grains: Winter wheat condition throughout the state was rated fair to poor. Winter wheat headed reached 8 percent, 6 points up from the previous year. Producers continued to notice stress on the Winter Wheat and Oats crops across the state even with some moisture received. Oats headed reached 4 percent, up 3 points from the previous year. Oats condition was rated fair to very poor.

Livestock, Range and Pasture: Producers continued using supplemental feeding across much of the state. Ranchers noticed pastures are greening up over the past few weeks in South East Texas. Range and pasture condition was rated poor to very poor.

### Crop Progress

Stage	Percent of Acreage			
	Current Week	Previous Week	Previous Year	5 Year Average
Winter Wheat Headed	8	6	2	5
Oats Headed	4	2	1	3

### Condition

Crop	Percent of Acreage					Index <sup>1</sup>	
	Excellent	Good	Fair	Poor	Very Poor	2023	2022
Wheat	2	12	34	29	23	42	39
Oats	3	17	30	20	30	43	33
Range and Pasture	1	7	22	38	32	32	31

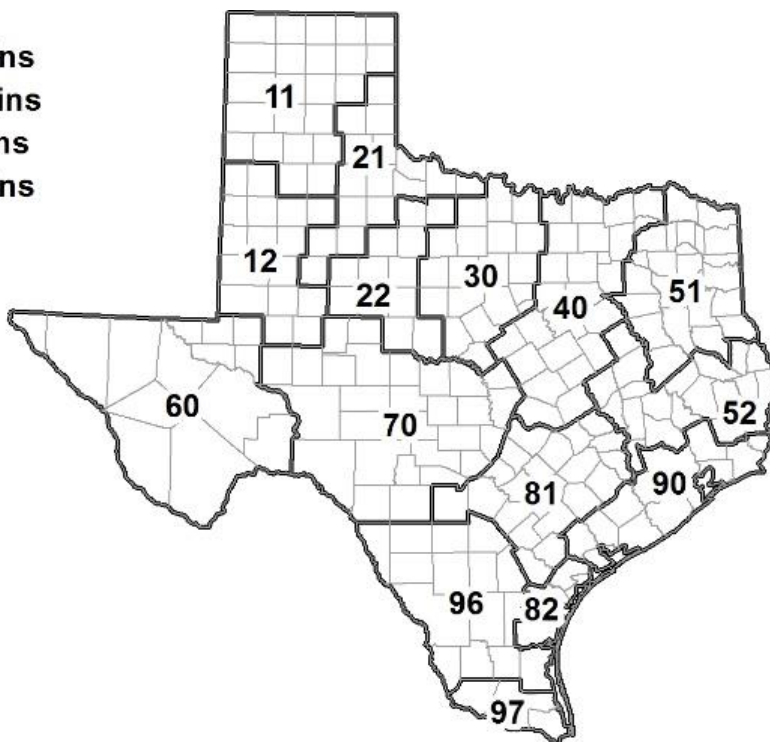
<sup>1</sup> The formula for the condition index is  $I = (5V + 25P + 60F + 90G + 110E)/100$  where I = crop condition index and V, P, F, G, E = percentage of crop rated very poor, poor, fair, good, excellent.

### Soil Moisture and Days Suitable by District

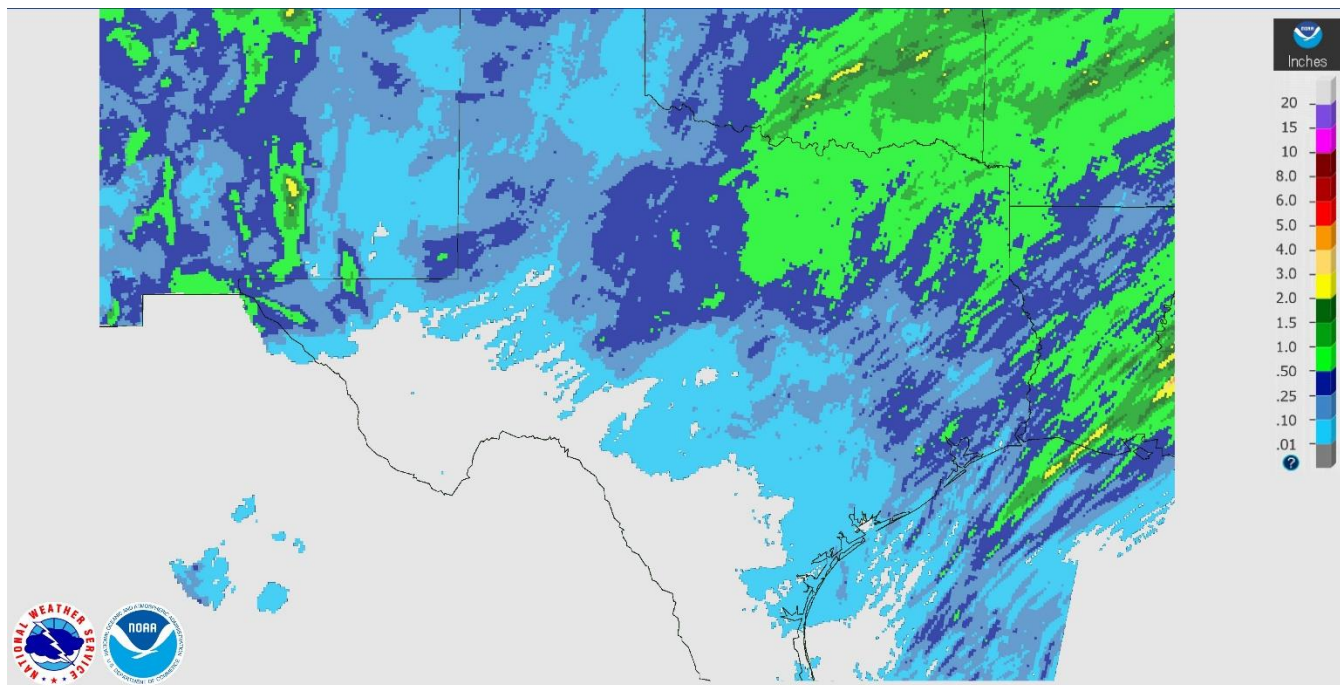
District	Subsoil Moisture Condition by District				Topsoil Moisture Condition by District				Days Suitable for Fieldwork
	Percentage of Acreage				Percentage of Acreage				
	Very Short	Short	Adequate	Surplus	Very Short	Short	Adequate	Surplus	
11	47	43	10	0	55	40	5	0	5.6
12	46	50	4	0	14	73	13	0	7.0
21	20	25	54	1	17	21	61	1	4.6
22	49	44	7	0	28	45	27	0	6.3
30	18	40	42	0	16	34	46	4	5.2
40	5	31	52	12	4	15	69	12	3.0
51	3	5	49	43	2	4	44	50	5.9
52	1	11	68	20	0	11	58	31	5.7
60	11	81	8	0	12	81	7	0	6.2
70	24	36	40	0	14	47	39	0	6.2
81	2	75	23	0	2	47	51	0	6.1
82	66	0	34	0	22	0	71	7	7.0
90	0	30	58	12	0	9	75	16	3.7
96	23	37	40	0	23	62	15	0	5.6
97	3	29	68	0	1	48	51	0	4.8
State	28	40	28	4	20	40	35	5	5.5

### Texas Agricultural Districts

- 11 Northern High Plains
- 12 Southern High Plains
- 21 Northern Low Plains
- 22 Southern Low Plains
- 30 Cross Timbers
- 40 Blacklands
- 51 North East
- 52 South East
- 60 Trans-Pecos
- 70 Edwards Plateau
- 81 South Central
- 82 Coastal Bend
- 90 Upper Coast
- 96 South
- 97 Lower Valley

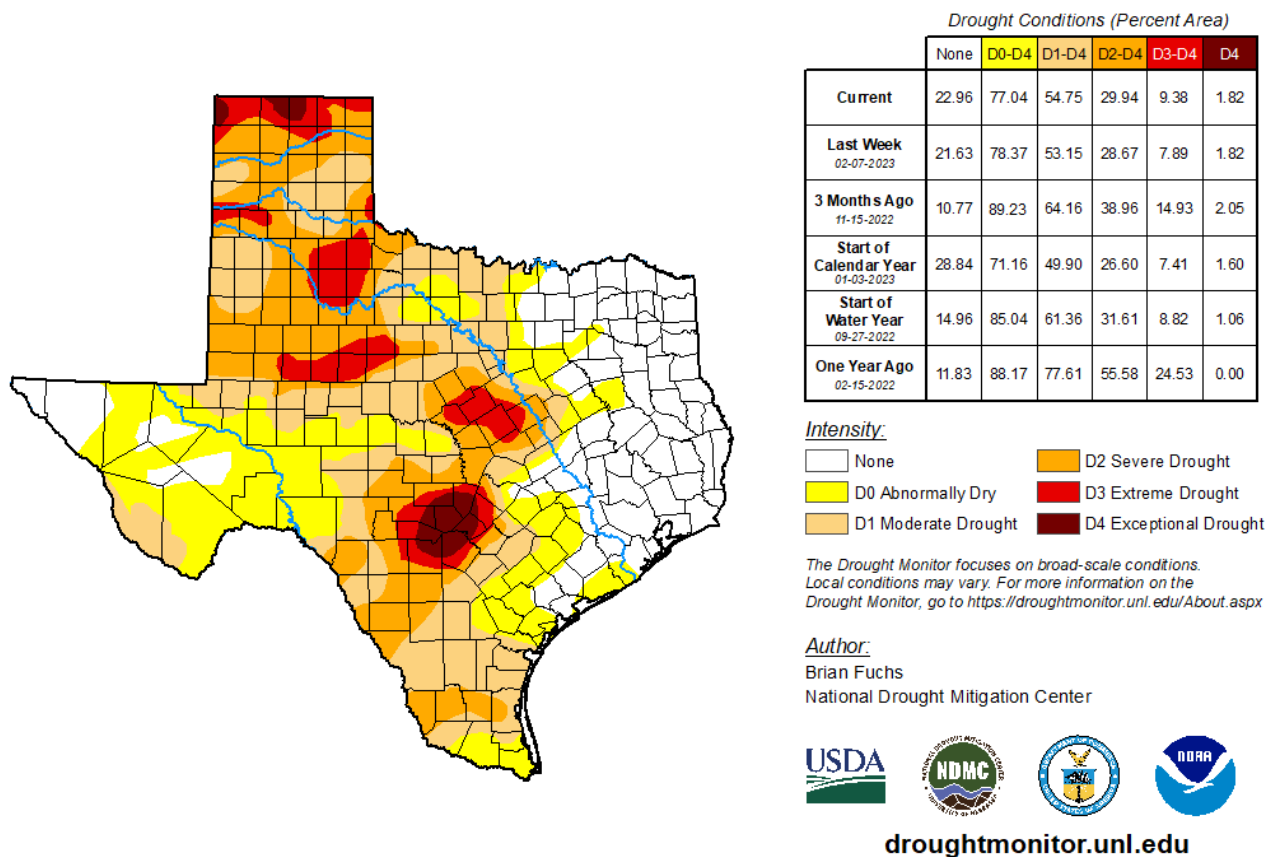


## Seven Day Observed Regional Precipitation, February 19, 2023.



Source: National Weather Service, [www.nws.noaa.gov](http://www.nws.noaa.gov)

## Drought Monitor, Valid February 14, 2023.



Source: National Drought Mitigation Center, a partnership with USDA, U.S. Department of Commerce/NOAA, <http://droughtmonitor.unl.edu>