



AGRI-FACTS

NATIONAL AGRICULTURAL STATISTICS SERVICE

United States Department of Agriculture • Washington, DC 20250

Washington Field Office • Olympia, WA 98507



Posted online July 14, 2009

Contact: David Knopf (360)902-1940

nass-wa@nass.usda.gov

JUNE CROP WEATHER REVIEW



At the beginning of the month, rain returned to major grain growing counties. This was a welcomed event for newly planted spring crops and a pattern that continued throughout June. In general, from Whitman County to the north, winter wheat conditions were average to sub par. However, Franklin, Walla Walla and Columbia reported vibrant, healthy stands due to fall rains and harvest prospects looked promising for southern grain farmers. Alfalfa growing conditions were generally good. While some hay did get rained on, most hay producers were pleased with the crop. Timothy grass production appeared to be hurt in Pend Oreille County by lack of rain and reports persisted of growers having trouble getting the crop dried before new rounds of moisture moved through. By months end, Grant County was well into their grass hay and the second cutting of alfalfa had begun. Christmas tree growers reported the usual assorted aphids and leader breakage from birds. Apples, stone fruits and vegetables looked very promising. Range and pasture conditions were generally good and helped along by the intermittent rain showers throughout June.

ACREAGE SUMMARY

The results of a State and National survey conducted in early June 2009 showed that Washington growers expect to harvest 1.62 million acres of winter wheat in 2009, down 100,000 acres from last year. Eighty thousand winter wheat acres are estimated to go unharvested this year, compared to 30,000 last year. Spring wheat harvested acreage however is expected to be up 90,000 acres from 2008. Some of the increase in Spring wheat acreage is due to the replanting of poor stands of winter wheat that failed due to low moisture or winterkill.

All dry hay for harvest is expected to reach 840,000 acres, 130,000 acres above last year's crop. Harvested acreage of alfalfa hay is estimated at 480,000 acres, up 70,000 acres from last year and other hay harvested acres are estimated at 360,000 acres, up 60,000 acres from 2008. Barley acreage continues to decline with 110,000 acres for harvest in 2009, 75,000 acres below last year. Oats and dry beans acreage for harvest was also collected in the survey. Dry beans planted and harvested acres increased 10,000 acres, to 60,000 acres. Growers expect to harvest 5,000 acres of oats for grain from 15,000 planted acres for all purposes.

JUNE ACREAGE SUMMARY, 2008-2009

CROP	WASHINGTON				ACREAGE FOR HARVEST			
	Planted		Harvested		Pacific NW 1/		United States	
	2008	2009	2008	2009 6/	2008	2009 6/	2008	2009 6/
	Thousand Acres							
All Wheat	2,260	2,300	2,225	2,215	4,500	4,260	55,685	50,445
Winter Wheat	1,750	1,700	1,720	1,620	3,295	3,060	39,614	34,787
Spring Wheat	510	600	505	595	1,195	1,190	13,487	13,205
Barley	190	125	185	110	810	715	3,767	3,142
Oats 2/	20	15	5	5	43	40	1,395	1,426
Corn 3/	165	170	90	90	203	200	78,640	80,107
Alfalfa	-	-	410	480	1,960	2,040	20,980	20,982
Hay, Other	-	-	300	360	1,185	1,360	39,082	39,195
Dry Beans 4/	50.0	60.0	50.0	60.0	133.7	163.9	1,445.2	1,396.8
Sugarbeets 5/	1.6	-	1.6	-	123.5	173.5	1,004.6	1,130.9

1/ Includes Oregon, Idaho, and Washington.

2/ Includes area planted in preceding fall.

3/ Planted acreage includes planted for all purposes; harvested acres for grain only.

4/ Excludes beans grown for garden seed.

5/ Estimate discontinued in Washington beginning in 2009.

6/ Forecasted.

GRAIN STOCKS

The quantity of all wheat stored in Washington on June 1, 2009 was 33.7 million bushels, up 45 percent from a year ago. Wheat stored on-farm decreased from 650,000 bushels in 2008 to 1.6 million bushels on June 1, 2009. Off-farm stocks were also up from 22.6 million a year ago to 32.1 million bushels being held on June 1, 2009.

Washington barley stored on-farm grew from last year, resulting in June 1 stocks of 1.2 million bushels. Off-farm barley stocks increased to 3.1 million from last year's holding of 1.8 million bushels. Nationally, barley stocks in all positions on June 1, 2009 totaled 88.6 million bushels, up 30 percent from a year ago.

GRAIN STOCKS: JUNE 1, 2008, MARCH 1, 2009 & JUNE 1, 2009

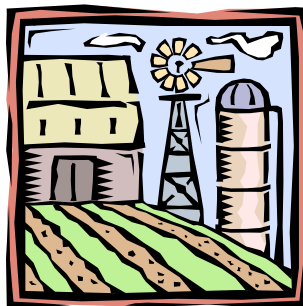
Crop & Quarter	Washington			Pacific Northwest 1/			United States		
	On Farm	Off Farm 2/	Total	On Farm	Off Farm 2/	Total	On Farm	Off Farm 2/	Total
Thousand Bushels									
Wheat 3/									
Jun 1, 2008	650	22,551	23,201	2,020	36,270	38,290	25,635	280,183	305,818
Mar 1, 2009	6,700	58,965	65,665	22,900	95,869	118,769	280,400	759,949	1,040,349
Jun 1, 2009	1,600	32,130	33,730	8,900	56,375	65,275	140,745	526,299	667,044
Barley 3/									
Jun 1, 2008	40	1,832	1,872	1,360	12,582	13,942	9,950	58,273	68,223
Mar 1, 2009	1,200	5,088	6,288	8,750	24,805	33,555	44,310	84,791	129,101
Jun 1, 2009	1,150	3,057	4,207	*	12,779	*	27,010	61,560	88,570
Oats 3/									
Jun 1, 2008	*	67	*	*	361	*	16,100	50,674	66,774
Mar 1, 2009	*	44	*	*	646	*	30,200	65,250	95,450
Jun 1, 2009	*	40	*	*	502	*	17,480	66,656	84,136
Corn 3/									
Jun 1, 2008	*	7,158	*	*	11,028	*	1,970,900	2,057,117	4,028,017
Mar 1, 2009	*	7,984	*	*	*	*	4,085,000	2,872,298	6,957,298
Jun 1, 2009	*	7,160	*	*	9,289	*	2,205,400	2,060,153	4,265,553

1/ Includes Washington, Oregon, and Idaho.

2/ Includes stocks at mills, elevators, warehouses, terminals, and processors.

3/ March 1, 2009 stocks were revised.

* "Off-farms unallocated" includes State data not published to avoid disclosure of individual operations; "on farms unallocated" includes minor producing States' data not published separately.



VEGETABLES: ONIONS: ACREAGE, YIELD, & PRODUCTION, 2008-2009 1/

Season & State	Area		Yield Per Acre		Production	
	Harvested 2008	Harvested 2009	2008	Forecasted 2009	2008	Forecasted 2009
	Acres		Cwt.		1,000 Cwt.	
Spring Onion Total 2/	28,400	27,000	338	358	9,603	9,653
Summer Non-Storage: 2/						
Washington 3/	1,900	2,000	360	375	684	750
California	7,600	6,300	540	580	4,104	3,654
Nevada	2,600	3,400	760	720	1,976	2,448
New Mexico	6,600	5,400	500	640	3,300	3,456
Texas	700	600	400	500	280	300
Total	19,400	17,700	533	599	10,344	10,608
Summer Storage: 4/						2008 Crop Shrink. & Loss
Washington	20,000	21,000	600		12,000	1,200
California 5/	7,500	6,300	380		2,850	400
Colorado	8,600	8,800	720		6,192	970
Idaho	3,600	3,900	280		1,008	200
Michigan	10,100	9,500	410		4,141	634
New York	12,200	12,000	710		8,662	870
Oregon: Malheur	9,600	9,600	620		5,952	410
Other	1,100	1,900	300		330	25
Wisconsin	1,690	1,810	497		840	113
Other States 6/	105,690	106,810	523		55,278	5,072
Total	31,300	32,000	425		13,303	250
Total Summer Onions	125,090	124,510	525		65,622	5,072
U.S. Total Onions	153,490	151,510	490		75,225	5,072

1/ Estimates for 2008 revised. Shrinkage and loss for 2009 will be published in the "Vegetable 2009 Summary", released January 2010. 2/ Primarily fresh market. 3/ Includes Walla Walla and other non-storage onions. 4/ Yield and production for 2009 will be published October 2, 2009. 5/ Primarily dehydrated and other processing. 6/ OH and UT.

GREEN PEAS FOR PROCESSING

State	Harvested Acres			Yield/Acre		Production		
	2008		Ind. 2009 Contract 1/	2008 Total	Ind. 2009 Contract 1/	2008		Ind. 2009 Contract 1/
	Total	Contract 1/				Total	Contract 1/	
	Acres			Tons		Tons		
Delaware	5,600	5,600	5,600	1.80	1.90	10,080	10,080	10,640
Minnesota	73,100	73,100	74,700	1.70	1.40	124,470	124,470	104,580
Oregon	18,000	18,000	16,300	1.85	2.00	33,320	33,320	32,600
Washington	40,100	40,100	45,400	2.58	2.60	103,460	103,460	118,040
Wisconsin	40,100	40,100	40,400	1.90	2.11	76,060	76,060	85,240
Other States 2/	32,800	32,800	29,200	1.96	1.71	64,390	64,390	49,820
U.S. Total	209,700	209,700	211,600	1.96	1.89	411,780	411,780	400,920

1/ Includes acreage from major brokers. 2/ 2008 and 2009: IL, MD, NJ, & NY.

SWEET CORN FOR PROCESSING (PLANTED AREA)

State	2007 Total	2008		2009 Contract Intentions 1/	2009/2008 Contract Change
		Total	Contract 1/		
	Acres				Percent
Maryland 2/	6,300	6,900	6,900		
Minnesota	122,100	127,900	127,900	136,100	+6.4%
Oregon	21,900	18,700	18,700	24,900	+33.2%
Washington	84,500	68,900	68,900	84,600	+22.8%
Wisconsin	87,600	88,900	88,900	81,300	-8.5%
Other States 3/	57,700	59,450	52,500	66,950	+27.5%
U.S. Total	380,100	370,750	363,800	393,850	+8.3%

1/ Includes acreage from major brokers. 2/ 2009 data not published to avoid disclosure of individual operations.

3/ 2008: DE, ID, IL, IA, NJ, NY, PA, TN and VA. 2009: DE, ID, IL, IA, MD, NJ, NY, and PA.

PRICES

Prices received for all hay by Washington growers in June 2009 was \$17.00 a ton less than last month and \$48.00 a ton less than in June 2008. The price for all potatoes was 15 cents per cwt. more than last month but \$3.25 per cwt. less than last year's price. The price for all wheat was 12 cents more per bushel than last month's price but \$2.31 per bushel less than the June 2008 price. Barley's price was \$3.04 per bushel in June 2009 compared to \$4.75 per bushel in June 2008. The price for milk, \$11.10 per cwt., was the same as last month's price but 39 percent below the price in June 2008.

AVERAGE PRICES RECEIVED BY FARMERS FOR FARM PRODUCTS (DOLLARS/UNIT)

COMMODITY	Unit	Entire Month		Preliminary June 2009	Entire Month		Preliminary June 2009	U.S. Parity Price
		June 2008	May 2009		June 2008	May 2009		
		Washington			United States			
Wheat, All	Bu.	7.94	5.51	5.63	7.62	5.84	5.69	13.80
Wheat, Winter	Bu.	7.54	5.31	5.53	7.51	5.52	5.54	-
Wheat, Durum	Bu.	-	-	-	8.48	7.05	7.13	-
Wheat, Spring	Bu.	10.10	6.49	6.17	10.10	6.76	6.74	-
Barley, All	Bu.	4.75	2.75	3.04	4.78	4.59	4.84	9.29
Corn for Grain	Bu.	-	-	-	5.47	3.97	3.93	8.50
Oats	Bu.	-	-	-	3.56	2.64	2.23	5.62
Lentils	Cwt.	-	-	-	30.00	30.10	32.00	-
Chickpeas, All	Cwt.	-	-	-	27.60	34.30	8/	-
Dry Edible Beans	Cwt.	-	-	-	33.50	31.40	32.20	66.50
Dry Edible Peas	Cwt.	-	-	-	17.20	12.10	10.80	-
Potatoes, All	Cwt.	11.10	7.70	7.85	10.78	9.62	9.73	19.50
Potatoes, processing	Cwt.	6.80	7.00	-	6.54	7.82	-	-
All Hay, (baled) 1/	Tons	191.00	160.00	143.00	161.00	131.00	123.00	-
Alfalfa (baled) 1/	Tons	190.00	150.00	130.00	172.00	138.00	128.00	-
Hay, Other (baled) 1/	Tons	195.00	190.00	180.00	130.00	113.00	107.00	-
Hops	Lbs.	-	-	-	-	-	-	6.76
Apples, Fresh 2/	Lbs.	0.416	0.180	0.176	0.412	0.185	0.181	0.786
Beef Cattle	Cwt.	-	-	-	91.90	83.20	80.80	243.00
Steers and Heifers	Cwt.	-	-	-	96.50	87.80	85.40	-
Calves	Cwt.	-	-	-	118.00	112.00	111.00	348.00
Milk Cows 3/	Head	-	-	-	-	-	-	-
Broilers, Live 4/	Lbs.	-	-	-	0.480	0.490	0.510	-
Eggs, Market 1/ 5/	Doz.	1.020	0.530	0.480	0.930	0.412	0.386	2.17
Milk, All Wholesale 6/ 7/	Cwt.	18.30	11.10	11.10	19.30	11.60	11.40	45.50
Hogs, All	Cwt.	-	-	-	53.40	44.50	43.90	133.00
Sheep	Cwt.	-	-	-	24.50	31.90	-	106.00
Lambs	Cwt.	-	-	-	102.00	101.00	-	274.00

1/ All prices are mid-month estimates.

2/ Equivalent packinghouse door returns for apples for CA, NY, MI, and WA. Prices as sold for other states.

3/ Animals sold for dairy herd replacement only. Prices available for January, April, July, and October.

4/ Equivalent liveweight price.

5/ Also referred to as table eggs.

6/ June 2009 fat test percent: all milk 3.55.

7/ Before deductions for hauling. Includes quality, quantity, and other premiums. Excludes hauling subsidies.

8/ Price not published to avoid disclosure of individual firms.

Washington Fruit & Nut Crops: Production, Price, & Value, 2006-2008

Crop & Year	Bearing Acreage	Utilized Production	Average Price	Value of Utilized Prod. 1/	Value Per Bearing Acre	Fresh Market		Processed		
						Quantity	Average Price	Quantity	Average Price	
		Acres	Tons	\$/Ton	\$1,000	Dollars	Tons	\$/Ton	Tons	\$/Ton
Apples	2006	154,000	2,775,000	506	1,403,282	9,112	2,175,000	626	600,000	69.60
	2007	153,000	2,600,000	684	1,780,420	11,637	2,175,000	780	425,000	197.00
	2008	153,000	2,900,000	442	1,283,106	8,386	2,300,000	534	600,000	91.50
Apricots	2006	1,200	5,200	1,190	6,180	5,150	-	-	-	-
	2007	1,200	7,200	991	7,137	5,948	-	-	-	-
	2008	1,200	4,200	1,570	6,614	5,512	-	-	-	-
Sweet Cherries	2006	32,000	168,000	1,590	267,794	8,369	123,000	1,970	45,000	566
	2007	33,000	157,000	2,060	323,128	9,792	129,000	2,400	28,000	483
	2008	33,000	100,000	2,930	292,936	8,877	85,000	3,350	15,000	546
Tart Cherries	2006	1,400	10,850	518	5,630	4,021	-	-	-	-
	2007	1,300	5,700	700	3,990	3,069	-	-	-	-
	2008	1,300	6,250	660	4,125	3,173	-	-	-	-
Bartlett Pears	2006	11,000	165,000	346	57,122	5,193	54,000	642	111,000	202
	2007	11,000	163,000	374	60,990	5,545	66,000	573	97,000	239
	2008	11,000	166,000	369	61,318	5,574	61,000	602	105,000	234
Other Pears	2006	13,000	196,000	521	102,109	7,855	-	-	-	-
	2007	13,000	239,000	491	117,234	9,018	-	-	-	-
	2008	13,000	212,000	518	109,891	8,453	-	-	-	-
Peaches	2006	2,400	23,000	522	12,008	5,003	-	-	-	-
	2007	2,300	18,500	480	8,873	3,858	-	-	-	-
	2008	2,300	16,800	498	8,361	3,635	-	-	-	-
Nectarines	2006	1,400	13,900	597	8,298	5,927	-	-	-	-
	2007	1,400	14,000	519	7,266	5,190	-	-	-	-
	2008	1,300	7,500	432	3,240	2,492	-	-	-	-
Prunes/Plums	2006	650	5,400	443	2,394	3,683	-	-	-	-
	2007	600	4,200	380	1,594	2,657	-	-	-	-
	2008	600	3,500	497	1,739	2,898	-	-	-	-
Grapes, All	2006	55,500	316,000	465	146,948	2,648	-	-	316,000	465
	2007	56,500	396,000	443	175,496	3,106	-	-	396,000	443
	2008	58,000	350,000	575	201,215	3,469	-	-	350,000	575
Grapes, Juice	2006	26,000	196,000	173	33,908	1,304	-	-	196,000	173
	2007	26,000	269,000	202	54,338	2,090	-	-	269,000	202
	2008	26,000	205,000	253	51,865	1,995	-	-	205,000	253
Grapes, Wine	2006	29,500	120,000	942	113,040	3,832	-	-	120,000	942
	2007	30,500	127,000	954	121,158	3,972	-	-	127,000	954
	2008	32,000	145,000	1,030	149,350	4,667	-	-	145,000	1,030
Other 2/	2006	-	1,750	-	1,155	-	-	-	-	-
	2007	-	2,050	-	1,515	-	-	-	-	-
	2008	-	1,950	-	1,480	-	-	-	-	-
State Total	2006	-	3,680,100	-	2,012,920	-	-	-	-	-
	2007	-	3,606,700	-	2,487,643	-	-	-	-	-
	2008	-	3,768,200	-	1,974,025	-	-	-	-	-

1/ Prices based at packinghouse door and processing plant door.

2/ Includes miscellaneous fruit and nuts.

- Not published to avoid disclosure of individual operations.

FRUIT PRODUCTION, JULY 1, 2009

Crop & State	Total Production 1/		
	2007	2008	Indicated 2009
PEACHES	Tons		
California:			
Clingstone	503,000	426,000	440,000
Freestone	446,000	433,000	350,000
Idaho	7,000	8,000	10,000
Oregon 2/	3,000	1,600	
Washington	18,500	16,800	20,000
United States	1,127,150	1,133,310	1,071,040
SWEET CHERRIES			
California 3/	85,000	86,000	75,000
Idaho	1,500	1,900	4,000
Michigan	27,300	26,500	28,000
Montana 4/	2,440	1,560	
New York	1,190	1,050	1,100
Oregon	35,000	30,000	65,000
Utah	1,250	50	1,400
Washington	157,000	100,000	200,000
United States	310,680	247,060	374,500
APRICOTS			
California	81,000	77,000	66,000
Utah	260	410	250
Washington	7,200	4,200	9,000
United States	88,460	81,610	75,250

1/ Includes unharvested production and harvested production not sold.

2/ Estimates discontinued in 2009.

3/ Forecast carried forward from "Crop Production" released June 10, 2009.

4/ The first estimate for 2009 sweet cherries in Montana will be published in the January 2010 "Noncitrus Fruits & Nuts 2009 Preliminary Summary."

FIELD CROP SUMMARY, JULY 1, 2009

Crop	Washington					Pacific NW 1/		United States			
	Harvested		Unit	Yield		Production		Production			
	2008	2009		2008	2009	2008	2009	2008	2009		
	Thousand Acres				Thousand		Thousand		Thousand		
All Wheat	2,225	2,215	Bu.	52.8	56.5	117,530	125,165	267,570	263,985	2,414,647	2,031,125
Winter Wheat	1,720	1,620	Bu.	56.0	60.0	96,320	97,200	201,270	194,520	1,867,903	1,524,771
Spring Wheat	505	595	Bu.	42.0	47.0	21,210	27,965	66,300	69,465	546,744	506,354
Barley	185	110	Bu.	57.0	60.0	10,545	6,600	62,675	60,965	239,498	203,329
Corn, Grain	90	90	Bu.	205.0	2/	18,450	2/	38,650	2/	12,101,238	2/
Hops	30,595	29,908	Lbs.	2,072	2/	63,392.7	2/	80,630.1	2/	80,630.1	2/
All Hay	710	840	Tons	3.68	2/	2,614	2/	11,153	2/	145,672	2/
Dry Beans	50.0	60.0	Cwt.	177	2/	885	2/	2,441	2/	25,558	2/
Potatoes, Fall	155.0	145.0	Cwt.	600	3/	93,000	3/	226,481	3/	412,742	3/

1/ Includes Oregon, Idaho, and Washington.

2/ First production forecast August 12, 2009.

3/ First production forecast November 10, 2009.