



CROP-WEATHER BULLETIN



USDA-NASS
West Virginia Field Office
Phone: (800) 535-7088
Fax: (304) 558-0297
Homepage: <http://www.nass.usda.gov/wv>

In Cooperation with:
US Department of Commerce-NOAA
USDA Farm Service Agency
WV Cooperative Extension Service
WV Dept. of Agriculture

SOURCE: USDA/NASS West Virginia Field Office
RELEASED: February 1, 2011

VOL. 11 NO. 1

January Summary of Weather and Agricultural Conditions January 3 - 30, 2011

For the week ending **January 9th**, the temperatures across the state remained well below average during the first full week of the new year. Most stations were about 7 degrees below normal. Through the week, Huntington was the "warmest" at only 4 degrees below normal, where Bluefield was a full 10 degrees below normal. Pineville had the highest recorded temperature of 51 degrees. Both Belington and Elkins had the lowest recorded temperature of -2 degrees. The state average temperature was 24 degrees. As well as being very cold, the state was also very dry this week. All stations reported below average precipitation. The limited precipitation that the state had mostly fell across the north central section from Weston to Elkins and Terra Alta. Weston had the highest recorded amount of precipitation with 0.52 of an inch. Moorefield had the lowest with zero recorded precipitation. The state average precipitation was 0.21 of an inch.

For the week ending **January 16th**, temperatures across the state were about 7 degrees below average, similar to the last reporting period. Bluefield was the coldest, being 12 degrees below average for the week. Moorefield had the highest recorded temperature of 49 degrees. Bluefield had the lowest recorded temperature of 1 degree. The state average temperature was 24 degrees. Not much precipitation fell this week. Snow fell across the state during the middle part of the work week. Elkins and Terra Alta received most of the precipitation but were still below average. The rest of the state was well below average. Terra Alta had the highest recorded amount of precipitation with 0.69 of an inch. Huntington had the lowest recorded amount of precipitation with 0.06 of an inch. The state average precipitation was 0.23 of an inch.

The work week started warm as a front passed through but then turned and stayed very cold for the rest of the week ending **January 23rd**. Clear skies at night across the state (on some nights) allowed some sites to report very low temperatures. Following the trend so far this year, all stations reported below average temperatures for the week. Charleston had the highest recorded temperature of 51 degrees. Terra Alta had the lowest recorded temperature of -15 degrees. The state average temperature was 25 degrees. Most of the precipitation this week fell on Thursday night and Friday in the form of snow. The averages varied somewhat, but most stations received below average precipitation. Parkersburg had the highest recorded amount of precipitation with 0.71 of an inch. White Sulphur Springs had the lowest recorded amount of precipitation with 0.10 of an inch. The state average precipitation was 0.41 of an inch.

The temperatures across the state were closer to normal the week ending **January 30th**. Huntington and Beckley both reported slightly above average, Parkersburg reported at average, and the rest of the stations still reported below average temperatures for the week. At some point this week, most stations reported high temperatures in the 50s. Williamson reported a temperature of 60 degrees, which was the highest for the week. Both Elkins and Marlinton had the lowest recorded temperature of 1 degree. The state average temperature was 30 degrees. With slightly warmer temperatures, most of the precipitation that fell across the state this week was rain. The majority of the precipitation fell midweek as a front passed through. Several stations reported more than one inch. Bluefield had the highest recorded amount of precipitation with 1.52 inches. Martinsburg had the lowest with 0.17 of an inch of precipitation recorded. The state average precipitation was 0.82 of an inch.

For the week ending **January 30th**, reported topsoil moisture was 2 percent very short, 8 percent short, 75 percent adequate and 15 percent surplus compared with 73 percent adequate and 27 percent surplus last year. Hay and roughage supplies were 4 percent very short, 15 percent short, 73 percent adequate and 8 percent surplus compared with 10 percent short, 89 percent adequate and 1 percent surplus last year. Feed grain supplies were 2 percent very short, 21 percent short, 76 percent adequate and 1 percent surplus compared with 5 percent short and 95 percent adequate last year. Winter Wheat conditions were 4 percent very poor, 11 percent poor, 21 percent fair and 64 percent good. Range and pasture conditions were 8 percent very poor, 12 percent poor, 45 percent fair, 34 percent good and 1 percent excellent. Cattle and calves were 3 percent poor, 25 percent fair, 69 percent good and 3 percent excellent. Sheep and lambs were 2 percent poor, 28 percent fair, 68 percent good and 2 percent excellent. Farming activities included: feeding hay and taking care of livestock, breaking ice to secure water sources for livestock, calving and lambing.



Temperature and Precipitation Data for the Week Ending 01 - 30 - 11

Station	Temperature				Precipitation				
	High	Low	Average	Weekly Departure	Week's Total	Norm	Since April 1st 2010	Same Week Last Year	Season Normal
--NORTHWEST--									
WHEELING	37	4	28		0.27		25.24	29.11	
PARKERSBURG	46	12	31	0	0.24	0.66	34.10	32.29	35.38
CRESTON	48	11	31		0.66		35.40	41.33	
--NORTHCENTRAL--									
MORGANTOWN	40	5	29		0.79		36.87	36.70	
CLARKSBURG	42	4	29	-1	0.23	0.77	32.82	36.38	37.75
BELINGTON	45	6	29		1.44		38.13	45.18	
WESTON	45	6	30		0.92		37.34	40.29	
--SOUTHWEST--									
WILLIAMSON	60	19	38		1.28		41.88	44.47	
HUNTINGTON	52	11	34	2	0.90	0.70	41.01	44.80	35.04
CHARLESTON	53	16	33	-1	0.97	0.77	39.66	40.98	35.91
RIPLEY	50	20	33		0.84		33.29	36.12	
--CENTRAL--									
TERRA ALTA	38	16	26		1.14		42.85	41.33	
ELKINS	45	1	27	-2	1.44	0.77	39.93	50.96	38.86
MARLINTON	50	1	25		0.62		32.17	43.73	
BECKLEY	52	17	30	1	0.86	0.70	35.40	42.78	33.56
--SOUTHERN--									
PINEVILLE	54	21	34		1.07		38.77	51.74	
BLUEFIELD	53	17	31	-2	1.52	0.70	36.77	44.11	33.02
WHITE SUL SP	54	13	31		0.51		25.76	43.20	
BLUESTONE DAM	55	19	34		0.97		22.96	41.92	
--NORTHEASTERN--									
MARTINSBURG	42	4	27	-5	0.17	0.58	25.86	37.39	33.40
KEYSER	50	2	29		0.96		25.45	40.95	
MOOREFIELD	52	3	29		0.18		22.41	34.54	
State Average Temperature	30								
State Average Precipitation	0.82								

Sources:
Weather comments and data - Dept. of Commerce, National Oceanic & Atmospheric Administration National Weather Service, Charleston, WV.

INTERNET ACCESS: ALL National Agricultural Statistics Service (NASS) reports are now available free of charge on the Internet.
For access, connect to the Internet and select: <http://www.nass.usda.gov/>.



CROP-WEATHER BULLETIN



USDA-NASS
West Virginia Field Office
Phone: (800) 535-7088
Fax: (304) 558-0297
Homepage: <http://www.nass.usda.gov/wv>

In Cooperation with:
US Department of Commerce-NOAA
USDA Farm Service Agency
WV Cooperative Extension Service
WV Dept. of Agriculture

SOURCE: USDA/NASS West Virginia Field Office
RELEASED: February 28, 2011

VOL. 11 NO. 2

February Summary of Weather and Agricultural Conditions January 31 - February 27, 2011

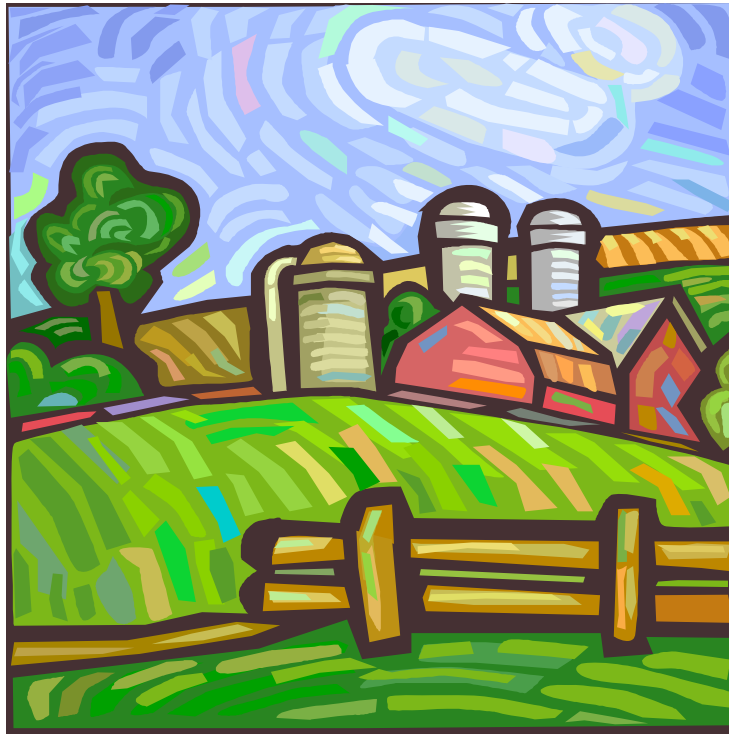
Warmer air finally made a brief appearance in the Mountain State the week ending **February 6th**. The state average temperature jumped four degrees from the previous reporting period as afternoon highs reached the mid 50s to around 60 degrees at many locations. The northeastern section of the State was a different story. The average temperature there was 3 degrees below normal. Overnight lows in the teens were common, statewide. Williamson and Charleston both had the highest recorded temperature of 61 degrees. Terra Alta had the lowest recorded temperature of 12 degrees. The state average temperature was 34 degrees. The state average precipitation was just over one half inch. This time, with the warmer air, it was more rain than snow. Again, the northeastern sections were an exception. Some locations reported precipitation of more than an inch. Terra Alta had the highest recorded amount of precipitation with 1.18 inches. Both Bluefield and Bluestone Dam had the lowest recorded amount of precipitation with 0.21 of an inch. The state average precipitation was 0.59 of an inch.

Despite a late-week surge in temperatures, all locations reported below normal average temperatures for the week ending **February 13th**. Readings actually reached the mid 50s to lower 60s over the weekend when gusty southwesterly winds moved warmer air into the Mountain State. Earlier in the week a strong cold front followed by clearing skies and calm winds resulted in overnight lows as low as minus two degrees for a couple of locations with single digits reported elsewhere. Huntington and Ripley both had the highest recorded temperature of 61 degrees. Elkins and Marlinton both had the lowest recorded temperature of -2 degrees. The state average temperature was 27 degrees. Precipitation was very light this week. The state average of 0.19 of an inch was far below the normal for this time of year. Three of the reporting sites had zero recorded precipitation: Bluestone Dam, Martinsburg, and Moorefield. Northeastern sections of the state were the driest. Belington had the highest recorded amount of precipitation with 0.42 of an inch.

There was a drastic warm-up across the Mountain State the week ending **February 20th**. The state average temperature jumped 16 degrees from the previous week. A surge of warm air lifted afternoon highs into the lower 70s in southwestern sections of the State as well as the Eastern Panhandle. As a result, all sites were well above normal for the week. As the week closed, a cold front delivered cooler air into the region and brought an end to the unusually warm conditions. Williamson had the highest recorded temperature of 73 degrees. Terra Alta had the lowest recorded temperature of 16 degrees. The state average temperature was 43 degrees. Precipitation amounts remained low and the average was only 0.16 of an inch. Terra Alta, in the north central part of the state, was the exception. The bulk of the precipitation there (0.70 of an inch) fell on the last day of the week. Early in the week 0.17 of an inch fell, making a 0.87 of an inch total that was far above any other site. In fact, 12 of the sites had precipitation of less than 0.10 of an inch for the week. Both Weston and Ripley had zero recorded precipitation.

Most stations reported above average temperatures the week ending **February 27th**. The only exception was Martinsburg, which reported 3 degrees below average. Although the temperatures were a little on the warm side, they fluctuated throughout the week as warm and then cold fronts passed through. A few stations reported highs in the 70s while others reported lows in the teens. Williamson had the highest recorded temperature of 73 degrees. Martinsburg had the lowest recorded temperature of 12 degrees. The state average temperature was 41 degrees. Precipitation amounts were very high this week due to the passing of several frontal systems. All stations reported higher than average precipitation amounts. Many stations had multiple days with rain reporting over one inch. Parkersburg and Creston both reported over three inches for the week. Creston had the highest recorded amount of precipitation with 3.29 inches. Wheeling had the lowest recorded amount of precipitation with 0.62 of an inch. The state average precipitation was 1.88 inches.

For the week ending **February 27th**, reported topsoil moisture was 2 percent very short, 10 percent short, 59 percent adequate and 29 percent surplus compared with 72 percent adequate and 28 percent surplus last year. Hay and roughage supplies were 6 percent very short, 21 percent short, 62 percent adequate and 11 percent surplus compared with 6 percent very short, 16 percent short, 76 percent adequate and 2 percent surplus last year. Feed grain supplies were 2 percent very short, 23 percent short and 75 percent adequate compared with 7 percent short and 93 percent adequate last year. Winter wheat conditions were reported 4 percent very poor, 11 percent poor, 23 percent fair and 62 percent good. Range and pasture conditions were reported 10 percent very poor, 35 percent poor, 37 percent fair, 15 percent good and 3 percent excellent. Cattle and calves were 4 percent poor, 32 percent fair, 59 percent good and 5 percent excellent. Calving was 39 percent complete, compared to 23 percent last year. Sheep and lambs were 3 percent poor, 34 percent fair, 59 percent good and 4 percent excellent. Lambing was 41 percent complete, compared to 35 percent last year. Farming activities included: feeding hay and taking care of livestock, cleaning out ponds, pruning dormant fruit trees, calving, lambing and kidding.



Temperature and Precipitation Data for the Week Ending 02 - 27 - 11

Station	Temperature				Precipitation				
	High	Low	Average	Weekly Departure	Week's Total	Week's Norm	Since April 1st 2010	Same Week Last Year	Season Normal
--NORTHWEST--									
WHEELING	62	20	35		0.62		26.52	31.80	
PARKERSBURG	66	28	40	3	3.23	0.75	38.44	34.38	38.13
CRESTON	65	29	40		3.29		39.83	45.08	
--NORTHCENTRAL--									
MORGANTOWN	65	25	38		1.90		40.04	40.16	
CLARKSBURG	65	27	40	6	2.64	0.80	36.74	40.19	40.82
BELINGTON	67	28	41		1.96		41.14	49.80	
WESTON	67	29	41		2.80		40.72	43.65	
--SOUTHWEST--									
WILLIAMSON	73	33	47		2.31		44.99	47.07	
HUNTINGTON	69	31	45	7	2.37	0.77	44.21	47.85	37.93
CHARLESTON	69	30	45	6	1.82	0.84	42.14	44.50	39.09
RIPLEY	70	30	44		2.89		37.20	40.50	
--CENTRAL--									
TERRA ALTA	62	18	38		2.58		47.86	47.25	
ELKINS	65	26	40	6	1.98	0.84	43.35	55.25	42.05
MARLINTON	61	23	38		0.90		33.87	47.14	
BECKLEY	62	27	42	8	1.20	0.69	37.04	45.48	36.24
--SOUTHERN--									
PINEVILLE	62	30	45		1.69		41.30	55.00	
BLUEFIELD	67	28	46	8	1.65	0.77	38.90	48.07	35.92
WHITE SUL SP	63	25	43		0.83		27.13	46.22	
BLUESTONE DAM	67	33	45		1.11		24.29	44.53	
--NORTHEASTERN--									
MARTINSBURG	64	12	34	-3	0.86	0.66	27.81	40.12	35.78
KEYSER	68	21	37		1.60		28.38	44.34	
MOOREFIELD	70	21	38		1.19		24.28	37.91	
State Average Temperature	41								
State Average Precipitation	1.88								

Source:
Weather comments and data - Dept. of Commerce, National Oceanic & Atmospheric Administration National Weather Service, Charleston, WV.

INTERNET ACCESS: ALL National Agricultural Statistics Service (NASS) reports are now available free of charge on the Internet.
For access, connect to the Internet and select: <http://www.nass.usda.gov/>.



CROP-WEATHER BULLETIN



USDA-NASS
West Virginia Field Office
Phone: (800) 535-7088
Fax: (304) 558-0297
Homepage: <http://www.nass.usda.gov/wv>

In Cooperation with:
US Department of Commerce-NOAA
USDA Farm Service Agency
WV Cooperative Extension Service
WV Dept. of Agriculture

SOURCE: USDA/NASS West Virginia Field Office
RELEASED: March 28, 2011

VOL. 11 NO. 3

March Summary of Weather and Agricultural Conditions February 28 - March 27, 2011

The week ending **March 6th** had a mix of rain, snow and sunshine. The maximum temperatures ranged from the low 40s to the 60s, with Williamson and Charleston both breaking the 70 degree mark. The majority of the low temperatures were below freezing except for a few days at the end of the work week; several stations even bottomed out in the teens. Williamson had the highest recorded temperature of 72 degrees. Terra Alta, Elkins, and Marlinton all had the lowest recorded temperature of 17 degrees. The state average temperature was 41 degrees. Precipitation was well above average for the second week in a row as major precipitation events started and ended this week. There was minor flooding reported across the state and winter weather returned as some areas reported snowfall. Bluefield had the highest recorded amount of precipitation with 3.82 inches. Moorefield had the lowest recorded amount of precipitation with 0.63 of an inch. The state average precipitation was 2.14 inches.

The week ending **March 13th** was another wet week for the Mountain State and for the third consecutive week, the state average temperature was 41 degrees. Afternoon highs ranged through the 60s over the weekend and communities in the southwestern section were near the 70 degree mark. Cold overnight lows actually kept a few sites below normal for the week. Huntington and Moorefield both had the highest recorded temperature of 68 degrees. Terra Alta had the lowest recorded temperature of 15 degrees. The state average precipitation of 1.70 inches was not far from the 1.88 inches recorded the previous week. Four sites topped the two inch mark with Keyser having the most precipitation at 2.61 inches. As a result, flood watches and warnings were issued for the entire state during the week. The heavy rain melted nearly all of the snow covering the region. Bluestone Dam had the lowest recorded amount of precipitation with 0.93 of an inch.

Temperatures took a jump the week ending **March 20th** and the state average was five degrees higher than the previous week. All sites recorded above normal readings for the week. Clarksburg led the way with an average that was six degrees above normal and Huntington was five degrees above normal. Nearly every site reached the 70 degree mark for at least one day. Mid and upper 70s were common for the southern sections and the Eastern Panhandle. Both Williamson and Martinsburg had the highest recorded temperature of 79 degrees. Terra Alta had the lowest recorded temperature of 21 degrees. The state average temperature was 46 degrees. Rainfall averaged 0.75 of an inch with six stations receiving over an inch of rain. The wet spot was Williamson followed by Elkins. Streams remained high after last week's average of 1.70 inches. That rain brought an end to the forest fire threat, at least for the time being, and filled many ponds and water storage areas. Williamson had the highest recorded amount of precipitation with 1.50 inches. Wheeling had the lowest recorded amount of precipitation with 0.13 of an inch.

The weather this week was a mix of winter and spring for the week ending **March 27th**. Despite afternoon temperatures reaching well into the 70s for a couple of days, the state average temperature fell two degrees from last week. The week ended with some frosty temperatures as overnight lows dipped into the teens to mid 20s for most sites. Williamson had the highest recorded temperature of 81 degrees. Terra Alta had the lowest recorded temperature of 16 degrees. The state average temperature was 44 degrees. Precipitation was up from the previous week. The weekly average precipitation was near an inch and several sites had over an inch of precipitation for the week. The higher amounts were generally recorded over the northern sections of the state. Later in the week, precipitation fell as snow and a few inches were seen over the higher elevations. Creston had the highest recorded amount of precipitation with 1.84 inches. Huntington had the lowest recorded amount of precipitation with 0.24 of an inch. The state average precipitation was 0.98 of an inch.

For the week ending **March 27th**, reported topsoil moisture was 3 percent short, 78 percent adequate and 19 percent surplus compared with 1 percent short, 65 percent adequate and 34 percent surplus last year. Hay and roughage supplies were 3 percent very short, 23 percent short, 62 percent adequate and 12 percent surplus compared with 5 percent very short, 18 percent short, 74 percent adequate and 3 percent surplus last year. Feed grain supplies were 4 percent very short, 13 percent short and 83 percent adequate compared with 8 percent short, 91 percent adequate and 1 percent surplus last year. Winter wheat conditions were reported 4 percent very poor, 9 percent poor, 32 percent fair, 53 percent good and 2 percent excellent. Range and pasture conditions were reported 10 percent very poor, 38 percent poor, 29 percent fair, 19 percent good and 4 percent excellent. Cattle and calves were 5 percent poor, 29 percent fair, 61 percent good and 5 percent excellent. Calving was 70 percent complete, compared to 66 percent last year. Sheep and lambs were 3 percent poor, 34 percent fair, 59 percent good and 4 percent excellent. Lambing was 73 percent complete, compared to 77 percent last year. Farming activities included: repairing fences from recent high winds, seeding pastures, feeding hay and taking care of livestock, calving, lambing and kidding.



Temperature and Precipitation Data for the Week Ending 03 - 27 - 11

Station	Temperature				Precipitation				
	High	Low	Average	Weekly Departure	Week's Total	Week's Norm	Since April 1st 2010	Same Week Last Year	Season Normal
--NORTHWEST--									
WHEELING	73	19	40		0.25		29.55	34.34	
PARKERSBURG	76	26	44	-3	1.77	0.85	44.35	37.33	41.55
CRESTON	76	23	45		1.84		46.50	48.49	
--NORTHCENTRAL--									
MORGANTOWN	74	25	43		0.88		45.53	42.47	
CLARKSBURG	74	22	43	0	1.24	0.91	42.63	42.61	44.51
BELINGTON	73	18	41		1.24		47.03	52.04	
WESTON	75	25	45		1.55		48.05	45.96	
--SOUTHWEST--									
WILLIAMSON	81	28	49		0.59		51.12	49.62	
HUNTINGTON	79	26	48	1	0.24	0.84	49.28	50.72	41.27
CHARLESTON	78	24	47	-1	0.74	0.85	47.04	49.32	42.64
RIPLEY	77	27	46		1.46		43.38	43.44	
--CENTRAL--									
TERRA ALTA	65	16	35		0.94		53.96	50.63	
ELKINS	71	18	42	0	1.77	0.88	50.47	57.82	45.61
MARLINTON	68	19	40		1.45		40.09	49.85	
BECKLEY	72	21	43	1	0.57	0.73	42.20	50.06	39.07
--SOUTHERN--									
PINEVILLE	76	30	48		0.51		46.69	59.09	
BLUEFIELD	75	27	45	-2	1.30	0.84	46.74	52.38	39.22
WHITE SUL SP	75	25	46		0.76		32.09	49.29	
BLUESTONE DAM	75	30	49		0.55		29.11	47.45	
--NORTHEASTERN--									
MARTINSBURG	77	26	43	-4	0.69	0.81	31.91	45.09	38.95
KEYSER	75	22	42		0.75		33.72	48.45	
MOOREFIELD	74	20	44		0.57		27.20	41.08	
State Average Temperature	44								
State Average Precipitation	0.98								

Source: Weather comments and data - Dept. of Commerce, National Oceanic & Atmospheric Administration National Weather Service, Charleston, WV.

INTERNET ACCESS: ALL National Agricultural Statistics Service (NASS) reports are now available free of charge on the Internet. For access, connect to the Internet and select: <http://www.nass.usda.gov/>.



USDA-NASS
 West Virginia Field Office
 Phone: (800) 535-7088
 Fax: (304) 558-0297
 Homepage: <http://www.nass.usda.gov/wv>

CROP-WEATHER BULLETIN



In Cooperation with:
 US Department of Commerce-NOAA
 USDA Farm Service Agency
 WV Cooperative Extension Service
 WV Dept. of Agriculture

SOURCE: USDA/NASS West Virginia Field Office
 RELEASED: April 4, 2011

VOL. 11 NO.4
 FOR WEEK OF: March 28 - April 3

GENERAL

Although the week ended on a warm note, the rest of the week was very cold and all temperatures across the state this week were well below average; both Charleston and Bluefield came in at 11 degrees below average. The lowest recorded temperatures across the state were in the mid teens to upper 20s. The highest temperatures ranged from the mid 50s to mid 70s. Due to more showery storms this week, precipitation totals ranged greatly across the state and because the temperatures were so low, most stations saw snow at least one day. The eastern mountains recorded several inches of snow.

Temperatures: Williamson had the highest recorded temperature of 77 degrees. Both Terra Alta and Marlinton had the lowest recorded temperature of 16 degrees. The state average temperature was 38 degrees.

Precipitation: Belington had the highest recorded amount of precipitation with 1.10 inches. Huntington had the lowest recorded precipitation with 0.32 of an inch. The state average precipitation was 0.56 of an inch.

Number of days suitable for fieldwork averaged 3 days last week. Total acres plowed that are intended for spring planted crops were 22 percent complete, compared with 19 percent in 2010 and 25 percent for the 5-yr average.

TOPSOIL MOISTURE CONDITION

	Very Short	Short	Adequate	Surplus
	PERCENT			
Current				
Week	--	4	81	15
Last				
Week	--	3	78	19
Last				
Year	1	3	87	9

SUPPLIES

Hay and roughage supplies ranged from very short to surplus, but were reported as mostly adequate. Feed grain supplies ranged from very short to adequate, but were reported as mostly adequate. Farm activities included: marketing cattle, repairing fences damaged from recent high winds, seeding pastures, feeding hay and taking care of livestock, calving, lambing and kidding.

CROP AND LIVESTOCK CONDITIONS

	Very Poor	Poor	Fair	Good	Exc
	PERCENT				
Cattle & Calves	--	4	35	58	3
Sheep & Lambs	--	2	34	61	3
Apples	--	--	35	63	2
Peaches	--	--	37	62	1
Hay	5	32	43	19	1
Wheat	6	12	49	33	--
Pasture	3	50	29	16	2

FRUIT

Most areas had freezing temperatures during this reporting period. Some light crop damage occurred on apples and peaches, which had advanced to the tight cluster stage (apple) or pink (peaches). In general any damage to these fruit crops at this time is not sufficient to prevent a normal crop load at harvest. Peach pruning continues in the field and most tree fruit growers have applied their dormant or delayed dormant pest sprays. Apple conditions ranged from fair to excellent with most orchards in good condition. Peach conditions ranged from fair to excellent with most orchards in good condition.

GRAINS and HAY

Winter wheat conditions ranged from very poor to good, but most fields were reported in fair to good condition. Hay conditions ranged from very poor to excellent, but fields were reported in mostly fair condition.

LIVESTOCK and PASTURE

Cattle conditions ranged from poor to excellent, but most herds were reported in good condition. Cattle were 77 percent calved, compared with 79 percent last year and 75 percent for the 5-yr average. Sheep conditions ranged from poor to excellent, but most flocks were reported in good condition. Sheep were 79 percent lambled, compared with 84 percent last year and 82 percent for the 5-yr average. Pasture conditions ranged from very poor to excellent, but fields were reported in mostly poor condition.

HISTORICAL CROP PROGRESS

YEAR	PERCENT OF TOTAL ACRES PREPARED FOR SPRING PLANTING
2011	22
2010	19
5 YR AVG	25

**West Virginia
Field
Office**



Temperature and Precipitation Data for the Week Ending 04-03-11

Station	Temperature				Precipitation				
	High	Low	Weekly Average	Weekly Departure	Week's Total	Week's Norm	Since April 1st 2011	Same Week Last Year	Season Normal
--NORTHWEST--									
WHEELING	53	22	38		0.42		0.28	0.00	
PARKERSBURG	68	27	40	-9	0.44	0.81	0.16	0.00	0.45
CRESTON	64	20	38		0.41		0.17	0.00	
--NORTHCENTRAL--									
MORGANTOWN	63	25	39		0.71		0.56	0.00	
CLARKSBURG	57	24	39	-6	0.67	0.87	0.48	0.00	0.48
BELINGTON	56	21	36		1.10		0.95	0.00	
WESTON	66	23	39		0.50		0.20	0.00	
--SOUTHWEST--									
WILLIAMSON	77	30	44		0.64		0.44	0.00	
HUNTINGTON	73	27	41	-8	0.32	0.81	0.21	0.00	0.44
CHARLESTON	72	21	39	-11	0.38	0.80	0.22	0.00	0.44
RIPLEY	69	24	40		0.34		0.11	0.00	
--CENTRAL--									
TERRA ALTA	57	16	33		0.52		0.39	0.00	
ELKINS	57	17	35	-9	0.73	0.84	0.57	0.00	0.48
MARLINTON	57	16	33		0.60		0.37	0.00	
BECKLEY	67	19	35	-9	0.38	0.74	0.28	0.00	0.41
--SOUTHERN--									
PINEVILLE	70	26	40		0.78		0.59	0.00	
BLUEFIELD	70	22	38	-11	0.71	0.77	0.28	0.00	0.44
WHITE SUL SP	65	20	38		0.68		0.52	0.00	
BLUESTONE DAM	67	28	41		0.50		0.28	0.00	
--NORTHEASTERN--									
MARTINSBURG	55	23	40	-9	0.48	0.76	0.22	0.00	0.43
KEYSER	55	22	38		0.45		0.20	0.00	
MOOREFIELD	57	19	39		0.48		0.31	0.00	
State Average Temperature	38								
State Average Precipitation	0.56								

Sources:

Weather comments and data - Dept. of Commerce, National Oceanic & Atmospheric Administration National Weather Service, Charleston, WV.

Fruit comments - Stephen S. Miller, Ph.D. Research Horticulturist, Appalachian Fruit Research Station.



USDA-NASS
 West Virginia Field Office
 Phone: (800) 535-7088
 Fax: (304) 558-0297
 Homepage: <http://www.nass.usda.gov/wv>

CROP-WEATHER BULLETIN



In Cooperation with:
 US Department of Commerce-NOAA
 USDA Farm Service Agency
 WV Cooperative Extension Service
 WV Dept. of Agriculture

SOURCE: USDA/NASS West Virginia Field Office
 RELEASED: April 12, 2011

VOL. 11 NO.5
 FOR WEEK OF: April 4 - April 10

GENERAL

There was a substantial jump in both temperature and precipitation this week. The state average temperature of 54 degrees is 16 degrees higher than last week. Warm southerly wind and abundant sunshine pushed afternoon highs to the mid and upper 80s for nearly every reporting site. Heavy showers associated with passing frontal systems pushed the state average rainfall to 1.73 inches. That was more than three times last week's average. Rainfall totals over two inches were observed at a few sites and several locations recorded over an inch of precipitation. The Eastern Panhandle was the exception; amounts there were less than one inch.

Temperatures: Both Williamson and Moorefield had the highest recorded temperature of 89 degrees. Marlinton had the lowest recorded temperature of 24 degrees.

Precipitation: Pineville had the highest recorded amount of precipitation with 4.19 inches. Moorefield had the lowest recorded precipitation with 0.65 of an inch.

Number of days suitable for fieldwork averaged 4 days last week. Total acres plowed that are intended for spring planted crops were 27 percent complete, compared with 48 percent in 2010 and 38 percent for the 5-yr average.

TOPSOIL MOISTURE CONDITION

	Very Short	Short	Adequate	Surplus
	PERCENT			
Current Week	--	7	78	15
Last Week	--	4	81	15
Last Year	2	10	86	2

SUPPLIES

Hay and roughage supplies ranged from very short to surplus, but were reported as mostly adequate. Feed grain supplies ranged from very short to surplus, but were reported as mostly adequate. Farm activities included: field preparation and planting, building and repairing fences, turning livestock out on pasture, calving, lambing and kidding.

CROP AND LIVESTOCK CONDITIONS

	Very Poor	Poor	Fair	Good	Exc
	PERCENT				
Cattle & Calves	--	6	36	54	4
Sheep & Lambs	--	3	36	56	5
Apples	--	--	37	61	2
Peaches	--	--	41	58	1
Hay	4	21	46	29	--
Wheat	4	10	29	55	2
Pasture	2	47	28	22	1

FRUIT

All tree fruit crops have advanced in their bud stages. Some peaches are showing about 5 percent bloom. Apples and cherries remain in pre-bloom conditions, but are expected to advance significantly over the next several days. Some damage has been reported on peaches and apples from low temperatures about 12 days ago. Apple conditions ranged from fair to excellent with most orchards in good condition. Peach conditions ranged from fair to excellent with most orchards in good condition.

GRAINS and HAY

Corn was 4 percent planted, compared with 2 percent last year and 2 percent for the 5-yr average. Winter wheat conditions ranged from very poor to excellent, but most fields were reported in good condition. Hay conditions ranged from very poor to good, but fields were reported in mostly fair condition.

LIVESTOCK and PASTURE

Cattle conditions ranged from poor to excellent, but most herds were reported in good condition. Cattle were 79 percent calved, compared with 86 percent last year and 81 percent for the 5-yr average. Sheep conditions ranged from poor to excellent, but most flocks were reported in good condition. Sheep were 82 percent lambled, compared with 85 percent last year and 86 percent for the 5-yr average. Pasture conditions ranged from very poor to excellent, but fields were reported in mostly poor condition.

HISTORICAL CROP PROGRESS

YEAR	CORN	PERCENT OF TOTAL ACRES PREPARED FOR SPRING PLANTING
	PLANTED	
2011	4	27
2010	2	48
5 YR AVG	2	38



Temperature and Precipitation Data for the Week Ending 04-10-11

Station	Temperature				Precipitation				
	High	Low	Weekly Average	Weekly Departure	Week's Total	Week's Norm	Since April 1st 2011	Same Week Last Year	Season Normal

--NORTHWEST--									
WHEELING	83	31	52		1.16		1.44	0.11	
PARKERSBURG	85	33	57	6	1.45	0.77	1.61	0.20	1.22
CRESTON	84	27	56		1.79		1.96	0.30	

--NORTHCENTRAL--									
MORGANTOWN	84	33	55		1.47		2.03	0.33	
CLARKSBURG	83	29	56	8	1.38	0.81	1.86	0.34	1.29
BELINGTON	82	28	53		1.89		2.84	0.89	
WESTON	86	30	56		1.48		1.68	0.50	

--SOUTHWEST--									
WILLIAMSON	89	32	59		2.05		2.49	0.57	
HUNTINGTON	87	32	61	10	2.17	0.74	2.38	0.68	1.18
CHARLESTON	88	29	59	7	2.08	0.75	2.30	1.21	1.19
RIPLEY	87	27	57		1.93		2.04	0.81	

--CENTRAL--									
TERRA ALTA	79	30	48		1.09		1.48	1.05	
ELKINS	84	28	53	7	1.27	0.79	1.84	0.59	1.27
MARLINTON	76	24	48		1.22		1.59	1.18	
BECKLEY	80	26	53	7	2.80	0.75	3.08	0.49	1.16

--SOUTHERN--									
PINEVILLE	82	30	57		4.19		4.78	0.38	
BLUEFIELD	83	27	54	3	2.14	0.77	2.42	0.63	1.21
WHITE SUL SP	83	26	54		1.83		2.35	1.21	
BLUESTONE DAM	81	33	57		2.26		2.54	0.25	

--NORTHEASTERN--									
MARTINSBURG	85	33	50	-1	0.88	0.70	1.10	0.24	1.13
KEYSER	88	27	49		0.91		1.11	0.13	
MOOREFIELD	89	30	51		0.65		0.96	0.20	

State Average Temperature	54								
State Average Precipitation	1.73								

Sources:

Weather comments and data - Dept. of Commerce, National Oceanic & Atmospheric Administration National Weather Service, Charleston, WV.

Fruit comments - Stephen S. Miller, Ph.D. Research Horticulturist, Appalachian Fruit Research Station.



USDA-NASS
 West Virginia Field Office
 Phone: (800) 535-7088
 Fax: (304) 558-0297
 Homepage: <http://www.nass.usda.gov/wv>

CROP-WEATHER BULLETIN



In Cooperation with:
 US Department of Commerce-NOAA
 USDA Farm Service Agency
 WV Cooperative Extension Service
 WV Dept. of Agriculture

SOURCE: USDA/NASS West Virginia Field Office
 RELEASED: April 19, 2011

VOL. 11 NO.6
 FOR WEEK OF: April 11 - April 17

GENERAL

Very wet spring weather continued for the Mountain State this week. In fact, this was the wettest week since last December. A slow moving storm system crept over the region dumping as much as four inches in some locations. Nearly every site had over two inches of precipitation. There was, however, a narrow band of 'drier' sites in the southern coalfields. Beckley and Pineville had less than one inch. Temperatures were a bit above the normal for this time of year. Afternoon highs at most sites managed to reach the low to mid 80s for a couple of days. Overnight lows in the 30s later in the week, following the passage of a strong cold front, kept the state average from being higher.

Temperatures: Moorefield had the highest recorded temperature of 95 degrees. Elkins, Marlinton, and Beckley all had the lowest recorded temperature of 30 degrees. The state average temperature was 54 degrees.

Precipitation: Martinsburg had the highest recorded amount of precipitation with 4.06 inches. Beckley had the lowest recorded precipitation with 0.72 of an inch. The state average precipitation was 2.30 inches.

Number of days suitable for fieldwork averaged 3 days last week. Total acres plowed that are intended for spring planted crops were 41 percent complete, compared with 56 percent in 2010 and 51 percent for the 5-yr average.

TOPSOIL MOISTURE CONDITION

	Very Short	Short	Adequate	Surplus
	PERCENT			
Current Week	--	--	58	42
Last Week	--	7	78	15
Last Year	--	25	75	--

SUPPLIES

Hay and roughage supplies ranged from very short to surplus, but were reported as mostly adequate. Feed grain supplies ranged from very short to adequate, but were reported as mostly adequate. Farm activities included: field preparation and planting, planting fruit trees, building and repairing fences, cleaning up wind and flash-flood damage, calving, lambing and kidding.

CROP AND LIVESTOCK CONDITIONS

	Very Poor	Poor	Fair	Good	Exc
	PERCENT				
Cattle & Calves	--	2	33	60	5
Sheep & Lambs	--	1	36	59	4
Apples	--	--	37	61	2
Peaches	--	--	41	58	1
Hay	--	8	57	35	--
Wheat	5	12	29	52	2
Pasture	1	26	54	18	1

FRUIT

The period began with near record highs in the 80s and ended with heavy rains and high winds with some damaging thunderstorms in the region. Most apples are showing early bloom, while peaches are in full bloom or late bloom. In general conditions have not been good for pollination with high winds occurring on those days with warm, sunny conditions when bee activity would be expected. Apple conditions ranged from fair to excellent with most orchards in good condition. Peach conditions ranged from fair to excellent with most orchards in good condition.

GRAINS and HAY

Corn was 5 percent planted, compared with 6 percent last year and 5 percent for the 5-yr average. Winter wheat conditions ranged from very poor to excellent, but most fields were reported in good condition. Hay conditions ranged from poor to good, but fields were reported in mostly fair condition.

LIVESTOCK and PASTURE

Cattle conditions ranged from poor to excellent, but most herds were reported in good condition. Cattle were 82 percent calved, compared with 91 percent last year and 89 percent for the 5-yr average. Sheep conditions ranged from poor to excellent, but most flocks were reported in good condition. Sheep were 83 percent lambled, compared with 90 percent last year and 90 percent for the 5-yr average. Pasture conditions ranged from very poor to excellent, but fields were reported in mostly fair condition.

HISTORICAL CROP PROGRESS

YEAR	CORN	PERCENT OF TOTAL ACRES PREPARED FOR SPRING PLANTING
	PLANTED	
2011	5	41
2010	6	56
5 YR AVG	5	51



Temperature and Precipitation Data for the Week Ending 04-17-11

Station	Temperature				Precipitation				
	High	Low	Weekly Average	Weekly Departure	Week's Total	Week's Norm	Since April 1st 2011	Same Week Last Year	Season Normal
--NORTHWEST--									
WHEELING	75	34	54		2.26		3.70	0.24	
PARKERSBURG	85	38	56	3	2.30	0.73	3.91	0.51	1.95
CRESTON	83	31	55		2.80		4.76	0.62	
--NORTHCENTRAL--									
MORGANTOWN	83	35	55		2.81		4.84	0.65	
CLARKSBURG	85	34	55	5	2.39	0.77	4.25	0.87	2.06
BELINGTON	83	35	51		2.82		5.66	1.55	
WESTON	84	35	54		1.95		3.63	0.85	
--SOUTHWEST--									
WILLIAMSON	88	38	57		2.62		5.11	0.72	
HUNTINGTON	86	37	58	4	3.19	0.73	5.57	0.88	1.91
CHARLESTON	87	34	57	3	1.54	0.70	3.84	1.45	1.89
RIPLEY	84	35	56		2.84		4.88	0.98	
--CENTRAL--									
TERRA ALTA	77	33	48		2.10		3.58	1.79	
ELKINS	84	30	51	3	2.62	0.77	4.46	1.15	2.04
MARLINTON	78	30	48		3.12		4.71	1.28	
BECKLEY	80	30	51	3	0.72	0.77	3.80	0.67	1.93
--SOUTHERN--									
PINEVILLE	84	35	55		0.88		5.66	0.61	
BLUEFIELD	82	31	54	1	1.55	0.77	3.97	0.86	1.98
WHITE SUL SP	83	33	54		1.85		4.20	1.22	
BLUESTONE DAM	83	40	56		1.12		3.66	0.33	
--NORTHEASTERN--									
MARTINSBURG	84	36	54	1	4.06	0.70	5.16	0.38	1.83
KEYSER	91	34	53		2.92		4.03	0.48	
MOOREFIELD	95	32	55		2.08		3.04	0.34	
State Average Temperature	54								
State Average Precipitation	2.30								

Sources:

Weather comments and data - Dept. of Commerce, National Oceanic & Atmospheric Administration National Weather Service, Charleston, WV.

Fruit comments - Stephen S. Miller, Ph.D. Research Horticulturist, Appalachian Fruit Research Station.



USDA-NASS
 West Virginia Field Office
 Phone: (800) 535-7088
 Fax: (304) 558-0297
 Homepage: <http://www.nass.usda.gov/wv>

CROP-WEATHER BULLETIN



In Cooperation with:
 US Department of Commerce-NOAA
 USDA Farm Service Agency
 WV Cooperative Extension Service
 WV Dept. of Agriculture

SOURCE: USDA/NASS West Virginia Field Office
 RELEASED: April 26, 2011

VOL. 11 NO.7
 FOR WEEK OF: April 18 - April 24

GENERAL

This was yet another week of very wet weather. Once again, precipitation totals were well above normal. Several locations recorded over two inches of rain and four sites reported over three inches. Precipitation normals for this time of year range from 0.73 to 0.80 of an inch. As with the previous week, flood watches and warnings were common. The state average temperature was up five degrees from last week. The main ingredient for the increase was the warmer overnight lows. Cloudy skies and warm southerly breezes kept overnight lows from plunging to lower numbers. The area most near the normal for this time of year was the Eastern Panhandle where overnight lows were a bit cooler.

Temperatures: Williamson had the highest recorded temperature of 87 degrees. Marlinton had the lowest recorded temperature of 32 degrees. The state average temperature was 59 degrees.

Precipitation: Creston had the highest recorded amount of precipitation with 3.61 inches. Bluefield had the lowest recorded precipitation with 0.20 of an inch. The state average precipitation was 1.85 inches.

Number of days suitable for fieldwork averaged 2 days last week. Total acres plowed that are intended for spring planted crops were 43 percent complete, compared with 72 percent in 2010 and 63 percent for the 5-yr average.

TOPSOIL MOISTURE CONDITION

	Very Short	Short	Adequate	Surplus
	PERCENT			
Current Week	--	--	59	41
Last Week	--	--	58	42
Last Year	1	34	64	1

SUPPLIES

Hay and roughage supplies ranged from very short to surplus, but were reported as mostly adequate. Feed grain supplies ranged from very short to adequate, but were reported as mostly adequate. Farm activities included: cleaning up flood debris from fence lines and roadways, repairing fences, rotating pastures, calving, lambing and kidding.

CROP AND LIVESTOCK CONDITIONS

	Very Poor	Poor	Fair	Good	Exc
	PERCENT				
Cattle & Calves	--	3	26	65	6
Sheep & Lambs	--	2	31	62	5
Apples	--	--	36	61	3
Peaches	--	--	41	58	1
Hay	3	6	54	34	3
Wheat	4	9	29	53	5
Pasture	2	12	51	32	3

FRUIT

In general, conditions for pollination have been poor with too many rainy or windy periods, which discourage bee activity. The WVU Experiment Station pathologist reports seven scab infection periods already this spring and conditions are right for fire blight infection in apples. Apple conditions ranged from fair to excellent with most orchards in good condition. Peach conditions ranged from fair to excellent with most orchards in good condition.

GRAINS and HAY

Corn was 6 percent planted, compared with 14 percent last year and 13 percent for the 5-yr average. Corn was 1 percent emerged, compared with 1 percent last year, 5-yr average comparison data not available. Winter wheat conditions ranged from very poor to excellent, but most fields were reported in good condition. Winter wheat was 1 percent headed, compared to 7 percent last year, 5-yr average comparison data not available. Hay conditions ranged from very poor to excellent, but fields were reported in mostly fair condition.

LIVESTOCK and PASTURE

Cattle conditions ranged from poor to excellent, but most herds were reported in good condition. Cattle were 88 percent calved, compared with 96 percent last year and 91 percent for the 5-yr average. Sheep conditions ranged from poor to excellent, but most flocks were reported in good condition. Sheep were 90 percent lambing, compared with 94 percent last year and 92 percent for the 5-yr average. Pasture conditions ranged from very poor to excellent, but fields were reported in mostly fair condition.

HISTORICAL CROP PROGRESS

YEAR	CORN		WHEAT	PERCENT OF TOTAL ACRES PREPARED FOR SPRING PLANTING
	PLANTED	EMERGED	HEADED	
2011	6	1	1	43
2010	14	1	7	72
5 YR AVG	13	N/A	N/A	63

N/A-Not Available

**West Virginia
Field
Office**



Temperature and Precipitation Data for the Week Ending 04-24-11

Station	Temperature				Precipitation				
	High	Low	Weekly Average	Weekly Departure	Week's Total	Week's Norm	Since April 1st 2011	Same Week Last Year	Season Normal

--NORTHWEST--									
WHEELING	74	39	58		1.48		5.18	0.55	
PARKERSBURG	77	44	61	6	3.31	0.77	7.22	0.76	2.72
CRESTON	75	36	58		3.61		8.37	1.46	

--NORTHCENTRAL--									
MORGANTOWN	75	43	60		2.56		7.40	1.71	
CLARKSBURG	76	41	60	8	3.12	0.80	7.37	1.58	2.86
BELINGTON	76	38	57		2.55		8.21	2.10	
WESTON	78	40	60		3.10		6.73	1.41	

--SOUTHWEST--									
WILLIAMSON	87	48	64		0.82		5.93	1.80	
HUNTINGTON	84	43	63	7	2.22	0.77	7.79	2.20	2.68
CHARLESTON	84	41	62	5	1.44	0.77	5.28	2.15	2.66
RIPLEY	78	40	60		2.70		7.58	1.77	

--CENTRAL--									
TERRA ALTA	71	35	55		2.82		6.40	2.62	
ELKINS	77	34	57	7	2.48	0.84	6.94	1.67	2.88
MARLINTON	75	32	52		1.00		5.71	2.13	
BECKLEY	79	40	59	9	0.26	0.81	4.06	1.85	2.74

--SOUTHERN--									
PINEVILLE	83	47	62		0.40		6.06	2.08	
BLUEFIELD	82	45	60	5	0.20	0.79	4.17	1.76	2.77
WHITE SUL SP	82	40	59		0.38		4.58	2.22	
BLUESTONE DAM	82	48	62		0.30		3.96	0.61	

--NORTHEASTERN--									
MARTINSBURG	83	39	57	1	1.89	0.73	7.05	1.11	2.56
KEYSER	82	37	58		2.68		6.71	1.38	
MOOREFIELD	83	36	59		1.33		4.37	0.98	

State Average Temperature	59								
State Average Precipitation	1.85								

Sources:
 Weather comments and data - Dept. of Commerce, National Oceanic & Atmospheric Administration National Weather Service, Charleston, WV.
 Fruit comments - Stephen S. Miller, Ph.D. Research Horticulturist, Appalachian Fruit Research Station.



USDA-NASS
 West Virginia Field Office
 Phone: (800) 535-7088
 Fax: (304) 558-0297
 Homepage: <http://www.nass.usda.gov/wv>

CROP-WEATHER BULLETIN



In Cooperation with:
 US Department of Commerce-NOAA
 USDA Farm Service Agency
 WV Cooperative Extension Service
 WV Dept. of Agriculture

SOURCE: USDA/NASS West Virginia Field Office
 RELEASED: May 2, 2011

VOL. 11 NO.8
 FOR WEEK OF: April 25 - May 1

GENERAL

The extremely wet weather continued in the Mountain State. Precipitation totals were all above normal and a few areas more than doubled average precipitation. This is due to the southwest flow of warm, moist air. The flow finally broke on Friday, creating relatively dry conditions for Friday and Saturday. There were three sites that received over two inches of precipitation this week. Because of the southwest flow, the temperatures remained above normal for this time of the year. Most sites ranged from 4 to 9 degrees above average. The highs reached the 80s, and two locations reported 90 degrees. The low temperatures dropped into the 30s for most stations, and a few mountain sites dipped below freezing.

Temperatures: Both Williamson and Keyser had the highest recorded temperature of 90 degrees. Marlinton had the lowest recorded temperature of 31 degrees. The state average temperature was 62 degrees.

Precipitation: Marlinton had the highest recorded amount of precipitation with 2.37 inches. Wheeling had the lowest recorded precipitation with 0.47 of an inch. The state average precipitation was 1.45 inches.

Number of days suitable for fieldwork averaged 2 days last week. Total acres plowed that are intended for spring planted crops were 44 percent complete, compared with 78 percent in 2010 and 72 percent for the 5-yr average.

TOPSOIL MOISTURE CONDITION

	Very Short	Short	Adequate	Surplus
	PERCENT			
Current				
Week	--	1	53	46
Last				
Week	--	--	59	41
Last				
Year	1	19	68	12

SUPPLIES

Hay and roughage supplies ranged from very short to surplus, but were reported as mostly adequate. Feed grain supplies ranged from very short to surplus, but were reported as mostly adequate. Farm activities included: cleaning up flood and wind damage, clearing debris from fence lines and roadways, building and repairing fences, rotating pastures, calving, lambing and kidding.

CROP AND LIVESTOCK CONDITIONS

	Very Poor	Poor	Fair	Good	Exc
	PERCENT				
Cattle & Calves	--	3	27	62	8
Sheep & Lambs	--	1	34	59	6
Apples	--	--	37	60	3
Peaches	--	--	41	58	1
Hay	2	6	63	27	2
Wheat	4	9	33	53	1
Pasture	1	11	56	26	6

FRUIT

Most apples have reached late bloom or petal fall. Peaches and cherries are at shuck split or slightly beyond. The recent wet and warm conditions have resulted in numerous scab infection periods and several fire blight infections for apple trees. Scab is also a concern for peaches and brown rot in cherries. A diligent spray schedule should be maintained to avoid these disease problems. Apple conditions ranged from fair to excellent with most orchards in good condition. Peach conditions ranged from fair to excellent with most orchards in good condition.

GRAINS and HAY

Corn was 6 percent planted, compared with 22 percent last year and 24 percent for the 5-yr average. Corn was 2 percent emerged, compared with 3 percent last year and 3 percent for the 5-yr average. Soybeans were 1 percent planted, compared with 5 percent last year and 5 percent for the 5-yr average. Winter wheat conditions ranged from very poor to excellent, but most fields were reported in good condition. Winter wheat was 6 percent headed, compared to 13 percent last year and 10 percent for the 5-yr average. Hay conditions ranged from very poor to excellent, but fields were reported in mostly fair condition.

LIVESTOCK and PASTURE

Cattle conditions ranged from poor to excellent, but most herds were reported in good condition. Cattle were 90 percent calved, comparison data not available. Sheep conditions ranged from poor to excellent, but most flocks were reported in good condition. Sheep were 92 percent lambed, comparison data not available. Pasture conditions ranged from very poor to excellent, but fields were reported in mostly fair condition.

HISTORICAL CROP PROGRESS

YEAR	CORN		SOYBEANS	WHEAT	PERCENT OF TOTAL ACRES PREPARED FOR SPRING PLANTING
	PLANTED	EMERGED	PLANTED	HEADED	
2011	6	2	1	6	44
2010	22	3	5	13	78
5 YR AVG	24	3	5	10	72

**West Virginia
Field
Office**



Temperature and Precipitation Data for the Week Ending 05-01-11

Station	Temperature				Precipitation				
	High	Low	Weekly Average	Weekly Departure	Week's Total	Week's Norm	Since April 1st 2011	Same Week Last Year	Season Normal
--NORTHWEST-----									
WHEELING	82	39	61		0.47		5.65	1.99	
PARKERSBURG	86	40	63	6	1.20	0.81	8.42	2.89	3.53
CRESTON	87	33	62		1.44		9.81	4.52	
--NORTHCENTRAL-----									
MORGANTOWN	85	40	63		1.27		8.67	3.86	
CLARKSBURG	87	36	63	9	1.17	0.87	8.54	3.59	3.73
BELINGTON	84	36	59		1.29		9.50	3.85	
WESTON	88	37	63		1.50		8.23	3.91	
--SOUTHWEST-----									
WILLIAMSON	90	44	68		1.90		7.83	5.05	
HUNTINGTON	86	40	64	6	1.66	0.86	9.45	6.18	3.54
CHARLESTON	89	35	63	5	2.10	0.82	7.38	4.50	3.48
RIPLEY	87	38	62		1.39		8.97	4.60	
--CENTRAL-----									
TERRA ALTA	81	36	58		1.10		7.50	4.68	
ELKINS	84	32	59	7	1.31	0.91	8.25	3.40	3.79
MARLINTON	80	31	55		2.37		8.08	2.77	
BECKLEY	82	32	59	7	1.29	0.87	5.35	3.44	3.61
--SOUTHERN-----									
PINEVILLE	87	43	63		1.58		7.64	4.19	
BLUEFIELD	85	35	61	4	1.17	0.86	5.34	3.30	3.63
WHITE SUL SP	86	34	61		1.51		6.09	2.78	
BLUESTONE DAM	86	39	64		1.13		5.09	1.65	
--NORTHEASTERN-----									
MARTINSBURG	86	46	63	5	2.23	0.81	9.28	3.06	3.37
KEYSER	90	42	62		1.04		7.75	2.57	
MOOREFIELD	89	38	62		1.77		6.14	2.06	
State Average Temperature	62								
State Average Precipitation	1.45								

Sources:
 Weather comments and data - Dept. of Commerce, National Oceanic & Atmospheric Administration National Weather Service, Charleston, WV.
 Fruit comments - Stephen S. Miller, Ph.D. Research Horticulturist, Appalachian Fruit Research Station.



USDA-NASS
 West Virginia Field Office
 Phone: (800) 535-7088
 Fax: (304) 558-0297
 Homepage: <http://www.nass.usda.gov/wv>

CROP-WEATHER BULLETIN



In Cooperation with:
 US Department of Commerce-NOAA
 USDA Farm Service Agency
 WV Cooperative Extension Service
 WV Dept. of Agriculture

SOURCE: USDA/NASS West Virginia Field Office
 RELEASED: May 9, 2011

VOL. 11 NO.9
 FOR WEEK OF: May 2 - 8

GENERAL

Temperatures took a dive this week as overcast skies and plenty of rain held readings below normal once again. Afternoon highs managed to reach the 70s to lower 80s for a couple of days, but it was the overnight lows that made the difference. Many sites had lows in the 30s for a couple of days and three reporting sites dipped below the freezing mark. Rainfall was again above normal with the southwestern section of the state receiving the most precipitation. Huntington topped the list. Since April 1st, most areas have had double the normal rainfall amounts for the season. Flood watches and warnings have been common.

Temperatures: Keyser had the highest recorded temperature of 87 degrees. Marlinton had the lowest recorded temperature of 29 degrees. The state average temperature was 55 degrees.

Precipitation: Huntington had the highest recorded amount of precipitation with 1.83 inches. Marlinton had the lowest recorded precipitation with 0.43 of an inch. The state average precipitation was 1.02 inches.

Number of days suitable for fieldwork averaged 3 days last week. Total acres plowed that are intended for spring planted crops were 45 percent complete, compared with 88 percent in 2010 and 79 percent for the 5-yr average.

TOPSOIL MOISTURE CONDITION

	Very Short	Short	Adequate	Surplus
	PERCENT			
Current Week	--	--	58	42
Last Week	--	1	53	46
Last Year	4	22	73	1

SUPPLIES

Hay and roughage supplies ranged from very short to surplus, but were reported as mostly adequate. Feed grain supplies ranged from very short to adequate, but were reported as mostly adequate. Farm activities included: planning home gardens, building and repairing fences, rotating pastures, calving, lambing and kidding.

CROP AND LIVESTOCK CONDITIONS

	Very Poor	Poor	Fair	Good	Exc
	PERCENT				
Cattle & Calves	--	4	33	58	5
Sheep & Lambs	--	3	35	58	4
Apples	--	--	37	59	4
Peaches	--	--	40	58	2
Hay	1	6	52	39	2
Wheat	--	9	40	48	3
Pasture	--	11	50	34	5

FRUIT

Peaches and cherries have passed the shuck split stage and normal cover sprays should begin. Peach set is good and hand thinning will be required. Apples continue to grow despite cooler temperatures during the reporting period. Most varieties have reached or are very near the 10 to 12 mm diameter stage of growth and are ready to be chemically thinned. Apple conditions ranged from fair to excellent with most orchards in good condition. Peach conditions ranged from fair to excellent with most orchards in good condition.

GRAINS and HAY

Corn was 10 percent planted, compared with 43 percent last year and 41 percent for the 5-yr average. Corn was 3 percent emerged, compared with 10 percent last year and 9 percent for the 5-yr average. Soybeans were 2 percent planted, compared with 7 percent last year and 8 percent for the 5-yr average. Winter wheat conditions ranged from poor to excellent, but most fields were reported in good condition. Winter wheat was 17 percent headed, compared to 31 percent last year and 19 percent for the 5-yr average. Hay conditions ranged from very poor to excellent, but fields were reported in mostly fair condition.

LIVESTOCK and PASTURE

Cattle conditions ranged from poor to excellent, but most herds were reported in good condition. Cattle were 93 percent calved, comparison data not available. Sheep conditions ranged from poor to excellent, but most flocks were reported in good condition. Sheep were 94 percent lambed, comparison data not available. Pasture conditions ranged from poor to excellent, but fields were reported in mostly fair condition.

HISTORICAL CROP PROGRESS

YEAR	CORN		SOYBEANS	WHEAT	PERCENT OF TOTAL ACRES PREPARED FOR SPRING PLANTING
	PLANTED	EMERGED	PLANTED	HEADED	
2011	10	3	2	17	45
2010	43	10	7	31	88
5 YR AVG	41	9	8	19	79

**West Virginia
Field
Office**



Temperature and Precipitation Data for the Week Ending 05-08-11

Station	Temperature				Precipitation				
	High	Low	Weekly Average	Weekly Departure	Week's Total	Week's Norm	Since April 1st 2011	Same Week Last Year	Season Normal
--NORTHWEST-----									
WHEELING	73	33	53		0.64		6.29	2.65	
PARKERSBURG	76	36	55	-5	0.89	0.88	9.31	3.27	4.41
CRESTON	78	34	54		1.33		11.14	4.76	
--NORTHCENTRAL-----									
MORGANTOWN	78	38	57		0.79		9.46	4.53	
CLARKSBURG	80	34	56	-1	0.82	0.96	9.36	3.71	4.69
BELINGTON	78	32	54		0.59		10.09	4.20	
WESTON	81	34	56		0.78		9.01	4.06	
--SOUTHWEST-----									
WILLIAMSON	80	42	58		1.51		9.34	5.15	
HUNTINGTON	78	32	55	-6	1.83	0.95	11.28	6.60	4.49
CHARLESTON	79	35	55	-4	1.59	0.92	8.97	4.85	4.40
RIPLEY	78	34	55		1.39		10.36	4.83	
--CENTRAL-----									
TERRA ALTA	76	33	52		0.66		8.16	5.28	
ELKINS	81	30	52	-3	0.53	1.00	8.78	3.76	4.79
MARLINTON	75	29	49		0.43		8.51	2.87	
BECKLEY	76	31	50	-5	1.80	0.93	7.15	3.65	4.54
--SOUTHERN-----									
PINEVILLE	80	39	55		1.53		9.17	4.24	
BLUEFIELD	79	33	53	-6	0.82	0.95	6.16	3.42	4.58
WHITE SUL SP	81	32	53		0.88		6.97	2.84	
BLUESTONE DAM	83	39	57		1.06		6.15	1.75	
--NORTHEASTERN-----									
MARTINSBURG	83	39	58	-2	0.81	0.90	10.09	3.21	4.27
KEYSER	87	37	57		0.90		8.65	2.69	
MOOREFIELD	86	37	58		0.89		7.03	2.06	
State Average Temperature	55								
State Average Precipitation	1.02								

Sources:
 Weather comments and data - Dept. of Commerce, National Oceanic & Atmospheric Administration National Weather Service, Charleston, WV.
 Fruit comments - Stephen S. Miller, Ph.D. Research Horticulturist, Appalachian Fruit Research Station.



USDA-NASS
 West Virginia Field Office
 Phone: (800) 535-7088
 Fax: (304) 558-0297
 Homepage: <http://www.nass.usda.gov/wv>

CROP-WEATHER BULLETIN



In Cooperation with:
 US Department of Commerce-NOAA
 USDA Farm Service Agency
 WV Cooperative Extension Service
 WV Dept. of Agriculture

SOURCE: USDA/NASS West Virginia Field Office
 RELEASED: May 16, 2011

VOL. 11 NO.10
 FOR WEEK OF: May 9 - 15

GENERAL

The state warmed up this week as temperatures rebounded from last week. All stations were above average with the Eastern Panhandle being just one degree over, and both Charleston and Clarksburg were seven degrees above normal. Most sites recorded temperatures in the mid to upper 80s. Thanks to an unsettled weather pattern, another rainy week continued across the state. Most stations saw rain almost every day, but the precipitation amounts were both above and below average. Some of the precipitation that fell was associated with strong thunderstorms and heavy downpours.

Temperatures: Williamson had the highest recorded temperature of 90 degrees. Elkins had the lowest recorded temperature of 38 degrees. The state average temperature was 65 degrees.

Precipitation: Huntington had the highest recorded amount of precipitation with 3.27 inches. Creston had the lowest recorded precipitation with 0.21 of an inch. The state average precipitation was 1.24 inches.

Number of days suitable for fieldwork averaged 3 days last week. Total acres plowed that are intended for spring planted crops were 48 percent complete, compared with 90 percent in 2010 and 86 percent for the 5-yr average.

TOPSOIL MOISTURE CONDITION

	Very Short	Short	Adequate	Surplus
	PERCENT			
Current Week	--	--	47	53
Last Week	--	--	58	42
Last Year	2	9	78	11

SUPPLIES

Hay and roughage supplies ranged from very short to surplus, but were reported as mostly adequate. Feed grain supplies ranged from very short to adequate, but were reported as mostly adequate. Farm activities included: planning home gardens, building and repairing fences, rotating pastures, calving, lambing and kidding.

FRUIT

Entomologists studying the brown marmorated stink bug (BMSB) have observed large numbers

CROP AND LIVESTOCK CONDITIONS

	Very Poor	Poor	Fair	Good	Exc
	PERCENT				
Cattle & Calves	--	2	19	74	5
Sheep & Lambs	--	1	16	78	5
Apples	--	--	37	59	4
Peaches	--	--	40	58	2
Hay	1	4	30	58	7
Wheat	--	4	43	49	4
Pasture	--	5	33	55	7

FRUIT cont.

feeding on peaches growing in unsprayed orchards. It appears they prefer peaches over apples at this stage of growth. Currently, fruit set on apple and peach varieties appear quite good. Cherry fruit set is adequate, although some sweet cherry varieties have a rather light set, possibly due to windy, cool conditions that occurred around bloom time. Apple conditions ranged from fair to excellent with most orchards in good condition. Peach conditions ranged from fair to excellent with most orchards in good condition.

GRAINS and HAY

Corn was 21 percent planted, compared with 72 percent last year and 61 percent for the 5-yr average. Corn was 10 percent emerged, compared with 44 percent last year and 24 percent for the 5-yr average. Soybeans were 4 percent planted, compared with 59 percent last year and 31 percent for the 5-yr average. Winter wheat conditions ranged from poor to excellent, but most fields were reported in fair to mostly good condition. Winter wheat was 44 percent headed, compared to 84 percent last year and 46 percent for the 5-yr average. Hay conditions ranged from very poor to excellent, but fields were reported in mostly good condition.

LIVESTOCK and PASTURE

Cattle conditions ranged from poor to excellent, but most herds were reported in good condition. Cattle were 95 percent calved, comparison data not available. Sheep conditions ranged from poor to excellent, but most flocks were reported in good condition. Sheep were 95 percent lambed, comparison data not available. Pasture conditions ranged from poor to excellent, but fields were reported in mostly good condition.

HISTORICAL CROP PROGRESS

YEAR	CORN		SOYBEANS	WHEAT	PERCENT OF TOTAL ACRES PREPARED FOR SPRING PLANTING
	PLANTED	EMERGED	PLANTED	HEADED	
2011	21	10	4	44	48
2010	72	44	59	84	90
5 YR AVG	61	24	31	46	86

**West Virginia
Field
Office**



Temperature and Precipitation Data for the Week Ending 05-15-11

Station	Temperature				Precipitation				
	High	Low	Weekly Average	Weekly Departure	Week's Total	Week's Norm	Since April 1st 2011	Same Week Last Year	Season Normal

--NORTHWEST-----									
WHEELING	84	43	66		1.88		8.17	3.50	
PARKERSBURG	86	48	67	6	0.45	0.94	9.76	4.88	5.35
CRESTON	85	42	67		0.21		11.35	6.94	

--NORTHCENTRAL-----									
MORGANTOWN	84	46	67		2.87		12.33	5.81	
CLARKSBURG	82	44	66	7	0.75	1.04	10.11	4.99	5.73
BELINGTON	80	40	64		1.10		11.19	5.37	
WESTON	83	45	66		0.98		9.99	5.18	

--SOUTHWEST-----									
WILLIAMSON	90	53	70		1.04		10.38	6.15	
HUNTINGTON	88	48	68	6	3.27	1.02	14.55	9.38	5.51
CHARLESTON	88	47	68	7	0.39	0.98	9.36	7.12	5.38
RIPLEY	89	42	68		0.86		11.22	7.82	

--CENTRAL-----									
TERRA ALTA	79	46	63		1.75		9.91	7.57	
ELKINS	82	38	63	6	1.47	1.07	10.25	5.14	5.86
MARLINTON	78	40	60		1.15		9.66	8.75	
BECKLEY	82	40	62	5	1.04	0.98	8.19	5.98	5.52

--SOUTHERN-----									
PINEVILLE	83	45	66		1.16		10.33	5.84	
BLUEFIELD	83	40	64	4	1.20	0.98	7.36	5.26	5.56
WHITE SUL SP	81	40	63		1.35		8.32	4.48	
BLUESTONE DAM	84	43	67		1.93		8.08	3.94	

--NORTHEASTERN-----									
MARTINSBURG	77	43	63	1	0.75	0.97	10.84	3.99	5.24
KEYSER	83	41	64		1.15		9.80	3.81	
MOOREFIELD	82	41	64		0.45		7.48	3.21	

State Average Temperature	65								
State Average Precipitation	1.24								

Sources:
 Weather comments and data - Dept. of Commerce, National Oceanic & Atmospheric Administration National Weather Service, Charleston, WV.
 Fruit comments - Stephen S. Miller, Ph.D. Research Horticulturist, Appalachian Fruit Research Station.



USDA-NASS
 West Virginia Field Office
 Phone: (800) 535-7088
 Fax: (304) 558-0297
 Homepage: <http://www.nass.usda.gov/wv>

CROP-WEATHER BULLETIN



In Cooperation with:
 US Department of Commerce-NOAA
 USDA Farm Service Agency
 WV Cooperative Extension Service
 WV Dept. of Agriculture

SOURCE: USDA/NASS West Virginia Field Office
 RELEASED: May 23, 2011

VOL. 11 NO.11
 FOR WEEK OF: May 16 - 22

GENERAL

Despite temperatures reaching into the mid and upper 80s by week's end, average temperatures for the week were at or below normal. Cold air blanketed the state early in the week with highs only in the 50s and 60s as strong low pressure lingered over the eastern United States. Later, warmer air and sunshine resulted in more seasonable weather to round out the week. The wet weather trend continued. Although a couple of sites had less than an inch of precipitation, the Eastern Panhandle pushed the state average higher as all of the reporting locations had well over three inches. Again, the persistent low pressure was responsible for heavy rain in that area.

Temperatures: Moorefield had the highest recorded temperature of 89 degrees. Wheeling had the lowest recorded temperature of 41 degrees. The state average temperature was 60 degrees.

Precipitation: Moorefield had the highest recorded amount of precipitation with 3.74 inches. Pineville had the lowest recorded precipitation with 0.57 of an inch. The state average precipitation was 1.65 inches.

Number of days suitable for fieldwork averaged 2 days last week. Total acres plowed that are intended for spring planted crops were 57 percent complete, compared with 92 percent in 2010 and 89 percent for the 5-yr average.

TOPSOIL MOISTURE CONDITION

	Very Short	Short	Adequate	Surplus
	PERCENT			
Current Week	--	--	53	47
Last Week	--	--	47	53
Last Year	--	5	77	18

SUPPLIES

Hay and roughage supplies ranged from short to surplus but were reported as mostly adequate. Feed grain supplies ranged from very short to adequate but were reported as mostly adequate. Farm activities included: planting corn, soybeans, and home gardens, repairing fences, and performing equipment maintenance.

CROP AND LIVESTOCK CONDITIONS

	Very Poor	Poor	Fair	Good	Exc
	PERCENT				
Cattle & Calves	--	2	17	76	5
Sheep & Lambs	--	2	8	85	5
Apples	--	--	35	62	3
Peaches	--	--	37	61	2
Hay	--	2	33	55	10
Wheat	--	5	55	40	--
Pasture	--	6	29	51	14

FRUIT

Wet weather has resulted in numerous scab and fire blight infection periods for apple trees. The brown marmorated stink bug has been observed feeding on peaches in some area orchards. The effects of chemical thinners applied in the first week of May are becoming evident, and there appears to be some natural fruit drop beginning as well. For backyard growers, the time is near to begin hand thinning both apples and peaches. Apple conditions ranged from fair to excellent with most orchards in good condition. Peach conditions ranged from fair to excellent with most orchards in good condition.

GRAINS and HAY

Corn was 36 percent planted, compared with 77 percent last year and 72 percent for the 5-yr average. Corn was 18 percent emerged, compared with 51 percent last year and 37 percent for the 5-yr average. Soybeans were 12 percent planted, compared with 68 percent last year and 44 percent for the 5-yr average. Soybeans were 1 percent emerged, compared with 45 percent last year and 14 percent for the 5-yr average. Winter wheat conditions ranged from poor to good, but most fields were reported in fair condition. Winter wheat was 50 percent headed, compared to 87 percent last year and 62 percent for the 5-yr average. Hay conditions ranged from poor to excellent, but fields were reported in mostly good condition.

LIVESTOCK and PASTURE

Cattle conditions ranged from poor to excellent, but most herds were reported in good condition. Sheep conditions ranged from poor to excellent, but most flocks were reported in good condition. Pasture conditions ranged from poor to excellent, but fields were reported in mostly good condition.

HISTORICAL CROP PROGRESS

YEAR	CORN		SOYBEANS		WHEAT	PERCENT OF TOTAL ACRES PREPARED FOR SPRING PLANTING
	PLANTED	EMERGED	PLANTED	EMERGED	HEADED	
2011	36	18	12	1	50	57
2010	77	51	68	45	87	92
5 YR AVG	72	37	44	14	62	89

**West Virginia
Field
Office**



Temperature and Precipitation Data for the Week Ending 05-22-11

Station	Temperature				Precipitation				
	High	Low	Weekly Average	Weekly Departure	Week's Total	Week's Norm	Since April 1st 2011	Same Week Last Year	Season Normal

--NORTHWEST-----									
WHEELING	83	41	60		1.16		9.33	4.81	
PARKERSBURG	88	48	61	-3	1.31	0.98	11.07	6.84	6.33
CRESTON	88	47	59		1.57		12.92	8.18	

--NORTHCENTRAL-----									
MORGANTOWN	85	47	62		1.07		13.40	7.72	
CLARKSBURG	86	51	61	0	1.64	1.05	11.75	6.18	6.78
BELINGTON	80	45	58		1.55		12.74	8.28	
WESTON	85	49	60		1.42		11.41	6.59	

--SOUTHWEST-----									
WILLIAMSON	86	47	61		1.14		11.52	7.66	
HUNTINGTON	88	46	61	-5	1.53	1.05	16.08	9.76	6.56
CHARLESTON	88	46	59	-4	1.05	1.00	10.41	9.64	6.38
RIPLEY	88	47	60		1.69		12.91	9.08	

--CENTRAL-----									
TERRA ALTA	79	45	58		1.39		11.30	9.44	
ELKINS	83	42	58	-1	2.44	1.12	12.69	7.32	6.98
MARLINTON	80	44	55		1.93		11.59	10.10	
BECKLEY	81	42	54	-5	0.68	0.98	8.87	6.94	6.50

--SOUTHERN-----									
PINEVILLE	85	47	58		0.57		10.90	7.72	
BLUEFIELD	83	42	55	-7	1.00	0.99	8.36	5.87	6.55
WHITE SUL SP	85	47	58		2.08		10.40	5.25	
BLUESTONE DAM	86	48	60		0.60		8.68	4.84	

--NORTHEASTERN-----									
MARTINSBURG	81	51	64	0	3.40	0.98	14.24	5.60	6.22
KEYSER	86	49	63		3.26		13.06	6.06	
MOOREFIELD	89	50	64		3.74		11.22	4.36	

State Average Temperature	60								
State Average Precipitation	1.65								

Sources:
 Weather comments and data - Dept. of Commerce, National Oceanic & Atmospheric Administration National Weather Service, Charleston, WV.
 Fruit comments - Stephen S. Miller, Ph.D. Research Horticulturist, Appalachian Fruit Research Station.



USDA-NASS
 West Virginia Field Office
 Phone: (800) 535-7088
 Fax: (304) 558-0297
 Homepage: <http://www.nass.usda.gov/wv>

CROP-WEATHER BULLETIN



In Cooperation with:
 US Department of Commerce-NOAA
 USDA Farm Service Agency
 WV Cooperative Extension Service
 WV Dept. of Agriculture

SOURCE: USDA/NASS West Virginia Field Office
 RELEASED: May 31, 2011

VOL. 11 NO.12
 FOR WEEK OF: May 23 - 29

GENERAL

This week's temperatures climbed well above normal across the state, possibly helped by near or above 90 degree high temperatures near the end of the week. Earlier in the week, the temperatures rose and fell as a series of fronts passed through the area. Most stations saw lows in the 50s and low 60s, with Elkins being the only station to dip into the 40s. The warmest temperatures recorded were in the southwestern part of the state as well as the Eastern Panhandle. Because most of the precipitation fell as scattered showers, total amounts varied across the State.

Temperatures: Williamson had the highest recorded temperature of 94 degrees. Elkins had the lowest recorded temperature of 49 degrees. The state average temperature was 70 degrees.

Precipitation: Keyser had the highest recorded amount of precipitation with 3.36 inches. Wheeling had the lowest recorded precipitation with 0.22 of an inch. The state average precipitation was 1.10 inches.

Number of days suitable for fieldwork averaged 4 days last week. Total acres plowed that are intended for spring planted crops were 76 percent complete, compared with 95 percent in 2010 and 92 percent for the 5-yr average.

TOPSOIL MOISTURE CONDITION

	Very Short	Short	Adequate	Surplus
	PERCENT			
Current Week	--	--	74	26
Last Week	--	--	53	47
Last Year	--	3	87	10

SUPPLIES

Hay and roughage supplies ranged from very short to surplus but were reported as mostly adequate. Feed grain supplies ranged from very short to adequate but were reported as mostly adequate. Intense storms and hot weather gave way to a variety of farming projects. While some farmers were forced to move uprooted trees, many took advantage of the warm weather and began to cut hay and plant crops. Some grains were chopped by farmers for forage.

FRUIT

Natural fruit drop is occurring on apple trees, and weather conditions have been such to encourage drop. It is time to hand thin peaches as we are near-

CROP AND LIVESTOCK CONDITIONS

	Very Poor	Poor	Fair	Good	Exc
	PERCENT				
Cattle & Calves	--	2	11	81	6
Sheep & Lambs	--	1	7	89	3
Apples	--	1	37	60	2
Peaches	--	--	40	58	2
Hay	1	3	25	53	18
Wheat	--	4	39	53	4
Pasture	--	4	22	44	30

FRUIT cont.

ing the beginning of the pit hardening stage. Damage has been reported in several regional orchards from the brown marmorated stink bug. The appearance of small gum balls on the surface of the fruit is a good indicator of stink bug feeding. The continued wet weather has kept the scab fungus active and, high temperatures encourage more powdery mildew which attacks apples, peaches, cherries, and grapes. Apple conditions ranged from poor to excellent with most orchards in good condition. Peach conditions ranged from fair to excellent with most orchards in good condition.

GRAINS and HAY

Corn was 51 percent planted, compared with 89 percent last year and 84 percent for the 5-yr average. Corn was 31 percent emerged, compared with 62 percent last year and 57 percent for the 5-yr average. Soybeans were 32 percent planted, compared with 80 percent last year and 66 percent for the 5-yr average. Soybeans were 2 percent emerged, compared with 71 percent last year and 37 percent for the 5-yr average. Winter wheat conditions ranged from poor to excellent, but most fields were reported in good condition. Winter wheat was 65 percent headed, compared to 93 percent last year and 84 percent for the 5-yr average. Hay conditions ranged from very poor to excellent, but fields were reported in mostly good condition. First-cutting was 13 percent complete, compared with 16 percent last year and 19 percent for the 5-yr average.

LIVESTOCK and PASTURE

Cattle conditions ranged from poor to excellent, but most herds were reported in good condition. Sheep conditions ranged from poor to excellent, but most flocks were reported in good condition. Pasture conditions ranged from poor to excellent, but fields were reported in mostly good condition.

HISTORICAL CROP PROGRESS

YEAR	CORN		SOYBEANS		WHEAT	HAY	PERCENT OF TOTAL ACRES PREPARED FOR SPRING PLANTING
	PLANTED	EMERGED	PLANTED	EMERGED	HEADED	1 ST CUT	
2011	51	31	32	2	65	13	76
2010	89	62	80	71	93	16	95
5 YR AVG	84	57	66	37	84	19	92

**West Virginia
Field
Office**



Temperature and Precipitation Data for the Week Ending 05-29-11

Station	Temperature				Precipitation				
	High	Low	Weekly Average	Weekly Departure	Week's Total	Week's Norm	Since April 1st 2011	Same Week Last Year	Season Normal

--NORTHWEST-----									
WHEELING	88	61	72		0.22		9.55	4.81	
PARKERSBURG	88	60	73	7	0.46	0.98	11.53	6.84	7.31
CRESTON	91	55	69		0.62		13.54	8.26	

--NORTHCENTRAL-----									
MORGANTOWN	87	61	72		0.63		14.03	7.87	
CLARKSBURG	90	58	71	8	0.68	1.05	12.43	6.30	7.83
BELINGTON	87	54	69		0.63		13.37	8.51	
WESTON	90	56	71		1.13		12.54	6.59	

--SOUTHWEST-----									
WILLIAMSON	94	57	72		1.55		13.07	7.86	
HUNTINGTON	91	56	71	4	1.25	1.03	17.33	10.43	7.59
CHARLESTON	91	54	70	4	0.40	0.99	10.81	9.65	7.37
RIPLEY	91	55	70		1.06		13.97	9.08	

--CENTRAL-----									
TERRA ALTA	83	52	67		0.95		12.25	9.44	
ELKINS	87	49	68	7	0.49	1.12	13.18	7.34	8.10
MARLINTON	81	52	64		0.88		12.47	11.68	
BECKLEY	83	50	65	5	0.71	0.91	9.58	7.51	7.41

--SOUTHERN-----									
PINEVILLE	87	57	70		2.11		13.01	7.77	
BLUEFIELD	86	55	67	3	2.96	0.98	11.32	6.16	7.53
WHITE SUL SP	86	55	69		0.93		11.33	5.66	
BLUESTONE DAM	88	59	72		1.36		10.04	4.98	

--NORTHEASTERN-----									
MARTINSBURG	90	60	73	7	0.76	0.96	15.00	5.68	7.18
KEYSER	92	59	73		3.36		16.42	6.37	
MOOREFIELD	92	56	73		1.06		12.28	6.24	

State Average Temperature	70								
State Average Precipitation	1.10								

Sources:
 Weather comments and data - Dept. of Commerce, National Oceanic & Atmospheric Administration National Weather Service, Charleston, WV.
 Fruit comments - Stephen S. Miller, Ph.D. Research Horticulturist, Appalachian Fruit Research Station.



USDA-NASS
 West Virginia Field Office
 Phone: (800) 535-7088
 Fax: (304) 558-0297
 Homepage: <http://www.nass.usda.gov/wv>

CROP-WEATHER BULLETIN



In Cooperation with:
 US Department of Commerce-NOAA
 USDA Farm Service Agency
 WV Cooperative Extension Service
 WV Dept. of Agriculture

SOURCE: USDA/NASS West Virginia Field Office
 RELEASED: June 7, 2011

VOL. 11 NO.13
 FOR WEEK OF: May 30 - June 5

GENERAL

Although it seemed like a much warmer week, the state average temperature was only one degree higher than last week. Once again, most areas reached into the lower 90s at some point. Rainfall was a good bit lower than the previous week. The state average precipitation was only 0.38 of an inch; this was quite a drop from the unusually wet spring experienced across the Mountain State. Only three reporting sites had over an inch of rain and three had no rain at all. Extreme southern communities had the lowest amounts. The active weather pattern we experienced through the spring has been replaced by high pressure over our region. That meant very warm temperatures, little rain and very little wind. This is an unusual setting for the first week of June.

Temperatures: Keyser had the highest recorded temperature of 97 degrees. Marlinton had the lowest recorded temperature of 40 degrees. The state average temperature was 71 degrees.

Precipitation: Parkersburg had the highest recorded amount of precipitation with 1.62 inches. Williamson, Pineville, and Bluefield all had zero recorded precipitation. The state average precipitation was 0.38 of an inch.

Number of days suitable for fieldwork averaged 6 days last week. Total acres plowed that are intended for spring planted crops were 90 percent complete, comparison data not available.

TOPSOIL MOISTURE CONDITION

	Very Short	Short	Adequate	Surplus
	PERCENT			
Current Week	--	6	83	11
Last Week	--	--	74	26
Last Year	--	2	82	16

SUPPLIES

Hay and roughage supplies ranged from short to surplus but were reported as mostly adequate. Feed grain supplies ranged from very short to adequate but were reported as mostly adequate. Many farmers found the warm weather to be a perfect invitation for cutting hay. Other farmers took to planting corn, vaccinating animals, and shearing sheep, enjoying the otherwise sunny skies. However, as the week came to a close, a night of heavy storms swept across the state, knocking down and twisting some of the standing hay fields and quenching the parched earth.

FRUIT

The "June drop" (the natural drop) on apples is about

CROP AND LIVESTOCK CONDITIONS

	Very Poor	Poor	Fair	Good	Exc
	PERCENT				
Cattle & Calves	--	2	15	78	5
Sheep & Lambs	--	1	12	85	2
Apples	--	1	37	61	1
Peaches	--	--	41	58	1
Hay	--	2	29	56	13
Wheat	--	4	56	40	--
Pasture	--	2	27	48	23

FRUIT cont.

complete. Fruit size is advancing nicely at this stage. Scab is evident on both fruit and foliage. Treatments to control secondary scab infection should continue. Stink bug injury is being reported by peach growers, especially where peaches border woodlots or fence rows. Growers who have employed a minimal spray program are seeing more damage than those who have used an aggressive program to control the brown marmorated stink bugs. Apple conditions ranged from poor to excellent with most orchards in good condition. Peach conditions ranged from fair to excellent with most orchards in good condition.

GRAINS and HAY

Corn was 69 percent planted, compared with 92 percent last year and 89 percent for the 5-yr average. Corn was 39 percent emerged, compared with 70 percent last year and 71 percent for the 5-yr average. Soybeans were 50 percent planted, compared with 81 percent last year and 73 percent for the 5-yr average. Soybeans were 3 percent emerged, compared with 73 percent last year and 57 percent for the 5-yr average. Winter wheat conditions ranged from poor to good, but most fields were reported in fair condition. Winter wheat was 75 percent headed, compared to 96 percent last year and 89 percent for the 5-yr average. Fields were 1 percent harvested for grain, compared to 1 percent last year, 5-yr average comparison data not available. Hay conditions ranged from poor to excellent, but fields were reported in mostly good condition. First-cutting was 32 percent complete, compared with 23 percent last year and 28 percent for the 5-yr average.

LIVESTOCK and PASTURE

Cattle conditions ranged from poor to excellent, but most herds were reported in good condition. Sheep conditions ranged from poor to excellent, but most flocks were reported in good condition. Pasture conditions ranged from poor to excellent, but fields were reported in mostly good condition.

HISTORICAL CROP PROGRESS

YEAR	CORN		SOYBEANS		WHEAT		HAY	PERCENT OF TOTAL ACRES PREPARED FOR SPRING PLANTING
	PLANTED	EMERGED	PLANTED	EMERGED	HEADED	HARV.		
2011	69	39	50	3	75	1	32	90
2010	92	70	81	73	96	1	23	N/A
5 YR AVG	89	71	73	57	89	N/A	28	N/A

**West Virginia
Field
Office**



Temperature and Precipitation Data for the Week Ending 06-05-11

Station	Temperature				Precipitation				
	High	Low	Weekly Average	Weekly Departure	Week's Total	Week's Norm	Since April 1st 2011	Same Week Last Year	Season Normal

--NORTHWEST-----									
WHEELING	96	48	72		0.24		9.79	7.78	
PARKERSBURG	92	51	74	6	1.62	0.98	13.15	10.28	8.29
CRESTON	92	47	70		1.22		14.76	10.25	

--NORTHCENTRAL-----									
MORGANTOWN	93	50	71		0.37		14.40	10.32	
CLARKSBURG	92	50	72	7	0.11	1.05	12.54	8.29	8.88
BELINGTON	88	48	68		0.35		13.72	10.00	
WESTON	93	49	71		0.27		12.81	8.85	

--SOUTHWEST-----									
WILLIAMSON	95	57	76		0.00		13.07	9.36	
HUNTINGTON	92	56	76	7	1.37	0.95	18.70	11.12	8.54
CHARLESTON	92	51	73	5	0.04	0.98	10.85	10.37	8.35
RIPLEY	93	53	73		0.38		14.35	10.34	

--CENTRAL-----									
TERRA ALTA	86	43	67		0.81		13.06	13.37	
ELKINS	88	42	66	3	0.17	1.12	13.35	9.25	9.22
MARLINTON	86	40	64		0.14		12.61	12.45	
BECKLEY	84	47	66	4	0.02	0.84	9.60	9.21	8.25

--SOUTHERN-----									
PINEVILLE	90	52	73		0.00		13.01	9.35	
BLUEFIELD	89	50	70	4	0.00	0.93	11.32	6.91	8.46
WHITE SUL SP	91	45	69		0.39		11.72	6.31	
BLUESTONE DAM	90	54	73		0.14		10.18	5.92	

--NORTHEASTERN-----									
MARTINSBURG	94	50	73	4	0.01	0.89	15.01	6.78	8.07
KEYSER	97	46	73		0.20		16.62	8.39	
MOOREFIELD	95	47	72		0.45		12.73	6.73	

State Average Temperature	71								
State Average Precipitation	0.38								

Sources:
 Weather comments and data - Dept. of Commerce, National Oceanic & Atmospheric Administration National Weather Service, Charleston, WV.
 Fruit comments - Stephen S. Miller, Ph.D. Research Horticulturist.



USDA-NASS
 West Virginia Field Office
 Phone: (800) 535-7088
 Fax: (304) 558-0297
 Homepage: <http://www.nass.usda.gov/wv>

CROP-WEATHER BULLETIN



In Cooperation with:
 US Department of Commerce-NOAA
 USDA Farm Service Agency
 WV Cooperative Extension Service
 WV Dept. of Agriculture

SOURCE: USDA/NASS West Virginia Field Office
 RELEASED: June 13, 2011

VOL. 11 NO.14
 FOR WEEK OF: June 6 - June 12

GENERAL

Temperatures remained above normal this week. Strong high pressure allowed abundant sunshine and a weak, southerly flow kept warmer air over us for most of the week. Once again, all sites were above normal for the week and afternoon highs pushed into the 90s for most areas. Slightly lower temperatures were reported in the mountains. Precipitation was up this week. The heaviest rain fell over the extreme northern sections of the state. This was caused by storms arriving from the upper Midwest that were unable to push into central and southern counties. Later in the week, some communities along the Kentucky border received a soaking as a few strong cells developed over that region.

Temperatures: Keyser had the highest recorded temperature of 98 degrees. Marlinton and Terra Alta both had the lowest recorded temperature of 44 degrees. The state average temperature was 73 degrees.

Precipitation: Clarksburg had the highest recorded amount of precipitation with 1.62 inches. Martinsburg had the lowest recorded amount of precipitation with 0.13 of an inch. The state average precipitation was 0.76 of an inch.

Number of days suitable for fieldwork averaged 6 days last week. Total acres plowed that are intended for spring planted crops were 96 percent complete, comparison data not available.

TOPSOIL MOISTURE CONDITION

	Very Short	Short	Adequate	Surplus
PERCENT				
Current Week	--	7	89	4
Last Week	--	6	83	11
Last Year	--	2	76	22

SUPPLIES

Hay and roughage supplies ranged from short to surplus but were reported as mostly adequate. Feed grain supplies ranged from short to adequate but were reported as mostly adequate. Sunshine and few showers last week improved many pastures and were ideal days for planting crops and harvesting hay in most areas. Other farm activities included: fencing, vaccinating livestock, shearing sheep, cutting firewood and clearing brush, and working in home gardens.

FRUIT

Brown Marmorated Stink Bug (BMSB) damage can be found on both sweet cherries and peaches, especially on

CROP AND LIVESTOCK CONDITIONS

	Very Poor	Poor	Fair	Good	Exc
PERCENT					
Cattle & Calves	--	--	5	89	6
Sheep & Lambs	--	--	3	95	2
Apples	--	5	16	69	10
Peaches	--	5	20	65	10
Hay	--	1	23	58	18
Wheat	--	--	24	76	--
Pasture	--	2	26	48	24

FRUIT cont.

the fruits in the tops of the trees. Rotating chemistries for control of BMSB has been highly recommended. Apple scab continues as a problem following a spring which was ideal for scab development. Remember that continued use of pyrethroid sprays for BMSB can lead to increased populations for scale and woolly apple aphids. Natural fruit drop is about complete on apples and all hand thinning should be completed soon. Apple conditions ranged from poor to excellent with most orchards in good condition. Peach conditions ranged from poor to excellent with most orchards in good condition.

GRAINS and HAY

Corn was 88 percent planted, compared with 96 percent last year and 94 percent for the 5-yr average. Corn was 62 percent emerged, compared with 76 percent last year and 83 percent for the 5-yr average. Soybeans were 80 percent planted, compared with 88 percent last year and 82 percent for the 5-yr average. Soybeans were 49 percent emerged, compared with 82 percent last year and 72 percent for the 5-yr average. Winter wheat conditions ranged from fair to good, but most fields were reported in good condition. Winter wheat was 94 percent headed, comparison data not available. Fields were 2 percent harvested for grain, compared to 8 percent last year, 5-yr average comparison data not available. Hay conditions ranged from poor to excellent, but fields were reported in mostly good condition. First-cutting was 61 percent complete, compared with 33 percent last year and 43 percent for the 5-yr average.

LIVESTOCK and PASTURE

Cattle conditions ranged from fair to excellent, but most herds were reported in good condition. Sheep conditions ranged from fair to excellent, but most flocks were reported in good condition. Pasture conditions ranged from poor to excellent, but fields were reported in mostly good condition.

HISTORICAL CROP PROGRESS

YEAR	CORN		SOYBEANS		WHEAT		HAY	PERCENT OF TOTAL ACRES PREPARED FOR SPRING PLANTING
	PLANTED	EMERGED	PLANTED	EMERGED	HEADED	HARV.	1 ST CUT	
2011	88	62	80	49	94	2	61	96
2010	96	76	88	82	N/A	8	33	N/A
5 YR AVG	94	83	82	72	N/A	N/A	43	N/A

**West Virginia
Field
Office**



Temperature and Precipitation Data for the Week Ending 06-12-11

Station	Temperature				Precipitation				
	High	Low	Weekly Average	Weekly Departure	Week's Total	Week's Norm	Since April 1st 2011	Same Week Last Year	Season Normal
--NORTHWEST-----									
WHEELING	91	52	73		0.85		10.64	8.42	
PARKERSBURG	94	56	76	7	1.33	0.92	14.48	12.16	9.21
CRESTON	92	54	74		0.85		15.61	11.52	
--NORTHCENTRAL-----									
MORGANTOWN	91	53	73		0.60		15.00	11.09	
CLARKSBURG	92	52	73	5	1.62	1.00	14.16	10.29	9.88
BELINGTON	88	52	71		1.14		14.86	10.53	
WESTON	92	56	74		1.25		14.06	10.22	
--SOUTHWEST-----									
WILLIAMSON	92	56	76		1.43		14.50	11.55	
HUNTINGTON	92	56	76	6	1.07	0.91	19.77	13.10	9.45
CHARLESTON	93	58	76	7	0.44	0.91	11.29	13.32	9.26
RIPLEY	90	57	76		0.81		15.16	11.29	
--CENTRAL-----									
TERRA ALTA	87	44	69		0.44		13.50	15.61	
ELKINS	88	51	69	5	0.86	1.07	14.21	10.12	10.29
MARLINTON	84	44	66		0.60		13.21	13.03	
BECKLEY	84	53	69	6	0.92	0.77	10.52	13.06	9.02
--SOUTHERN-----									
PINEVILLE	91	60	75		0.35		13.36	14.90	
BLUEFIELD	88	54	71	4	0.44	0.91	11.76	9.70	9.37
WHITE SUL SP	89	52	72		0.35		12.07	7.79	
BLUESTONE DAM	92	61	76		0.38		10.56	7.43	
--NORTHEASTERN-----									
MARTINSBURG	96	56	76	6	0.13	0.84	15.14	7.84	8.91
KEYSER	98	55	75		0.18		16.80	8.79	
MOOREFIELD	96	56	74		0.77		13.50	7.09	
State Average Temperature	73								
State Average Precipitation	0.76								

Sources:

Weather comments and data - Dept. of Commerce, National Oceanic & Atmospheric Administration National Weather Service, Charleston, WV.

Fruit comments - Stephen S. Miller, Ph.D. Research Horticulturist.



USDA-NASS
 West Virginia Field Office
 Phone: (800) 535-7088
 Fax: (304) 558-0297
 Homepage: <http://www.nass.usda.gov/wv>

CROP-WEATHER BULLETIN



In Cooperation with:
 US Department of Commerce-NOAA
 USDA Farm Service Agency
 WV Cooperative Extension Service
 WV Dept. of Agriculture

SOURCE: USDA/NASS West Virginia Field Office
 RELEASED: June 21, 2011

VOL. 11 NO.15
 FOR WEEK OF: June 13 - June 19

GENERAL

Much cooler air and significant cloud cover settled over the Mountain State this week. As a result, the average temperature dropped six degrees from the previous week and the average rainfall amount was nearly double. Temperatures failed to reach into the 90s during the week. Some communities dipped to the lower 40s and held average temperatures from two to 4 degrees below normal. Heavy rain later in the week pushed the rainfall totals well above normal for many locations. Two to three inch totals were common, especially for northern communities.

Temperatures: Williamson, Huntington, and Bluestone Dam all had the highest recorded temperature of 87 degrees. White Sulphur Springs had the lowest recorded temperature of 42 degrees. The state average temperature was 67 degrees.

Precipitation: Clarksburg had the highest recorded amount of precipitation with 3.28 inches. Pineville had the lowest recorded amount of precipitation with 0.25 of an inch. The state average precipitation was 1.44 inches.

Number of days suitable for fieldwork averaged 6 days last week.

TOPSOIL MOISTURE CONDITION

	Very Short	Short	Adequate	Surplus
	PERCENT			
Current Week	--	8	89	3
Last Week	--	7	89	4
Last Year	--	5	88	7

SUPPLIES

Hay and roughage supplies ranged from short to surplus but were reported as mostly adequate. Feed grain supplies ranged from short to adequate but were reported as mostly adequate. Occasional showers grazed the mountain state providing relief from the previous week's heat. Cooler weather allowed farmers to work more comfortably outdoors and gave way to more baling, planting, fence building, and other physically taxing activities.

FRUIT

Hand thinning of peaches should be complete. Pit hardening is occurring and fuzz development is advanced. Treatments for stink bugs should continue.

CROP AND LIVESTOCK CONDITIONS

	Very Poor	Poor	Fair	Good	Exc
	PERCENT				
Cattle & Calves	--	2	10	82	6
Sheep & Lambs	--	3	8	83	6
Apples	--	4	14	73	9
Peaches	--	5	15	65	15
Hay	--	2	25	61	12
Corn	--	--	43	54	3
Soybeans	--	--	30	60	10
Wheat	--	--	27	73	--
Pasture	--	2	40	53	5

FRUIT cont.

Any hand thinning to adjust crop loads on apples should begin very soon. Apple conditions ranged from poor to excellent with most orchards in good condition. Peach conditions ranged from poor to excellent with most orchards in good condition.

GRAINS and HAY

Corn conditions ranged from fair to excellent, but most fields were reported in good condition. Corn was 90 percent planted, comparison data not available. Corn was 74 percent emerged, compared with 97 percent last year and 93 percent for the 5-yr average. Soybean conditions ranged from fair to excellent, but most fields were reported in good condition. Soybeans were 90 percent planted, compared with 93 percent last year and 88 percent for the 5-yr average. Soybeans were 70 percent emerged, compared with 86 percent last year and 81 percent for the 5-yr average. Winter wheat conditions ranged from fair to good, but most fields were reported in good condition. Winter wheat fields were 4 percent harvested for grain, compared to 10 percent last year, 5-yr average comparison data not available. Hay conditions ranged from poor to excellent, but fields were reported in mostly good condition. First-cutting was 66 percent complete, compared with 61 percent last year and 57 percent for the 5-yr average.

LIVESTOCK and PASTURE

Cattle conditions ranged from poor to excellent, but most herds were reported in good condition. Sheep conditions ranged from poor to excellent, but most flocks were reported in good condition. Pasture conditions ranged from poor to excellent, but fields were reported in mostly good condition.

HISTORICAL CROP PROGRESS

YEAR	CORN		SOYBEANS		WHEAT	HAY
	PLANTED	EMERGED	PLANTED	EMERGED	HARV.	1 ST CUT
2011	90	74	90	70	4	66
2010	N/A	97	93	86	10	61
5 YR AVG	N/A	93	88	81	N/A	57

N/A-Not Available

**West Virginia
Field
Office**



Temperature and Precipitation Data for the Week Ending 06-19-11

Station	Temperature				Precipitation				
	High	Low	Weekly Average	Weekly Departure	Week's Total	Week's Norm	Since April 1st 2011	Same Week Last Year	Season Normal
--NORTHWEST--									
WHEELING	80	52	68		2.27		12.91	8.89	
PARKERSBURG	84	54	70	-1	1.82	0.91	16.30	12.29	10.12
CRESTON	82	47	66		0.81		16.42	12.66	
--NORTHCENTRAL--									
MORGANTOWN	80	48	67		2.54		17.54	11.13	
CLARKSBURG	83	50	68	-1	3.28	0.98	17.44	10.35	10.86
BELINGTON	81	48	65		2.10		16.96	11.03	
WESTON	83	50	68		0.85		14.91	10.32	
--SOUTHWEST--									
WILLIAMSON	87	55	71		0.65		15.15	13.05	
HUNTINGTON	87	52	70	-2	0.61	0.90	20.38	14.02	10.35
CHARLESTON	86	48	69	-2	0.83	0.92	12.12	13.87	10.18
RIPLEY	86	50	68		0.54		15.70	11.86	
--CENTRAL--									
TERRA ALTA	74	46	62		2.83		16.33	15.92	
ELKINS	79	46	64	-2	2.06	1.05	16.27	10.48	11.34
MARLINTON	83	44	63		1.84		15.05	13.43	
BECKLEY	76	44	62	-3	0.62	0.77	11.14	13.24	9.79
--SOUTHERN--									
PINEVILLE	80	53	67		0.25		13.61	15.66	
BLUEFIELD	82	46	64	-4	0.49	0.88	12.25	10.06	10.25
WHITE SUL SP	81	42	65		1.19		13.26	8.17	
BLUESTONE DAM	87	54	70		0.41		10.97	7.49	
--NORTHEASTERN--									
MARTINSBURG	85	51	69	-3	0.71	0.78	15.85	8.40	9.69
KEYSER	86	50	68		2.05		18.85	9.23	
MOOREFIELD	86	49	68		2.87		16.37	7.21	
State Average Temperature	67								
State Average Precipitation	1.44								

Sources:

Weather comments and data - Dept. of Commerce, National Oceanic & Atmospheric Administration National Weather Service, Charleston, WV.

Fruit comments - Stephen S. Miller, Ph.D. Research Horticulturist.



USDA-NASS
 West Virginia Field Office
 Phone: (800) 535-7088
 Fax: (304) 558-0297
 Homepage: <http://www.nass.usda.gov/wv>

CROP-WEATHER BULLETIN



In Cooperation with:
 US Department of Commerce-NOAA
 USDA Farm Service Agency
 WV Cooperative Extension Service
 WV Dept. of Agriculture

SOURCE: USDA/NASS West Virginia Field Office
 RELEASED: June 27, 2011

VOL. 11 NO.16
 FOR WEEK OF: June 20 - June 26

GENERAL

More sunshine and a period of warm, southerly breezes pushed the state average temperature up four degrees this week. By the end of the week, however, slow-moving weather systems and a persistent upper level low combined to bring cooler and wet weather back over our region. As a result, all but Huntington had temperatures at or just above normal. The state average precipitation was below an inch. There was quite a difference in the regional amounts. The totals varied from 0.18 of an inch at Bluefield to 2.17 inches at Williamson. Overall, the driest region was the Eastern Panhandle where all locations were below normal for the week.

Temperatures: Williamson had the highest recorded temperature of 94 degrees. Beckley had the lowest recorded temperature of 48 degrees. The state average temperature was 71 degrees.

Precipitation: Williamson had the highest recorded amount of precipitation with 2.17 inches. Bluefield had the lowest recorded amount of precipitation with 0.18 of an inch. The state average precipitation was 0.80 of an inch.

Number of days suitable for fieldwork averaged 4 days last week.

TOPSOIL MOISTURE CONDITION

	Very Short	Short	Adequate	Surplus
	PERCENT			
Current Week	--	3	94	3
Last Week	--	8	89	3
Last Year	8	21	67	4

Although hay farmers fought with scattered showers and thunderstorms, attempting to replenish winter feed supplies, crops improved noticeable and welcomed the moisture. This break and cooler temperatures allowed farmers time to make necessary repairs to machinery needed for the season. Coyote sightings and predation continue throughout the Mountain State.

FRUIT

Old-time Transparent summer apples are beginning to mature and some can be seen falling. Frequent showers have helped apple and peach fruits to continue to size. Foliar scab is still evident and sprays should continue to reduce secondary scab infections. Where peaches are vigorous and heavy, sucker growth has been produced; summer pruning this new growth should be considered.

CROP AND LIVESTOCK CONDITIONS

	Very Poor	Poor	Fair	Good	Exc
	PERCENT				
Cattle & Calves	--	2	13	78	7
Sheep & Lambs	--	2	12	83	3
Apples	--	1	42	49	8
Peaches	--	1	27	64	8
Hay	--	1	15	72	12
Corn	--	--	18	79	3
Soybeans	--	--	11	88	1
Wheat	--	1	19	80	--
Pasture	1	1	25	54	19

FRUIT cont.

The brown marmorated stink bugs haven't been too visual on fruit trees, but they are there nonetheless and sprays should be continued to combat this destructive pest. Apple conditions ranged from poor to excellent with orchards in mostly fair to good condition. Peach conditions ranged from poor to excellent with most orchards in good condition.

GRAINS and HAY

Corn conditions ranged from fair to excellent, but most fields were reported in good condition. Corn was 97 percent planted, comparison data not available. Corn was 88 percent emerged, comparison data not available. Soybean conditions ranged from fair to excellent, but most fields were reported in good condition. Soybeans were 91 percent planted, compared with 94 percent last year, 5-yr average comparison data not available. Soybeans were 83 percent emerged, compared with 88 percent last year and 85 percent for the 5-yr average. Winter wheat conditions ranged from poor to good, but most fields were reported in good condition. Winter wheat fields were 10 percent harvested for grain, compared to 31 percent last year and 12 percent for the 5-yr average. Hay conditions ranged from poor to excellent, but fields were reported in mostly good condition. First-cutting was 72 percent complete, compared with 79 percent last year and 72 percent for the 5-yr average.

LIVESTOCK and PASTURE

Cattle conditions ranged from poor to excellent, but most herds were reported in good condition. Sheep conditions ranged from poor to excellent, but most flocks were reported in good condition. Pasture conditions ranged from very poor to excellent, but fields were reported in mostly good condition.

HISTORICAL CROP PROGRESS

YEAR	CORN		SOYBEANS		WHEAT	HAY
	PLANTED	EMERGED	PLANTED	EMERGED	HARV.	1 ST CUT
2011	97	88	91	83	10	72
2010	N/A	N/A	94	88	31	79
5 YR AVG	N/A	N/A	N/A	85	12	72

N/A-Not Available



Temperature and Precipitation Data for the Week Ending 06-26-11

Station	Temperature				Precipitation				
	High	Low	Weekly Average	Weekly Departure	Week's Total	Week's Norm	Since April 1st 2011	Same Week Last Year	Season Normal
--NORTHWEST--									
WHEELING	86	59	71		0.29		13.20	10.09	
PARKERSBURG	92	61	73	1	1.07	0.91	17.37	14.14	11.03
CRESTON	91	56	70		0.61		17.03	13.72	
--NORTHCENTRAL--									
MORGANTOWN	91	54	71		0.33		17.87	12.39	
CLARKSBURG	90	52	71	0	1.04	0.98	18.48	11.06	11.84
BELINGTON	87	56	70		0.64		17.60	11.89	
WESTON	88	57	71		0.58		15.49	12.06	
--SOUTHWEST--									
WILLIAMSON	94	60	74		2.17		17.32	14.81	
HUNTINGTON	92	57	72	-2	1.73	0.91	22.11	15.75	11.26
CHARLESTON	92	56	72	1	2.06	0.98	14.18	14.42	11.16
RIPLEY	91	58	71		0.73		16.43	12.21	
--CENTRAL--									
TERRA ALTA	81	55	66		0.74		17.07	18.48	
ELKINS	84	53	67	0	0.35	1.05	16.62	11.49	12.39
MARLINTON	82	49	64		0.41		15.46	13.55	
BECKLEY	84	48	65	0	0.70	0.82	11.84	13.91	10.61
--SOUTHERN--									
PINEVILLE	86	58	71		1.10		14.71	16.21	
BLUEFIELD	87	53	69	0	0.18	0.89	12.43	10.32	11.14
WHITE SUL SP	88	49	69		1.00		14.26	8.18	
BLUESTONE DAM	92	58	74		0.22		11.19	7.65	
--NORTHEASTERN--									
MARTINSBURG	89	56	73	0	0.50	0.77	16.35	8.40	10.46
KEYSER	93	56	74		0.47		19.32	9.69	
MOOREFIELD	92	56	73		0.70		17.07	7.21	
State Average Temperature	71								
State Average Precipitation	0.80								

Sources:
Weather comments and data - Dept. of Commerce, National Oceanic & Atmospheric Administration National Weather Service, Charleston, WV.
Fruit comments - Stephen S. Miller, Ph.D. Research Horticulturist.



USDA-NASS
 West Virginia Field Office
 Phone: (800) 535-7088
 Fax: (304) 558-0297
 Homepage: <http://www.nass.usda.gov/wv>

CROP-WEATHER BULLETIN



In Cooperation with:
 US Department of Commerce-NOAA
 USDA Farm Service Agency
 WV Cooperative Extension Service
 WV Dept. of Agriculture

SOURCE: USDA/NASS West Virginia Field Office
 RELEASED: July 5, 2011

VOL. 11 NO.17
 FOR WEEK OF: June 27 - July 3

GENERAL

Heat and humidity brought scattered thunderstorms to the State. But despite what felt like a hot and humid week, the reporting stations weekly average temperatures were actually hovering around normal. In fact, a couple of sites were a degree below normal as a result of overnight lows falling to the upper 40s in some locations. Temperatures reached the 90s for a few days, particularly in the southwest and the Eastern Panhandle. There was quite a range of precipitation amounts during the week; Beckley was rain-free, Huntington had 0.03 of an inch, and both Morgantown and Weston got over 1.50 inches of rain. This is not unusual for this time of year as isolated thunderstorms often drench a few communities while others receive very little precipitation.

Temperatures: Keyser had the highest recorded temperature of 96 degrees. Both Elkins and Marlinton had the lowest recorded temperature of 47 degrees. The state average temperature was 72 degrees.

Precipitation: Morgantown had the highest recorded amount of precipitation with 1.80 inches. Beckley had the lowest with zero recorded precipitation. The state average precipitation was 0.61 of an inch.

Number of days suitable for fieldwork averaged 5 days last week.

TOPSOIL MOISTURE CONDITION

	Very Short	Short	Adequate	Surplus
	PERCENT			
Current				
Week	--	13	85	2
Last				
Week	--	3	94	3
Last				
Year	13	42	44	1

In places weather conditions created a mucky mess for farmers to truck through and drenched hay fields. After the rains departed, it made for thick, humid weather, making the fieldwork much less comfortable.

FRUIT

Adult and nymphal stages of the brown marmorated stink bug can be found in most fruit plantings. Even though the young nymphs cannot fly, they can cause damage to fruits like the adult bugs. Apple growth has slowed somewhat, but size is about normal for this date. Early peaches (mostly clingstone varieties) are ripening and can be found at local markets. If apple scab is present, continue to treat for this disease.

CROP AND LIVESTOCK CONDITIONS

	Very Poor	Poor	Fair	Good	Exc
	PERCENT				
Cattle & Calves	--	2	10	79	9
Sheep & Lambs	--	2	10	85	3
Apples	--	1	34	56	9
Peaches	--	--	37	53	10
Hay	--	3	20	71	6
Corn	--	1	15	81	3
Soybeans	--	--	16	83	1
Wheat	--	2	15	83	--
Pasture	--	2	30	63	5

FRUIT cont.

Apple conditions ranged from poor to excellent with orchards in mostly good condition. Peach conditions ranged from fair to excellent with most orchards in good condition.

GRAINS and HAY

Corn conditions ranged from poor to excellent, but most fields were reported in good condition. Corn was 95 percent emerged, comparison data not available. Corn was 1 percent silked, compared with 10 percent last year, 5-yr average comparison data not available. Soybean conditions ranged from fair to excellent, but most fields were reported in good condition. Soybeans were 93 percent planted, comparison data not available. Soybeans were 90 percent emerged, compared with 92 percent last year and 91 percent for the 5-yr average. Soybeans were 1 percent blooming, compared with 3 percent last year, 5-yr average comparison data not available. Winter wheat conditions ranged from poor to good, but most fields were reported in good condition. Winter wheat fields were 56 percent harvested for grain, compared to 70 percent last year and 37 percent for the 5-yr average. Hay conditions ranged from poor to excellent, but fields were reported in mostly good condition. First-cutting was 83 percent complete, compared with 86 percent last year and 82 percent for the 5-yr average.

LIVESTOCK and PASTURE

Cattle conditions ranged from poor to excellent, but most herds were reported in good condition. Sheep conditions ranged from poor to excellent, but most flocks were reported in good condition. Pasture conditions ranged from poor to excellent, but fields were reported in good condition.

HISTORICAL CROP PROGRESS

YEAR	CORN		SOYBEANS			WHEAT	HAY
	EMERGED	SILKED	PLANTED	EMERGED	BLOOMING	HARV.	1 st CUT
2011	95	1	93	90	1	56	83
2010	N/A	10	N/A	92	3	70	86
5 YR AVG	N/A	N/A	N/A	91	N/A	37	82

N/A-Not Available



Temperature and Precipitation Data for the Week Ending 07-03-11

Station	Temperature				Precipitation				
	High	Low	Weekly Average	Weekly Departure	Week's Total	Week's Norm	Since April 1st 2011	Same Week Last Year	Season Normal
--NORTHWEST--									
WHEELING	87	56	72		0.97		14.17	10.33	
PARKERSBURG	92	58	75	2	1.63	0.91	19.00	14.14	11.94
CRESTON	90	52	71		0.12		17.15	13.80	
--NORTHCENTRAL--									
MORGANTOWN	87	55	72		1.80		19.67	12.39	
CLARKSBURG	89	55	72	0	1.37	0.98	19.85	11.06	12.82
BELINGTON	86	49	70		0.44		18.04	11.97	
WESTON	92	55	73		1.70		17.19	12.06	
--SOUTHWEST--									
WILLIAMSON	93	58	76		0.24		17.56	15.47	
HUNTINGTON	91	56	74	-1	0.03	0.94	22.14	15.77	12.20
CHARLESTON	91	54	74	1	0.18	1.02	14.36	14.45	12.18
RIPLEY	92	56	73		0.29		16.72	12.21	
--CENTRAL--									
TERRA ALTA	85	52	68		0.58		17.65	18.51	
ELKINS	88	47	68	0	1.14	1.11	17.76	11.49	13.50
MARLINTON	81	47	65		0.37		15.83	13.60	
BECKLEY	84	48	66	-1	0.00	0.92	11.84	14.21	11.53
--SOUTHERN--									
PINEVILLE	88	56	73		0.39		15.10	16.32	
BLUEFIELD	89	49	70	0	0.31	0.91	12.74	10.59	12.05
WHITE SUL SP	87	48	70		0.22		14.48	8.27	
BLUESTONE DAM	95	57	74		0.52		11.71	7.67	
--NORTHEASTERN--									
MARTINSBURG	94	54	74	-1	0.37	0.83	16.72	8.40	11.29
KEYSER	96	53	73		0.28		19.60	9.69	
MOOREFIELD	94	54	72		0.36		17.43	7.21	
State Average Temperature	72								
State Average Precipitation	0.61								

Sources:

Weather comments and data - Dept. of Commerce, National Oceanic & Atmospheric Administration National Weather Service, Charleston, WV.

Fruit comments - Stephen S. Miller, Ph.D. Research Horticulturist.



USDA-NASS
 West Virginia Field Office
 Phone: (800) 535-7088
 Fax: (304) 558-0297
 Homepage: <http://www.nass.usda.gov/wv>

CROP-WEATHER BULLETIN



In Cooperation with:
 US Department of Commerce-NOAA
 USDA Farm Service Agency
 WV Cooperative Extension Service
 WV Dept. of Agriculture

SOURCE: USDA/NASS West Virginia Field Office
 RELEASED: July 12, 2011

VOL. 11 NO.18
 FOR WEEK OF: July 4 - 10

GENERAL

The state temperatures continued to be just about normal. Most stations reported slightly above average temperatures for the week. Several stations reached the 90's with the northwestern part of the state being the hottest. Most of the minimum temperatures dropped to the upper 50's and lower 60's. Like the previous week, precipitation amounts varied greatly throughout the state. Most of the precipitation was isolated throughout the region and fell on only one or two days. The rest of the week was dry. Wheeling had very little recorded precipitation, while several sites recorded well over one inch. Two sites recorded over two inches.

Temperatures: Keyser had the highest recorded temperature of 96 degrees. Marlinton had the lowest recorded temperature of 53 degrees. The state average temperature was 74 degrees.

Precipitation: Elkins had the highest recorded amount of precipitation with 2.69 inches. Wheeling had the lowest recorded amount of precipitation with 0.08 of an inch. The state average precipitation was 0.98 of an inch.

Number of days suitable for fieldwork averaged 6 days last week.

TOPSOIL MOISTURE CONDITION

	Very Short	Short	Adequate	Surplus
	PERCENT			
Current Week	--	20	77	3
Last Week	--	13	85	2
Last Year	23	45	32	--

High winds and intense storms in some regions left those producers with water-damaged hay. Rain also contributed to some problems rooting early in the season causing early blight in tomatoes. Basic farm activity of baling hay and straw continued throughout the week.

FRUIT

Garnet Beauty and other early peaches are being harvested at this time. Redhaven will soon follow. Most Yellow Transparent apples have been harvested. Brown Marmorated Stink Bug nymphs have been seen in fruit trees. Sprays should continue for this pest. Bitter rot in apple has also been recorded. This disease can destroy a large percentage of a crop in a short time. Apple

CROP AND LIVESTOCK CONDITIONS

	Very Poor	Poor	Fair	Good	Exc
	PERCENT				
Cattle & Calves	--	2	11	77	10
Sheep & Lambs	--	2	10	85	3
Apples	--	1	34	56	9
Peaches	--	--	37	53	10
Hay	--	3	21	70	6
Corn	--	1	13	83	3
Soybeans	--	--	16	83	1
Pasture	--	2	31	62	5

FRUIT cont.

conditions ranged from poor to excellent with orchards in mostly good condition. Peach conditions ranged from fair to excellent with most orchards in good condition.

GRAINS and HAY

Corn conditions ranged from poor to excellent, but most fields were reported in good condition. Corn was 12 percent silked, compared with 12 percent last year and 11 percent for the 5-yr average. Soybean conditions ranged from fair to excellent, but most fields were reported in good condition. Soybeans were 97 percent planted, comparison data not available. Soybeans were 93 percent emerged, compared with 93 percent last year, 5-yr average comparison data not available. Soybeans were 6 percent blooming, compared with 24 percent last year and 12 percent for the 5-yr average. Winter wheat fields were 73 percent harvested for grain, compared to 71 percent last year and 51 percent for the 5-yr average. Hay conditions ranged from poor to excellent, but fields were reported in mostly good condition. First-cutting was 87 percent complete, compared with 88 percent last year and 87 percent for the 5-yr average. Second-cutting was 7 percent complete, compared with 9 percent last year and 7 percent for the 5-yr average.

LIVESTOCK and PASTURE

Cattle conditions ranged from poor to excellent, but most herds were reported in good condition. Sheep conditions ranged from poor to excellent, but most flocks were reported in good condition. Pasture conditions ranged from poor to excellent, but fields were reported in good condition.

HISTORICAL CROP PROGRESS

YEAR	CORN	SOYBEANS			WHEAT	HAY	
	SILKED	PLANTED	EMERGED	BLOOMING	HARV.	1 st CUT	2 nd CUT
2011	12	97	93	6	73	87	7
2010	12	N/A	93	24	71	88	9
5 YR AVG	11	N/A	N/A	12	51	87	7

N/A-Not Available

**West Virginia
Field
Office**



Temperature and Precipitation Data for the Week Ending 07-10-11

Station	Temperature				Precipitation				
	High	Low	Weekly Average	Weekly Departure	Week's Total	Week's Norm	Since April 1st 2011	Same Week Last Year	Season Normal

--NORTHWEST--									
WHEELING	91	61	76		0.08		14.25	11.11	
PARKERSBURG	93	65	77	3	0.63	0.91	19.63	14.36	12.85
CRESTON	91	58	73		0.73		17.88	13.99	

--NORTHCENTRAL--									
MORGANTOWN	89	62	76		0.98		20.65	13.85	
CLARKSBURG	93	61	75	2	0.93	0.93	20.78	12.65	13.75
BELINGTON	87	59	72		1.64		19.68	12.48	
WESTON	92	61	74		1.23		18.42	13.01	

--SOUTHWEST--									
WILLIAMSON	92	64	78		1.33		18.89	16.82	
HUNTINGTON	91	65	77	1	0.82	0.98	22.96	16.33	13.18
CHARLESTON	93	61	75	2	0.40	1.08	14.76	14.84	13.26
RIPLEY	92	63	76		1.21		17.93	12.23	

--CENTRAL--									
TERRA ALTA	84	56	70		1.33		18.98	18.70	
ELKINS	87	57	70	1	2.69	1.12	20.45	12.38	14.62
MARLINTON	83	53	68		0.57		16.40	13.93	
BECKLEY	84	58	71	3	0.71	1.02	12.55	15.02	12.55

--SOUTHERN--									
PINEVILLE	89	64	76		0.76		15.86	18.11	
BLUEFIELD	88	59	73	2	0.56	0.93	13.30	11.34	12.98
WHITE SUL SP	89	55	73		0.34		14.82	10.27	
BLUESTONE DAM	92	60	76		1.02		12.73	7.86	

--NORTHEASTERN--									
MARTINSBURG	94	61	77	1	2.33	0.84	19.05	8.60	12.13
KEYSER	96	60	76		0.82		20.42	9.83	
MOOREFIELD	94	60	76		0.55		17.98	7.35	

State Average Temperature	74								
State Average Precipitation	0.98								

Sources:

Weather comments and data - Dept. of Commerce, National Oceanic & Atmospheric Administration National Weather Service, Charleston, WV.

Fruit comments - Stephen S. Miller, Ph.D. Research Horticulturist.



USDA-NASS
 West Virginia Field Office
 Phone: (800) 535-7088
 Fax: (304) 558-0297
 Homepage: <http://www.nass.usda.gov/wv>

CROP-WEATHER BULLETIN



In Cooperation with:
 US Department of Commerce-NOAA
 USDA Farm Service Agency
 WV Cooperative Extension Service
 WV Dept. of Agriculture

SOURCE: USDA/NASS West Virginia Field Office
 RELEASED: July 19, 2011

VOL. 11 NO.19
 FOR WEEK OF: July 11 - 17

GENERAL

It was another hot and humid week for West Virginia. The state average temperature remained the same as last week, 74 degrees. All but four sites, which are normally our cooler locations, reached the 90s for at least a couple of days. Once again, Keyser was the hot spot. The combination of heat and humidity provided heat index values over 100 degrees in some locations. Spotty thunderstorms dumped one to two inches of rain on only a few communities. In the hottest locations, generally areas in the Eastern Panhandle, very little precipitation fell. In fact, Martinsburg and Moorefield were rain-free.

Temperatures: Keyser had the highest recorded temperature of 99 degrees. Marlinton had the lowest recorded temperature of 47 degrees. The state average temperature was 74 degrees.

Precipitation: Charleston had the highest recorded amount of precipitation with 2.08 inches. Martinsburg, Moorefield, and Marlinton all had zero recorded precipitation. The state average precipitation was 0.70 of an inch.

Number of days suitable for fieldwork averaged 6 days last week.

TOPSOIL MOISTURE CONDITION

	Very Short	Short	Adequate	Surplus
	PERCENT			
Current Week	2	39	59	--
Last Week	--	20	77	3
Last Year	5	32	56	7

Rain was a much desired and rare commodity last week. Croplands and pasture thirsted for water, but their needs were unmet. Even with the lack of rain this past week, July appears greener than years past. Farmers continued to harvest hay and wheat.

FRUIT

This was a dry reporting period for the region. Redhaven peaches are ready for first harvest. Lack of moisture at final swell could hurt size, but heavy thundershowers could help. All stages of the brown marmorated stink bug can be found in fruit trees. It is recommended that growers continue control measures based on observations and also continue control measures for summer rots and the sooty blotch/fly speck disease on apples.

CROP AND LIVESTOCK CONDITIONS

	Very Poor	Poor	Fair	Good	Exc
	PERCENT				
Cattle & Calves	--	2	10	85	3
Sheep & Lambs	--	2	9	87	2
Apples	--	9	35	54	2
Peaches	--	10	47	41	2
Hay	1	5	21	66	7
Corn	--	4	19	76	1
Soybeans	--	1	23	75	1
Pasture	1	11	46	40	2

FRUIT cont.

Apple conditions ranged from poor to excellent with orchards in mostly good condition. Peach conditions ranged from poor to excellent with most orchards in fair to good condition.

GRAINS and HAY

Corn conditions ranged from poor to excellent, but most fields were reported in good condition. Corn was 22 percent silked, compared with 37 percent last year and 25 percent for the 5-yr average. Soybean conditions ranged from poor to excellent, but most fields were reported in good condition. Soybeans were 96 percent emerged, compared with 99 percent last year, 5-yr average comparison data not available. Soybeans were 19 percent blooming, compared with 26 percent last year and 24 percent for the 5-yr average. Winter wheat fields were 75 percent harvested for grain, compared to 97 percent last year and 70 percent for the 5-yr average. Hay conditions ranged from very poor to excellent, but fields were reported in mostly good condition. First-cutting was 95 percent complete, compared with 93 percent last year and 93 percent for the 5-yr average. Second-cutting was 17 percent complete, compared with 13 percent last year and 12 percent for the 5-yr average.

LIVESTOCK and PASTURE

Cattle conditions ranged from poor to excellent, but most herds were reported in good condition. Sheep conditions ranged from poor to excellent, but most flocks were reported in good condition. Pasture conditions ranged from very poor to excellent, but fields were reported in mostly fair to good condition.

HISTORICAL CROP PROGRESS

YEAR	CORN	SOYBEANS		WHEAT	HAY	
	SILKED	EMERGED	BLOOMING	HARV.	1 st CUT	2 nd CUT
2011	22	96	19	75	95	17
2010	37	99	26	97	93	13
5 YR AVG	25	N/A	24	70	93	12

N/A-Not Available



Temperature and Precipitation Data for the Week Ending 07-17-11

Station	Temperature				Precipitation				
	High	Low	Weekly Average	Weekly Departure	Week's Total	Week's Norm	Since April 1st 2011	Same Week Last Year	Season Normal
--NORTHWEST-----									
WHEELING	91	61	76		0.51		14.76	12.09	
PARKERSBURG	93	62	77	2	1.08	0.94	20.71	18.41	13.79
CRESTON	92	55	74		1.24		19.12	17.66	
--NORTHCENTRAL-----									
MORGANTOWN	90	60	75		0.30		20.95	15.21	
CLARKSBURG	93	58	75	2	0.52	0.95	21.30	14.49	14.70
BELINGTON	92	56	73		0.45		20.13	15.25	
WESTON	93	58	74		1.38		19.80	16.01	
--SOUTHWEST-----									
WILLIAMSON	97	64	76		1.98		20.87	17.83	
HUNTINGTON	95	62	76	0	1.75	1.01	24.71	18.73	14.19
CHARLESTON	94	58	74	0	2.08	1.12	16.84	18.32	14.38
RIPLEY	93	60	76		1.50		19.43	14.85	
--CENTRAL-----									
TERRA ALTA	85	55	70		0.62		19.60	20.50	
ELKINS	89	52	70	0	0.46	1.12	20.91	16.60	15.74
MARLINTON	85	47	66		0.00		16.40	15.95	
BECKLEY	86	58	69	1	0.33	1.05	12.88	18.04	13.60
--SOUTHERN-----									
PINEVILLE	92	62	73		0.57		16.43	20.35	
BLUEFIELD	91	59	71	-2	0.36	0.92	13.66	15.67	13.90
WHITE SUL SP	91	56	72		0.03		14.85	11.57	
BLUESTONE DAM	93	61	77		0.26		12.99	8.54	
--NORTHEASTERN-----									
MARTINSBURG	96	56	75	-2	0.00	0.85	19.05	8.84	12.98
KEYSER	99	55	76		0.08		20.50	10.83	
MOOREFIELD	97	54	75		0.00		17.98	9.60	
State Average Temperature	74								
State Average Precipitation	0.70								

Sources:
Weather comments and data - Dept. of Commerce, National Oceanic & Atmospheric Administration National Weather Service, Charleston, WV.
Fruit comments - Stephen S. Miller, Ph.D. Research Horticulturist.



USDA-NASS
 West Virginia Field Office
 Phone: (800) 535-7088
 Fax: (304) 558-0297
 Homepage: <http://www.nass.usda.gov/wv>

CROP-WEATHER BULLETIN



In Cooperation with:
 US Department of Commerce-NOAA
 USDA Farm Service Agency
 WV Cooperative Extension Service
 WV Dept. of Agriculture

SOURCE: USDA/NASS West Virginia Field Office
 RELEASED: July 25, 2011

VOL. 11 NO.20
 FOR WEEK OF: July 18 - 24

GENERAL

The heat wave continued this week. All stations reported well above average temperatures for the week and were at least 5 degrees above normal, with Parkersburg being 8 degrees above normal. The humidity remained in the area so the heat index reached above 100 again and heat advisories and warnings were issued across the State. All stations reached at least 90 degrees and a few stations reached 100; Keyser reported over 100 degrees. Due to showery precipitation (mostly from thunderstorms) rainfall rates varied from station to station. A few sites saw as much as 2 inches, while others saw less than a quarter of an inch. Huntington, Wheeling, and Elkins were the stations to reach at least two inches.

Temperatures: Keyser had the highest recorded temperature of 103 degrees. Terra Alta had the lowest recorded temperature of 58 degrees. The state average temperature was 80 degrees.

Precipitation: Elkins had the highest recorded amount of precipitation with 2.75 inches. Pineville had the lowest recorded amount of precipitation with 0.15 of an inch. The state average precipitation was 0.91 of an inch.

Number of days suitable for fieldwork averaged 6 days last week.

TOPSOIL MOISTURE CONDITION

	Very Short	Short	Adequate	Surplus
PERCENT				
Current Week	3	30	64	3
Last Week	2	39	59	--
Last Year	15	34	49	2

Extreme heat and scarce rain dried out croplands but allowed for relief in humidity until the end of the week. Some cattle have been shipped already due to short pastureland. Intense rain at the end of the week caused floods in some areas, hindering hay harvesting.

FRUIT

Apples appear to be progressing well in their development, however, some bitter rot can be found in susceptible varieties. Currently, size on peaches is good and about normal, but some appear to be gaining slowly based on expected maturity dates. If low soil moisture conditions continue, peach size could be affected. Some stink bug damage can be seen, especially in the upper

CROP AND LIVESTOCK CONDITIONS

	Very Poor	Poor	Fair	Good	Exc
PERCENT					
Cattle & Calves	--	3	14	74	9
Sheep & Lambs	--	3	13	81	3
Apples	--	7	41	51	1
Peaches	--	7	33	59	1
Hay	2	4	20	65	9
Corn	2	4	19	72	3
Soybeans	--	1	12	86	1
Pasture	1	3	40	46	10

FRUIT cont.

portions of tree canopies, but in general, at this stage, damage appears lower than seen in 2010. Apple conditions ranged from poor to excellent with orchards in mostly good condition. Peach conditions ranged from poor to excellent with most orchards in good condition. Peaches were 32 percent harvested, comparison data not available.

GRAINS and HAY

Corn conditions ranged from very poor to excellent, but most fields were reported in good condition. Corn was 55 percent silked, compared with 66 percent last year and 46 percent for the 5-yr average. Corn was 3 percent doughing, compared with 8 percent last year, 5-yr average comparison data not available. Soybean conditions ranged from poor to excellent, but most fields were reported in good condition. Soybeans were 46 percent blooming, compared with 55 percent last year and 46 percent for the 5-yr average. Soybeans were 17 percent podding, compared with 25 percent last year, 5-yr average comparison data not available. Winter wheat fields were 90 percent harvested for grain, comparison data not available. Hay conditions ranged from very poor to excellent, but fields were reported in mostly good condition. Second-cutting was 32 percent complete, compared with 24 percent last year and 21 percent for the 5-yr average.

LIVESTOCK and PASTURE

Cattle conditions ranged from poor to excellent, but most herds were reported in good condition. Sheep conditions ranged from poor to excellent, but most flocks were reported in good condition. Pasture conditions ranged from very poor to excellent, but fields were reported in mostly fair to good condition.

HISTORICAL CROP PROGRESS

YEAR	PEACHES	CORN		SOYBEANS		WHEAT	HAY
	HARV.	SILKED	DOUGHING	BLOOMING	PODDING	HARV.	2 nd CUT
2011	32	55	3	46	17	90	32
2010	N/A	66	8	55	25	N/A	24
5 YR AVG	N/A	46	N/A	46	N/A	N/A	21

N/A-Not Available



Temperature and Precipitation Data for the Week Ending 07-24-11

Station	Temperature				Precipitation				
	High	Low	Weekly Average	Weekly Departure	Week's Total	Week's Norm	Since April 1st 2011	Same Week Last Year	Season Normal

--NORTHWEST--									
WHEELING	95	70	82		2.24		17.00	12.61	
PARKERSBURG	97	72	83	8	0.27	0.98	20.98	18.98	14.77
CRESTON	95	66	80		0.57		19.69	18.07	

--NORTHCENTRAL--									
MORGANTOWN	94	70	80		1.48		22.43	16.80	
CLARKSBURG	96	70	81	7	1.61	0.98	22.91	15.70	15.68
BELINGTON	92	69	78		0.78		20.91	16.62	
WESTON	96	70	81		0.80		20.60	16.56	

--SOUTHWEST--									
WILLIAMSON	96	65	82		0.39		21.26	20.72	
HUNTINGTON	95	70	82	5	2.06	1.00	26.77	21.41	15.19
CHARLESTON	94	66	81	7	1.20	1.12	18.04	22.37	15.50
RIPLEY	97	70	82		0.40		19.83	16.63	

--CENTRAL--									
TERRA ALTA	90	58	76		1.06		20.66	22.13	
ELKINS	93	65	77	7	2.75	1.07	23.66	17.47	16.81
MARLINTON	92	59	74		0.38		16.78	16.77	
BECKLEY	90	60	75	6	0.73	1.05	13.61	20.26	14.65

--SOUTHERN--									
PINEVILLE	93	69	80		0.15		16.58	21.34	
BLUEFIELD	92	65	77	5	0.38	0.91	14.04	16.20	14.81
WHITE SUL SP	97	63	79		0.23		15.08	12.99	
BLUESTONE DAM	100	67	81		0.90		13.89	9.41	

--NORTHEASTERN--									
MARTINSBURG	101	66	83	6	0.90	0.84	19.95	9.41	13.82
KEYSER	103	68	84		0.28		20.78	10.99	
MOOREFIELD	102	65	83		0.50		18.48	9.74	

State Average Temperature	80								
State Average Precipitation	0.91								

Sources:

Weather comments and data - Dept. of Commerce, National Oceanic & Atmospheric Administration National Weather Service, Charleston, WV.

Fruit comments - Stephen S. Miller, Ph.D. Research Horticulturist.



USDA-NASS
 West Virginia Field Office
 Phone: (800) 535-7088
 Fax: (304) 558-0297
 Homepage: <http://www.nass.usda.gov/wv>

CROP-WEATHER BULLETIN



In Cooperation with:
 US Department of Commerce-NOAA
 USDA Farm Service Agency
 WV Cooperative Extension Service
 WV Dept. of Agriculture

SOURCE: USDA/NASS West Virginia Field Office
 RELEASED: August 2, 2011

VOL. 11 NO.21
 FOR WEEK OF: July 25 - 31

GENERAL

It is hard to believe, but the state average temperature was down three degrees from last week. Only one site, Martinsburg, managed to reach 100 degrees but nearly all others had a few days in the 90s. We are not alone, as most of the nation experienced higher than normal readings. For West Virginia, the temperatures ranged from two to seven degrees above normal and there is no significant change in sight. The state average precipitation was just under three quarters of an inch. That is a bit deceiving. Some locations failed to measure a tenth of an inch while Huntington has 2.81 inches of rain. Most of that fell Saturday evening. Overall, the north central part of the state received the most rain as a series of storms trained west to east over that area early in the week.

Temperatures: Martinsburg had the highest recorded temperature of 100 degrees. Marlinton had the lowest recorded temperature of 51 degrees. The state average temperature was 77 degrees.

Precipitation: Huntington had the highest recorded amount of precipitation with 2.81 inches. Keyser had zero recorded precipitation. The state average precipitation was 0.71 of an inch.

Number of days suitable for fieldwork averaged 6 days last week.

TOPSOIL MOISTURE CONDITION

	Very Short	Short	Adequate	Surplus
	PERCENT			
Current Week	7	48	43	2
Last Week	3	30	64	3
Last Year	12	42	45	1

Dry, hot weather continued throughout the Mountain State causing pasture and corn growth to delay in some regions. Some cattle farmers were busy with late summer vaccinations and participated in calf sales.

FRUIT

Sun intensity combined with heat in recent weeks has resulted in some sunburn on apples. This is a problem for west coast growers but generally not on the east coast. There are several products that can help reduce the extent of sunburn. Major peach harvest for the region is underway. Lack of rainfall may soon take a toll on peach fruit size. For those who have relied heavily on pyrethroid sprays to control the stink bug, now is the

CROP AND LIVESTOCK CONDITIONS

	Very Poor	Poor	Fair	Good	Exc
	PERCENT				
Cattle & Calves	--	5	20	68	7
Sheep & Lambs	--	4	20	73	3
Apples	--	10	36	51	3
Peaches	--	10	47	42	1
Hay	3	9	24	56	8
Corn	8	8	33	47	4
Soybeans	--	2	26	71	1
Pasture	4	8	56	30	2

FRUIT cont.

time to begin looking for Woolly Apple Aphids. These pests can often be found where there is thick foliage, preventing sprays from penetrating to the inner canopy. Apple size is good where fruit were adequately thinned. Apple conditions ranged from poor to excellent with orchards in mostly good condition. Peach conditions ranged from poor to excellent with most orchards in fair to good condition. Peaches were 34 percent harvested, comparison data not available.

GRAINS and HAY

Corn conditions ranged from very poor to excellent, but mostly fields were reported in good condition. Corn was 60 percent silked, compared with 82 percent last year and 69 percent for the 5-yr average. Corn was 7 percent doughing, compared with 29 percent last year and 8 percent for the 5-yr average. Soybean conditions ranged from poor to excellent, but most fields were reported in good condition. Soybeans were 62 percent blooming, compared with 80 percent last year and 61 percent for the 5-yr average. Soybeans were 20 percent podding, compared with 55 percent last year and 25 percent for the 5-yr average. Winter wheat fields were 95 percent harvested for grain, comparison data not available. Hay conditions ranged from very poor to excellent, but most fields were reported in good condition. Second-cutting was 43 percent complete, compared with 36 percent last year and 31 percent for the 5-yr average.

LIVESTOCK and PASTURE

Cattle conditions ranged from poor to excellent, but most herds were reported in good condition. Sheep conditions ranged from poor to excellent, but most flocks were reported in good condition. Pasture conditions ranged from very poor to excellent, but most fields were reported in fair condition.

HISTORICAL CROP PROGRESS

YEAR	PEACHES	CORN		SOYBEANS		WHEAT	HAY
	HARV.	SILKED	DOUGHING	BLOOMING	PODDING	HARV.	2 nd CUT
2011	34	60	7	62	20	95	43
2010	N/A	82	29	80	55	N/A	36
5 YR AVG	N/A	69	8	61	25	N/A	31

N/A-Not Available



Temperature and Precipitation Data for the Week Ending 07-31-11

Station	Temperature				Precipitation				
	High	Low	Weekly Average	Weekly Departure	Week's Total	Week's Norm	Since April 1st 2011	Same Week Last Year	Season Normal
--NORTHWEST--									
WHEELING	92	63	78		0.39		17.39	12.72	
PARKERSBURG	96	68	82	7	0.45	0.98	21.43	19.09	15.75
CRESTON	95	60	78		0.28		19.97	18.23	
--NORTHCENTRAL--									
MORGANTOWN	91	66	78		0.65		23.08	16.80	
CLARKSBURG	92	63	78	4	1.20	0.98	24.11	15.78	16.66
BELINGTON	91	62	76		1.09		22.00	16.89	
WESTON	94	64	78		1.83		22.43	17.19	
--SOUTHWEST--									
WILLIAMSON	95	67	81		0.29		21.55	22.63	
HUNTINGTON	94	64	81	4	2.81	0.98	29.58	22.13	16.17
CHARLESTON	94	60	79	4	0.61	1.07	18.65	22.43	16.57
RIPLEY	96	63	80		0.10		19.93	16.81	
--CENTRAL--									
TERRA ALTA	93	60	74		0.71		21.37	22.34	
ELKINS	89	57	74	4	0.14	1.05	23.80	18.03	17.86
MARLINTON	88	51	71		0.04		16.82	17.94	
BECKLEY	86	56	72	4	1.84	1.00	15.45	21.07	15.65
--SOUTHERN--									
PINEVILLE	92	65	78		1.40		17.98	21.75	
BLUEFIELD	92	59	74	2	0.96	0.86	15.00	16.83	15.67
WHITE SUL SP	91	57	75		0.31		15.39	13.58	
BLUESTONE DAM	93	64	74		0.21		14.10	9.59	
--NORTHEASTERN--									
MARTINSBURG	100	62	79	2	0.30	0.84	20.25	9.41	14.66
KEYSER	99	62	81		0.00		20.78	11.07	
MOOREFIELD	97	61	79		0.03		18.51	10.32	
State Average Temperature	77								
State Average Precipitation	0.71								

Sources:

Weather comments and data - Dept. of Commerce, National Oceanic & Atmospheric Administration National Weather Service, Charleston, WV.

Fruit comments - Stephen S. Miller, Ph.D. Research Horticulturist.



USDA-NASS
 West Virginia Field Office
 Phone: (800) 535-7088
 Fax: (304) 558-0297
 Homepage: <http://www.nass.usda.gov/wv>

CROP-WEATHER BULLETIN



In Cooperation with:
 US Department of Commerce-NOAA
 USDA Farm Service Agency
 WV Cooperative Extension Service
 WV Dept. of Agriculture

SOURCE: USDA/NASS West Virginia Field Office
 RELEASED: August 8, 2011

VOL. 11 NO.22
 FOR WEEK OF: August 1 - 7

GENERAL

It was a steamy week for the Mountain State. The state average temperature remained the same as last week, 77 degrees. Most sites reached the low to mid 90s during the week and the northeast sections were again the warmest. The northwest and north central sections were five degrees above normal for the period. The rainfall average was nearly double that of last week. The north central section was the wettest by far. Morgantown had almost five inches and Clarksburg measured 4.27 inches of rain as a band of heavy storms moved over that region late Saturday into early Sunday. Elsewhere, isolated showers provided various amounts of rain.

Temperatures: Keyser had the highest recorded temperature of 97 degrees. Marlinton had the lowest recorded temperature of 51 degrees. The state average temperature was 77 degrees.

Precipitation: Morgantown had the highest recorded amount of precipitation with 4.94 inches. Bluestone Dam had the lowest recorded amount of precipitation with 0.04 of an inch. The state average precipitation was 1.34 inches.

Number of days suitable for fieldwork averaged 5 days last week.

TOPSOIL MOISTURE CONDITION

	Very Short	Short	Adequate	Surplus
	PERCENT			
Current Week	7	32	55	6
Last Week	7	48	43	2
Last Year	16	38	42	4

Rainfall was as much as a blessing as a curse in some areas of the Mountain State. Heavy showers soaked the ground, supplying much needed water to crops. Some areas suffered low-land floods due to the intensity of the rainfall. Fair season is underway, and many have enjoyed the novelty of the gatherings state-wide.

FRUIT

Size is down on some peaches due to low moisture at final swell. Where apples were well thinned, size appears normal. In general, frequent thundershowers in the latter part of the reporting period brought little moisture to most spots. Understory weeds have benefitted most from the light showers and high temperatures.

CROP AND LIVESTOCK CONDITIONS

	Very Poor	Poor	Fair	Good	Exc
	PERCENT				
Cattle & Calves	--	1	23	74	2
Sheep & Lambs	--	1	11	87	1
Apples	--	10	36	52	2
Peaches	--	10	47	41	2
Hay	2	12	23	57	6
Corn	6	7	34	53	--
Soybeans	--	2	24	73	1
Pasture	1	13	52	31	3

FRUIT cont.

Apple conditions ranged from poor to excellent with orchards in mostly good condition. Peach conditions ranged from poor to excellent with most orchards in fair to good condition. Peaches were 40 percent harvested, compared with 31 percent last year and 28 percent for the 5-yr average.

GRAINS and HAY

Corn conditions ranged from very poor to good, but mostly fields were reported in good condition. Corn was 78 percent silked, compared with 86 percent last year and 76 percent for the 5-yr average. Corn was 23 percent doughing, compared with 49 percent last year and 19 percent for the 5-yr average. Soybean conditions ranged from poor to excellent, but most fields were reported in good condition. Soybeans were 83 percent blooming, compared with 88 percent last year and 76 percent for the 5-yr average. Soybeans were 42 percent podding, compared with 71 percent last year and 40 percent for the 5-yr average. Hay conditions ranged from very poor to excellent, but most fields were reported in good condition. Second-cutting was 53 percent complete, compared with 37 percent last year and 39 percent for the 5-yr average.

LIVESTOCK and PASTURE

Cattle conditions ranged from poor to excellent, but most herds were reported in good condition. Sheep conditions ranged from poor to excellent, but most flocks were reported in good condition. Pasture conditions ranged from very poor to excellent, but most fields were reported in fair condition.

HISTORICAL CROP PROGRESS

YEAR	PEACHES	CORN		SOYBEANS		HAY
	HARV.	SILKED	DOUGHING	BLOOMING	PODDING	2 nd CUT
2011	40	78	23	83	42	53
2010	31	86	49	88	71	37
5 YR AVG	28	76	19	76	40	39

**West Virginia
Field
Office**



Temperature and Precipitation Data for the Week Ending 08-07-11

Station	Temperature				Precipitation				
	High	Low	Weekly Average	Weekly Departure	Week's Total	Week's Norm	Since April 1st 2011	Same Week Last Year	Season Normal

--NORTHWEST--									
WHEELING	91	66	79		0.28		17.67	13.22	
PARKERSBURG	95	68	80	5	1.13	1.01	22.56	20.28	16.76
CRESTON	94	60	77		2.04		22.01	19.51	

--NORTHCENTRAL--									
MORGANTOWN	92	66	77		4.94		28.02	18.42	
CLARKSBURG	92	66	78	5	4.27	1.00	28.38	17.01	17.66
BELINGTON	89	63	76		1.80		23.80	18.81	
WESTON	93	64	78		1.52		23.95	18.49	

--SOUTHWEST--									
WILLIAMSON	94	67	79		1.00		22.55	23.18	
HUNTINGTON	93	66	79	3	1.48	0.94	31.06	23.10	17.11
CHARLESTON	93	62	78	4	1.07	1.00	19.72	23.55	17.57
RIPLEY	94	66	79		1.54		21.47	18.82	

--CENTRAL--									
TERRA ALTA	86	65	74		1.84		23.21	24.02	
ELKINS	89	58	74	4	1.05	1.01	24.85	20.57	18.87
MARLINTON	86	51	72		0.14		16.96	18.14	
BECKLEY	85	56	72	4	0.35	0.88	15.80	21.85	16.53

--SOUTHERN--									
PINEVILLE	92	64	77		0.67		18.65	23.86	
BLUEFIELD	89	59	75	3	0.23	0.78	15.23	17.83	16.45
WHITE SUL SP	94	66	77		0.49		15.88	14.11	
BLUESTONE DAM	91	65	79		0.04		14.14	10.05	

--NORTHEASTERN--									
MARTINSBURG	96	64	78	1	1.15	0.77	21.40	9.58	15.43
KEYSER	97	63	80		1.08		21.86	11.39	
MOOREFIELD	95	60	78		1.41		19.92	10.57	

State Average Temperature	77								
State Average Precipitation	1.34								

Sources:

Weather comments and data - Dept. of Commerce, National Oceanic & Atmospheric Administration National Weather Service, Charleston, WV.

Fruit comments - Stephen S. Miller, Ph.D. Research Horticulturist.



USDA-NASS
 West Virginia Field Office
 Phone: (800) 535-7088
 Fax: (304) 558-0297
 Homepage: <http://www.nass.usda.gov/wv>

CROP-WEATHER BULLETIN



In Cooperation with:
 US Department of Commerce-NOAA
 USDA Farm Service Agency
 WV Cooperative Extension Service
 WV Dept. of Agriculture

SOURCE: USDA/NASS West Virginia Field Office
 RELEASED: August 16, 2011
 Updated August 23, 2011

VOL. 11 NO.23
 FOR WEEK OF: August 8 - 14

GENERAL

The State average temperature fell five degrees from the previous reporting period and the highs were in the lower 90's for several locations. Rainfall varied across the Mountain State and the average precipitation for the week also fell from the previous week.

Temperatures: White Sulphur Springs and Keyser both had the highest recorded temperature of 92 degrees. Marlinton had the lowest recorded temperature of 47 degrees. The state average temperature was 72 degrees.

Precipitation: Martinsburg had the highest recorded amount of precipitation with 2.17 inches. Huntington had the lowest with 0.24 of an inch of recorded precipitation. The state average precipitation was 0.88 of an inch.

Number of days suitable for fieldwork averaged 5 days last week.

TOPSOIL MOISTURE CONDITION

	Very Short	Short	Adequate	Surplus
	PERCENT			
Current Week	3	22	68	7
Last Week	7	32	55	6
Last Year	8	38	51	3

Farm activities included working in vegetable gardens, baling and transporting hay, vaccinating livestock, and participating in fairs and festivals.

FRUIT

Peach harvest is still in full swing and heavy thunderstorms brought sufficient moisture to some local areas to increase final fruit size. Stink bug damage can be found, especially in the tops of some trees, but in general the damage level seems to be below that in 2010. The use of specific pesticides by growers in 2011 targeted to stink bugs seems to have provided some help against this destructive pest. Apples are sizing nicely where adequate thinning was achieved. Gala are showing some red color and first harvest should be about 10 to 14 days from now. For the few Honeycrisp apples grown in this area some red color is just beginning to appear. For best keeping and eating quality this variety should have a cream white under color not green, when harvested. That cream color will often ap-

CROP AND LIVESTOCK CONDITIONS

	Very Poor	Poor	Fair	Good	Exc
	PERCENT				
Cattle & Calves	--	1	25	72	2
Sheep & Lambs	--	--	23	76	1
Apples	--	8	40	50	2
Peaches	--	7	34	58	1
Hay	2	10	22	63	3
Corn	6	7	33	54	--
Soybeans	--	1	25	73	1
Pasture	2	9	50	36	3

FRUIT cont.

pear around the stem end first. Apple conditions ranged from poor to excellent with orchards in mostly good condition. Peach conditions ranged from poor to excellent with most orchards in good condition. Peaches were 68 percent harvested, compared with 40 percent last year and 40 percent for the 5-yr average.

GRAINS and HAY

Corn conditions ranged from very poor to good, but mostly fields were reported in good condition. Corn was 79 percent silked, compared with 99 percent last year and 90 percent for the 5-yr average. Corn was 44 percent doughing, compared with 82 percent last year and 43 percent for the 5-yr average. Soybean conditions ranged from poor to excellent, but most fields were reported in good condition. Soybeans were 93 percent blooming, compared with 99 percent last year and 91 percent for the 5-yr average. Soybeans were 62 percent podding, compared with 84 percent last year and 60 percent for the 5-yr average. Hay conditions ranged from very poor to excellent, but most fields were reported in good condition. Second-cutting was 63 percent complete, compared with 51 percent last year and 49 percent for the 5-yr average.

LIVESTOCK and PASTURE

Cattle conditions ranged from poor to excellent, but most herds were reported in good condition. Sheep conditions ranged from fair to excellent, but most flocks were reported in good condition. Pasture conditions ranged from very poor to excellent, but most fields were reported in fair condition.

HISTORICAL CROP PROGRESS

YEAR	PEACHES	CORN		SOYBEANS		HAY
	HARV.	SILKED	DOUGHING	BLOOMING	PODDING	2 nd CUT
2011	68	79	44	93	62	63
2010	40	99	82	99	84	51
5 YR AVG	40	90	43	91	60	49

**West Virginia
Field
Office**



Temperature and Precipitation Data for the Week Ending 08-14-11

Station	Temperature				Precipitation				
	High	Low	Weekly Average	Weekly Departure	Week's Total	Week's Norm	Since April 1st 2011	Same Week Last Year	Season Normal
--NORTHWEST--									
WHEELING	86	55	72		1.73		19.40	13.32	
PARKERSBURG	91	54	74	0	0.66	1.05	23.22	22.01	17.81
CRESTON	90	50	71		0.57		22.58	21.03	
--NORTHCENTRAL--									
MORGANTOWN	84	55	72		0.82		28.84	19.96	
CLARKSBURG	86	54	72	-1	0.65	1.05	29.03	17.67	18.71
BELINGTON	83	52	70		0.57		24.37	19.44	
WESTON	87	55	73		1.25		25.20	22.75	
--SOUTHWEST--									
WILLIAMSON	91	60	76		1.14		23.69	24.98	
HUNTINGTON	91	57	74	-2	0.24	0.90	31.30	26.07	18.01
CHARLESTON	90	53	73	0	0.43	0.94	20.15	24.72	18.51
RIPLEY	90	55	74		1.17		22.64	20.71	
--CENTRAL--									
TERRA ALTA	81	52	68		2.05		25.26	24.85	
ELKINS	85	50	69	-1	0.82	0.98	25.67	21.91	19.85
MARLINTON	84	47	67		0.52		17.48	18.53	
BECKLEY	83	51	68	0	0.64	0.80	16.44	22.55	17.33
--SOUTHERN--									
PINEVILLE	86	59	73		1.65		20.30	24.59	
BLUEFIELD	88	54	71	-1	0.30	0.72	15.53	17.84	17.17
WHITE SUL SP	92	56	74		0.27		16.15	15.26	
BLUESTONE DAM	90	59	75		0.75		14.89	10.18	
--NORTHEASTERN--									
MARTINSBURG	91	55	74	-1	2.17	0.77	23.57	10.24	16.20
KEYSER	92	51	74		0.25		22.11	11.59	
MOOREFIELD	91	53	73		0.73		20.65	10.93	
State Average Temperature	72								
State Average Precipitation	0.88								

Sources:

Weather comments and data - Dept. of Commerce, National Oceanic & Atmospheric Administration National Weather Service, Charleston, WV.

Fruit comments - Stephen S. Miller, Ph.D. Research Horticulturist.



USDA-NASS
 West Virginia Field Office
 Phone: (800) 535-7088
 Fax: (304) 558-0297
 Homepage: <http://www.nass.usda.gov/wv>

CROP-WEATHER BULLETIN



In Cooperation with:
 US Department of Commerce-NOAA
 USDA Farm Service Agency
 WV Cooperative Extension Service
 WV Dept. of Agriculture

SOURCE: USDA/NASS West Virginia Field Office
 RELEASED: August 22, 2011
 Updated August 23, 2011

VOL. 11 NO.24
 FOR WEEK OF: August 15 - 21

GENERAL

For the past couple of weeks, the temperatures have been right at average across West Virginia. Rainfall has varied widely across the State for the last few weeks, thanks to showery and scattered precipitation. Huntington had the lowest recorded precipitation the previous reporting period, and this time, it has the highest.

Temperatures: Keyser had the highest recorded temperature of 94 degrees. Marlinton had the lowest recorded temperature of 50 degrees. The state average temperature was 72 degrees.

Precipitation: Huntington had the highest recorded amount of precipitation with 2.63 inches. Williamson had the lowest with 0.19 of an inch of recorded precipitation. The state average precipitation was 0.93 of an inch.

Number of days suitable for fieldwork averaged 6 days last week.

TOPSOIL MOISTURE CONDITION

	Very Short	Short	Adequate	Surplus
	PERCENT			
Current Week	6	28	65	1
Last Week	3	22	68	7
Last Year	18	36	43	3

Farm activities included working in vegetable gardens, baling and transporting hay, vaccinating livestock, chopping corn for silage, harvesting peaches and apples, and participating in the West Virginia State Fair and festivals.

FRUIT

Heavy thundershowers early in the reporting period aided fruit size in late summer peaches. Some early varieties of Asian pears are maturing. Gala apples are also showing maturity and color has started to fill in on this variety as well as Honeycrisp. Any presence of bitter rot disease in apples can be easily spotted by the darker red fruit on the tree. This rot can spread rapidly and control steps should be taken if you see bitter rot infected fruit. The additional moisture has also helped weed growth, especially crabgrass. Fruit size on well thinned apples is good.

CROP AND LIVESTOCK CONDITIONS

	Very Poor	Poor	Fair	Good	Exc
	PERCENT				
Cattle & Calves	--	3	23	69	5
Sheep & Lambs	--	1	17	79	3
Apples	--	10	36	52	2
Hay	2	11	25	57	5
Corn	7	6	31	54	2
Soybeans	--	1	25	73	1
Pasture	5	16	42	33	4

FRUIT cont.

Apple conditions ranged from poor to excellent with orchards in mostly good condition. Peaches were 80 percent harvested, compared with 75 percent last year and 59 percent for the 5-yr average.

GRAINS and HAY

Corn conditions ranged from very poor to excellent, but mostly fields were reported in good condition. Corn was 91 percent silked, comparison data not available. Corn was 56 percent doughing, compared with 85 percent last year and 56 percent for the 5-yr average. Corn was 5 percent dented, compared with 31 percent last year and 18 percent for the 5-yr average. Soybean conditions ranged from poor to excellent, but most fields were reported in good condition. Soybeans were 99 percent blooming, comparison data not available. Soybeans were 86 percent podding, compared with 97 percent last year and 76 percent for the 5-yr average. Soybeans were 1 percent dropping leaves, compared with 2 percent last year, 5-yr average comparison data not available. Hay conditions ranged from very poor to excellent, but most fields were reported in good condition. Second-cutting was 64 percent complete, compared with 61 percent last year and 61 percent for the 5-yr average.

LIVESTOCK and PASTURE

Cattle conditions ranged from poor to excellent, but most herds were reported in good condition. Sheep conditions ranged from poor to excellent, but most flocks were reported in good condition. Pasture conditions ranged from very poor to excellent, but fields were mostly reported in fair to good condition.

HISTORICAL CROP PROGRESS

YEAR	PEACHES	CORN			SOYBEANS			HAY
	HARV.	SILKED	DOUGHING	DENTED	BLOOMING	PODDING	DROP LVS.	2 nd CUT
2011	80	91	56	5	99	86	1	64
2010	75	N/A	85	31	N/A	97	2	61
5 YR AVG	59	N/A	56	18	N/A	76	N/A	61

N/A-Not Available

**West Virginia
Field
Office**



Temperature and Precipitation Data for the Week Ending 08-21-11

Station	Temperature				Precipitation				
	High	Low	Weekly Average	Weekly Departure	Week's Total	Week's Norm	Since April 1st 2011	Same Week Last Year	Season Normal
--NORTHWEST--									
WHEELING	86	54	72		0.25		19.65	13.82	
PARKERSBURG	90	57	74	1	0.66	0.98	23.88	22.47	18.79
CRESTON	89	55	71		0.84		23.42	21.81	
--NORTHCENTRAL--									
MORGANTOWN	85	57	72		0.49		29.33	20.09	
CLARKSBURG	86	56	72	1	0.90	0.98	29.93	17.83	19.69
BELINGTON	84	56	70		0.89		25.26	19.77	
WESTON	89	60	73		0.70		25.90	23.30	
--SOUTHWEST--									
WILLIAMSON	91	61	76		0.19		23.88	27.46	
HUNTINGTON	90	57	74	-1	2.63	0.84	33.93	27.66	18.85
CHARLESTON	91	55	73	1	1.14	0.91	21.29	25.89	19.42
RIPLEY	90	58	73		1.10		23.74	21.51	
--CENTRAL--									
TERRA ALTA	81	54	67		0.71		25.97	25.73	
ELKINS	85	54	69	1	1.10	0.95	26.77	22.30	20.80
MARLINTON	89	50	67		0.95		18.43	19.09	
BECKLEY	87	51	68	1	0.35	0.77	16.79	23.87	18.10
--SOUTHERN--									
PINEVILLE	86	59	72		2.44		22.74	25.75	
BLUEFIELD	86	52	70	-1	1.56	0.70	17.09	20.70	17.87
WHITE SUL SP	90	56	70		0.68		16.83	15.94	
BLUESTONE DAM	91	59	75		0.23		15.12	11.32	
--NORTHEASTERN--									
MARTINSBURG	90	57	73	-2	0.45	0.76	24.02	10.50	16.96
KEYSER	94	55	75		1.18		23.29	11.87	
MOOREFIELD	90	56	73		0.93		21.58	11.84	
State Average Temperature	72								
State Average Precipitation	0.93								

Sources:

Weather comments and data - Dept. of Commerce, National Oceanic & Atmospheric Administration National Weather Service, Charleston, WV.

Fruit comments - Stephen S. Miller, Ph.D. Research Horticulturist.



USDA-NASS
 West Virginia Field Office
 Phone: (800) 535-7088
 Fax: (304) 558-0297
 Homepage: <http://www.nass.usda.gov/wv>

CROP-WEATHER BULLETIN



In Cooperation with:
 US Department of Commerce-NOAA
 USDA Farm Service Agency
 WV Cooperative Extension Service
 WV Dept. of Agriculture

SOURCE: USDA/NASS West Virginia Field Office
 RELEASED: August 29, 2011
 Updated August 31, 2011

VOL. 11 NO.25
 FOR WEEK OF: August 22 - 28

GENERAL

Temperatures remained right at normal across the state, with average highs in the 80s. A few of the warmer sites reached the 90s. The lows this week dropped to the 40s and 50s. With more showery precipitation falling during the week, rainfall rates varied once again. The scattered precipitation also fell in a few days, so part of the week was dry. Several sites reached over one inch. Hurricane Irene, which moved up the East Coast from North Carolina through New England, had little effect in West Virginia. Most of the state received some cloud cover from the storm, and the Eastern Panhandle received just small amounts of rain. Earlier in the week, an earthquake, which was centered in Virginia, could be felt in parts of West Virginia Tuesday afternoon.

Temperatures: Williamson and Keyser both had the highest recorded temperature of 91 degrees. Marlinton had the lowest recorded temperature of 44 degrees. The state average temperature was 70 degrees.

Precipitation: Terra Alta had the highest recorded amount of precipitation with 1.91 inches. Williamson and White Sulphur Springs both had the lowest with zero recorded precipitation. The state average precipitation was 0.70 of an inch.

Number of days suitable for fieldwork averaged 5 days last week.

TOPSOIL MOISTURE CONDITION

	Very Short	Short	Adequate	Surplus
	PERCENT			
Current				
Week	5	29	66	--
Last				
Week	6	28	65	1
Last				
Year	25	38	37	--

Farm activities included working in vegetable gardens, baling and transporting hay, vaccinating livestock, weaning calves, chopping corn for silage, harvesting peaches and apples, and hauling water for livestock.

FRUIT

Apple conditions ranged from poor to excellent with orchards in mostly fair to good condition. Apples

CROP AND LIVESTOCK CONDITIONS

	Very Poor	Poor	Fair	Good	Exc
	PERCENT				
Cattle & Calves	--	3	22	71	4
Sheep & Lambs	--	1	20	75	4
Apples	--	8	42	49	1
Hay	3	8	30	56	3
Corn	6	7	29	55	3
Soybeans	--	1	25	73	1
Pasture	8	12	43	34	3

FRUIT cont.

were 9 percent harvested, compared with 10 percent last year and 10 percent for the 5-yr average. Peaches were 92 percent harvested, compared with 80 percent last year and 77 percent for the 5-yr average.

GRAINS and HAY

Corn conditions ranged from very poor to excellent, but mostly fields were reported in good condition. Corn was 94 percent silked, comparison data not available. Corn was 64 percent doughing, compared with 88 percent last year and 73 percent for the 5-yr average. Corn was 18 percent dented, compared with 58 percent last year and 32 percent for the 5-yr average. Soybean conditions ranged from poor to excellent, but most fields were reported in good condition. Soybeans were 95 percent podding, comparison data not available. Soybeans were 6 percent dropping leaves, compared with 17 percent last year and 7 percent for the 5-yr average. Hay conditions ranged from very poor to excellent, but most fields were reported in good condition. Second-cutting was 68 percent complete, compared with 64 percent last year and 68 percent for the 5-yr average.

LIVESTOCK and PASTURE

Cattle conditions ranged from poor to excellent, but most herds were reported in good condition. Sheep conditions ranged from poor to excellent, but most flocks were reported in good condition. Pasture conditions ranged from very poor to excellent, but fields were mostly reported in fair to good condition.

HISTORICAL CROP PROGRESS

YEAR	APPLES	PEACHES	CORN			SOYBEANS		HAY
	HARV.	HARV.	SILKED	DOUGHING	DENTED	PODDING	DROP LVS.	2 nd CUT
2011	9	92	94	64	18	95	6	68
2010	10	80	N/A	88	58	N/A	17	64
5 YR AVG	10	77	N/A	73	32	N/A	7	68

N/A-Not Available

**West Virginia
Field
Office**



Temperature and Precipitation Data for the Week Ending 08-28-11

Station	Temperature				Precipitation				
	High	Low	Weekly Average	Weekly Departure	Week's Total	Week's Norm	Since April 1st 2011	Same Week Last Year	Season Normal

--NORTHWEST-----									
WHEELING	84	53	70		0.65		20.30	13.99	
PARKERSBURG	87	58	73	1	1.01	0.95	24.89	22.47	19.74
CRESTON	85	52	69		0.38		23.80	21.81	

--NORTHCENTRAL-----									
MORGANTOWN	85	53	70		1.20		30.53	20.67	
CLARKSBURG	84	53	70	-1	1.27	0.97	31.20	18.06	20.66
BELINGTON	85	51	68		0.76		26.02	20.20	
WESTON	86	53	71		0.60		26.50	23.95	

--SOUTHWEST-----									
WILLIAMSON	91	57	75		0.00		23.88	27.46	
HUNTINGTON	89	54	73	-1	0.07	0.78	34.00	27.70	19.63
CHARLESTON	88	51	71	-1	0.79	0.90	22.08	25.89	20.32
RIPLEY	88	55	72		0.65		24.39	21.57	

--CENTRAL-----									
TERRA ALTA	80	49	66		1.91		27.88	26.23	
ELKINS	84	46	67	0	1.05	0.91	27.82	22.89	21.71
MARLINTON	80	44	64		0.17		18.60	20.61	
BECKLEY	83	46	65	-1	0.41	0.74	17.20	23.99	18.84

--SOUTHERN-----									
PINEVILLE	86	55	70		0.06		22.80	26.07	
BLUEFIELD	88	47	69	0	0.32	0.70	17.41	21.63	18.57
WHITE SUL SP	87	46	69		0.00		16.83	16.54	
BLUESTONE DAM	89	55	72		0.04		15.16	12.30	

--NORTHEASTERN-----									
MARTINSBURG	88	51	72	-2	1.51	0.77	25.53	10.58	17.73
KEYSER	91	50	72		1.17		24.46	12.59	
MOOREFIELD	89	49	71		1.31		22.89	12.28	

State Average Temperature	70								
State Average Precipitation	0.70								

Source:
Weather comments and data - Dept. of Commerce, National Oceanic & Atmospheric Administration National Weather Service, Charleston, WV.



USDA-NASS
 West Virginia Field Office
 Phone: (800) 535-7088
 Fax: (304) 558-0297
 Homepage: <http://www.nass.usda.gov/wv>

CROP-WEATHER BULLETIN



In Cooperation with:
 US Department of Commerce-NOAA
 USDA Farm Service Agency
 WV Cooperative Extension Service
 WV Dept. of Agriculture

SOURCE: USDA/NASS West Virginia Field Office
 RELEASED: September 6, 2011

VOL. 11 NO.26
 FOR WEEK OF: August 29 - September 4

GENERAL

There was a significant jump in temperatures this week as the state average temperature was up four degrees from last week. Readings fell during the last couple of days of the week as clouds and rain associated with an approaching tropical system finally arrived along with a weak cold front. Just before those systems changed the overall weather pattern, temperatures hit the upper 90s for several sites and even hit the 100 degree mark in neighboring Ohio counties. Rainfall was also up this week with the average near one and a quarter inches. Again, most of the rain fell late in the week. Heavy thunderstorms dumped over two inches of rain in some locations. The rain in the State was a welcome sight after the recent dry weather and limited rainfall amounts.

Temperatures: Several locations had the highest recorded temperature of 98 degrees. Creston had the lowest recorded temperature of 48 degrees. The state average temperature was 74 degrees.

Precipitation: Charleston had the highest recorded amount of precipitation with 2.55 inches. Weston had the lowest with 0.30 of an inch of recorded precipitation. The state average precipitation was 1.24 inches.

Number of days suitable for fieldwork averaged 5 days last week.

TOPSOIL MOISTURE CONDITION

	Very Short	Short	Adequate	Surplus
	PERCENT			
Current Week	2	15	72	11
Last Week	5	29	66	--
Last Year	36	46	17	1

Many parts of the state received much needed rainfall from the remnants of Tropical Storm Lee. Farm activities included baling and transporting hay, vaccinating livestock, weaning calves, chopping corn for silage, harvesting peaches and apples, and hauling water for livestock.

FRUIT

Only a few of the late variety peaches remain to be harvested as well as a few Honeycrisp and Gala apples. Stem bowl cracking has been a problem in Gala from rains and advanced maturity. With the continued forecast of rain, any Honeycrisp remaining on the trees could also begin cracking. For commercial growers, it is

CROP AND LIVESTOCK CONDITIONS

	Very Poor	Poor	Fair	Good	Exc
	PERCENT				
Cattle & Calves	--	4	20	73	3
Sheep & Lambs	--	4	23	70	3
Apples	--	10	36	52	2
Hay	2	10	28	57	3
Corn	8	7	26	57	2
Soybeans	--	2	24	73	1
Pasture	3	20	41	34	2

FRUIT cont.

recommended that stop-drop sprays be applied soon for apples maturing in either late September or early October. Apple conditions ranged from poor to excellent with orchards in mostly good condition. Apples were 18 percent harvested, compared with 18 percent last year and 14 percent for the 5-yr average. Peaches were 95 percent harvested, compared with 85 percent last year and 84 percent for the 5-yr average.

GRAINS and HAY

Corn conditions ranged from very poor to excellent, but mostly fields were reported in good condition. Corn was 98 percent silked, comparison data not available. Corn was 77 percent doughing, compared with 92 percent last year and 81 percent for the 5-yr average. Corn was 36 percent dented, compared with 68 percent last year and 47 percent for the 5-yr average. Soybean conditions ranged from poor to excellent, but most fields were reported in good condition. Soybeans were 12 percent dropping leaves, compared with 47 percent last year and 22 percent for the 5-yr average. Hay conditions ranged from very poor to excellent, but most fields were reported in good condition. Second-cutting was 84 percent complete, compared with 73 percent last year and 77 percent for the 5-yr average. Third-cutting was 20 percent complete, compared with 15 percent last year and 13 percent for the 5-yr average.

LIVESTOCK and PASTURE

Cattle conditions ranged from poor to excellent, but most herds were reported in good condition. Sheep conditions ranged from poor to excellent, but most flocks were reported in good condition. Pasture conditions ranged from very poor to excellent, but fields were mostly reported in fair to good condition.

HISTORICAL CROP PROGRESS

YEAR	APPLES	PEACHES	CORN			SOYBEANS	HAY	
	HARV.	HARV.	SILKED	DOUGHING	DENTED	DROP LV.S.	2 nd CUT	3 rd CUT
2011	18	95	98	77	36	12	84	20
2010	18	85	N/A	92	68	47	73	15
5 YR AVG	14	84	N/A	81	47	22	77	13

N/A-Not Available



Temperature and Precipitation Data for the Week Ending 09-04-11

Station	Temperature				Precipitation				
	High	Low	Weekly Average	Weekly Departure	Week's Total	Week's Norm	Since April 1st 2011	Same Week Last Year	Season Normal

--NORTHWEST-----									
WHEELING	95	54	74		1.03		21.33	14.03	
PARKERSBURG	97	53	76	5	0.77	0.88	25.66	22.47	20.62
CRESTON	98	48	74		1.07		24.87	21.91	

--NORTHCENTRAL-----									
MORGANTOWN	92	54	74		2.27		32.80	20.91	
CLARKSBURG	93	52	74	4	1.24	0.90	32.44	18.17	21.56
BELINGTON	88	52	72		1.39		27.41	20.26	
WESTON	95	52	75		0.30		26.80	24.05	

--SOUTHWEST-----									
WILLIAMSON	98	59	78		2.05		25.93	27.46	
HUNTINGTON	98	55	77	5	0.70	0.71	34.70	28.23	20.34
CHARLESTON	98	54	76	6	2.55	0.87	24.63	26.02	21.19
RIPLEY	98	53	76		1.02		25.41	22.09	

--CENTRAL-----									
TERRA ALTA	87	53	70		2.10		29.98	26.30	
ELKINS	91	52	71	5	1.49	0.96	29.31	22.96	22.67
MARLINTON	88	51	68		0.48		19.08	20.68	
BECKLEY	89	51	69	4	1.80	0.77	19.00	24.06	19.61

--SOUTHERN-----									
PINEVILLE	91	58	74		1.08		23.88	26.27	
BLUEFIELD	94	51	73	5	0.97	0.73	18.38	21.65	19.30
WHITE SUL SP	94	53	73		0.75		17.58	16.54	
BLUESTONE DAM	92	52	75		1.25		16.41	12.79	

--NORTHEASTERN-----									
MARTINSBURG	90	53	71	0	0.98	0.77	26.51	10.58	18.50
KEYSER	97	52	74		0.75		25.21	12.59	
MOOREFIELD	95	56	73		1.22		24.11	12.28	

State Average Temperature	74								
State Average Precipitation	1.24								

Sources:

Weather comments and data - Dept. of Commerce, National Oceanic & Atmospheric Administration National Weather Service, Charleston, WV.

Fruit comments - Stephen S. Miller, Ph.D. Research Horticulturist.